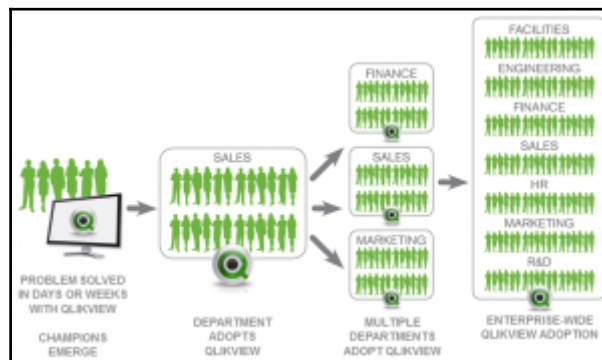
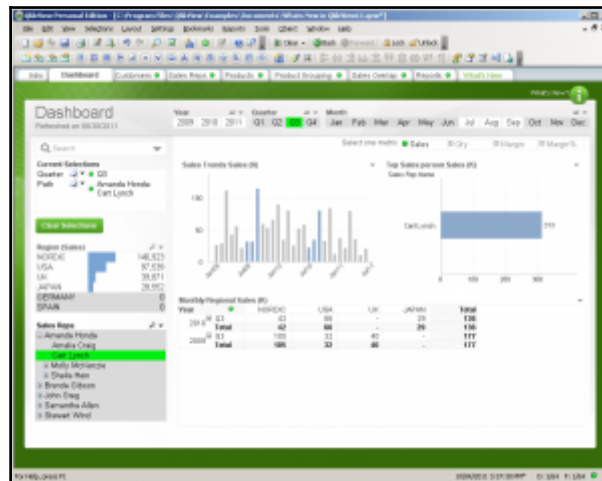
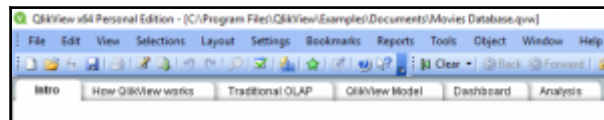
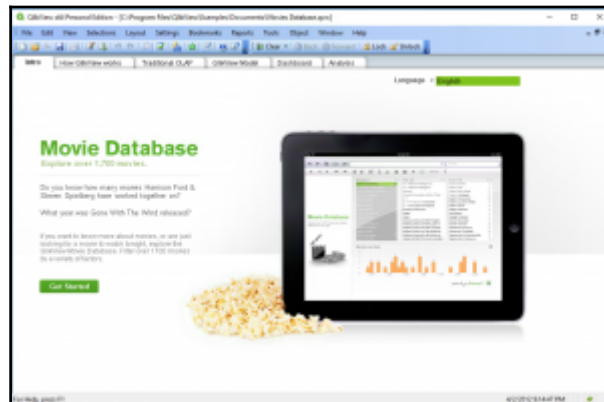
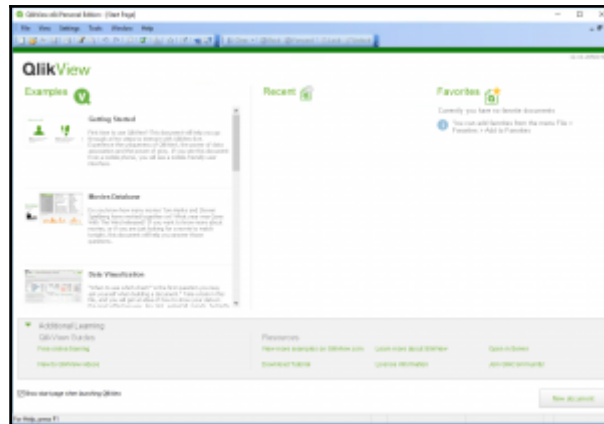
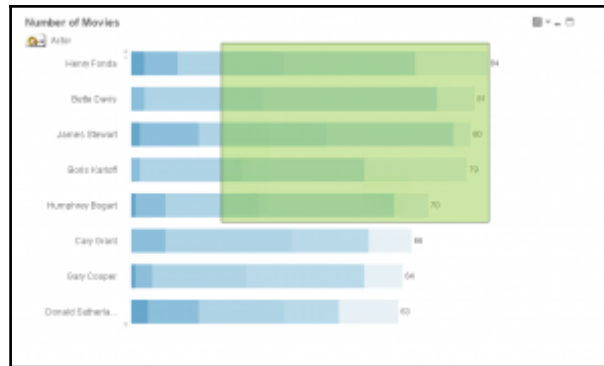


Chapter 1: Meet QlikView







Actor: 4

Bette Davis	8
Boris Karloff	7
Henry Fonda	8
James Stewart	8
A. E. Anson	1

Al Pacino

Actor: 4841

Al Pacino	2
-----------	---

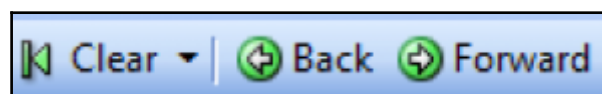
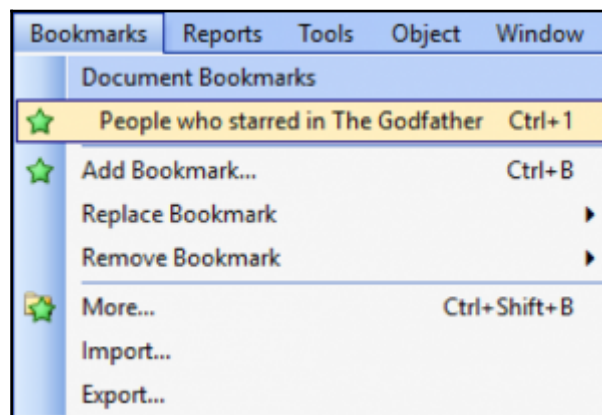
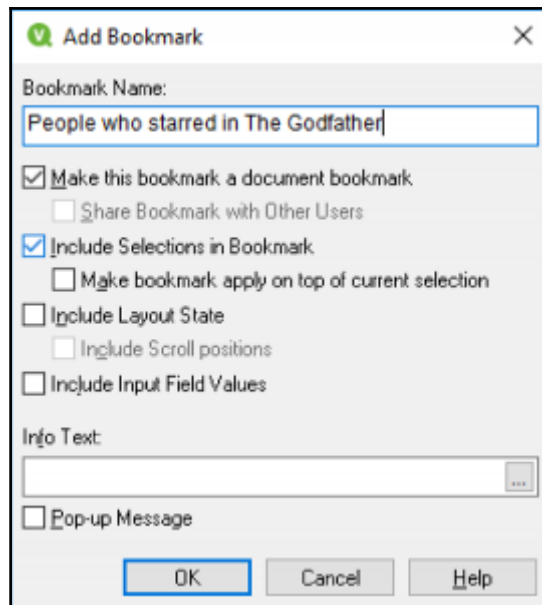
Actor: 4841

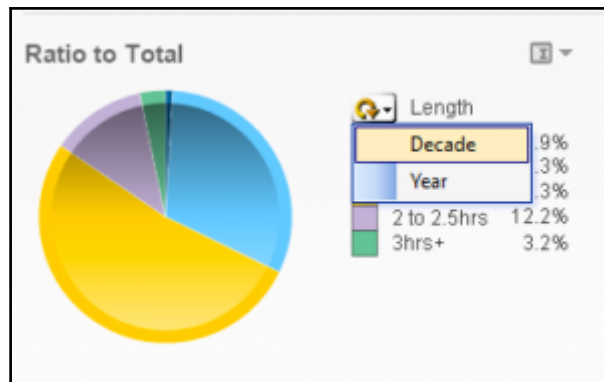
Abe Vigoda	2
Al Lettieri	1
Al Martino	2
Al Pacino	2
Alex Rocco	1

Current Filters are:

- Title
- The Godfather
- Number of Movies over time

60





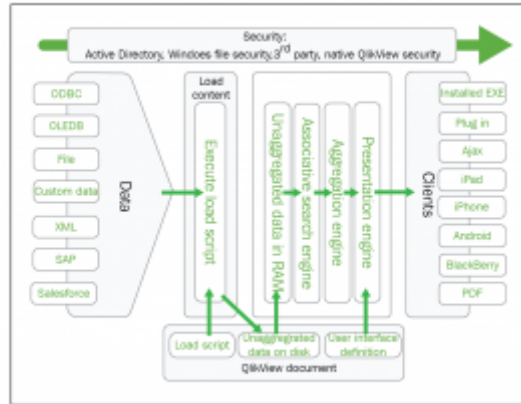
Director	Title	Actor
A. Edward Sutherland	Every Day's A Holiday	Charles Butlerworth
A. Edward Sutherland	Every Day's A Holiday	Charles Winninger
A. Edward Sutherland	Every Day's A Holiday	Edmund Lowe
A. Edward Sutherland	Every Day's A Holiday	Lloyd Nolan
A. Edward Sutherland	Every Day's A Holiday	Louis Armstrong
A. Edward Sutherland	Every Day's A Holiday	Mae West
A. Edward Sutherland	Every Day's A Holiday	Walker Catlett
A. Edward Sutherland	Follow the Boys	Andrew Siskis
A. Edward Sutherland	Follow the Boys	Dinah Shore
A. Edward Sutherland	Follow the Boys	Gale Sondergaard
A. Edward Sutherland	Follow the Boys	George Raft
A. Edward Sutherland	Follow the Boys	Jeanette MacDonald
A. Edward Sutherland	Follow the Boys	Maria Montez
A. Edward Sutherland	Follow the Boys	Marketa Dietrich
A. Edward Sutherland	Follow the Boys	Nigel Bruce
A. Edward Sutherland	Follow the Boys	Orson Welles

Title	Year	(mins)	Rating	Director
Titus's Punctured Romance	1914	73	2	Mack Sennett
The Birth of a Nation	1915	159	3	D. W. Griffith
Intolerance	1916	178	3	D. W. Griffith
Rebecca of Sunnybrook Farm	1917	71	2	Marshall Neilan
Heads of the World	1918	122	2	D. W. Griffith
Broken Blossoms	1919	95	2	D. W. Griffith
The Spiders	1919	137	2	Fritz Lang
The Last of the Mohicans	1920	75	2	Clarence Brown
Way Down East	1920	119	2	D. W. Griffith
Gads	1920	87	2	John Francis Dillon
Pollyanna	1920	80	2	Paul Powell

Title	Year	(mins)	Rating	Director
Titus's Punctured Romance	1914	73	2	Mack Sennett
The Birth of a Nation	1915	159	3	D. W. Griffith
Intolerance	1916	178	3	D. W. Griffith

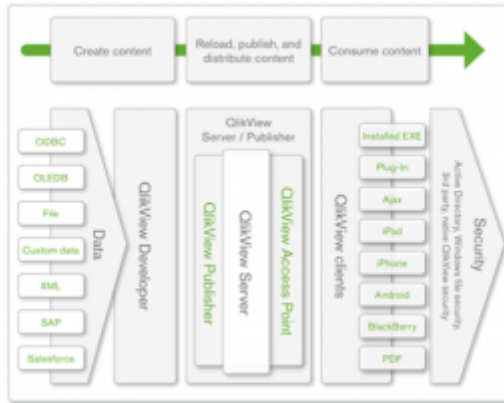
[Send to Excel](#)

QlikView: a functional overview



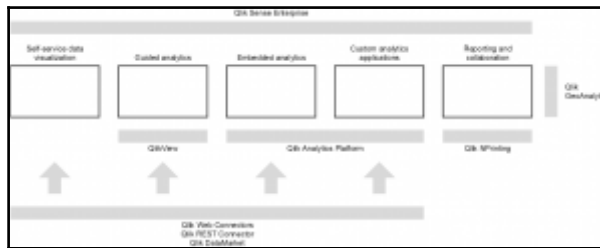
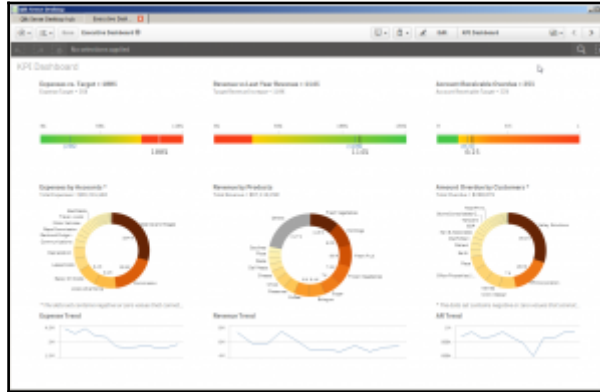
Source: QlikTech

QlikView: a component overview

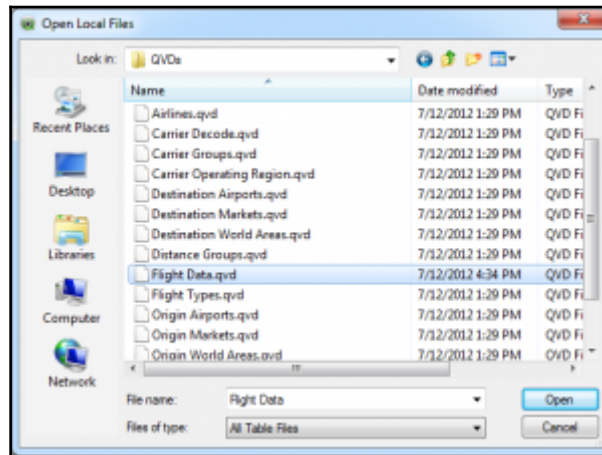
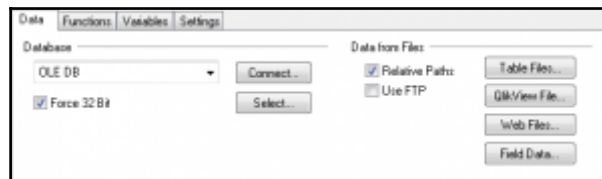
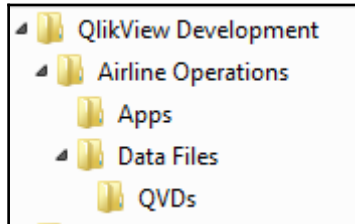


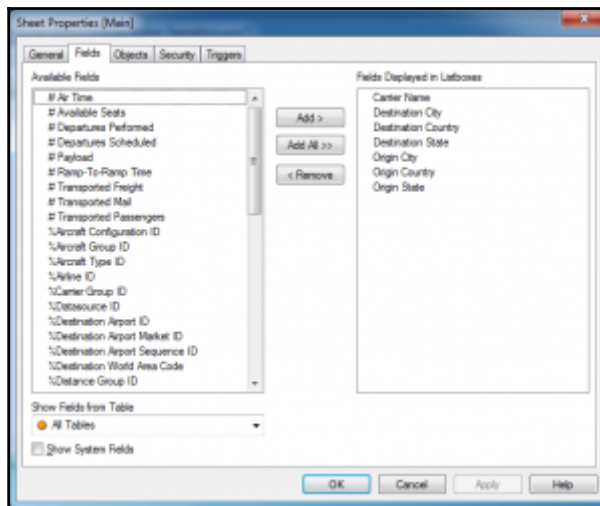
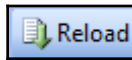
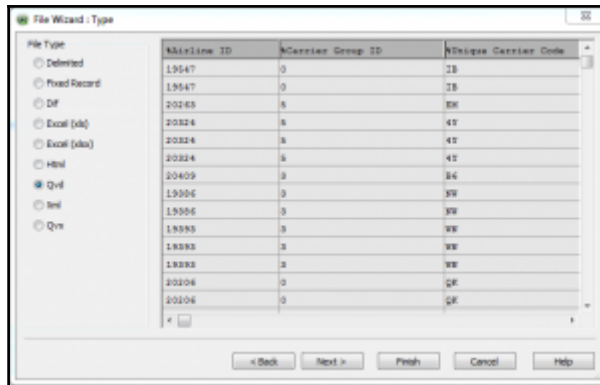
Source: QlikTech

Chapter 2: What's New in QlikView 12?



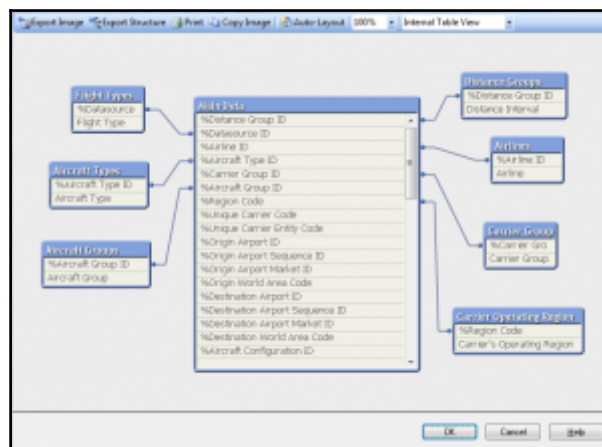
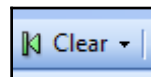
Chapter 3: Seeing is Believing





Carrier Name	Origin Country	Destination Cou
Atlas Air Inc.	Turkey	United States
Southern Air Inc.	Alghanistan	Alghanistan
World Airways Inc.	Algeria	Albania
40-Mile Air	Angola	Angola
Abaco Air, Ltd.	Anguilla	Anguilla
ABC Aerolineas SA de CV d	Antigua and Barbuda	Antigua and Barbuda
ABSA-Aerolinhas Brasileras	Argentina	Argentina
ADK Air, Inc.	Aruba	Aruba
ACH AIR CHARTER GmbH	Australia	Australia
Aeropolis Aviation Ltd.	Austria	Austria
Aer Lingus FC	Azerbaijan	Azerbaijan
Aerodynamics Inc.	Bahrain	Bahrain
AeroViaces Nacionales, S	Barbados	Barbados
Aeroflot Russian Airlines	Belgium	Belarus
	Belize	Belgium

Origin State	Destination Sta	Origin City	Destination Cit
Alabama	Delaware	Adana, Turkey	Baltimore, MD
Alaska	Florida	47-Mile Mine, AK	Charleston, SC
Alberta	Maryland	A Coruna, Spain	Columbia, SC
Arizona	New Jersey	Aalborg, Denmark	Dover, DE
Arkansas	New York	Aarhus, Denmark	Fort Dix, NJ
British Columbia	Ohio	Abbotsford, Canada	Miami, FL
California	South Carolina	Aberdeen, ID	New York, NY
Colorado	Alabama	Aberdeen, SD	Wilmington, OH
Connecticut	Alaska	Aberdeen, SD	47-Mile Mine, AK
Delaware	Alberta	Abu Dhabi, United Arab Em	A Coruna, Spain
District of Columbia	Arizona	Abuja, Nigeria	Aalborg, Denmark
Florida	Arkansas	Acapulco, Mexico	Aarhus, Denmark
Georgia	British Columbia	Accra, Ghana	Abbotsford, Canada
Hawaii	California	Adak Island, AK	Aberdeen, ID
		Addis Ababa, Ethiopia	Aberdeen, MD



Home Dashboard

Year	Quarter	Months
2009	Q1	Jan
2010	Q2	Feb
2011	Q3	Mar
	Q4	Apr
		May
		Jun
		Jul
		Aug
		Sep
		Oct
		Nov
		Dec

Carrier's Operating Region:

- AMERIC
- EUROPE
- ASIA-PACIFIC
- TRANSNATIONAL
- SYSTEM

Carrier Group:

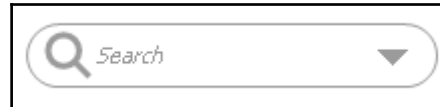
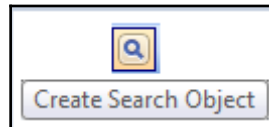
- Domestic Carrier (ie. Transportation-related)
- Foreign Carrier
- Large Regional Carrier (Carriers with annual revenue)
- Major Carrier (Carriers with annual revenue over \$1 billion)
- Medium Regional Carrier (Carriers with annual revenue between \$500 million and \$1 billion)
- National Carrier (Carriers with annual revenue of \$100 million to \$500 million)
- Small-Carriered Carrier (Carrier holding certificate)

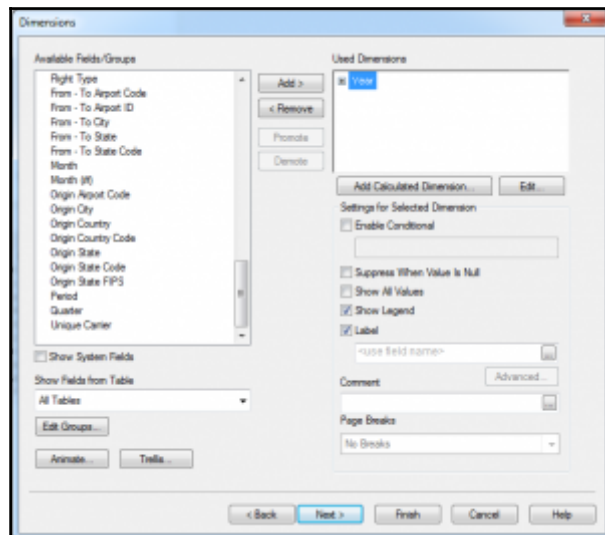
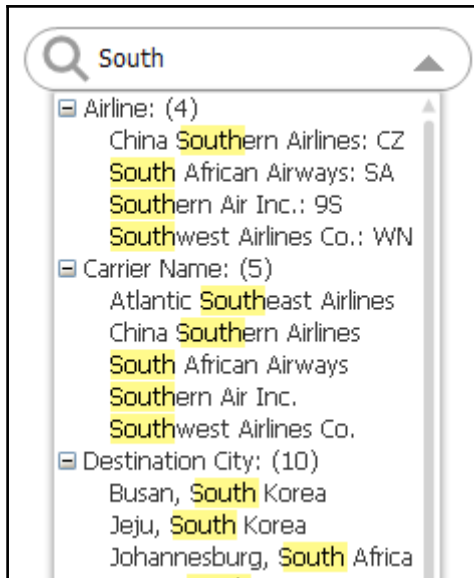
Flight Type:

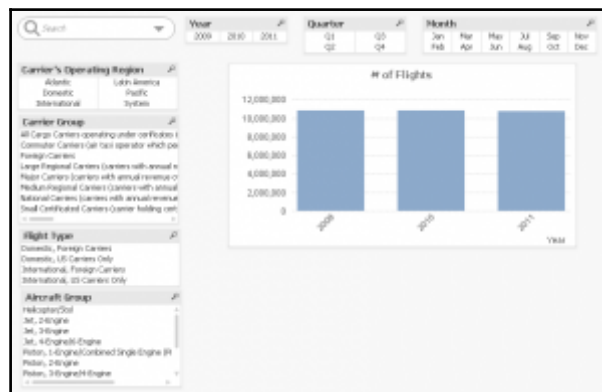
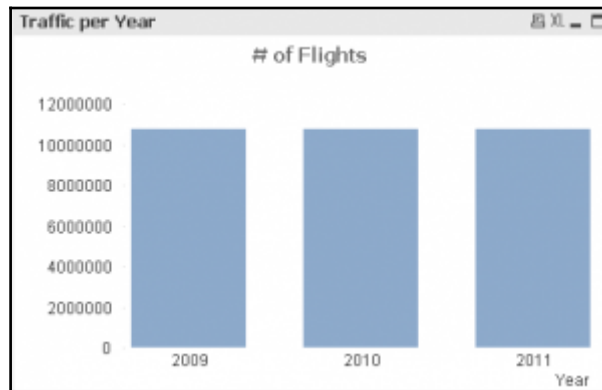
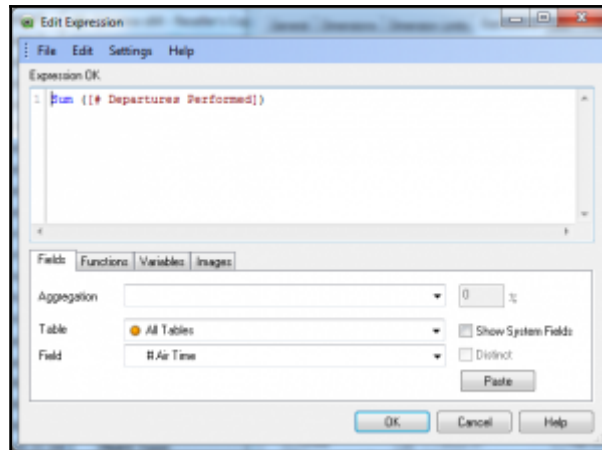
- Domestic, Foreign Carrier
- Domestic, US Carrier Only
- International, Foreign Carrier
- International, US Carrier Only

Aircraft Group:

- Jet
- Jet, 2-Engine
- Jet, 3-Engine
- Jet, 4-Engine
- Prop, 2-Engine/Combined Turbo-Prop (2-Eng)
- Prop, 3-Engine
- Prop, 4-Engine
- Turbo-Prop, 2-Engine
- Turbo-Prop, 4-Engine









Group Settings

Group Name: Time

Drill-down Group
 Cyclic Group

Available Fields:

- # Air Time
- # Available Seats
- # Departures Performed
- # Departures Scheduled
- # Payload
- # Ramp-To-Ramp Time
- # Transported Freight
- # Transported Mail
- # Transported Passengers
- % Aircraft Configuration ID
- % Aircraft Group ID
- % Aircraft Type ID
- % Airline ID
- % Carrier Group ID
- % Station ID

Used Fields:

- Year
- Month

Show Fields from Table: All Tables

Label: <input type="text" value="<use field name>"/>

Buttons: Add, Add All, Remove, Promote, Demote, Add Expression, Edit, OK, Cancel, Help





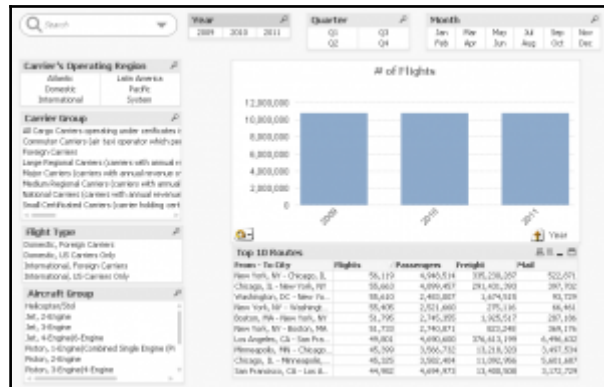
Total Mode

No Totals

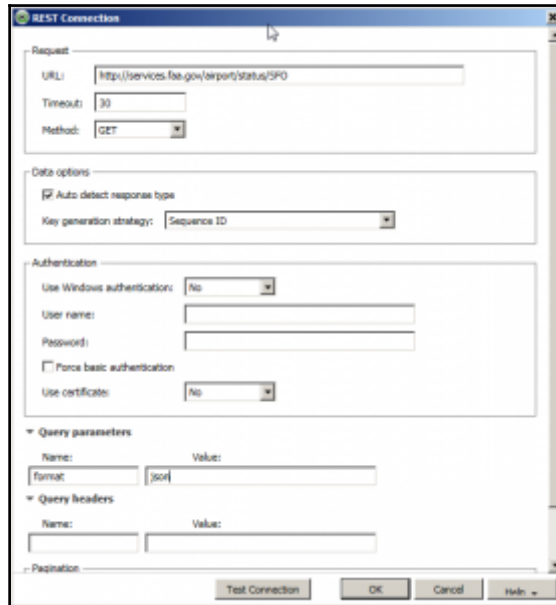
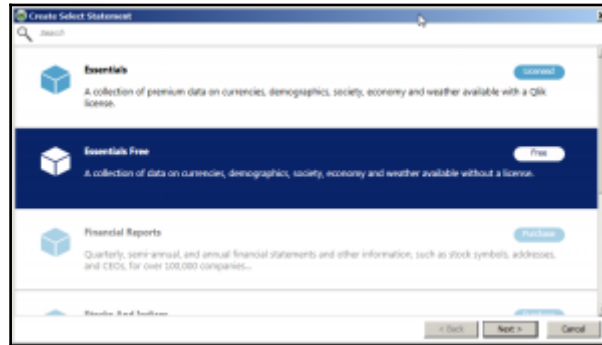
Expression Total

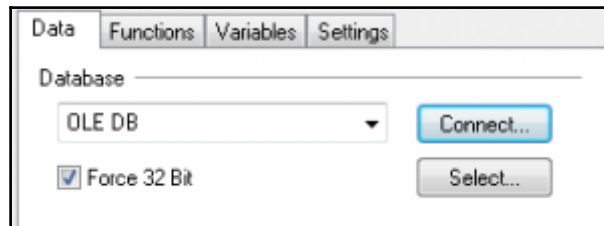
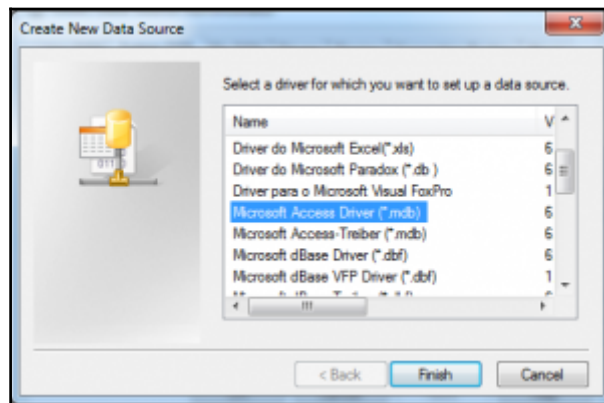
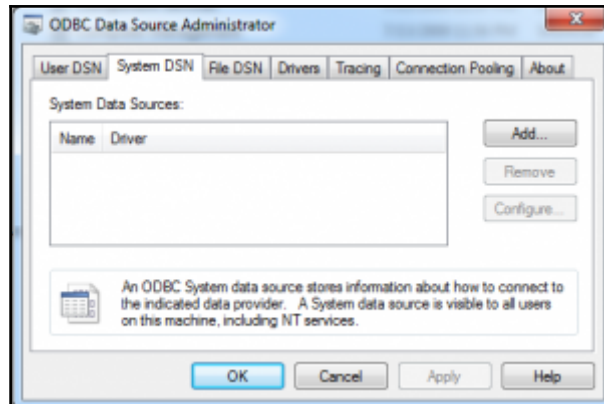
Sum

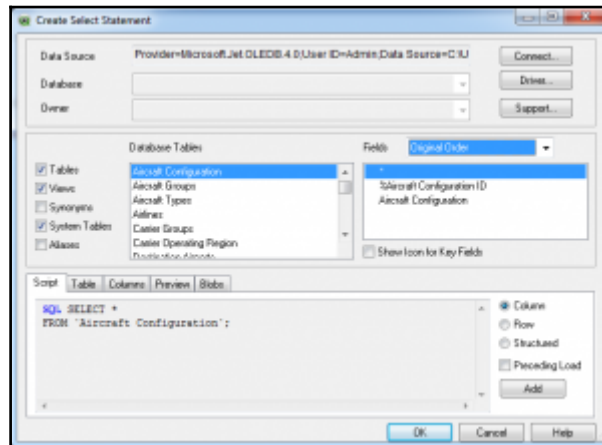
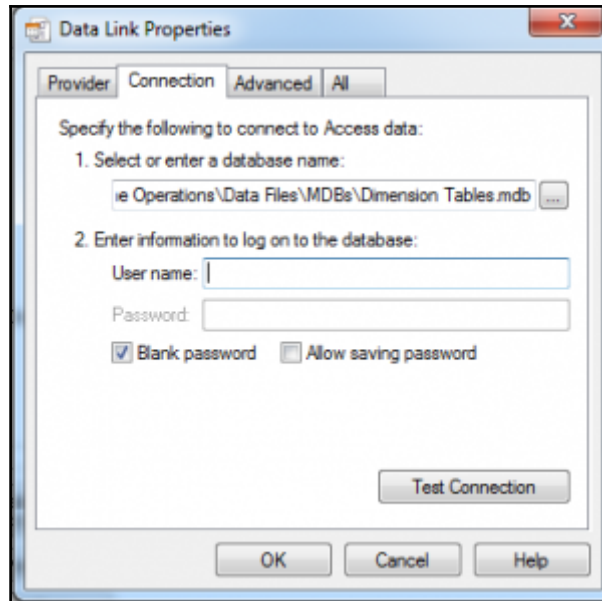
of Rows

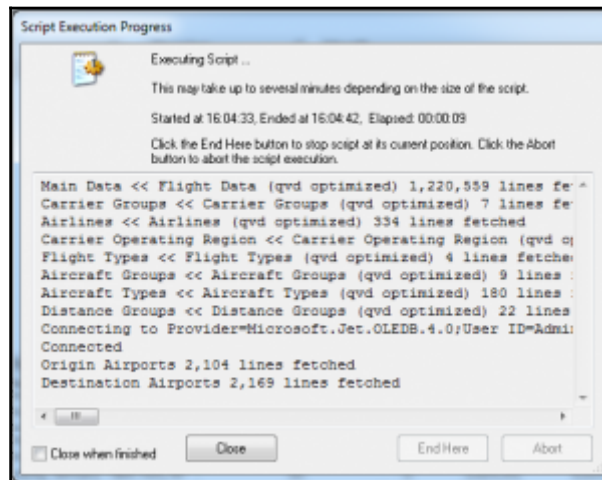
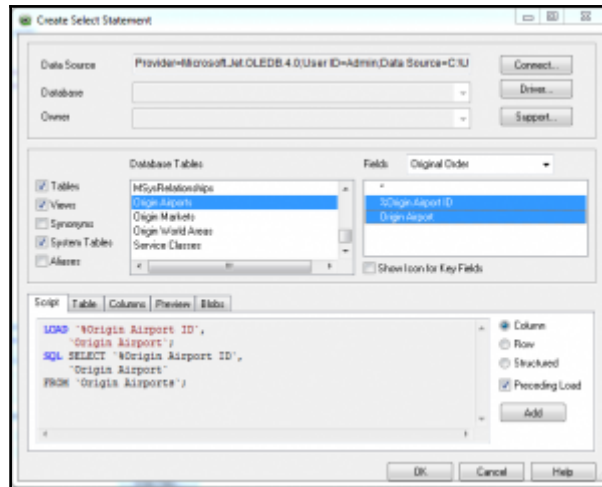


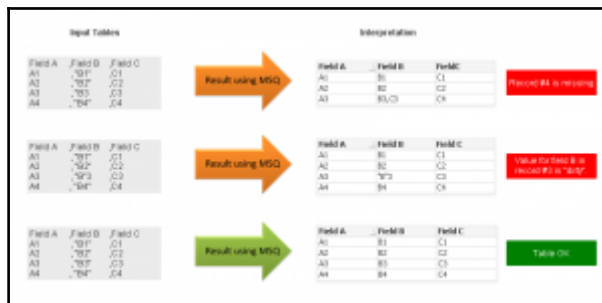
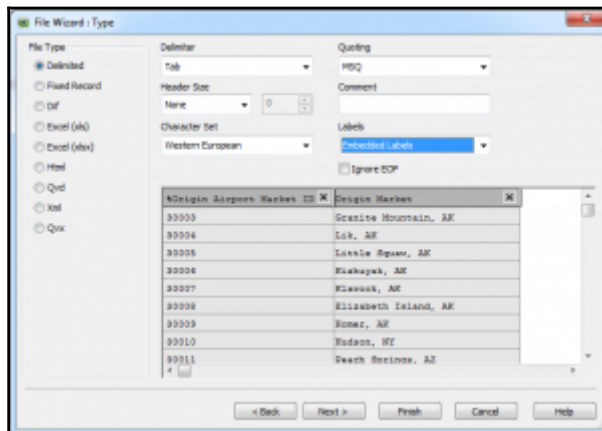
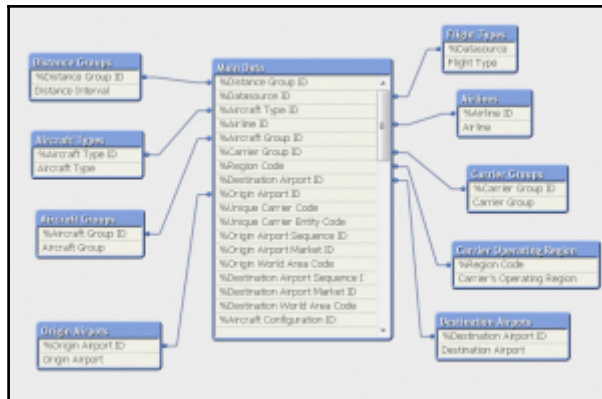
Chapter 4: Data Sources

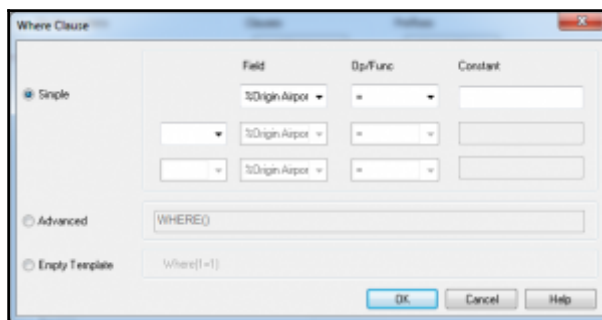
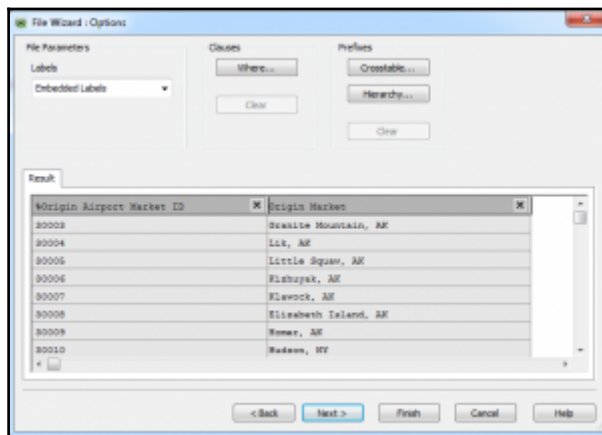
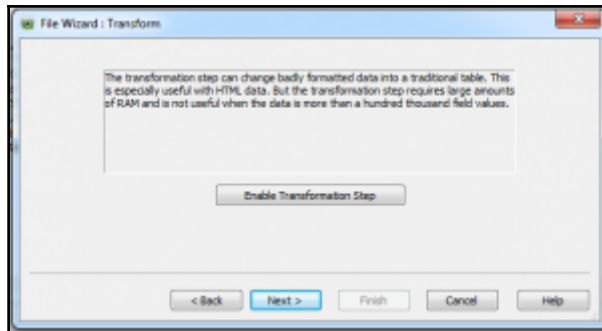


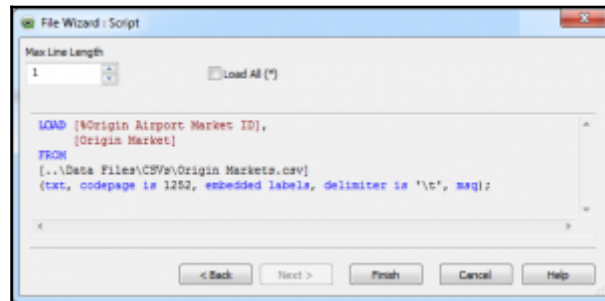
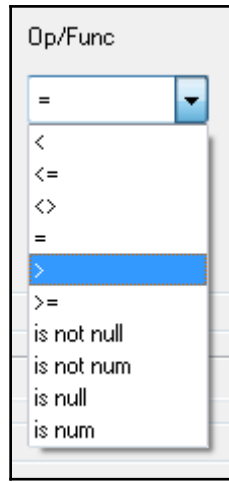


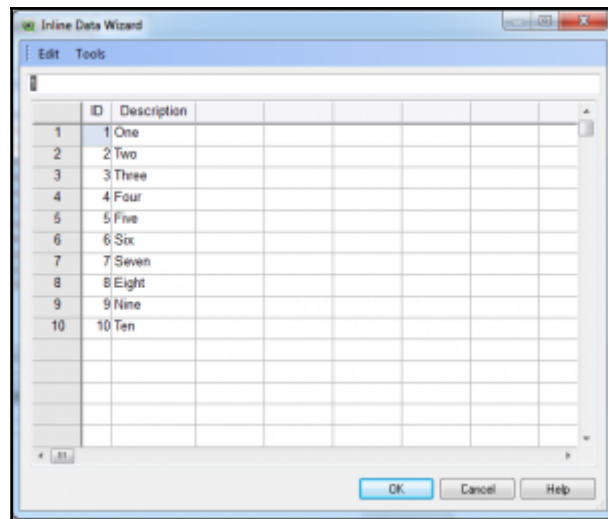






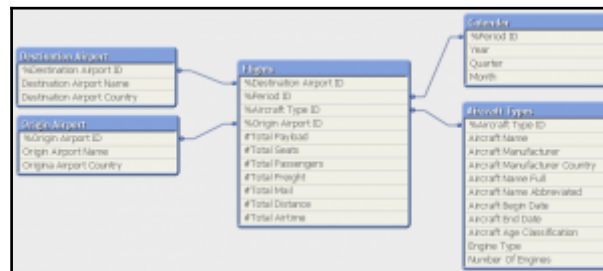
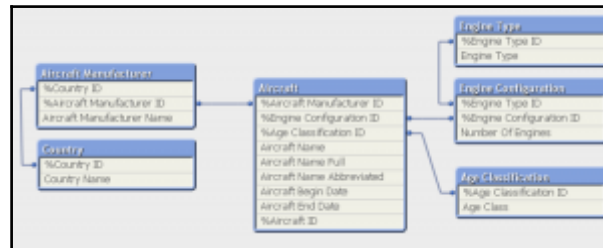


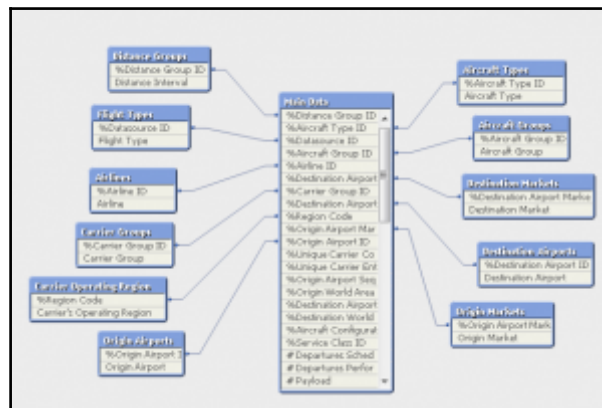
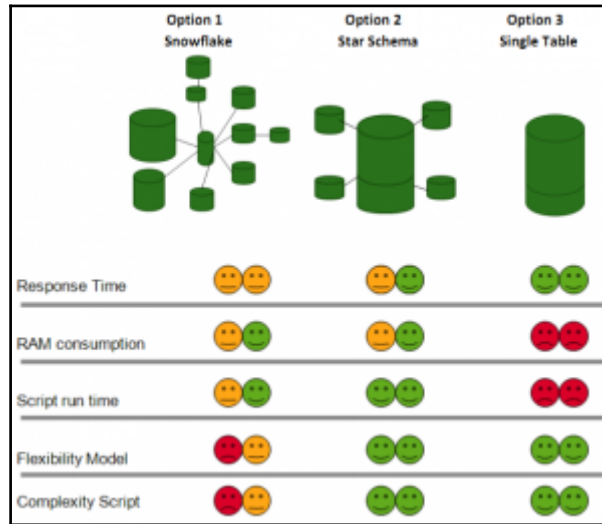
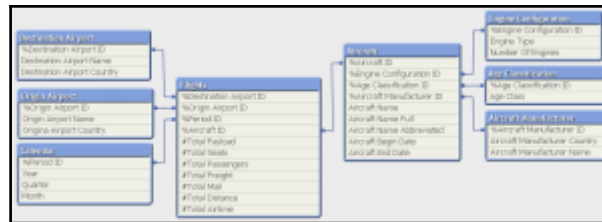




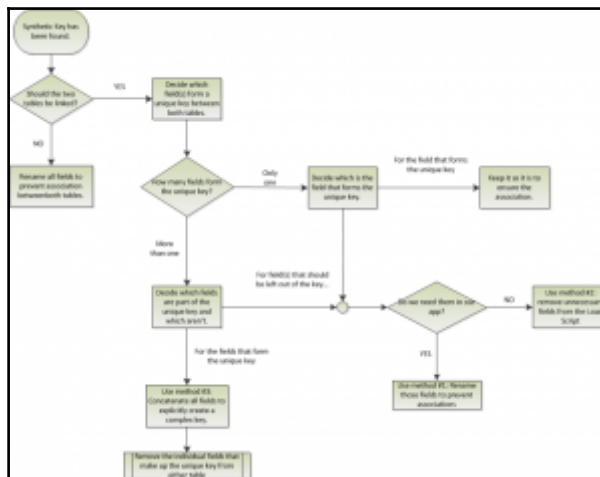
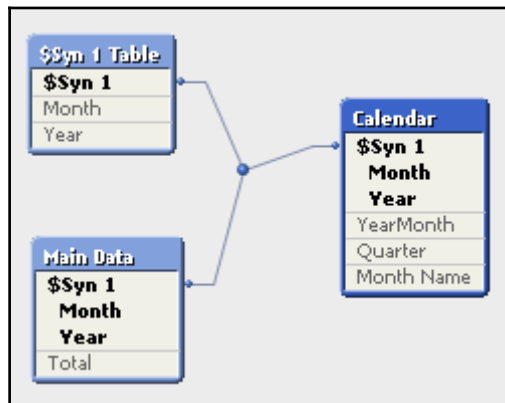
Chapter 5: Data Modeling

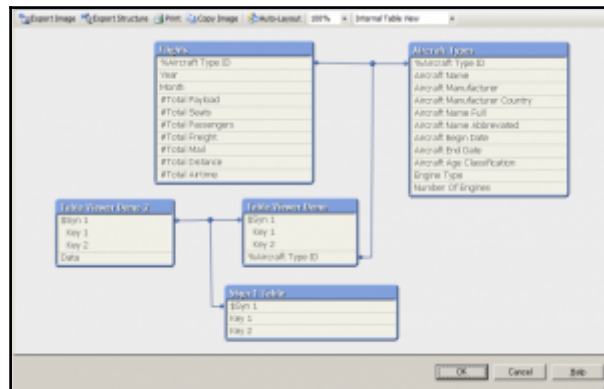
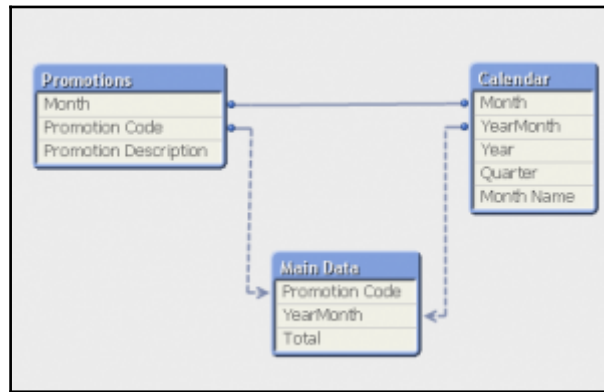
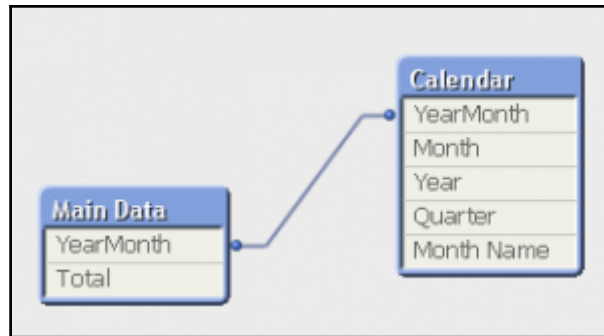
Aircraft Types
%Aircraft Type ID
Aircraft Name
Aircraft Manufacturer
Aircraft Manufacturer Country
Aircraft Name Full
Aircraft Name Abbreviated
Aircraft Begin Date
Aircraft End Date
Aircraft Age Classification
Engine Type
Number Of Engines





Origin Airport	Destination Airport	Distance Interval
Belaga, Malaysia: Belaga Airport	San Juan, PR: Luis Muñoz Marín International	10500-10999 Miles
Joiville, Brazil: Joiville Airport	Guam, TI: Andersen AFB	10500-10999 Miles
Miami, FL: Miami International	Shaw River, Australia: Shaw River Airport	10500-10999 Miles
Sapong, TI: Francisco C. Adá Sapong International	Joiville, Brazil: Joiville Airport	10500-10999 Miles
Bengkulu, Indonesia: Patneuwai Soekarno	San Antonio, TX: San Antonio International	10000-10499 Miles
Diego Garcia, British Indian Ocean Territory: Di	Mena, AR: Mena Intermountain Municipal	10000-10499 Miles
Mahe Islands, Seychelles: Seychelles Internatio	Phoenix, AZ: Phoenix Sky Harbor International	10000-10499 Miles
Miami, FL: Opa-locka Executive	Sungei Tekai, Malaysia: Sungei Tekai Airport	10000-10499 Miles
New York, NY: John F. Kennedy International	Anabury, Australia: Anabury Station	10000-10499 Miles
Phoenix, AZ: Phoenix Sky Harbor International	Mahe Islands, Seychelles: Seychelles Internatio	10000-10499 Miles
Sungei Tekai, Malaysia: Sungei Tekai Airport	Miami, FL: Opa-locka Executive	10000-10499 Miles
Teterboro, NJ: Teterboro Airport	Lafrobe, Australia: Lafrobe Valley	10000-10499 Miles
Atlanta, GA: Hartsfield Jackson Atlanta Internati	Hat Yai, Thailand: Hat Yai International	9500-9999 Miles
Augustus Downs, Australia: Augustus Downs Air	New York, NY: John F. Kennedy International	9500-9999 Miles
Carroll, IA: Arthur N Meo	Adelaide, Australia: Adelaide International	9500-9999 Miles
Columbo, Sri Lanka: Bandaranaike International	Houston, TX: George Bush Intercontinental/Hou	9500-9999 Miles
Columbus, IN: Columbus Municipal	Singapore, Singapore: Singapore Chang Intern...	9500-9999 Miles





Aircraft Types

Rows: 378

Fields: 11

Keys: 1

Dimension containing information on aircrafts, including engine types and configuration and manufacturer

%Aircraft Type ID [Key]

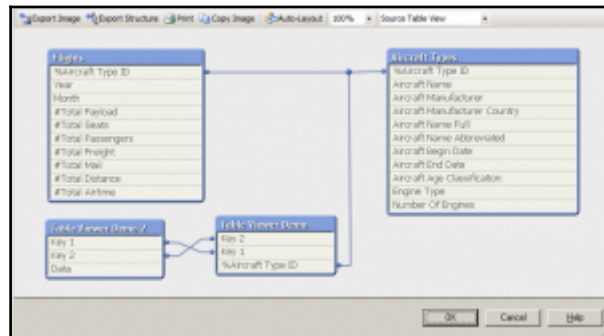
Information density: 100%

Subset ratio: 42%

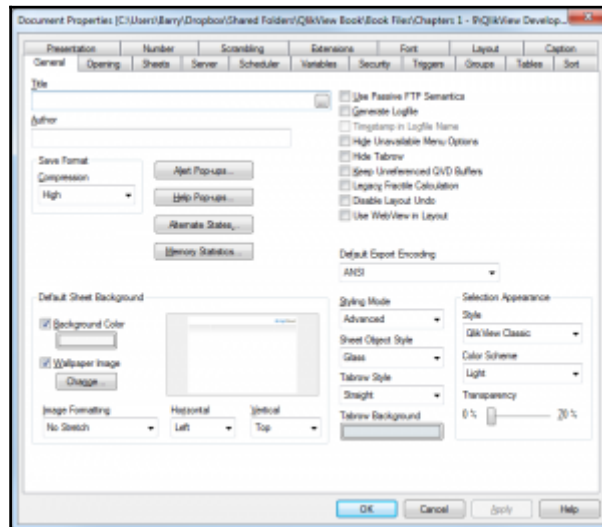
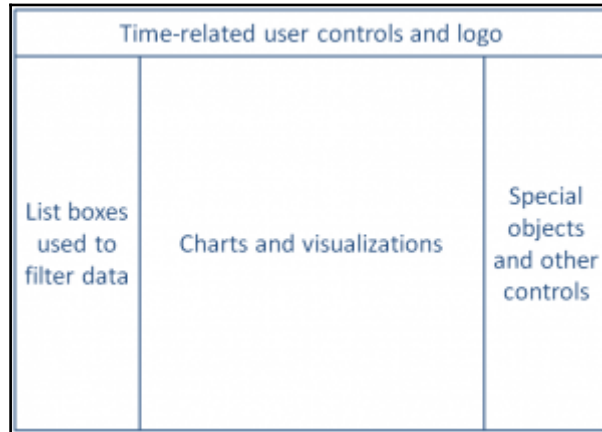
Tags: \$key, \$numeric, \$integer

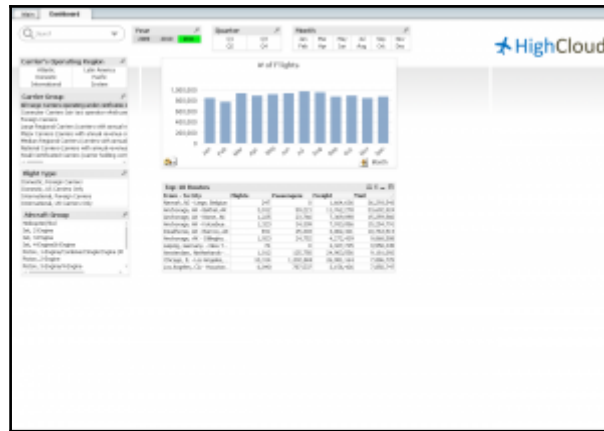
Primary key of the Aircraft Type dimension

%Aircraft Type ID	Aircraft Name	Aircraft Manufa...	Aircraft Manufa...	Aircraft Name Full	Aircraft Name A...	Aircraft Begin D...
417	BOEING 737-400	BOEING	United States	BOEING 737-400	8737-4	1-0-1996
418	BOEING 737-300	BOEING	United States	BOEING 737-300	8737-3	1-0-1996
498	A320	AIRBUS INDUSTRIES	France	AIRBUS INDUSTRIES A320		1-0-1997
631	CANADAR R3-700	CANADAR	Canada	CANADAR R3-700	R3-700	1-0-1996



Chapter 6: Styling Up





The "Sheet Properties (Dashboard)" dialog box is shown with the "General" tab selected. The title is "Dashboard" and the sheet ID is "SH12". The "Show Sheet" option is set to "Always". The "Zoom (Percent)" is set to 100. The "Background" section has "Document Default" selected. The "Image Formatting" section has "No Stretch" selected for horizontal and "Left" for vertical. The "Tab Settings" section has "Sheet Background" selected, with "Tab Color" and "Tab Text Color" set to black. Buttons for "Theme Maker...", "Apply Theme...", and "Apply to All" are visible.

Sheet Properties (Dashboard)

General Fields Objects Security Triggers

ObjectID	Type	Caption	ShowMode	CalcTime	Layer	Memory
CH01	Bar Chart	Traffic per Year	Normal	0	0	3 KB
CH02	Straight Table	Top 10 Routes	Normal	0	0	3062 KB
LB26	List Box	Aircraft Group	Normal	0	0	0 KB
LB27	List Box	Right Type	Normal	0	0	0 KB
LB28	List Box	Center's Operating Region	Normal	0	0	0 KB
LB29	List Box	Center Group	Normal	0	0	0 KB
LB30	List Box	Month	Normal	0	0	0 KB
LB31	List Box	Quarter	Normal	0	0	0 KB
LB32	List Box	Year	Normal	0	0	0 KB
SO01	Search Object		Normal	0	0	0 KB

Accept Cancel Apply Abort

Inactive Caption

Background Color Text Color

Active Caption

Background Text Color

Multiline Caption

Copy

- Paste All
- Paste Base Color
- Paste Second Color
- Paste Gradients

Inactive Caption

Background Color Text Color

Active Caption

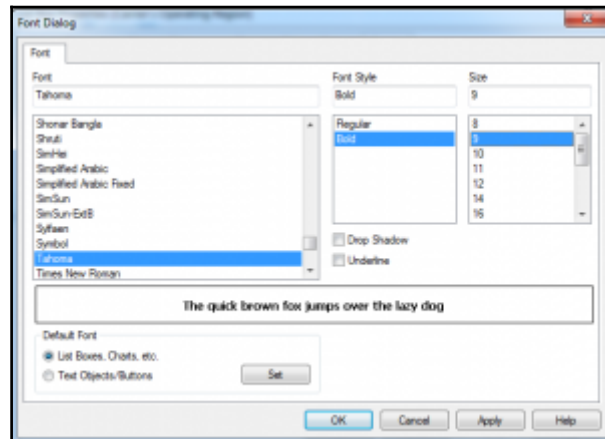
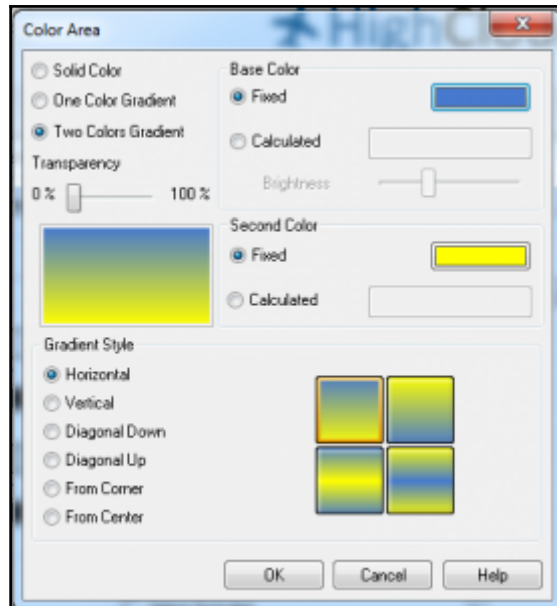
Background Color Text Color

Multiline Caption

Copy

- Paste All
- Paste Base Color
- Paste Second Color
- Paste Gradients

Normal



Caption and Border Properties

Apply properties to...

Objects on this sheet
 Objects in this document
 Only this object type
 All object types

Set as default for new objects in this document

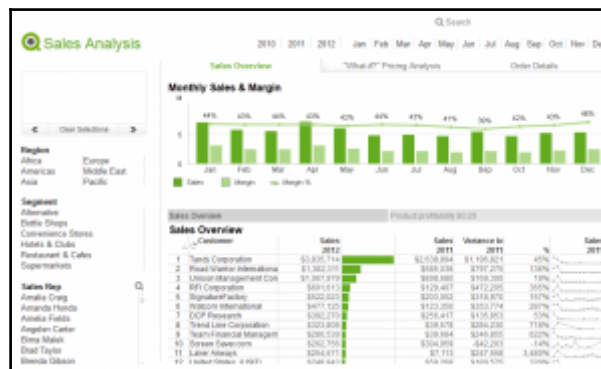
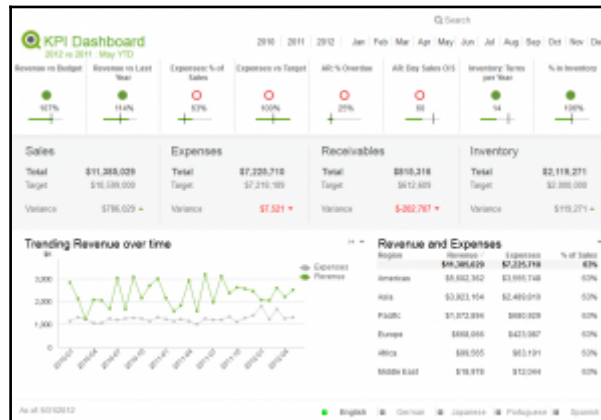
OK Cancel

Simplified - Air Domestic, Foreign Carriers Domestic, US Carriers Only International, Foreign Carriers International, US Carriers Only	Simplified - Glass Domestic, Foreign Carriers Domestic, US Carriers Only International, Foreign Carriers International, US Carriers Only	Simplified - Transparent Domestic, Foreign Carriers Domestic, US Carriers Only International, Foreign Carriers International, US Carriers Only
Simplified - Line Domestic, Foreign Carriers Domestic, US Carriers Only International, Foreign Carriers International, US Carriers Only	Advanced - Glass Domestic, Foreign Carriers Domestic, US Carriers Only International, Foreign Carriers International, US Carriers Only	Advanced - Plain Domestic, Foreign Carriers Domestic, US Carriers Only International, Foreign Carriers International, US Carriers Only



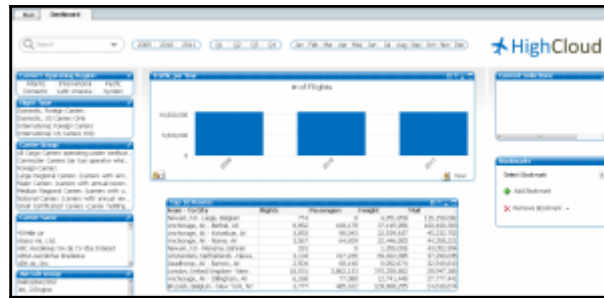
Carrier Name (# Departures)	
	367
ABSA-Aerolinhas Brasileiras	2,261
ABX Air, Inc.	1,404
ACM AIR CHARTER GmbH	116
Acropolis Aviation Ltd.	24
Aer Lingus Plc	9,821
Aeroflot Russian Airlines	2,744
Aerolineas Argentinas	1,691
Aerolineas Galapagos S A Aerogal	1
AeroLogic GmbH	927
Aeromexico	1
Aeroservices Executive	3
Aerosur	1,159
Aerosvit Ukrainian Airlines	1,346
Aerovias Nac'l De Colombia	949
Air-India	2,652
Air Alsea A/S	45

Chapter 7: Building Dashboards



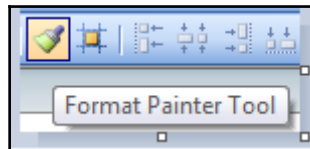
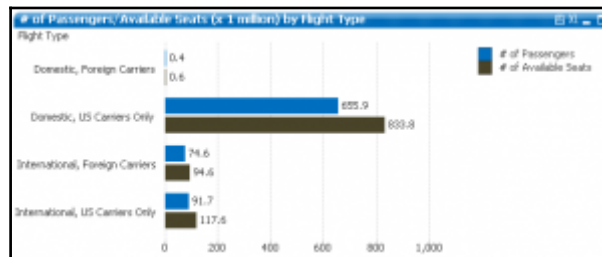
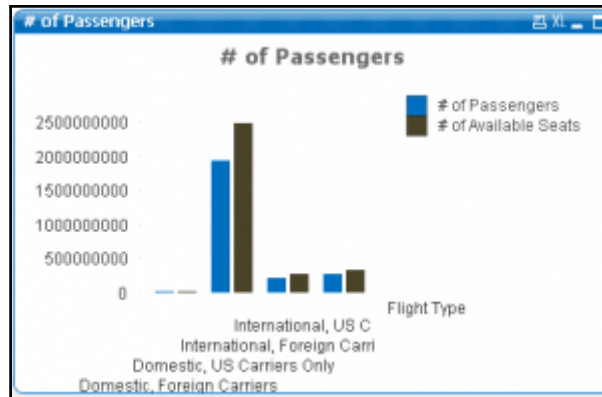
Number of Orders: 14,369

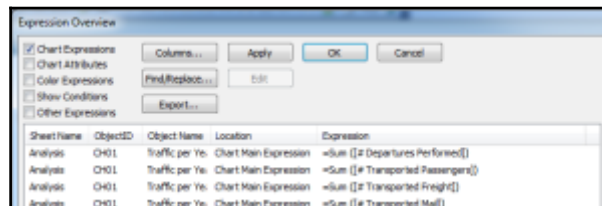
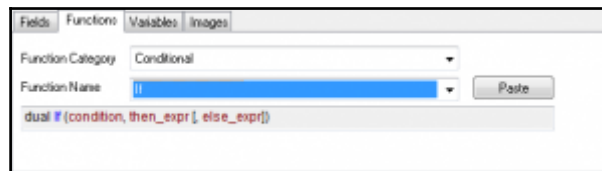
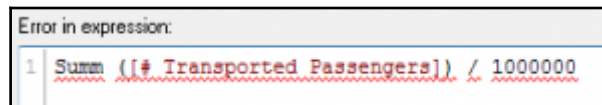
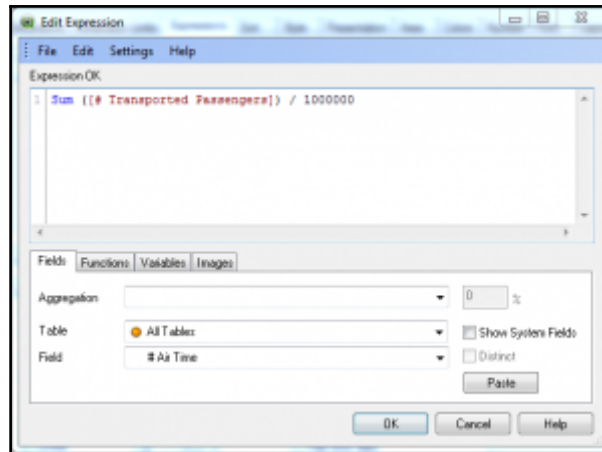
Order #	Order Date	Customer	Invoice #	Products	Sales Price	Sales / Qty	Revenue	Margin
112883	2010-08-23	Homeboard	315436	Great Cranben	\$0.00	27,500	\$0.00	-\$3,905.00
122888	2010-10-25	Homeboard	329958	Great Cranben	\$0.00	27,500	\$0.00	-\$3,905.00
113727	2010-09-10	Icon	319925	Blue Label Car	\$0.00	12,500	\$0.00	\$0.00
124664	2010-11-12	Icon	330499	Blue Label Car	\$0.00	12,500	\$0.00	\$0.00
213740	2011-08-31	Salamander Junk	117167	Blue Label Car	\$0.00	7,500	\$0.00	\$0.00
211823	2011-09-14	Healthcon	116226	Landslide Hot	\$2.28	7,126	\$16,247.28	\$6,424.80
203053	2011-03-25	Healthcon	103099	Landslide Hot	\$2.28	6,480	\$14,774.40	\$1,962.88
113711	2010-09-11	Scientific Atlanta	317070	Blue Label Car	\$0.00	6,250	\$0.00	\$0.00
113712	2010-09-11	Scientific Atlanta	317105	Blue Label Car	\$0.00	6,250	\$0.00	\$0.00
214783	2011-09-09	Healthcon	116060	Landslide Hot	\$2.28	5,834	\$13,301.52	\$5,259.93
214796	2011-09-20	Healthcon	116050	Landslide Hot	\$2.28	6,834	\$15,301.52	\$5,259.93



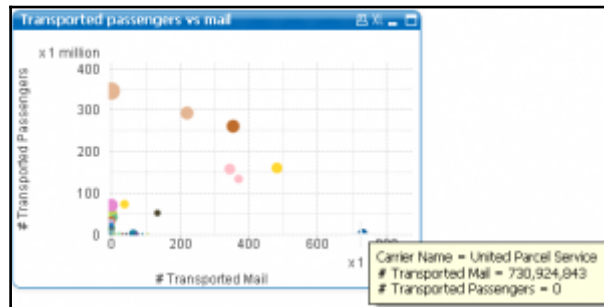
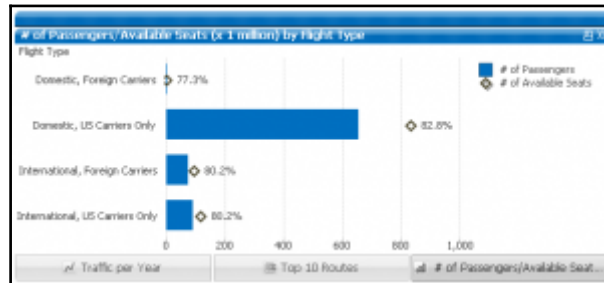
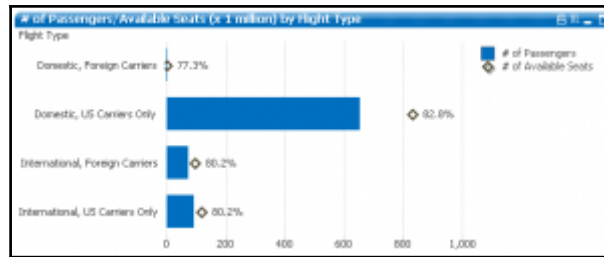
The screenshot shows a "General" settings dialog box for a chart. The dialog has several sections:

- Window Title:** A text input field.
- Object ID:** A text input field.
- Show Title in Chart:** A checked checkbox.
- Calculation Condition:** A text input field.
- Chart Type:** A grid of 12 icons representing different chart types.
- Fast Type Change:** A list box containing "Bar Chart", "Line Chart", "Combo Chart", "Scatter Chart", "Pie Chart", "Pivot Table", and "Straight Table".
- Preferred Icon Position:** Radio buttons for "In Chart" and "In Caption", with "In Caption" selected.
- Buttons:** "Reset User String", "Reset User Docking", "Error Messages...", "Reference Mode: Default", "Title Settings...", "Font Settings...", "Back", "Next", "Fresh", "Cancel", and "Help".









Actions

Clear All
 Activate Sheet
 Select in Field

Add Delete
 Promote Demote

Current Selections

Year 2011

Back Clear Selections Forward

Distance

Sum	389,816,883
Average	909
Min	0
Max	10,733

HighCloud

Search

Chart: # of Flights

Chart: Distance

Summary: 2011

Summary: 2012

Summary: 2013

Summary: 2014

Summary: 2015

Summary: 2016

Summary: 2017

Summary: 2018

Summary: 2019

Summary: 2020

Summary: 2021

Summary: 2022

Summary: 2023

Summary: 2024

Summary: 2025

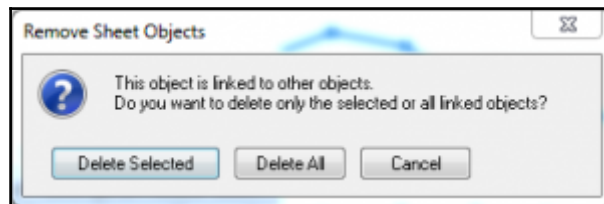
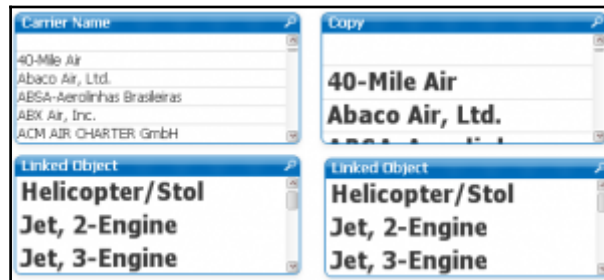
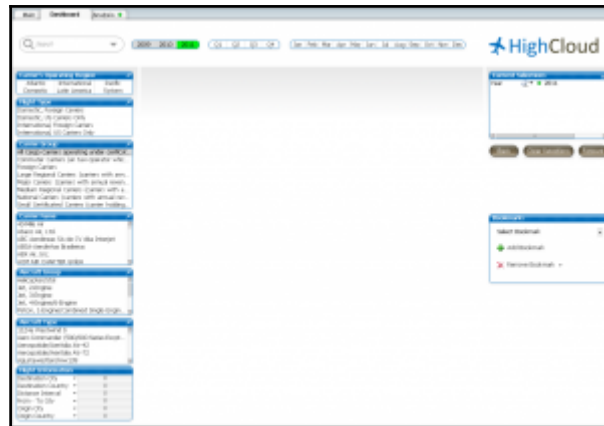
Summary: 2026

Summary: 2027

Summary: 2028

Summary: 2029

Summary: 2030



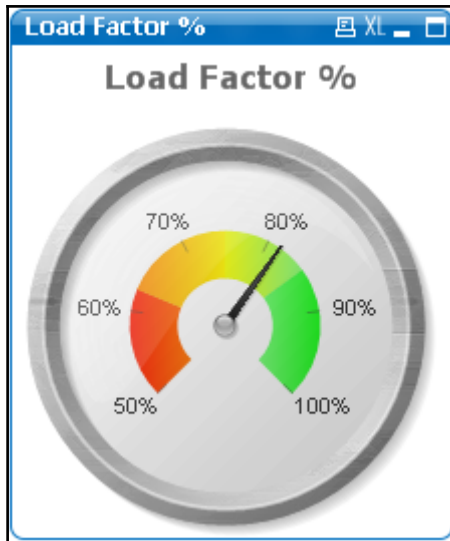


Chart Text


Text

Font...

On Top

Background

Transparent

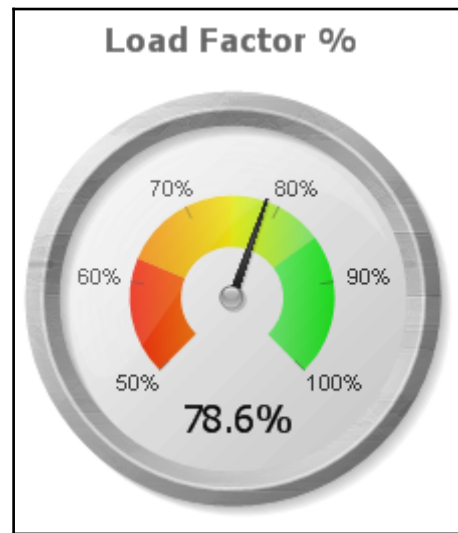
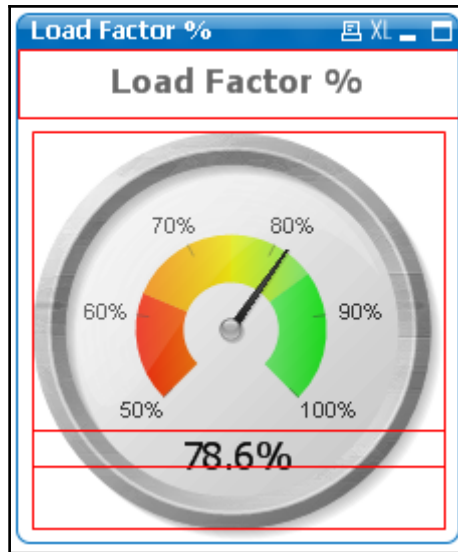
Fixed 

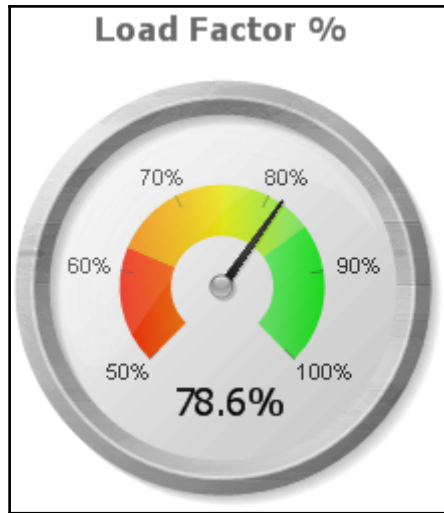
Calculated

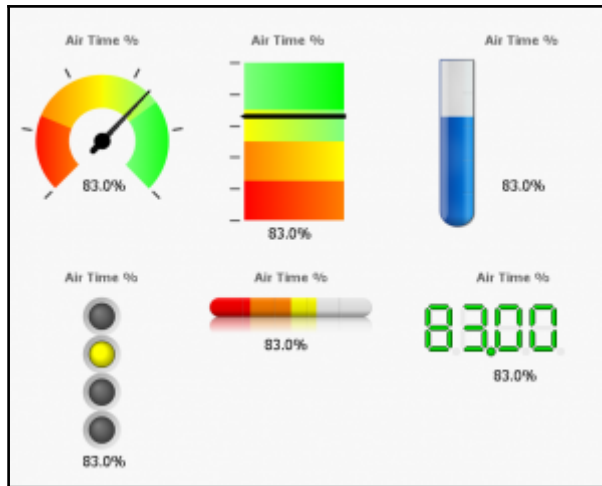
Angle (degrees)

Alignment

OK Cancel Help

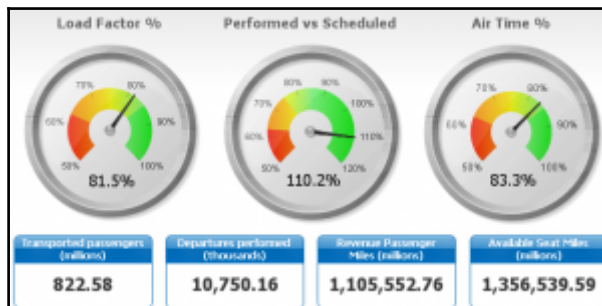






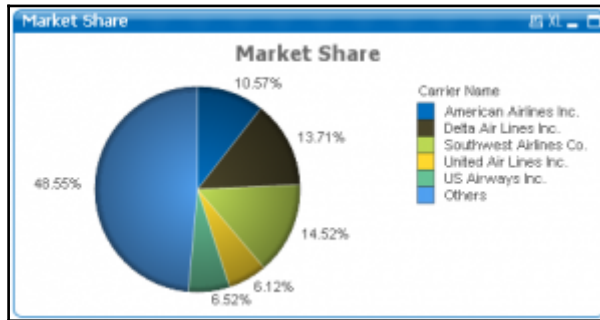
Transported passengers
(millions)

2,415.36



Transported passengers
(millions)

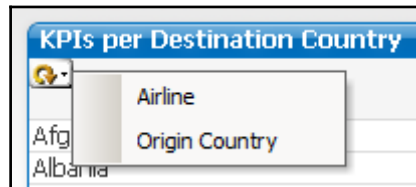
⚠ 2,415.36



Expression Overview

Chart Expressions Columns... Apply OK Cancel
 Chart Attributes
 Color Expressions Find/Replace... Edit
 Show Conditions
 Other Expressions Export...

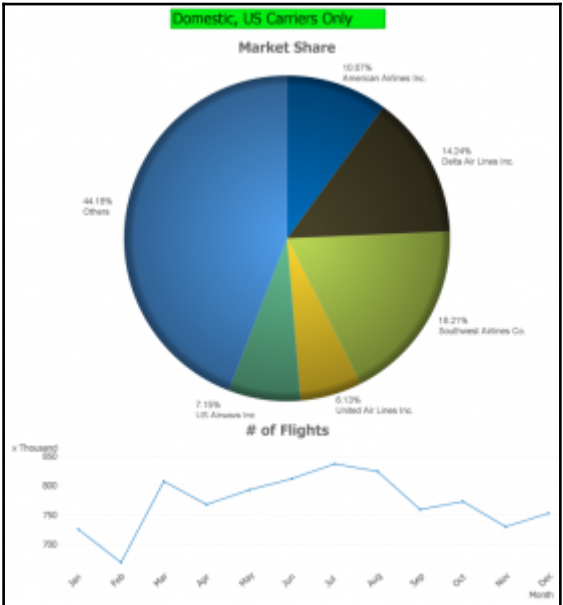
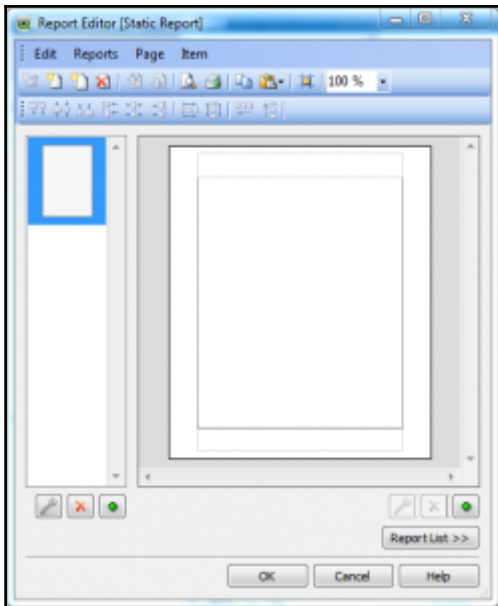
Sheet Name	ObjectID	Object Name	Location	Expression
Analysis	OH4	# Transported	Chart Main Expression	=Sum ([# Transported Mail])
Analysis	OH4	# Transported	Chart Main Expression	=Sum ([# Transported Passengers])
Analysis	OH4	# Transported	Chart Main Expression	=Sum ([# Departures Performed])
Dashboard	OH5	Load Factor %	Chart Text	=Nur ([LoadFactor], " #.# %")
Dashboard	OH5	Load Factor %	Chart Main Expression	= [LoadFactor]
Dashboard	OH6	Performed vs	Chart Text	=Nur ([Performed/Scheduled], " #.# %")
Dashboard	OH6	Performed vs	Chart Main Expression	= [Performed/Scheduled]
Dashboard	OH7	Air Time %	Chart Text	=Nur (Sum ([# Air Time]) / Sum ([# Ramp-To-Ramp
Dashboard	OH7	Air Time %	Chart Main Expression	=Sum ([# Air Time]) / Sum ([# Ramp-To-Ramp Time]

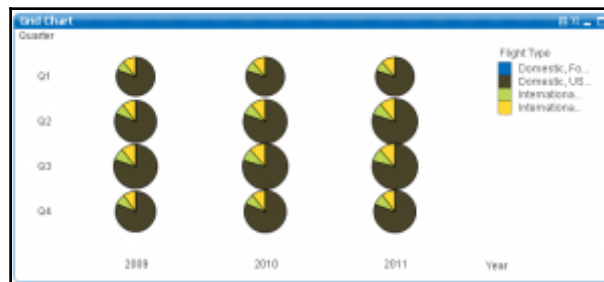
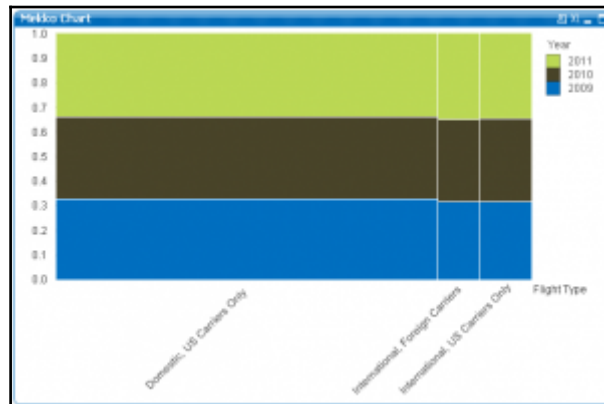
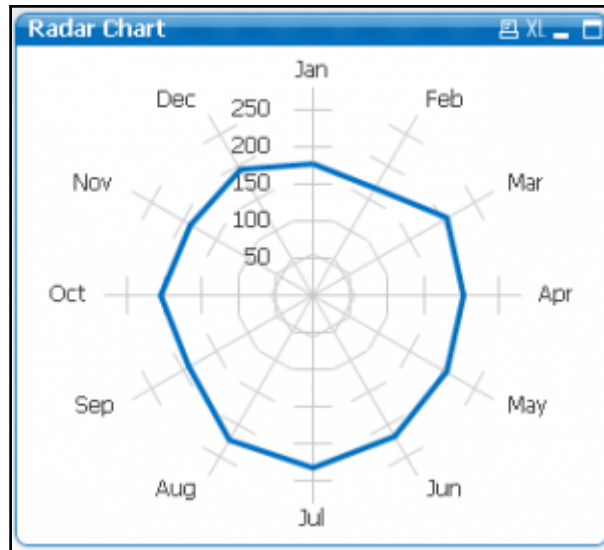


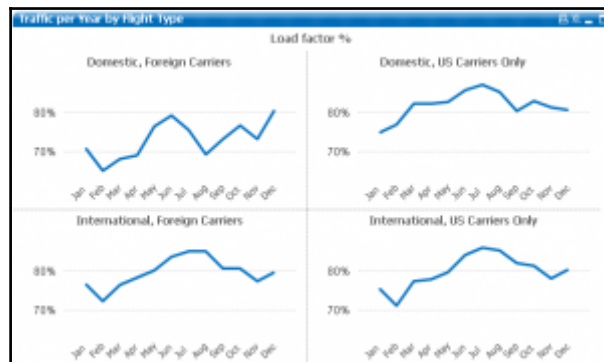
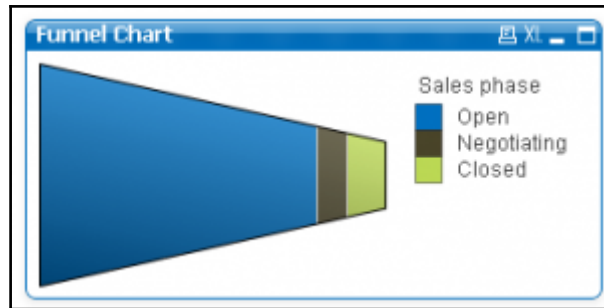
KPIs per Airline

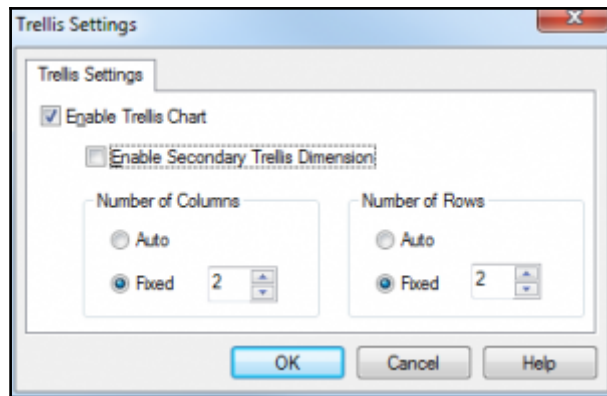
Airline	Load Factor %	Performed vs scheduled flights	Air time %
Comair Inc.: OH	74.5%	108.6%	71.0%
Seaboard Aviation: GB	70.6%	97.4%	71.0%
Air Wisconsin Airlines Corp: ZW	71.1%	94.6%	70.7%
Pinnacle Airlines Inc.: DE	76.9%	96.7%	70.2%
Chautauque Airlines Inc.: SP	72.6%	96.3%	70.4%
	78.6%	110.2%	83.3%

Airline	# Departures Performed	# Departures Scheduled
40-Mile Air: Q5	1.00	0.00
40-Mile Air: Q5	2.00	0.00
40-Mile Air: Q5	3.00	0.00
40-Mile Air: Q5	4.00	0.00
40-Mile Air: Q5	5.00	0.00
40-Mile Air: Q5	6.00	0.00
40-Mile Air: Q5	7.00	0.00
40-Mile Air: Q5	8.00	0.00
40-Mile Air: Q5	9.00	0.00
40-Mile Air: Q5	10.00	0.00
40-Mile Air: Q5	11.00	0.00
40-Mile Air: Q5	12.00	0.00
40-Mile Air: Q5	13.00	0.00
40-Mile Air: Q5	14.00	0.00

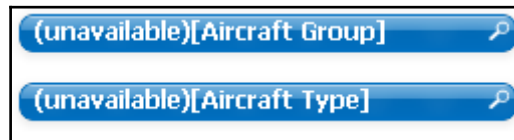
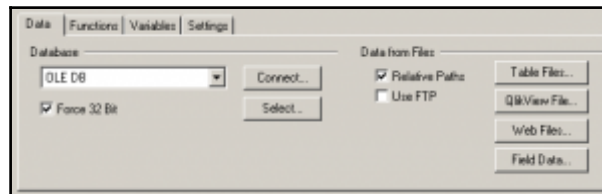
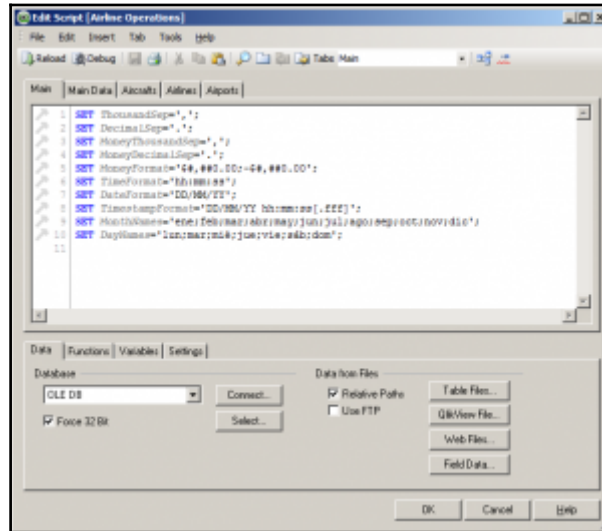


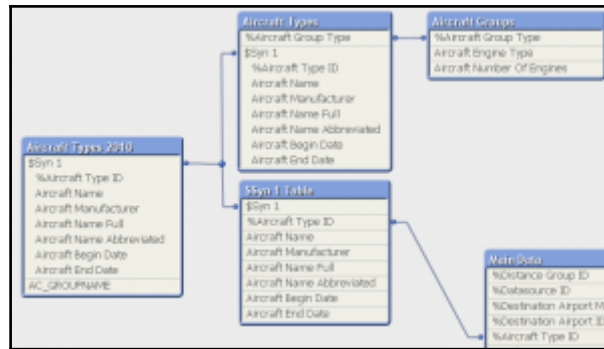






Chapter 8: Scripting





Aircraft Types								
%Aircraft Type ID								
Aircraft Name								
Aircraft Manufacturer								
Aircraft Name Full								
Aircraft Name Abbreviated								
Aircraft Begin Date								
Aircraft End Date								
Aircraft Engine Type								
Aircraft Number Of Engines								

Table1			Table2		
A	B	C	B	C	D
1	1	1	2	2	2
2	2	2	3	3	3
3	3	3	5	5	5

Table1 - JOIN			
A	B	C	D
1	1	1	
2	2	2	2
3	3	3	3
	5	5	5

Table1 - INNER JOIN			
A	B	C	D
2	2	2	2
3	3	3	3

Table1 - OUTER JOIN			
A	B	C	D
1	1	1	
2	2	2	2
3	3	3	3
	5	5	5

Table1 - LEFT JOIN			
A	B	C	D
1	1	1	
2	2	2	2
3	3	3	3

Table1 - RIGHT JOIN			
A	B	C	D
	5	5	5
2	2	2	2
3	3	3	3

Table1		
A	B	C
1	1	1
2	2	2
3	3	3

Table2		
B	C	D
2	2	2
3	3	3
5	5	5

Table1		
A	B	C
1	1	1
2	2	2
3	3	3

Table2		
B	C	D
2	2	2
3	3	3

Table1		
A	B	C
1	1	1
2	2	2
3	3	3

Table2		
B	C	D
2	2	2
3	3	3
5	5	5

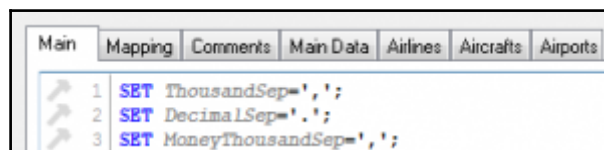
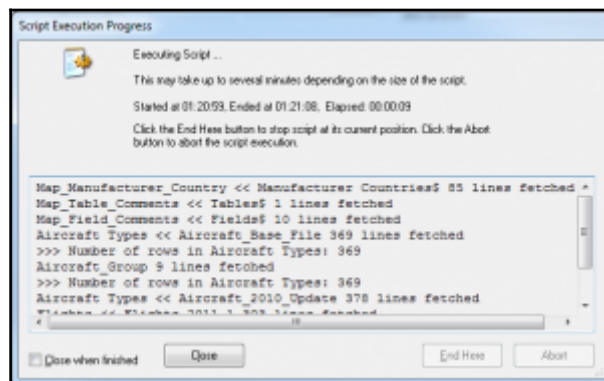
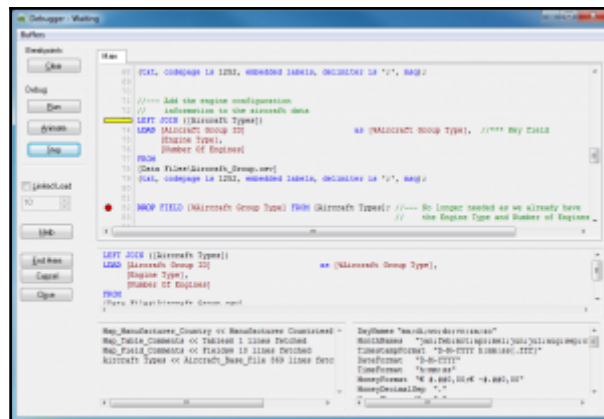
A	B	C	D
1	1	1	
2	2	2	
3	3	3	
	2	2	2
	3	3	3
	5	5	5

Aircraft	
Name	Flt/Amphib Turbine
Engine Type	Land-Turbine
Number of Engines	Piston-450+ Hp
Manufacturer	Piston-Lt 450 Hp
Manufacturer Coun...	A-318
	A300-600/R/Cf/Rcf
	A300-600St(Belug:
	A300-B2

```

Edit Script [C:\Users\Barry\Dropbox\Projects\QlikView Book\Rewrites\6068_07\Code\Chapter 7.qvw]
File Edit Insert Tab Tools Help
Reload Debug
Information Main Mapping Aircraft Types Flights
12
13 //===== [ Map_Manufacturer_Country ]=====
14
15 Map_Table_Comments:
16 MAPPING
17 LOAD TableName
18 Comment
19 FROM
20 [Data Files\Comments.xls]
21 ;biff, embedded labels, table is Tables4;

```



```

Information | Main | Mapping | Comments | Main Data | Tables | Views | Reports
1 //-----[ Aircraft Types ]-----
2
3 [Aircraft Types]
4 LOAD AC_TYPEID as [Aircraft Type ID],
5 AC_GROUP as [Aircraft Group Type],
6 SERI_NAME as [Aircraft Name],
7 MANUFACTURER as [Aircraft Manufacturer],
8 ApplyMap('Map_Manufacturer_Country', MANUFACTURER, 'Unknown') as [Aircraft Manufacturer Country],
9 LONG_NAME as [Aircraft Name Full],
10 SHORT_NAME as [Aircraft Name Abbreviated],
11 BEGIN_DATE as [Aircraft Begin Date],
12 END_DATE as [Aircraft End Date],
13 IF((Year(BEGIN_DATE) < 1990, 'Classic', 'Current') as [Aircraft Age Classification]
14 FROM
15 [..Data Files\CSV\Aircraft_Base_File.csv]
16 (txt, codepage is 1252, embedded labels, delimiter is ',', msg);
17
18 /*--- Add the engine configuration information to the aircraft data
19 LEFT JOIN [Aircraft Types]
20 LOAD [Aircraft Group ID] as [Aircraft Group Type], /*** Key field
21 [Aircraft Engine Type],
22 [Aircraft Number of Engines]
23 FROM
24 [..Data Files\CSV\Aircraft_Group.csv]
25 (txt, codepage is 1252, embedded labels, delimiter is ',', msg);
26
27 /*--- No longer this way as we just joined the Engine Type and Number of Engines
28 // to the Aircraft Types table.
29 DROP FIELD [Aircraft Group Type] FROM [Aircraft Types];

```

```

Information | Main | Mapping | Comments | Main Data | Tables | Views | Reports
1 //-----[ Information ]-----
2
3 Application: Airline Operations.qvw
4
5 Version: 1.0
6
7 Author: Barry Smeeman / Mike Garcia
8 barry@qixitx.com / Mike.Garcia@gmail.com
9
10 Date created: May 1st 2012
11
12 Date last modified: June 25th 2012
13
14 Goal of application: NightCloud Airline has the intention to enter the
15 US market. This application is intended to help
16 determine if this is a sensible business case at this
17 moment, by analyzing historical air travel data.
18
19
20 -----[ Change Log ]-----
21
22
23 Version: 1.0
24
25 Date modified: June 25th 2012
26
27 Modified by: Barry Smeeman
28
29 Changes:
30 - Created new Aircraft dimension table
31 - Cleaned up script by adding tabs and adding comments
32 - Added information tab
33
34
35
36 Version: 0.1
37
38 Date modified: May 1st 2012
39
40 Modified by: Mike Garcia
41
42 Changes:
43 - Initial version, no changes
44
45
46 -----/

```

```

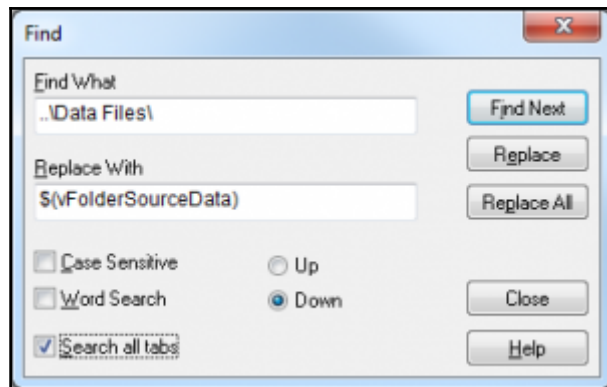
Information | Main | Mapping | Comments | Main Data | Admin | Aircraft | Reports
-----|-----|-----|-----|-----|-----|-----|-----
1 //***** Information *****
2
3 Application: Airline Operations.qvw
4
5 Version: 1.0
6
7 Author: Barry Sacresen / Mike Garcia
8        barry@qlikfix.com / mike.garcia@gmail.com
9
10 Date created: May 1st 2012
11
12 Date last modified: June 29th 2012
13
14 Goal of application: HighCloud Airlines has the intention to enter the
15                      US market. This application is intended to help
16                      determine if this is a sensible business case at this
17                      moment, by analyzing historical air travel data.
18
19
20 -----| Change log |-----
21
22
23 Version: 1.0
24
25 Date modified: June 29th 2012
26
27 Modified by: Barry Sacresen
28
29 Changes: - Created new Aircrafts dimension table
30          - Cleaned up script by adding table and adding comments
31          - Added information tab
32
33 -----
34
35 Version: 0.1
36
37 Date modified: May 1st 2012
38
39 Modified by: Mike Garcia
40
41 Changes: - Initial version, no changes
42
43 -----
44
45 //*****

```

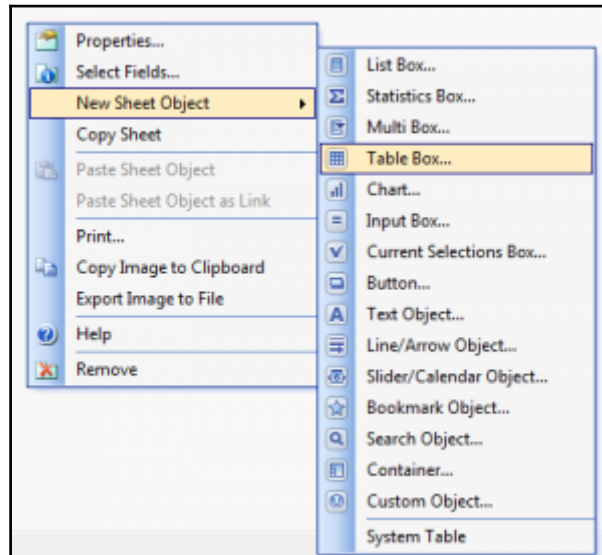
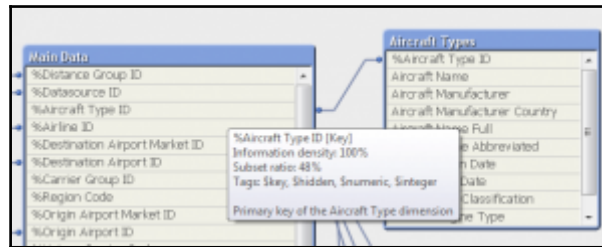
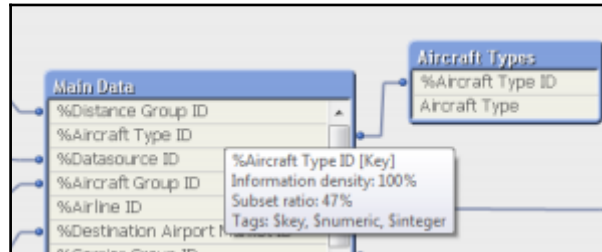
```

Information | Main | Mapping | Comments | Main Data | Admin | Aircraft | Reports
-----|-----|-----|-----|-----|-----|-----|-----
1 //***** Aircraft Types *****
2
3 [Aircraft Types]:
4 LOAD
5   AC_TYPEID                as (Aircraft Type ID),
6   AC_GROUP                 as (Aircraft Group Type),
7   ENG_NAME                 as (Aircraft Engine),
8   MANUFACTURER             as (Aircraft Manufacturer),
9   AppMap('Map_Manufacturer_Country', |
10          MANUFACTURER, 'Country')    as (Aircraft Manufacturer Country),
11   LONG_NAME                as (Aircraft Name Full),
12   SHORT_NAME               as (Aircraft Name Abbreviated),
13   REG_DATE                 as (Aircraft Regis Date),
14   ENG_SERV                 as (Aircraft Eng Desig),
15   IF((REG_DATE) < 1990,
16      'Classic', 'Current')    as (Aircraft Age Classification)
17 FROM
18 [..\Data Files\CPI\Aircraft_Type_File.csv]
19 (set, codepage is 1252, embedded labels, delimiter is ',', eolr);
20
21 /*--- Add the engine configuration information to the aircraft data
22 LEFT JOIN ([Aircraft Types])
23 LOAD
24   (Aircraft Group ID)      as (Aircraft Group Type), /*** Key field
25   (Aircraft Engine Type),
26   (Aircraft Number Of Engines)
27 FROM
28 [..\Data Files\CPI\Aircraft_Group.csv]
29 (set, codepage is 1252, embedded labels, delimiter is ',', eolr);
30
31 /*--- No longer this key as we just joined the Engine Type and Number of Engines
32 // to the Aircraft Types table.
33 DROP FIELD (Aircraft Group Type) FROM [Aircraft Types];

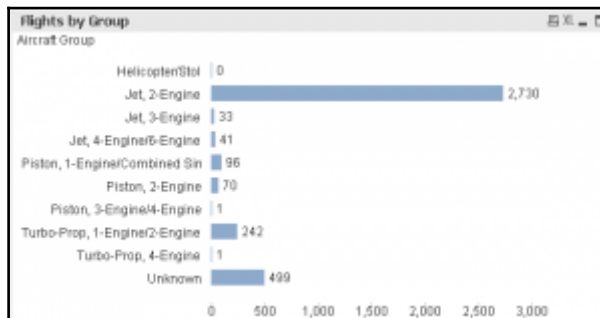
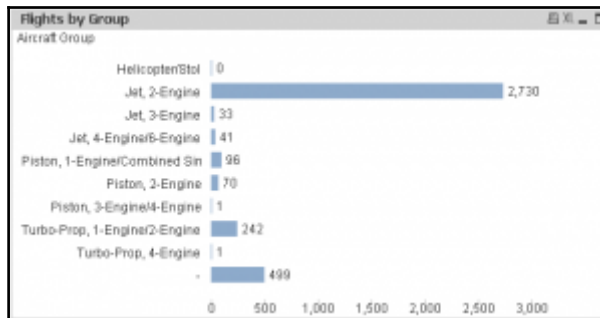
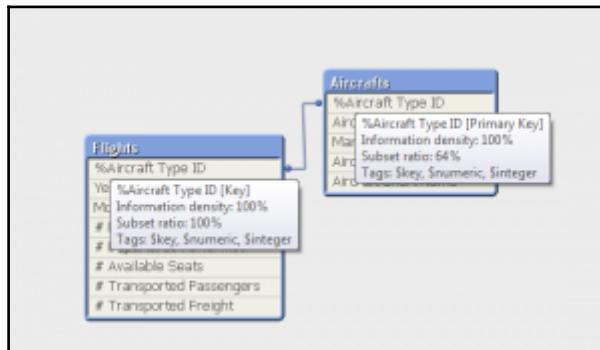
```

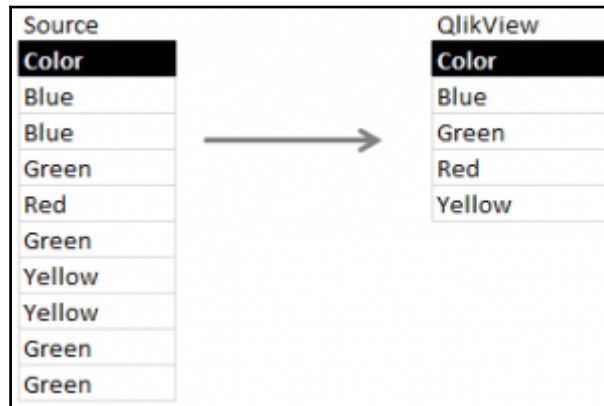
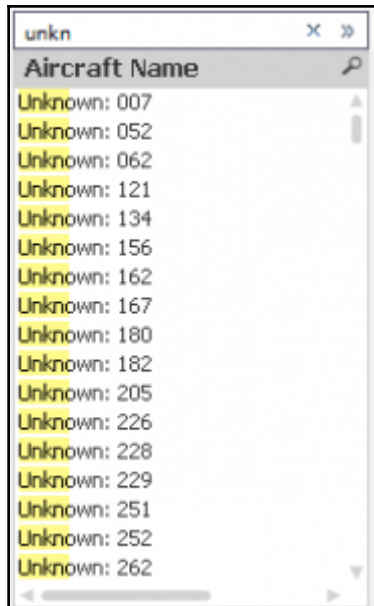


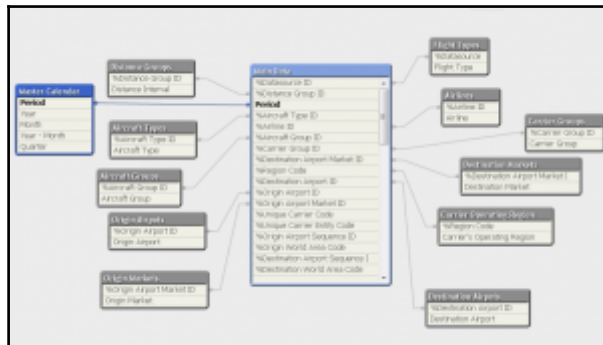
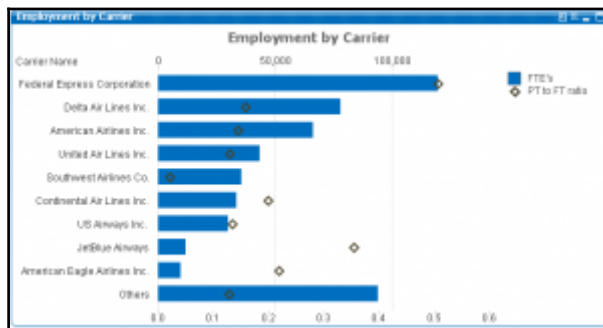
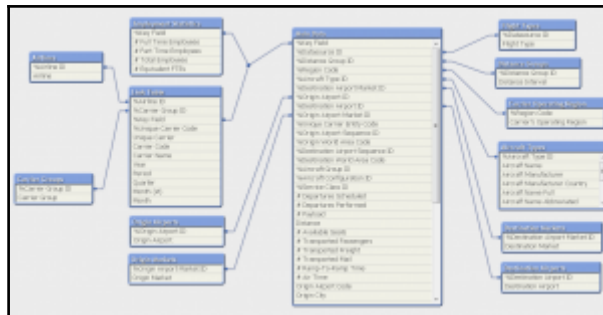
Chapter 9: Data Modeling Best Practices



%Aircraft Type ID	# Air Time	# Available Seats	# Departures Perfo...	# Departures Sche...
007-	-	-	-	-
009-	-	-	-	-
009-	-	-	-	-
020-	-	-	-	-
024-	-	-	-	-
029-	-	-	-	-
031-	-	-	-	-
032-	-	-	-	-







Chapter 10: Basic Data Transformation

Report Date: May 27, 2012
 Report Name: Production Planning
 Generated by: System User

Date	Plant #	Product Line ID	Estimated Production	Date	Plant #	Product Line ID	Estimated Production
20120528	1	00	99	20120700	1	00	189
20120529	1	00	85	20120701	1	04	80
20120530	1	04	112	20120702	1	04	80
20120531	1	00	188	20120703	1	00	80
20120601	1	00	188	20120704	1	05	98
week 1 Total			557	week 6 Total			507
20120602	1	00	171	20120705	1	00	73
20120603	1	04	214	20120706	1	04	114
20120604	1	04	293	20120707	1	04	181
20120605	1	00	124	20120708	1	00	104
20120606	1	00	181	20120709	1	05	282
week 2 Total			504	week 7 Total			424
20120607	1	00	97	20120710	1	00	137
20120608	1	04	183	20120711	1	04	282
20120609	1	00	82	20120712	1	00	182
20120610	1	00	98	20120713	1	05	186
week 3 Total			370	week 8 Total			370
20120611	1	00	189	20120714	1	00	180
20120612	1	04	312	20120715	1	04	112
20120613	1	00	188	20120716	1	00	284
20120614	1	00	188	20120717	1	05	344
week 4 Total			712	week 9 Total			547
20120615	1	00	143	20120718	1	00	181
20120616	1	04	151	20120719	1	04	181
20120617	1	04	120	20120720	1	04	130
20120618	1	00	184	20120604	1	00	184
20120619	1	00	78	20120605	1	05	178
week 5 Total			636	week 10 Total			598

File Wizard - Type

File Type: Delimited Fixed Record Df Excel (xls) Excel (xlsx) Html Qvd Ini Qvs

Delimiter: Tab Quoting: MSQ

Header Size: None Character Set: Western European

Ignore BCP:

Report Date: May 27, 2012	X	Y	X	Y
Report Name: Production Planning				
Generated by: System User				
Date	Plant #	Product Line		
20120528	1	00		
20120529	1	04		
20120530	2	04		
20120531	2	00		
20120601	1	05		
Week 1 Total				

< Back Next > Finish Cancel Help

File Wizard - Transform

The transformation step can change badly formatted data into a traditional table. This is especially useful with HTML data. But the transformation step requires large amounts of RAM and is not useful when the data is more than a hundred thousand field values.

Enable Transformation Step

< Back Next > Finish Cancel Help

File Wizard : Transform

Garbage | Fill | Column | Unwrap | Rotate

Delete Marked
Conditional Delete...
Undo
Redo
Reset

1	2	3	4	5	6
1	Report Date: May 27, 1				36
2	Report Name: Products				35
3	Generated by: System				34
4					33
5	Date	Plant #	Product Line	Quantity/Production	Date
6	-----	-----	-----	-----	-----
7	20120528	1	03	96	2012075
8		1	04	95	2012076
9	20120529	2	04	110	2012076
10	20120530	2	03	103	2012076
11	20120601	1	03	128	2012076
12	Week 1 Total			507	Week 1 T
13	20120604	1	03	173	2012076
14		1	04	294	2012076
15	20120605	2	04	283	2012076
16	20120606	2	03	124	2012076
17	20120607	1	03	102	2012076
18	Week 2 Total			524	Week 2 T
19	20120611	1	03	97	2012076
20		1	04	180	2012076
21	20120612	2	04	102	2012076
22	20120613	2	03	92	2012076
23	20120614	1	03	96	2012076
24	Week 3 Total			579	Week 3 T

< Back Next > Refresh Cancel Help

File Wizard : Transform

Garbage | Fill | Column | Unwrap | Rotate

Delete Marked
Conditional Delete...
Undo
Redo
Reset

1	2	3	4	5	6
1	Report Date: May 27, 2				36
2	Report Name: Products				35
3	Generated by: System				34
4					33
5	Date	Plant #	Product Line	Quantity/Production	Date
6	-----	-----	-----	-----	-----
7	20120528	1	03		30
8		1	04		29
9	20120529	2	04		28
10	20120530	2	03		27
11	20120601	1	03		26
12	Week 1 Total				25
13	20120604	1	03		24
14		1	04		23
15	20120605	2	04		22
16	20120606	2	03		21
17	20120607	1	03		20

< Back Next > Refresh Cancel Help

Specify Row Condition

Condition

Compare with value Compare with column Range All Rows

Column

1 contains Total 0

Options

Case Sensitive Not

Conditions (AND)

`RowCondition(1 - 1)Condition: Total`

File Wizard - Transform

Garbage (1) | Columns | Unwrap | Status

Group

Conditional Unwrap...

Undo

Redo

Reset

1	2	3	4	5	6
Code	Plant #	Product Line ID	Estimated Production	Unit	
01	01	01	01	01	01
02	01	01	02	02	02
03	01	01	03	03	03
04	01	01	04	04	04
05	01	01	05	05	05
06	01	01	06	06	06
07	01	01	07	07	07
08	01	01	08	08	08
09	01	01	09	09	09
10	01	01	10	10	10
11	01	01	11	11	11
12	01	01	12	12	12
13	01	01	13	13	13
14	01	01	14	14	14
15	01	01	15	15	15
16	01	01	16	16	16
17	01	01	17	17	17
18	01	01	18	18	18
19	01	01	19	19	19
20	01	01	20	20	20
21	01	01	21	21	21
22	01	01	22	22	22
23	01	01	23	23	23
24	01	01	24	24	24

< Back Next > Finish Cancel Help

File Wizard - Transform

Garbage (1) | Columns | Unwrap | Status

Group

Conditional Unwrap...

Undo

Redo

Reset

1	2	3	4	5	6
Code	Plant #	Product Line ID	Estimated Production	Unit	
01	01	01	01	01	01
02	01	01	02	02	02
03	01	01	03	03	03
04	01	01	04	04	04
05	01	01	05	05	05
06	01	01	06	06	06
07	01	01	07	07	07
08	01	01	08	08	08
09	01	01	09	09	09
10	01	01	10	10	10
11	01	01	11	11	11
12	01	01	12	12	12
13	01	01	13	13	13
14	01	01	14	14	14
15	01	01	15	15	15
16	01	01	16	16	16
17	01	01	17	17	17
18	01	01	18	18	18
19	01	01	19	19	19
20	01	01	20	20	20
21	01	01	21	21	21
22	01	01	22	22	22
23	01	01	23	23	23
24	01	01	24	24	24

< Back Next > Finish Cancel Help

Specify Row Condition

Condition

Compare with value Compare with column Range All Rows

Conditions (AND)

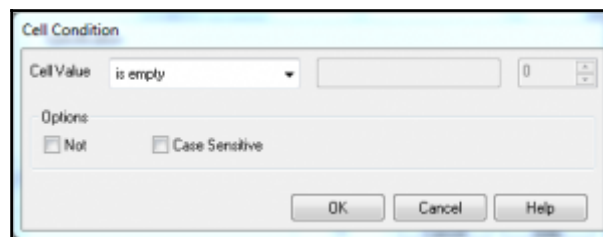
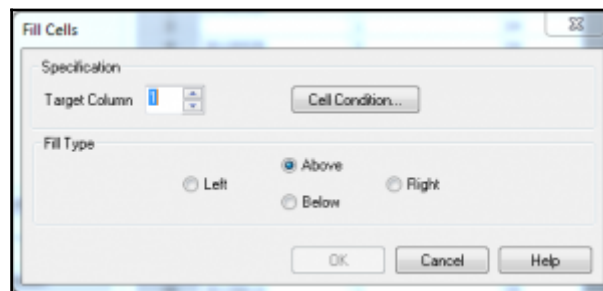
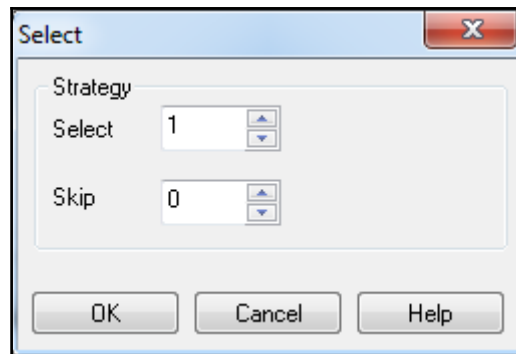
RowEnd[CellValue, 1, StrEnd[contain, Date]]

Cell Index Position

From Top
 From Bottom

Cell Index Position

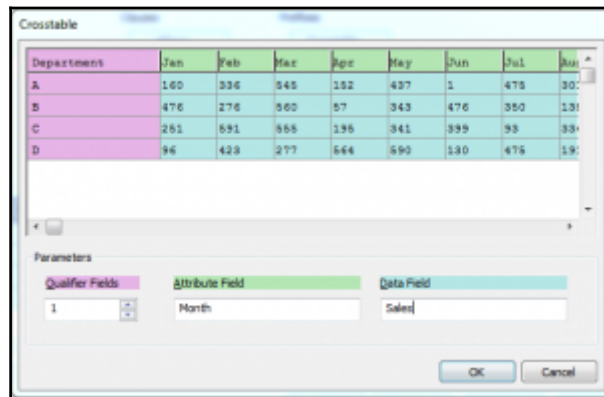
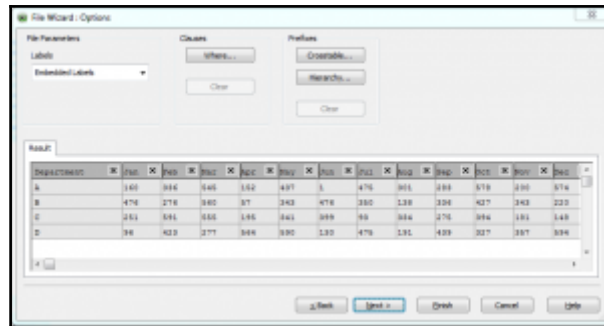
From Top
 From Bottom



	1	2	3	
1	Date	Plant #	Product Line	26
2	20120528	1	03	25
3	20120528	1	04	24
4	20120529	2	04	23
5	20120530	2	03	22
6	20120601	1	05	21
7	20120604	1	03	20
8	20120604	1	04	19
9	20120605	2	04	18
10	20120606	2	03	17
11	20120607	1	05	16
12	20120611	1	03	15
13	20120611	1	04	14
14	20120612	2	04	13
15	20120613	2	03	12
16	20120614	1	05	11
17	20120618	1	03	10

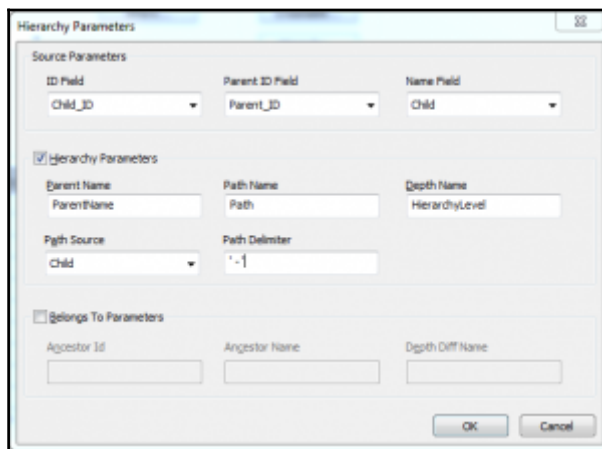
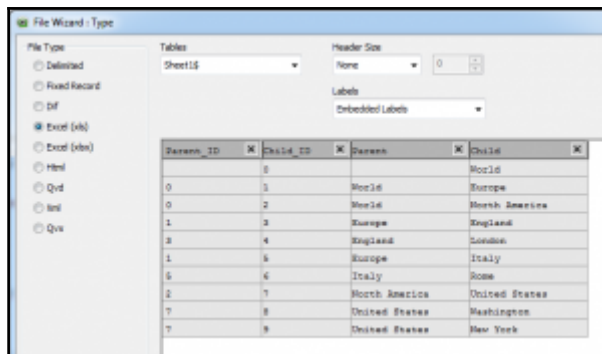
Date	Plant #	Product Line ID	Estimated Prod...	
20120528	1	03	99	
20120528	1	04	85	
20120529	2	04	112	
20120530	2	03	103	
20120601	1	05	108	
20120604	1	03	173	
20120604	1	04	234	
20120605	2	04	291	
20120606	2	03	124	
20120607	1	05	102	
20120611	1	03	97	
20120611	1	04	193	

Department	Jan	Feb	Mar	Apr	May	Jun	Jul	Aug	Sep	Oct	Nov	Dec
A	249	316	345	330	437	5	475	391	339			
B	474	276	340	37	343	476	340	138	334			
C	310	391	365	136	340	399	34	394	376			
D	36	423	177	344	340	133	475	181	438			

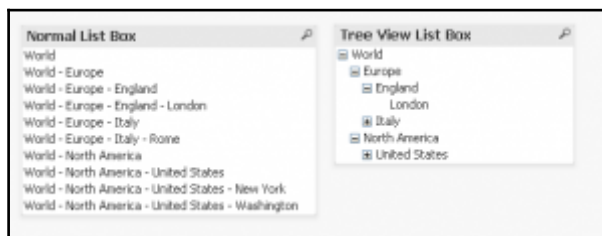


Result		
Department	Month	Sales
A	Jan	160
A	Feb	336
A	Mar	545
A	Apr	152
A	May	437
A	Jun	1
A	Jul	475
A	Aug	301
A	Sep	283
A	Oct	578
A	Nov	200
A	Dec	574
B	Jan	476

- ☐ World
 - ☐ Europe
 - ☐ England
 - London
 - ☐ Italy
 - Rome
 - ☐ North America
 - ☐ United States
 - New York
 - Washington



Parent_ID	Child_ID	Parent	Child	Path	Depth	ParentName	Path	Depth	
	0	World			0	World			
0	1	World	Europe		1	World	Europe		
0	2	World	North America		1	World	North America		
1	3	Europe	England		2	World	Europe	England	
3	4	England	London		3	World	Europe	England	London
1	5	Europe	Italy		2	World	Europe	Italy	
5	6	Italy	Rome		3	World	Europe	Italy	Rome
2	7	North America	United States		2	North America	United States		
7	8	United States	Washington		3	North America	United States	Washington	
7	9	United States	New York		3	North America	United States	New York	



File Wizard : Type

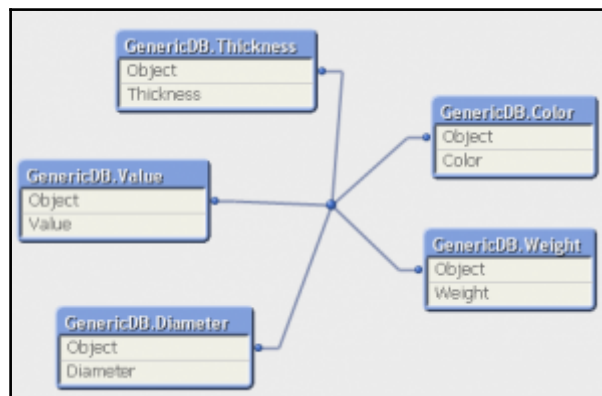
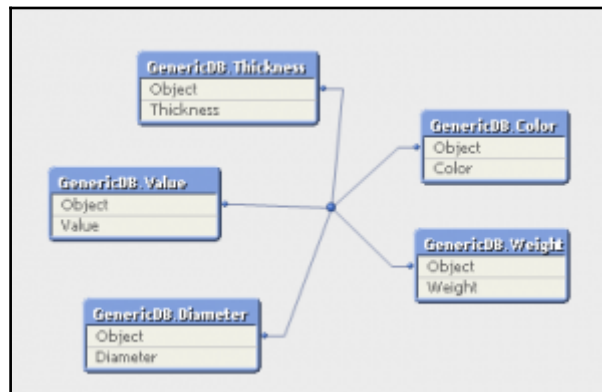
File Type: Delimited Fixed Record dfl Excel (xls) Excel (xlsx) HTML Qvd XML Qvx

Tables: GenericDB

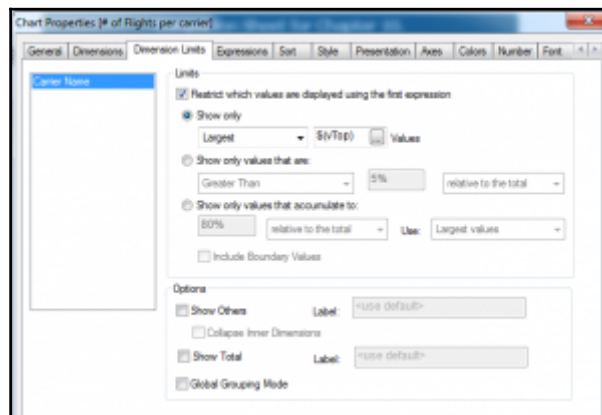
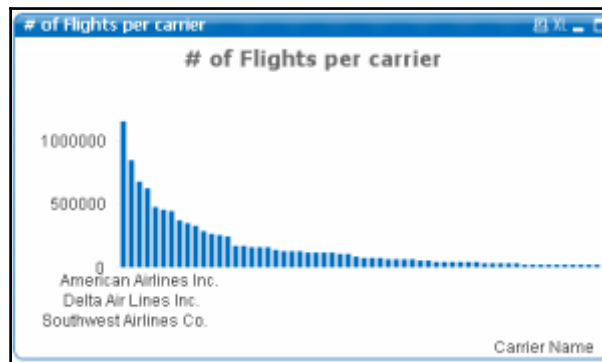
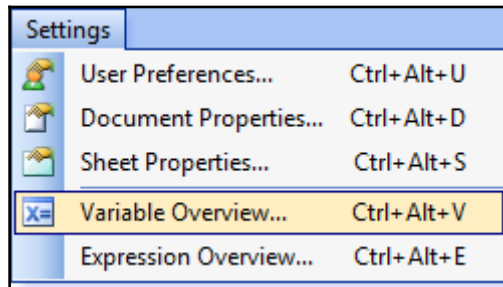
Header Size: None

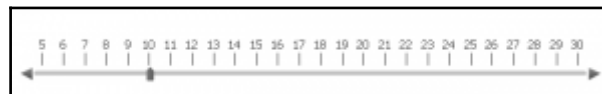
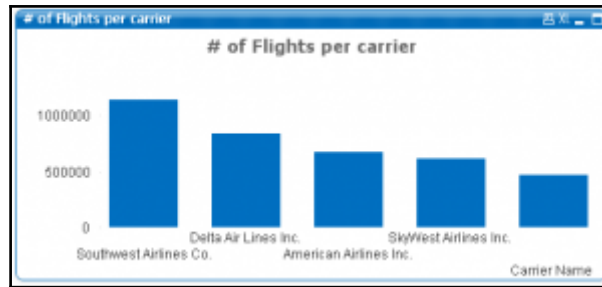
Labels: Embedded Labels

Object	Attribute	Value
Ball	Color	Yellow
Ball	Weight	120 g
Ball	Diameter	8 cm
Coin	Color	Gold
Coin	Value	\$100.00
Coin	Diameter	2.5 cm
Hockey Puck	Color	Black
Hockey Puck	Diameter	7.62 cm
Hockey Puck	Thickness	2.5 cm
Hockey Puck	Weight	165 g



Chapter 11: Advanced Expressions





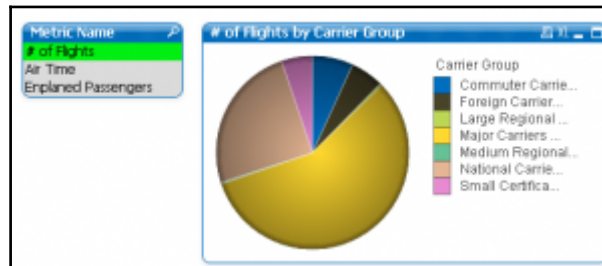
Carrier Name	FTE % to Total
	100.00%
Federal Express Corporation	22.82%
American Airlines Inc.	12.81%
Delta Air Lines Inc.	12.75%
United Air Lines Inc.	8.45%
Southwest Airlines Co.	6.79%
Continental Air Lines Inc.	6.52%
US Airways Inc.	5.78%
JetBlue Airways	2.16%

Carrier Group	# of Flights	# of Flights (thousands)	# of Flights (millions)
	10,750,155	10,750.2	10.75
Commuter Carriers (air t...	733,959	734.0	0.73
Foreign Carriers	595,573	595.6	0.60
Large Regional Carriers...	41,014	41.0	0.04
Major Carriers (carriers...	6,129,188	6,129.2	6.13
Medium Regional Carrier...	25,154	25.2	0.03
National Carriers (carrier...	2,663,803	2,663.8	2.66
Small Certificated Carie...	561,464	561.5	0.56

Inline Data Wizard

Edit Tools

	Metric Name	eMetric
1	# of Flights	eDeparturesPerformed
2	Enplaned Passengers	eEnplanedPassengers
3	Air Time	eAirTime



Enplaned passengers (billions)

Carrier Group	Year	Enplaned passengers (billions)	Departures Performed (thousands)	Participation to the whole	% to the Carrier's whole	% to the Carrier's whole (per year)
Commuter Carrier (air)	0	12.694	744.76	2.3%	33.9%	100.0%
Foreign Carrier	0	67.966	562.53	1.7%	32.2%	100.0%
Aerodynamics Inc.: A3J	0	0.021	0.56	0.0%	0.2%	0.2%
Alma Air Cargo: IH	0	0.000	0.25	0.0%	2.4%	3.5%
Asia Pacific: P/Q	0	0.003	0.81	0.0%	0.2%	0.3%
Avjet Corporation: GWQ	0	0.000	33.25	0.0%	3.0%	4.4%
Capital Cargo International	0	0.177	1.87	0.0%	0.3%	0.7%
Cargo Air: R	0	2.738	108.80	0.3%	31.5%	48.8%
Compass Airlines: CP	0	1.260	55.13	0.2%	25.9%	29.5%
Florida West Airlines Inc.: P	0	0.000	4.02	0.0%	1.2%	1.7%
Gulf And Caribbean Cargo	0	0.000	1.94	0.0%	0.5%	0.7%
Lندن Air Cargo Airlines: L2	0	1.307	25.30	0.1%	7.3%	10.8%
National Air Cargo Group, L	0	0.000	4.90	0.0%	1.4%	2.2%
Northern Air Cargo Inc.: NC	0	0.004	1.93	0.0%	0.3%	0.7%
Ohio Airlines: P/Q	0	0.339	3.02	0.0%	0.9%	0.4%
Ryan International Airlines	0	0.802	6.90	0.0%	2.0%	2.8%
Tadweelw: Airlines: WJ	0	0.000	0.95	0.0%	0.2%	0.4%
USA Air Airlines Inc.: L27	0	0.139	2.45	0.0%	0.7%	1.0%
Vision Airlines: OJ	0	7.665	234.44	0.7%	67.0%	100.0%

of Flights

Flight Type	# of Flights
	32,296,313
Domestic, US Carriers Only	27,889,508
International, US Carriers Only	2,663,621
International, Foreign Carriers	1,662,792
Domestic, Foreign Carriers	80,392

Interstate Routes by Carrier	
Carrier Name	Interstate Routes /
	2,655
Delta Air Lines Inc.	1,145
Miami Air International	864
Southwest Airlines Co.	821
Federal Express Corporation	708
ExpressJet Airlines Inc.	707
USA Jet Airlines Inc.	688
American Airlines Inc.	637
SkyWest Airlines Inc.	609
Atlantic Southeast Airlines	591

Carrier Classification by # of Interstate Routes	
Interstate Routes	# of Carriers /
	311
2	41
1	32
4	20
8	14
6	14
5	9
12	8
3	7
14	6

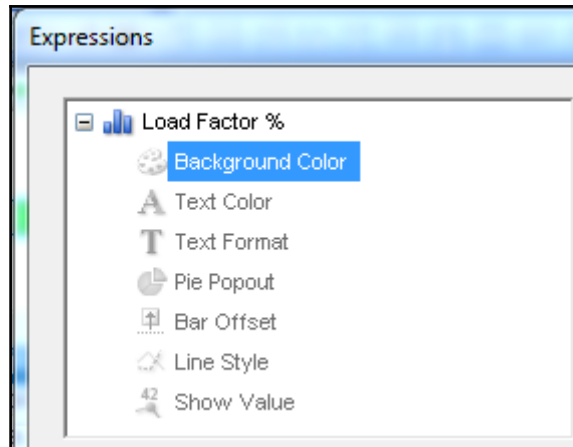
Interstate Routes by Carrier	
Carrier Name	Interstate Routes /
	2,655
Delta Air Lines Inc.	1,145
Miami Air International	864
Southwest Airlines Co.	821
Federal Express Corporation	708
ExpressJet Airlines Inc.	707
USA Jet Airlines Inc.	688
American Airlines Inc.	637
SkyWest Airlines Inc.	609
Atlantic Southeast Airlines	591

1145

Max Value: 1145
Min Value: 0
Avg Value: 77.813505

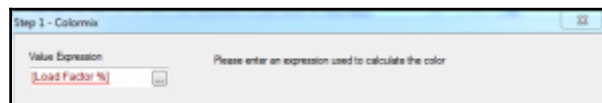
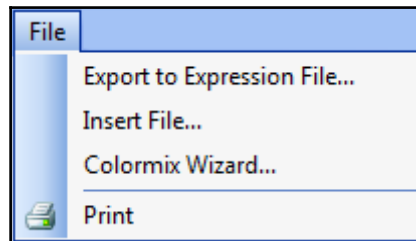
Carrier Name	From - To Airport ID	Load Factor %
		78.6%
40-Mile Air	11245 - 15236	10.3%
40-Mile Air	15236 - 11630	22.7%
40-Mile Air	11036 - 15236	0.8%
40-Mile Air	11630 - 12141	28.6%
40-Mile Air	12141 - 15236	25.1%
40-Mile Air	15236 - 11036	1.4%
40-Mile Air	15236 - 11245	11.7%
40-Mile Air	11630 - 15236	30.0%
Abaco Air, Ltd.	13289 - 13303	41.7%
Abaco Air, Ltd.	15147 - 13303	66.7%

Carrier Name	Average Load Factor per Route	Airline's Global Load Factor
	59.9%	78.6%
40-Mile Air	14.5%	15.2%
Abaco Air, Ltd.	57.4%	50.2%
ABC Aerolíneas SA de CV dba...	89.0%	91.5%
ACM AIR CHARTER GmbH	15.9%	16.0%
Acropolis Aviation Ltd.	27.2%	28.1%
Aer Lingus Plc	76.0%	77.0%
Aerolíneas Nacionales, S.A....	60.9%	64.6%
Aeroflot Russian Airlines	79.1%	80.1%
Aerolíneas Argentinas	80.9%	80.9%
Aerolíneas Galapagos S A Aer...	68.3%	73.2%



Load Factor % Heat Map

Carrier Name	Year	2011				
		Jan	Feb	Mar	Apr	May
Island Air Service		43.62%	28.36%	41.32%	47.29%	47.29%
Island Airlines LLC		62.49%	66.17%	66.44%	66.27%	66.41%
Japan Air Lines Co., Lt.		76.60%	80.94%	70.92%	62.41%	62.41%
Jet Aviation LP		51.62%	56.62%	61.90%	62.78%	62.78%
Jet Airways (India) Li.		70.67%	64.40%	76.56%	62.94%	62.94%
Jet Aviation Business		22.22%	40.97%	11.11%	-	-
Jet Inx AG		-	-	-	-	-
JetAlliance Flugbetrie.		20.00%	-	20.00%	24.49%	24.49%
JetBlue Airways		77.07%	76.42%	61.52%	76.75%	76.75%
JetClub AG		-	-	11.52%	-	-
Jetstar Airways Pty Li.		90.25%	74.22%	79.26%	74.51%	74.51%
Jin Air Co Ltd.		97.96%	82.96%	66.50%	62.99%	62.99%
Korean Air		-	-	59.62%	61.39%	61.39%
Katmai Air		-	-	-	-	-
Kemrose Air Harbor		46.67%	46.30%	46.95%	51.55%	51.55%
Klm Royal Dutch Ark		76.95%	70.15%	60.62%	67.25%	67.25%



Step 2 - Colormix

Auto Normalize

Upper Limit

Intermediate

Lower Limit

Reverse

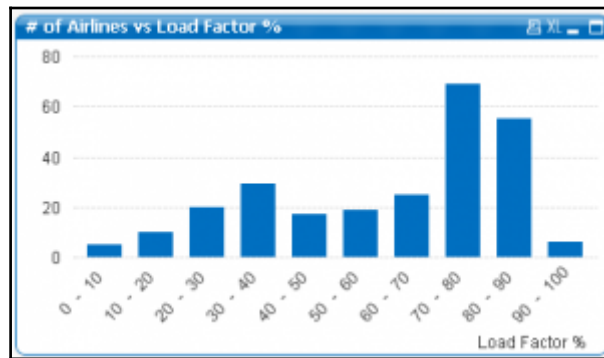
Carrier Name	Year			
	Jan	Feb	Mar	Apr
JetAlliance Flugbetrie	20.00%	20.00%	24.49%	24.49%
JetBlue Airways	77.62%	76.42%	81.92%	78.75%
JetClub AG	-	-	11.90%	-
Jetstar Airways Pty Li	93.29%	74.20%	79.25%	74.51%
Jin Air Co Ltd	67.66%	60.66%	69.50%	50.50%
Korean Air	-	-	59.62%	51.29%
Kuwait Air	46.67%	46.20%	46.66%	51.29%
Kemrose Air Harbor	75.56%	70.15%	80.62%	87.30%
Korean Air Lines Co...	81.34%	73.95%	74.55%	75.50%
Kuwait Airways Corp.	69.12%	67.11%	67.53%	76.28%
Lacsa	83.37%	77.69%	87.14%	80.30%
Lan-Chile Airlines	81.80%	80.76%	78.76%	77.27%
LAN Argentina	79.25%	76.37%	77.36%	78.51%
Lan Ecuador	84.63%	84.69%	79.23%	73.49%
Lan Peru Airlines	85.53%	85.90%	82.69%	82.21%

Interstate Routes by Carrier	
Carrier Name	Interstate Routes /
	2,655
Delta Air Lines Inc.	1,145
Miami Air International	864
Southwest Airlines Co.	821
Federal Express Corporation	708
ExpressJet Airlines Inc.	707
USA Jet Airlines Inc.	688
American Airlines Inc.	637
SkyWest Airlines Inc.	609
Atlantic Southeast Airlines	591

Interstate Routes by Carrier		
Carrier Name	Interstate Routes /	Interstate Routes Interval
	2,655	2600 <= x < 2700
Delta Air Lines Inc.	1,145	1100 <= x < 1200
Miami Air International	864	800 <= x < 900
Southwest Airlines Co.	821	800 <= x < 900
Federal Express Corporation	708	700 <= x < 800
ExpressJet Airlines Inc.	707	700 <= x < 800
USA Jet Airlines Inc.	688	600 <= x < 700
American Airlines Inc.	637	600 <= x < 700
SkyWest Airlines Inc.	609	600 <= x < 700
Atlantic Southeast Airlines	591	500 <= x < 600

# of Carriers by Inter	
Routes Interval	# of Carriers
	311
0 <= x < 100	256
100 <= x < 200	14
200 <= x < 300	13
300 <= x < 400	9
400 <= x < 500	4
500 <= x < 600	7
600 <= x < 700	3
700 <= x < 800	2
800 <= x < 900	2
1100 <= x < 1200	1

# of Carriers by Inter	
Routes Interval	# of Carriers
	311
0 - 100	256
200 - 300	13
800 - 900	2
100 - 200	14
700 - 800	2
500 - 600	7
400 - 500	4
600 - 700	3
300 - 400	9
1100 - 1200	1



The Dimensionality Function				
Carrier Group	Airline	Aircraft Name	Departures Performed (thousands)	Dimensionality
Commuter Carriers (air taxi)			733.06	1
Foreign Carriers			595.57	1
		Boeing 737-10...	0.00	3
		Boeing 737-20...	7.75	3
		Saab-Fairchild 3...	0.24	3
Large Regional Carriers (carriers with annual revenue of \$20 million to \$100 million)		Total	8.00	2
	Asia Pacific: PRQ		0.71	2
	Aryat Corporation: DWQ		1.97	2
	Capital Cargo Internat...		5.59	2
	Total		19.26	1
Major Carriers (carriers with...)			6,129.19	1
Medium Regional Carriers (...)			8.91	1
National Carriers (carriers w...)			2,644.94	1
Small Certificated Carriers (...)			561.46	1
Total			10,693.30	0

Avg Load Factor per Route					
Flight Type	Carrier Group	Carrier Name	Avg Load Factor per Route	Direct Load Factor	
Domestic, Foreign Car...	Commuter Carriers (...)		55.4%	75.3%	
			55.2%	63.9%	
		Airjet Corporation	34.5%	31.3%	
		Large Regional	Casino Express	63.0%	64.5%
		Carriers (Carriers with annual revenue of \$20 million to \$100 million)	Lynn Aviation d/b/a Pro...	72.1%	64.2%
			National Air Cargo Broc...	23.8%	32.3%
			Tahondjic Outfitters Limi...	27.9%	27.9%
		Total		40.3%	62.5%
			Major Carriers (Carrie...	72.6%	80.1%
			Medium Regional Car...	41.4%	48.7%
Domestic, US Carriers Only		National Carriers (Car...	58.9%	76.0%	
		Small Certificated Ca...	36.0%	55.0%	
	Total		55.7%	78.7%	
International, Foreign...			61.6%	78.8%	
International, US Carri...			66.9%	77.9%	
Total			57.4%	78.6%	

General | Dimensions | Dimension Limits | Expressions

- [-] Flight
- [-] Passengers
- [-] Freight
- [-] Mail

Add Expression
 Delete Expression
 Edit Expression
 Copy
 Export...
 Paste

General | Dimensions | Dimension Limits | Expressions

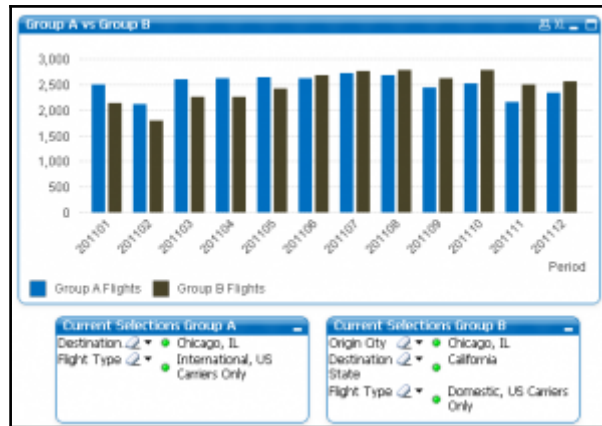
- [-] Flight
- [-] Passengers
- [-] Freight
- [-] Mail

Add Expression
 Paste
 Import...

Chapter 12: Set Analysis and Point In Time Reporting

PeriodID	Period	Year	Month	Year - Month	Quarter
1	200901	2009	Jan	2009-01	Q1
2	200902	2009	Feb	2009-02	Q1
3	200903	2009	Mar	2009-03	Q1
4	200904	2009	Apr	2009-04	Q2
5	200905	2009	May	2009-05	Q2
6	200906	2009	Jun	2009-06	Q2
7	200907	2009	Jul	2009-07	Q3
8	200908	2009	Aug	2009-08	Q3
9	200909	2009	Sep	2009-09	Q3
10	200910	2009	Oct	2009-10	Q4
11	200911	2009	Nov	2009-11	Q4
12	200912	2009	Dec	2009-12	Q4
13	201001	2010	Jan	2010-01	Q1
14	201002	2010	Feb	2010-02	Q1
15	201003	2010	Mar	2010-03	Q1

Carrier Group	Current Month Flights	Flights Previous Month	Flights Two Months Ago
	879,559	846,485	893,962
Major Carriers...	510,026	486,557	508,956
National Carriers...	217,773	210,652	219,263
Commuter Carriers...	57,789	56,819	61,644
Foreign Carriers	50,738	47,806	50,641
Small Certificat...	38,171	39,898	48,506
Large Regional...	3,044	2,875	2,943
Medium Regio...	2,018	1,878	2,009



Alternate States

Alternate State

Group A

- <inherited>
- <default state>
- Group A
- Group B
- <new state>

Origin and Destination - Group A					Origin and Destination - Group B											
Flight Type	IL	ND	PE	WV	IL	ND	PE	WV								
From Country	AB	IN	NE	PR	WY	AK	KS	NH	QC	YT						
From State	AL	KY	ND	RI	AR	LA	NL	SC	AZ	MA	NM	SD				
From City	BC	MB	NS	SK	CA	MD	NT	TN	CO	ME	NJ	TT				
From Airport	CT	MI	NV	TX	DE	MN	NY	UT	FL	MD	OH	VA				
To Country	GA	MS	OK	VT	HI	MT	ON	VT	IA	NB	OR	WA				
To State	ID	NC	PA	WI	IL	ND	PE	WV	AK	KS	NH	QC	YT			
To City	AR	LA	NL	SC	AZ	MA	NM	SD	BC	MB	NS	SK	CA	MD	NT	TN
To Airport	CO	ME	NJ	TT	CT	MI	NV	TX	DE	MN	NY	UT	FL	MD	OH	VA

Clear Ctrl+Shift+D Back Forward Lock Unlock

Clear All

Unlock and Clear All

Clear Specific State

Set Clear State

Reset Clear State

representations

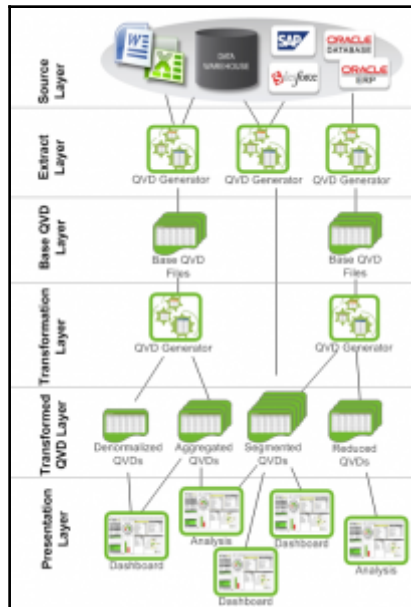
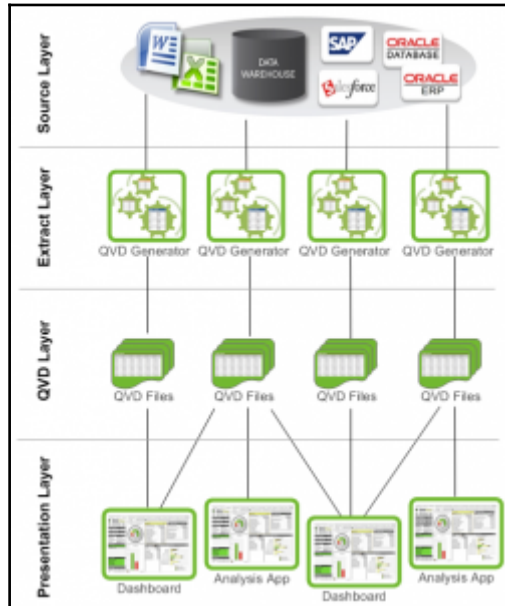
Compa

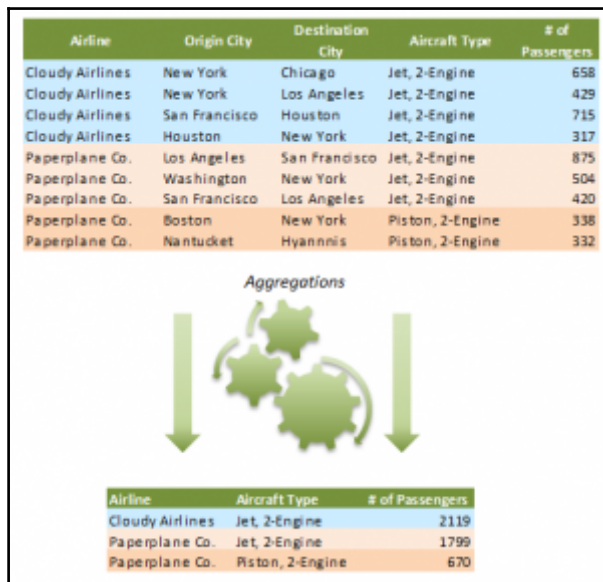
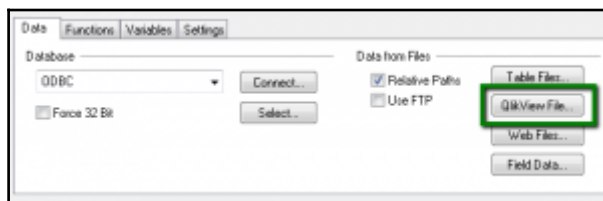
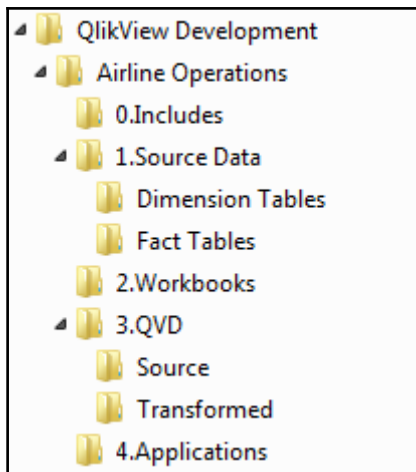
<default state>

Group A

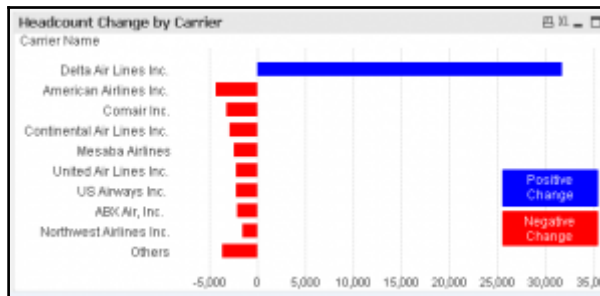
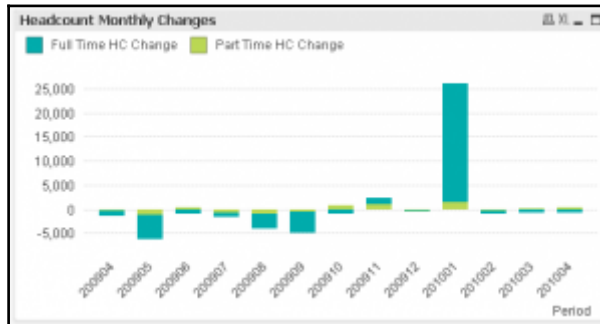
Group B

Chapter 13: Advanced Data Transformation





%Airline ID	Year	Month (M)	# Total Emplo...	# Delta Total E...	Period	Month
20385	2009	01	29884	8	200901	Jan
20385	2009	02	29138	-84	200902	Feb
20385	2009	03	29804	-54	200903	Mar
20385	2009	04	29849	-55	200904	Apr
20385	2009	05	30229	-284	200905	May
20385	2009	06	27253	3028	200906	Jun
20385	2009	07	28713	-979	200907	Jul
20385	2009	08	26576	-124	200908	Aug



Airline ID	Carrier Code	Carrier Name	Unique Carrier Code	Unique Carrier Entity	Unique Carrier Name	Carrier World Area	Carrier Group ID	Region Code	Start Date	End Date
20390	WI	Tradeworld Airlines	WI	8884 Tradeworld Airlines	WI	4	Domestic		01/20/98	11/12/98
20390	WI	Tradeworld Airlines	WI	8884 Tradeworld Airlines	WI	4	International		01/20/98	11/12/98
20390	WI	Tradeworld Airlines	WI	8884 Tradeworld Airlines	WI	1	Domestic		01/26/98	11/12/98
20390	WI	Tradeworld Airlines	WI	8884 Tradeworld Airlines	WI	1	International		01/26/98	11/12/98
20390	WI	Tradeworld Airlines	WI	8884 Tradeworld Airlines	WI	4	Domestic		01/26/01	11/12/01
20390	WI	Tradeworld Airlines	WI	8884 Tradeworld Airlines	WI	4	International		01/26/01	11/12/01
20390	WI	Tradeworld Airlines	WI	8884 Tradeworld Airlines	WI	1	Domestic		01/26/02	
20390	WI	Tradeworld Airlines	WI	8884 Tradeworld Airlines	WI	1	International		01/26/02	

Start	End
1	8
2	9
6	15
8	20
9	
10	

Start	End
1	8

Element
1
2
3
4
5
6
7
8
9
10
11
12
13
14
15
16
17
18
19
20

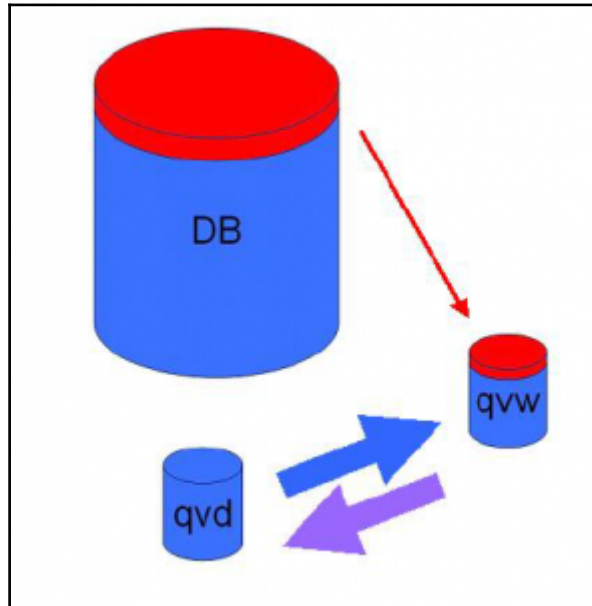
Start	End
1	8
2	9
6	15
8	20
9	
10	

Start	End
2	15
8	15
9	20
10	15

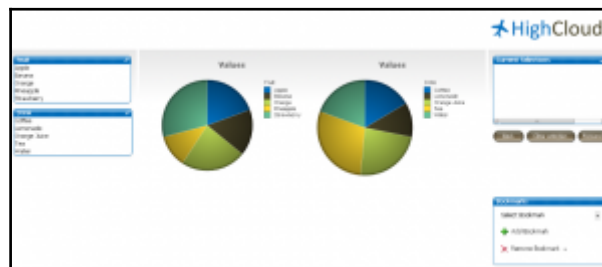
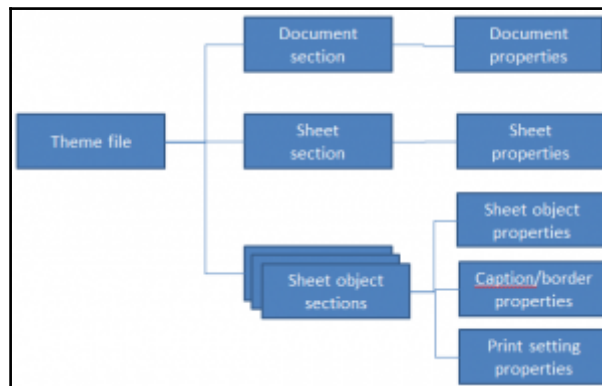
Element
1
2
3
4
5
6
7
8
9
10
11
12
13
14
15
16
17
18
19
20

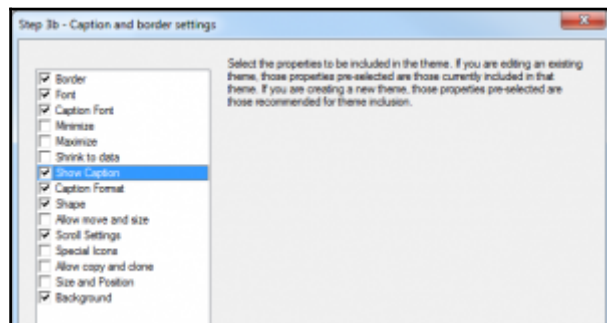
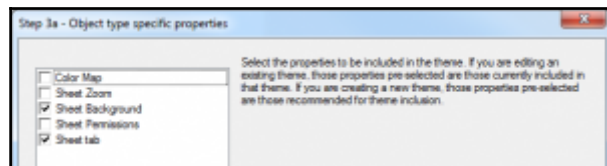
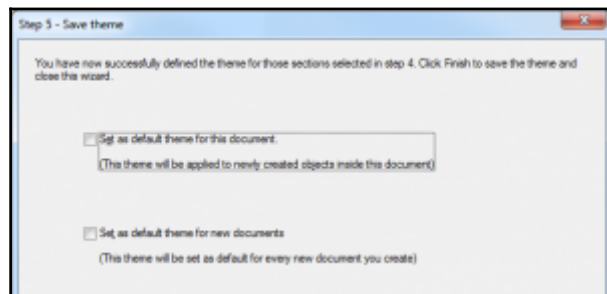
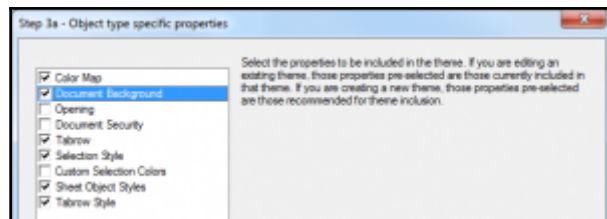
Start	End	Element
1	8	1
1	8	2
1	8	3
1	8	4
1	8	5
1	8	6
1	8	7
1	8	8
2	15	2

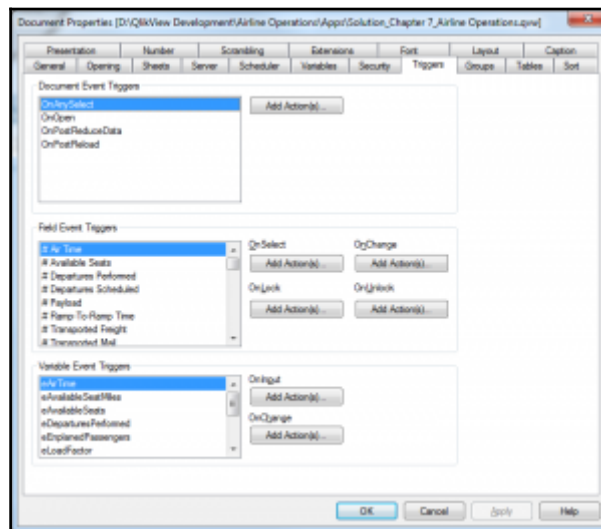
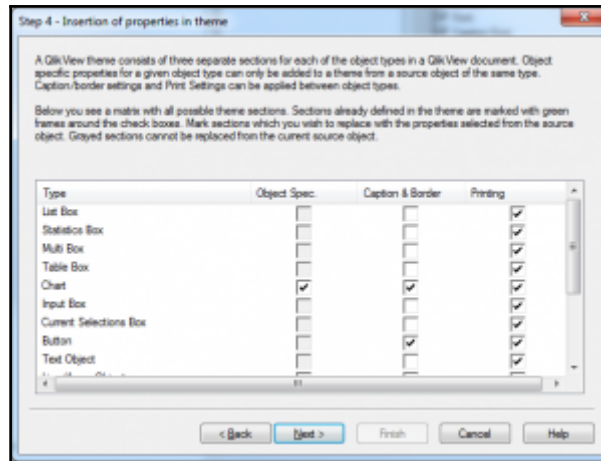
Airline ID	Carrier Code	Carrier Name	Unique Carrier Code	Unique Carrier Entity	Unique Carrier Name	Carrier World Area Code	Carrier Group ID	Region Code	Start Date
20130	WI	Tradevins Int			8084 Tradevins Airlines	18	4	Domestic	1-Feb-1990
20130	WI	Tradevins Int			8084 Tradevins Airlines	18	1	Domestic	1-Jan-2000
20130	WI	Tradevins Int			8084 Tradevins Airlines	18	4	Domestic	1-Mar-2011
20130	WI	Tradevins Int			8084 Tradevins Airlines	18	1	Domestic	1-Mar-2012
20130	WI	Tradevins Int			16084 Tradevins Airlines	18	4	International	1-Feb-1998
20130	WI	Tradevins Int			16084 Tradevins Airlines	18	1	International	1-Jan-2000
20130	WI	Tradevins Int			16084 Tradevins Airlines	18	4	International	1-Jan-2011
20130	WI	Tradevins Int			16084 Tradevins Airlines	18	1	International	1-Jan-2012

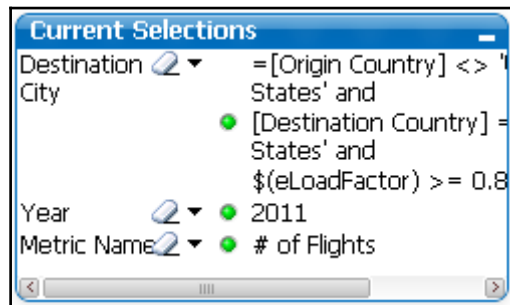
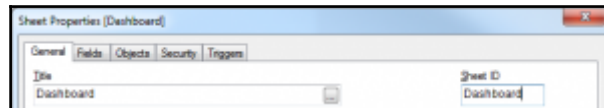
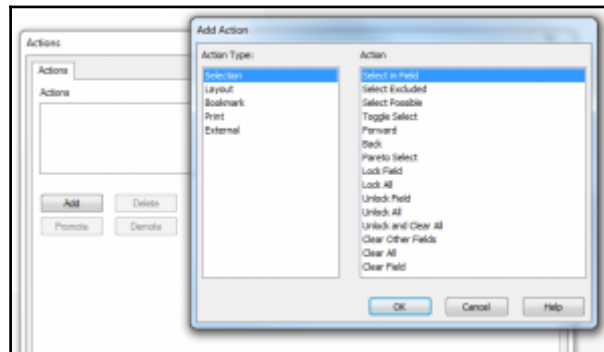
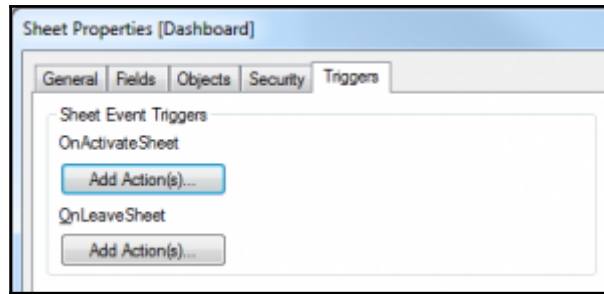


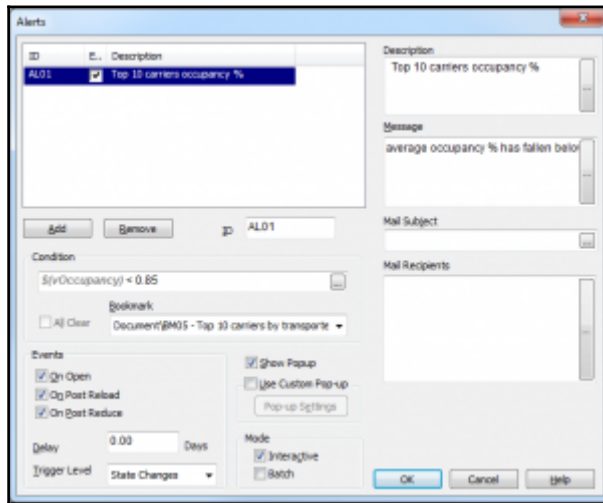
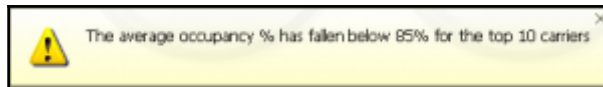
Chapter 14: More on Visual Design and User Experience











Chapter 15: Security

