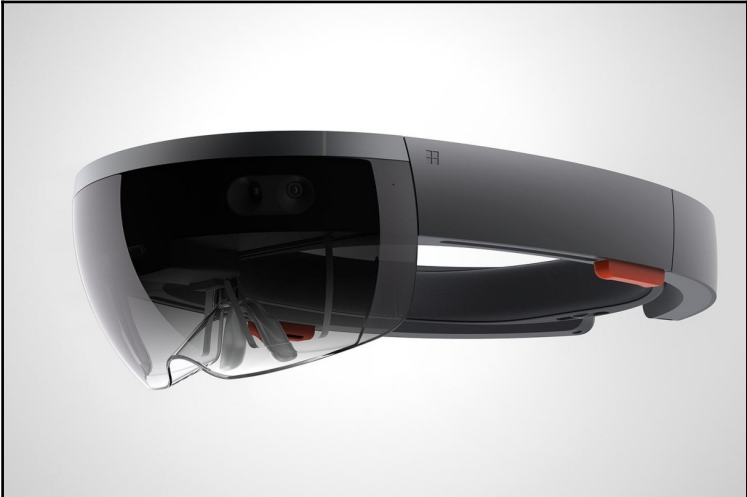
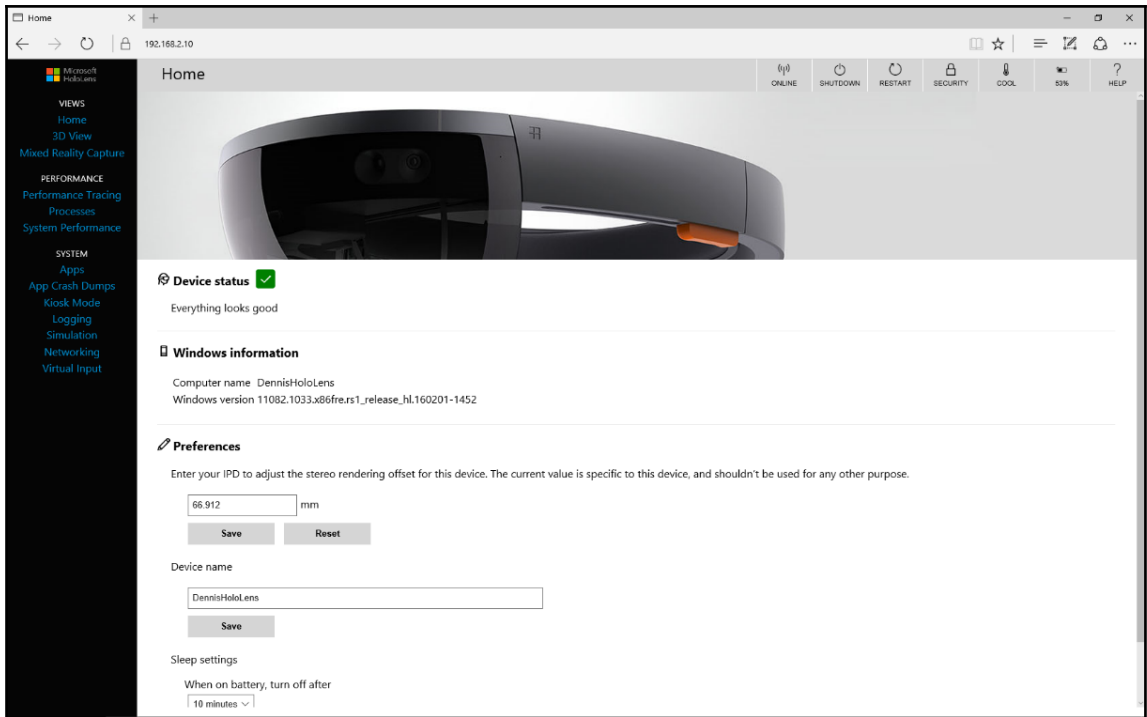
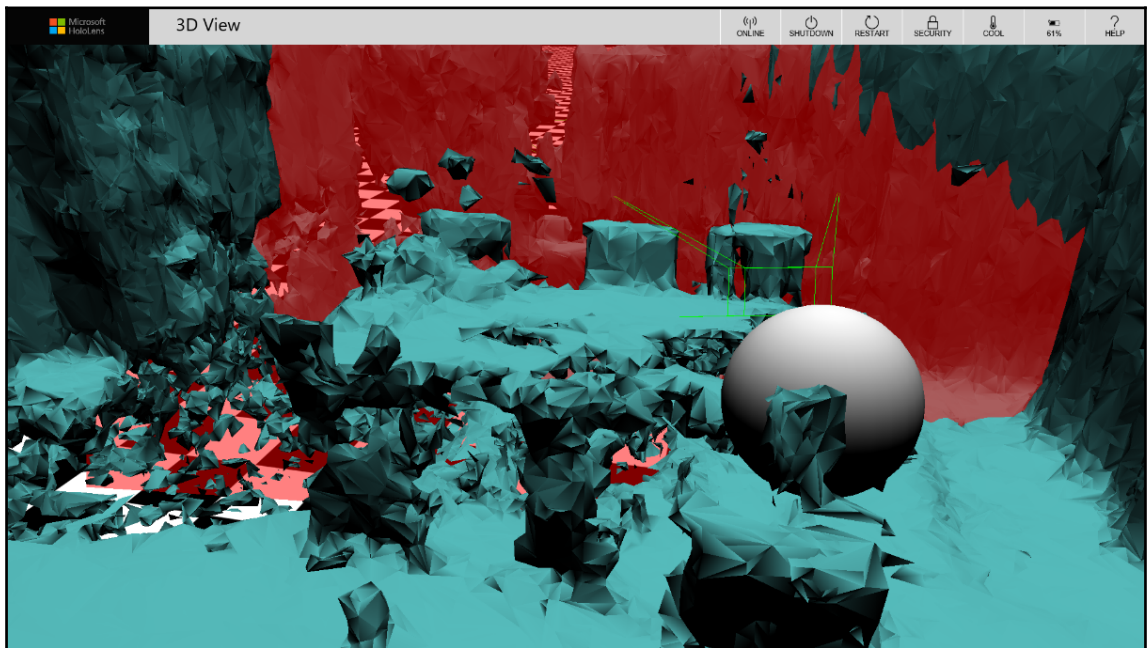
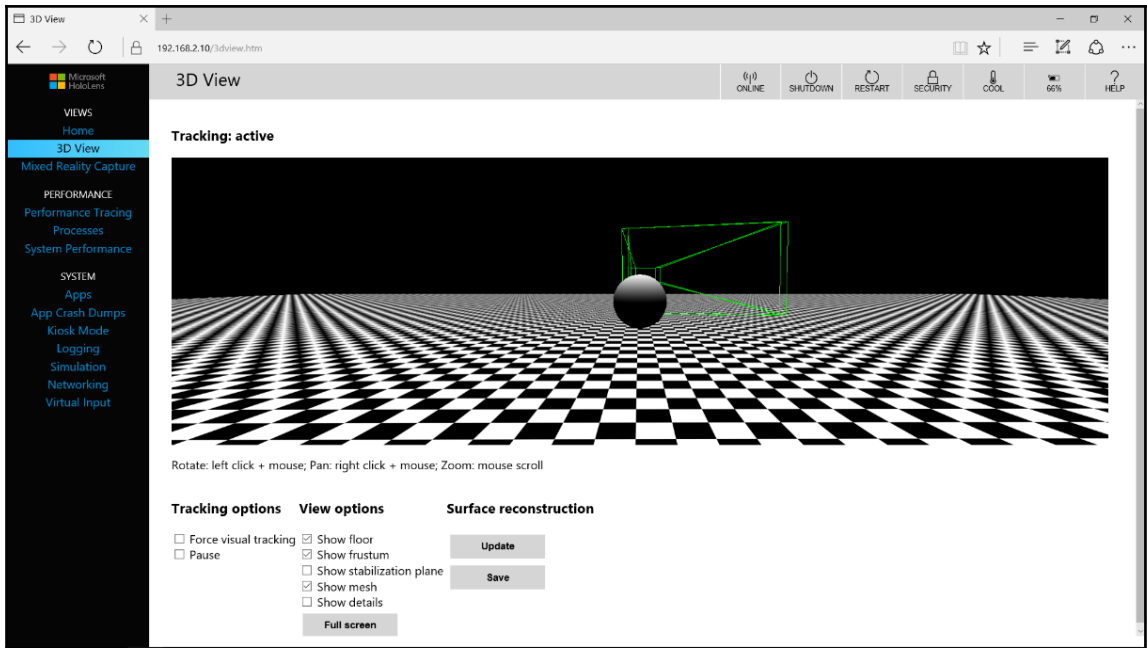


Chapter 1: Let's Begin!







Details

Hands

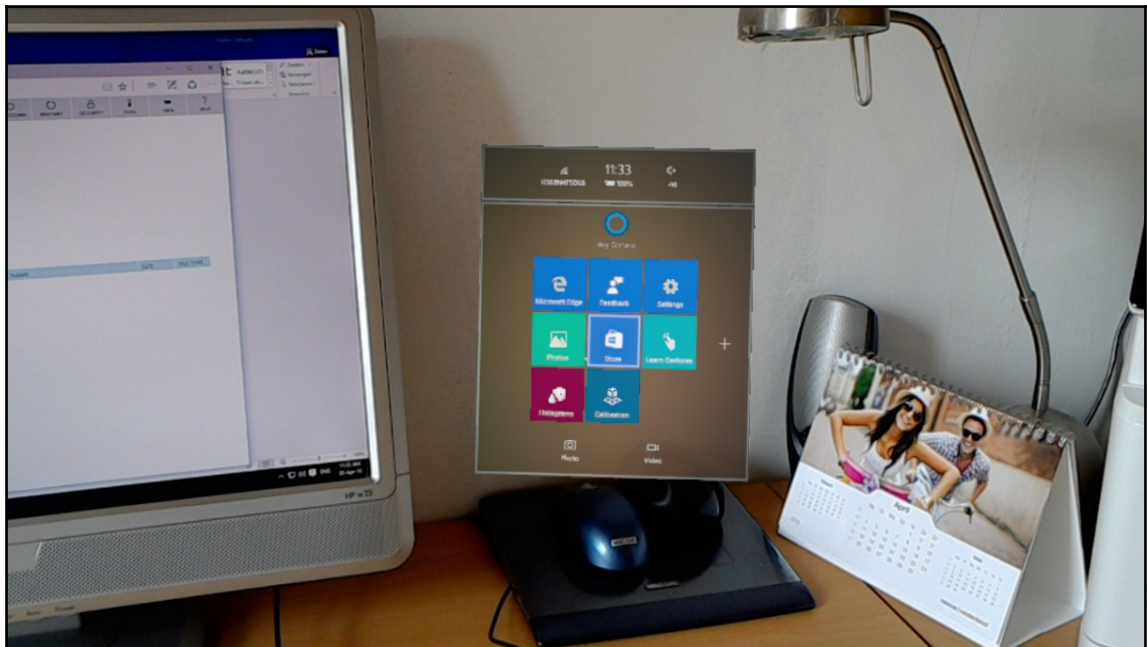
ID	X	Y	Z	ISPRESSED
895	-0.191912	0.096869	-0.252249	false
670	0.134939	-0.098979	-0.483796	false

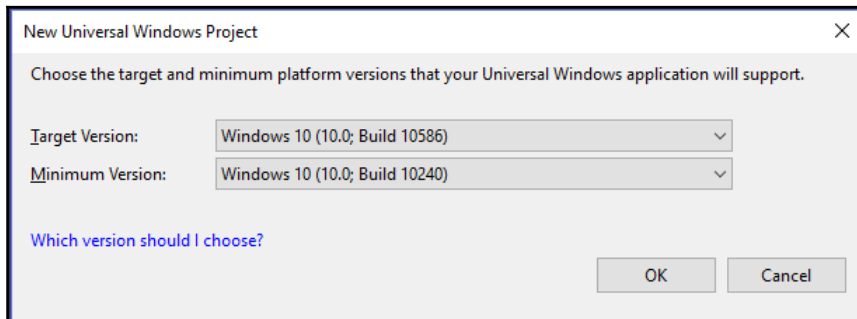
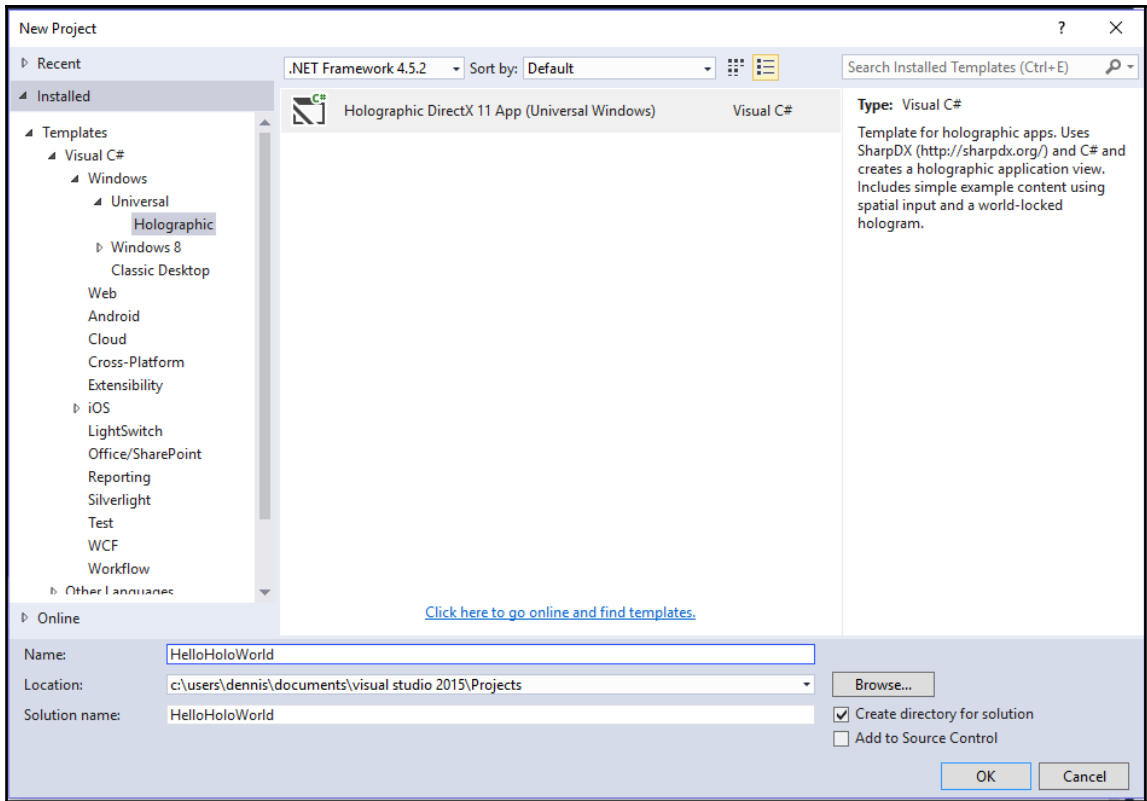
Head Rotation Quaternion

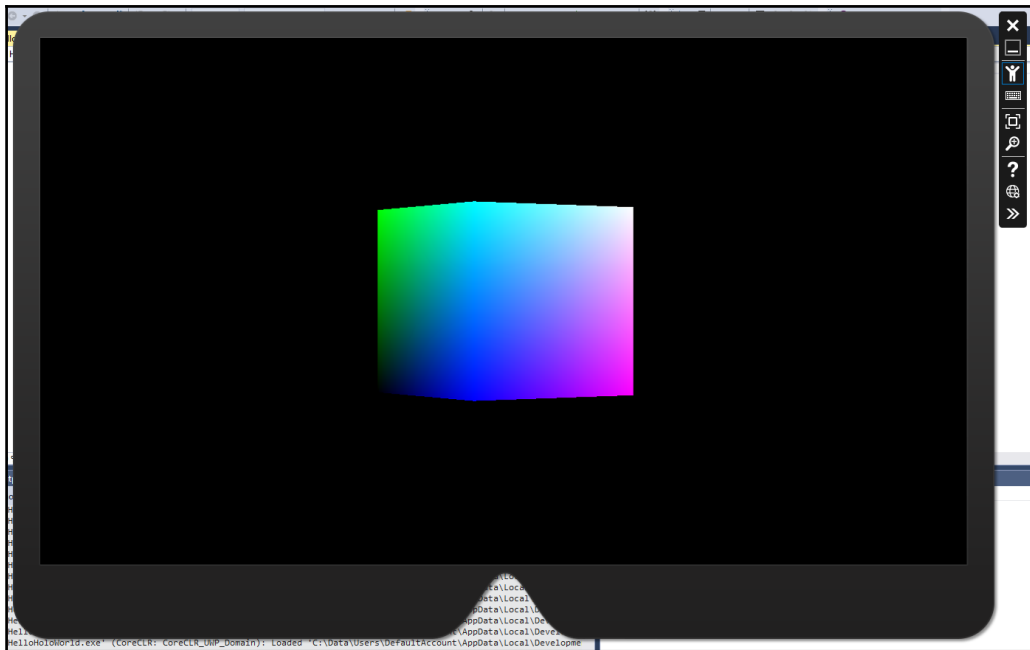
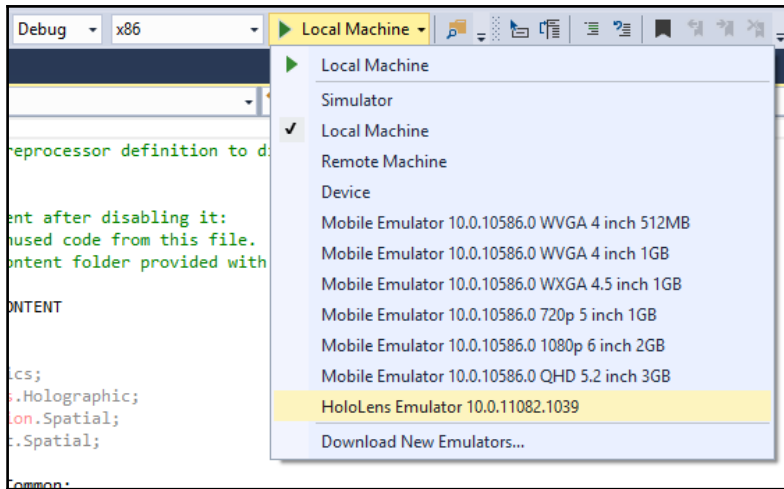
CONST	I	J	K
0.991173	0.112653	0.004208	-0.069765

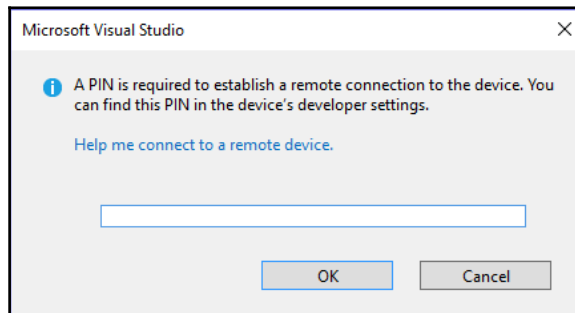
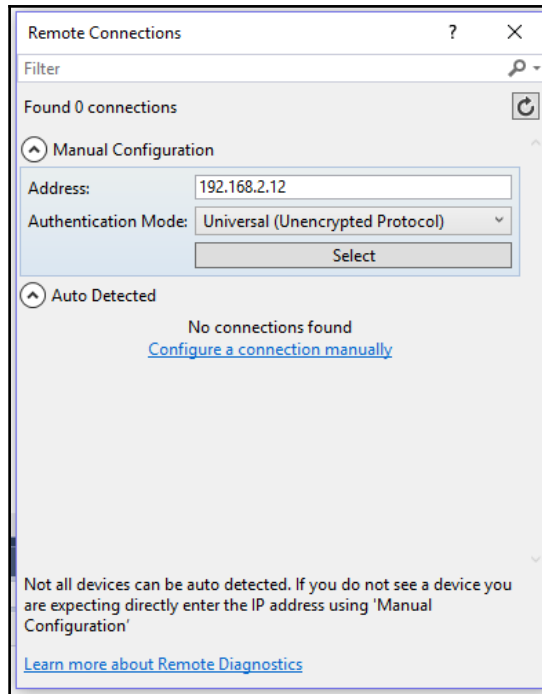
Origin Translation Vector

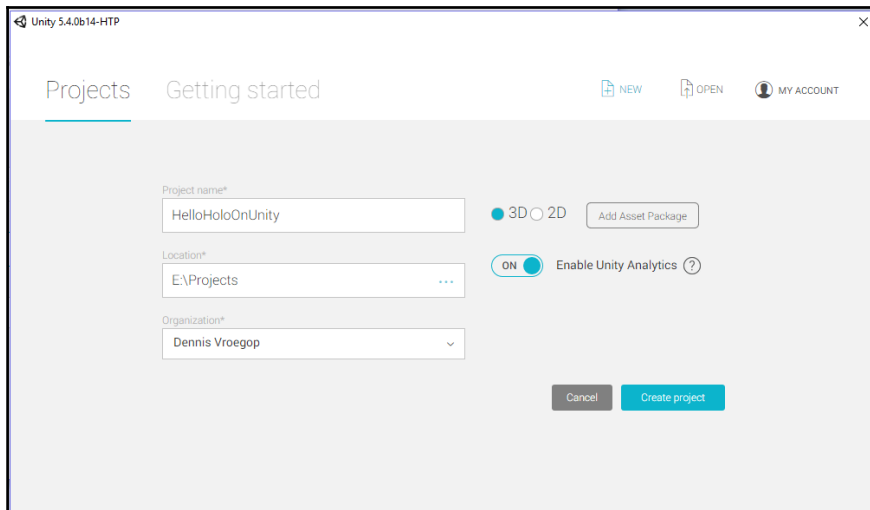
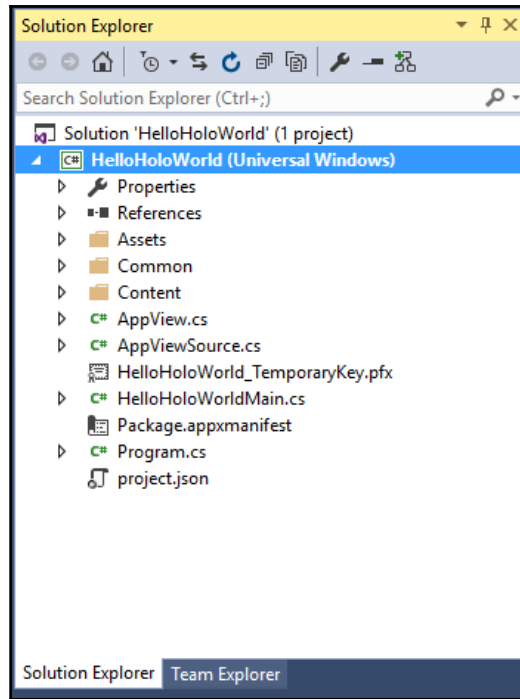
X	Y	Z
-0.030576	0.002437	-0.212598

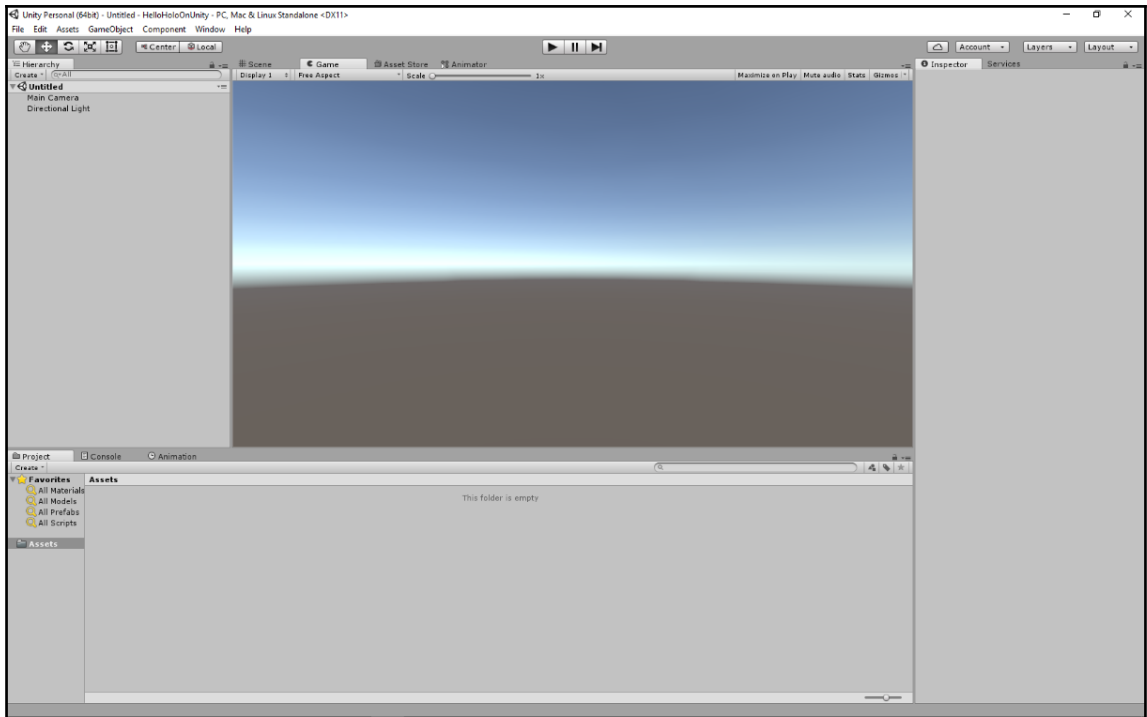


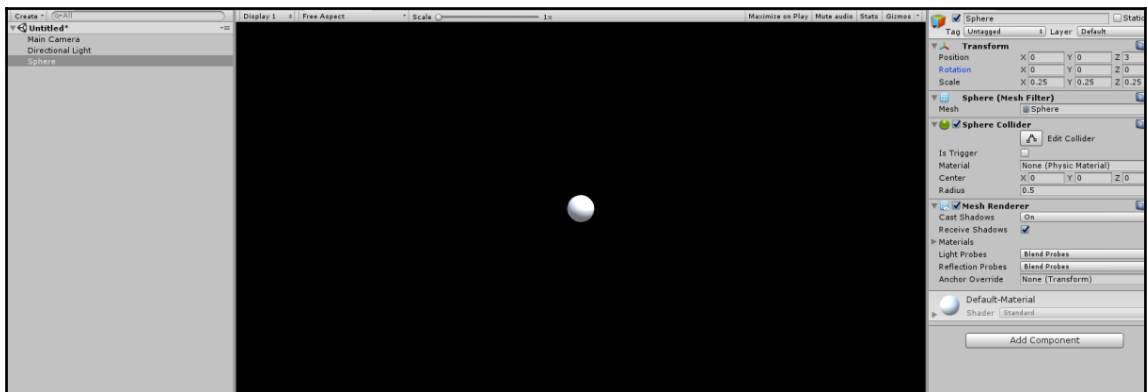


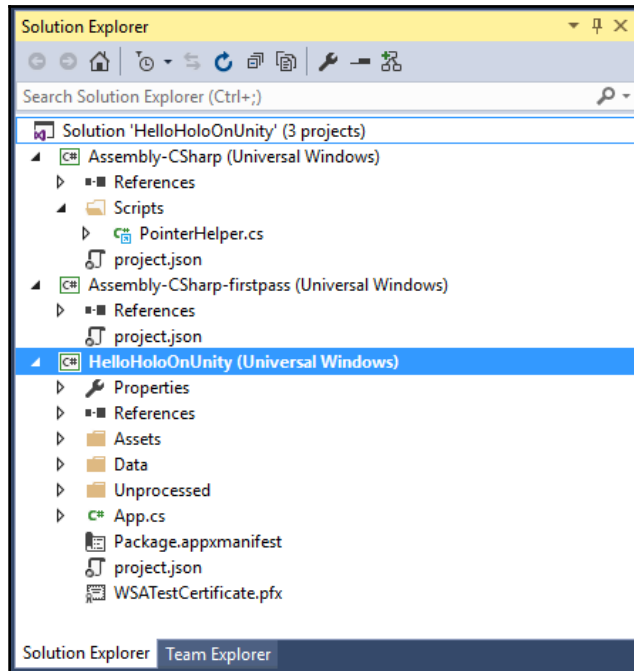
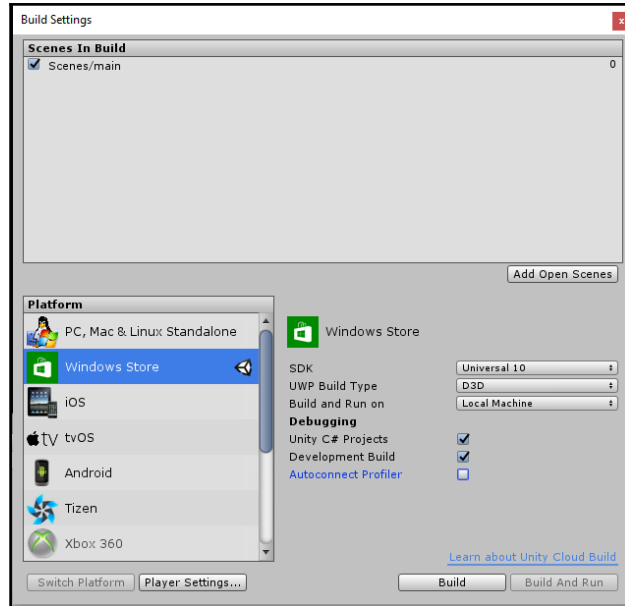




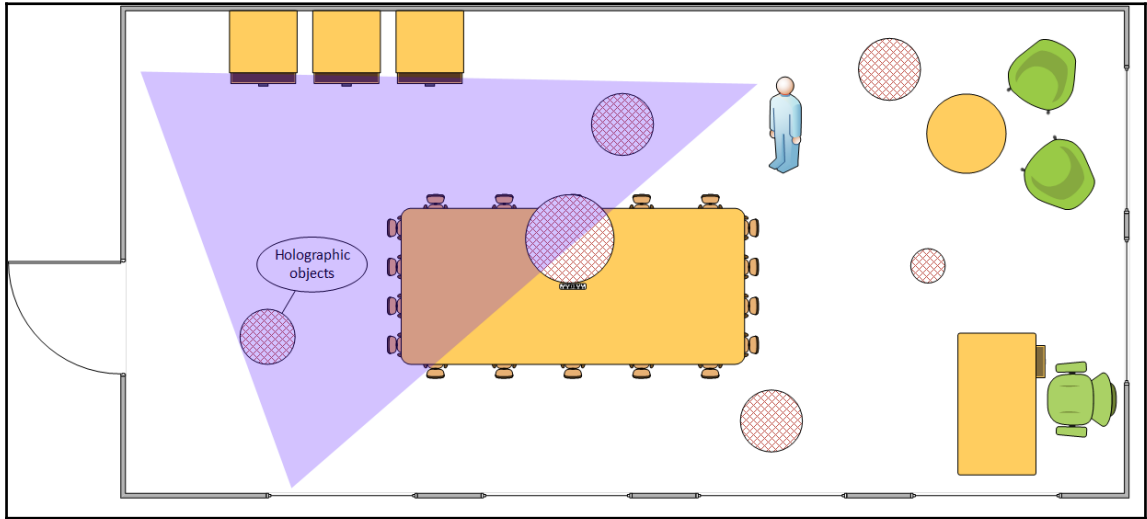


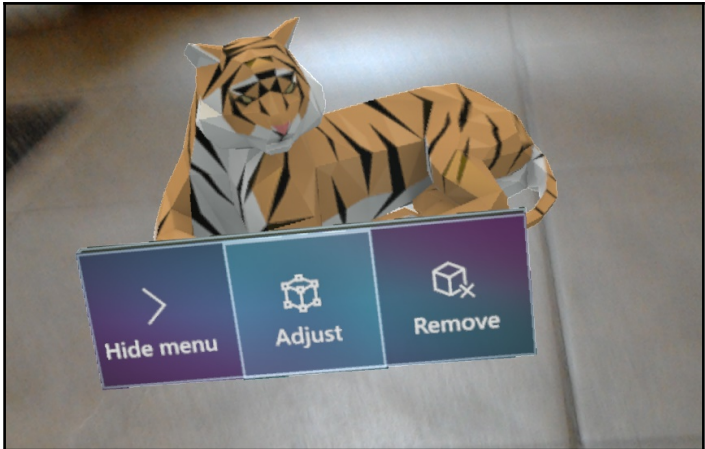


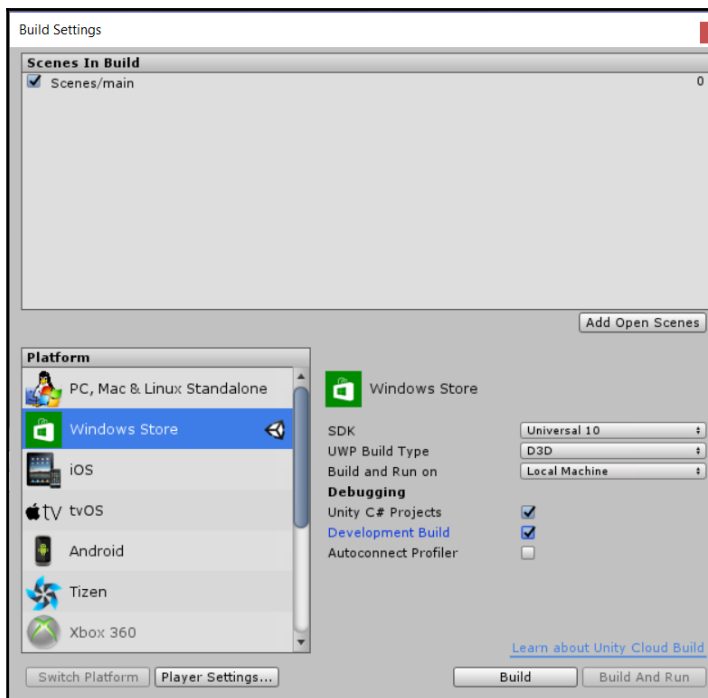
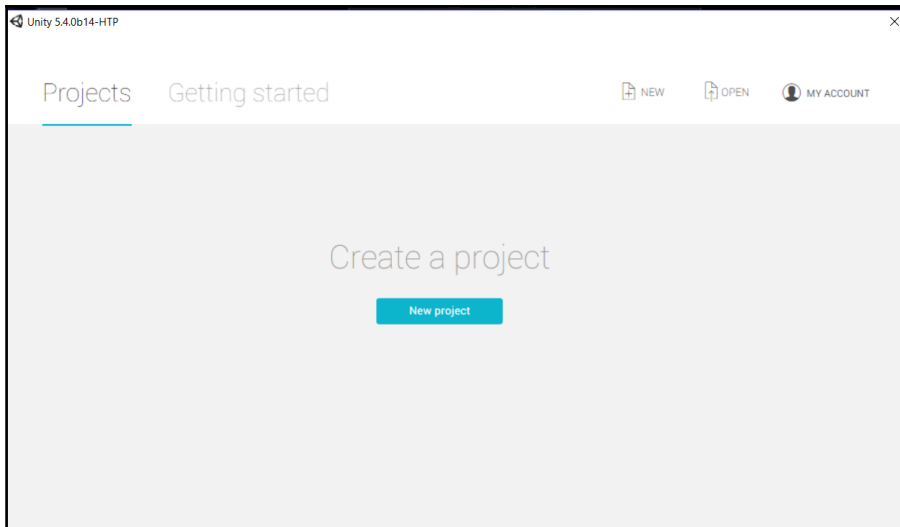


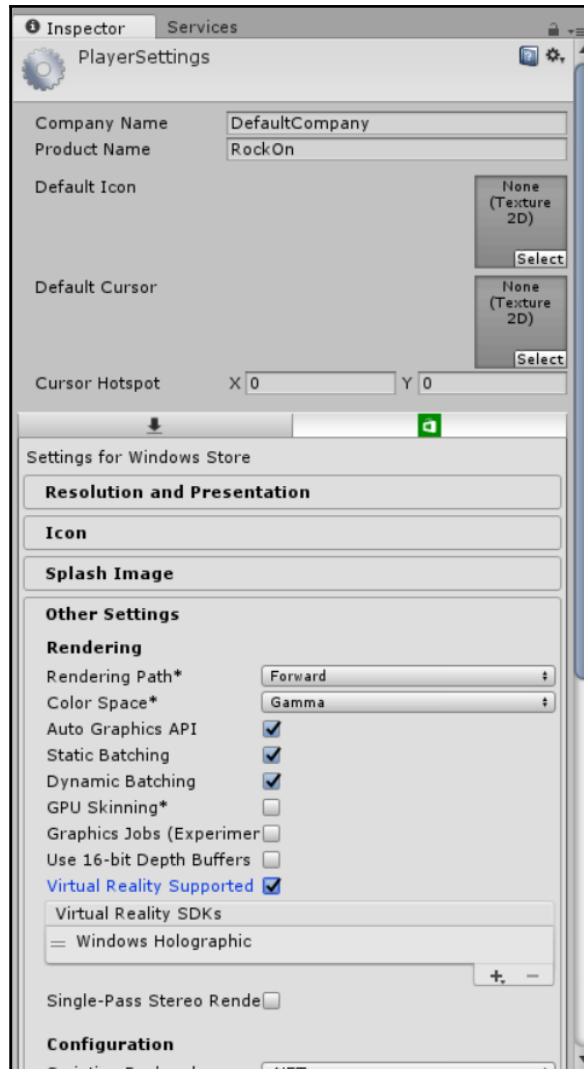


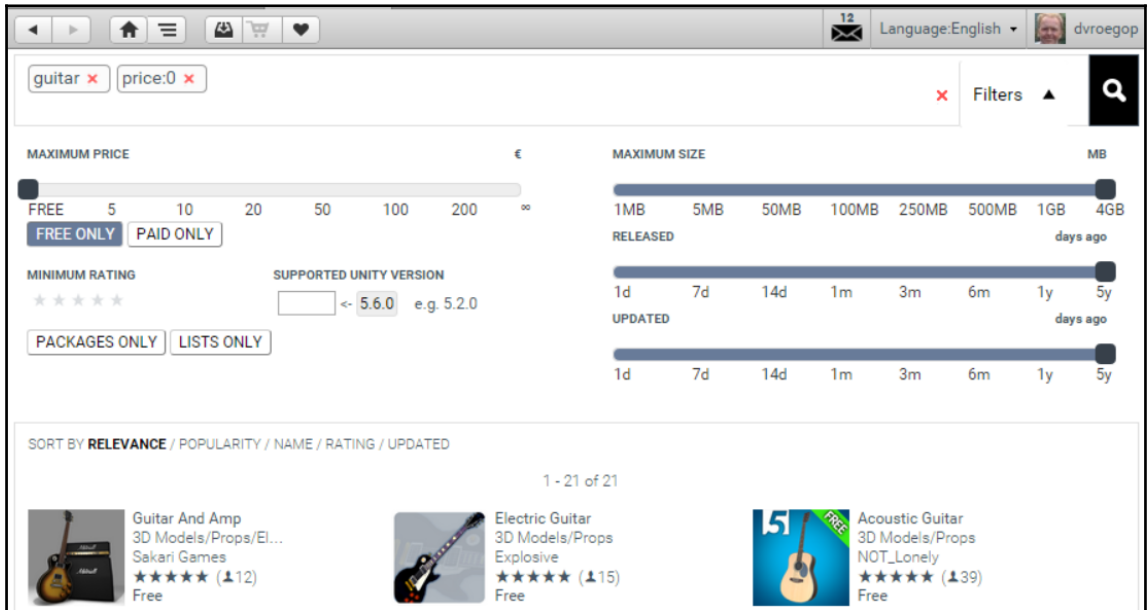
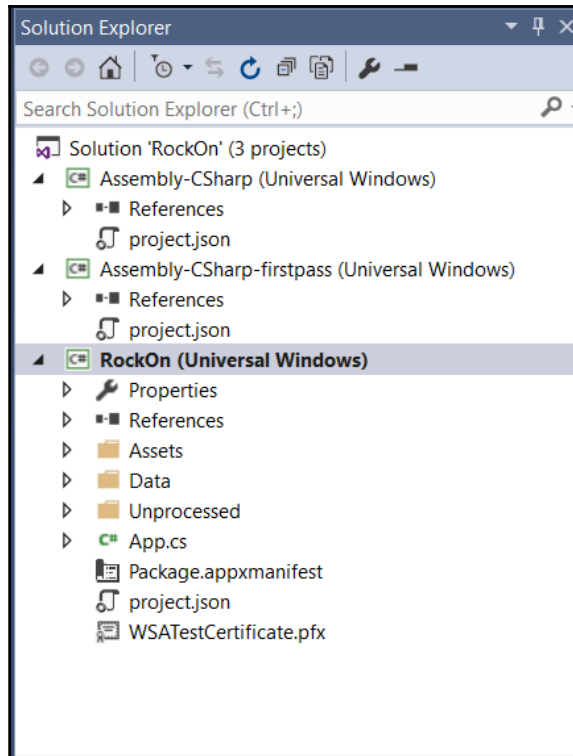
Chapter 2: Designing Your App

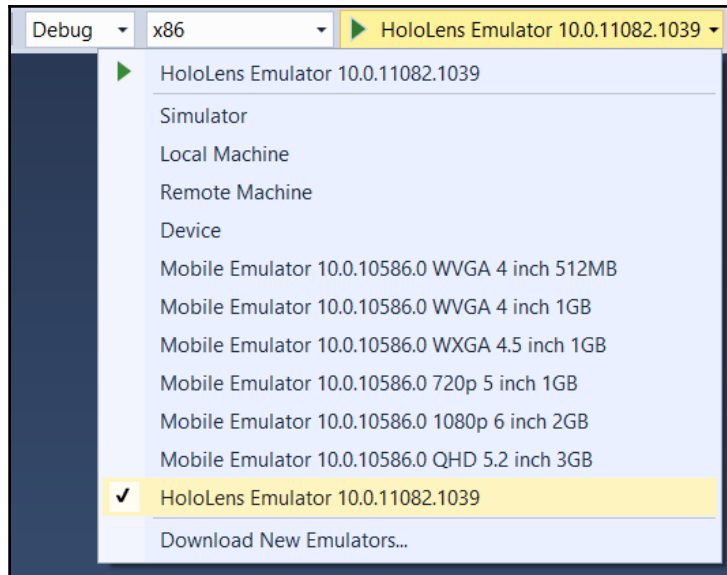




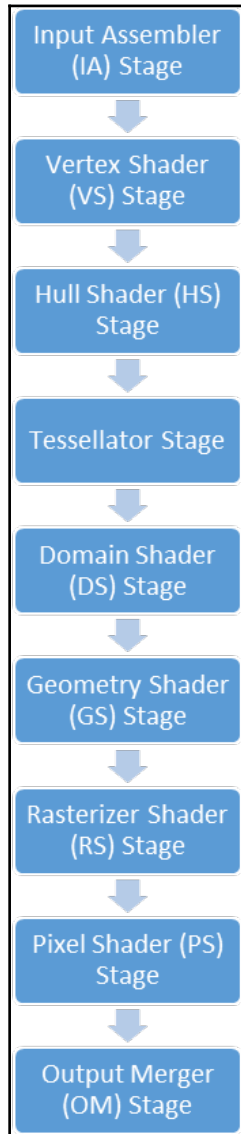


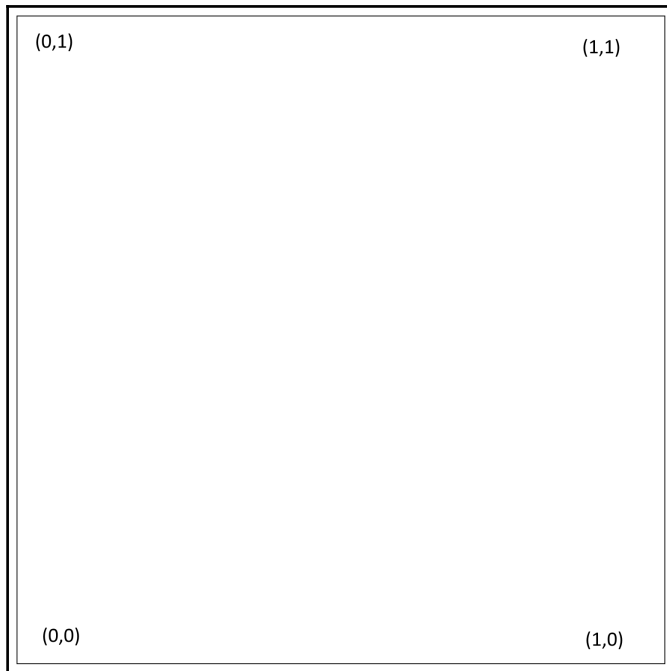
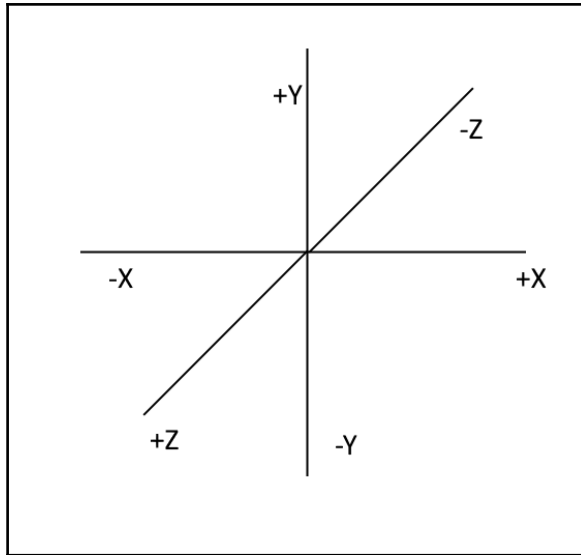


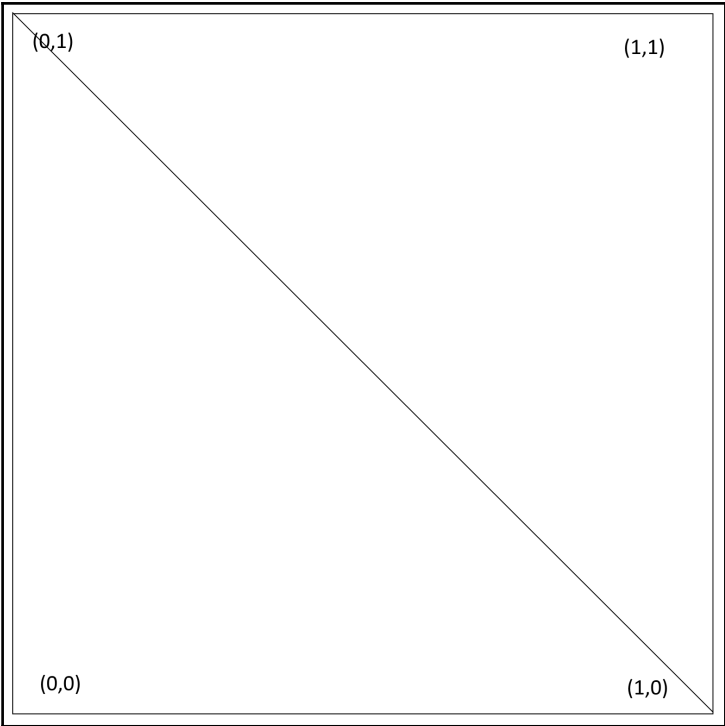


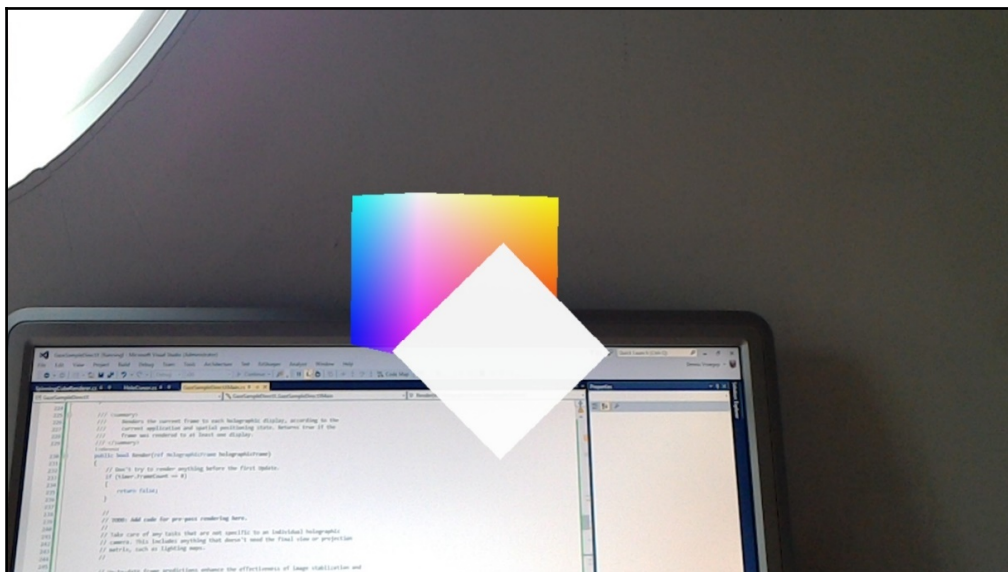
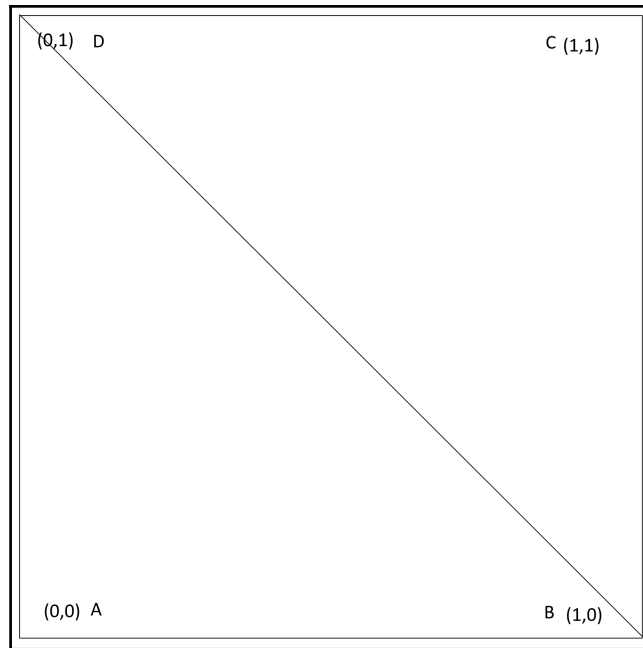


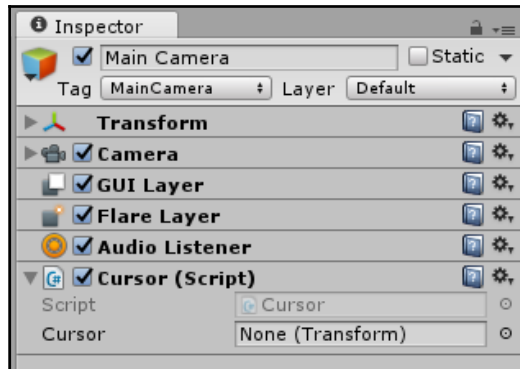
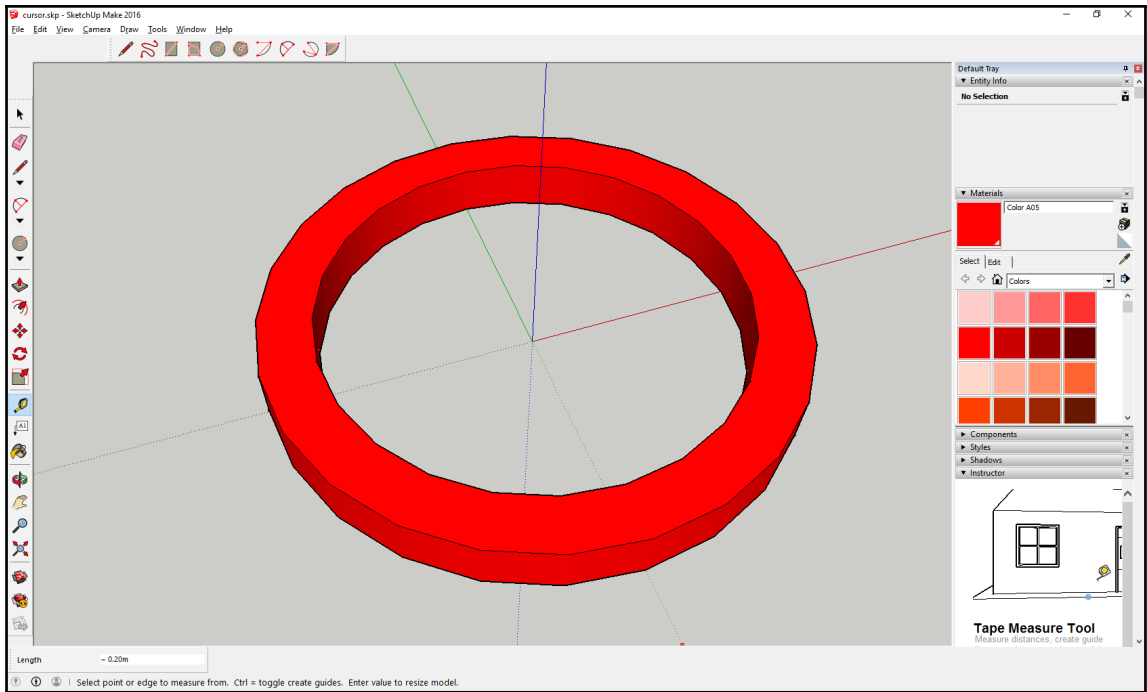
Chapter 3: Gestures and Events

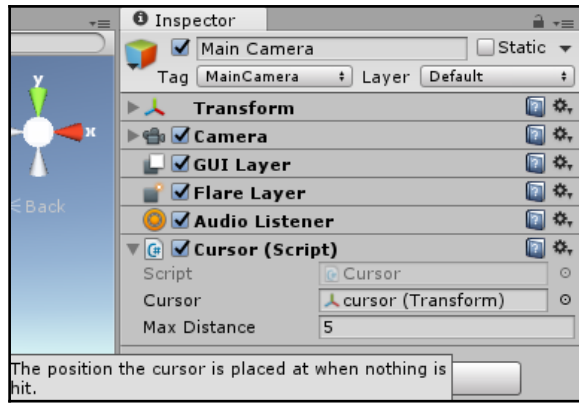


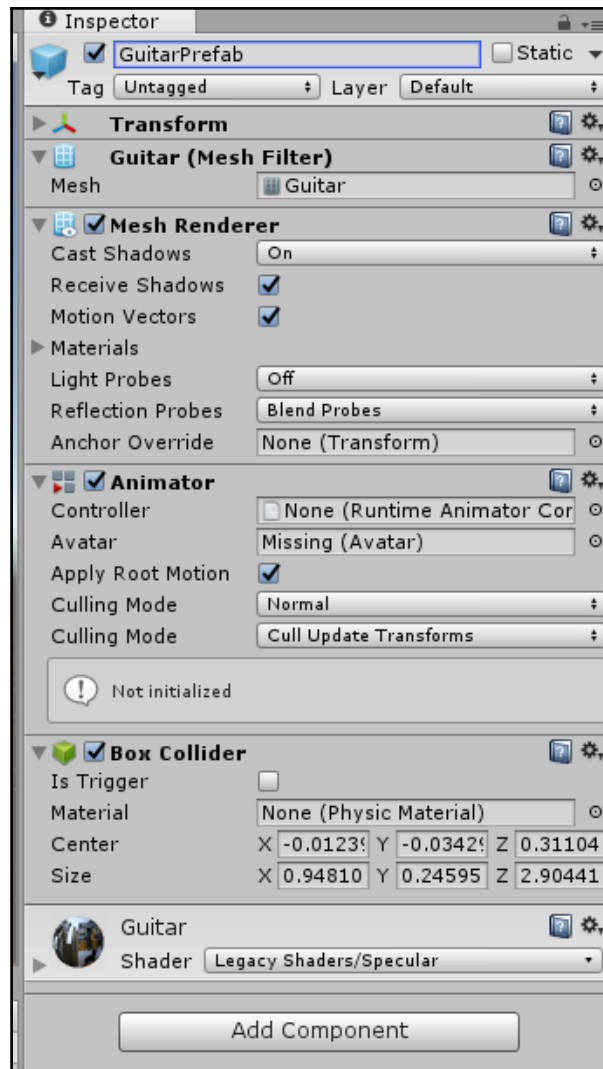


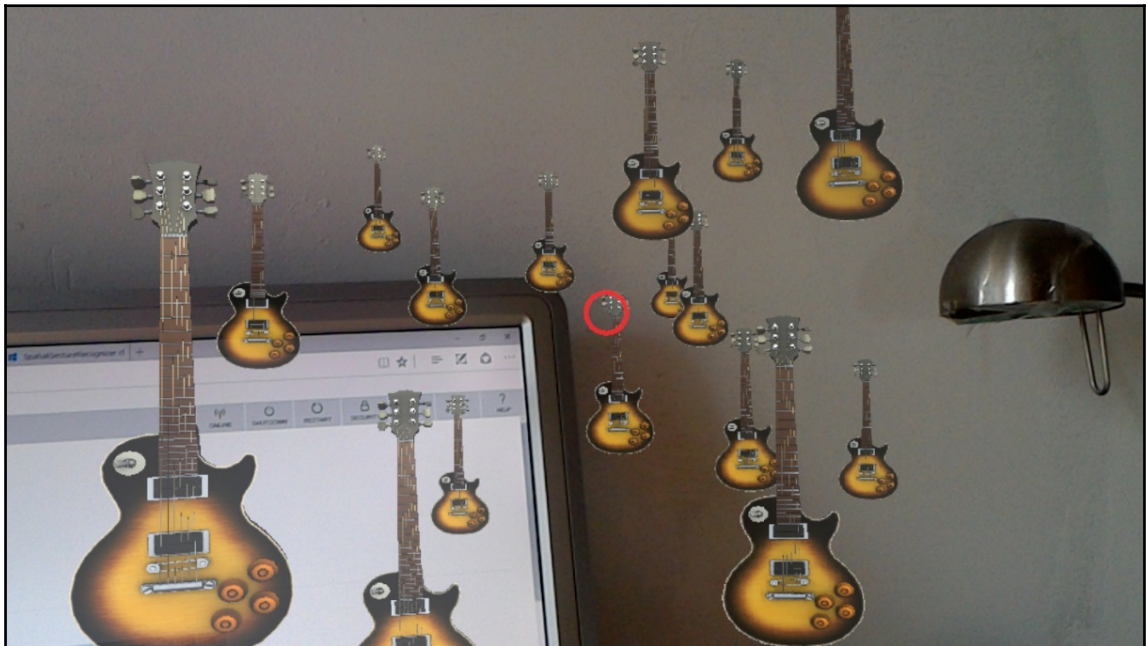
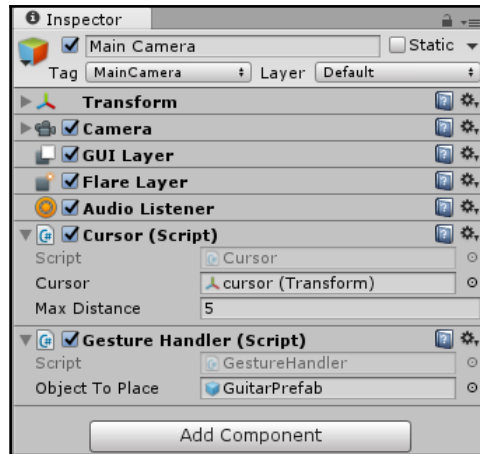




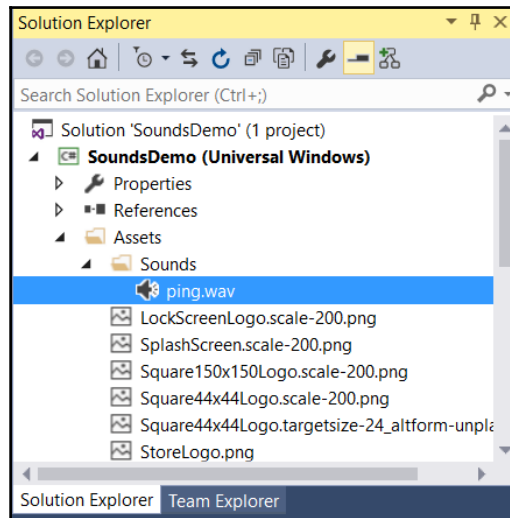
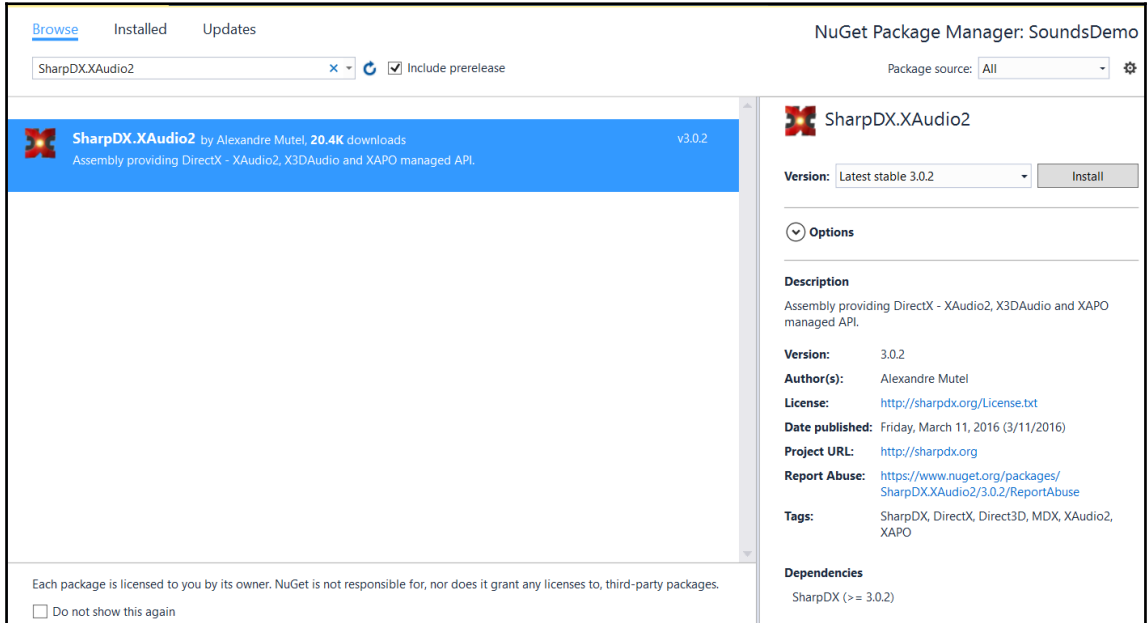


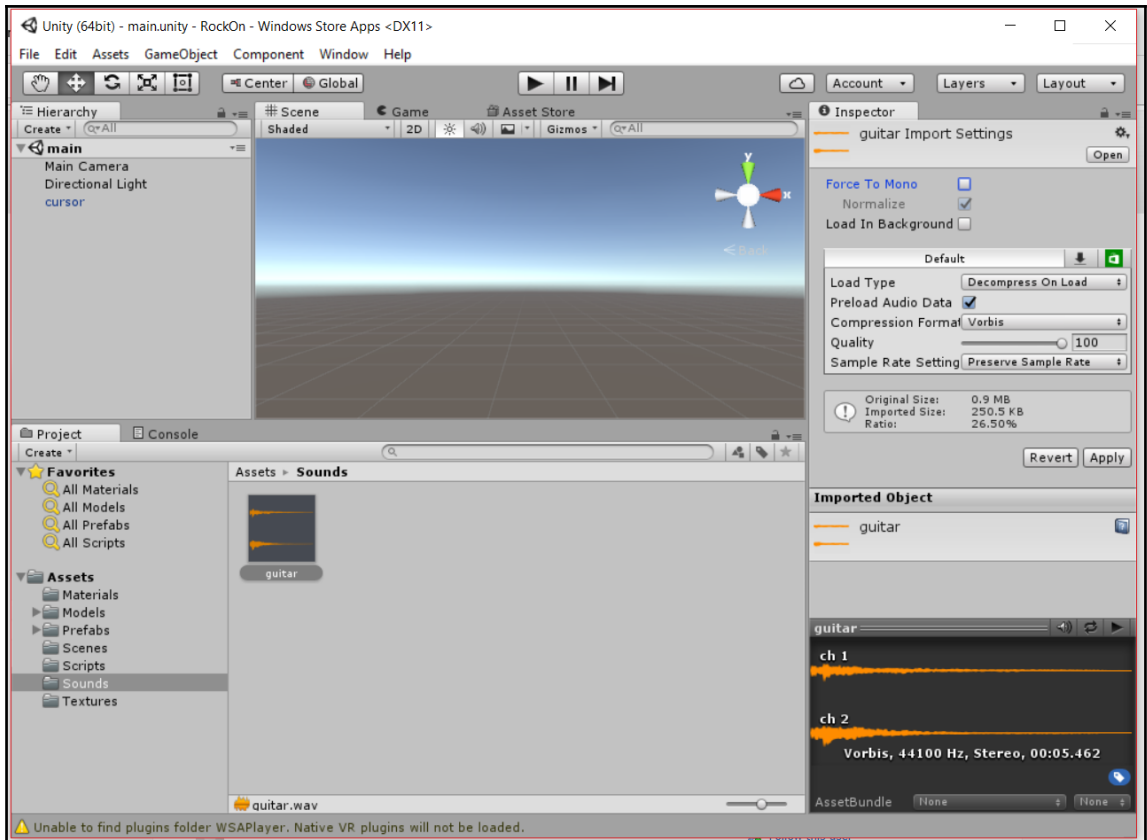


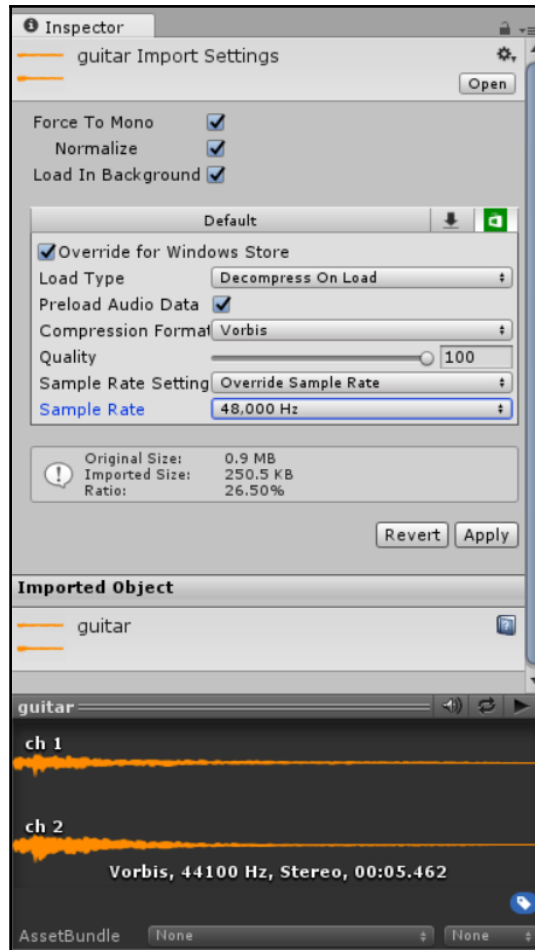


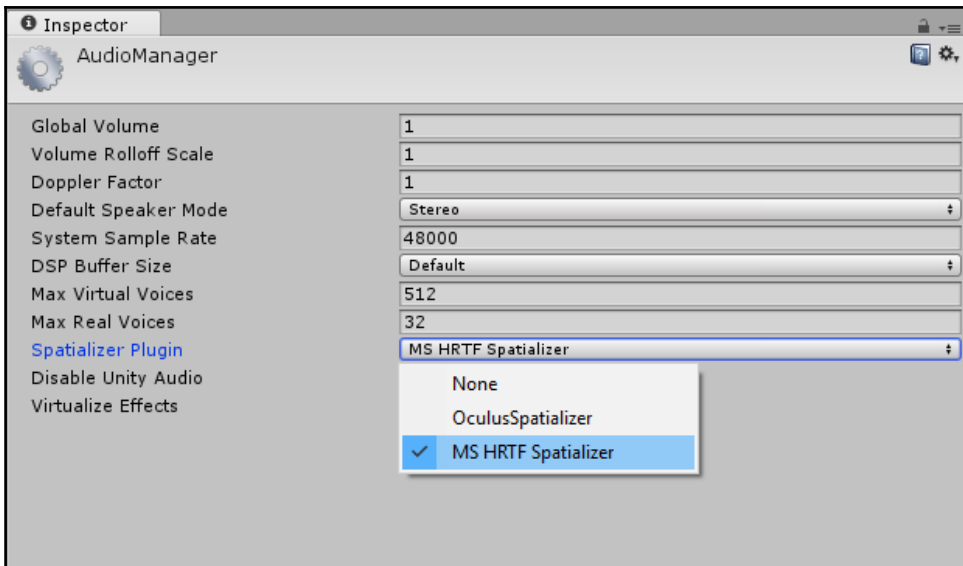
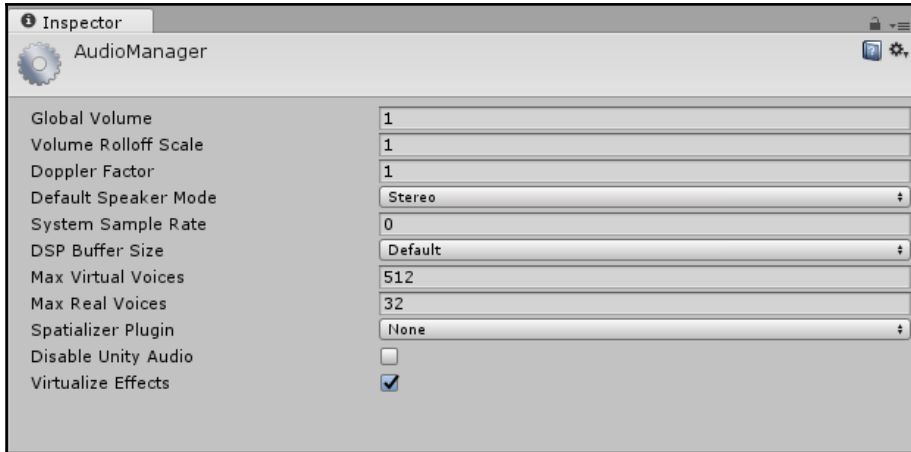


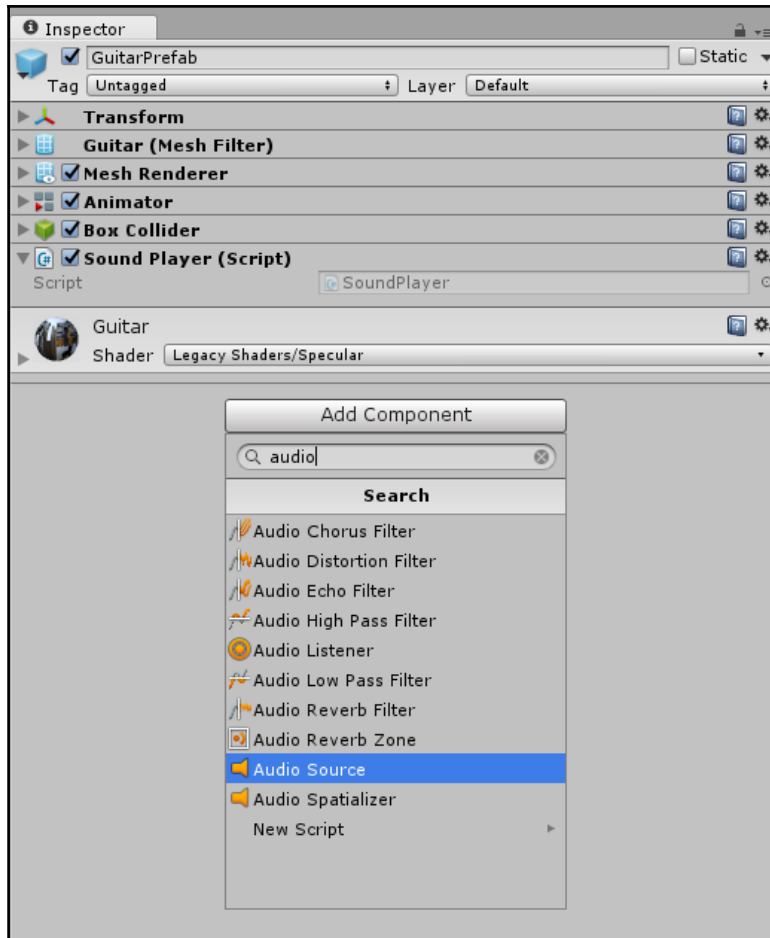
Chapter 4: Make Some Noise - Sounds

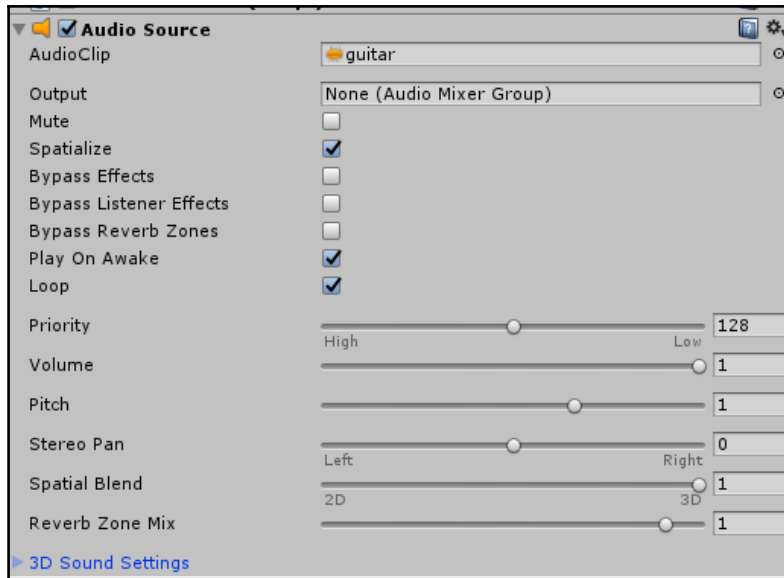


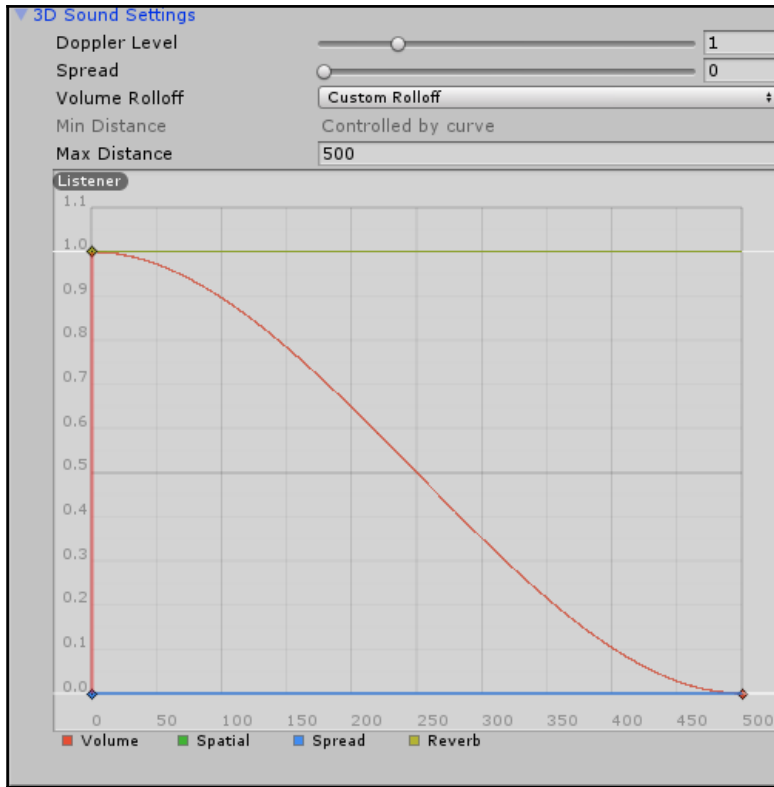




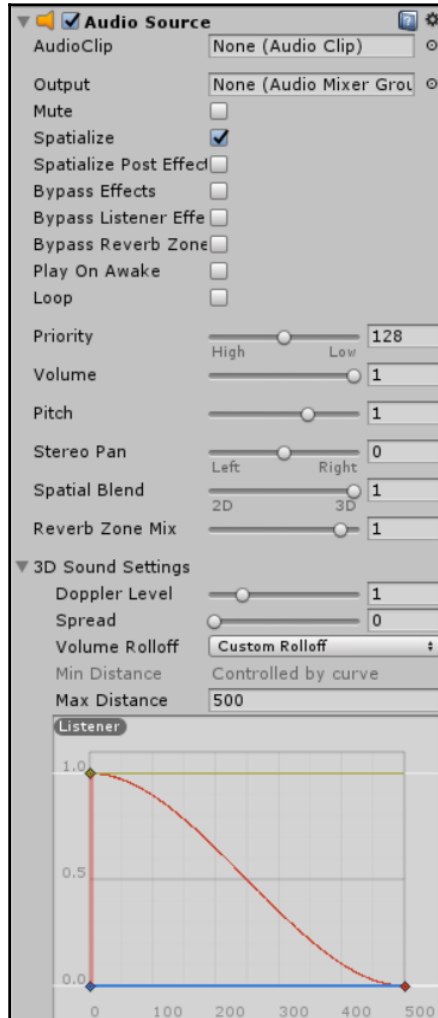


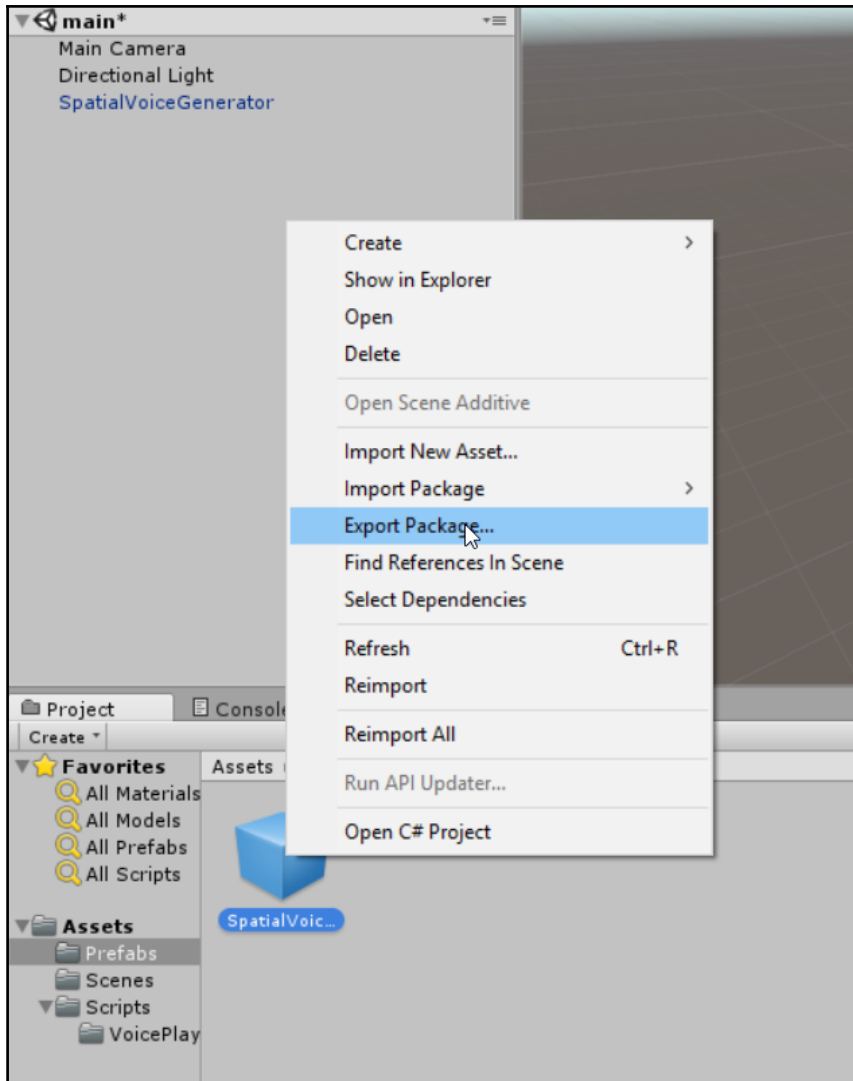


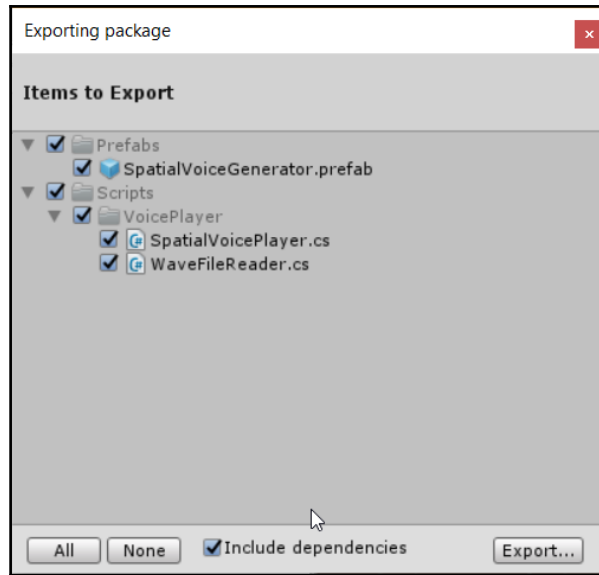


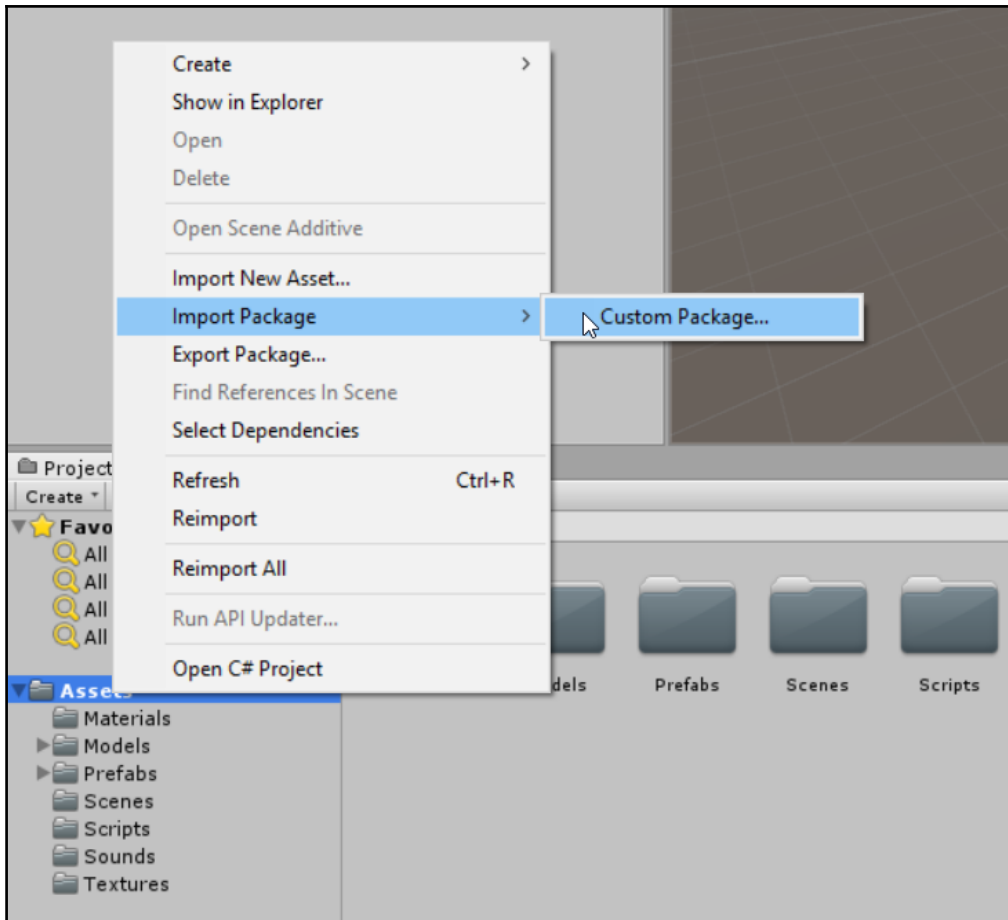


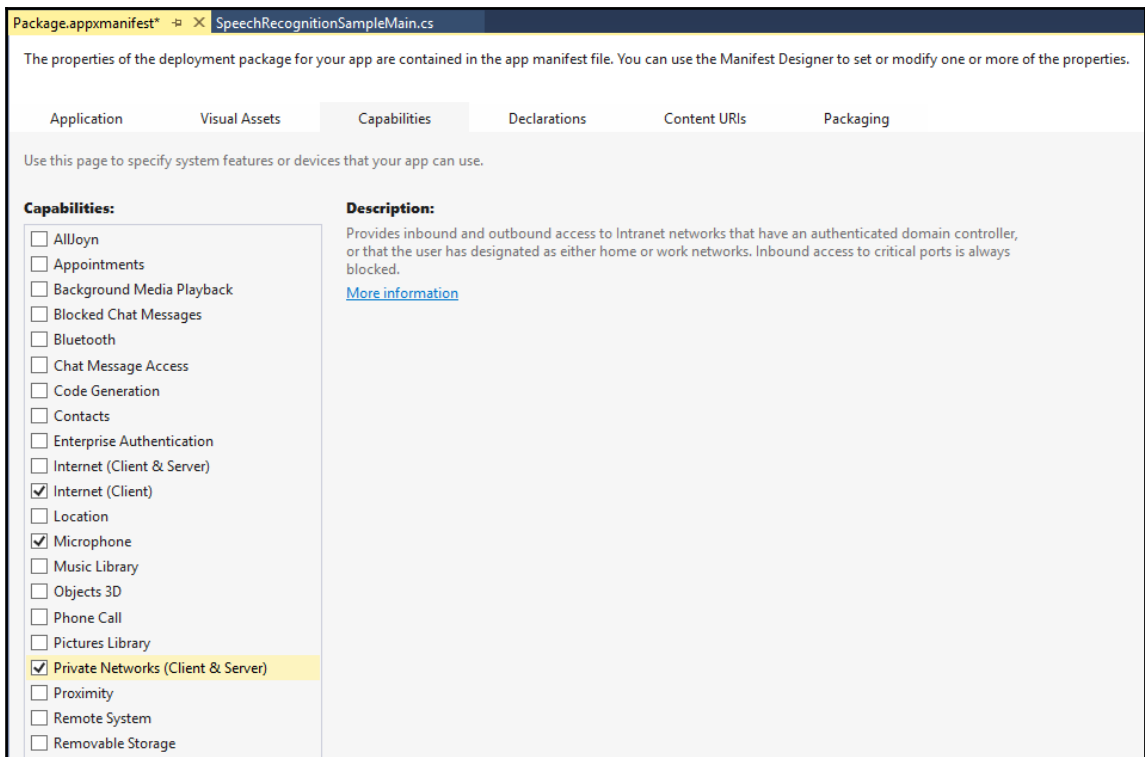
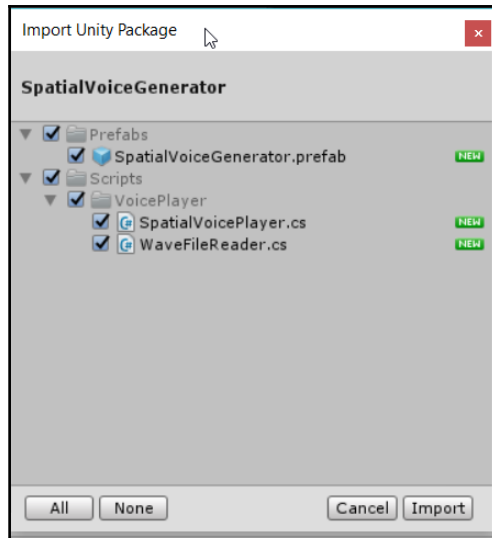
Chapter 5: Be Heard - Voice Interactions



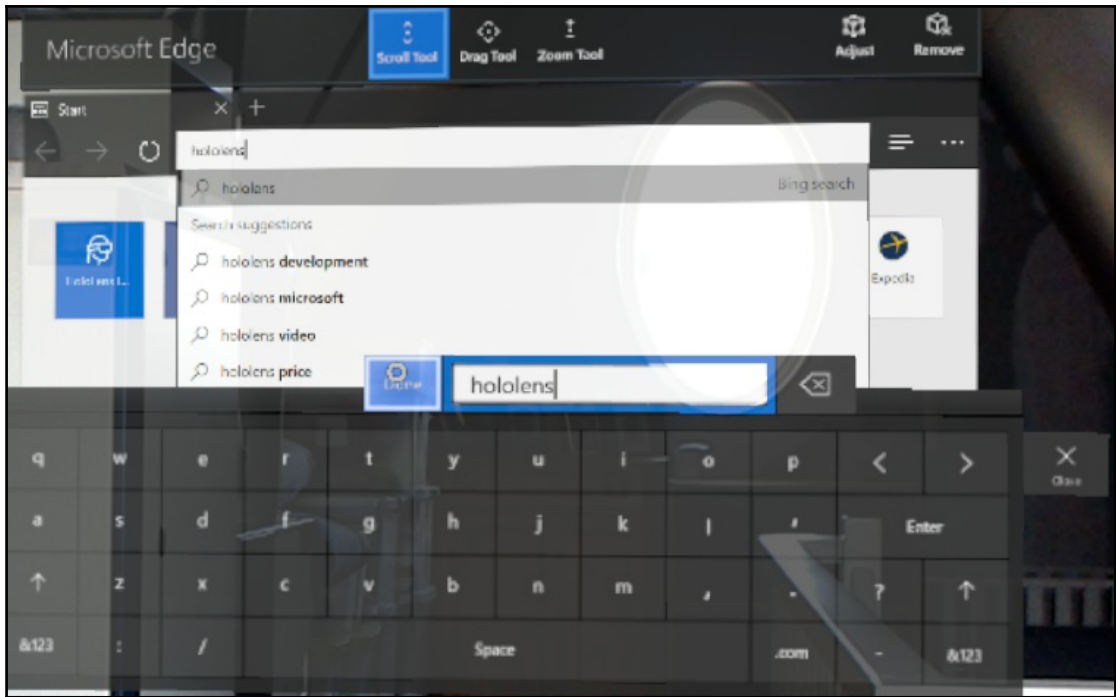






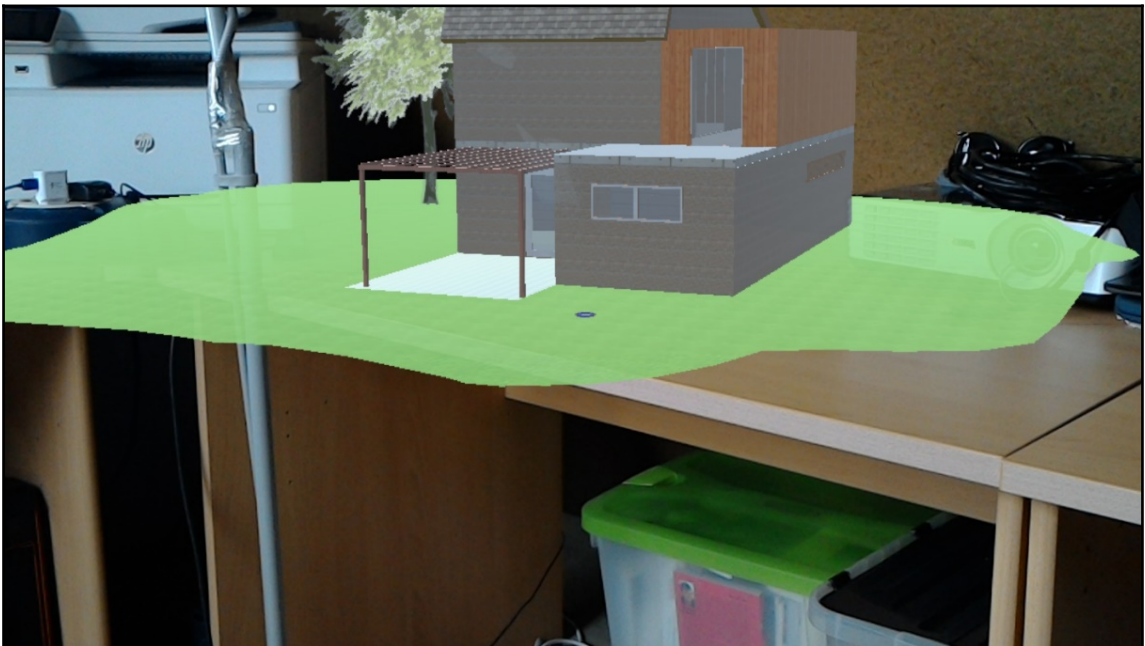
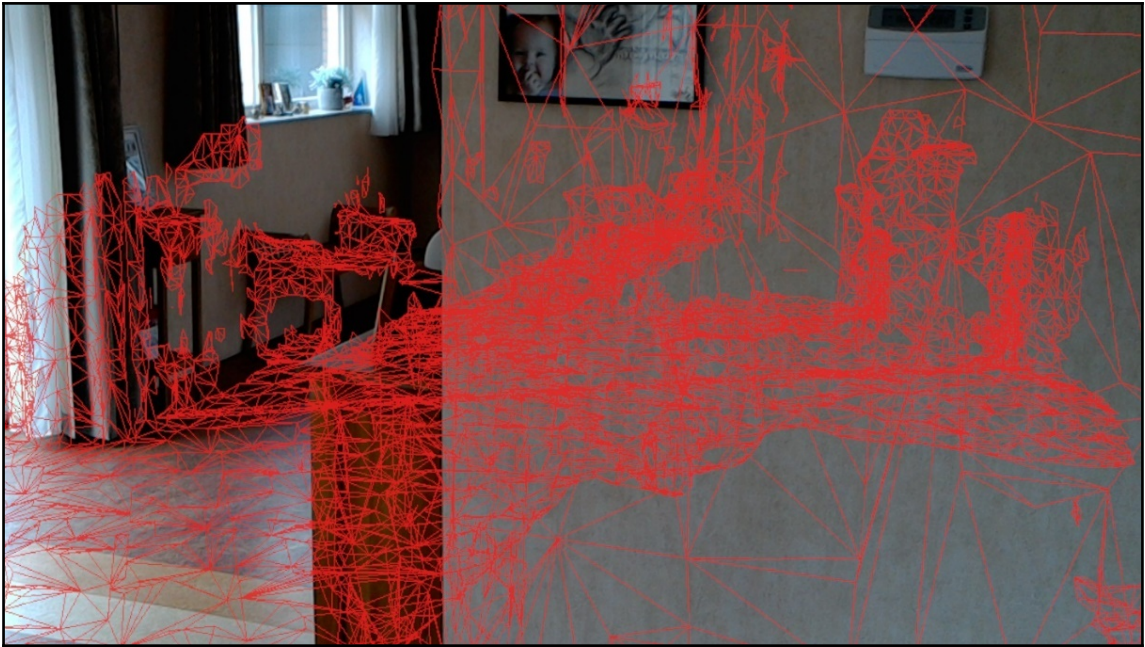


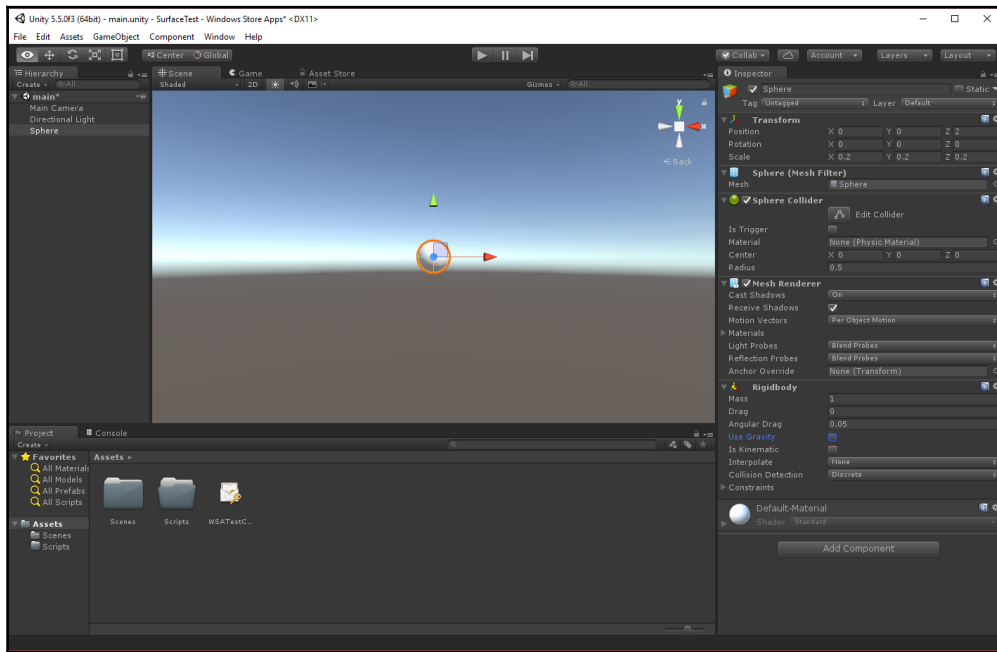
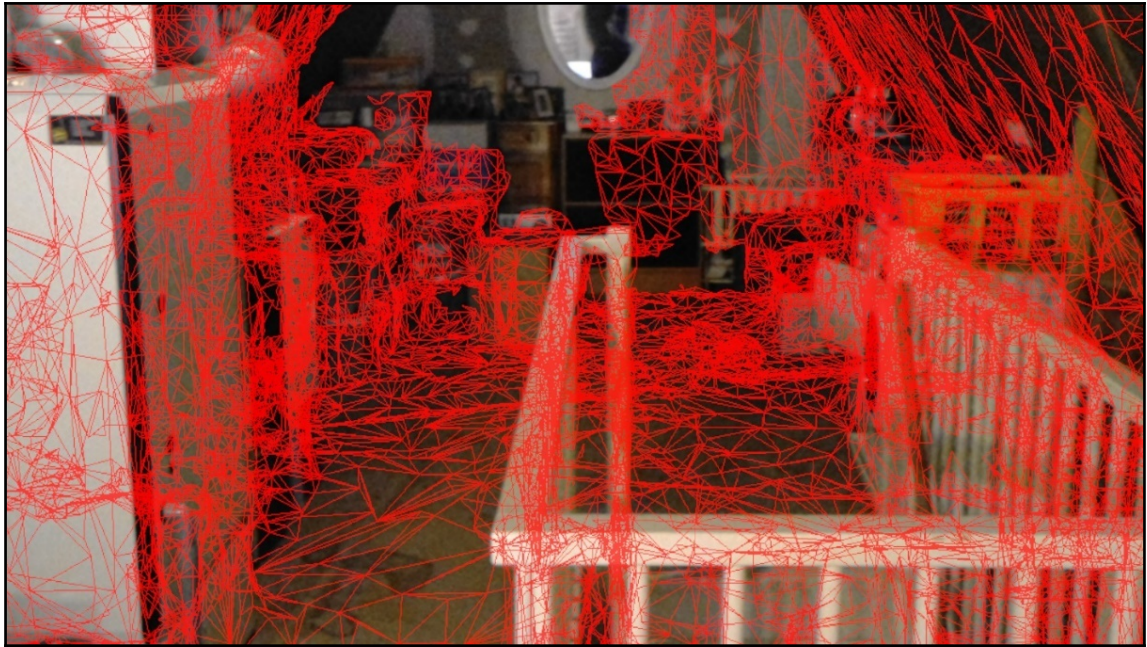


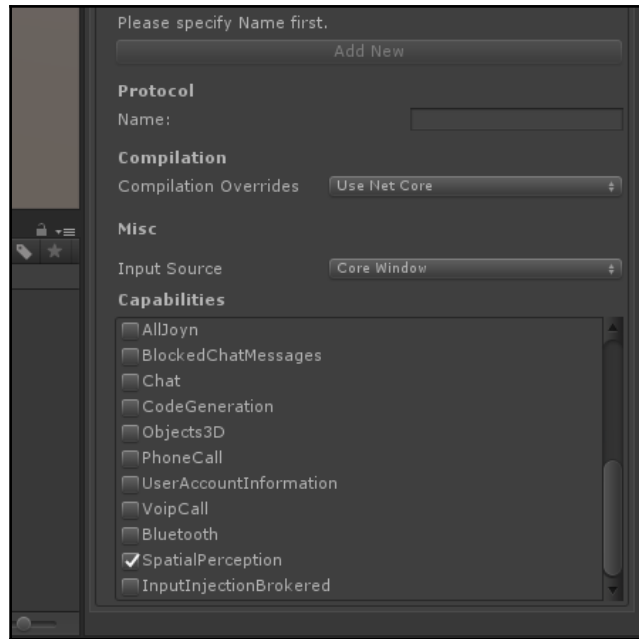


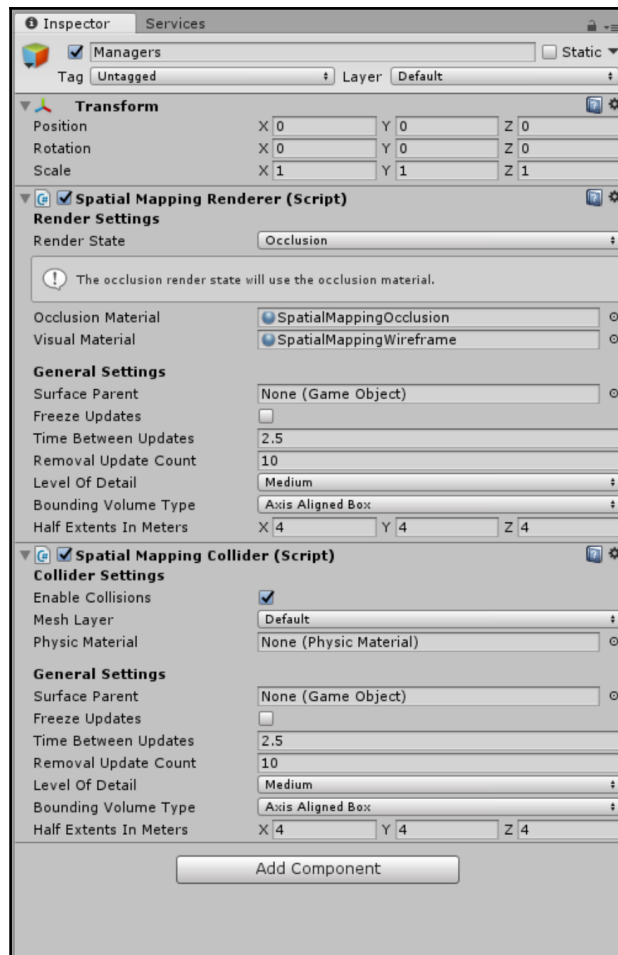
Chapter 6: Take a Look around You - Spatial Mapping

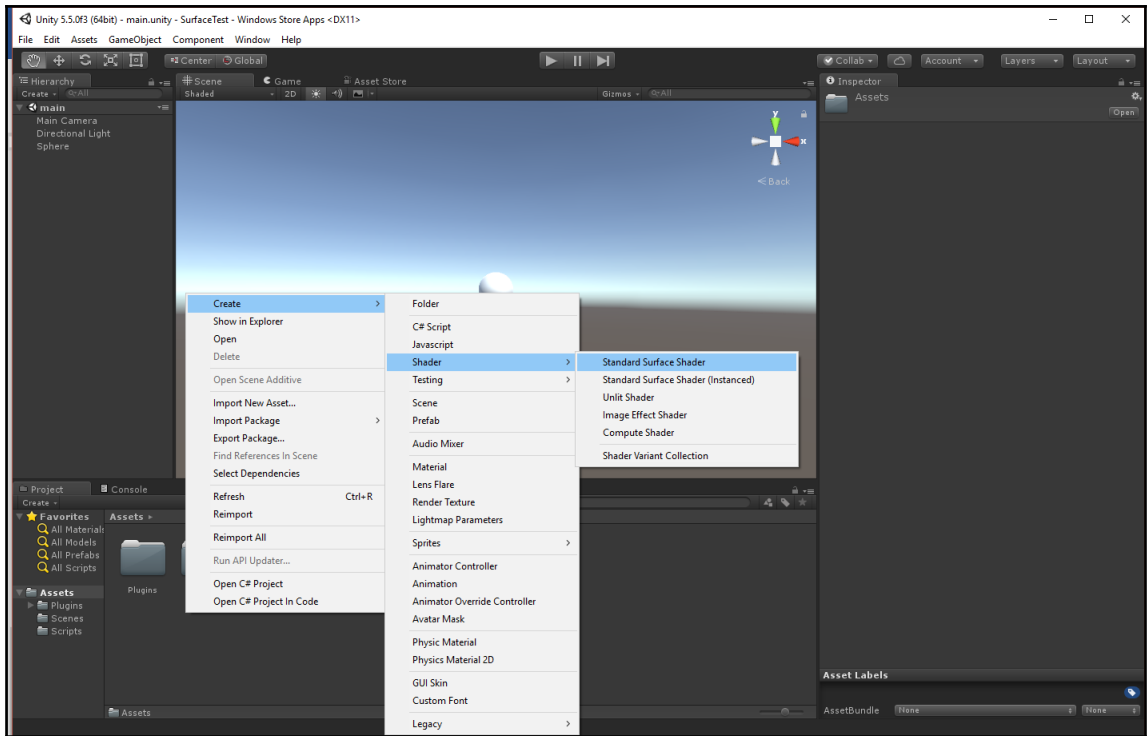


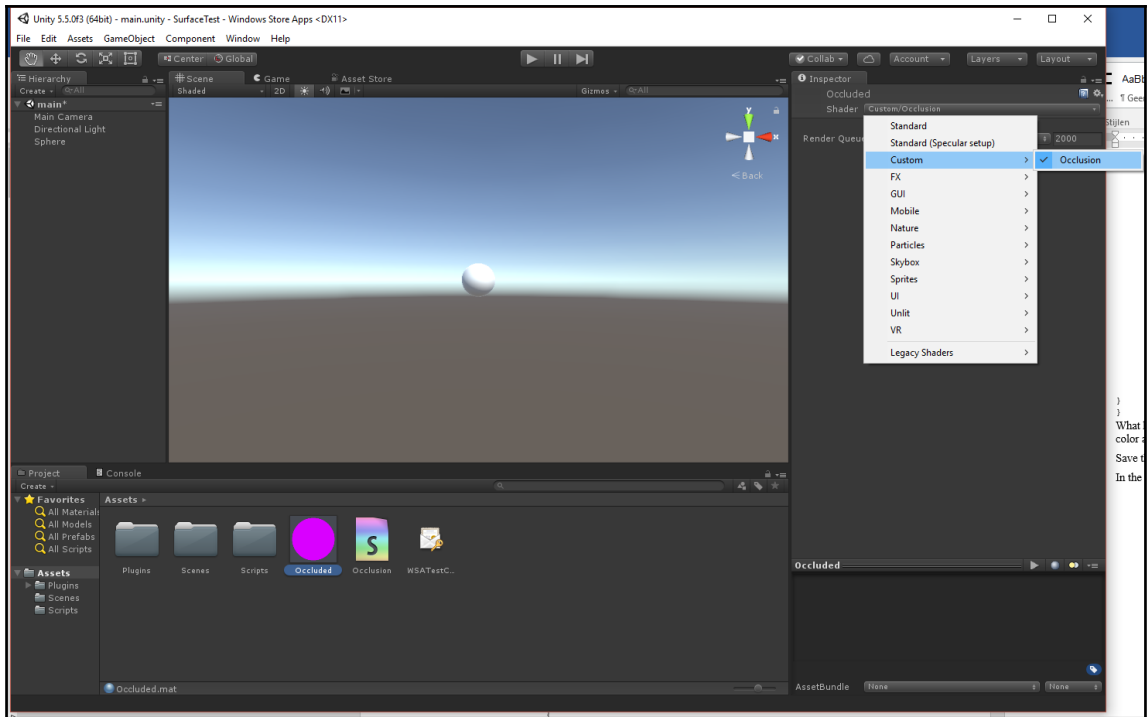




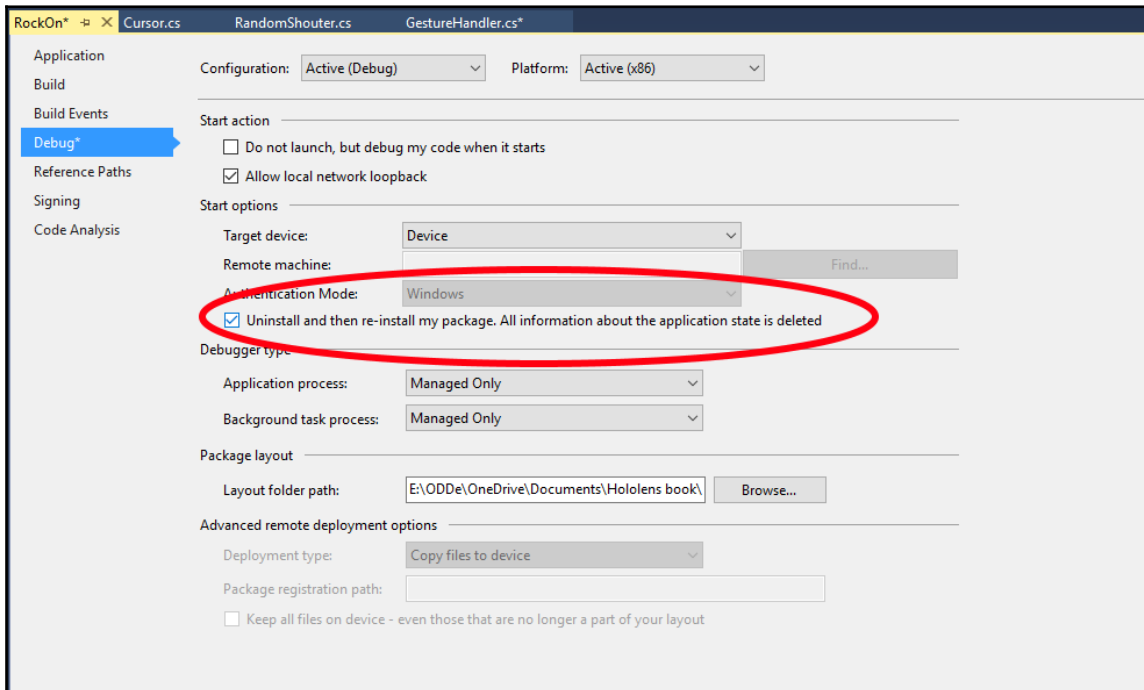
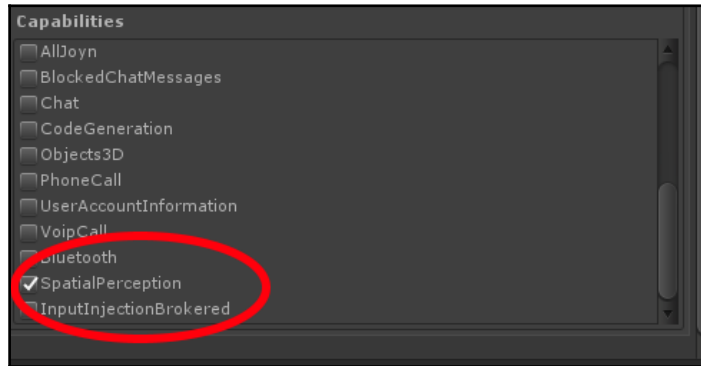


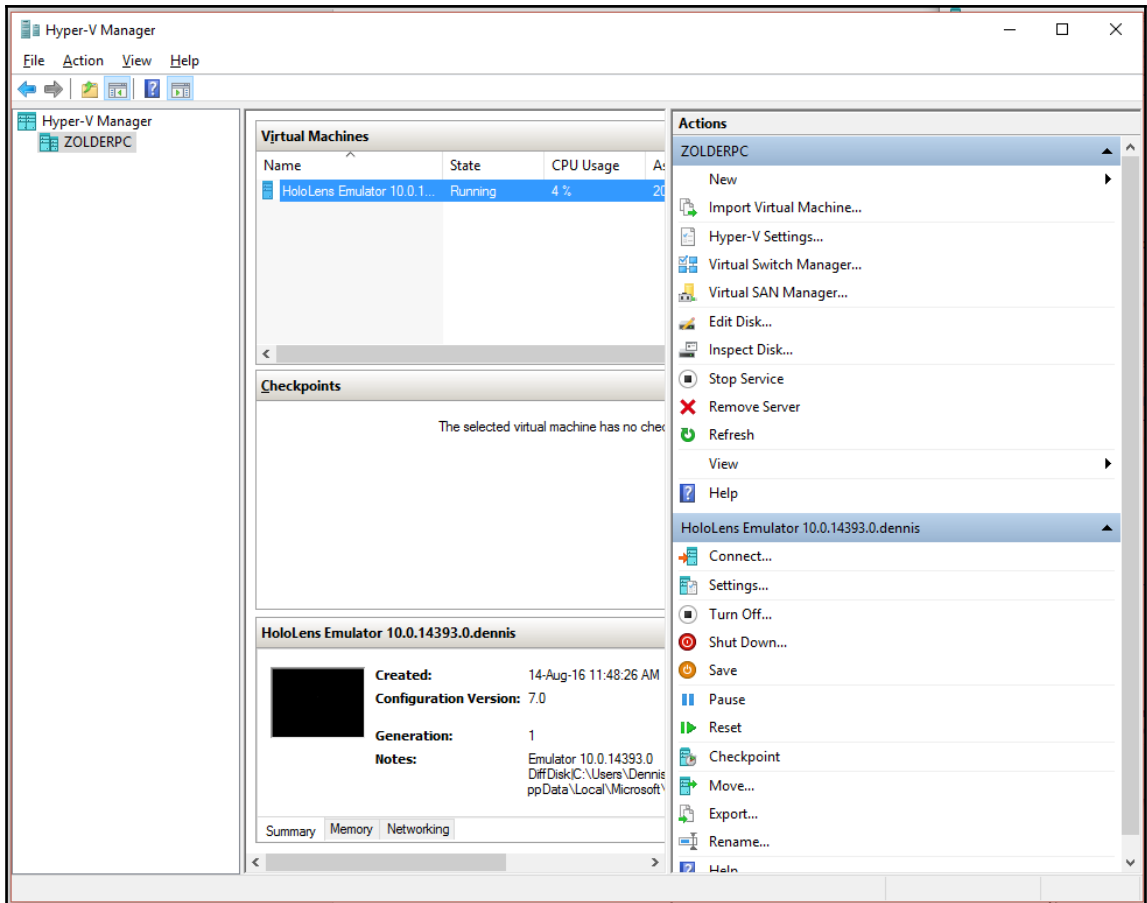


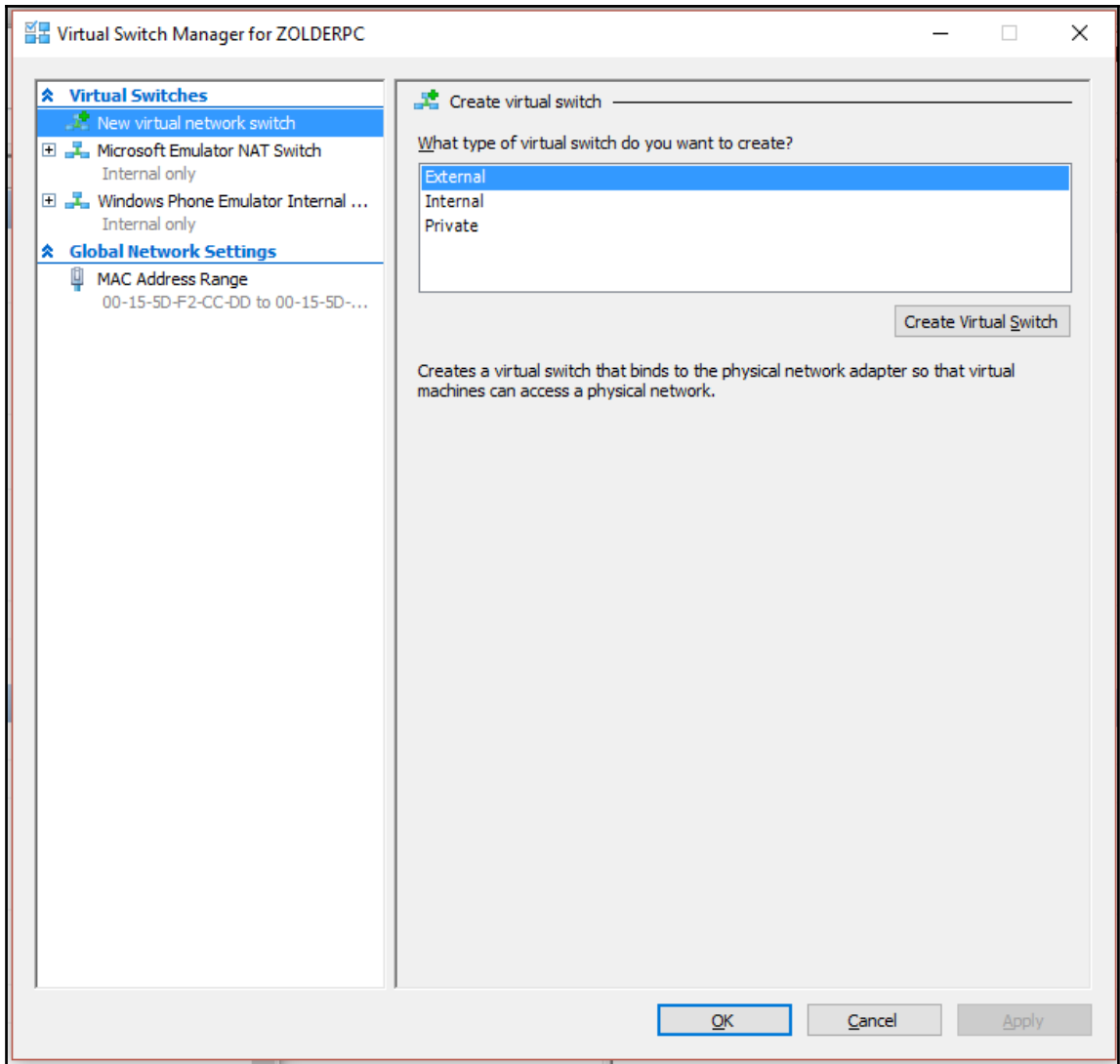


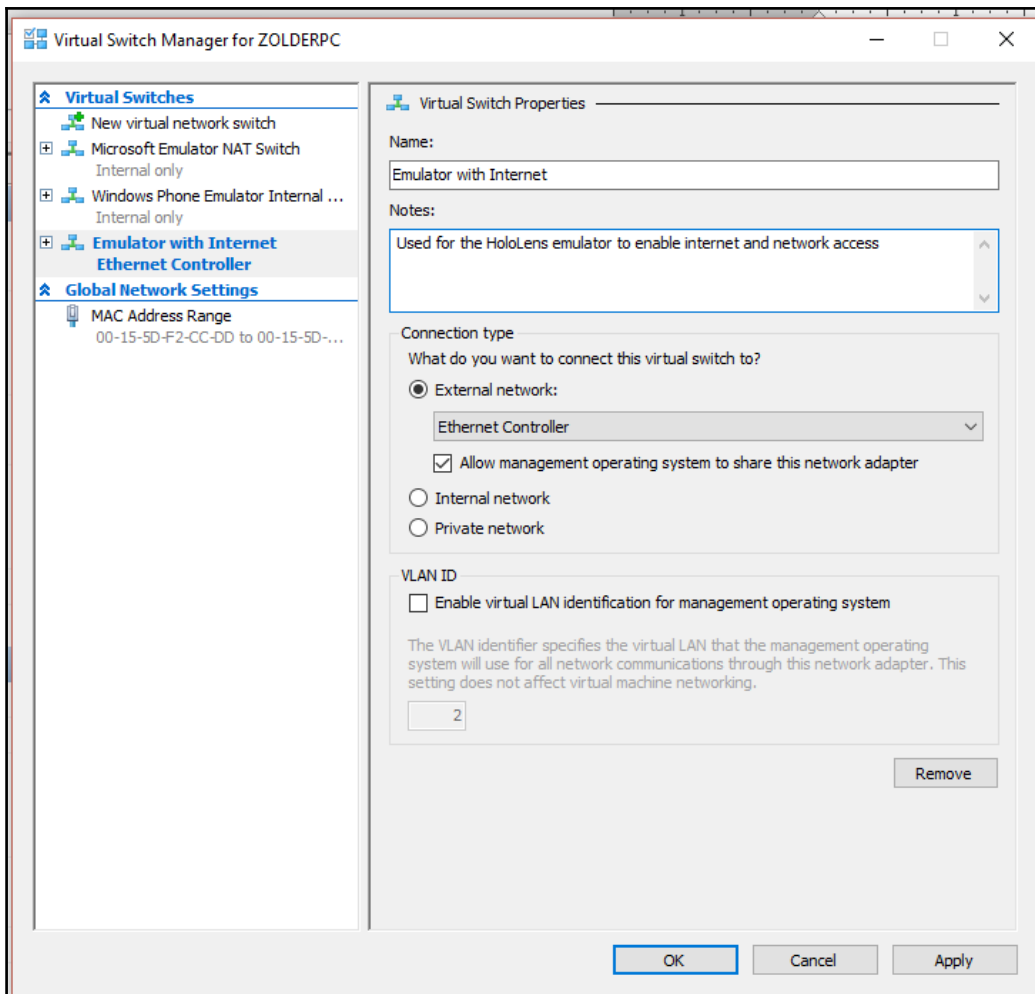


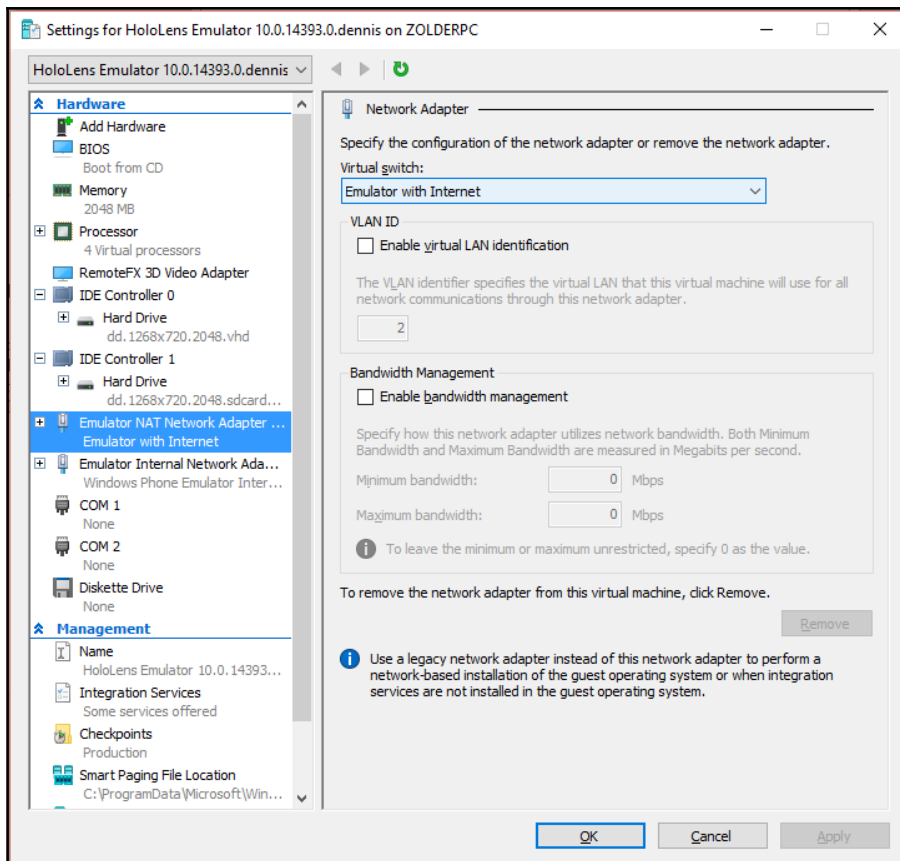
Chapter 7: Let's Talk! Communications between Devices

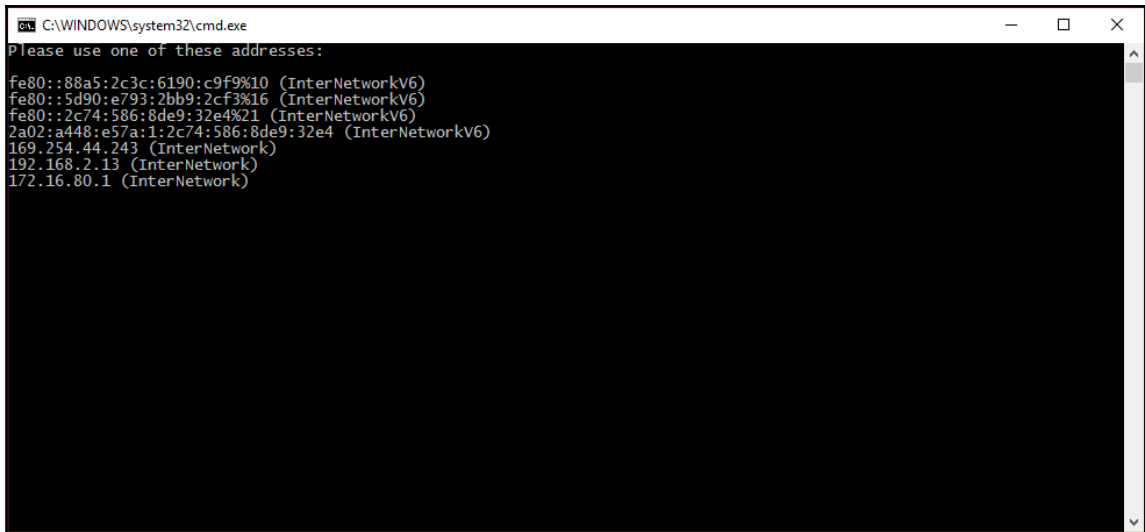












A screenshot of a Windows command prompt window. The title bar reads "C:\WINDOWS\system32\cmd.exe". The window content displays the text "Please use one of these addresses:" followed by a list of network addresses in parentheses: "fe80::88a5:2c3c:6190:c9f9%10 (InterNetworkV6)", "fe80::5d90:e793:2bb9:2cf3%16 (InterNetworkV6)", "fe80::2c74:586:8de9:32e4%21 (InterNetworkV6)", "2a02:a448:e57a:1:2c74:586:8de9:32e4 (InterNetworkV6)", "169.254.44.243 (InterNetwork)", "192.168.2.13 (InterNetwork)", and "172.16.80.1 (InterNetwork)".

```
C:\WINDOWS\system32\cmd.exe
Please use one of these addresses:
fe80::88a5:2c3c:6190:c9f9%10 (InterNetworkV6)
fe80::5d90:e793:2bb9:2cf3%16 (InterNetworkV6)
fe80::2c74:586:8de9:32e4%21 (InterNetworkV6)
2a02:a448:e57a:1:2c74:586:8de9:32e4 (InterNetworkV6)
169.254.44.243 (InterNetwork)
192.168.2.13 (InterNetwork)
172.16.80.1 (InterNetwork)
```

The screenshot shows the Visual Studio Manifest Designer interface. At the top, there are two tabs: "Package.appxmanifest" and "BluetoothAdvertiserMain.cs". Below the tabs, a text box states: "The properties of the deployment package for your app are contained in the app manifest file. You can use the Manifest Designer to set or modify one or more of the properties of the package." Below this text are several tabs: "Application", "Visual Assets", "Capabilities", "Declarations", "Content URIs", and "Packaging". The "Capabilities" tab is selected. Below the tabs, a text box says: "Use this page to specify system features or devices that your app can use." The main area is divided into two columns. The left column is titled "Capabilities:" and contains a list of system features, each with a checkbox. The "Bluetooth" checkbox is checked and highlighted in blue. The right column is titled "Description:" and contains the text: "Allows communication with paired Bluetooth devices over the Generic Attribute (GATT) or Classic Basic Rate (RFCOMM) protocols." Below this text is a link labeled "More information".

Package.appxmanifest BluetoothAdvertiserMain.cs

The properties of the deployment package for your app are contained in the app manifest file. You can use the Manifest Designer to set or modify one or more of the properties of the package.

Application Visual Assets Capabilities Declarations Content URIs Packaging

Use this page to specify system features or devices that your app can use.

Capabilities:

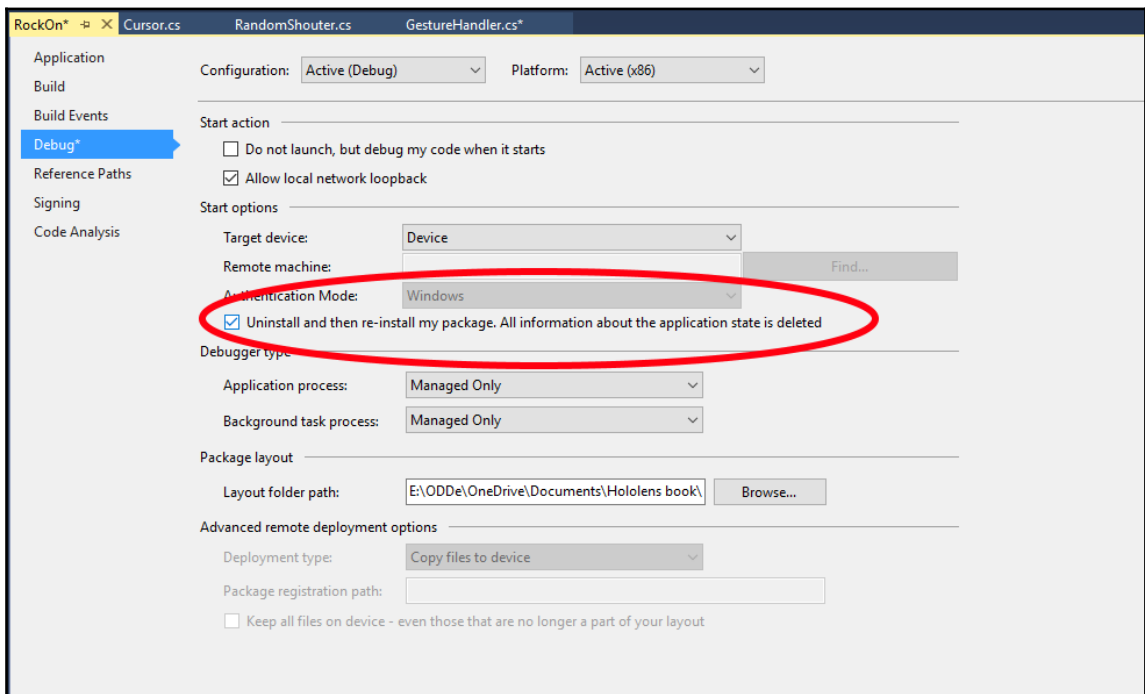
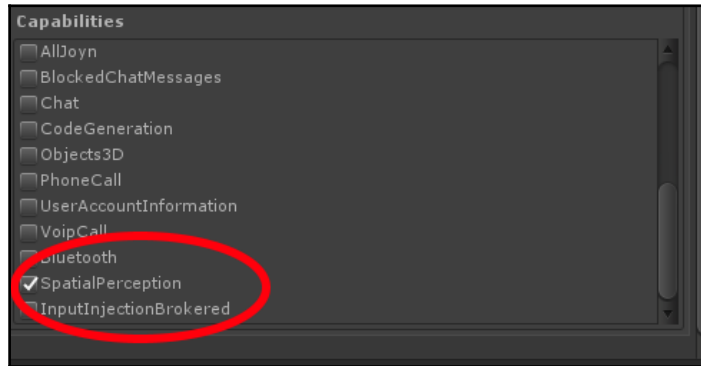
- AllJoyn
- Appointments
- Background Media Playback
- Blocked Chat Messages
- Bluetooth
- Chat Message Access
- Code Generation
- Contacts
- Enterprise Authentication
- Internet (Client & Server)
- Internet (Client)
- Location
- Microphone
- Music Library
- Objects 3D
- Phone Call
- Pictures Library
- Private Networks (Client & Server)
- Proximity
- Remote System
- Removable Storage
- Shared User Certificates
- User Account Information
- User Notification Listeners

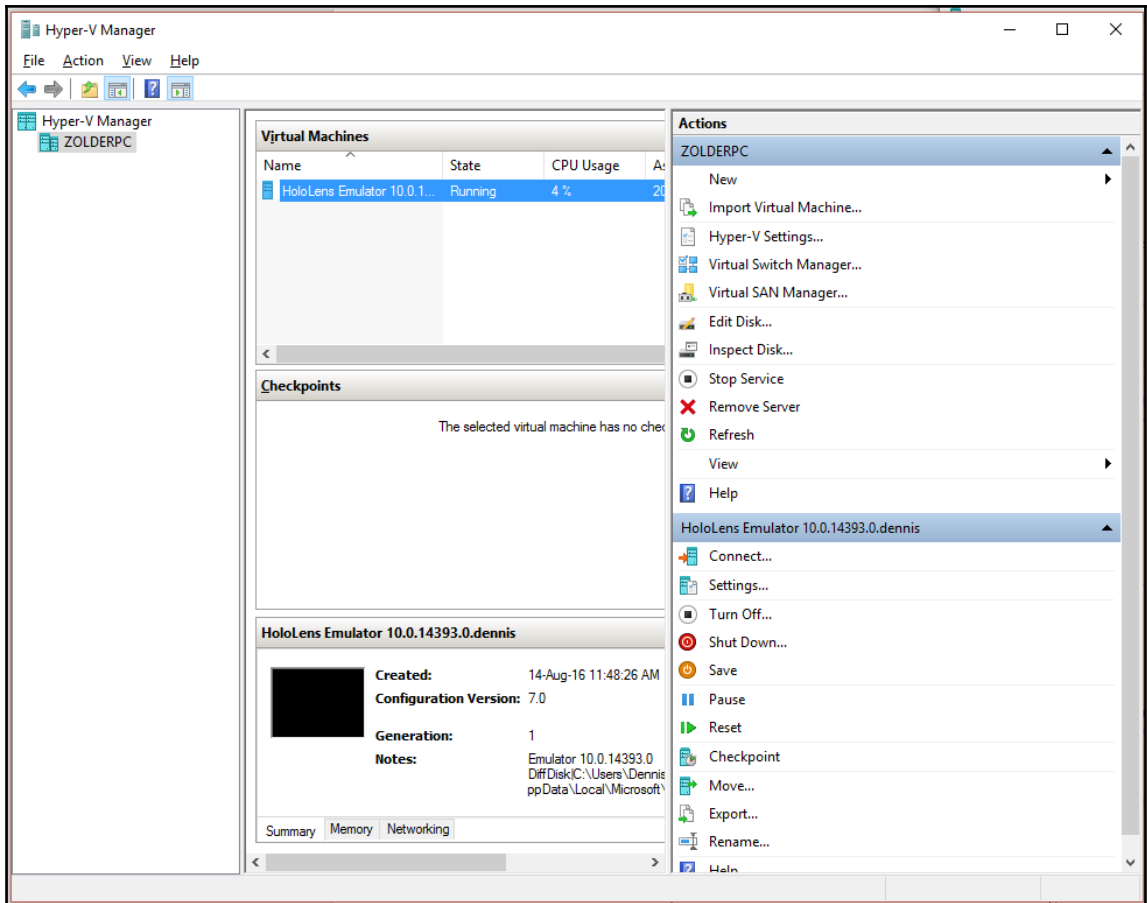
Description:

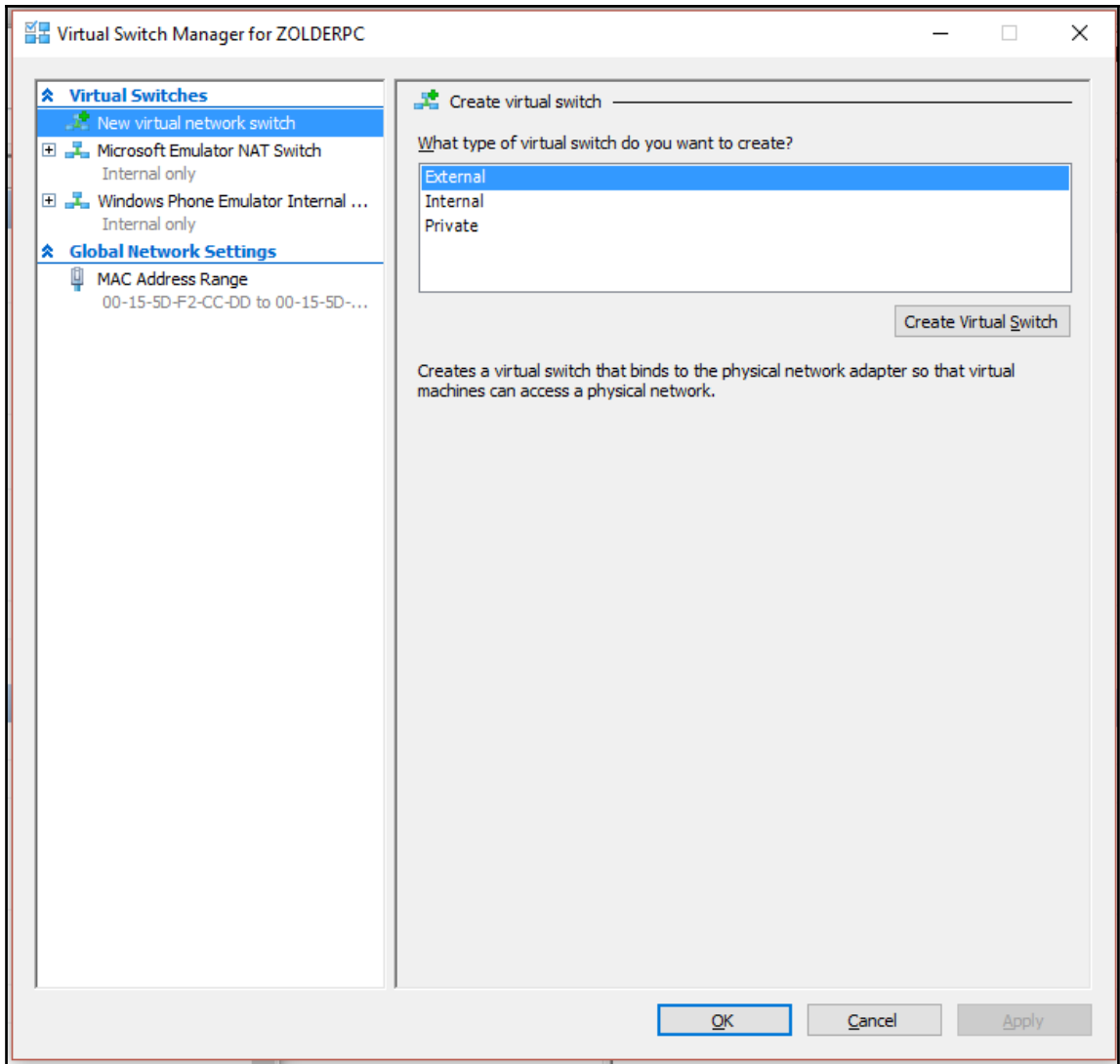
Allows communication with paired Bluetooth devices over the Generic Attribute (GATT) or Classic Basic Rate (RFCOMM) protocols.

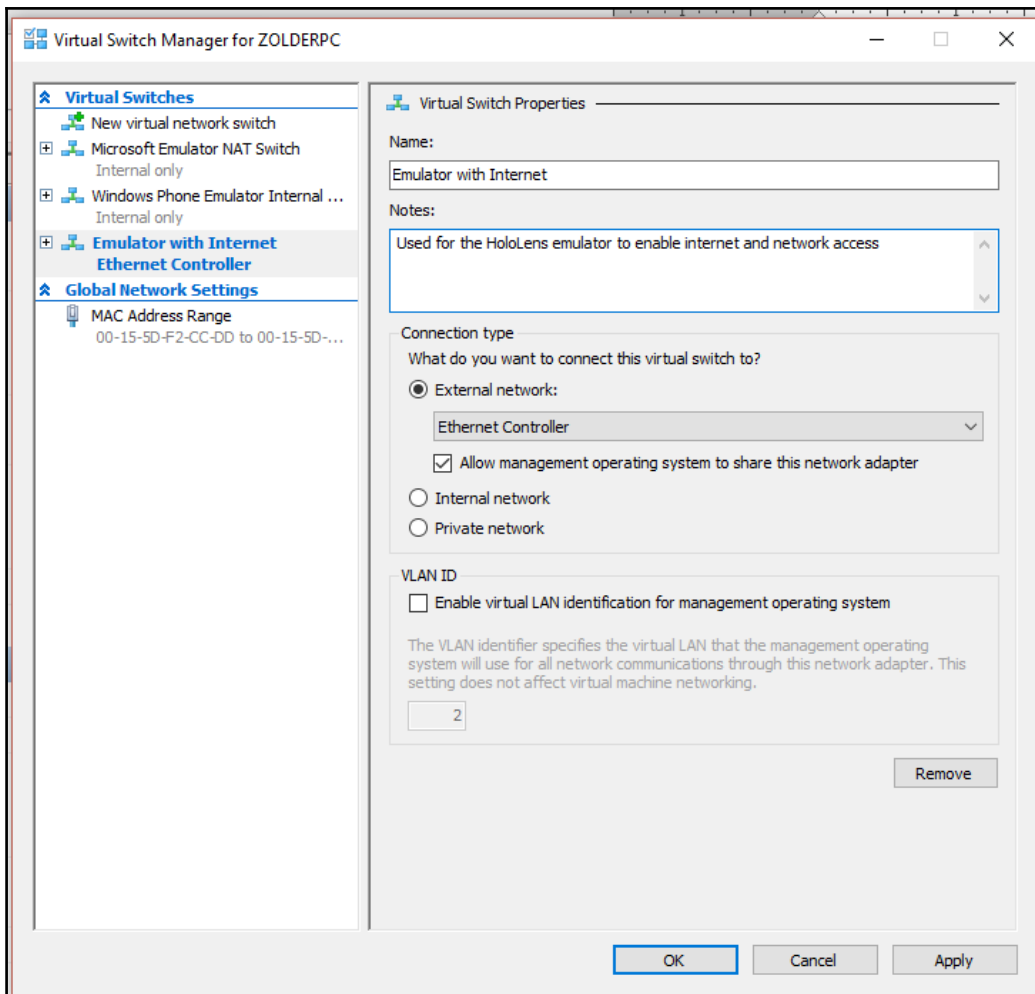
[More information](#)

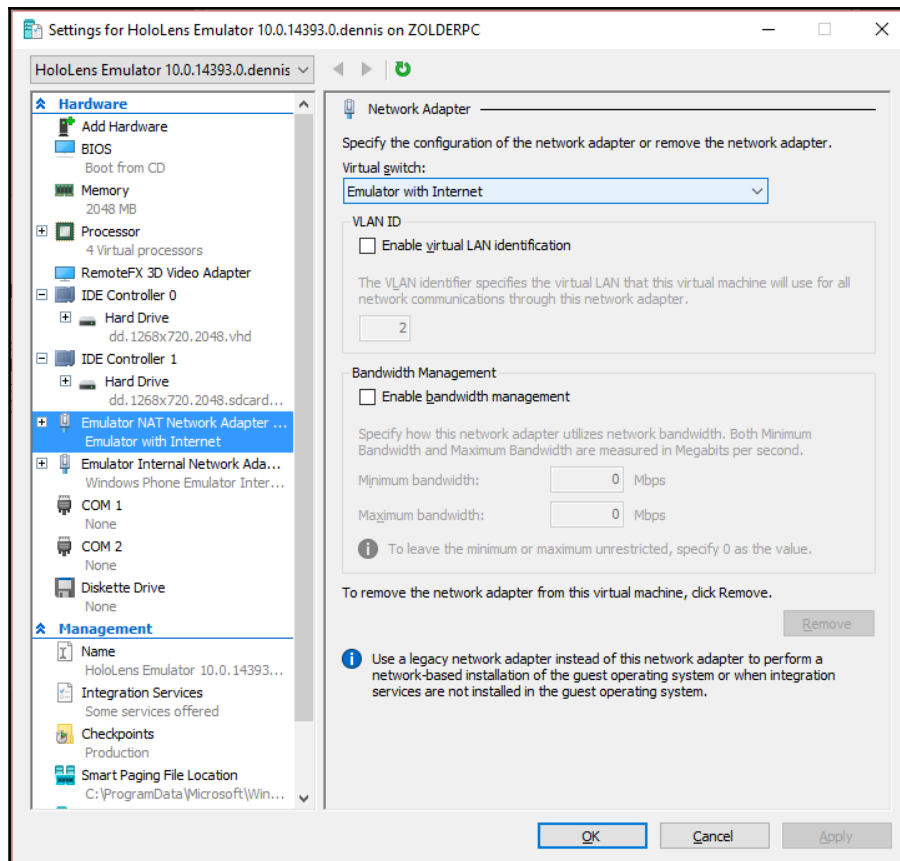
Chapter 8: Speed Up Your Development - Advanced Unity3D

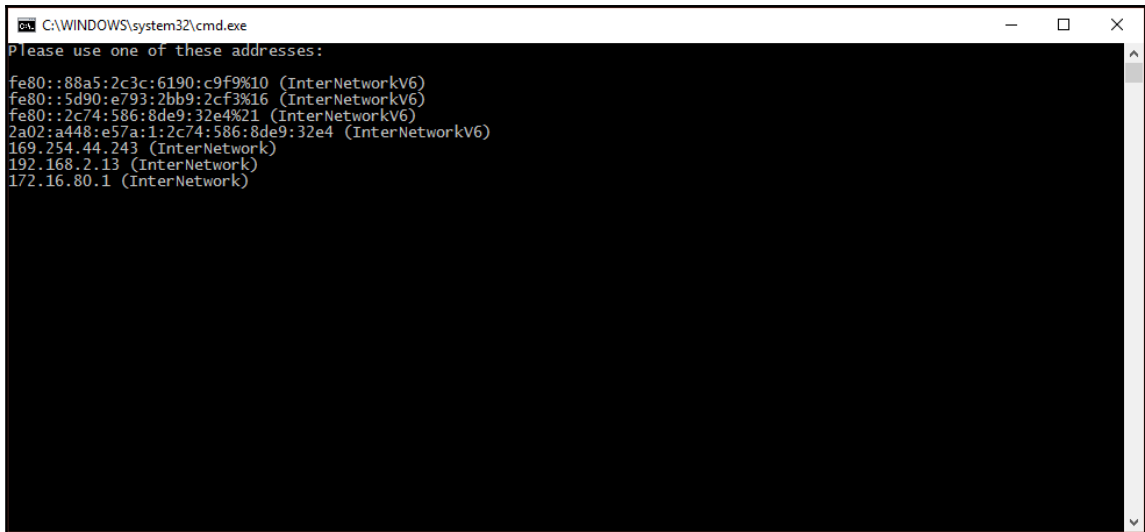












A screenshot of a Windows command prompt window. The title bar reads "C:\WINDOWS\system32\cmd.exe". The window content displays the text "Please use one of these addresses:" followed by a list of network addresses in parentheses:

```
Please use one of these addresses:  
fe80::88a5:2c3c:6190:c9f9%10 (InterNetworkV6)  
fe80::5d90:e793:2bb9:2cf3%16 (InterNetworkV6)  
fe80::2c74:586:8de9:32e4%21 (InterNetworkV6)  
2a02:a448:e57a:1:2c74:586:8de9:32e4 (InterNetworkV6)  
169.254.44.243 (InterNetwork)  
192.168.2.13 (InterNetwork)  
172.16.80.1 (InterNetwork)
```

