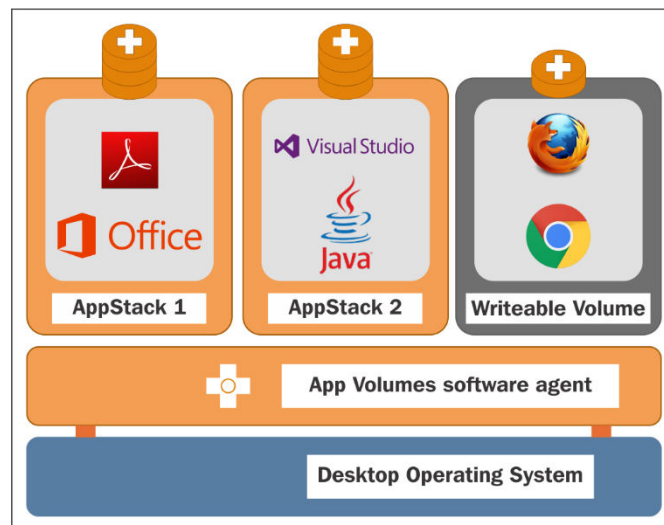
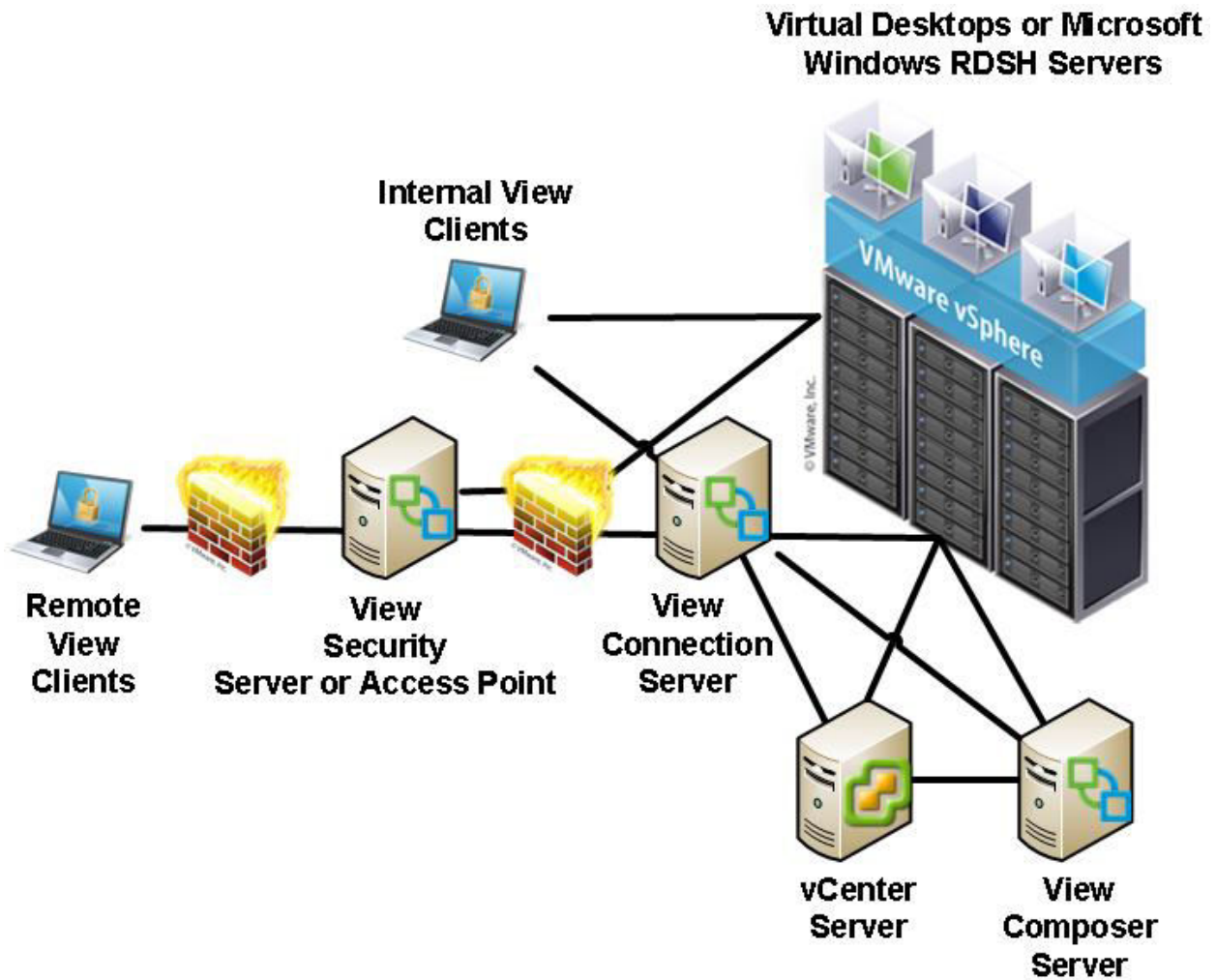
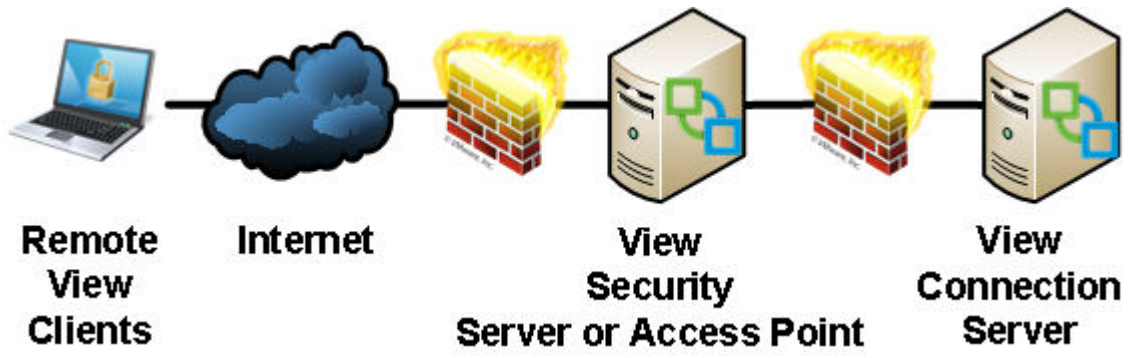
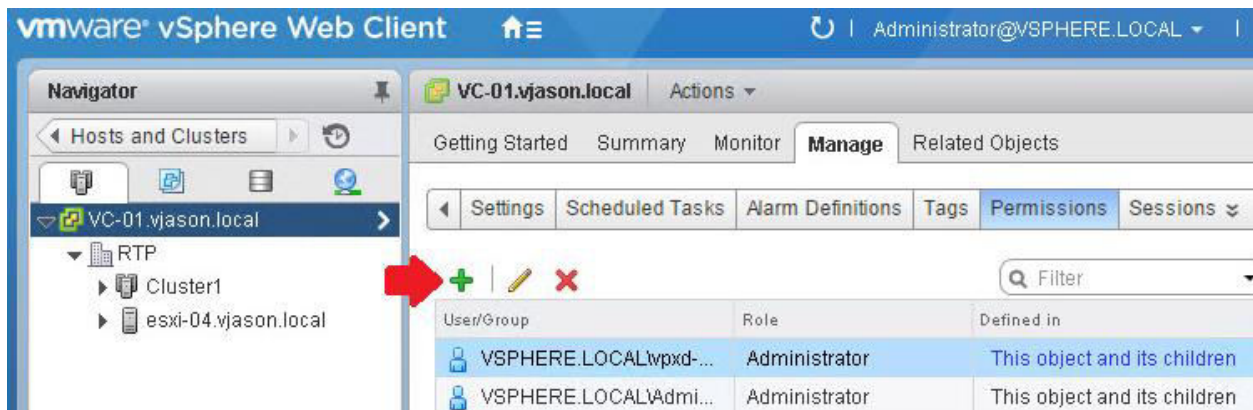
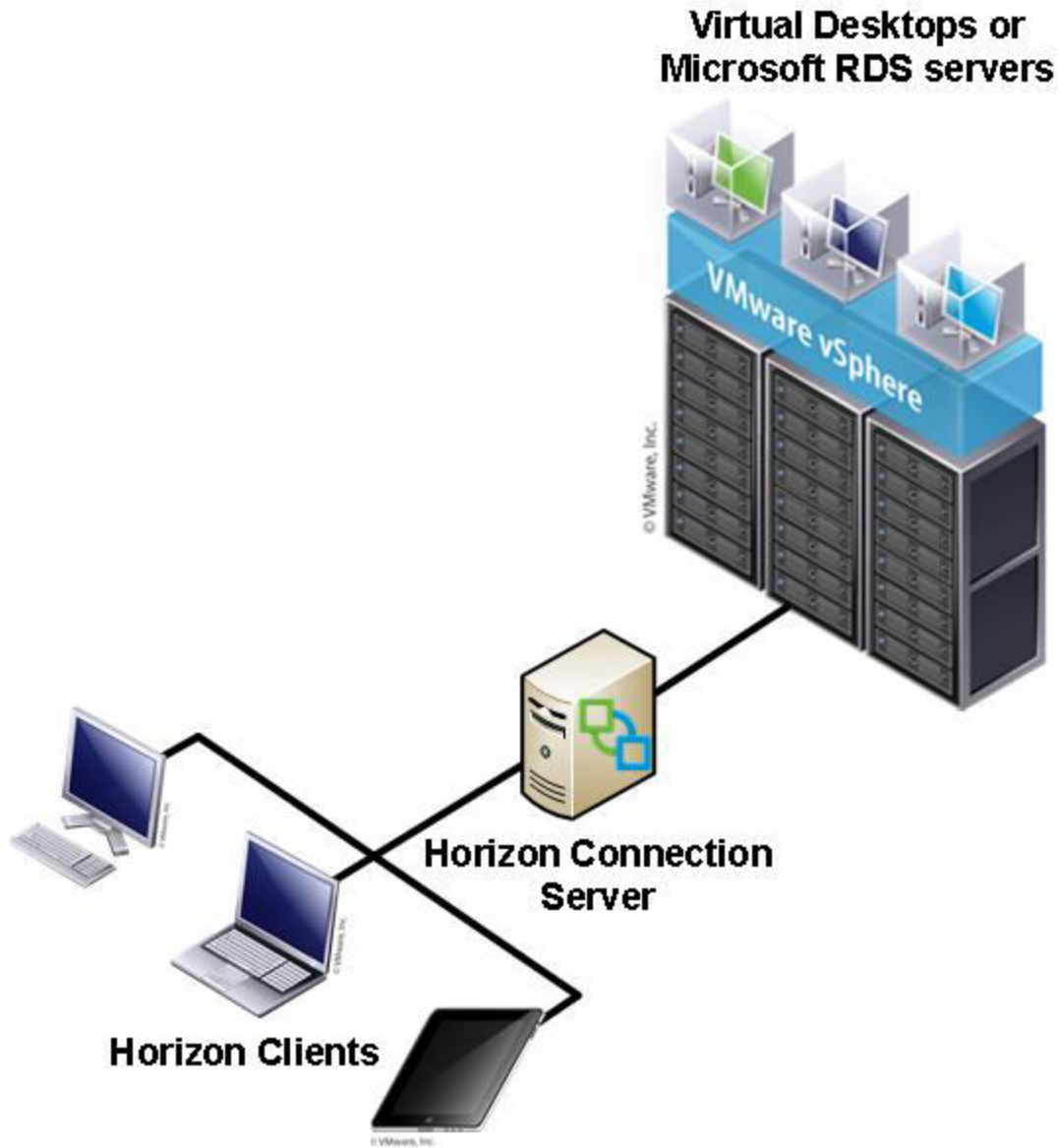


Chapter 1: VMware Horizon Infrastructure Overview





Chapter 2: Implementing Horizon Connection Server



Select the users or groups on the left and the role to assign to them on the right.

Select Users/Groups

The users or groups listed below are assigned the role selected on the right on VC-01.vjason.local.

Domain:

Users and Groups

Show Users First

User/Group	Description/Full name
svc-horizon	svc-horizon
svc-horizoncomp	

Users:

Groups:

Separate multiple names with semicolons

VC-01.vjason.local - Add Permission

Select the users or groups on the left and the role to assign to them on the right.

Users and Groups	Assigned Role
<p>The users or groups listed below are assigned the role selected on the right on VC-01.vjason.local.</p>	<p>The users or groups obtain the permissions on the selected objects as defined by their assigned role.</p> <p><input type="text" value="Horizon Administrator"/></p>

Installation Options

Select the type of Horizon 7 Connection Server instance you want to install.

Select the type of Horizon 7 Connection Server instance you want to install.

Horizon 7 Standard Server
Horizon 7 Replica Server
Horizon 7 Security Server
Horizon 7 Enrollment Server

Install HTML Access

Perform a standard full install. This is used to install a standalone instance of Horizon 7 Connection Server or the first instance of a group of servers.

Specify what IP protocol version shall be used to configure this Horizon 7 Connection Server instance:

IPv4
IPv6

This server will be configured to choose the IPv4 protocol for establishing all connections.

Authorize the local Administrators group

Authorize a specific domain user or domain group

VJASON\Horizon_Admins

(domainname\username, domainname\groupname or UPN format)

< Back

Next >

User name: administrator

Password: *****

Domain: VJASON

Remember user name

Log In

VMware Horizon™ 7
Administrator™

Updated 5/1/2016 10:57 AM

Sessions 0
 Problem vCenter VMs 0
 Problem RDS Hosts 0
 Events 0 0
 System Health 1 1 1 0

Inventory

- Dashboard
- Users and Groups
- ▶ Catalog
- ▶ Resources
- ▶ Monitoring
- ▶ Policies
- ▼ View Configuration
 - Servers
 - Instant Clone Domain Admins
 - Product Licensing and Usage

Licensing and Usage

Licensing

No valid license present for View Manager. Click Edit to add a valid license.

Customer Experience Program

Send anonymous data to VM
 Geographic Location:
 Business Vertical:
 Number of Employees:

Usage

Session Mode	Current	Highest
Total Concurrent Co	0	0

Edit Event Database

Database server:

Database type: ▼

Port:

Database name:

User name:

Password:

Confirm password:

Table prefix:

Add vCenter Server

Add vCenter Server

VC Information

View Composer
Storage
Ready to Complete

vCenter Server Information

vCenter Server Settings

Server address:

User name:

Password:

Description:

Port:

vCenter Se

Before you
View, install
signed by a
environmen
default, self
installed wit
you must ac
thumbprint.

Provide the
IP address, ::

Add vCenter Server

Add vCenter Server

VC Information
View Composer
Storage
Ready to Complete

Storage

Storage Settings

Reclaim VM disk space


Enable View Storage Accelerator


Default host cache size: MB

Cache must be between 100 MB and 2048 MB

Servers

vCenter Servers Security Servers Connection Servers

Add... Edit... Remove... Disable Provisioning... Enable Provisioning... 

vCenter Server	VM Disk Space Reclamation	View Storage Accelerator	Provisioning
 vc-01.vjason.local(vjason\s	✓	✓	✓

A group of Horizon 7 Connection Server instances that share the same configuration data is called a Horizon 7 Connection Server group. Setup will replicate configuration data from an existing server instance.

Enter the server name of an existing Horizon 7 Connection Server instance to make this server part of that group.

Example server: view.internal.vmware.com.

Server: (hostname or IP address)

Updated 5/1/2016 11:11 AM

Sessions 1
 Problem vCenter VMs 0
 Problem RDS Hosts 0
 Events 3
 System Health 24 0 0 0

Inventory

Servers

vCenter Servers Security Servers Connection Servers

Enable Disable Edit... Backup Now... More Commands

Connection Server	Version	PCoIP Secu...	State	Settings
VIEWCS01	7.0.0-3633490	Installed	Enabled	Secure tunnel connection,

Servers

vCenter Servers Security Servers Connection Servers

Enable Disable Edit... Backup Now... More Commands

Connection Server	Version	PCoIP Secu...	State	Settings
VIEWCS01	7.0.0-3633490	Installed	Enabled	Secure tunnel connection,
VIEWCS02	7.0.0-3633490	Installed	Enabled	Secure tunnel connection,

Edit Connection Server Settings

General Authentication Backup

Changes to backup settings will take effect immediately

Automatic backup frequency: Every day

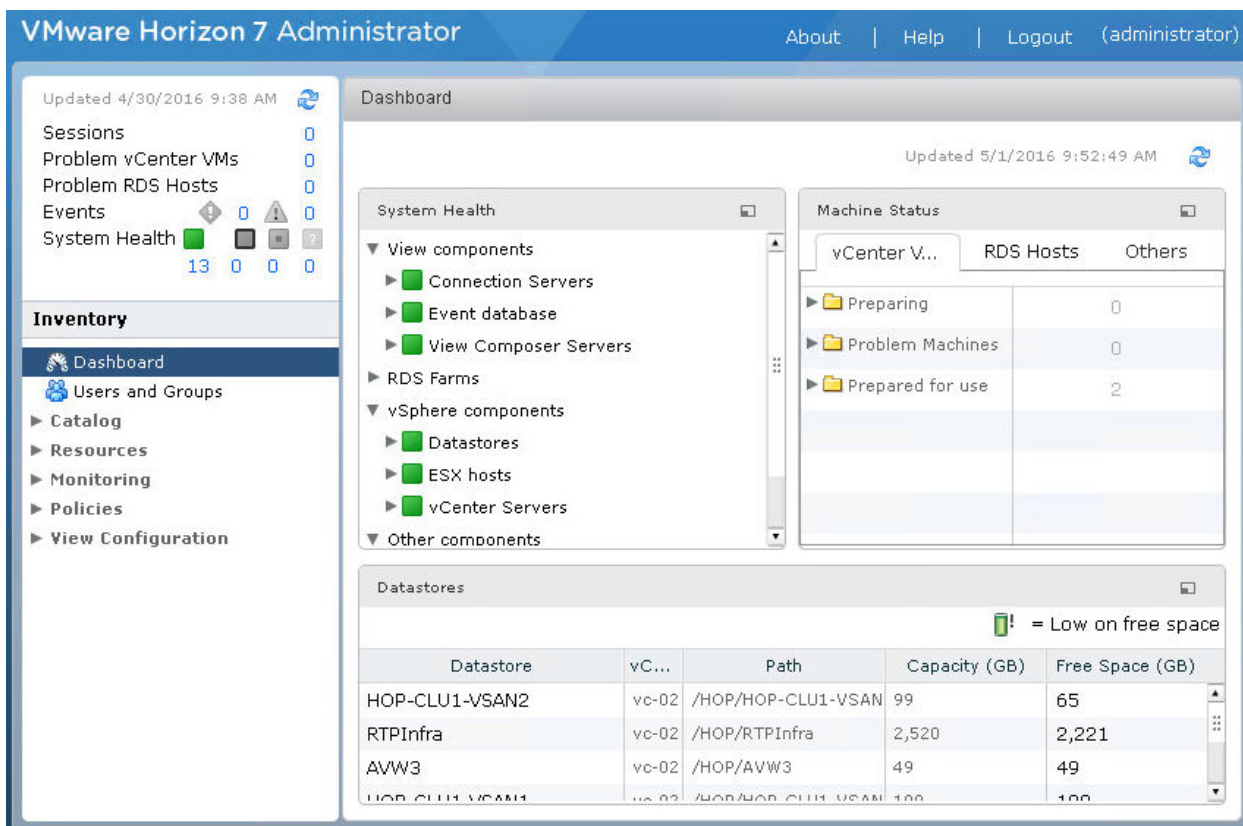
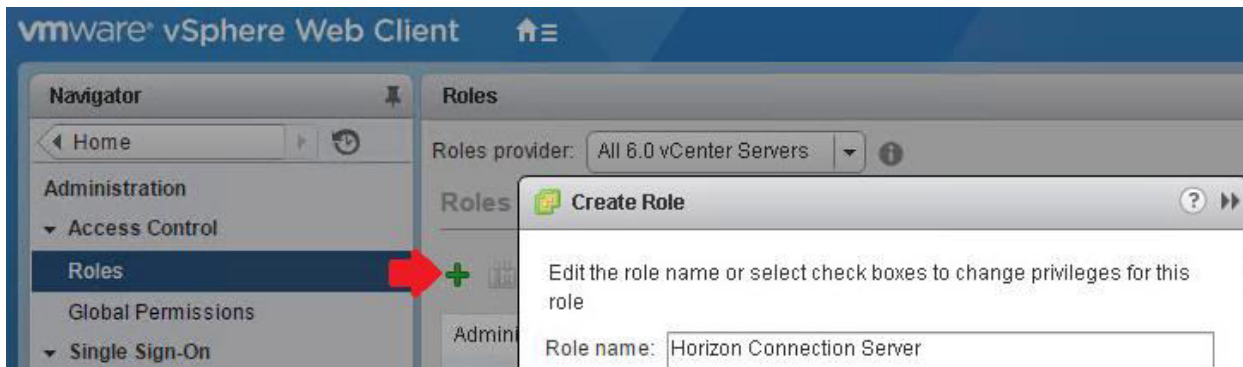
Backup time: 12 midnight

Backup time offset: 0 Minutes

Max number of backups: 10

Folder location: C:\ProgramData\VMware\VDM\backups

Change data recovery password



Instant Clone Engine Domain Administrators

Add... Edit... Remove...

Domains	
Add Domain Admin	
Full domain name:	vjason.local ▾
User name:	svc-horizonic
Password:	*****

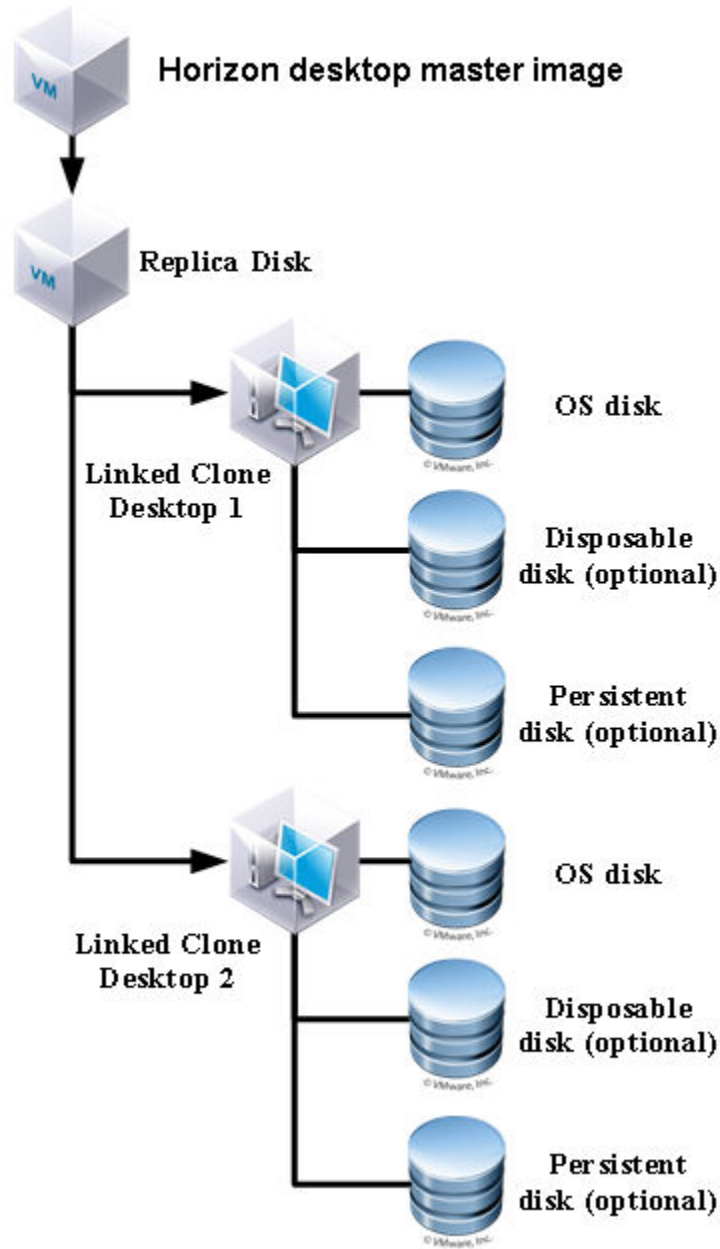
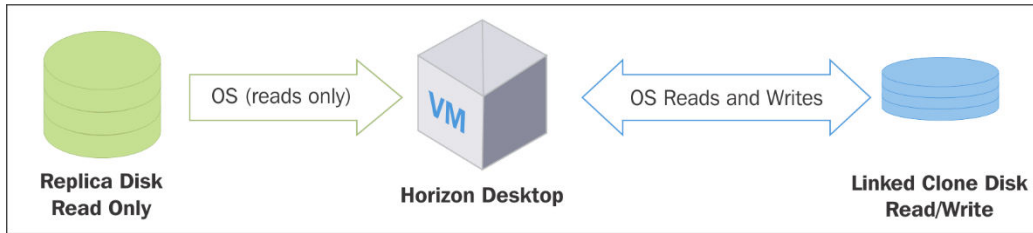
OK

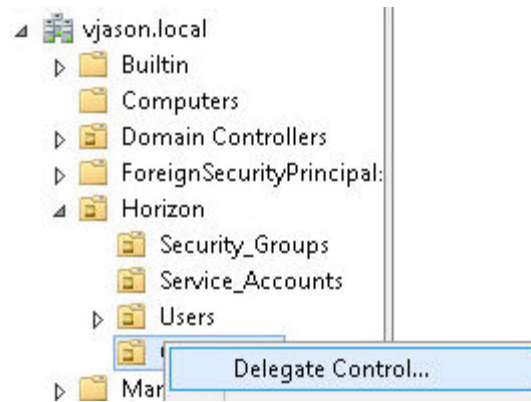
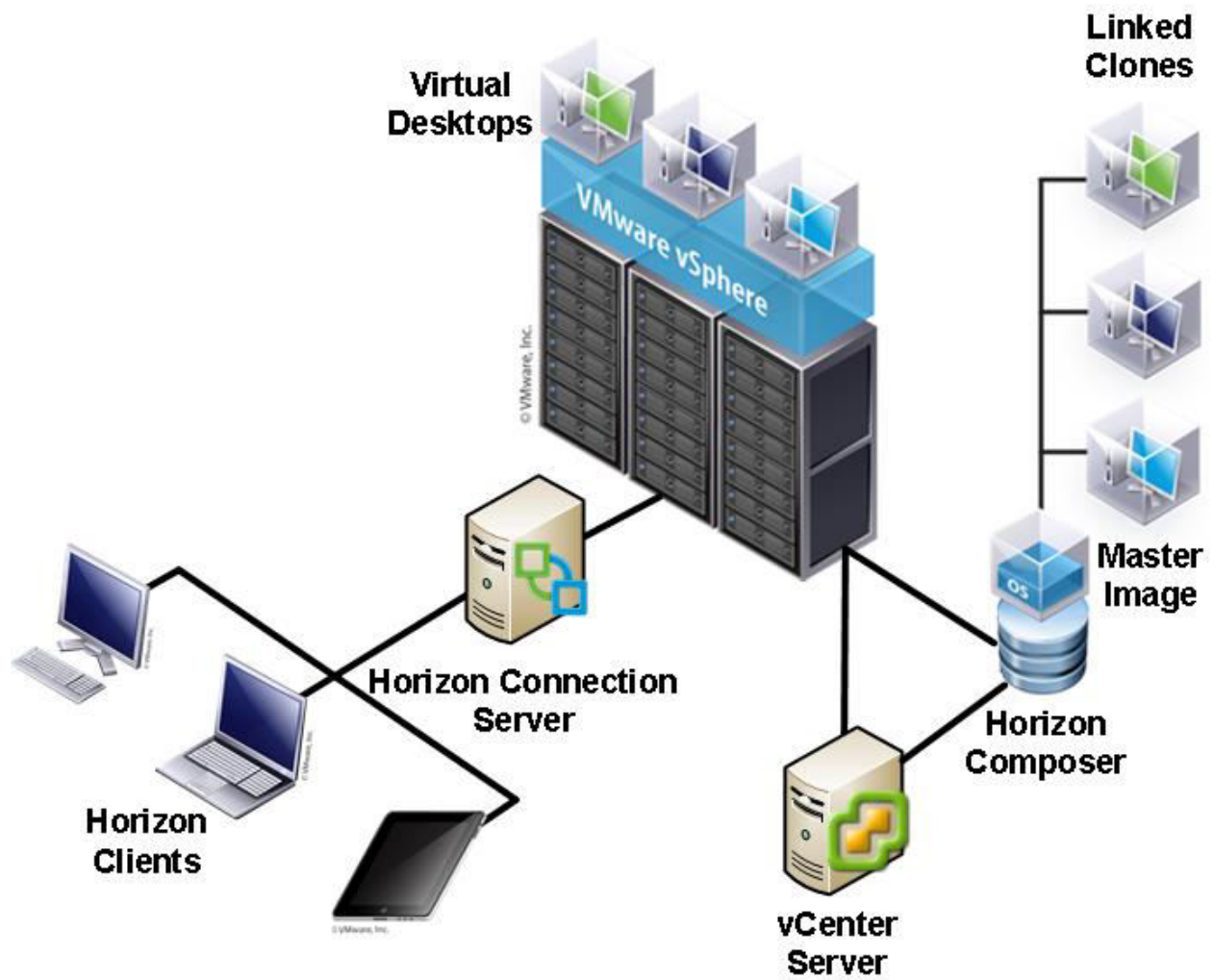
Instant Clone Engine Domain Administrators

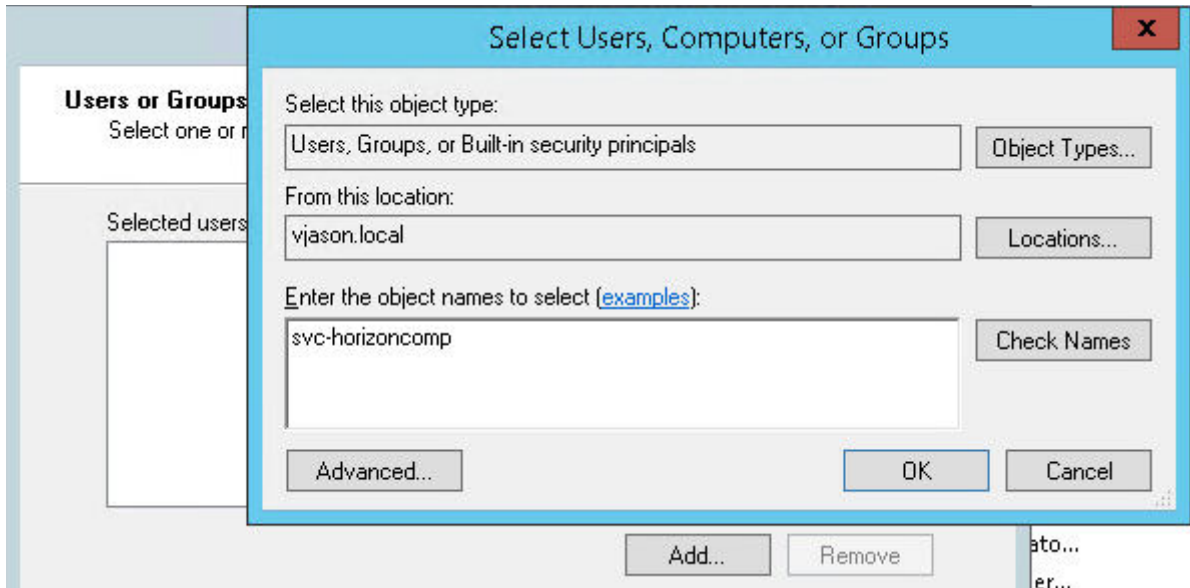
Add... Edit... Remove...

Domains	User
vjason.local	svc-horizonic

Chapter 3: Implementing Horizon Composer







Active Directory Object Type

Indicate the scope of the task you want to delegate.



Delegate control of:

This folder, existing objects in this folder, and creation of new objects in this folder

Only the following objects in the folder:

<input type="checkbox"/>	account objects
<input type="checkbox"/>	aCSResourceLimits objects
<input type="checkbox"/>	applicationVersion objects
<input type="checkbox"/>	bootableDevice objects
<input type="checkbox"/>	certificationAuthority objects
<input checked="" type="checkbox"/>	Computer objects

Create selected objects in this folder

Delete selected objects in this folder

Permissions

Select the permissions you want to delegate.



Show these permissions:

- General
- Property-specific
- Creation/deletion of specific child objects

Permissions:

- Read
- Write
- Create All Child Objects
- Delete All Child Objects
- Read All Properties
- Write All Properties
- Change password

Composer_Pod1

ODBC DSN Setup...

Enter the username that you entered in the ODBC Data Source Administrator.

composer

Enter the password for this database connection.

.....

VMware Horizon 7 Composer Port Settings

Enter the connection information for the VMware Horizon 7 Composer.



Specify the web access port and security settings for VMware Horizon 7 Composer.

SOAP Port:

SSL Certificate: No SSL certificates were found on your machine.
A default SSL certificate will be created for you.

VMware Horizon 7 Administrator

Updated 4/30/2016 9:38 AM

Sessions	0
Problem vCenter VMs	0
Problem RDS Hosts	0
Events	0
System Health	13

Servers

vCenter Servers Security Servers

Add... Edit... Remove Disable

vCenter Server

vc-01.vjason.local(vjason\svc-horizon)

Edit vCenter Server

View Composer Settings

Do not use View Composer

View Composer co-installed with vCenter Server
Choose this if View Composer is installed on the same server as vCenter

Port:

Standalone View Composer Server
Choose this if View Composer is installed on a separate server from vCenter

Server address:

User name:

Password:

Port:

Domains

Edit Domain

Full domain name:

User name:

Password:

OK Cancel

Domains

Add... Edit... Remove...

• Standalone View Composer Server

Choose this if View Composer is installed on a separate server from vCenter

Server address:

User name:

Password:

Port:

Domains

Add... Edit... Remove...

Domains	User	Desktop Pool
vjason.local	svc-horizoncomp	

VMware Horizon 7 Administrator

Updated 4/30/2016 9:38 AM

Sessions 0

Problem vCenter VMs 0

Problem RDS Hosts 0

Events 0

System Health 13 0 0 0

Servers

vCenter Servers Security Servers

Add... Edit... Remove Disable

vCenter Server

vc-01.vjason.local(vjason\svc-horizon)


```
c:\Windows\Microsoft.NET\Framework\v4.0.30319>aspnet_regiis.exe -px "SviKeyContainer" "keys.xml" -pri
Microsoft (R) ASP.NET RegIIS version 4.0.30319.34209
Administration utility to install and uninstall ASP.NET on the local machine.
Copyright (C) Microsoft Corporation. All rights reserved.
Exporting RSA Keys to file...
Succeeded!
```

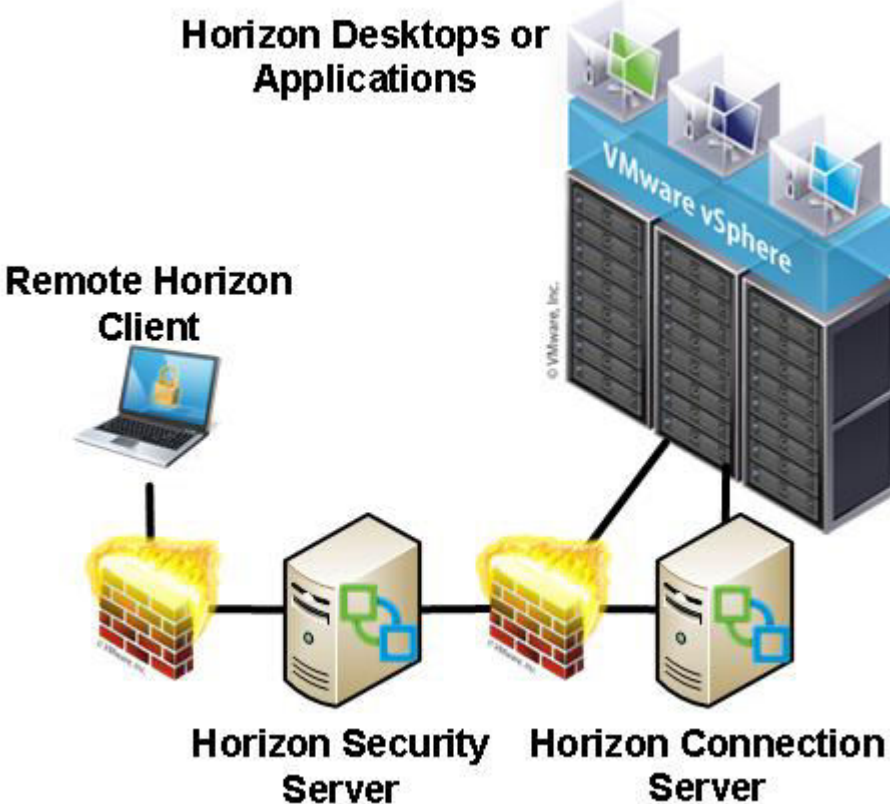
```
Object type AdConfigEntryDo found in the backup
Object type UcConfigEntryDo found in the backup
Object type AuthorizedUserDo found in the backup
Object type SequenceNumDo found in the backup
Object type UmNameDo found in the backup
Object type GuestComputerNameDo found in the backup
Object type ReplicaDo found in the backup
Object type DeploymentGroupDo found in the backup
Object type SimCloneDo found in the backup
Restoring data finished successfully.
```

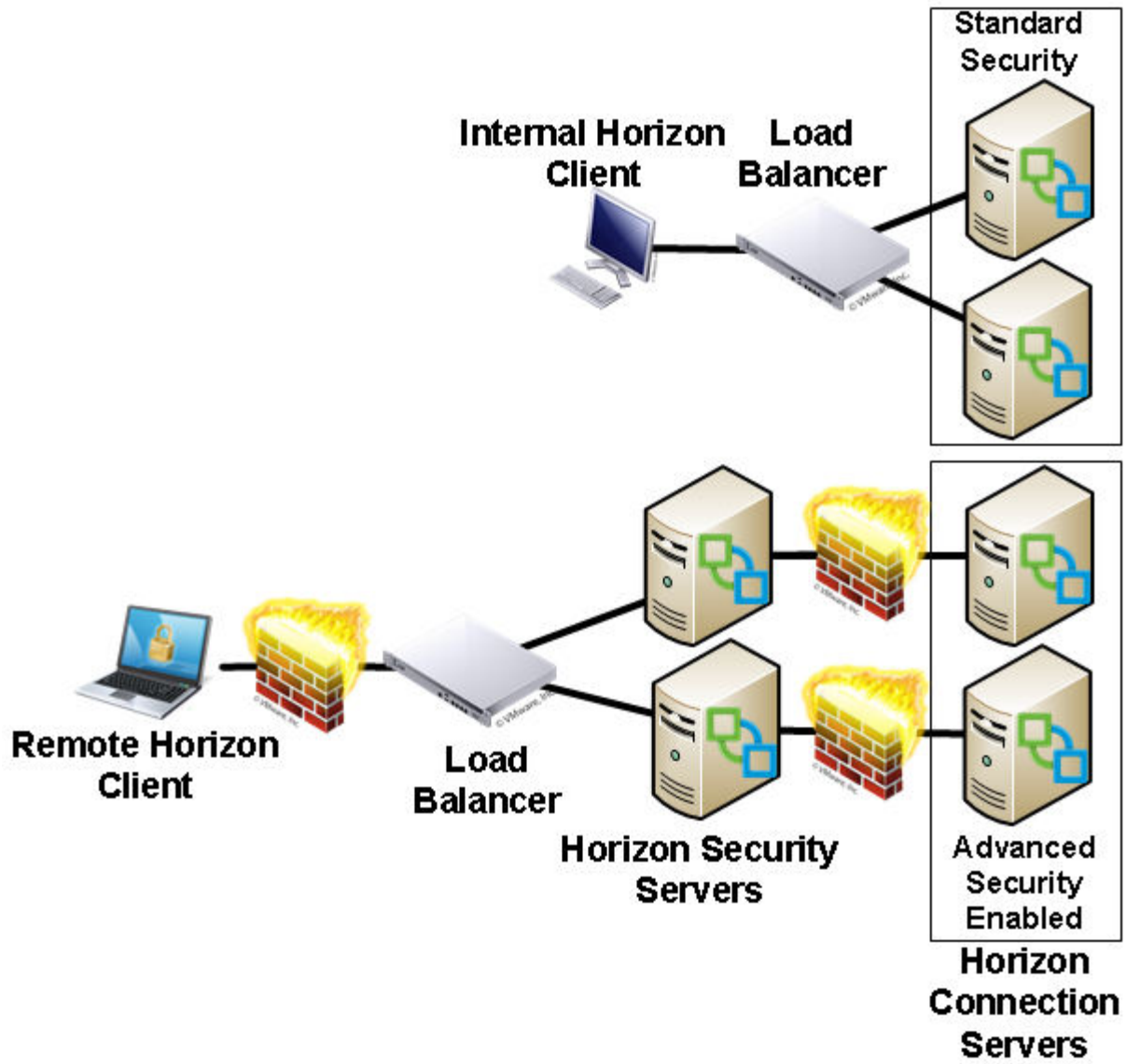
```
c:\Program Files (x86)\VMware\VMware View Composer>_
```

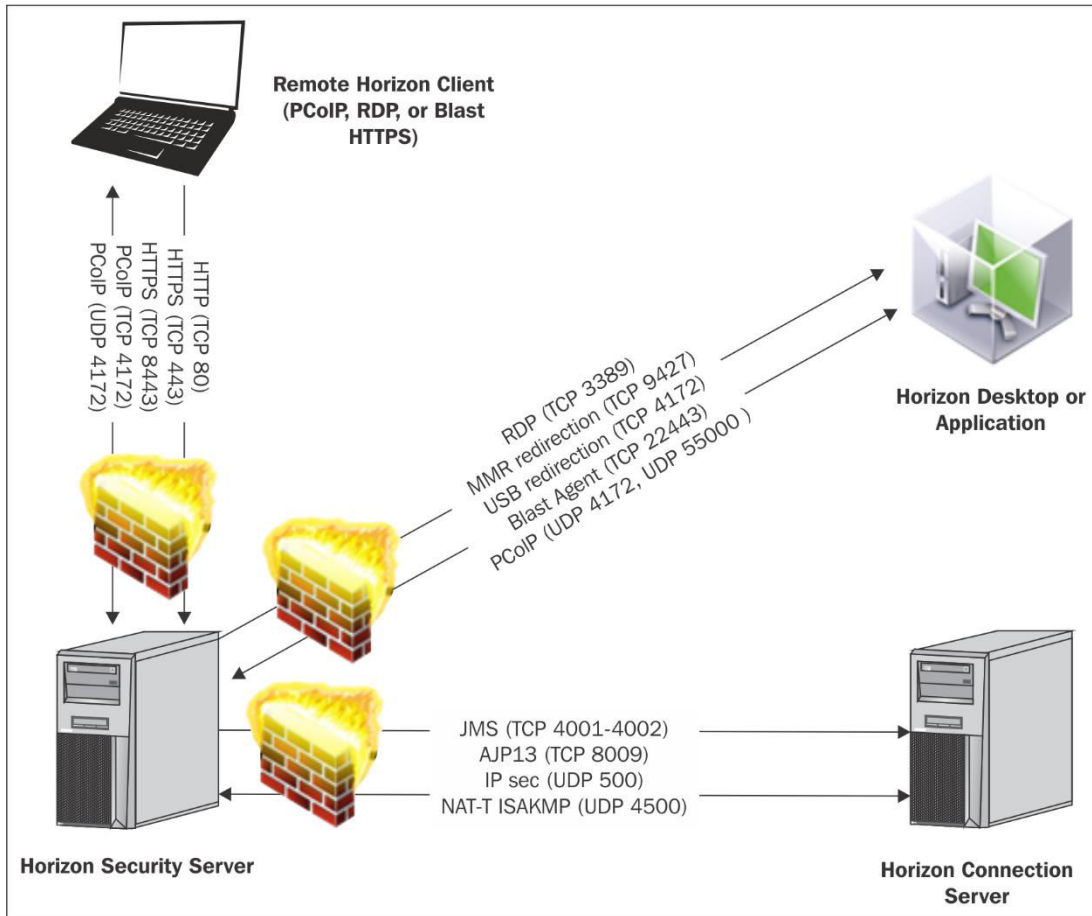
```
c:\Windows\Microsoft.NET\Framework\v4.0.30319>aspnet_regiis.exe -pi "SviKeyContainer" "C:\Temp\keys.xml" -exp
Microsoft (R) ASP.NET RegIIS version 4.0.30319.34209
Administration utility to install and uninstall ASP.NET on the local machine.
Copyright (C) Microsoft Corporation. All rights reserved.
Importing RSA Keys from file..
Succeeded!
```

```
c:\Program Files (x86)\VMware\VMware View Composer>sviconfig -operation=restored
ata -dsname=Composer_Pod1 -username=composer -password>Password123 -backupfilepath="C:\Temp\Backup-20151223101427-viewcomp01_vjason_local.SUI"
```

Chapter 4: Implementing Horizon Security Server







Servers

vCenter Servers Security Servers **Connection Servers**

Enable Disable Edit... Backup Now... **More Commands**

Specify Security Server Pairing Password...

Connection Server	Version	PCoIP Secu...	State	Settings	Last Backup
VIEWCS01	7.0.0-3633490	Installed	Enabled	Smart card autht ✓	5/1/2016 12:00:
VIEWCS02	7.0.0-3633490	Installed	Enabled	Smart card autht ✓	5/1/2016 12:00:

Specify Security Server Pairing Password

This password is a one-time password that allows a security server to be paired with this connection server. It is invalidated when any authentication attempt is made for pairing.

This password will also be invalidated based on the password timeout value below.

 This View environment is configured to enable IPsec for communication between the VIEWCS02 Connection Server and the security server. IPsec requires the Windows Firewall to be turned on for the active profile used for pairing the Connection Server to the Security Server.

Please ensure the Windows Firewall for the active profile on the VIEWCS02 Connection Server is turned on before continuing. You can turn the Windows Firewall on for the active profile from "Windows Firewall with Advanced Security" under "Administrative Tools".

Pairing password:

Confirm password:

Password timeout: Minutes

Installation Options

Select the type of Horizon 7 Connection Server instance you want to install.

Select the type of Horizon 7 Connection Server instance you want to install.

- Horizon 7 Standard Server
- Horizon 7 Replica Server
- Horizon 7 Security Server**
- Horizon 7 Enrollment Server

Perform an install of just the security server components. This is typically used on servers in a DMZ to run an appropriate subset of the full Horizon 7 Connection Server functionality. A Security Server instance must be able to connect to a standard or replica instance server.

Specify what IP protocol version shall be used to configure this Horizon 7 Connection Server instance:

- IPv4**
- IPv6

This server will be configured to choose the IPv4 protocol for establishing all connections.

Paired Horizon 7 Connection Server

Select a Horizon 7 Connection Server that this instance will talk to.

A Horizon 7 Security Server is paired with an existing instance of a Horizon 7 Connection Server. Enter the server name of any existing Horizon 7 Connection Server instance.

Example server: view.internal.vmware.com.

Server:

(hostname or IP address)

Paired Horizon 7 Connection Server Password

Enter a password to pair with the Horizon 7 Connection Server.

A password is required to pair this Security Server with a Connection Server.

First specify the Pairing Password for the Connection Server in Horizon 7 Administrator.

This password is set in Horizon 7 Administrator in "Horizon 7 Configuration" > "Servers". Select the specified Connection Server and go to "More Commands" > "Specify Security Server Pairing Password".

Password:

Horizon 7 Security Server Configuration

Specify Security Server settings.

Enter the External URLs for this Security Server.

The External URLs specified are used by Horizon Clients to establish connections to this Security Server for the secure tunnel, PCoIP and Blast protocols respectively. The URL names and IP addresses must not be load balanced.

Note that the hostnames must be resolvable by the Horizon Client and the PCoIP External URL must contain an IP address.

External URL:

PCoIP External URL:

Blast External URL:

Servers			
vCenter Servers		Security Servers	Connection Servers
Edit...		▼ More Commands	
Security Server	Version	PCoIP Secure Gateway	Connection Server
VIEWSE01	7.0.0-3633490	Installed	VIEWCS02

Servers					
vCenter Servers		Security Servers	Connection Servers		
Enable		Disable	Edit...	Backup Now...	▼ More Commands
Connection Server	Version	1 ▼ PCoIP Secu...	State	Settings	
VIEWCS01	7.0.0-3633490	Installed	Enabled	Smart card auth	
VIEWCS02	7.0.0-3633490	Installed	Enabled	Smart card auth	

Edit Connection Server Settings

General Authentication Backup

Tags
 Tags can be used to restrict which desktop pools can be accessed through this Connection Server.
 Tags: Separate tags with ; or ,

HTTP(S) Secure Tunnel
 Use Secure Tunnel connection to machine [?](#)
 External URL: Example: https://myserver.com:443 [?](#)

PCoIP Secure Gateway
 Use PCoIP Secure Gateway for PCoIP connections to machine
 PCoIP External URL: Example: 10.0.0.1:4172 [?](#)

Blast Secure Gateway
 Use Blast Secure Gateway for HTML access to machine [?](#)
 Blast External URL: Example: https://myserver.com:8443 [?](#)

Edit Security Server - VIEWSE01

Server name:

HTTP(S) Secure Tunnel

External URL:

Example: <https://myserver.com:443> ?

PCoIP Secure Gateway

PCoIP External URL:

Example: 10.0.0.1:4172 ?

Blast Secure Gateway

Blast External URL:

Example: <https://myserver.com:8443> ?

Servers		
vCenter Servers		
Security Servers		
Connection Servers		
Edit...	More Commands	
Prepare for Upgrade or Reinstallation...		
Security Server	Version	PCoIP Secure Gateway
VIEWSE01	7.0.0-3633490	Installed
VIEWSE02	6.2.0-3005368	Installed


Warning

This Security Server is paired with the 'VIEWCS02' Connection Server instance using IPsec. If you continue, the IPsec rules that control communication between the security server and Connection Server instance will be removed. The current IPsec rules must be removed before you can upgrade or reinstall this security server and pair it again with the View Connection Server instance. Continue only if you intend to upgrade or reinstall.


Warning: If you remove the IPsec rules for an active security server, all communication with the security server is lost until you upgrade or reinstall the security server.

Click OK to remove the IPsec rules now. Otherwise, click Cancel.


← → ↻ <https://viewse01.vjason.local>

 **vmware Horizon**

You can connect to your desktop and applications by using the VMware Horizon Client or through the browser. The VMware Horizon Client offers better performance and features.



Install VMware Horizon Client



VMware Horizon HTML Access

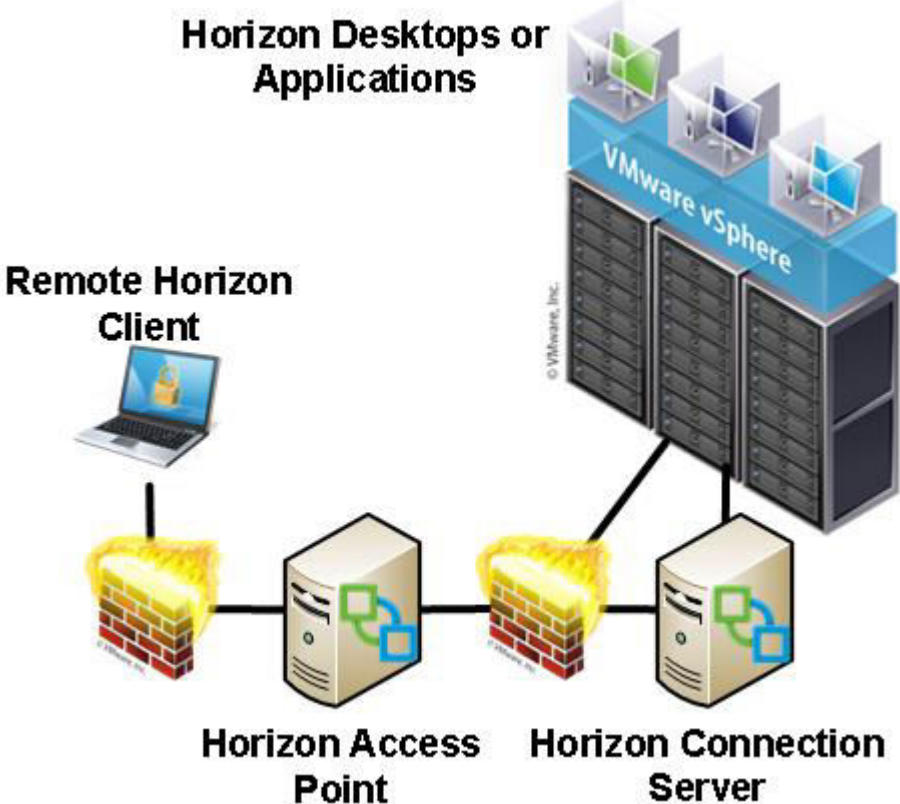
To see the full list of VMware Horizon Clients, click [here](#).
For help with VMware Horizon, click [here](#).

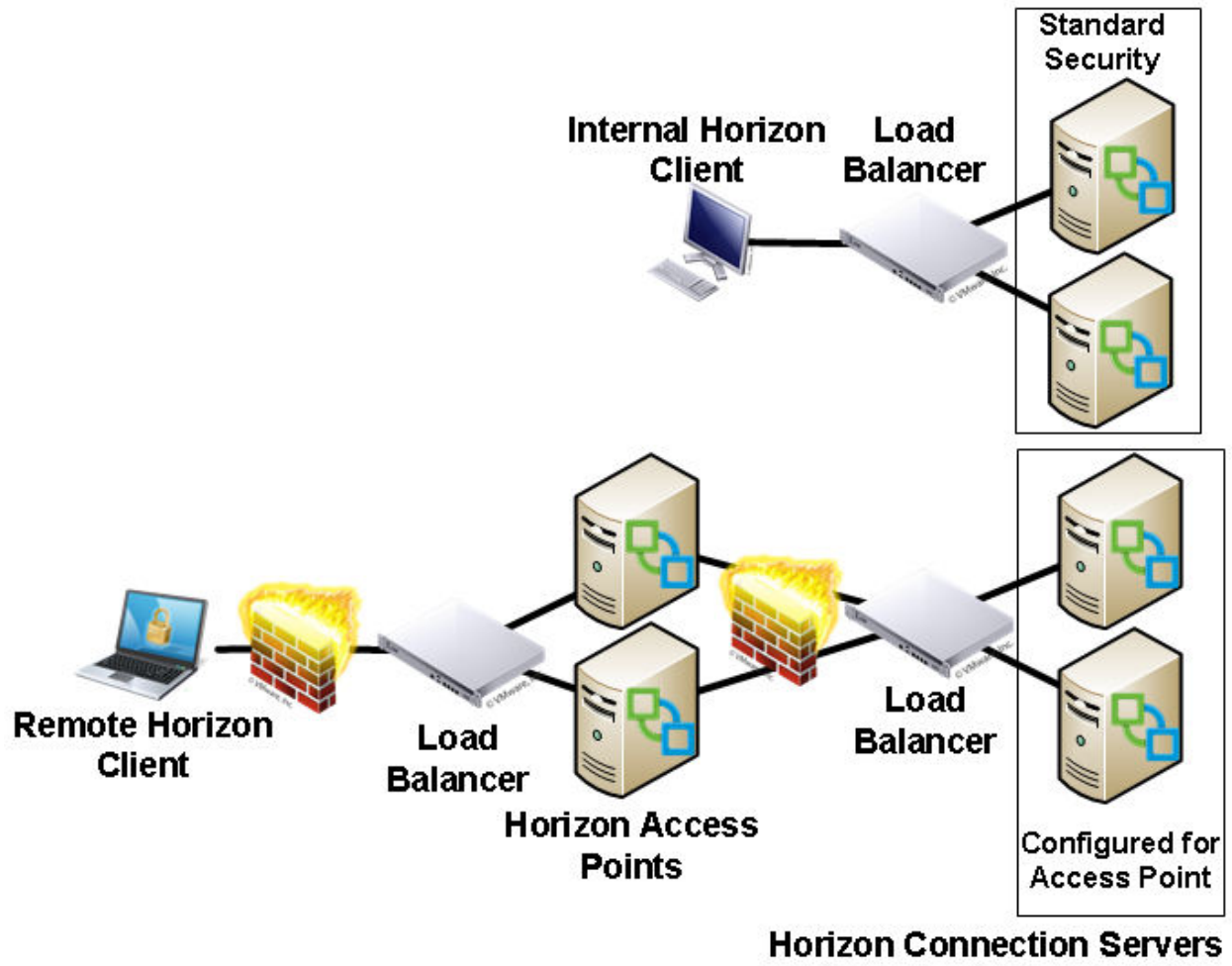
Servers

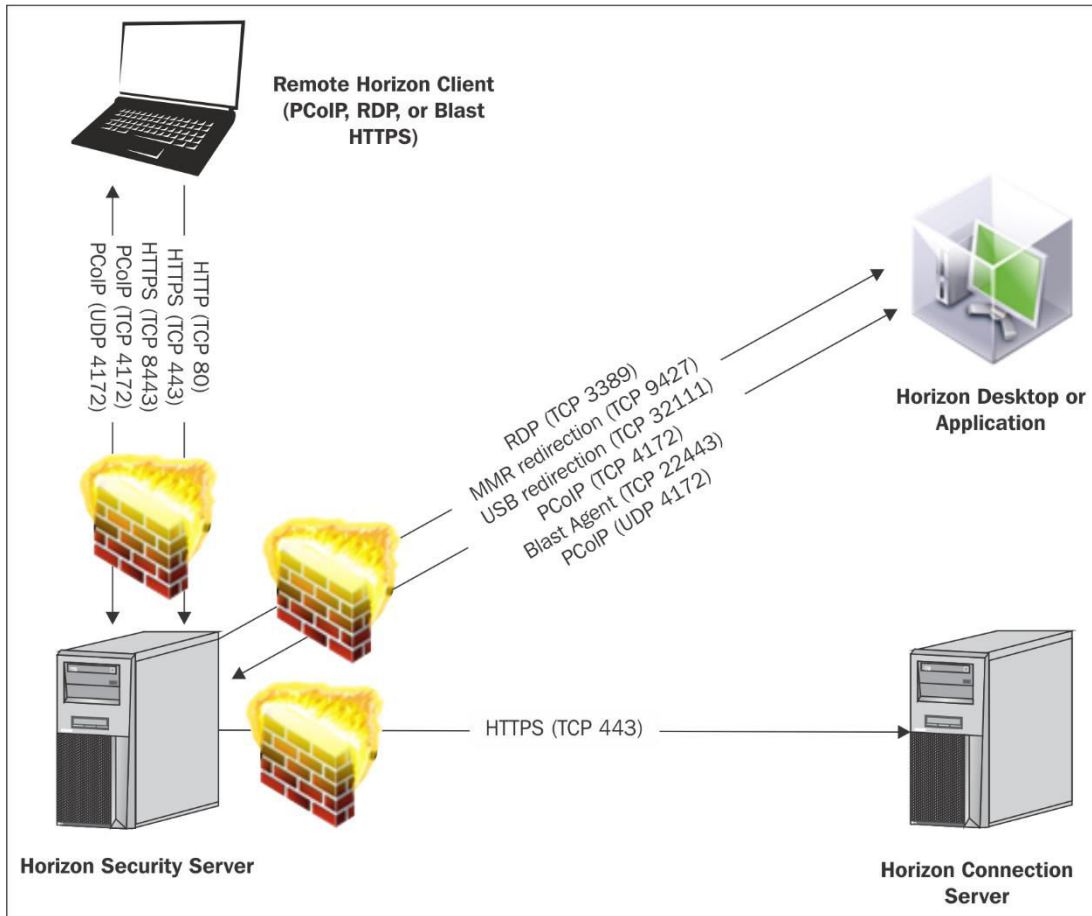
vCenter Servers Security Servers Connection Servers

Security Server	Version	PCoIP Secure Gateway	Connection Server
VIEWSE01	7.0.0-3633490	Installed	VIEWCS02
VIEWSE02	6.2.0-3005368	Installed	VIEWCS02

Chapter 5: Implementing VMware Horizon Access Point







Servers				
vCenter Servers		Security Servers		Connection Servers
<input type="button" value="Enable"/> <input type="button" value="Disable"/> <input type="button" value="Edit..."/> <input type="button" value="Backup Now..."/> <input type="button" value="More Commands"/>				
Connection Server	Version	PCoIP Secure...	State	Settings
VIEWCS03	7.0.0-363349	Installed	Enabled	Secure tunnel connection

General

Authentication

Backup

Tags

Tags can be used to restrict which desktop pools can be accessed through this Connection Server

Tags: Separate tags with ; or ,

HTTP(S) Secure Tunnel

Use Secure Tunnel connection to machine [?](#)

External URL: Example: https://myserver.com:443 [?](#)

PCoIP Secure Gateway

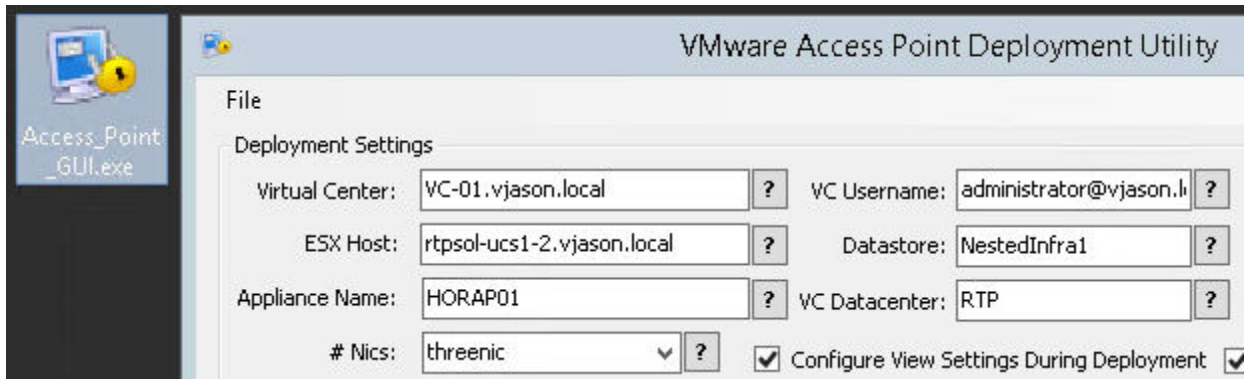
Use PCoIP Secure Gateway for PCoIP connections to machine

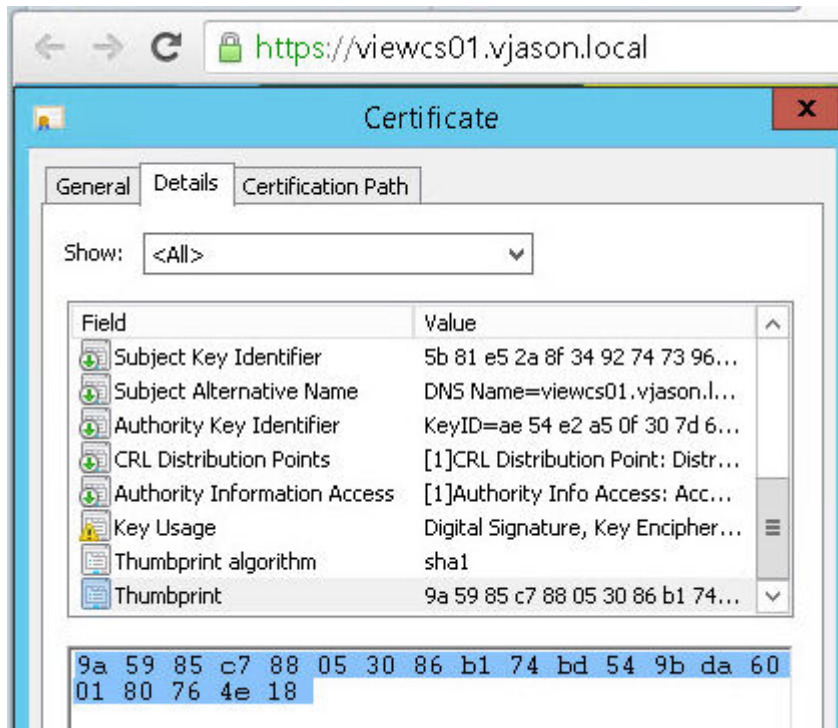
PCoIP External URL: Example: 10.0.0.1:4172 [?](#)

Blast Secure Gateway

Use Blast Secure Gateway for Blast connections to machine [?](#)

Blast External URL: Example: https://myserver.com:8443 [?](#)





Certificate Settings

Private Key: `\\n-----BEGIN RSA PRIVATE KEY-----\\nMIIEowIBAAKCAQEAs6CmGevpwBGzobk0QY1fN1v+CWgBvc` Update Private Key

Certificate Chain: `\\n-----BEGIN CERTIFICATE-----\\nMIIFGDCCBACgAwIBAgITLgAAAD69gQbZJD0m8QABAAAAPJANB` Update Certificates

View Thumbprints: `sha1=9a 59 85 c7 88 05 30 86 b1 74 bd 54 9b da 60 01 80 76 4e 18,91 01 1c 8f c9 18 4a f0 5c 3a db 64 ae 16 de e0 d9 95!`

Deployment Settings

Virtual Center: VC-01.vjason.local ? VC Username: administrator@vjason.l ? VC Password: ***** ?

ESX Host: rtpsol-ucs1-2.vjason.local ? Datastore: NestedInfra1 ? Folder: Horizon ?

Appliance Name: HORAP01 ? VC Datacenter: RTP ? Cluster Name: Infrastructure1 ?

Nics: threenic ? Configure View Settings During Deployment Configure Certificates During Deployment

External IP: 172.16.100.7 ? External Network: VLAN269 ? DNS IP: 172.16.100.5 ?

Management IP: 172.16.100.9 ? Management Network: VLAN269 ? root Password: ***** ?

Backend IP: 172.16.100.8 ? Backend Network: VLAN269 ? admin Password: ***** ?

Path to OVA: D:\7\yuc-access-point-2.5.0.0-3588605_OVF10.ova ... ?

Certificate Settings

Private Key: \n-----BEGIN RSA PRIVATE KEY-----\nMIIEowIBAAKCAQEAs6CmGevpwBGzobk0QY1fN1v+CWgBvc Update Private Key ?

Certificate Chain: \n-----BEGIN CERTIFICATE-----\nMIIFGDCCBACgAwIBAgITLgAAAD69gQbzJD0m8QABAAAAPjANB Update Certificates ?

View Settings

Destination URL: https://172.16.100.51:443 ?

View Thumbprints: sha1=9a 59 85 c7 88 05 30 86 b1 74 bd 54 9b da 60 01 80 76 4e 18,91 01 1c 8f c9 18 4a f0 5c 3a db 64 ae 16 de e0 d9 95 ?

Access Point URL: horizon.vjason.com:443 ? Tunnel Enabled

PCOIP URL: 172.16.100.7:4172 ? PCOIP Enabled

Blast URL: horizon.vjason.com:8443 ? Blast Enabled

Import Settings From XML

Export Current Settings

Deploy Access Point Appliance

Show OVF Tool String

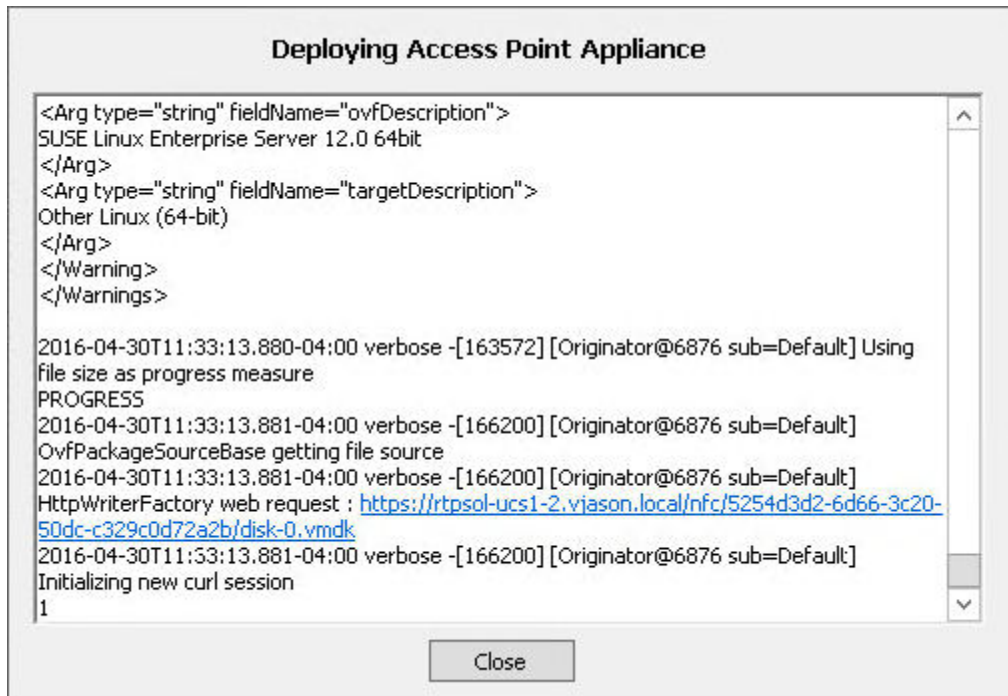
Log Level: verbose

Deploy Access Point Appliance Show OVF Tool String

Log Level: verbose

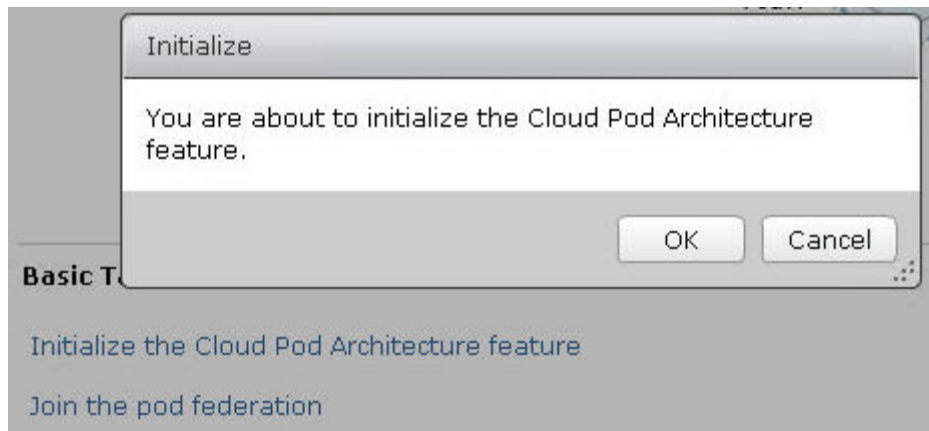
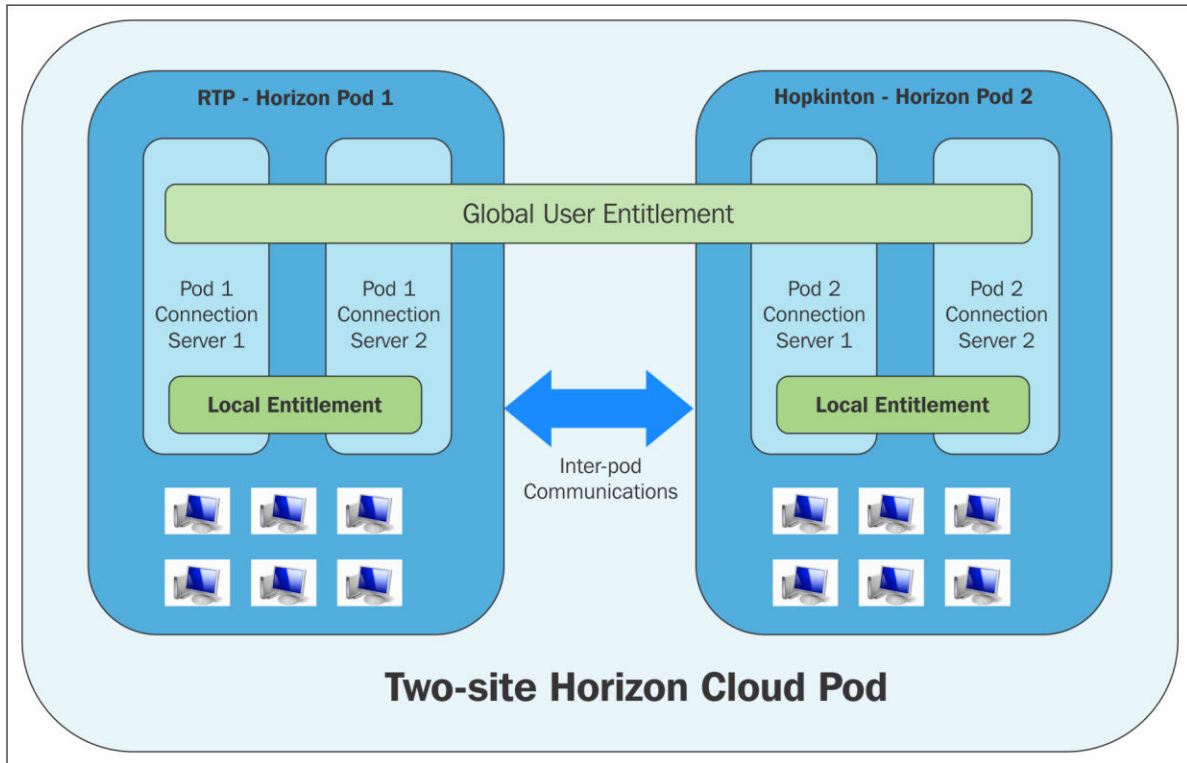
Generated OVF Input String

```
--machineOutput --X.enableHiddenProperties --X.logToConsole --X.logLevel=verbose --powerOff target  
--noSSLVerify --powerOn --overwrite --vmFolder="Horizon" --net:Internet="VLAN269" --  
net:ManagementNetwork="VLAN269" --net:BackendNetwork="VLAN269" -ds="NestedInfra1" -  
dm=Thin --name="HORAP01" --ipAllocationPolicy=fixedPolicy --deploymentOption=threenic --
```



```
C:\Administrator: C:\Windows\System32\cmd.exe
c:\Program Files\VMware\VMware OVF Tool>ovftool.exe --machineOutput --X:enableHiddenProperties --X:logToConsole --X:logLevel=verbose --powerOffTarget --noSSLVerify --powerOn --overwrite --vmFolder="Horizon" --net:Internet="ULAN269" --net:ManagementNetwork="ULAN269" --net:BackendNetwork="ULAN269" -ds="NestedInfra1" -dm=Thin --name="HORAP01" --ipAllocationPolicy=fixedPolicy --deploymentOption=threeNIC --prop:ip0=172.16.100.7 --prop:ip1=172.16.100.9 --prop:ip2=172.16.100.8 --pro
```


Chapter 6: Implementing a Horizon Cloud Pod



Cloud Pod Architecture



Pod Federation

Edit...

Unjoin...

Uninitialize...

Name: Horizon Cloud Pod Federation

Pods

Name	Site	Description
Cluster-VIEWCS03(local)	Default First Site	

Join

To join this pod to the pod federation, you must provide connection information for a View Connection Server instance that belongs to a pod that has been initialized or is already joined to the pod federation.

Connection Server (host name or IP address):

User name (domain\username):

Password:

Cloud Pod Architecture



Pod Federation

Edit...

Unjoin...

Uninitialize...

Name: Horizon Cloud Pod Federation

Pods

Name	Site	Description
Cluster-VIEWCS03	Default First Site	
Cluster-VIEWCS01(local)	Default First Site	

Sites

Add... Edit... Delete

Edit Site

Name:

Description:

Edit...

Pod	Description
Cluster-VIEWCS03	
Cluster-VIEWCS01	

Edit Pod

Name:

Description:

Site:

- Hopkinton
- RTP

Sites

Add... Edit... Delete

Site	Description	Number of Pods
Hopkinton		1
RTP		1

Edit...

Pod	Description	Global Entitlement
Cluster-VIEWCS03		

Updated 4/24/2016 12:30 PM

Sessions 0
 Problem vCenter VMs 0
 Problem RDS Hosts 0
 Events 0
 System Health 13 0 0 0

Inventory

- Dashboard
- Users and Groups**
- Search Sessions
- Catalog
- Resources
 - Farms
 - Machines

Users and Groups

Entitlements Home Site

Add Home Site

Type: Users Groups

Domain: Entire Directory

Name/User name: Contains HOP

Description: Contains

Find

Name	User Name
Horizon_Homesite_HOP	Horizon_Home

Add Home Site

General

Name Horizon_Homesite_HOP

User name Horizon_Homesite_HOP/vjaso

Email

Description

Domain vjason.local

Home Site

Home Site Hopkinton

Users and Groups

Entitlements Home Site

Assignment | Resolution

Add... Edit... Delete... Filter

User Name	Domains	Group	Email	Home Site
Horizon_Homesite_HOP	vjason.local	true		Hopkinton
Horizon_Homesite_RTP	vjason.local	true		RTP

Global Entitlements

Add... Edit... Delete

Add Global Entitlement

Type

- Name and Policies
- Users and Groups
- Ready to Complete

Type

Desktop Entitlement

Application Entitlement

Add Global Entitlement

Type

Name and Policies

Users and Groups

Ready to Complete

Name and Policies

General

Name:

Description:

Policies

User assignment: Floating
 Dedicated

Scope: All sites
 Within site
 Within pod

Use Home Site
 Entitled user must have Home Site

Automatically clean up redundant sessions

Default display protocol:

Allow users to choose protocol:

Allow users to reset their machines

HTML Access

User Assignment Policy

Specifies the type of desktop pool that the global desktop entitlement can contain. A Floating global desktop entitlement can contain only floating desktop pools. A Dedicated global desktop entitlement can contain only dedicated desktop pools.

Scope Policy

Specifies where to look for desktops to satisfy a desktop request from the global desktop entitlement. All sites searches for desktops on any pod in the pod federation, Within site searches for desktops only on pods within the same site, and Within pod searches for desktops only in the pod to which the user is connected.

For global desktop entitlements that contain dedicated desktop pools, the scope policy is applied only the first time a user

Add Global Entitlement

Type

Name and Policies

Users and Groups

Ready to Complete

Add users or groups to the global entitlement

Name	Domains
vjason.local\Horizon_GlobalDTPool_Win10NP	vjason.local

Global Entitlements

Filter

Name	Type	Number of Users ...	Number of Pods	User Assignment
Windows 10 x64	Desktop	1 Group	0	Floating

Windows 10 x64

Summary Local Pools Users and Groups Home Site Override

Add... Delete

Assign Pools - Windows 10 x64

Select Pools to Add ?

Pool ID	Pool Name	Type
HOP-Win10x64-Base1	HOP-Win10x64-Base1	AUTOMATED

Windows 10 x64

Summary Local Pools Users and Groups Home Site Override

Add... Delete

ID	Display Name 1 ▼	Type	Sessions
HOP-Win10x64-Base1	HOP-Win10x64-Base1	AUTOMATED	0

VMware Horizon Client

viewcs03.vjason.local



Windows 10 x64



Internet Explorer

Add Global Entitlement

Type

Name and Policies

Users and Groups

Ready to Complete

Name and Policies

General

Name:

Description:

Policies

Scope: All sites
 Within site
 Within pod

Use Home Site
 Entitled user must have Home Site

Automatically clean up redundant sessions

Default display protocol:

Allow users to choose protocol:

HTML Access

Scope Policy

Specifies where to look for applications to satisfy a request from the global application entitlement. All sites searches for applications on any pod in the pod federation, Within site searches for applications only on pods within the same site, and Within pod searches for applications only in the pod to which the user is connected.

Home Site Policy

Enabling this policy causes View to look for applications in the user's Home Site. If the user does not have a Home Site and your configuration does not require a Home Site, the site to which the user is currently connected is assumed to be the Home

Internet Explorer

Summary Local Pools Users and Groups Home Site Override

Add... Delete

Assign Pools - Internet Explorer

Select Pools to Add ?

Pool ID	Pool Name	Type
ieexplore	Internet Explorer	

Windows 10 x64

Summary Local Pools Users and Groups Home Site Override

General

Edit...

Name: Windows 10 x64

Description:

Number of Pods: 2

Windows 10 x64

Summary Local Pools Users and Groups Home Site Override

Add... Edit... Remove...

Name	Domains	Home Site
Erik Lehnsherr	vjason.local	Hopkinton

Edit Global Entitlement

General

Name:

Description:

Policies

Scope: All sites
 Within site
 Within pod

Use Home Site
 Entitled user must have Home Site

Automatically clean up redundant sessions

Default display protocol:

HTML Access

Users and Groups

Entitlements **Home Site**

[Assignment](#) | [Resolution](#)

Specify the user whose effective home site you want to display.

Users and Groups

Entitlements **Home Site**

[Assignment](#) | [Resolution](#)

Specify the user whose effective home site you want to display.

vjason.local\Erik

Displaying the result for user:vjason.local\Erik

Entitlement	Home Site Resolution
▼ Windows 10 x64	RTP (Direct)
	Hopkinton (Default)
	Hopkinton (via Horizon_Homesite_HOP)
▼ Internet Explorer	Hopkinton (Default)
	Hopkinton (via Horizon_Homesite_HOP)

Sessions

All | Desktop | Applications

Filter

User	Type	DNS Name	Client ID	Security ...	Pool or Farm
vjason.local\Charles	Desktop	rtpw10x643.vjason.local	b96f69d2a02	VIEWCS03	RTP-Win10x64-Base1

Updated 4/24/2016 1:14 PM

Sessions 0

Problem vCenter VMs 0

Problem RDS Hosts 0

Events 0

System Health 13 0 0 0

Inventory

- Dashboard
- Users and Groups
- Search Sessions

Search Sessions

Brokering Pod Cluster-VIEWCS03

User

Pod

Brokering Pod

Search Sessions

Brokering Pod ▼ Cluster-VIEWCS03 ▼ Search

Total Sessions Found:1


Disconnect Session... Logoff Session... Reset Virtual Machine Send Message...

Filter ▼ Find Clear

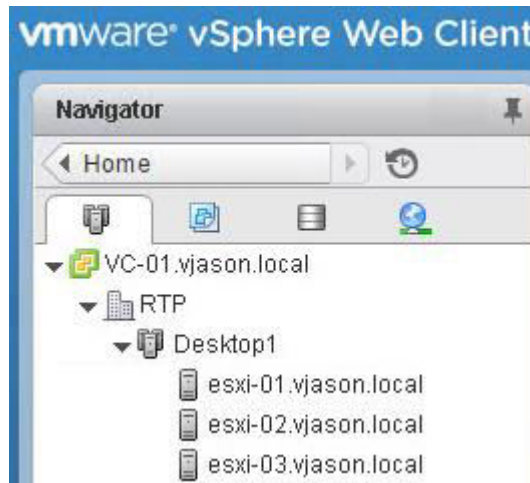
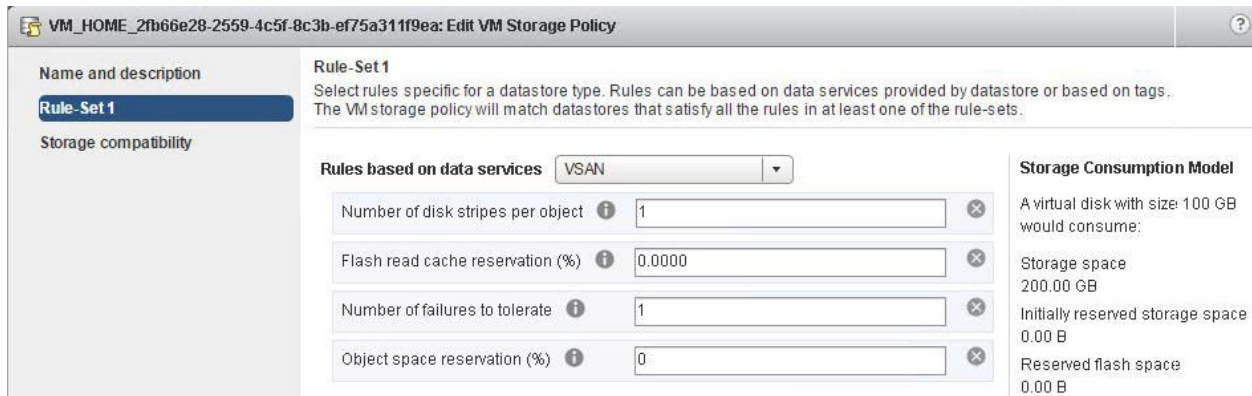
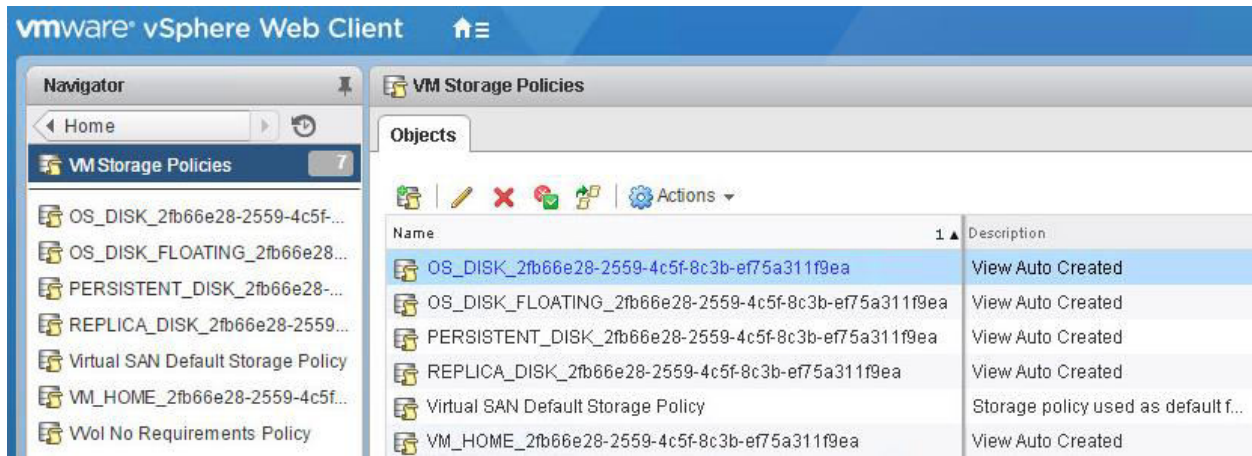
User	Type	Machine	Pool or Farm	Pod	Brokering Pod	Site
vjason.local\Charles	DESKTOP	RTPW10x643	RTP-Win10x64-Base1	Cluster-VIEWCS01	Cluster-VIEWCS03	RTP

Dashboard

System Health

- ▶ Local Pod (Cluster-VIEWCS01)
- ▼ Remote Pods
 - ▼  Cluster-VIEWCS03
 - ▼  Connection Servers
 -  VIEWCS03

Chapter 7: Using VMware Virtual SAN with Horizon



vmware® vSphere Web Client ⌵

Navigator

Home

- VC-01.vjason.local
 - RTP
 - Desktop1
 - esxi-01.vjason.local**
 - esxi-02.vjason.local
 - esxi-03.vjason.local

esxi-01.vjason.local Actions ▾

Getting Started Summary Monitor **Manage** Related Objects

Settings **Networking** Storage Alarm Definitions Tags Permissions

Virtual switches

VMkernel adapters

Physical adapters

TCP/IP configuration

VMkernel adapters

Device	Network Label
vmk0	Management Netw...
vmk1	NFS

esxi-01.vjason.local - Add Networking

- ✓ 1 Select connection type
- ✓ 2 Select target device
- 3 Connection settings
 - 3a Port properties**
 - 3b IPv4 settings
- 4 Ready to complete

Port properties
Specify VMkernel port settings.

VMkernel port settings

Network label:

VLAN ID:

IP settings:

TCP/IP stack:

Available services

Enable services:

- vMotion traffic
- Provisioning traffic
- Fault Tolerance logging
- Management traffic
- vSphere Replication traffic
- vSphere Replication NFC traffic
- Virtual SAN traffic

vmware® vSphere Web Client

esxi-01.vjason.local

Getting Started Summary Monitor **Manage** Related Objects

Settings **Networking** Storage Alarm Definitions Tags Permissions

Virtual switches
VMkernel adapters
 Physical adapters
 TCP/IP configuration
 Advanced

VMkernel adapters

Device	Network Label
vmk0	Management Netw...
vmk1	NFS
vmk2	VSAN

vmware® vSphere Web Client

Desktop1

Getting Started Summary Monitor **Manage** Related Objects

Settings **Scheduled Tasks** Alarm Definitions Tags Permissions Update Manager

Virtual SAN is Turned OFF [Configure...](#)

Services
 vSphere DRS
 vSphere HA
 Virtual SAN
General
 Disk Management
 Fault Domains & Stretched Cluster
 Health and Performance

Desktop1 - Configure Virtual SAN

1 Select VSAN capabilities

Select VSAN capabilities
 Select how you want your Virtual SAN cluster to behave.

Disk Claiming

Add disks to storage:

Requires manual claiming of any new disks on the included hosts to the shared storage.

Deduplication and Compression

Enable
 Deduplication and compression will improve the total cost of ownership by reducing the data stored on your physical disks. Deduplication and compression only works for all-flash disk groups. Creating hybrid disk groups is not allowed when Deduplication and compression is turned on.

Allow Reduced Redundancy ⓘ

Fault Domains and Stretched Cluster

Desktop1 Actions ▾

Getting Started Summary Monitor **Manage** Related Objects

Settings Scheduled Tasks Alarm Definitions Tags Permissions Update Manager

◀
 ▾ Services
 vSphere DRS
 vSphere HA
 ▾ Virtual SAN
 General
 Disk Management
 Fault Domains & Stretched Cluster
 Health and Performance

Virtual SAN is Turned ON Edit...

Add disks to storage	Manual
Deduplication and compression	Enabled

On-disk Format Version Upgrade

Disk format version	3.0 (latest)
Disks with outdated version	✔ 0 of 6

Internet Connectivity Edit...

Status	Disabled
--------	----------

◀

▾ Services
 vSphere DRS
 vSphere HA
 ▾ Virtual SAN
 General
 Disk Management
 Fault Domains & Stretched Cluster
 Health and Performance
 ▾ Configuration
 General
 Licensing
 VMware EVC
 VM/Host Groups
 VM/Host Rules

Disk Groups Disk Groups

Disk Group

- esxi-01.vjason.local
 - Disk group (0000000000766d686261313a313a30)
- esxi-02.vjason.local
 - Disk group (0000000000766d686261313a313a30)
- esxi-03.vjason.local
 - Disk group (0000000000766d686261313a313a30)

6 items

esxi-01.vjason.local: Disks

All Actions ▾ Show: In use (2)

Name
Local VMware Disk (mpx.vmhba1:C0:T1:L0)
Local VMware Disk (mpx.vmhba1:C0:T2:L0)

Add Desktop Pool - AppVolumes-W10

Desktop Pool Definition

- [Type](#)
- [User Assignment](#)
- [vCenter Server](#)

Setting

- [Desktop Pool Identification](#)
- [Desktop Pool Settings](#)
- [Provisioning Settings](#)
- [View Composer Disks](#)
- [Storage Optimization](#)
- [vCenter Settings](#)

Storage Optimization

Storage Policy Management

- Use VMware Virtual SAN
- Do not use VMware Virtual SAN
- Select separate datastores for replica and OS disks
 - Virtual Volumes (VVOL) and fast NFS clones (VAAI) will be unavailable if the replica disks and OS disks are stored on separate datastores.

Desktop1 Actions ▾

Getting Started Summary Monitor Manage **Related Objects**

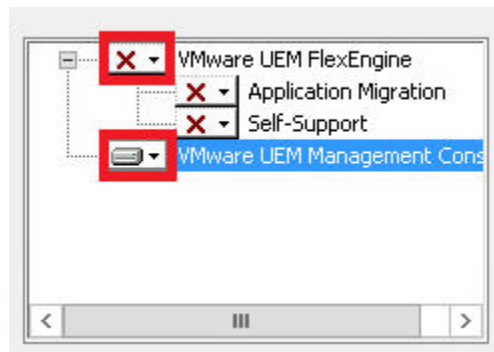
◀ Top Level Objects Hosts Virtual Machines vApps **Datastores**

Actions ▾

Name	Status	Type
Desktop1-VSAN1	Normal	vsan

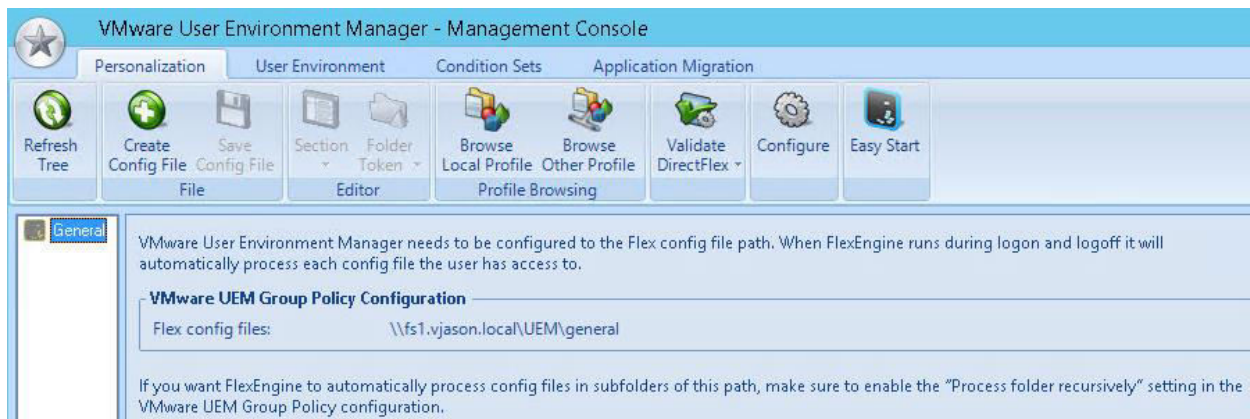
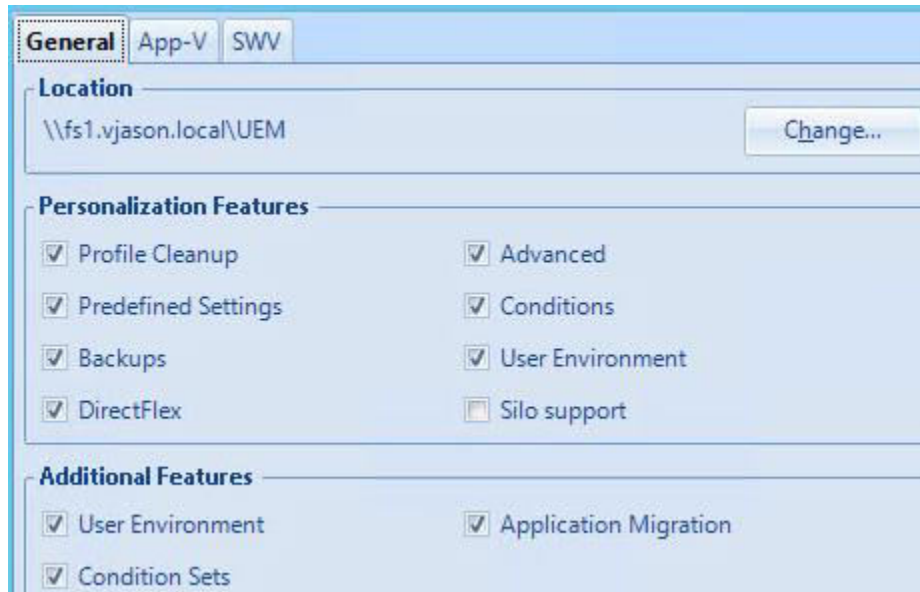
Disk Model/Serial Number	Claim For	Drive Type	Total Capacity
<ul style="list-style-type: none"> VMware Virtual disk , 150.00 GB disks 	Capacity tier	Flash	450.00 GB
<ul style="list-style-type: none"> Local VMware Disk (mpx.vmhba1:C0:T... 	Capacity tier	Flash	150.00 GB
<ul style="list-style-type: none"> Local VMware Disk (mpx.vmhba1:C0:T... 	Capacity tier	Flash	150.00 GB
<ul style="list-style-type: none"> Local VMware Disk (mpx.vmhba1:C0:T... 	Capacity tier	Flash	150.00 GB
<ul style="list-style-type: none"> VMware Virtual disk , 40.00 GB disks 	Cache tier	Flash	120.00 GB
<ul style="list-style-type: none"> Local VMware Disk (mpx.vmhba1:C0:T... 	Cache tier	Flash	40.00 GB
<ul style="list-style-type: none"> Local VMware Disk (mpx.vmhba1:C0:T... 	Cache tier	Flash	40.00 GB
<ul style="list-style-type: none"> Local VMware Disk (mpx.vmhba1:C0:T... 	Cache tier	Flash	40.00 GB

Chapter 8: Implementing VMware User Environment Manager



Select the share where the UEM configuration will be stored.

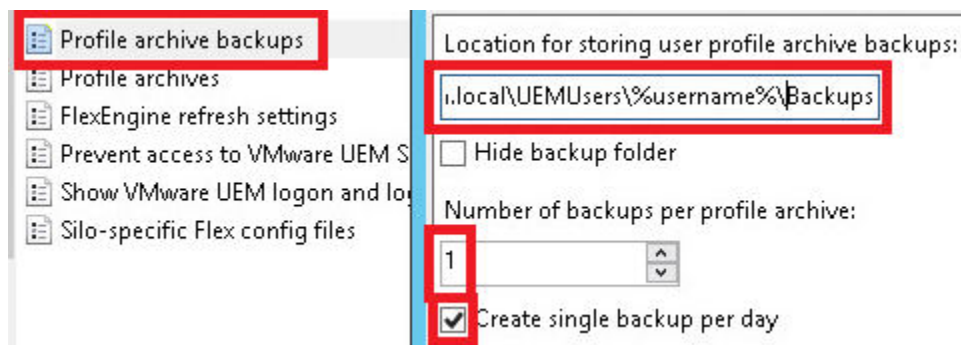
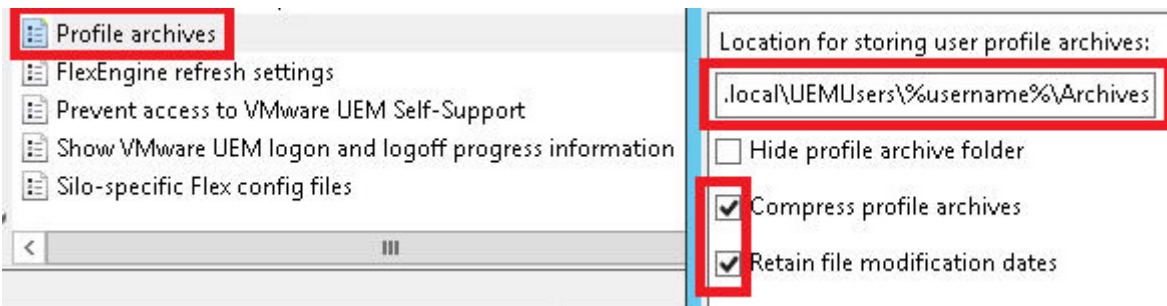
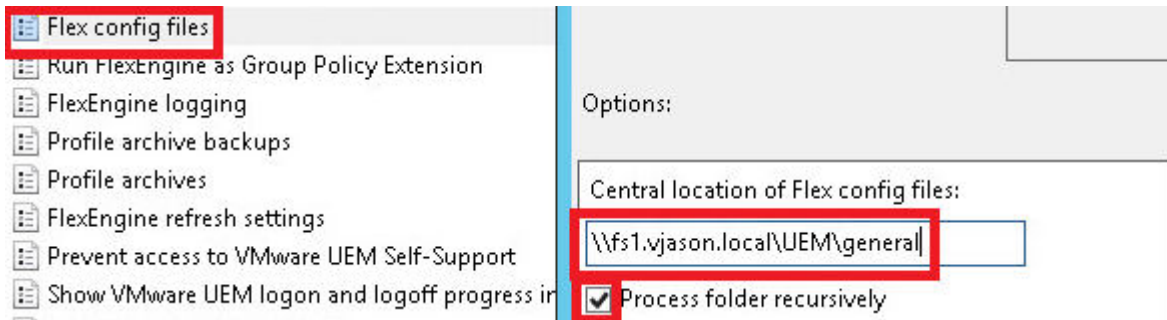
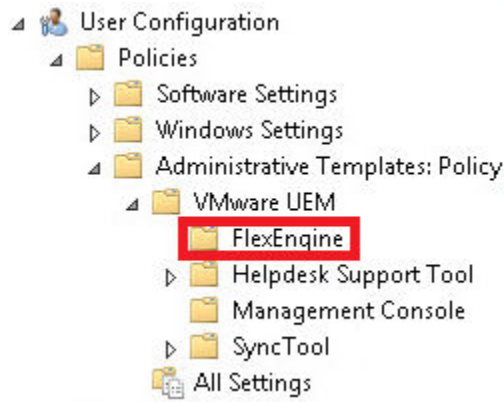
Location: \\fs1.vjason.local\UEM

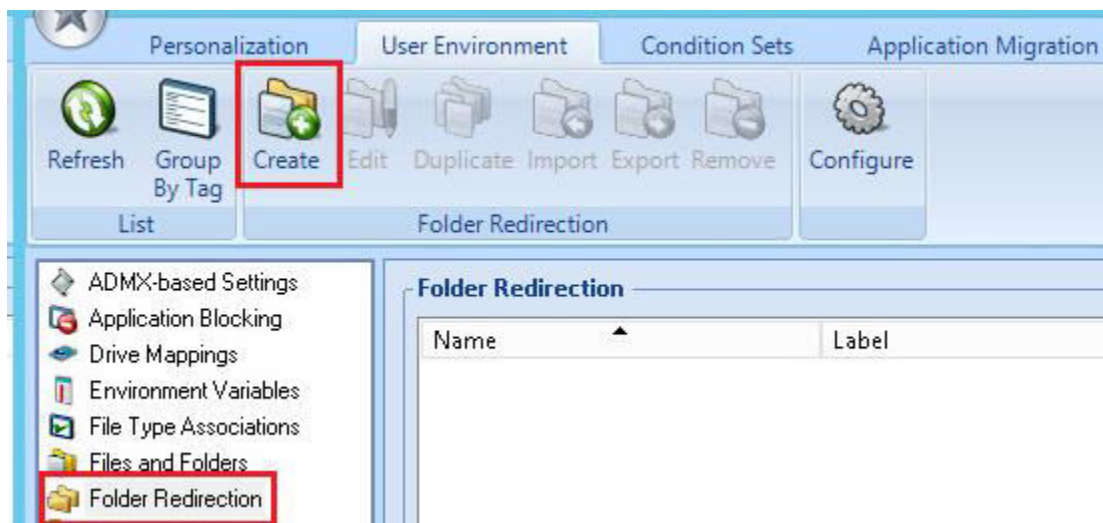
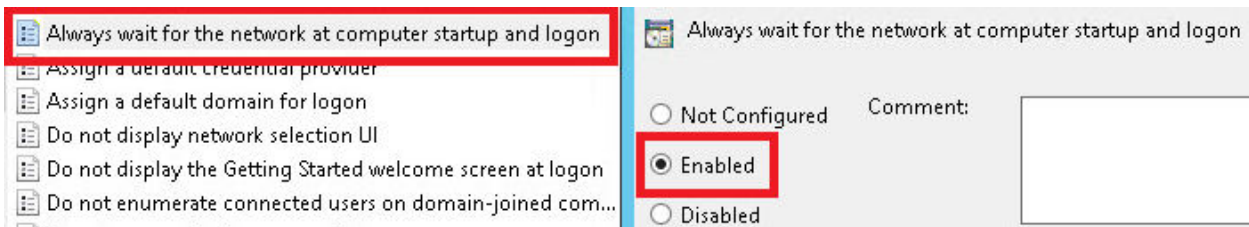
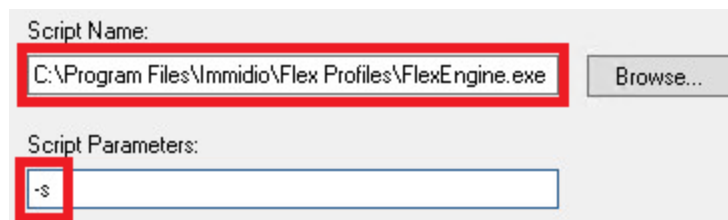
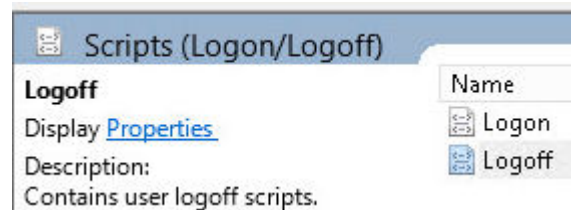
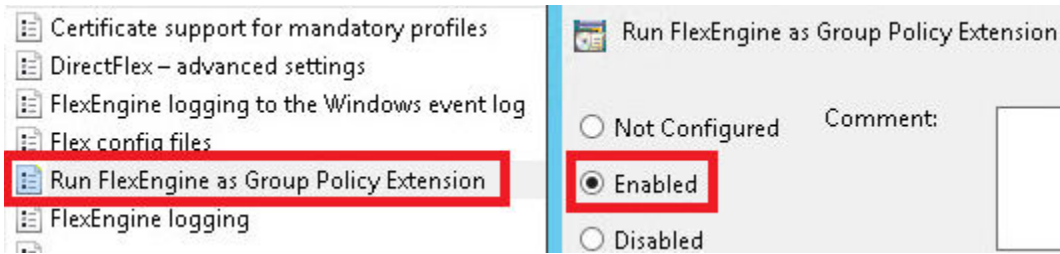


Easy Start installs a default set of UEM configuration items, so you can quickly get a feel for the Flex+ functionality. You can use these items as is, delete some of them, or just use this as a starting point for your own implementation.

In addition to the default items, install UEM configuration items for the following Microsoft Office versions:

- Microsoft Office 2003
- Microsoft Office 2007
- Microsoft Office 2010
- Microsoft Office 2013
- Microsoft Office 2016





Settings | Conditions | Comments

General Settings

Name:

Label:

Tag:

Folder Redirection Settings

Remote path:

Folders to redirect:

- Documents
- Downloads
- Music
- Pictures
- Videos
- Desktop
- Favorites
- Programs Menu
- Roaming AppData

WARNING: Redirecting the following highly active profile folders might degrade filesystem and/or network performance.

Desktop

Favorites

Programs Menu

Roaming AppData

Use path:

VMware User Environment Manager - Management Console

Personalization | **User Environment** | Condition Sets | Application Migration

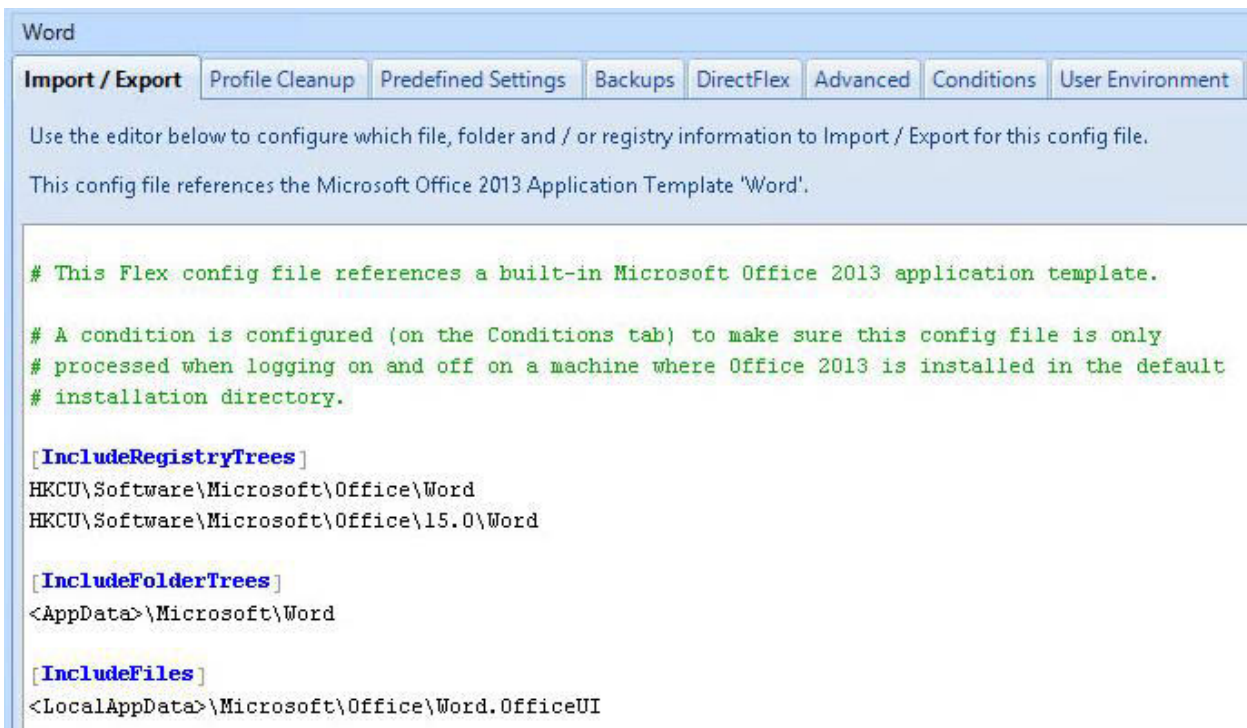
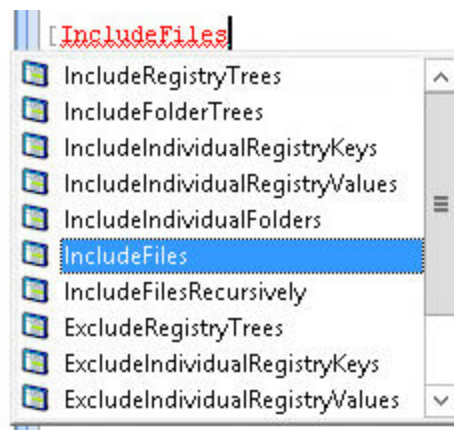
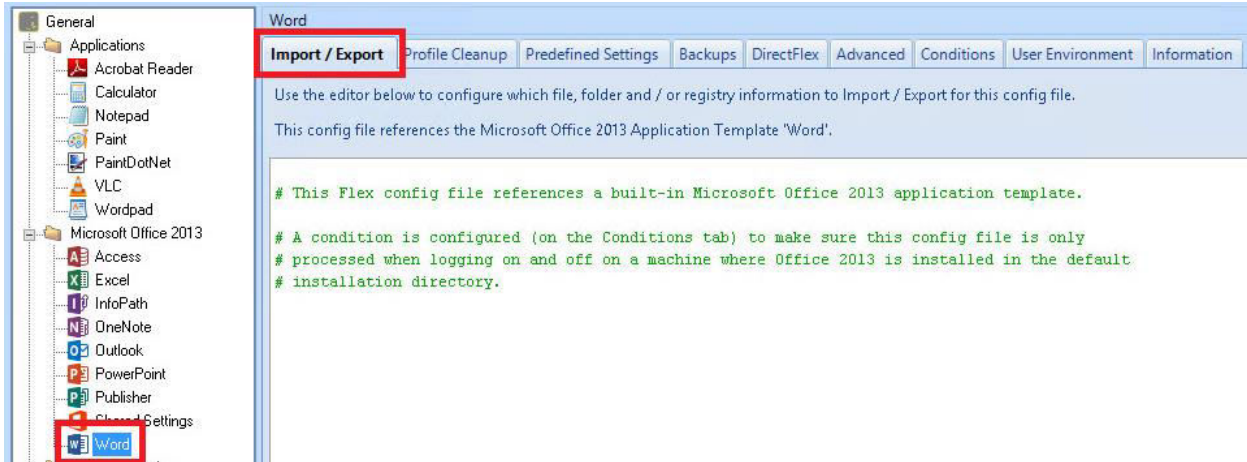
Refresh | Group By Tag | Create | Edit | Duplicate | Import | Export | Remove | Configure | Manage Templates



















List | ADMX-based Settings | ADMX

ADMX-based Settings

Name	Label

ADMX-based Settings
 Drive Mappings
 Environment Variables
 File Type Associations



-  ADMX-based Settings
-  Application Blocking
-  Drive Mappings
-  Environment Variables
-  File Type Associations
-  Files and Folders
-  Folder Redirection
-  Horizon Policies
-  Logon Tasks
-  Logoff Tasks
-  Printer Mappings
-  Registry Settings
-  Shortcuts
-  Triggered Tasks
-  Windows Settings
 -  Display Language
 -  Hide Drives
 -  Policy Settings

Acrobat Reader 11 - Shortcut

Settings Conditions Comments

General Settings

Name: Acrobat Reader 11

Label: Creates Acrobat Reader 11 shortcut if it is installed in the default directo

Tag:

Shortcut Settings

Shortcut name: Acrobat Reader 11 (created by VMware UEM)

Target: 32 %ProgramFiles%\Adobe\Reader 11.0\Rea Browse...

Arguments:

Start in: Browse...

Run: Normal window

Comment:

Icon path: 32 %ProgramFiles%\Adobe\Reader 11.0\Rea Browse...

Icon index: 0

Destination: Desktop
 Quick Launch bar (for Windows XP, 2003, Vista and 2008)
 Programs folder Created by VMware UEM

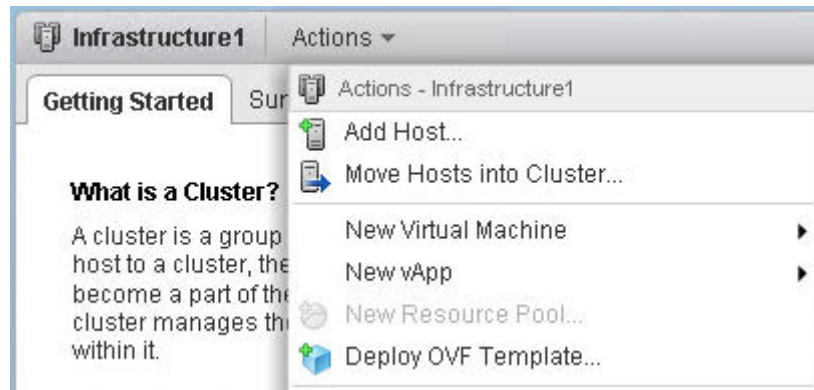
Skip if shortcut already exists

Run once

Undo at logoff

Run asynchronously

Chapter 9: Implementing VMware App Volumes



▼ Networking Properties	6 settings
Default Gateway	The default gateway address for this VM. Leave blank if DHCP is desired. <input type="text" value="172.16.100.1"/>
Domain Name	The domain name of this VM. Leave blank if DHCP is desired. <input type="text" value="vjason.local"/>
Domain Search Path	The domain search path (comma or space separated domain names) for this VM. Leave blank if DHCP is desired. <input type="text" value="vjason.local"/>
Domain Name Servers	The domain name server IP Addresses for this VM (comma separated). Leave blank if DHCP is desired. <input type="text" value="172.16.100.6"/>
Network 1 IP Address	The IP address for this interface. Leave blank if DHCP is desired. <input type="text" value="172.16.100.30"/>
Network 1 Netmask	The netmask or prefix for this interface. Leave blank if DHCP is desired. <input type="text" value="255.255.224.0"/>

Register Active Directory

* NETBIOS Name:

* DNS Domain Name:

* Protocol: LDAP LDAPS

* Bind Username:



* Bind Password: 

Add Super Administrator

User Group:

 Active Directory Search

Selected User Group:

 AppVolumes_Admins 

New vCenter

* Name:

* Hostname:

City Name:
Raleigh

* vCenter Username:

* vCenter Password:

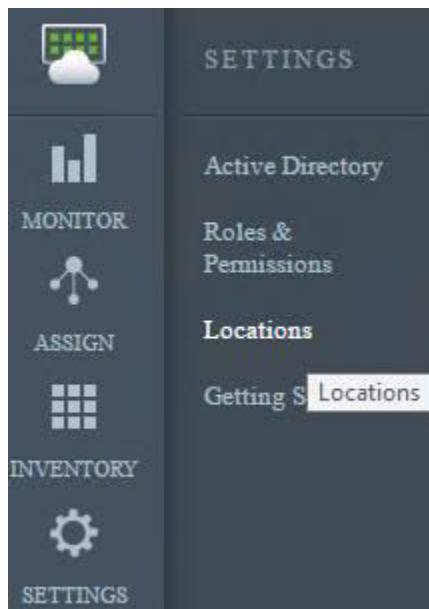
* ESX Username:

* ESX Password:

AV Managers:

* Appstack Datastore Prefix:

* Writable Datastore Prefix:



Locations

AV MANAGER | VCENTER

New Edit Delete

<input checked="" type="checkbox"/>	Name	Path
<input checked="" type="checkbox"/>	AppVolumes-https://localhost...	localhost:3443

Edit AV Manager

* Name: RTPAPPV01

* Path: rtpappv01.vjason.local:3443

Destination vCenters: VC-01 x

Locations

AV MANAGER | VCENTER

New Edit Delete

<input type="checkbox"/>	Name ▲	Path
<input type="checkbox"/>	RTPAPPV01	rtpappv01.vjason.local:3443

New File Share

* Name:

* Type:

* Source Path:

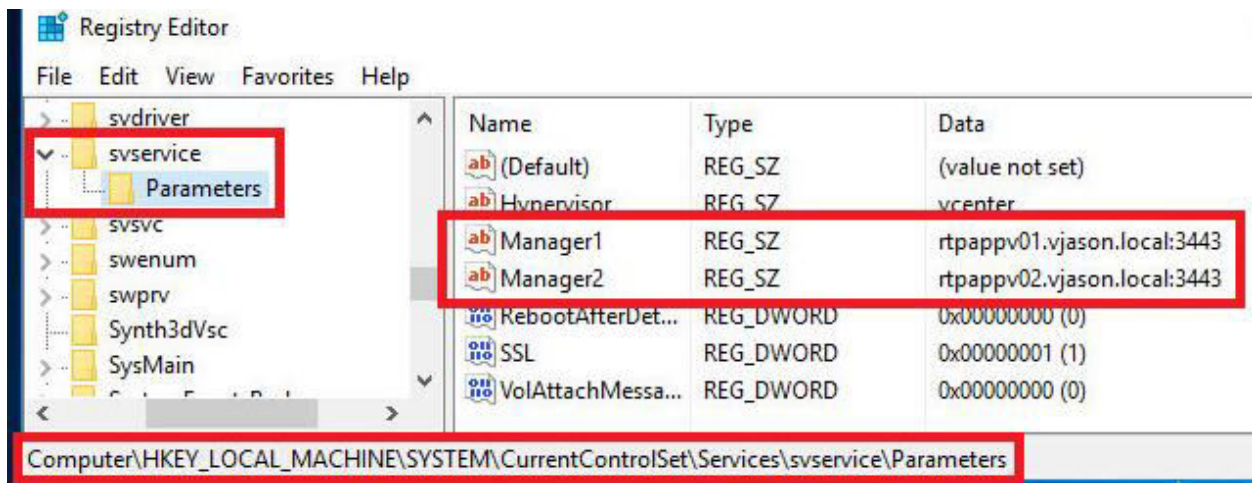
* Destination vCenters:

New AV Manager

* Name:

* Path:

Destination vCenters:



```
c:\Program Files (x86)\VMware\AppCapture>AppCapture.exe /n NotepadPlus
```

```
VMware AppCapture Program  
Version 3.0.0.340 (with App Volumes Agent v3.0.0.0)  
Copyright (c) 2016 VMware, Inc.
```

```
INFO : creating output disk (copying 100 % done)  
INFO : preparing output virtual disk for capture  
INFO : attaching virtual disk for capture  
INFO : disk attachment complete  
INFO : waiting to become capture-ready: 8
```

Ready to capture application(s):

Run installers to install applications. If an installer requires a machine reboot, allow the reboot to proceed. When the installation is complete, hit ENTER at the prompt below, to begin reboot and finalize capture.

Use "CTRL+C" to cancel and begin a new session.

After all application installs are complete, hit ENTER here :

After all application installs are complete, hit ENTER here :

System will now reboot to finalize capture. Hit ENTER again to confirm :

Virtual disks with captured application(s) are now available at:


```
C:\ProgramData\VMware\AppCapture\appvhds\NotepadPlus.vhd  
C:\ProgramData\VMware\AppCapture\appvhds\NotepadPlus.vmdk  
-----
```

New Edit Remove ...

Sync Now

<input checked="" type="checkbox"/>	Status	Name
<input checked="" type="checkbox"/>	●	VC-01 AppStack Share

Applications

<input type="checkbox"/>	Status	Application	OS
<input type="checkbox"/>	●	 Notepad++(6.8.3)	Windows 10 (x64)

```
c:\Program Files (x86)\VMware\AppCapture>AppCapture.exe /n NotepadPlus-1 /s "C:\NotepadPlus\NotepadPlus.vhd"
```

Ready to capture application(s):

Run installers to install applications. If an installer requires a machine reboot, allow the reboot to proceed. When the installation is complete, hit ENTER at the prompt below, to begin reboot and finalize capture.

Use "CTRL+C" to cancel and begin a new session.

After all application installs are complete, hit ENTER here :



Virtual disks with captured application(s) are now available at:

C:\ProgramData\VMware\AppCapture\appvhds\NotepadPlus-1.vhd
C:\ProgramData\VMware\AppCapture\appvhds\NotepadPlus-1.vmdk

NotepadPlus-1.json - Notepad

```
"apps" : [  
  {  
    "name" : "Notepad++",  
    "version" : "6.8.3-Rev2",  
    "publisher" : "Notepad++ Team",
```

Applications

<input type="checkbox"/>	Status	Application	OS
<input type="checkbox"/>	●	 Notepad++(6.8.3)	Windows 10 (x64)
<input type="checkbox"/>	●	 Notepad++(6.8.3-Rev2)	Windows 10 (x64)

New Applications Assignment

1. DEFINITION 2. APPLICATIONS 3. USERS

* Assignment Name:

* OS:


Computer Name Prefix:

Writable Volume: NO

New Applications Assignment

1. DEFINITION 2. APPLICATIONS 3.

Application

 Notepad++(6.8.3) Notepad++ Team

Assignments

<input type="checkbox"/>	Status	Name	Type	Capacity	OS	Users
<input type="checkbox"/>	●	NotepadPlus	Native Application	NA	Windows 10 (x64)	1

Assignments

<input checked="" type="checkbox"/>	Status	Name
<input checked="" type="checkbox"/>	●	NotepadPlus

New Applications Assignment

1. DEFINITION 2. APPLICATIONS 3. USERS

* Assignment Name:

* OS:

Computer Name Prefix:

Writable Volume: YES

1. DEFINITION 2. APPLICATIONS 3. USERS

* Assignment Name:

* OS:

Computer Name Prefix:

Writable Volume: NO



Hard Disk Drives (2)

Local Disk (C:)
 14.3 GB free of 23.8 GB

SystemDisposab...
 2.96 GB free of 3.99 GB

Devices with Removable S...

Floppy Disk Drive (A:)

DVD Drive (D:)

AppVol2 Actions

Getting Started **Summary** Monitor Manage Re...

Download Remote Console Host: esx

VM Hardware

- ▶ CPU 1 CPU(s), 2501 MHz used
- ▶ Memory 1024 MB, 1003 MB memory
- ▶ Hard disk 1 4.00 GB
- ▶ Hard disk 2 20.00 MB
- ▶ Other hard disks 5 hard disks [\(view disks\)](#)

AppVol2 - View Hard Disks

- ▶ Hard disk 1 4.00 GB
- ▶ Hard disk 2 20.00 MB
- ▶ Hard disk 3 24.00 GB
- ▶ Hard disk 4 10.00 GB
- ▶ Hard disk 5 20.00 GB

Chapter 10: Creating Horizon Desktop Pools

Add Desktop Pool - LC Pool 1

Desktop Pool Definition	Type
Type	<input checked="" type="radio"/> Automated Desktop Pool
User Assignment	
vCenter Server	
Setting	
Desktop Pool Identification	<input type="radio"/> Manual Desktop Pool
Desktop Pool Settings	
Provisioning Settings	<input type="radio"/> RDS Desktop Pool
View Composer Disks	

Add Desktop Pool - LC Pool 1

Desktop Pool Definition	User assignment
Type	<input checked="" type="radio"/> Dedicated
User Assignment	<input checked="" type="checkbox"/> Enable automatic assignment
vCenter Server	
Setting	
Desktop Pool Identification	<input type="radio"/> Floating
Desktop Pool Settings	

Add Desktop Pool - LC Pool 1

Desktop Pool Definition	vCenter Server
Type	<input type="radio"/> Full virtual machines
User Assignment	<input checked="" type="radio"/> View Composer linked clones
vCenter Server	<input type="radio"/> Instant clones
Setting	
Desktop Pool Identification	
Desktop Pool Settings	
Provisioning Settings	
View Composer Disks	
Storage Optimization	
vCenter Settings	
Advanced Storage Options	
Guest Customization	

vCenter Server	View Composer
vc-01.vjason.local(vjason\svc-horizon)	vc-01.vjason.local
vc-02.vjason.local(vjason\svc-horizon)	VIEWCOMP01.VJASON.LOCAL

Add Desktop Pool - W10x64-Base1

Desktop Pool Definition	Desktop Pool Identification
Type	ID: W10x64-Base1
User Assignment	Display name: Windows 10 LC Pool 1
vCenter Server	Access group: /
Setting	Description:
Desktop Pool Identification	
Desktop Pool Settings	

Add Desktop Pool - W10x64-Base1

Desktop Pool Definition	Desktop Pool Settings
Type	General
User Assignment	State: Enabled
vCenter Server	Connection Server restrictions: None <input type="button" value="Browse..."/>
Setting	Remote Settings
Desktop Pool Identification	Remote Machine Power Policy: Take no power action
Desktop Pool Settings	Automatically logoff after disconnect: Never
Provisioning Settings	
View Composer Disks	
Storage Optimization	
vCenter Settings	

Add Desktop Pool - W10x64-Base1

Desktop Pool Definition	Provisioning Settings
Type	Basic
User Assignment	<input checked="" type="checkbox"/> Enable provisioning
vCenter Server	<input checked="" type="checkbox"/> Stop provisioning on error
Setting	Virtual Machine Naming
Desktop Pool Identification	<input type="radio"/> Specify names manually
Desktop Pool Settings	<input type="text" value="0 names entered"/> <input type="button" value="Enter names."/>
Provisioning Settings	<input type="checkbox"/> Start machines in maintenance mode
View Composer Disks	# Unassigned machines kept powered on: <input type="text" value="1"/>
Storage Optimization	<input checked="" type="radio"/> Use a naming pattern
vCenter Settings	Naming Pattern: <input type="text" value="Win10x64-{n}"/>
Advanced Storage Options	
Guest Customization	
Ready to Complete	

Add Desktop Pool - W10x64-Base1

Desktop Pool Definition

- Type
- User Assignment
- vCenter Server

Setting

- Desktop Pool Identification
- Desktop Pool Settings
- Provisioning Settings
- View Composer Disks**
- Storage Optimization
- vCenter Settings
- Advanced Storage Options
- Guest Customization
- Ready to Complete

View Composer Disks

Persistent Disk

Redirect Windows profile to a persistent disk

Disk size: MB (minimum 128 MB)

Drive letter:

Do not redirect Windows profile

Disposable File Redirection ?

Redirect disposable files to a non-persistent disk

Disk size: MB (minimum 512 MB)

Drive letter: ?

Do not redirect disposable files

Add Desktop Pool - W10x64-Base1

Desktop Pool Definition

- Type
- User Assignment
- vCenter Server

Setting

- Desktop Pool Identification
- Desktop Pool Settings
- Provisioning Settings
- View Composer Disks
- Storage Optimization**
- vCenter Settings
- Advanced Storage Options


Storage Optimization

Storage Policy Management

Use VMware Virtual SAN

Do not use VMware Virtual SAN

Select separate datastores for replica and OS disks

 Virtual Volumes (VVOL) and fast NFS clones (VAAI) will be unavailable if the replica disks and OS disks are stored on separate datastores.

- Desktop Pool Definition**
- Type
- User Assignment
- vCenter Server
- Setting**
- Desktop Pool Identification
- Desktop Pool Settings
- Provisioning Settings
- View Composer Disks
- Storage Optimization
- vCenter Settings**
- Advanced Storage Options
- Guest Customization
- Ready to Complete

vCenter Settings

Default Image

- 1 Parent VM:
- 2 Snapshot:

Virtual Machine Location

- 3 VM folder location:

Resource Settings

- 4 Host or cluster:
- 5 Resource pool:
- 6 Datastores: Click Browse to select

Select Parent VM

Select the virtual machine to be used as the parent VM for this desktop pool

Show all parent VMs ? Filter

Name	Path
W10-AppVolCapture	/RTP/vm/Horizon/W10-AppVolCapture
W10x64-Base	/RTP/vm/W10x64-Base

Select default image

Parent VM: /RTP/vm/W10x64-Base

Snapshot:

Snapshot	Time created	Description
LC-Base	4/16/2016 2:18:18 PM	/LC-Base

VM Folder Location

Select the folder to store the VM

Show all folders 



Host or Cluster

Select a host or a cluster on which to run the virtual machines created for this desktop pool.



Resource Pool

Select a resource pool to use for this desktop pool.



Select Linked Clone Datastores

Select the linked clone datastores to use for this desktop pool. Only datastores that can be used by the selected host or cluster can be selected.

Show all datastores (including local datastores)   Local datastore  Shared datastore 

	Datastore	Capacity (GB)	Free (GB)	FS Type	Drive Type
<input checked="" type="checkbox"/>	 Desktop1-VSAN1	426.18	420.67	vsan	

- Desktop Pool Definition**
- Type
 - User Assignment
 - vCenter Server
- Setting**
- Desktop Pool Identification
 - Desktop Pool Settings
 - Provisioning Settings
 - View Composer Disks
 - Storage Optimization
 - vCenter Settings
 - Advanced Storage Options**
 - Guest Customization
 - Ready to Complete

Advanced Storage Options

Based on your resource selection, the following features are recommended. Options that are not supported by the selected hardware are disabled.

Use View Storage Accelerator

Disk Types: OS disks

Regenerate storage accelerator after: 7 Days

Other Options

Use native NFS snapshots (VAAI) ?

Reclaim VM disk space ?

Initiate reclamation when unused space on VM exceeds: 1 GB

Blackout Times

Storage accelerator regeneration and VM disk space reclamation do not occur during blackout times. The same blackout policy applies to both operations.

Add... Edit... Remove

Day	Time
Mon, Tue, Wed, Thu, Fri	08:00-17:00

- Desktop Pool Definition**
- Type
 - User Assignment
 - vCenter Server
- Setting**
- Desktop Pool Identification
 - Desktop Pool Settings
 - Provisioning Settings
 - View Composer Disks
 - Storage Optimization
 - vCenter Settings
 - Advanced Storage Options
 - Guest Customization**
 - Ready to Complete

Guest Customization

Domain: vjason.local(svc-horizoncomp)

AD container: OU=Computers,OU=Horizon Browse...

Allow reuse of pre-existing computer accounts ?

Use QuickPrep

Power-off script name: ?

Power-off script parameters: Example: p1 p2

Post-synchronization script name: ?

Post-synchronization script parameters: Example: p1 p2

Use a customization specification (SysPrep)

Add Desktop Pool - W10x64-Base1

Desktop Pool Definition	vCenter Server
Type	<input type="radio"/> Full virtual machines <input type="radio"/> View Composer linked clones <input checked="" type="radio"/> Instant clones
User Assignment	
vCenter Server	
Setting	
Desktop Pool Identification	
Desktop Pool Settings	
Provisioning Settings	
	vCenter Server
	vc-01.vjason.local(vjason\svc-horizon)

Add Desktop Pool - W10x64-Base1

Desktop Pool Definition	Guest Customization
Type	
User Assignment	
vCenter Server	
Setting	
Desktop Pool Identification	
Desktop Pool Settings	
Provisioning Settings	
Storage Optimization	
vCenter Settings	
Guest Customization	Domain: <input type="text" value="vjason.local(svc-horizoncomp)"/>
Ready to Complete	AD container: <input type="text" value="OU=Computers,OU=Horizon"/> <input type="button" value="Browse..."/>
	Use ClonePrep
	Power-off script name: <input type="text"/> <input type="button" value="?"/> Example: p1 p2
	Power-off script parameters: <input type="text"/> Example: p1 p2
	Post-synchronization script name: <input type="text"/> <input type="button" value="?"/> Example: p1 p2
	Post-synchronization script parameters: <input type="text"/> Example: p1 p2

Select template

Select a template from which to deploy virtual machines for this desktop pool. Only templates with a supported OS can be selected.

Filter

Template	Path
Win10x64-FCBase	/RTP/vm/Horizon/Win10x64-FCBase

Add Desktop Pool - W10x64-Base1

Desktop Pool Definition

- Type
- User Assignment
- vCenter Server
- Setting**
- Desktop Pool Identification
- Desktop Pool Settings
- Provisioning Settings
- Storage Optimization
- vCenter Settings
- Advanced Storage Options
- Guest Customization

Guest Customization

None - Customization will be done manually

Do not power on virtual machines after creation

Use this customization specification:

Show all customization specifications ?

Name	Guest OS
Win10x64-HorizonFC	Windows
Win2012R2	Windows

Machine Status 1

vCenter VMs | RDS Hosts | Others

Preparing	1
Provisioning	0
Customizing	0
Waiting for agent	0
Deleting	1
Maintenance mode	0
Startup	0
Problem Machines	0
Prepared for use	14
Provisioned	0

Machine Status 1

vCenter VMs | RDS Hosts | Others

Preparing	1
Problem Machines	0
Prepared for use	14
Provisioned	0
Available	14
Connected	0
Disconnected	0

Inventory

- Dashboard
- Users and Groups
- Catalog
- Resources
 - Farms
 - Machines
 - Persistent Disks

Filter Find Clear

Machine	Desktop Pool	DNS Name
IC3	InstantClone1	ic3.vdi.rtp.lab.emc.co
LC2	LinkedClone1	lc2.vdi.rtp.lab.emc.co
IC7	InstantClone1	ic7.vdi.rtp.lab.emc.co
LC1	LinkedClone1	lc1.vdi.rtp.lab.emc.co
IC4	InstantClone1	ic4.vdi.rtp.lab.emc.co

Navigator

- History
- Home
- vCenter Inventory Lists
- Hosts and Clusters
- VMs and Templates
- Storage
- Networking
- Policies and Profiles
- Hybrid Cloud Manager
- vRealize Orchestrator
- Update Manager
- Administration
- Tasks

Task Console

Task Name	Target	Status
Clone virtual machine	W10x64-Base	40 %
Update option values	esxi-01.vjason.local	Completed
Update option values	esxi-03.vjason.local	Completed
Update option values	esxi-02.vjason.local	Completed
Create folder	Horizon	Completed
Mark virtual machine as template	Win10x64-FCBase	Completed

100 items

Clone virtual machine

Status: 40 %
 Initiator: VJASON\svc-horizon
 Target: W10x64-Base

Home

- VC-01.vjason.local
 - RTP
 - Discovered virtual machine
 - Horizon
 - Win10x64-Base1
 - W10x64-1
 - W10x64-2
 - W10x64-3

Updated 4/16/2016 9:24 AM

Sessions: 0
 Problem vCenter VMs: 0
 Problem RDS Hosts: 0
 Events: 0
 System Health: 30 0 0 0

Inventory

- Dashboard
- Users and Groups
- Catalog
 - Desktop Pools

Desktop Pools

Add... Edit... Clone... Delete... Entitlements...

Filter Find

ID	Display Name	Type	Source	User A...
Win10x64-Base1	Windows 10 Pool 1	Automate...	vCenter (linke...	Floating

Add entitlementment...
Remove entitlementment...

Add Entitlements

Add new users and groups who can use the selected pool(s).

Name	Domains	Email
------	---------	-------

Find User or Group

Type: Users Groups

Domain:

Name/User name:

Description:

Name	User Name	1 ▼
Horizon_DTPool_Win10NP	Horizon_DTPool_Win10NP/vjason.local	

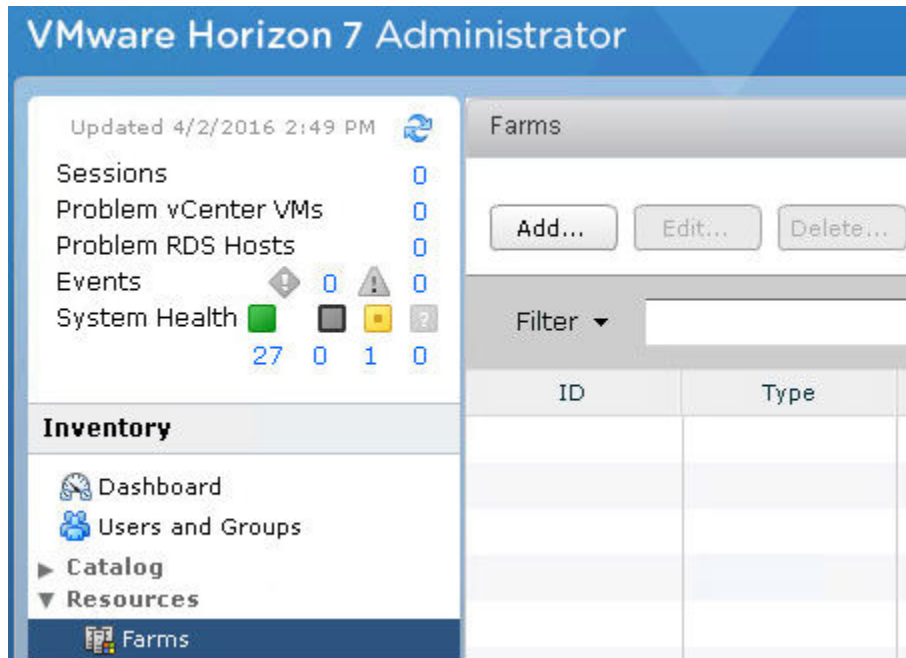
48 0 0 0

Filter

Machine	Desktop ...	DNS Name
IC3	Instant...	ic3.vdi.rtp.lab.en
IC7	Instant...	ic7.vdi.rtp.lab.en
LC1	LinkedCl...	lc1.vdi.rtp.lab.en
LC2	LinkedCl...	lc2.vdi.rtp.lab.en

- Assign User...
- Unassign User...**
- Enter Maintenance Mode...
- Exit Maintenance Mode...
- Disconnect Session...
- Logoff Session...
- Send Message...
- View Unentitled Machines...

Chapter 11: Implementing Horizon Application Pools



Add Farm - RDSH-App-1

Type
vCenter Server
Identification and Settings
Provisioning Settings
Storage Optimization
vCenter Settings
Advanced Storage Options
Guest Customization
Ready to Complete

Identification and Settings

General

ID: RDSH-App-1

Description:

Access group: /

Farm Settings

Default display protocol: PCoIP ?

Allow users to choose protocol: Yes

Empty session timeout (applications only): After... 1 Minutes

Add Farm - RDSH-App-1

Type

vCenter Server

Identification and Settings

Provisioning Settings

Storage Optimization

vCenter Settings

Advanced Storage Options

Guest Customization

Ready to Complete

Provisioning Settings

Basic

- Enable provisioning
- Stop provisioning on error

Virtual Machine Naming

Naming Pattern:

Farm Sizing

Max number of machines

Minimum number of ready(provisioned) machines during View Composer maintenance operations:

vCenter Settings

Default Image

- Parent VM:
- Snapshot:

Virtual Machine Location

- VM folder location:

Resource Settings

- Host or cluster:
- Resource pool:
- Datstores: 1 selected

VMware Horizon 7 Administrator

Updated 4/3/2016 8:32 AM

Sessions 0

Problem vCenter VMs 0

Problem RDS Hosts 0

Events 20 0

System Health

28 1 0 0

Inventory

- Dashboard
- Users and Groups
- ▶ **Catalog**
- ▼ **Resources**
- Farms

RDSH-APP-1

Summary
RDS Hosts
Sessions

Edit...
Recompose

General

ID: RDSH-APP-1

Type: Automated Farm

Description:

Access Group: /

Default display: PCOIP

VMware Horizon 7 Administrator

Updated 4/3/2016 8:32 AM

Sessions 0

Problem vCenter VMs 0

Problem RDS Hosts 0

Events 20 0

System Health

28 1 0 0

Inventory

- Dashboard
- Users and Groups
- ▶ **Catalog**
- ▼ **Resources**
- Farms

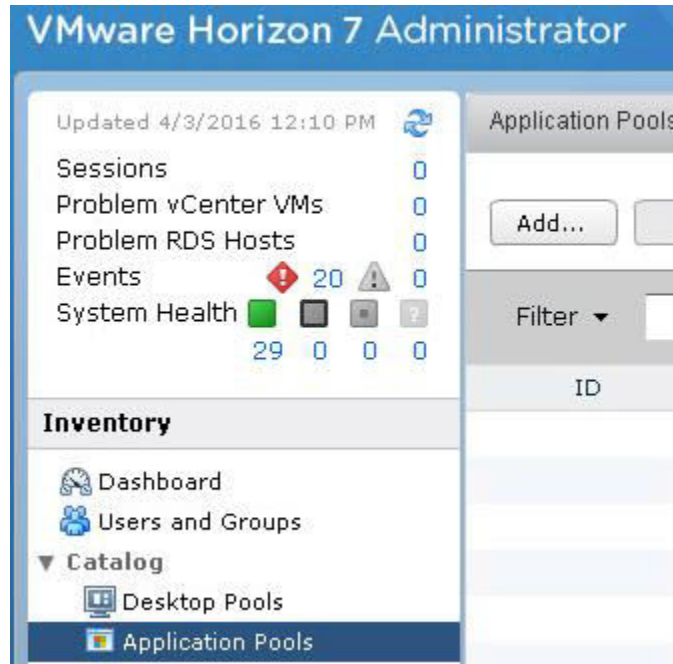
RDSH-APP-1

Summary
RDS Hosts
Sessions

Remove from farm...
▼ More Commands

Filter ▼ Find

DNS Name	Type	Max number of ...
rdshapp2.vjason.lo	Windows Server	Unlimited
rdshapp1.vjason.lo	Windows Server	Unlimited



Add Application Pools

Select an RDS farm

- Add application pool manually
- Select installed applications

Filter

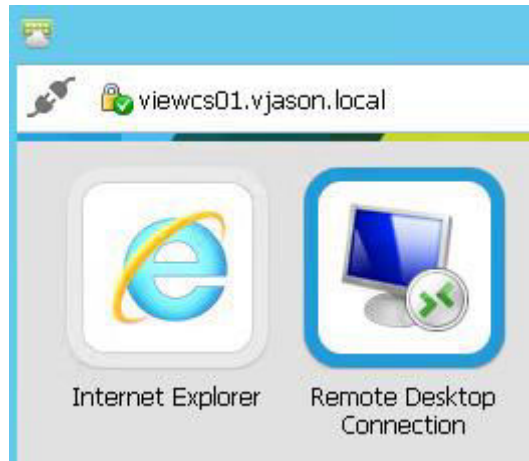
<input type="checkbox"/>	Name	1 ▲	Path
<input checked="" type="checkbox"/>	Internet Explorer		C:\Program Files\Internet Explorer\iexplore.exe

Add Application Pools

Edit ID and Display Name of the selected applications

Entitle users after this wizard finishes

ID	Display Name	Path
iexplore	Internet Explorer	C:\Program Files\Internet Explorer\iexplore.exe
Remote_Desktop_Conne	Remote Desktop Conned	C:\ProgramData\Microsoft\Windows\Start Menu\Programs\Accessori



Select installation type

DESTINATION SERVER
No servers are selected.

Before You Begin

Installation Type

Deployment Type

Deployment Scenario

Role Services

RD Connection Broker

Select the installation type. You can install roles and features on a running physical computer or virtual machine, or on an offline virtual hard disk (VHD).

Role-based or feature-based installation

Configure a single server by adding roles, role services, and features.

Remote Desktop Services installation

Install required role services for Virtual Desktop Infrastructure (VDI) to create a virtual machine-based or session-based desktop deployment.

Select a server

DESTINATION SERVER
Quick Start selected

Before You Begin

Installation Type

Deployment Type

Deployment Scenario

Server Selection

Confirmation

Completion

The Quick Start will install the RD Connection Broker, RD Web Access, and RD Session Host role services on the same server.

Server Pool

Filter:

Name	IP Address	Operating
RDSHBASE.vjason.local	172.16.100.204	

Selected

Computer

- VJASON.LOCAL (1)
 - RDSHBASE

Setting	State
Use the specified Remote Desktop license servers	Not configured
Hide notifications about RD Licensing problems that affect t...	Not configured
Set the Remote Desktop licensing mode	Not configured

VMware Horizon 7 Administrator

Updated 4/6/2016 3:19 PM

- Sessions: 0
- Problem vCenter VMs: 0
- Problem RDS Hosts: 0
- Events: 0
- System Health: 29

Inventory

- Dashboard
- Users and Groups
- Catalog
- Resources
 - Farms
 - Machines**

Machines

vCenter VMs | RDS Hosts | Others

All | Problem Machines

Remove from farm...

Filter [] Find Clear

RDS Host	Farm	Desktop Pool	Agent Version	Sessions	Status
rdshapp2.vjason.local	RDSH-APP-1		7.0.0	0	Available
rdshapp1.vjason.local	RDSH-APP-1		7.0.0	0	Available

Updated 4/3/2016 12:10 PM

- Sessions: 0
- Problem vCenter VMs: 0
- Problem RDS Hosts: 0
- Events: 20
- System Health: 29

Inventory

- Dashboard
- Users and Groups
- Catalog
- Resources
 - Monitoring
 - Sessions**

Sessions

All | Desktop | Applications

Disconnect Session... Logoff Session... Reset Virtual Machine Send Message...

Filter [] Find Clear

User	Type	Pool or Farm	DNS Name	Client ID	Security ...	Start Time	Duration	Session ...	L 1	Display P...
vjason.local\charles	Applications	RDSH-APP-1	rdshapp1.vjason	b96f69d2a02	VIEWCS01	4/3/2016 12:32:	2 minutes	Connected		PCoIP

Updated 4/3/2016 12:10 PM

- Sessions: 0
- Problem vCenter VMs: 0
- Problem RDS Hosts: 0
- Events: 20
- System Health: 29

Inventory

- Dashboard
- Users and Groups
- Catalog
 - Desktop Pools
 - Application Pools**
 - ThinApps

Application Pools

Add... **Edit...** Delete... Entitlements...

Filter [] Find Clear

ID	Display Name	Farm
iexplore	Internet Explorer	RDSH-APP-1
Remote_Des...	Remote Desktop Connection	RDSH-APP-1

Edit Application Pool

ID: iexplore

Display name: Internet Explorer

General

ID: RDSH-APP-1

Description:

Access group:

Farm Settings

Default display protocol: ?

Allow users to choose protocol:

Empty session timeout (applications only): Minutes ?

When timeout occurs:

Log off disconnected sessions:

Allow HTML Access to desktops and applications on this farm: Enabled ?
Requires installation of HTML Access.

Max sessions per RDS Host:

RDSH-APP-1

Summary RDS Hosts RDS Pools Sessions

Filter

DNS Name	Type	Max number of connections
rdshapp2.vjason.local	Windows Server 2012	Unlimited
rdshapp1.vjason.local	Windows Server 2012	Unlimited

RDSH-APP-1

Summary

RDS Hosts

RDS Pools

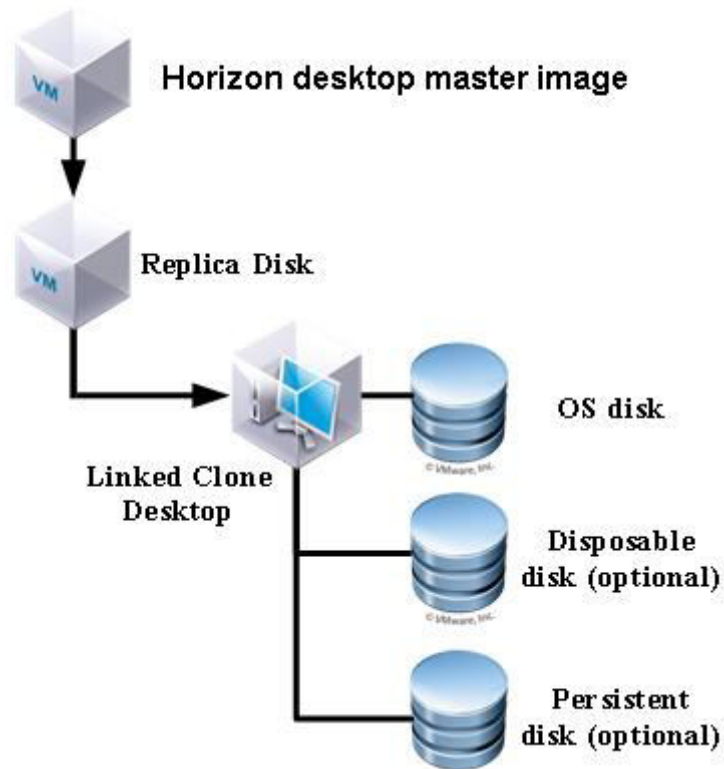
Sessions

Edit...

Recompose

General

Chapter 12: Performing Horizon Desktop Pool Maintenance



AppVolumes-W10		
Summary Inventory Sessions Entitlements Tasks		
<input type="button" value="Cancel task..."/> <input type="button" value="Pause task..."/> <input type="button" value="Resume task"/>		
Type	Description	
Refresh	Refreshing 2 user(s) to their base OS image. This task will force affected users off the system at Mar 18, 2016 9:54 AM so that the update can be performed.	Mar 18,

Global Settings

General

Edit...

View Administrator session timeout: 3,600 minutes

Forcibly disconnect users: 600 minutes

Single sign-on (SSO): Enabled

Client-dependent settings

For clients that support applications

If the user stops using the keyboard and mouse: Never

General Settings

Display a pre-login message: ?

Display warning before forced logoff:

After warning, log off after: Minutes

Your desktop is scheduled for an important update and will shut down in 10 minutes. Please save any unsaved work now

Servers

vCenter Servers Security Servers Connection Servers

Add... Edit... Remove Disable Provisioning... Enable Provisioning...

vCenter Server	VM Disk Space Reclamation	View Storage Accelerator
 vc-01.vjason.local(vjason\)		
 vc-02.vjason.local(vjason\)		

Advanced Settings

Specify the concurrent operation limits.

Max concurrent vCenter provisioning operations:



Max concurrent power operations:

Max concurrent View Composer maintenance operations:

Max concurrent View Composer provisioning operations:

Desktop Pools



Filter

ID	Display ...
 AppVolumes-W10	AppVolume
 AppVolumes1	AppVolume

6

Datstores:

1 selected

	Datstore	Capacity (GB)	Free (GB)	FS Type	Drive Typ	Machine	Storage Overcommit 
<input checked="" type="checkbox"/>	 RTP1:Infra	2,520.94	2,078.51	NFS		2	Conservative <input type="button" value="v"/>

Updated 3/17/2016 2:39 PM

Sessions 0
 Problem vCenter VMs 0
 Problem RDS Hosts 0
 Events 0 1
 System Health 30 0 0 0

Inventory

- Dashboard
- Users and Groups
- ▼ **Catalog**
 - Desktop Pools

Desktop Pools

Add... Edit... Clone... Delete...

Filter Find

ID	Display ...	Type
AppVolumes-W10	AppVolume	Automated
AppVolumes1	AppVolume	Automated

AppVolumes-W10

Summary Inventory Sessions Entitlements Tasks Events Policies

Edit... Delete Desktop Pool... Entitlements... Status View Composer

General

Unique ID: AppVolumes-W10

Pool Settings

Max number of machines

Refresh
 Recompose
 Rebalance

Refresh

Scheduling

Specify when you want this task to start

Start at: 05/16/2016 9 : 16 Web browser local time

Force users to log off

Users will be forced to log off when the system is ready to operate on their virtual machines. Before being forcibly logged off, users may have a grace period in which to save their work (Global Settings).

Wait for users to log off

Wait for connected users to disconnect before the task starts. The task starts immediately on machines without active sessions.

Stop at first error

The warning and grace period can be edited in global settings:

Display warning before forced logoff:

Log off time: 5 minutes

Log off message: Your desktop is scheduled for an

Parent VM:

Snapshot:

Snapshot	Time created	Description	Path
PreDeploy	1/12/2016 9:34:27		/PreDeploy
UEM	1/16/2016 11:29:1		/PreDeploy/UEM
UEM2	1/16/2016 1:09:36		/PreDeploy/UEM/UEM2
Updated App Volumes Agent	3/18/2016 9:50:15		/PreDeploy/UEM/UEM2/Agent

	Datastore	Capacity (GB)	Free (GB)	FS Type	Drive Typ	Machine	Storage Overcommit
<input checked="" type="checkbox"/>	RTP1:Infra	2,520.94	2,076.40	NFS		2	Conservative
<input type="checkbox"/>	RTP1:Infra2	1,008.37	769.88	NFS		0	

AppVolumes-W10

Summary | Inventory | Sessions | Entitlements | Tasks | Events | Policies

General

Unique ID: AppVolumes-W10

Pool Settings

Max number of desktops per machine

- Refresh
- Recompose
- Rebalance

Persistent Disks

Attached | Detached

Filter

Persistent Disk	User	Machine
AppV10-1-vdm-user-disk-D	vjason.local\Charles	AppV10-1
AppV10-2-vdm-user-disk-D		AppV10-2

Detach Persistent Disk

Select the storage location for the detached persistent disk.

Use current datastore

Use the following datastore:

Persistent Disks

Attached **Detached**

Filter Access Group:

Persistent Disk	User	Last Desktop Pool
AppV10-1-vdm-user-disk-D	vjason.local\Charles	AppVolumes-W10

Filter

Persistent Disk	User
AppV10-1-vdm-user-disk-D	vjason.local\Charles

Persistent Disks

Attached **Detached**



Import Persistent Disk From vCenter

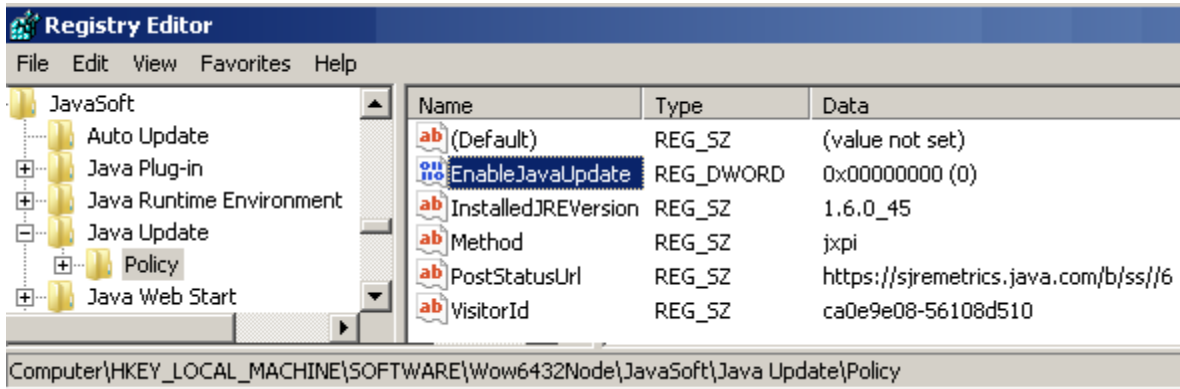
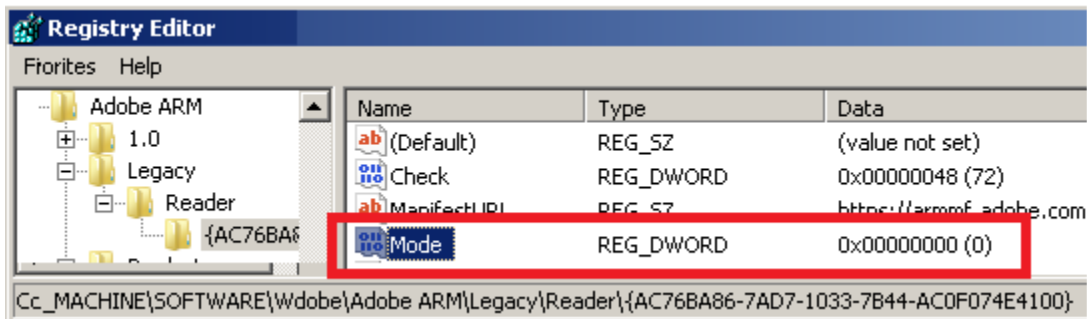
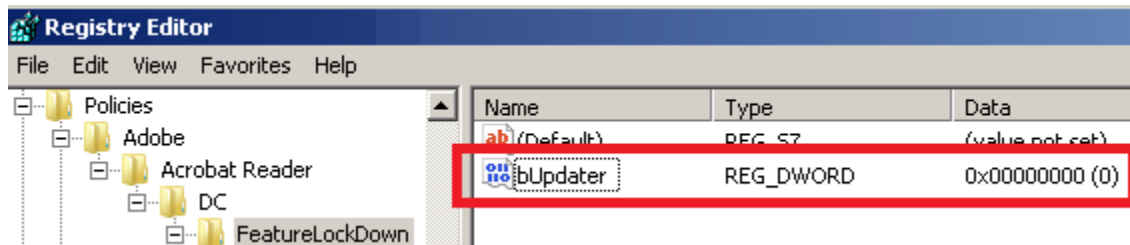
Import a persistent disk from a vCenter server.

vCenter Server:	vc-01.vjason.local(vjason\administrator) ▼
Datacenter:	RTP ▼
Linked-clone desktop pool:	AppVolumes-W10 ▼
Access Group:	/ ▼
Persistent Disk File:	[RTP1:Infra] AppV10-1-vdm-us <input type="button" value="Browse..."/>
User:	vjason.local\Charles <input type="button" value="Browse..."/>

Chapter 13: Creating a Master Horizon Desktop Image

Where do you want to install Windows?

	Name	Total size	Free space	Type
	Drive 0 Partition 1: System Reserve	100.0 MB	88.0 MB	System
	Drive 0 Partition 2: OS_8k	31.9 GB	31.8 GB	Primary



```
C:\Administrator: C:\Windows\System32\cmd.exe

C:\Windows\Microsoft.NET\Framework64\v4.0.30319>ngen executequeueditems
Microsoft (R) CLR Native Image Generator - Version 4.0.30319.34209
Copyright (c) Microsoft Corporation. All rights reserved.
All compilation targets are up to date.

C:\Windows\Microsoft.NET\Framework64\v4.0.30319>
```

```
PS C:\Users\administrator> Get-AppxProvisionedPackage -Online | Select DisplayName, PackageName
```

DisplayName	PackageName
Microsoft.3DBuilder	Microsoft.3DBuilder_10.9.50.0_neutral~_8wekyb3d8bbwe
Microsoft.Appconnector	Microsoft.Appconnector_2015.707.550.0_neutral~_8wekyb3d8bbwe
Microsoft.BingFinance	Microsoft.BingFinance_4.6.169.0_neutral~_8wekyb3d8bbwe
Microsoft.BingNews	Microsoft.BingNews_4.6.169.0_neutral~_8wekyb3d8bbwe

```
PS C:\> Get-AppxProvisionedPackage -Online | Where-Object {$_.PackageName -notlike "*store*"} | Remove-AppxProvisionedPackage -Online
```

```
Path :
Online : True
Restart Needed : False

Path :
Online : True
Restart Needed : False
```

Boot options

Safe boot

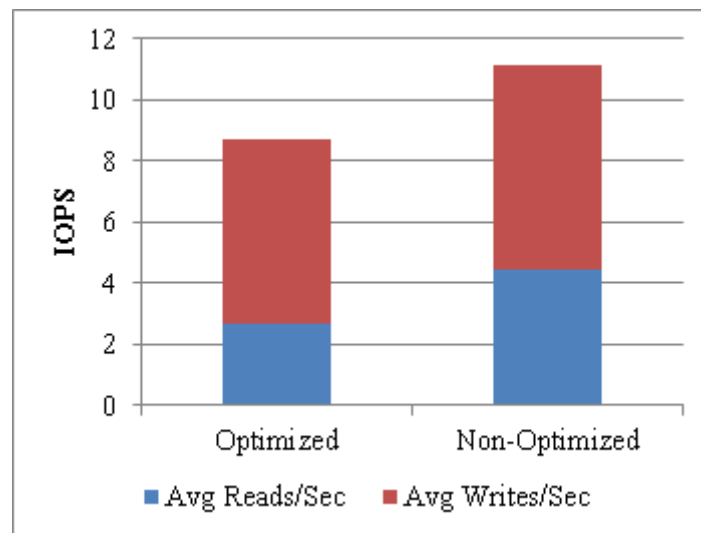
- Minimal
- Alternate shell
- Active Directory repair
- Network

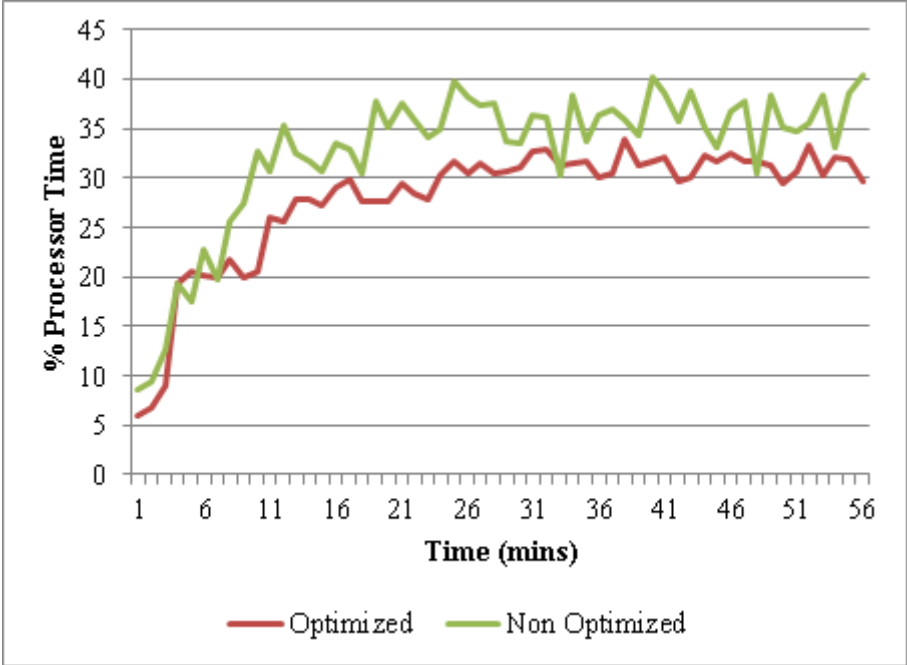
No GUI boot

Boot log

Base video

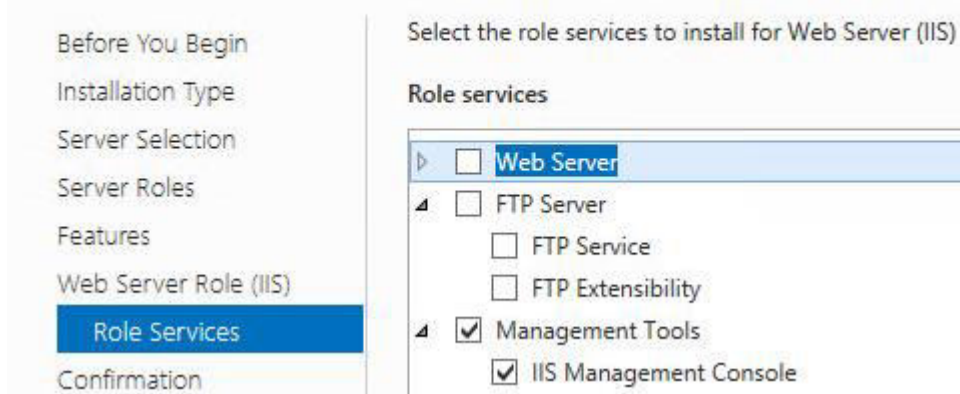
OS boot information





Chapter 14: Managing Horizon SSL Certificates

Select role services



Select a task:

[Request a certificate](#)

[View the status of a pending certificate request](#)

[Download a CA certificate, certificate chain, or CRL](#)

Request a Certificate

Select the certificate type:

[User Certificate](#)

Or, submit an [advanced certificate request](#).

Advanced Certificate Request

The policy of the CA determines the types of certificates you can request. Click one of the following options to:

[Create and submit a request to this CA.](#)

[Submit a certificate request by using a base-64-encoded CMC or PKCS #10 file, or submit a renewal request by using a base-64-encoded PKCS #7 file.](#)

Advanced Certificate Request

Certificate Template:

Web Server-Export

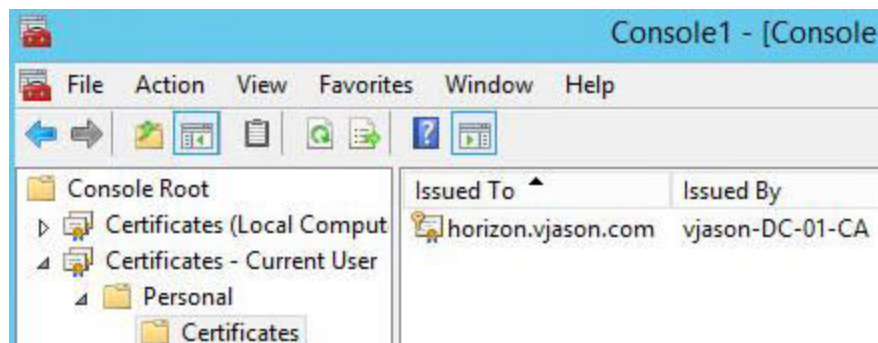
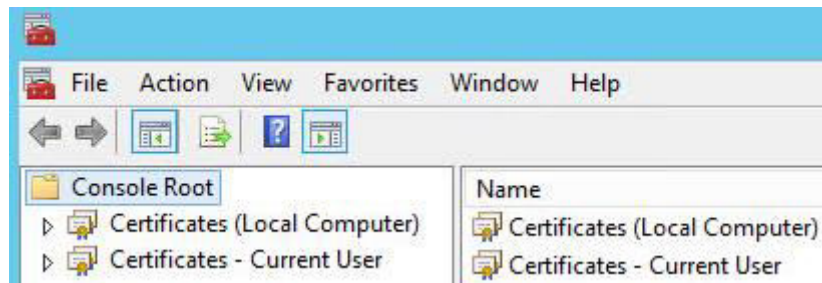
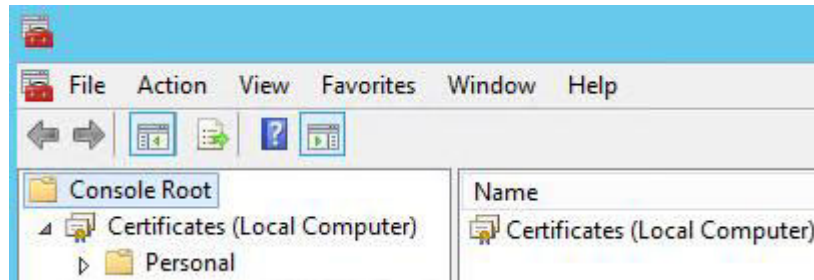
Identifying Information For Offline Template:

Name: horizon.vjason.com

E-Mail: jason@vjason.com

This snap-in will always manage certificates for:

- My user account
- Service account
- Computer account





Export Private Key

You can choose to export the private key with the certificate.

Private keys are password protected. If you want to export the private key with the certificate, you must type a password on a later page.

Do you want to export the private key with the certificate?

- Yes, export the private key
- No, do not export the private key

- Personal Information Exchange - PKCS #12 (.PFX)
 - Include all certificates in the certification path if possible
 - Delete the private key if the export is successful
 - Export all extended properties

Security

To maintain security, you must protect the private key to a security principal or by using a password.

Group or user names (recommended)

Add

Remove

Password:

●●●●●●●●

Confirm password:

●●●●●●●●

```

c:\OpenSSL-Win32\bin>openssl.exe pkcs12 -in e:\Horizon\horap01.pfx -out e:\Horizon\key.pem -nodes
Enter Import Password:
MAC verified OK

c:\OpenSSL-Win32\bin>openssl.exe rsa -in e:\Horizon\key.pem -out e:\Horizon\server.key
writing RSA key

c:\OpenSSL-Win32\bin>openssl.exe pkcs12 -in e:\Horizon\horap01.pfx -clcerts -nokeys -out e:\Horizon\horap01.crt
Enter Import Password:
MAC verified OK

```

Download a CA Certificate, Certificate Chain, or CRL

To trust certificates issued from this certification authority, install this CA certificate chain.

To download a CA certificate, certificate chain, or CRL, select the certificate and encoding method.

CA certificate:

Current [vjson-DC-01-CA(1)]
Previous [vjson-DC-01-CA]

Encoding method:

- DER
 Base 64

Download CA certificate

```

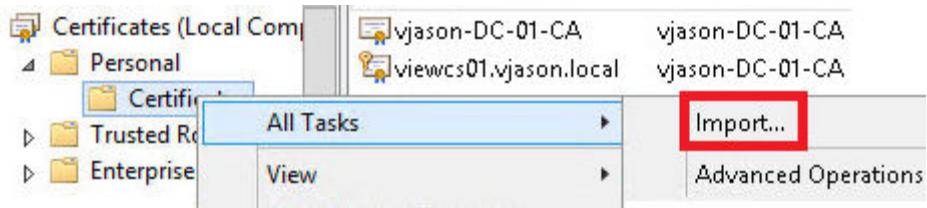
-----BEGIN CERTIFICATE-----
MIIFvjCCBKagAwIBAgITLgAAAB11czz5ZVRZDwABAAAHTANBgkqhkiG9w0BAQsF
-----END CERTIFICATE-----
-----BEGIN CERTIFICATE-----
MIIDlDCCAnygAwIBAgIQSsToI5b9waNGuNFjY8/GdjANBgkqhkiG9w0BAQsFADBJ
-----END CERTIFICATE-----

```

The screenshot shows the Windows Certificate Manager interface. The 'Certificates (Local Computer)' tree is expanded to 'Personal' > 'Certificates'. A table lists the certificates:

Issued To	Issued By	Expiration Date	Intended Purposes	Friendly Name
VIEWCS01.vjason.l...	VIEWCS01.vjaso...	6/13/2025	Server Authenticati...	vdm
vjson-DC-01-CA	vjson-DC-01-CA	5/4/2039	<All>	<None>

The 'VIEWCS01.vjason.local' certificate is selected, and its properties are shown in the 'VIEWCS01.vjason.local Properties' dialog box. The 'Friendly name' field is set to 'vdm-original'.

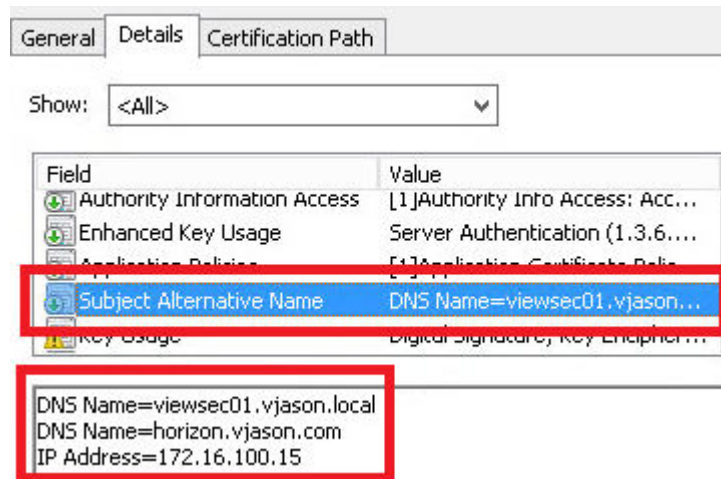
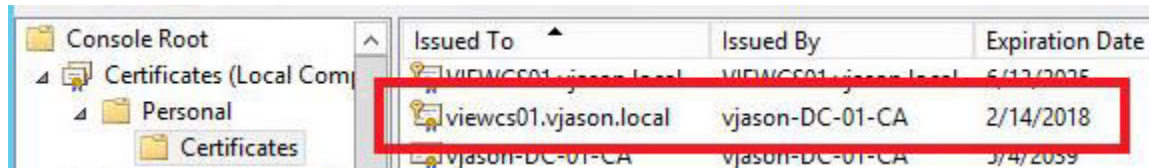


Windows can automatically select a certificate store, or you can specify a location for the certificate.

- Automatically select the certificate store based on the type of certificate
- Place all certificates in the following store

Certificate store:

Personal



```

c:\Program Files (x86)\VMware\VMware View Composer>dir *.exe
Volume in drive C has no label.
Volume Serial Number is 0217-149C

Directory of c:\Program Files (x86)\VMware\VMware View Composer

11/29/2015  10:34 PM                327,384 SviConfig.exe
11/29/2015  10:34 PM                40,664 SviWebService.exe
11/29/2015  10:34 PM                 81,920 zip.exe
               3 File(s)              449,968 bytes
               0 Dir(s)  27,883,098,112 bytes free

c:\Program Files (x86)\VMware\VMware View Composer>_

```

```

c:\Program Files (x86)\VMware\VMware View Composer>SviConfig.exe -operation=replacecertificate -delete=false

Select a certificate:


 1. Subject: C=US, S=CA, L=CA, O=VMware Inc., OU=VMware Inc., CN=VIEWCOMP01, E=support@vmware.com
    Valid from: 12/23/2015 9:37:42 AM
    Valid to: 12/23/2017 9:37:42 AM
    Thumbprint: 6ABE570CCBA8861593EB939CC5F6BDE788A21568

 2. Subject: CN=viewcomp01.vjason.local
    Valid from: 2/15/2016 7:59:44 AM
    Valid to: 2/14/2018 7:59:44 AM
    Thumbprint: 54FD4F386DD73986CCED2F9D2AC34012065DACAE

Enter choice (0-2, 0 to abort):_

```

View Composer Server Details

Name:  https://viewcomp01.vjason.local:18443

Version: 6.2.0.17889

Status: No problem detected.

SSL Certificate: Valid

Additional Options:


Request Format: CMC PKCS10



Hash Algorithm: sha1 

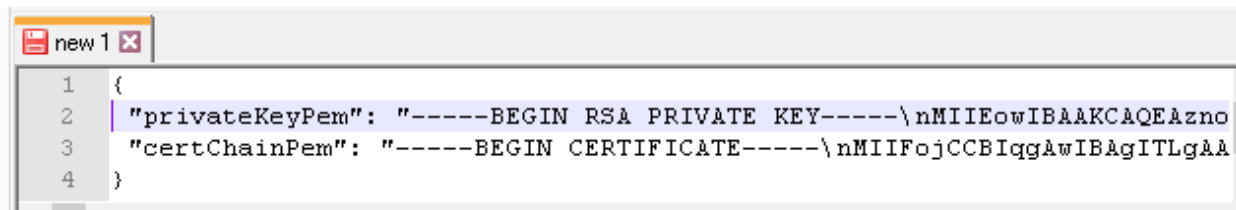
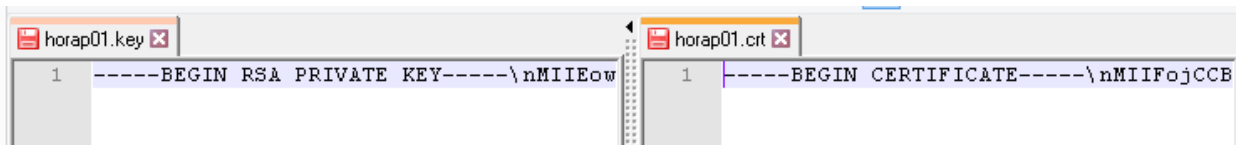
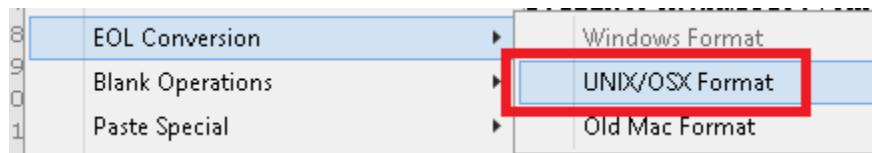
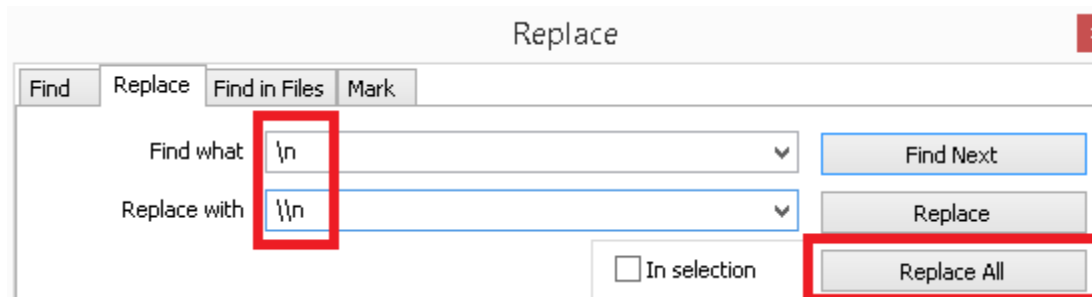
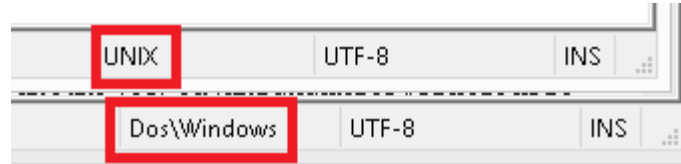
Only used to sign request.

Save request

Attributes:

san:dns=viewsec01.vjason.local



PUT

Authorization Headers (1) Body

Basic Auth

Username : admin

Password :

PUT Params

Authorization Headers (2) **Body** Pre-request script Tests

form-data x-www-form-urlencoded raw binary

```

1 {
2   "privateKeyPem": "-----BEGIN RSA PRIVATE KEY-----\nMIIIEowIBAAKCAQEAznob0TwXYkM0JsKK
3   "certChainPem": "-----BEGIN CERTIFICATE-----\nMIIIFojCCBIqgAwIBAgIILgAAADg9qPYcPnf66
4 }

```



```

root@rtppu01:/etc/nginx# scp root@172.16.100.27:/tmp/appool_self_umware.com.crt /etc/nginx/appool_
self_umware.com.crt
The authenticity of host '172.16.100.27 (172.16.100.27)' can't be established.
RSA key fingerprint is a7:9a:c0:b3:1f:df:ac:b1:a3:a7:8b:2c:82:f2:be:70.
Are you sure you want to continue connecting (yes/no)? yes
Warning: Permanently added '172.16.100.27' (RSA) to the list of known hosts.
Password:
appool_self_umware.com.crt                                100% 3850    3.8KB/s   00:00
root@rtppu01:/etc/nginx# scp root@172.16.100.27:/tmp/appool_self_umware.com.key /etc/nginx/appool_
self_umware.com.key
Password:
appool_self_umware.com.key                                100% 1675    1.6KB/s   00:00
root@rtppu01:/etc/nginx#

```

Chapter 15: Using Horizon PowerCLI

```
C:\> winrm quickconfig -transport:https
WinRM service is already running on this machine.
WinRM is not set up to allow remote access to this machine.
The following changes must be made:

Create a WinRM listener on HTTPS://* to accept WS-Man requests to any IP on this
machine.
Configure CertificateThumbprint setting for the service, to be used for CredSSP
authentication.

Make these changes [y/n]? y

WinRM has been updated for remote management.

Created a WinRM listener on HTTPS://* to accept WS-Man requests to any IP on thi
s machine.
Configured required settings for the service.
```

```
PS C:\> Enter-PSSession -ComputerName "viewcs03.vjason.local" -UseSSL -Credential "vjason\svc-horizon"
```

Enter your credentials.

User name:

Password:

```
[viewcs03.vjason.local]: PS C:\> _
```

```
[viewcs03.vjason.local]: PS C:\Program Files\VMware\VMware View\Server\extras\PowerShell> .\add-snapin.ps1
Loading VMware View PowerCLI
```

Welcome to VMware View PowerCLI

```
[viewcs03.vjason.local]: PS C:\Program Files\VMware\VMware View\Server\extras\PowerShell>
```