

Chapter 1: Getting Started

```
Windows PowerShell
Copyright (C) Microsoft Corporation. All rights reserved.

PS C:\Users\tmitchell> Get-Module -Name PowerShellGet -ListAvailable | Select-Object -Property Name,Version,Path

Name          Version Path
-----
PowerShellGet 1.6.5   C:\Program Files\WindowsPowerShell\Modules\PowerShellGet\1.6.5\PowerShellGet.psd1
PowerShellGet 1.6.0   C:\Program Files\WindowsPowerShell\Modules\PowerShellGet\1.6.0\PowerShellGet.psd1
PowerShellGet 1.0.0.1 C:\Program Files\WindowsPowerShell\Modules\PowerShellGet\1.0.0.1\PowerShellGet.psd1

PS C:\Users\tmitchell>
```

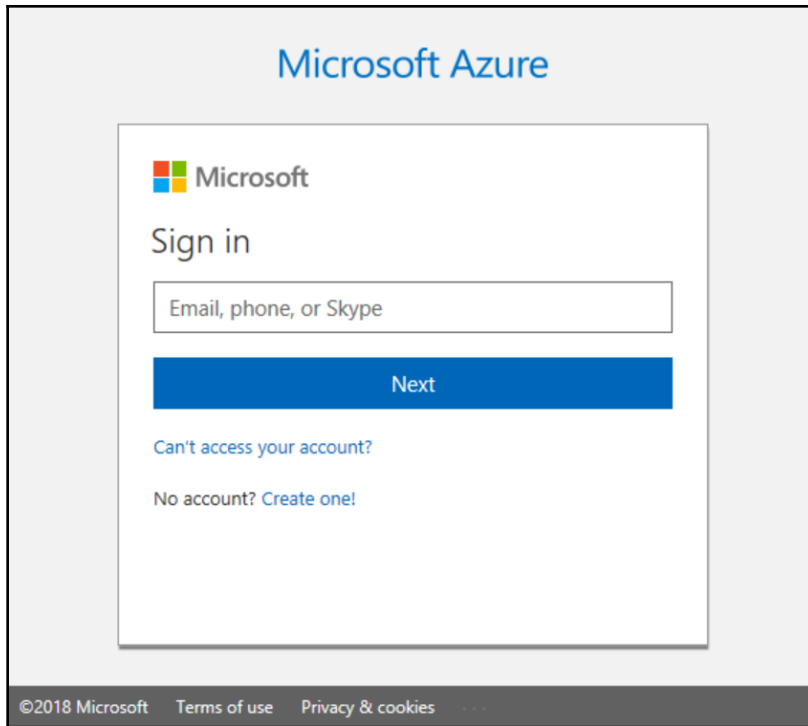
```
Windows PowerShell
Copyright (C) Microsoft Corporation. All rights reserved.

Installing package 'PowerShellGet'
  Installed dependent package 'PackageManagement'
  [ooooooooooooooooooooooooooooooooooooooooooooooooooooooooooooooooooooooooooooo ]
PowerShellGet 1.6.5   C:\Program Files\WindowsPowerShell\Modules\PowerShellGet\1.6.5\PowerShellGet.psd1
PowerShellGet 1.6.0   C:\Program Files\WindowsPowerShell\Modules\PowerShellGet\1.6.0\PowerShellGet.psd1
PowerShellGet 1.0.0.1 C:\Program Files\WindowsPowerShell\Modules\PowerShellGet\1.0.0.1\PowerShellGet.psd1

PS C:\Users\tmitchell> Install-Module PowerShellGet -Force
```

```
Execution Policy Change
The execution policy helps protect you from scripts that you do not trust. Changing the execution policy might expose you to the security risks described in the about_Execution_Policies help topic at https://go.microsoft.com/fwlink/?LinkID=135170. Do you want to change the execution policy?
[Y] Yes [A] Yes to All [N] No [L] No to All [S] Suspend [?] Help (default is "N"): y
```

```
Untrusted repository
You are installing the modules from an untrusted repository. If you trust this repository, change its InstallationPolicy value by running the Set-PSRepository cmdlet. Are you sure you want to install the modules from 'PSGallery'?
[Y] Yes [A] Yes to All [N] No [L] No to All [S] Suspend [?] Help (default is "N"):
```



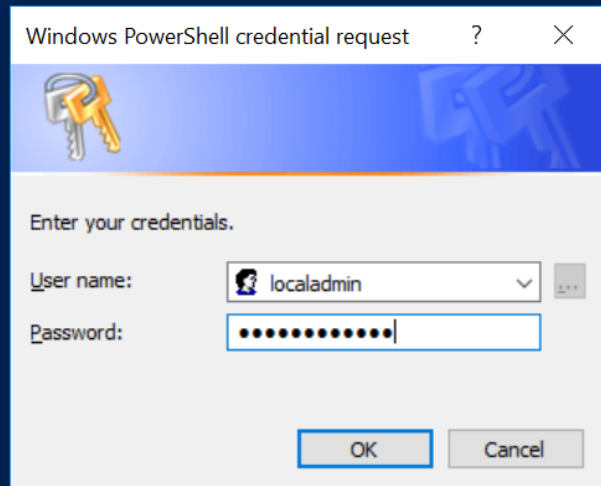
```
PS C:\Users\tmitchell> New-AzureRmResourceGroup -ResourceGroupName "VMLab" -Location "EastUS"

ResourceGroupName : VMLab
Location           : eastus
ProvisioningState  : Succeeded
Tags               :
ResourceId         : /subscriptions/4eacb230-3e94-4bec-9cb8-2a5be79fb60e/resourceGroups/VMLab

PS C:\Users\tmitchell>
```

```
PS C:\Users\tmitchell> $cred = Get-Credential
```

cmdlet Get-Credential at command pipeline position 1
Supply values for the following parameters:
Credential



```
Creating Azure resources  
5% /  
[ooooooooo]
```

```
Creating virtualNetworks/myVnet.
```

```
PS C:\Users\tmitchell> $cred = Get-Credential
```

cmdlet Get-Credential at command pipeline position 1
Supply values for the following parameters:
Credential

```
PS C:\Users\tmitchell> New-AzureRmVm `
>> -ResourceGroupName "Vmlab"
>> -Name "myVM"
>> -Location "EastUS"
>> -VirtualNetworkName "myVnet"
>> -SubnetName "mySubnet"
>> -SecurityGroupName "myNSG"
>> -PublicIpAddressName "myPublicIP"
>> -Credential $cred
```

WARNING: New-AzureRmVm: A property of the output of this cmdlet will change in an upcoming breaking change release. The StorageAccountType property for a DataDisk will return Standard_LRS and Premium_LRS

```

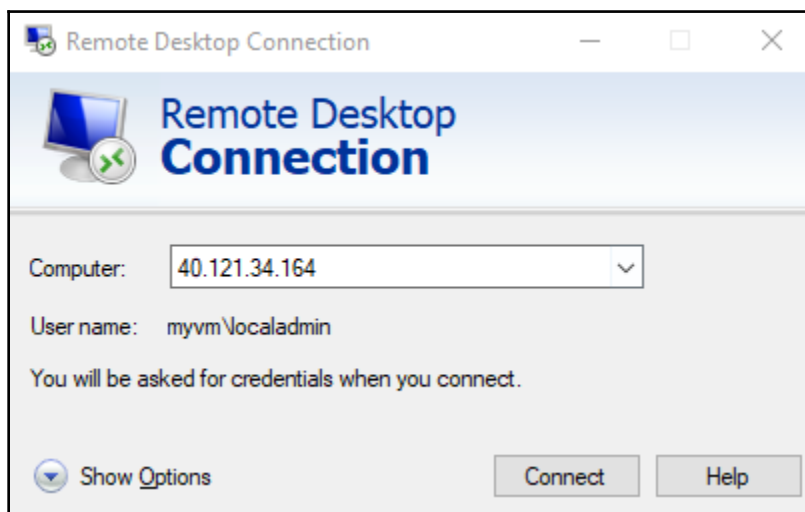
ResourceGroupName      : VMLab
Id                    : /subscriptions/4eacb230-3e94-4bec-9cb8-2a5be79fb60e/resourceGroups/VMLab/providers/Microsoft.Compute/virtualMachines/myVM
VmId                  : afd9bc14-2d22-450c-9b57-aa11e41b4a46
Name                  : myVM
Type                  : Microsoft.Compute/virtualMachines
Location              : eastus
Tags                  : {}
HardwareProfile       : {VmSize}
NetworkProfile        : {NetworkInterfaces}
OSProfile              : {ComputerName, AdminUsername, WindowsConfiguration, Secrets}
ProvisioningState     : Succeeded
StorageProfile        : {ImageReference, OsDisk, DataDisks}
FullyQualifiedDomainName : myvm-140b09.EastUS.cloudapp.azure.com

```

```
PS C:\Users\tmitchell> Get-AzureRmPublicIpAddress -Name myPublicIP -ResourceGroupName VMLab | Select IPAddress
```

```
IpAddress
```

```
-----
40.121.34.164
```



```
PS C:\Users\tmitchell> Get-AzureRmVMSize -Location "EastUS"
```

Name	NumberOfCores	MemoryInMB	MaxDataDiskCount	OSDiskSizeInMB	ResourceDiskSizeInMB
Standard_B1ms	1	2048	2	1047552	4096
Standard_B1s	1	1024	2	1047552	2048
Standard_B2ms	2	8192	4	1047552	16384
Standard_B2s	2	4096	4	1047552	8192
Standard_B4ms	4	16384	8	1047552	32768
Standard_B8ms	8	32768	16	1047552	65536
Standard_DS1_v2	1	3584	4	1047552	7168
Standard_DS2_v2	2	7168	8	1047552	14336

```
PS C:\Users\tmitchell> Get-AzureRmVMSize -ResourceGroupName "VMLab" -VMName "myVM"
```

Name	NumberOfCores	MemoryInMB	MaxDataDiskCount	OSDiskSizeInMB	ResourceDiskSizeInMB
Standard_B1ms	1	2048	2	1047552	4096
Standard_B1s	1	1024	2	1047552	2048
Standard_B2ms	2	8192	4	1047552	16384
Standard_B2s	2	4096	4	1047552	8192
Standard_B4ms	4	16384	8	1047552	32768
Standard_B8ms	8	32768	16	1047552	65536
Standard_A0	1	768	1	1047552	20480
Standard_A1	1	1792	2	1047552	71680
Standard_A2	2	3584	4	1047552	138240
Standard_A3	4	7168	8	1047552	291840
Standard_A5	2	14336	4	1047552	138240
Standard_A4	8	14336	16	1047552	619520
Standard_A6	4	28672	8	1047552	291840
Standard_A7	8	57344	16	1047552	619520

```
PS C:\Users\tmitchell> Update-AzureRmVM -VM $vm -ResourceGroupName "VMLab"
```

RequestId	IsSuccess	Status	Code	Status	Code	Reason	Phrase
	True			OK		OK	

```
ResourceGroupName : VMLab
Name              : myVM
Disks[0]         :
  Name            : myVM_OsDisk_1_c2757511fbf8423ebce7a23e0c297873
  Statuses[0]     :
    Code          : ProvisioningState/succeeded
    Level         : Info
    DisplayStatus : Provisioning succeeded
    Time          : 7/20/2018 7:41:52 PM
VMAgent          :
  VmAgentVersion : 2.7.41491.875
  Statuses[0]    :
    Code          : ProvisioningState/succeeded
    Level         : Info
    DisplayStatus : Ready
    Message       : GuestAgent is running and accepting new configurations.
    Time          : 7/20/2018 7:42:02 PM
  Statuses[0]    :
    Code          : ProvisioningState/succeeded
    Level         : Info
    DisplayStatus : Provisioning succeeded
    Time          : 7/20/2018 7:43:33 PM
  Statuses[1]    :
    Code          : PowerState/running
    Level         : Info
    DisplayStatus : VM running
```

```
Statuses[1]      :
  Code           : PowerState/deallocated
  Level          : Info
  DisplayStatus  : VM deallocated
```

```
PS C:\Users\tmitchell> Remove-AzureRmVM -ResourceGroupName "VMLab" -Name "myVM"

Virtual machine removal operation
This cmdlet will remove the specified virtual machine. Do you want to continue?
[Y] Yes [N] No [S] Suspend [?] Help (default is "Y"):
```

Chapter 2: Working with Images

```
PS C:\Users\tmitchell> New-AzureRmResourceGroup -ResourceGroupName "VMLab" -Location "EastUS"

ResourceGroupName : VMLab
Location           : eastus
ProvisioningState  : Succeeded
Tags               :
ResourceId        : /subscriptions/0aec89a4-d5f8-4343-b43b-1ec899719dfe/resourceGroups/VMLab
```

```
PS C:\Users\tmitchell> Get-AzureRmImagePublisher -Location "EastUS"

PublisherName      Location Id
-----
1e                 eastus     /Subscriptions/4eacb230-3e94-4bec-9cb8-2a5be79fb60e/Providers/Microsoft.Compute/Loca...
4psa               eastus     /Subscriptions/4eacb230-3e94-4bec-9cb8-2a5be79fb60e/Providers/Microsoft.Compute/Loca...
5nine-software-inc eastus     /Subscriptions/4eacb230-3e94-4bec-9cb8-2a5be79fb60e/Providers/Microsoft.Compute/Loca...
7isolutions        eastus     /Subscriptions/4eacb230-3e94-4bec-9cb8-2a5be79fb60e/Providers/Microsoft.Compute/Loca...
a10networks        eastus     /Subscriptions/4eacb230-3e94-4bec-9cb8-2a5be79fb60e/Providers/Microsoft.Compute/Loca...
abiquo             eastus     /Subscriptions/4eacb230-3e94-4bec-9cb8-2a5be79fb60e/Providers/Microsoft.Compute/Loca...
accellion          eastus     /Subscriptions/4eacb230-3e94-4bec-9cb8-2a5be79fb60e/Providers/Microsoft.Compute/Loca...
acops              eastus     /Subscriptions/4eacb230-3e94-4bec-9cb8-2a5be79fb60e/Providers/Microsoft.Compute/Loca...
Acronis            eastus     /Subscriptions/4eacb230-3e94-4bec-9cb8-2a5be79fb60e/Providers/Microsoft.Compute/Loca...
Acronis.Backup     eastus     /Subscriptions/4eacb230-3e94-4bec-9cb8-2a5be79fb60e/Providers/Microsoft.Compute/Loca...
actian-corp        eastus     /Subscriptions/4eacb230-3e94-4bec-9cb8-2a5be79fb60e/Providers/Microsoft.Compute/Loca...
actian_matrix      eastus     /Subscriptions/4eacb230-3e94-4bec-9cb8-2a5be79fb60e/Providers/Microsoft.Compute/Loca...
actifio            eastus     /Subscriptions/4eacb230-3e94-4bec-9cb8-2a5be79fb60e/Providers/Microsoft.Compute/Loca...
activeeon          eastus     /Subscriptions/4eacb230-3e94-4bec-9cb8-2a5be79fb60e/Providers/Microsoft.Compute/Loca...
adatao             eastus     /Subscriptions/4eacb230-3e94-4bec-9cb8-2a5be79fb60e/Providers/Microsoft.Compute/Loca...
adobe_test         eastus     /Subscriptions/4eacb230-3e94-4bec-9cb8-2a5be79fb60e/Providers/Microsoft.Compute/Loca...
advantech          eastus     /Subscriptions/4eacb230-3e94-4bec-9cb8-2a5be79fb60e/Providers/Microsoft.Compute/Loca...
advantech-webaccess eastus     /Subscriptions/4eacb230-3e94-4bec-9cb8-2a5be79fb60e/Providers/Microsoft.Compute/Loca...
aerospike          eastus     /Subscriptions/4eacb230-3e94-4bec-9cb8-2a5be79fb60e/Providers/Microsoft.Compute/Loca...
aerospike-database eastus     /Subscriptions/4eacb230-3e94-4bec-9cb8-2a5be79fb60e/Providers/Microsoft.Compute/Loca...
aiscaler-cache-control-ddos-and-url-rewriting- eastus     /Subscriptions/4eacb230-3e94-4bec-9cb8-2a5be79fb60e/Providers/Microsoft.Compute/Loca...
akumina            eastus     /Subscriptions/4eacb230-3e94-4bec-9cb8-2a5be79fb60e/Providers/Microsoft.Compute/Loca...
alachisoft         eastus     /Subscriptions/4eacb230-3e94-4bec-9cb8-2a5be79fb60e/Providers/Microsoft.Compute/Loca...
alces-flight-limited eastus     /Subscriptions/4eacb230-3e94-4bec-9cb8-2a5be79fb60e/Providers/Microsoft.Compute/Loca...
alertlogic         eastus     /Subscriptions/4eacb230-3e94-4bec-9cb8-2a5be79fb60e/Providers/Microsoft.Compute/Loca...
```

```
PS C:\Users\tmitchell> Get-AzureRmImageOffer -Location "EastUS" -PublisherName "MicrosoftWindowsServer"

Offer              PublisherName      Location Id
-----
Windows-HUB        MicrosoftWindowsServer eastus     /Subscriptions/4eacb230-3e94-4bec-9cb8-2a5be79fb60e/Providers/Microsoft.Compute/Locations/...
WindowsServer      MicrosoftWindowsServer eastus     /Subscriptions/4eacb230-3e94-4bec-9cb8-2a5be79fb60e/Providers/Microsoft.Compute/Locations/...
WindowsServerSemiAnnual MicrosoftWindowsServer eastus     /Subscriptions/4eacb230-3e94-4bec-9cb8-2a5be79fb60e/Providers/Microsoft.Compute/Locations/...

PS C:\Users\tmitchell>
```

```
PS C:\Users\tmitchell> Get-AzureRmImageSku -Location "EastUS" -PublisherName "MicrosoftWindowsServer" -Offer "WindowsServer"

Sku              Offer              PublisherName      Location Id
-----
2008-R2-SP1     WindowsServer      MicrosoftWindowsServer eastus     /Subscriptions/4eacb230-3e94-4bec-9cb8-2a5be79fb60e/Providers/...
2008-R2-SP1-smalldisk WindowsServer      MicrosoftWindowsServer eastus     /Subscriptions/4eacb230-3e94-4bec-9cb8-2a5be79fb60e/Providers/...
2012-Datacenter WindowsServer      MicrosoftWindowsServer eastus     /Subscriptions/4eacb230-3e94-4bec-9cb8-2a5be79fb60e/Providers/...
2012-Datacenter-smalldisk WindowsServer      MicrosoftWindowsServer eastus     /Subscriptions/4eacb230-3e94-4bec-9cb8-2a5be79fb60e/Providers/...
2012-R2-Datacenter WindowsServer      MicrosoftWindowsServer eastus     /Subscriptions/4eacb230-3e94-4bec-9cb8-2a5be79fb60e/Providers/...
2012-R2-Datacenter-smalldisk WindowsServer      MicrosoftWindowsServer eastus     /Subscriptions/4eacb230-3e94-4bec-9cb8-2a5be79fb60e/Providers/...
2016-Datacenter WindowsServer      MicrosoftWindowsServer eastus     /Subscriptions/4eacb230-3e94-4bec-9cb8-2a5be79fb60e/Providers/...
2016-Datacenter-Server-Core WindowsServer      MicrosoftWindowsServer eastus     /Subscriptions/4eacb230-3e94-4bec-9cb8-2a5be79fb60e/Providers/...
2016-Datacenter-Server-Core-smalldisk WindowsServer      MicrosoftWindowsServer eastus     /Subscriptions/4eacb230-3e94-4bec-9cb8-2a5be79fb60e/Providers/...
2016-Datacenter-smalldisk WindowsServer      MicrosoftWindowsServer eastus     /Subscriptions/4eacb230-3e94-4bec-9cb8-2a5be79fb60e/Providers/...
2016-Datacenter-with-Containers WindowsServer      MicrosoftWindowsServer eastus     /Subscriptions/4eacb230-3e94-4bec-9cb8-2a5be79fb60e/Providers/...
2016-Datacenter-with-RDSH WindowsServer      MicrosoftWindowsServer eastus     /Subscriptions/4eacb230-3e94-4bec-9cb8-2a5be79fb60e/Providers/...
2016-Nano-Server WindowsServer      MicrosoftWindowsServer eastus     /Subscriptions/4eacb230-3e94-4bec-9cb8-2a5be79fb60e/Providers/...
```

```

PS C:\Users\tmitchell> New-AzureRmVm
>> -ResourceGroupName "VMLab"
>> -Name "myVM2"
>> -Location "EastUS"
>> -VirtualNetworkName "myVnet"
>> -SubnetName "mySubnet"
>> -SecurityGroupName "myNSG"
>> -PublicIpAddressName "myPublicIpAddress2"
>> -ImageName "MicrosoftWindowsServer:WindowsServer:2016-Datacenter:latest"
>> -Credential $cred
>> -AsJob

Id      Name      PSJobTypeName  State      HasMoreData  Location      Command
--      -
1      Long Running... AzureLongRun... Running      True          localhost     New-AzureRmVM

```

```

ResourceGroupName : VMLab
Name              : myVM2
Disks[0]         :
  Name            : myVM2_OsDisk_1_f0ff24e333764ecbbe905dcd7a7da844
  Statuses[0]     :
    Code          : ProvisioningState/succeeded
    Level         : Info
    DisplayStatus : Provisioning succeeded
    Time          : 6/6/2018 10:18:56 AM
  Statuses[0]     :
    Code          : ProvisioningState/creating
    Level         : Info
    DisplayStatus : Creating
  Statuses[1]     :
    Code          : PowerState/running
    Level         : Info
    DisplayStatus : VM running

```

```

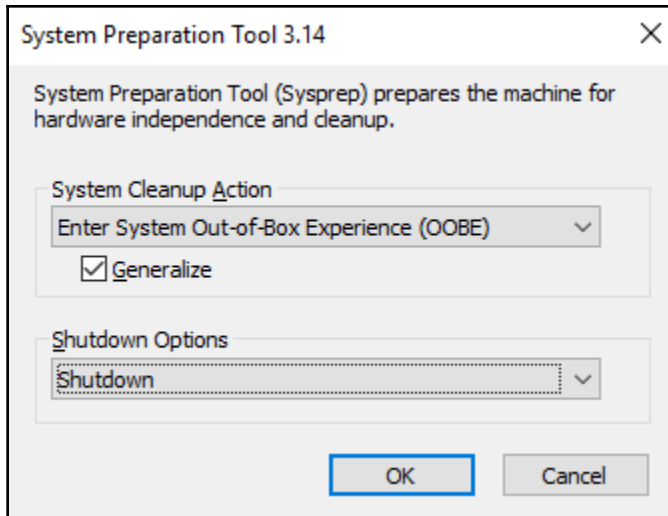
C:\> Administrator: Command Prompt

Microsoft Windows [Version 10.0.14393]
(c) 2016 Microsoft Corporation. All rights reserved.

C:\Users\localadmin>cd %windir%\system32\sysprep

C:\Windows\System32\Sysprep>sysprep.exe_

```

```
ResourceGroupName      : VMLab
SourceVirtualMachine  : Microsoft.Azure.Management.Compute.Models.SubResource
StorageProfile        : Microsoft.Azure.Management.Compute.Models.ImageStorageProfile
ProvisioningState      : Succeeded
Id                    : /subscriptions/0aec89a4-d5f8-4343-b43b-1ec899719dfe/resourceGroups/VMLab/providers/Microsoft.Compute/images/myImage
Name                  : myImage
Type                  : Microsoft.Compute/images
Location              : eastus
Tags                  : {}
```

```
Creating Azure resources
 32%
[ooooooooooooooooooooooooooooooooooooooooooooooooooooooooooooo]
Creating virtualMachines/myVM3.

ResourceGroupName      : VMLab
SourceVirtualMachine  : Microsoft.Azure.Management.Compute.Models.SubResource
StorageProfile        : Microsoft.Azure.Management.Compute.Models.ImageStorageProfile
ProvisioningState      : Succeeded
Id                    : /subscriptions/0aec89a4-d5f8-4343-b43b-1ec899719dfe/resourceGroups/VMLab/providers/Microsoft.Compute/images/myImage
Name                  : myImage
Type                  : Microsoft.Compute/images
Location              : eastus
Tags                  : {}

PS C:\Users\tmitchell> New-AzureRmVm `
>> -ResourceGroupName "VMLab"
>> -Name "myVM3"
>> -ImageName "myImage"
>> -Location "EastUS"
>> -VirtualNetworkName "myVnet"
>> -SubnetName "mySubnet"
>> -SecurityGroupName "myNSG"
>> -PublicIpAddressName "myPublicIP3"

cmdlet New-AzureRmVm at command pipeline position 1
Supply values for the following parameters:
Credential
WARNING: New-AzureRmVm: A property of the output of this cmdlet will change in an upcoming breaking change release. The StorageAccountType property
for a DataDisk will return Standard_LRS and Premium_LRS
```

```
PS C:\Users\tmitchell> Remove-AzureRmImage `
>> -ImageName myImage `
>> -ResourceGroupName VMLab

Remove-AzureRmImage operation
This cmdlet will remove the specified resource. Do you want to continue?
[Y] Yes [N] No [S] Suspend [?] Help (default is "Y"):
```

Chapter 3: Working with Disks

```
PS C:\Users\tmitchell> Update-AzureRmVm -ResourceGroupName "VMLab" -VM $vm

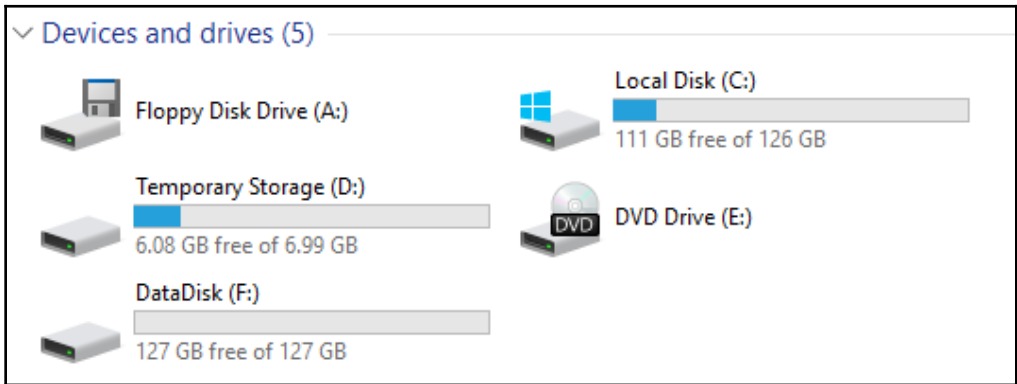
RequestId IsSuccessStatusCode StatusCode ReasonPhrase
-----
True      OK OK
```

```
Windows PowerShell
Copyright (C) 2016 Microsoft Corporation. All rights reserved.

PS C:\Users\localadmin> Get-Disk | Where partitionstyle -eq 'raw' | `
>> Initialize-Disk -PartitionStyle MBR -PassThru | `
>> New-Partition -AssignDriveLetter -UseMaximumSize | `
>> Format-Volume -FileSystem NTFS -NewFileSystemLabel "DataDisk" -Confirm:$false

DriveLetter FileSystemLabel FileSystem DriveType HealthStatus OperationalStatus SizeRemaining Size
-----
F           DataDisk      NTFS      Fixed    Healthy      OK                127.89 GB 128 GB

PS C:\Users\localadmin> _
```



```
PS C:\Users\tmitchell> $resourceGroupName = 'VMLab'
PS C:\Users\tmitchell> $location = 'EastUS'
PS C:\Users\tmitchell> $vmName = 'myVM3'
PS C:\Users\tmitchell> $snapshotName = 'mySnapshot'
```

```

ResourceGroupName : VMLab
ManagedBy        :
Sku               : Microsoft.Azure.Management.Compute.Models.SnapshotSku
TimeCreated       : 6/6/2018 7:48:07 AM
OsType            : Windows
CreationData      : Microsoft.Azure.Management.Compute.Models.CreationData
DiskSizeGB        : 127
EncryptionSettings :
ProvisioningState : Succeeded
Id                : /subscriptions/0aec89a4-d5f8-4343-b43b-1ec899719dfe/resourceGroups/VMLab/providers/Microsoft.Compute/snapshots/mySnapshot
Name              : mySnapshot
Type              : Microsoft.Compute/snapshots
Location          : eastus
Tags              : {}

```

```

RequestId IsSuccessStatusCode StatusCode ReasonPhrase
-----
True      OK OK

```

```

PS C:\Users\tmitchell> Set-AzureRmDiskEncryptionExtension -ResourceGroupName $rgName `
>> -VMName "myVM9" `
>> -AadClientID $app.ApplicationId `
>> -AadClientSecret (New-Object PSObject ($credential.UserName, $credential.Password)).Password `
>> -DiskEncryptionKeyVaultUrl $diskEncryptionKeyVaultUrl `
>> -DiskEncryptionKeyVaultId $keyVaultResourceId `
>> -KeyEncryptionKeyUrl $keyEncryptionKeyUrl `
>> -KeyEncryptionKeyVaultId $keyVaultResourceId

Enable AzureDiskEncryption on the VM
This cmdlet prepares the VM and enables encryption which may reboot the machine and takes 10-15 minutes to finish. Please save your work on the VM before confirming. Do you want to
continue?
[Y] Yes [N] No [S] Suspend [?] Help (default is "Y"): y

RequestId IsSuccessStatusCode StatusCode ReasonPhrase
-----
True      OK OK

```

```

PS C:\Users\tmitchell> Get-AzureRmVmDiskEncryptionStatus -ResourceGroupName $rgName -VMName "myVM9"

OsVolumeEncrypted      : Encrypted
DataVolumesEncrypted   : Encrypted
OsVolumeEncryptionSettings : Microsoft.Azure.Management.Compute.Models.DiskEncryptionSettings
ProgressMessage         : OsVolume: Encrypted, DataVolumes: Encrypted

PS C:\Users\tmitchell>

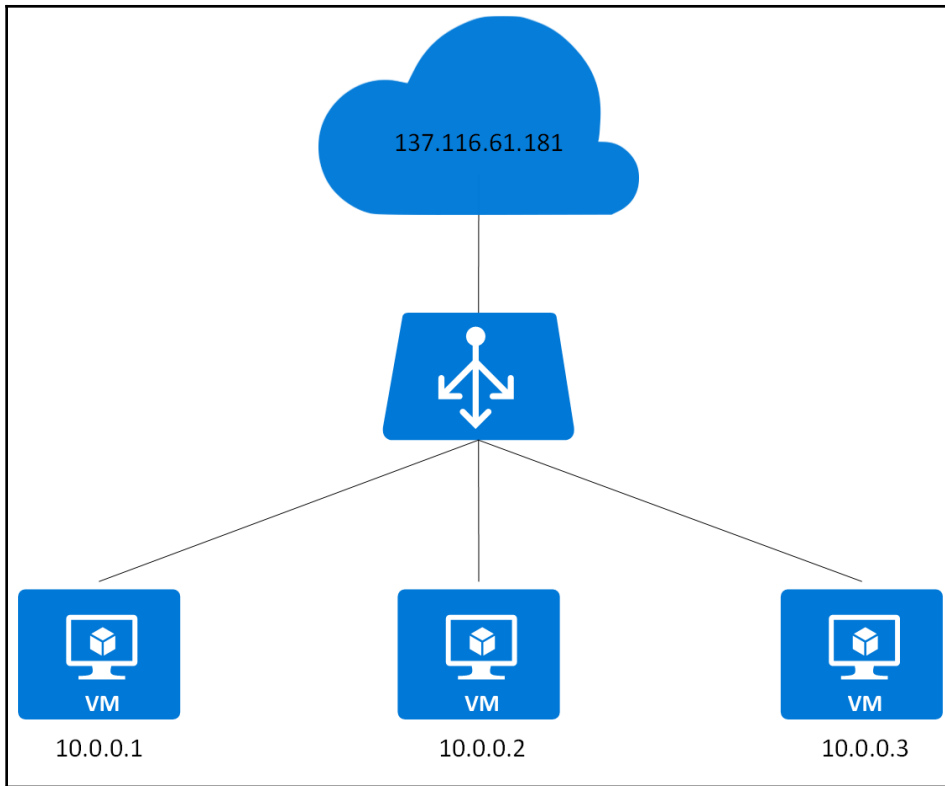
```

Chapter 4: High Availability

```
PS C:\Users\tmitchell> New-AzureRmAvailabilitySet `
>> -Location "eastus" `
>> -Name "myAvailabilitySet" `
>> -ResourceGroupName "VMLab" `
>> -Sku aligned `
>> -PlatformFaultDomainCount 2 `
>> -PlatformUpdateDomainCount 2
ResourceGroupName      : VMLab
Id                    : /subscriptions/0aec89a4-d5f8-4343-b43b-1ec899719dfe/resourceGroups/VMLab/providers/Microsoft.Compute/availabilitySets/myA
vailabilitySet
Name                  : myAvailabilitySet
Type                  : Microsoft.Compute/availabilitySets
Location              : eastus
Managed              : True
Sku                   : Aligned
Tags                  : {}
PlatformFaultDomainCount : 2
PlatformUpdateDomainCount : 2
Statuses              : []
VirtualMachinesReferences : []
```

ResourceGroupName	Name	Location	VmSize	OsType	NIC	ProvisioningState	Zone
VMLAB	myVM1	eastus	Standard_DS1_v2	Windows	myVM1	Succeeded	
VMLAB	myVM2	eastus	Standard_DS1_v2	Windows	myVM2	Creating	

```
PS C:\Users\tmitchell> Get-AzureRmAvailabilitySet -ResourceGroupName "VMLab" -Name "MyAvailabilitySet"
ResourceGroupName      : VMLab
Id                    : /subscriptions/0aec89a4-d5f8-4343-b43b-1ec899719dfe/resourceGroups/VMLab/providers/Microsoft.Compute/availabilitySets/myA
vailabilitySet
Name                  : myAvailabilitySet
Type                  : Microsoft.Compute/availabilitySets
Location              : eastus
Managed              : True
Sku                   : Aligned
Tags                  : {}
PlatformFaultDomainCount : 2
PlatformUpdateDomainCount : 2
Statuses              : []
VirtualMachinesReferences : [
  {
    "id": "/subscriptions/0aec89a4-d5f8-4343-b43b-1ec899719dfe/resourceGroups/VMLAB/providers/Microsoft.Compute/virtualMa
chines/MYVM1"
  },
  {
    "id": "/subscriptions/0aec89a4-d5f8-4343-b43b-1ec899719dfe/resourceGroups/VMLAB/providers/Microsoft.Compute/virtualMa
chines/MYVM2"
  }
]
```



```

PS C:\Users\tmitchell> Set-AzureRmLoadBalancer -LoadBalancer $l1b

Name                : myLoadBalancer
ResourceGroupName  : VMlab
Location            : eastus
Id                  : /subscriptions/0aec89a4-d5f8-4343-b43b-1ec899719dfe/resourceGroups/VMlab/providers/Microsoft.Network/loadBalancers/myLoadBalancer
Etag                : W/"b6dace60-6a59-4e51-aeb4-cc9d20a31d6c"
ResourceGuid       : 2844fcae-cf15-4b51-96d2-560fc2d5cccb
ProvisioningState   : Succeeded
Tags                :
FrontendIPConfigurations : [
  {
    "Zones": [],
    "Name": "myFrontEndPool",
    "Etag": "W/"b6dace60-6a59-4e51-aeb4-cc9d20a31d6c\"",
    "Id": "/subscriptions/0aec89a4-d5f8-4343-b43b-1ec899719dfe/resourceGroups/VMlab/providers/Microsoft.Network/loadBalancers/myLoadBalancer/frontendIPConfigurations/myFrontEndPool",
    "PrivateIPAllocationMethod": "Dynamic",
    "PublicIpAddress": {
  
```

```
        "BackendPort": 80,  
        "Protocol": "Tcp"  
    }  
    ]  
    Probes  
    : [   
      {  
        "Name": "myHealthProbe",  
        "Id": "/subscriptions/0aec89a4-d5f8-4343-b43b-1ec899719dfe/resourceGroups/VMLab/providers/Microsoft.Network/loadBalancers/myLoadBalancer/probes/myHealthProbe",  
        "Protocol": "tcp",  
        "Port": 80,  
        "IntervalInSeconds": 15,  
        "NumberOfProbes": 2
```

Chapter 5: Other Cool Stuff

```
ResourceGroupName      : VMLab
Id                     : /subscriptions/0aec89a4-d5f8-4343-b43b-1ec899719dfe/resourceGroups/VMLab/providers/Microsoft.Compute
VmId                   : 8e3c6f95-d646-4850-9250-7995446f024c
Name                   : myVM3
Type                   : Microsoft.Compute/virtualMachines
Location               : eastus
Tags                   : {}
AvailabilitySetReference : {Id}
Extensions              : {IIS}
HardwareProfile         : {VmSize}
NetworkProfile          : {NetworkInterfaces}
OSProfile               : {ComputerName, AdminUsername, WindowsConfiguration, Secrets}
ProvisioningState       : Succeeded
StorageProfile          : {ImageReference, OsDisk, DataDisks}
```

```
PS C:\Users\tmitchell> $tags = (Get-AzureRmResource -ResourceGroupName VMLab -Name MyVM3).Tags
PS C:\Users\tmitchell> $tags
PS C:\Users\tmitchell>
```

```
PS C:\Users\tmitchell> Set-AzureRmResource `
>> -ResourceGroupName VMLab `
>> -Name MyVM3 `
>> -ResourceType "Microsoft.Compute/VirtualMachines" `
>> -Tag @{}

Confirm
Are you sure you want to update the following resource: /subscriptions/0aec89a4-d5f8-4343-b43b-1ec899719dfe/resourceGroups/VMLab/providers/Microsoft.Compute/VirtualMachines/MyVM3
[Y] Yes [N] No [S] Suspend [?] Help (default is "Y"): y
```


Select server roles

- Before You Begin
- Installation Type
- Server Selection
- Server Roles**
- Features
- Confirmation
- Results

Select one or more roles to install on the selected server.

Roles

- Active Directory Lightweight Directory Services
- Active Directory Rights Management Services
- Device Health Attestation
- DHCP Server
- DNS Server
- Fax Server
- File and Storage Services (1 of 12 installed)
 - Host Guardian Service
 - Hyper-V
 - MultiPoint Services
 - Network Controller
 - Network Policy and Access Services
 - Print and Document Services (1 of 4 installed)**
 - Print Server (Installed)
 - Distributed Scan Server
 - Internet Printing
 - LPD Service
 - Remote Access
 - Remote Desktop Services
 - Volume Activation Services

Description

Print and Document Services enables you to centralize print server and network printer management tasks. With this role, you can also receive scanned documents from network scanners and route the documents to a shared network resource, Windows SharePoint Services site, or e-mail addresses.