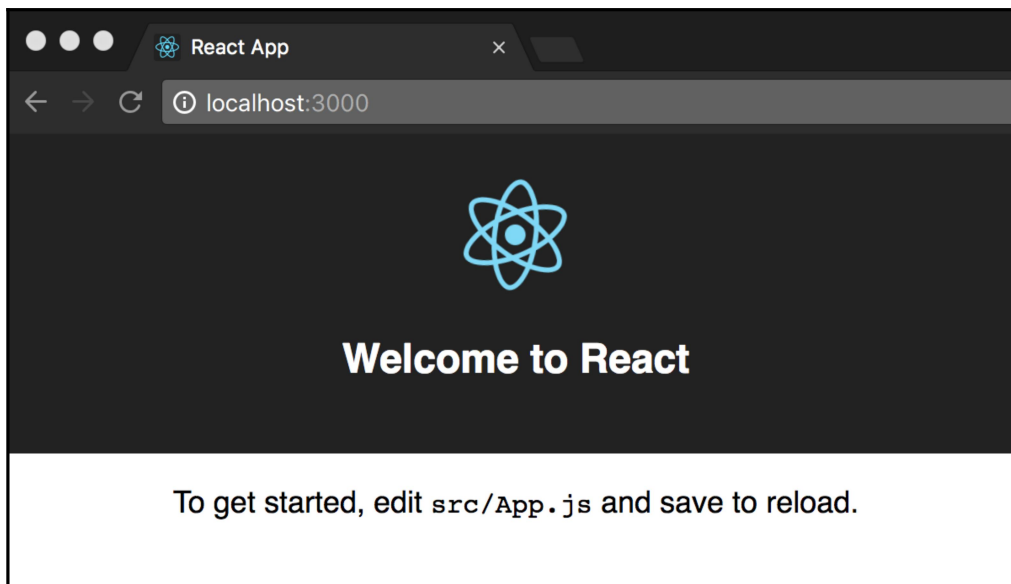
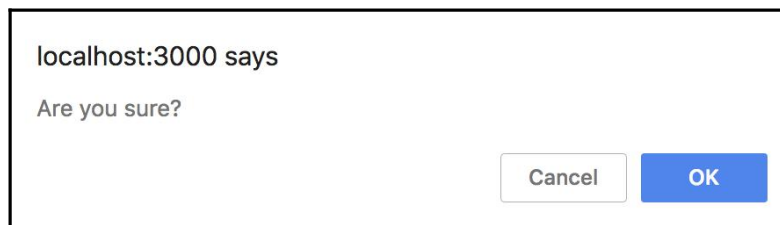
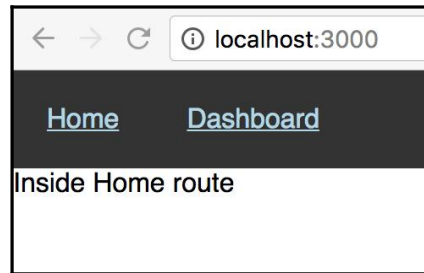


Chapter 1: Introduction to React Router 4 and Creating Your First Route

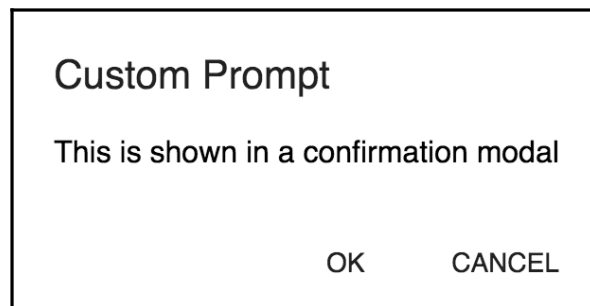
```
▼ <div id="root">  
  ▼ <div class="App">  
    <button class="secondary">CANCEL</button>  
    <button class="primary">OK</button>  
  </div>  
</div>
```



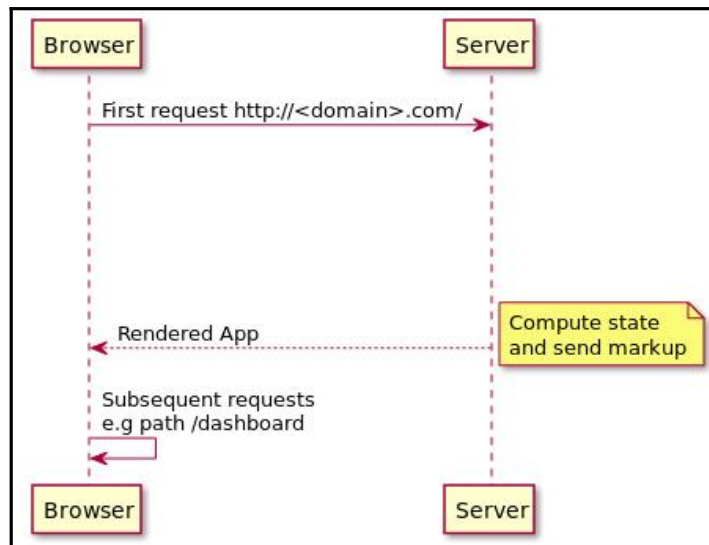
Chapter 3: Using the Link and NavLink Components to Navigate to a Route



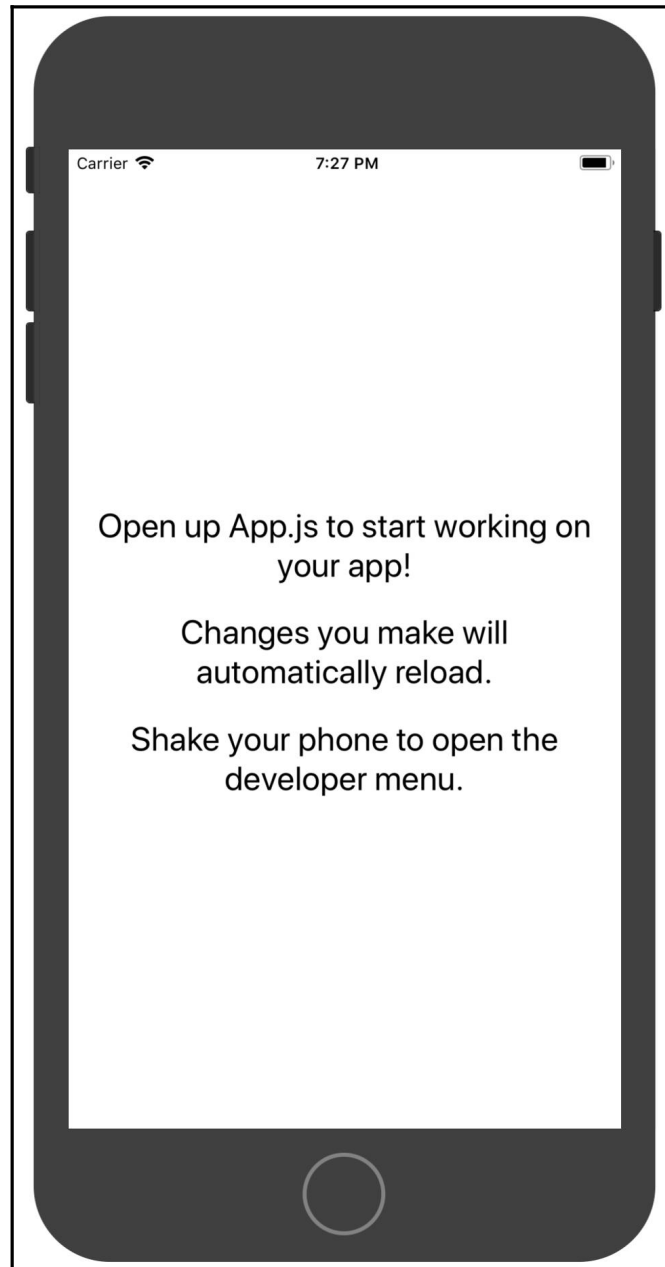
Chapter 5: Understanding the Core Router, and Configuring the BrowserRouter and HashRouter components

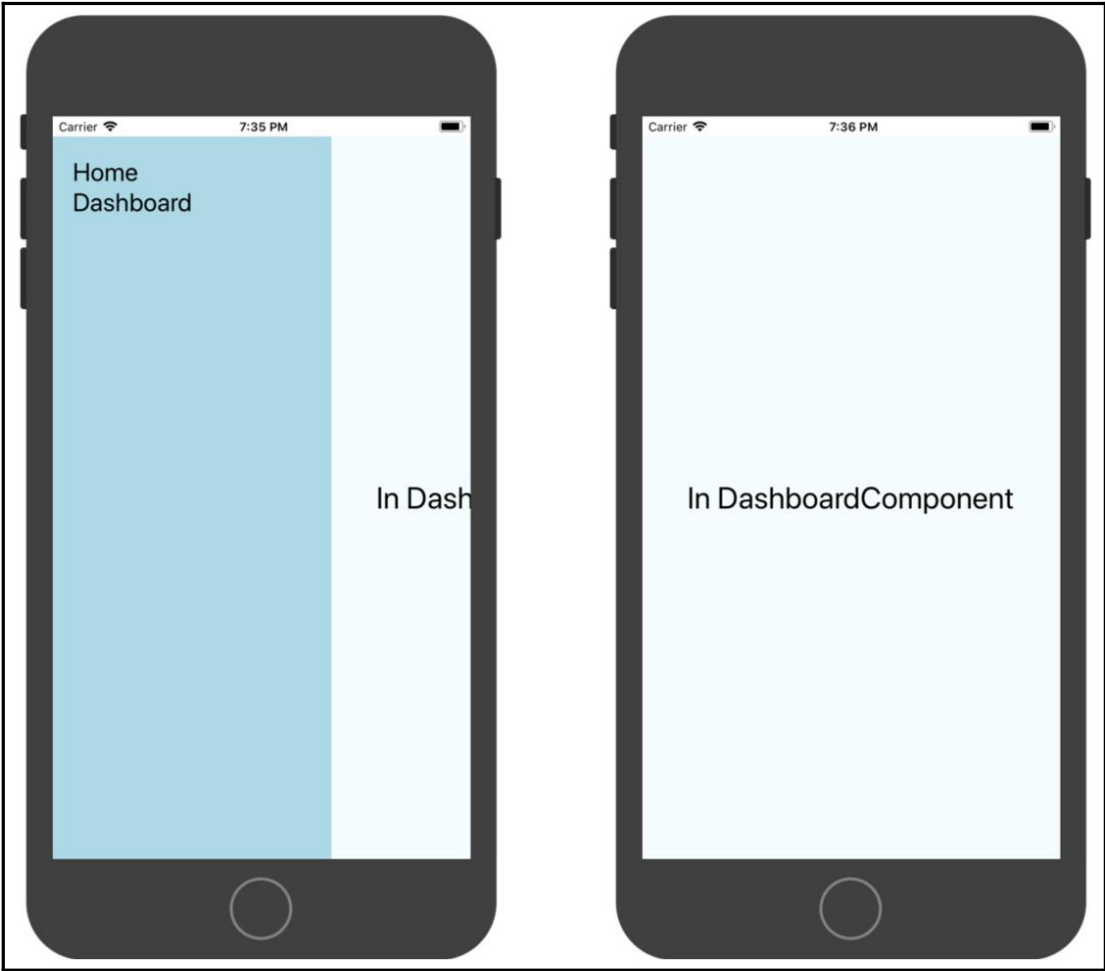


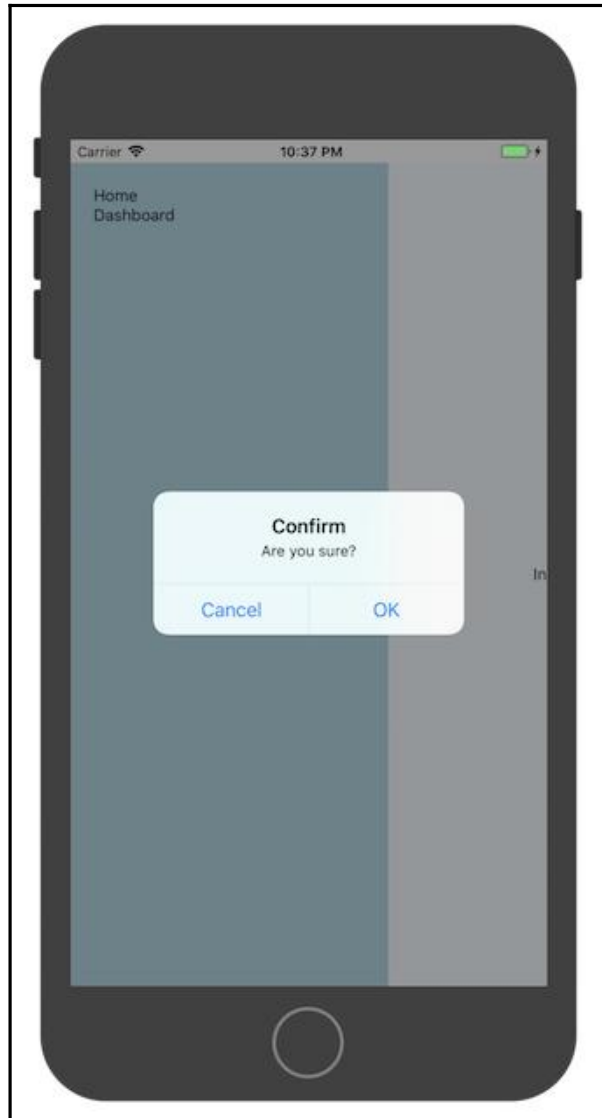
Chapter 6: Using StaticRouter in a Server-Side Rendered React Application

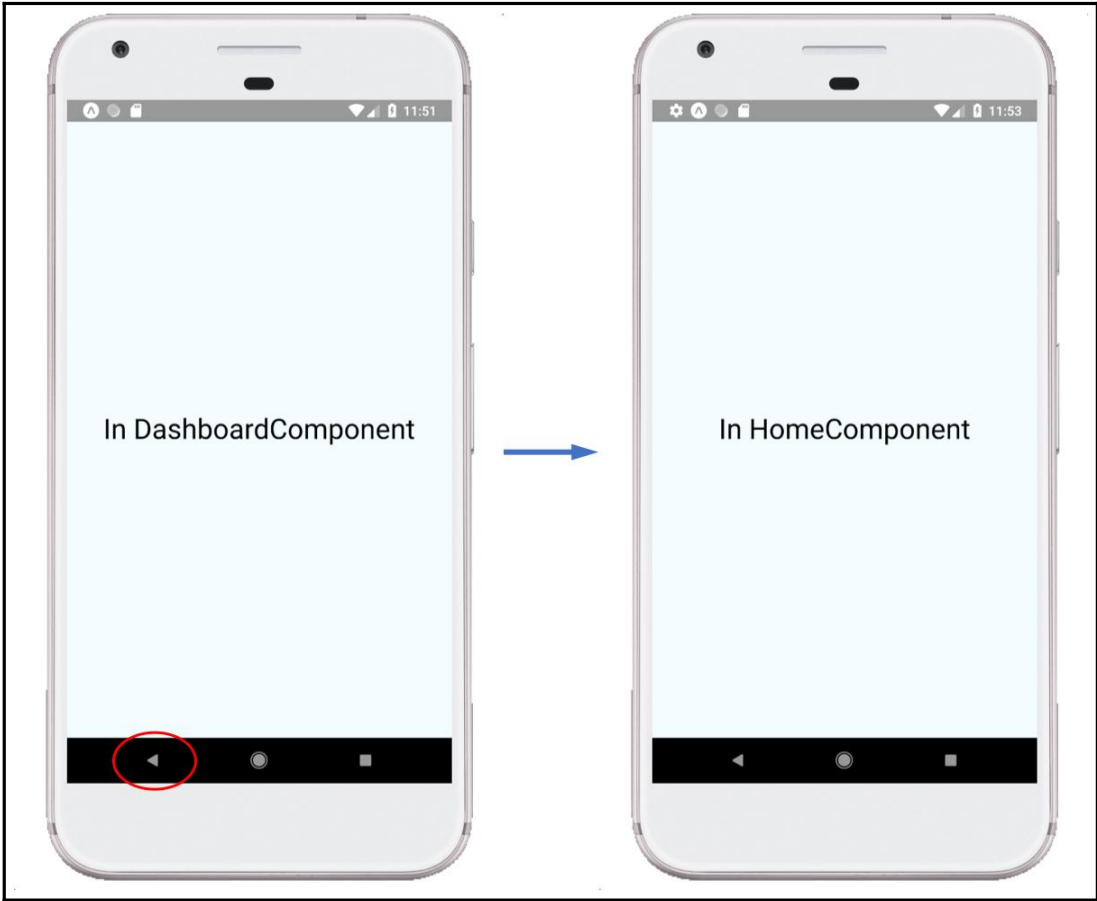


Chapter 7: Using NativeRouter in a React Native Application

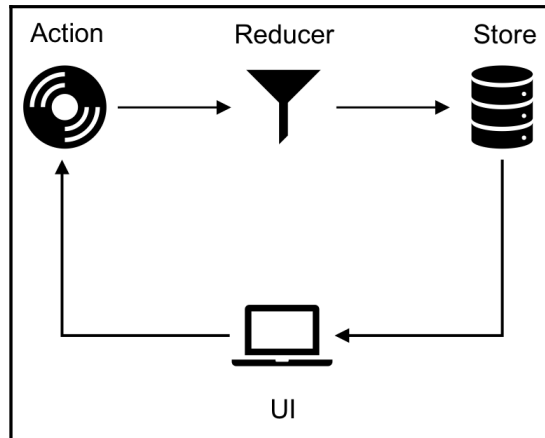








Chapter 8: Redux Bindings with connected-react-router



DevTools - localhost:3000/

Elements Console Redux >>

Inspector React App

filter...

@@@INIT 10:57:38.18

@@router/LOCATION_CHANGE +30:00.01

@@router/LOCATION_CHANGE +31:50.68

Action Action State Diff Test

Tree Chart Raw

```
type (pin): "@@router/LOCATION_CHANGE"
payload (pin)
  location (pin)
    pathname (pin): "/dashboard"
    search (pin): "?q=1"
    hash (pin): "#test"
  state (pin)
    key (pin): "value "
    key (pin): "v00rph"
    action (pin): "PUSH"
```

⌵ ⌵ ⌵ ⏸ 🔒 📌 🗃 ⌚ ⬆ ⬇ ⌵