

Chapter 1: Introduction

```
[root@caladan ~]# ssh reader@localhost -p 10022
reader@localhost's password:
Welcome to Ubuntu 18.04 LTS (GNU/Linux 4.15.0-23-generic x86_64)

 * Documentation:  https://help.ubuntu.com
 * Management:    https://landscape.canonical.com
 * Support:       https://ubuntu.com/advantage

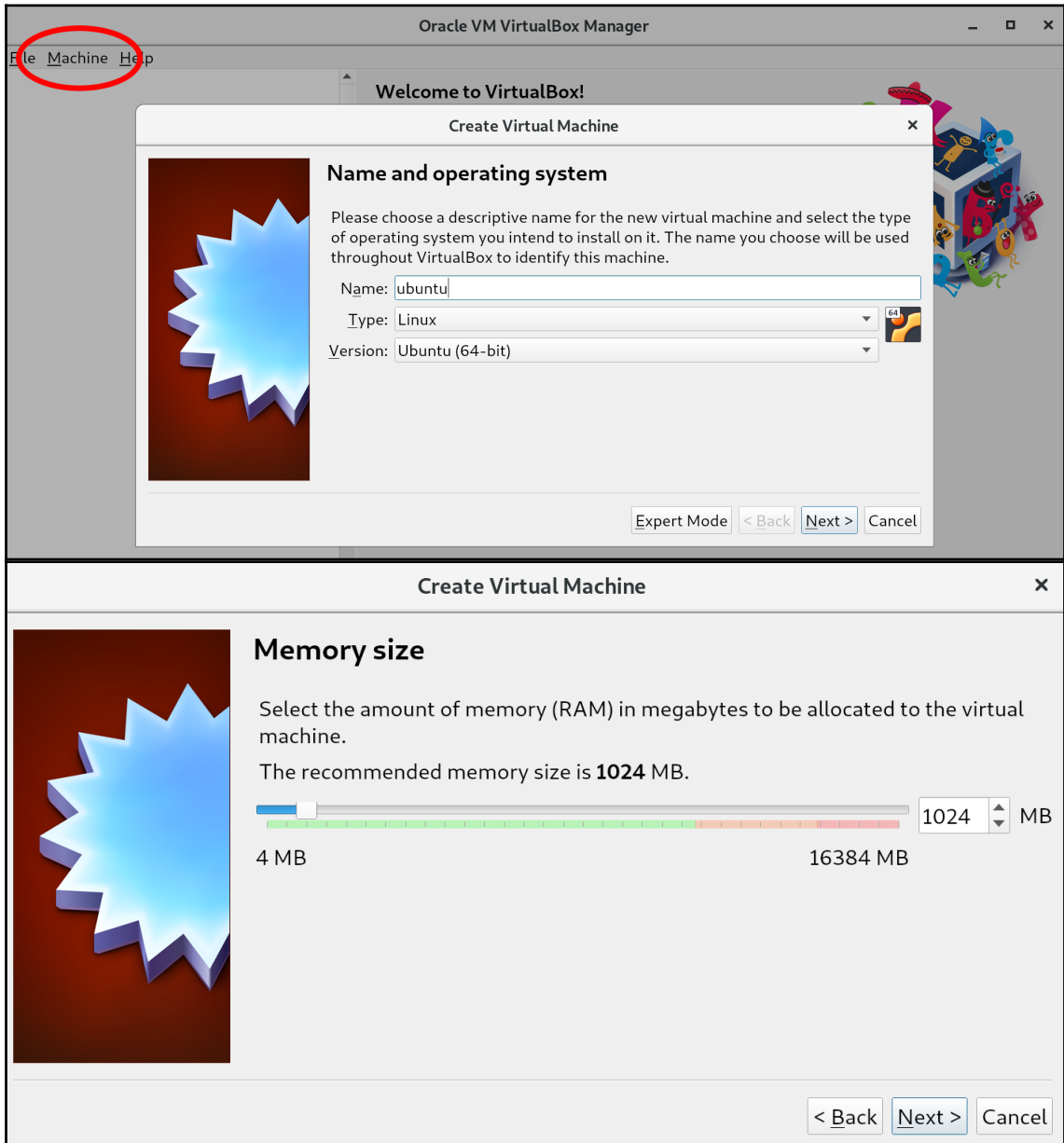
System information as of Fri Jun 22 14:20:02 UTC 2018

System load:  0.13                       Processes:            89
Usage of /:   42.0% of 9.78GB             Users logged in:     1
Memory usage: 12%                         IP address for enp0s3: 10.0.2.15
Swap usage:   0%

0 packages can be updated.
0 updates are security updates.

Last login: Fri Jun 22 14:19:29 2018 from 10.0.2.2
reader@ubuntu:~$ █
```

Chapter 2: Setting Up Your Local Environment



Create Virtual Machine x



Hard disk

If you wish you can add a virtual hard disk to the new machine. You can either create a new hard disk file or select one from the list or from another location using the folder icon.

If you need a more complex storage set-up you can skip this step and make the changes to the machine settings once the machine is created.

The recommended size of the hard disk is **10.00 GB**.

Do not add a virtual hard disk


Create a virtual hard disk now

Use an existing virtual hard disk file

Empty v

< Back Create Cancel

Create Virtual Hard Disk x



Hard disk file type

Please choose the type of file that you would like to use for the new virtual hard disk. If you do not need to use it with other virtualization software you can leave this setting unchanged.


VDI (VirtualBox Disk Image)

VHD (Virtual Hard Disk)

VMDK (Virtual Machine Disk)

Expert Mode < Back Next > Cancel

Create Virtual Hard Disk x



Storage on physical hard disk

Please choose whether the new virtual hard disk file should grow as it is used (dynamically allocated) or if it should be created at its maximum size (fixed size).

A **dynamically allocated** hard disk file will only use space on your physical hard disk as it fills up (up to a maximum **fixed size**), although it will not shrink again automatically when space on it is freed.


A **fixed size** hard disk file may take longer to create on some systems but is often faster to use.

Dynamically allocated

Fixed size


< Back Next > Cancel

Create Virtual Hard Disk x



File location and size

Please type the name of the new virtual hard disk file into the box below or click on the folder icon to select a different folder to create the file in.

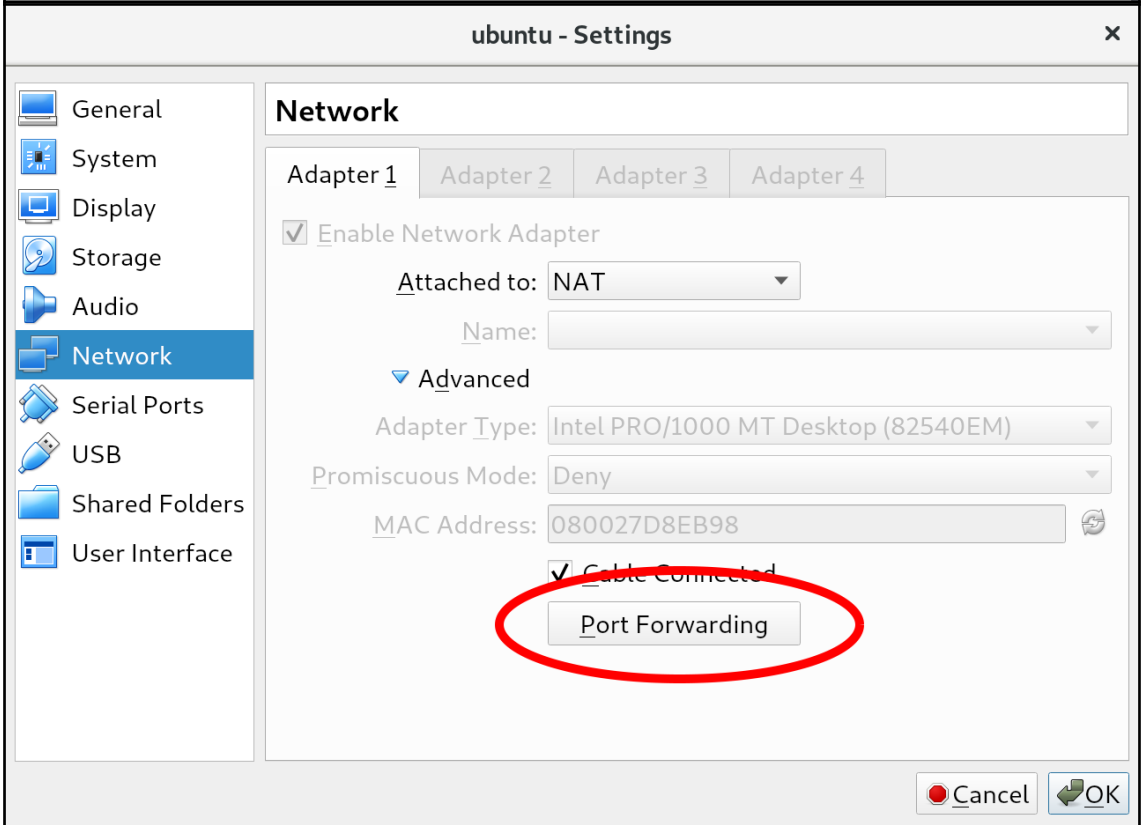
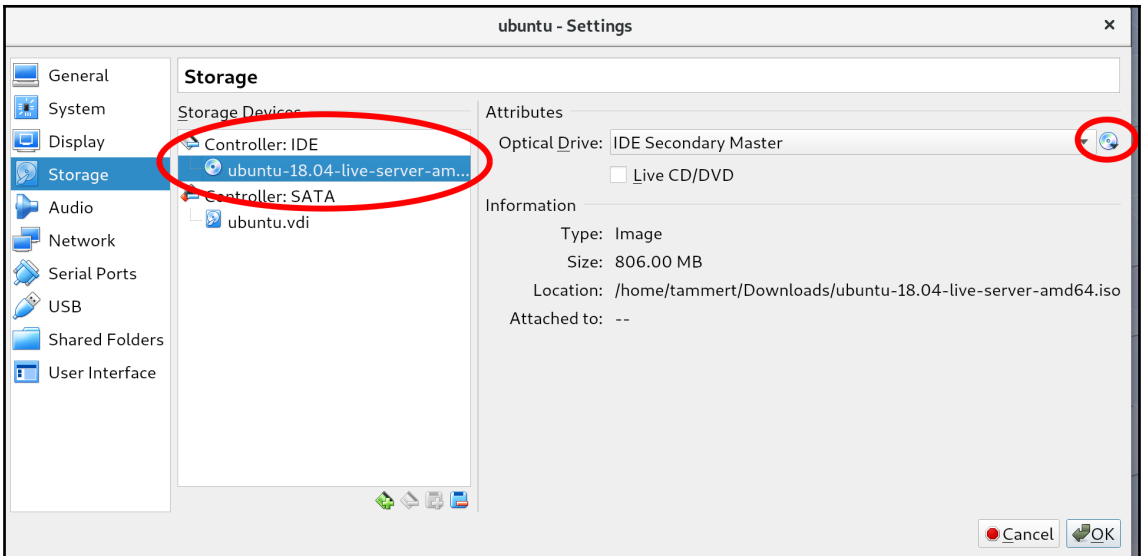
ubuntu 

Select the size of the virtual hard disk in megabytes. This size is the limit on the amount of file data that a virtual machine will be able to store on the hard disk.

4.00 MB 10.00 GB

2.00 TB

< Back Create Cancel



Port Forwarding Rules

Name	Protocol	Host IP	Host Port	Guest IP	Guest Port
SSH	TCP		2222		22

Willkommen! Bienvenue! Welcome! Добро пожаловать! Welkom!

Please choose your preferred language

- English >
- Asturianu >
- Català >
- Hrvatski >
- Nederlands >
- Suomi >
- Deutsch >
- Ελληνικά >
- Magyar >
- Latviešu >
- Norsk bokmål >
- Polski >
- Русский >
- Español >
- Українська >

1 / 9

Use UP, DOWN and ENTER keys to select your language.

Keyboard configuration

Please select your keyboard layout below, or select "Identify keyboard" to detect your layout automatically.

Layout: (+) English (US)

Variant: (+) English (US) - English (US, intl., with dead keys)

[Identify keyboard]

[Done]

[Back]

2 / 9

Use UP, DOWN and ENTER keys to select your keyboard.

Ubuntu 18.04

Welcome to Ubuntu! The world's favourite platform for clouds, clusters, and amazing internet things. This is the installer for Ubuntu on servers and internet devices.

Install Ubuntu >

Install MAAS bare-metal cloud (region) >

Install MAAS bare-metal cloud (rack) >

[Back]

3 / 9

Use UP, DOWN arrow keys, and ENTER, to navigate options

Network connections

Configure at least one interface this server can use to talk to other machines, and which preferably provides sufficient access for updates.

enp0s3 > Will use DHCP for IPv4, currently has address: 10.0.2.15
Has no IPv6 configuration, currently has address: fe80::a00:27ff:fed8:eb98
08:00:27:d8:eb:98 Intel 82540EM Gigabit (1G)

[Done]

[Back]

4 / 9

Select an interface to configure it or select Done to continue

Configure proxy

If this system requires a proxy to connect to the internet, enter its details here.

Proxy address:

If you need to use a HTTP proxy to access the outside world, enter the proxy information here. Otherwise, leave this blank.

The proxy information should be given in the standard form of "http://[[user] [:pass]@]host[:port]/".

[Done]

[Cancel]

4 / 9

Select an interface to configure it or select Done to continue

Filesystem setup

The installer can guide you through partitioning an entire disk or, if you prefer, you can do it manually.

If you choose to partition an entire disk you will still have a chance to review and modify the results.

[Use An Entire Disk]
[Manual]
[Back]

6 / 9

Choose guided or manual partitioning

Filesystem setup

FILE SYSTEM SUMMARY

MOUNT POINT	SIZE	TYPE	DEVICE TYPE
/	9.997G	ext4	partition of local disk

AVAILABLE DEVICES

DEVI
VBOX
pa
pa
Ed

Confirm destructive action

Selecting Continue below will begin the installation process and result in the loss of data on the disks selected to be formatted.

You will not be able to return to this or a previous screen once the installation has started.

Are you sure you want to continue?

[No]
[Continue]

Filesystem setup

FILE SYSTEM SUMMARY

MOUNT POINT	SIZE	TYPE	DEVICE TYPE
/	9.997G	ext4	partition of local disk

AVAILABLE DEVICES

DEVICE	SIZE	TYPE
VBOX_HARDDISK_VB3f7c1408-18c08da9	9.998G	local disk
partition 1, bios_grub	1.000M (0%)	
partition 2, ext4, /	9.997G (99%)	
Edit Partitions		>

[Done]
[Reset]
[Back]

6 / 9

Select available disks to format and mount

Profile setup

Enter the username and password (or ssh identity) you will use to log in to the system.

Your name:

Your server's name:

The name it uses when it talks to other computers.

Pick a username:

Choose a password:

Confirm your password:

Import SSH identity:

You can import your SSH keys from Github or Launchpad.

Import Username:

[Done]

8 / 9

Install complete

Install complete!

```
----- Finished install! -----
  configuring mount: mount-0
configuring network
  running 'curtin net-meta auto'
  curtin command net-meta
writing install sources to disk
  running 'curtin extract'
  curtin command extract
  acquiring and extracting image from cp:///media/filesystem
configuring installed system
  running 'curtin curthooks'
  curtin command curthooks
  configuring apt configuring apt
  installing missing packages
  installing kernel
  setting up swap
  apply networking config
  writing etc/fstab
  configuring multipath
  updating packages on target system
  configuring pollinate user-agent on target system
finalizing installation
  running 'curtin hook'
  curtin command hook
executing late commands
```

[View full log]

[Reboot Now]

9 / 9

Thank you for using Ubuntu!

```
Ubuntu 18.04 LTS ubuntu tty1
ubuntu login: _
```

Ubuntu 18.04 LTS ubuntu tty1

ubuntu login: reader

Password:

Welcome to Ubuntu 18.04 LTS (GNU/Linux 4.15.0-23-generic x86_64)

- * Documentation: <https://help.ubuntu.com>
- * Management: <https://landscape.canonical.com>
- * Support: <https://ubuntu.com/advantage>

System information as of Fri Jun 22 14:06:25 UTC 2018

System load:	0.64	Processes:	85
Usage of /:	39.7% of 9.78GB	Users logged in:	0
Memory usage:	12%	IP address for enp0s3:	10.0.2.15
Swap usage:	0%		

90 packages can be updated.
43 updates are security updates.

The programs included with the Ubuntu system are free software; the exact distribution terms for each program are described in the individual files in /usr/share/doc/*/copyright.

Ubuntu comes with ABSOLUTELY NO WARRANTY, to the extent permitted by applicable law.

To run a command as administrator (user "root"), use "sudo <command>". See "man sudo_root" for details.

reader@ubuntu:~\$ _

Chapter 3: Choosing the Right Tools

The screenshot displays the Atom text editor's interface. At the top, a menu bar includes 'View', 'Selection', 'Find', 'Packages', and 'Help'. Below the menu, there are tabs for 'untitled', 'Telemetry Consent', 'Welcome', and 'Welcome Guide'. The main area is split into two panes. The left pane features the Atom logo, the text 'ATOM', and the tagline 'A hackable text editor for the 21st Century'. It also includes links to 'Atom docs', 'Atom forum', and 'Atom org'. The right pane, titled 'Welcome Guide', contains a list of actions: 'Open a Project', 'Version control with Git and GitHub', 'Collaborate in real time with Teletype', 'Install a Package', and 'Choose a Theme'. Below the panes, a '+ Install Packages' section is visible, showing a search bar with 'bash' entered, a 'Packages' button, and a list of search results. The first result is 'autocomplete-bash-builtins 0.3.5' by 'JASONews', with 17,135 installations and an 'Install' button.

View Selection Find Packages Help

untitled Telemetry Consent Welcome Welcome Guide

ATOM

A hackable text editor for the 21st Century

please visit

Atom docs for Guides and the API reference.
Atom forum at discuss.atom.io
Atom org. This is where all GitHub-created Atom packages can be found.

Welcome Guide when opening Atom

atom.io ×

Get to know Atom!

- Open a Project
- Version control with Git and GitHub
- Collaborate in real time with Teletype
- Install a Package
- Choose a Theme

+ Install Packages

ⓘ Packages are published to atom.io and are installed to `/home/tammert/.atom/packages`

bash Packages Themes

autocomplete-bash-builtins 0.3.5 📦 17,135

An autocomplete for common used bash builtin variables and functions

JASONews Install

File Edit View Selection Find Packages Help

Project

- learn_linux_shell_scripting
 - .git
 - chapter_07
 - hello_world.sh
 - chapter_08
 - chapter_09
 - chapter_10

hello_world.sh

```
1 #!/usr/bin/env bash
2
3 ec
```

f	echo	echo
f	exec	exec

Shell builtin function 'echo'
More..

learn_linux_shell_scripting

```
1 #!/usr/bin/env bash
2
3 echo "Hello World!"
4
```

Unstaged Changes

No changes

Staged Changes

No changes

Commit message

+

Commit to master

Hello world!

```
File Edit Search View Encoding Language Settings Tools Macro Run Plugins Window ?
hello_world.sh x
1  #!/bin/bash
2
3  echo "Hello World!"
4
length:36 lines:4 Ln:4 Col:1 Sel:0|0 Windows (CR LF) UTF-8 IN
VIM - Vi IMproved
      version 8.0.1453
      by Bram Moolenaar et al.
Modified by pkg-vim-maintainers@lists.aliases.debian.org
Vim is open source and freely distributable

      Help poor children in Uganda!
type  :help iccf<Enter>      for information

type  :q<Enter>              to exit
type  :help<Enter> or <F1>   for on-line help
type  :help version8<Enter> for version info

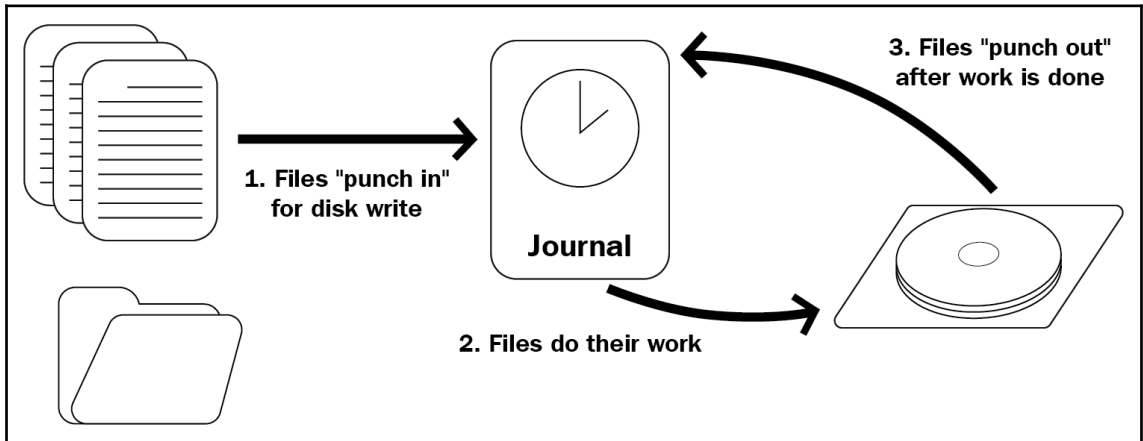
0,0-1 All
File Edit View Search Terminal Help
This is insert mode! We can now enter any text we like, since our keyboard
actions will not be interpreted.
~
~
~
-- INSERT -- 1,108 All
File Edit View Search Terminal Help
This is insert mode! We can now enter any text we like, since our keyboard
actions will not be interpreted.
~
~
1,107 All
GNU nano 2.9.3 New Buffer

^G Get Help ^O Write Out ^W Where Is ^K Cut Text ^J Justify ^C Cur Pos
^X Exit ^R Read File ^\ Replace ^U Uncut Text ^T To Spell ^_ Go To Line
```

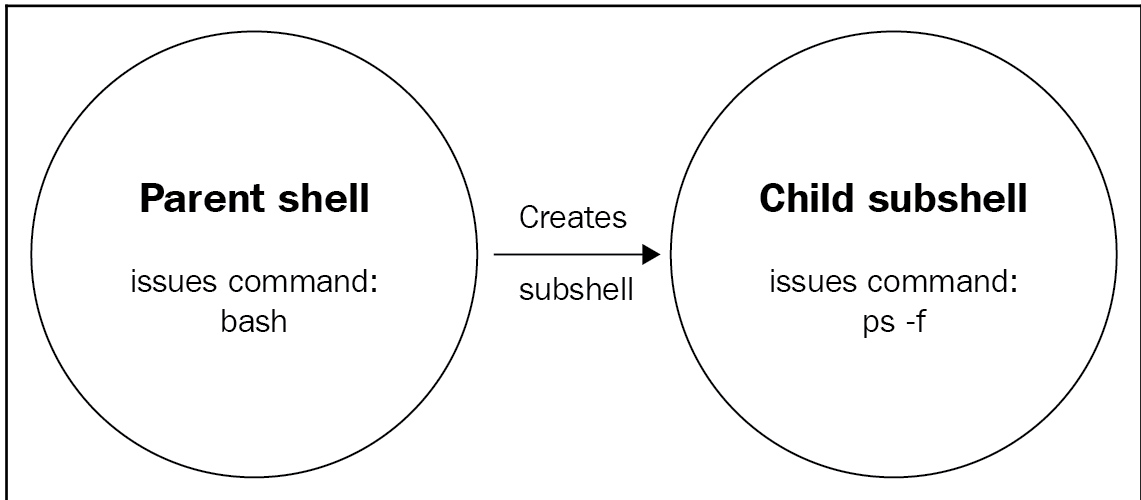


```
GNU nano 2.9.3                               New Buffer                               Modified
Wow, nano is so easy to use! Why didn't anyone think of this before?
^G Get Help      ^O Write Out     ^W Where Is     ^K Cut Text     ^J Justify
^X Exit          ^R Read File     ^\ Replace      ^U Uncut Text   ^T To Spell
GNU nano 2.9.3                               New Buffer                               Modified
Wow, nano is so easy to use! Why didn't anyone think of this before?
Save modified buffer? (Answering "No" will DISCARD changes.)
Y Yes
N No             ^C Cancel
GNU nano 2.9.3                               New Buffer                               Modified
Wow, nano is so easy to use! Why didn't anyone think of this before?
File Name to Write: nanofile.txt
^G Get Help      M-D DOS Format   M-A Append      M-B Backup File
^C Cancel        M-M Mac Format   M-P Prepend     ^T To Files
File Edit View Search Terminal Help
reader@ubuntu:~$ ls -l
total 4
-rw-rw-r-- 1 reader reader 69 Jul 14 13:18 nanofile.txt
reader@ubuntu:~$
```

Chapter 4: The Linux Filesystem



Chapter 9: Error Checking and Handling



Chapter 13: Functions

```
reader@ubuntu:~/scripts/chapter_13$ bash colorful.sh
Hello world!
Hello world!
Hello world!
Hello world!
```