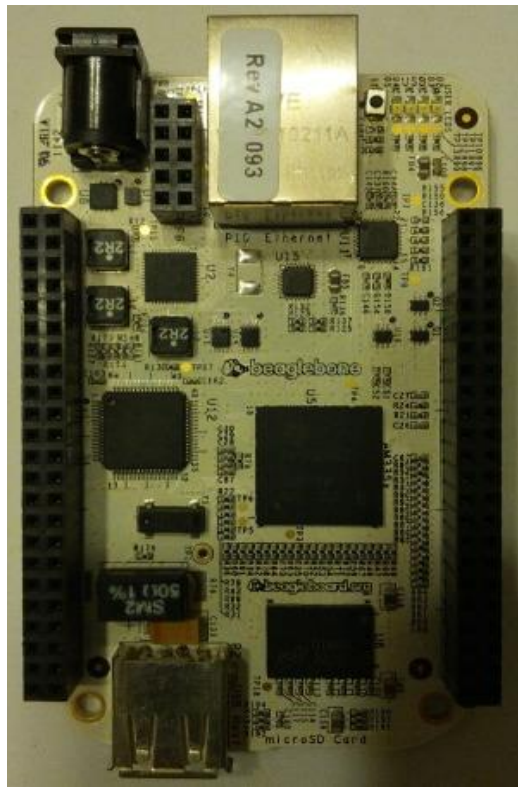


# 1

## Introducing the Beagle Boards



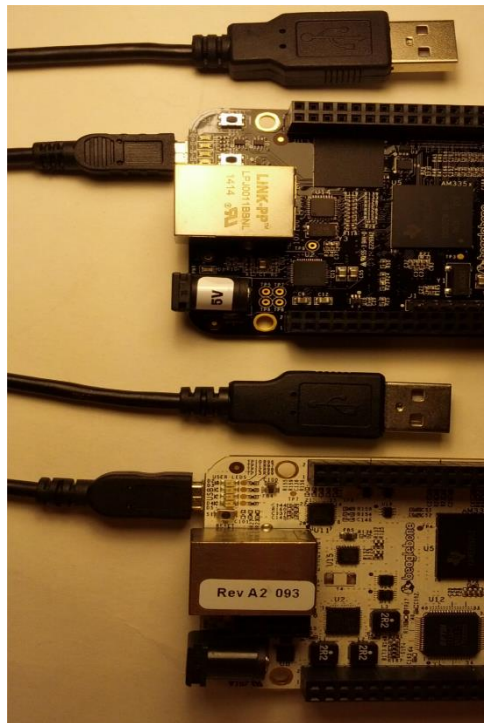














BeagleBoard.org - bone101 - Mozilla Firefox

File Edit View History Bookmarks Tools Help

BeagleBoard.org - bone101


192.168.7.2/Support/bone101/

Most Visited Linux Mint Community Forums Blog News Search DuckDuck... BBC News - Home Dilbert.com - The ... San Francisco, Ca...

 beagleboard.org 

### BeagleBone 101

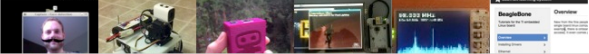
- BeagleBone 101**
- Software
  - Update image
  - Cloud9 IDE
- Hardware
  - Headers
  - Capes
- BoneScript**
- Functions
  - getPlatform()
  - pinMode()
  - getPinMode()

 **Your board is connected!**  
BeagleBone Black (rev 000B) SIN 1614BBBK0327 at 192.168.7.2

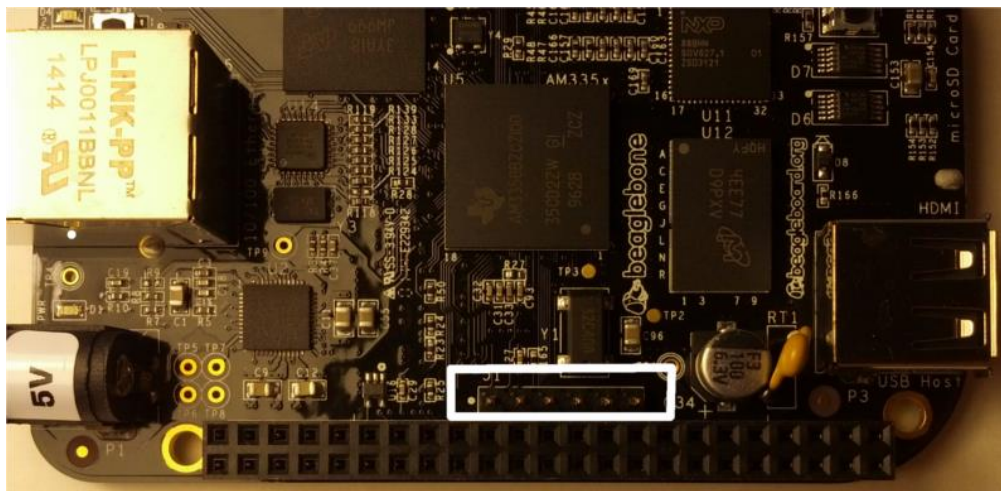
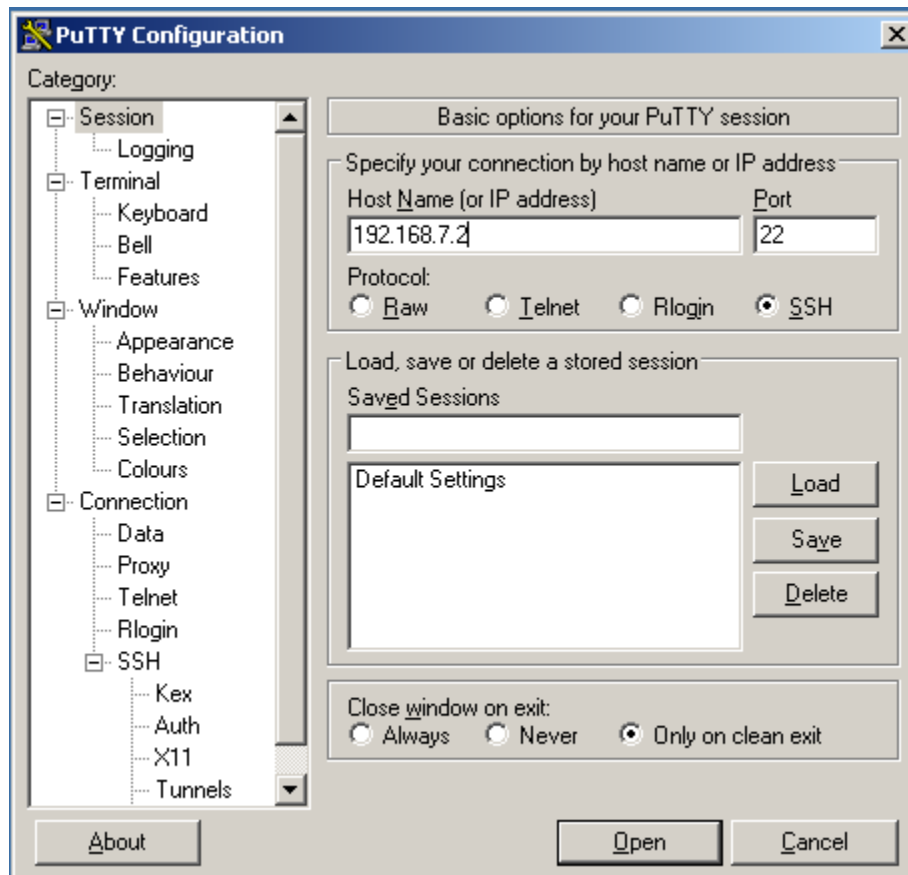
## BeagleBone: open-hardware expandable computer

Artist-tested, engineer approved

The left-hand navigation bar will help you explore your board and learn how to program it.

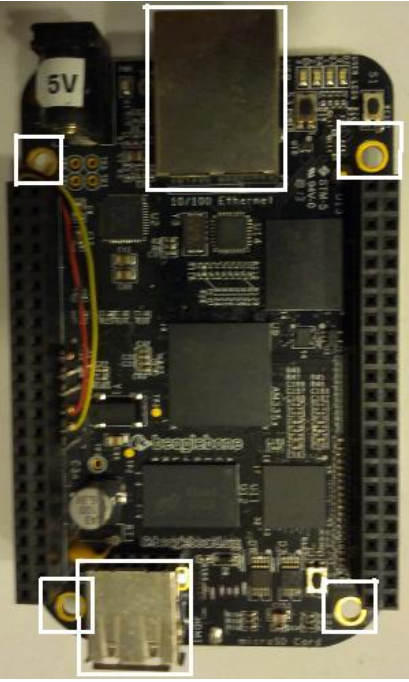






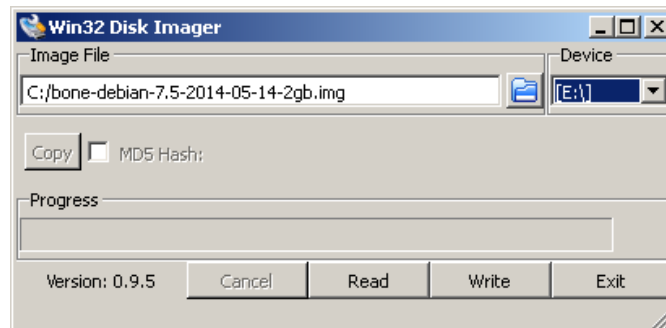
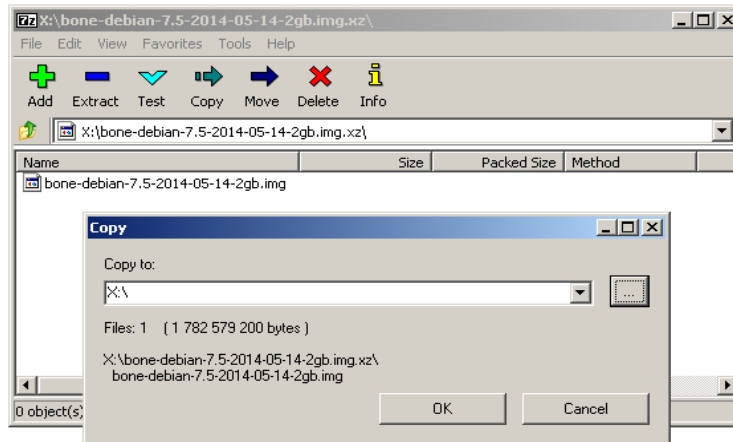


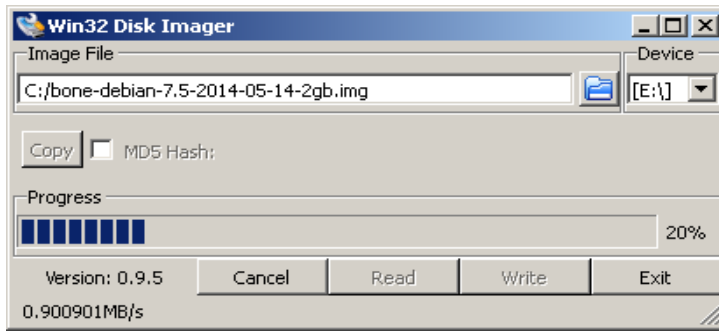




# 2

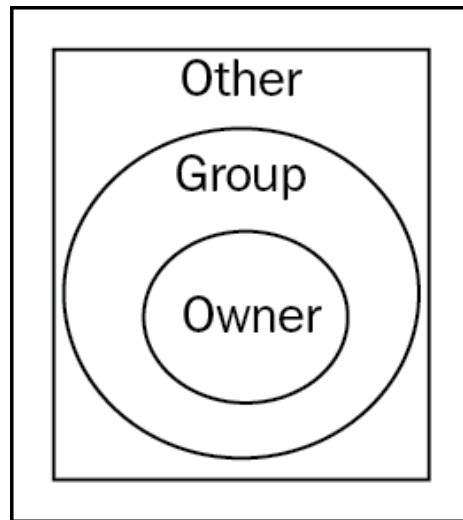
## Software in the BeagleBone

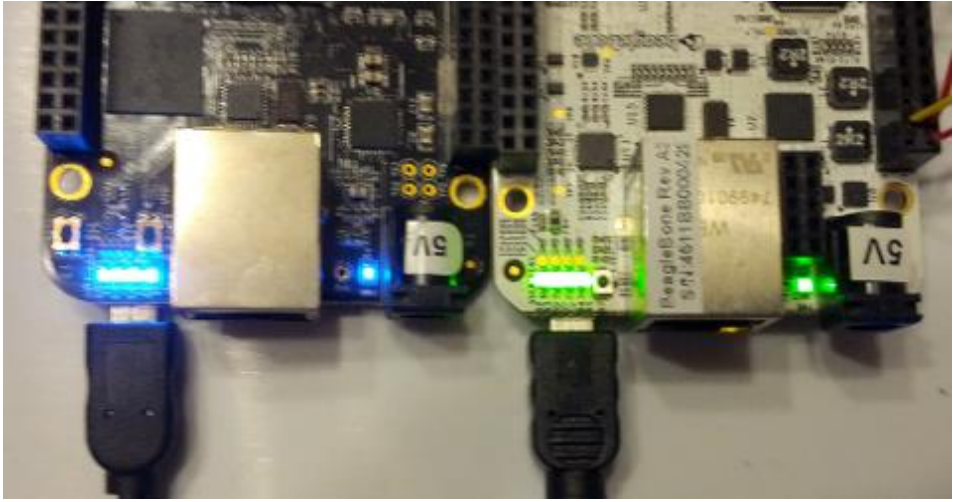




# 3

## Building an LED Flasher

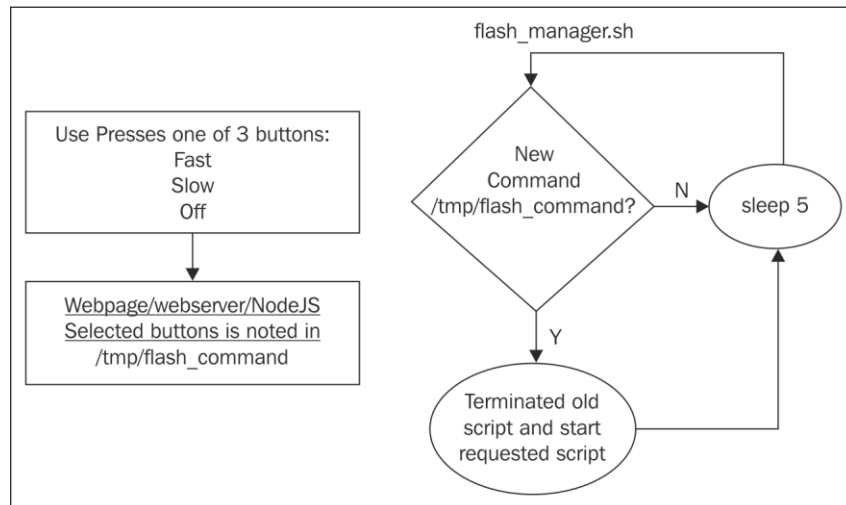


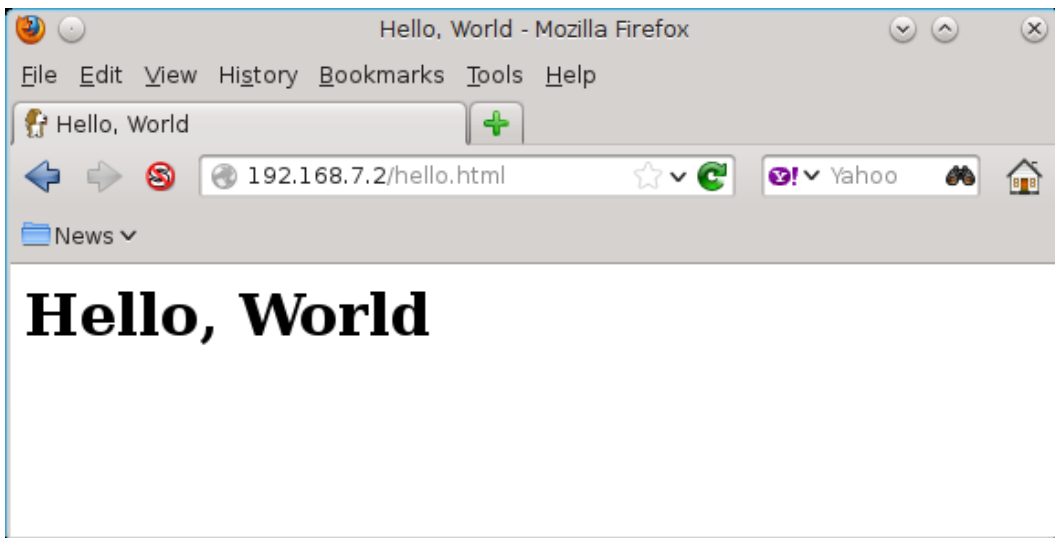
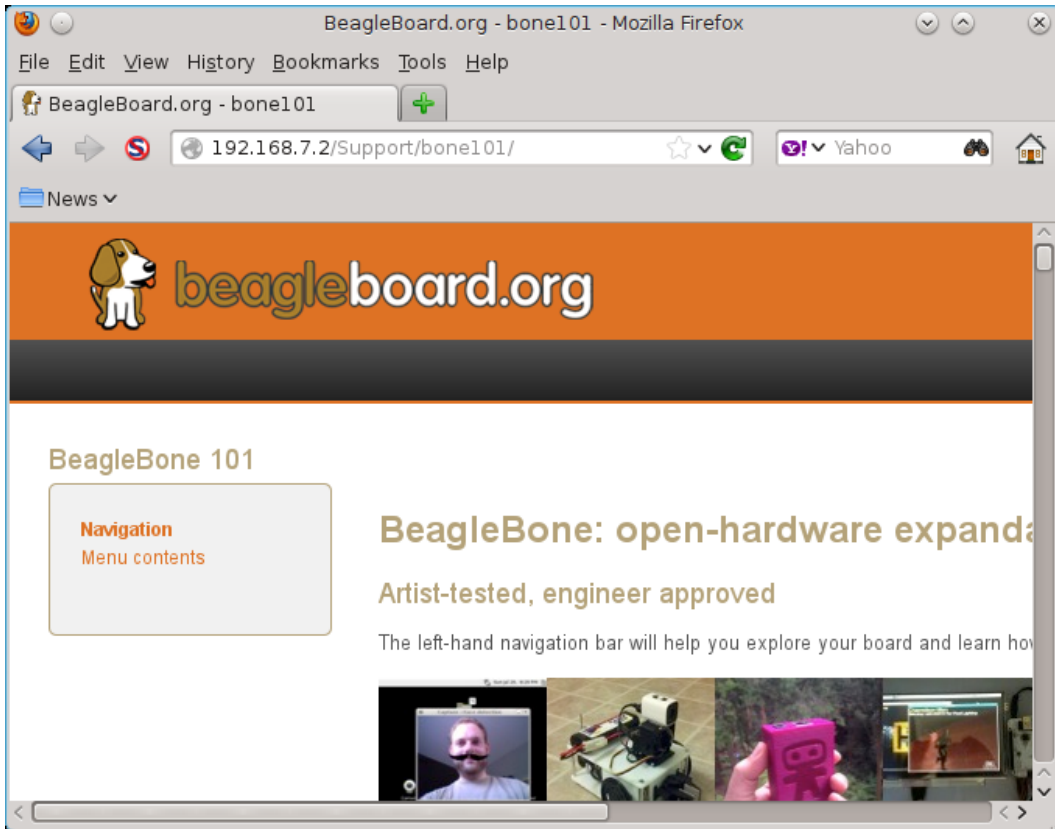


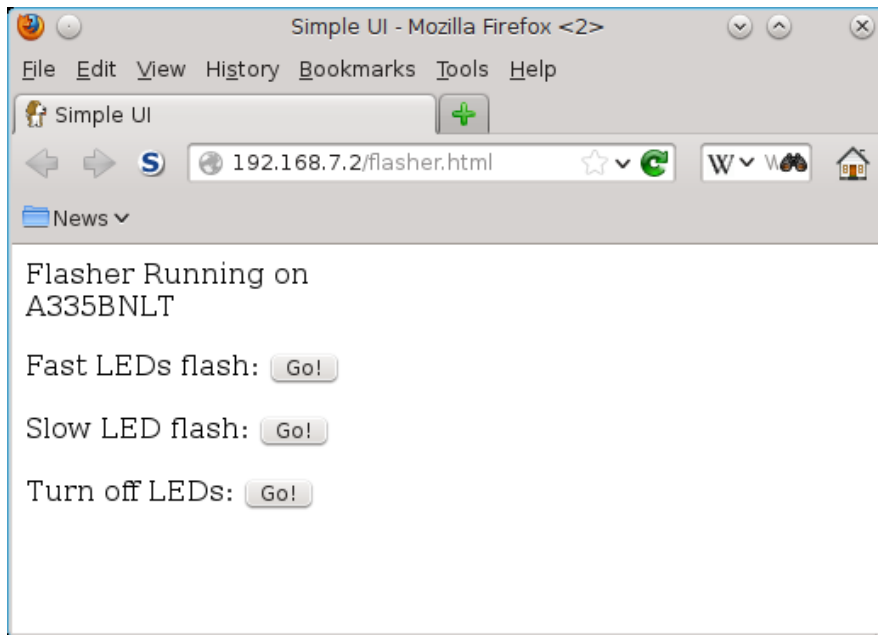


# 4

## Refining the LED Flasher

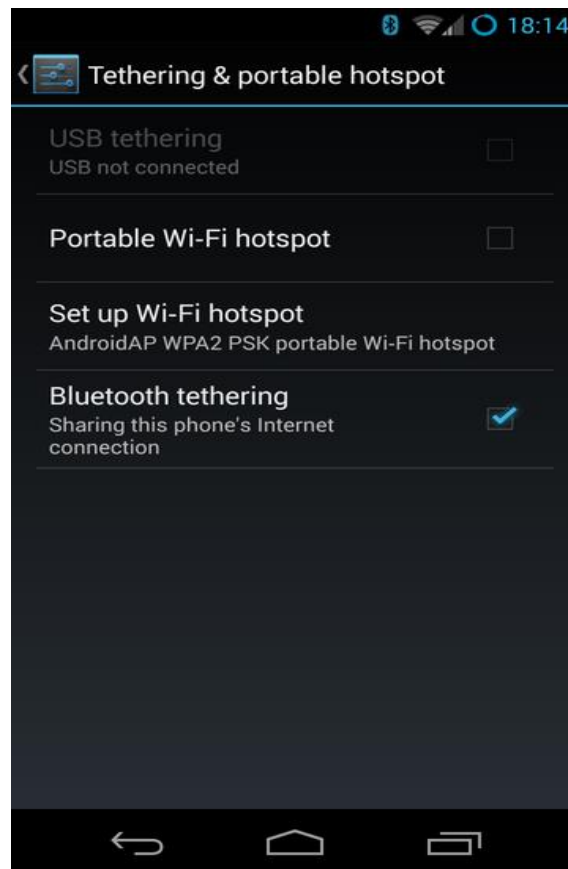






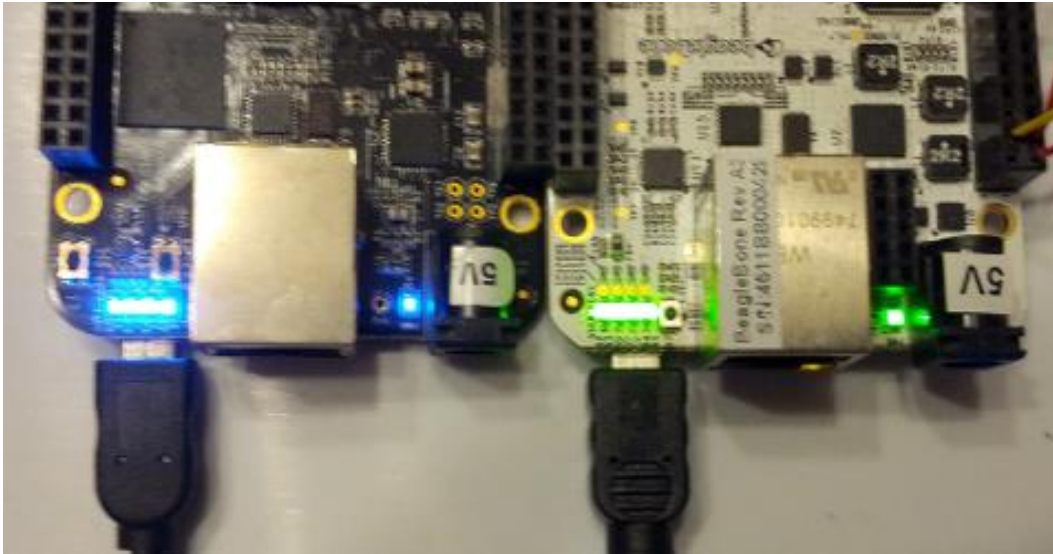
# 5

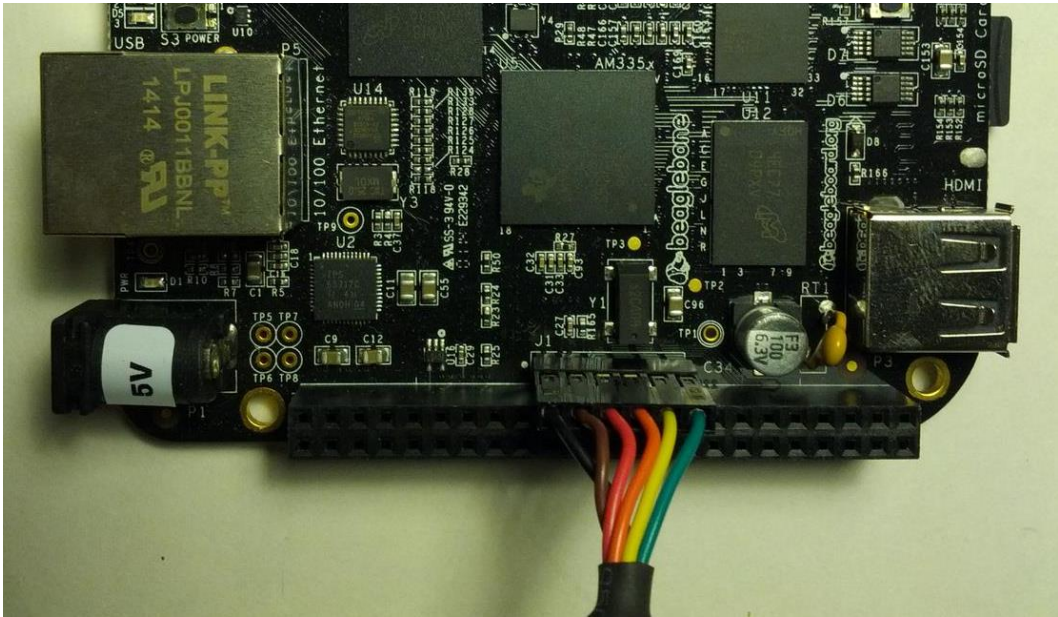
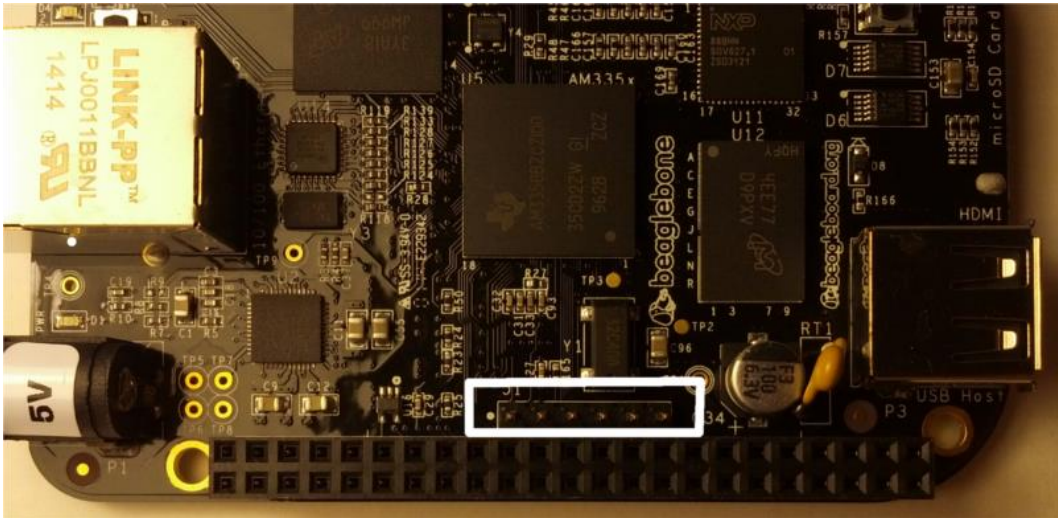
## Connecting the BeagleBone to Mobile Devices



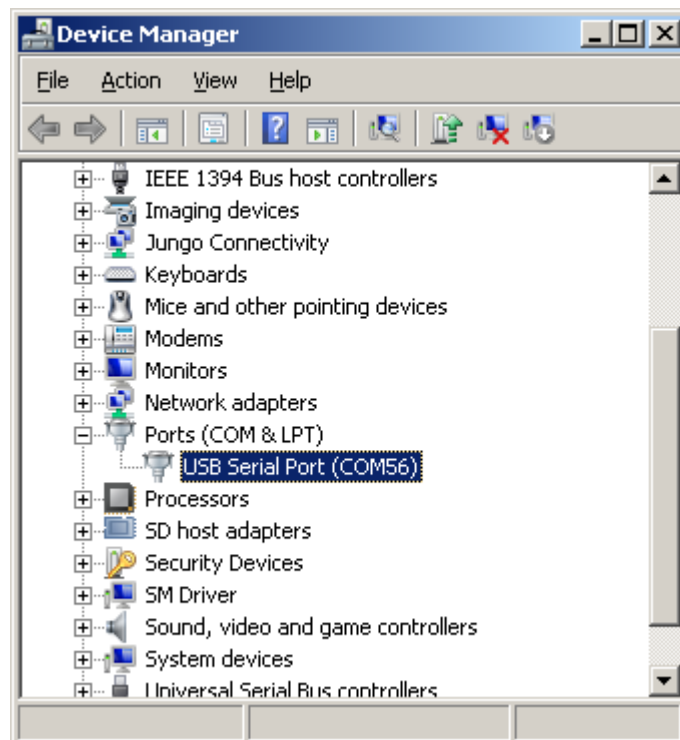
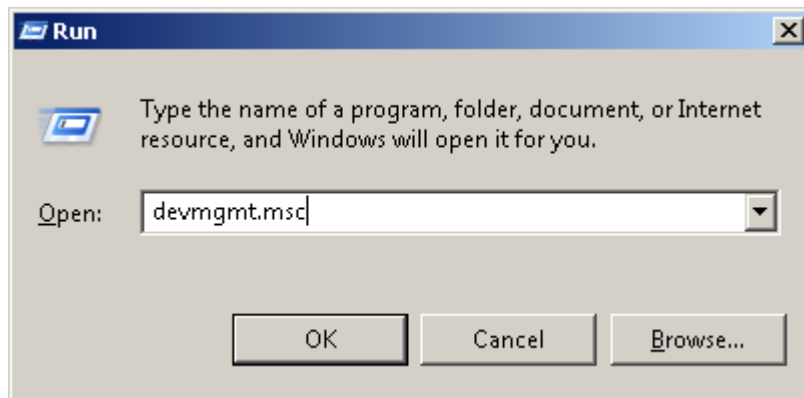
# 6

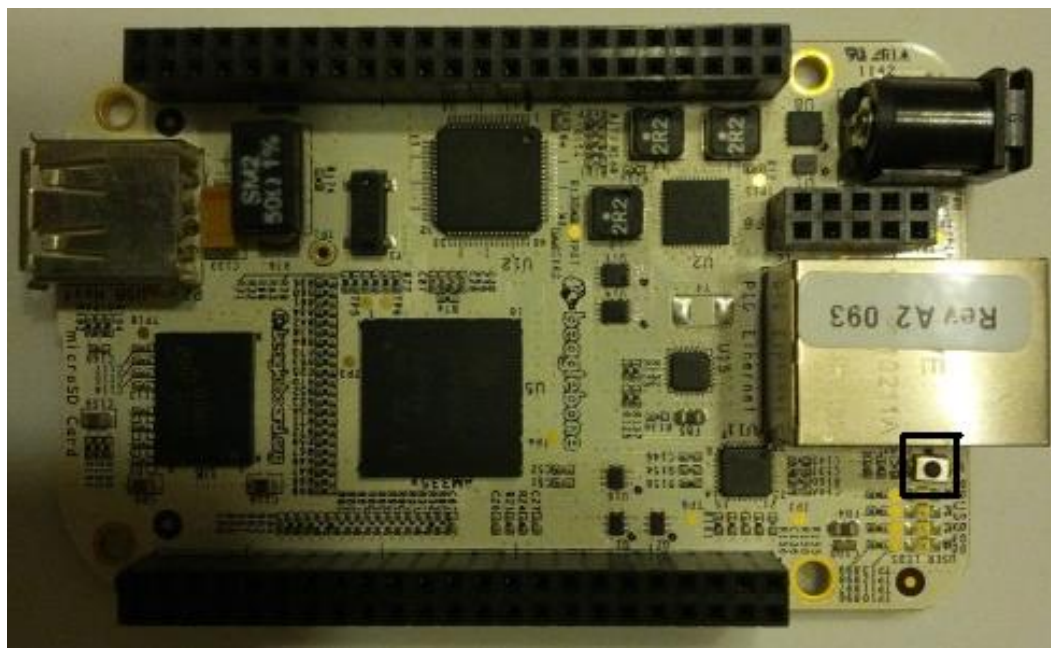
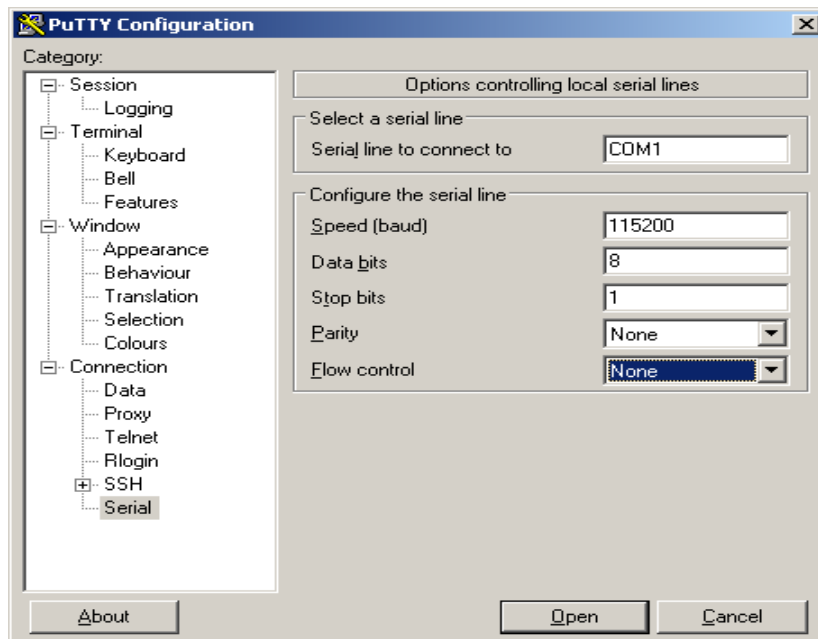
## Recovering from the Mistakes

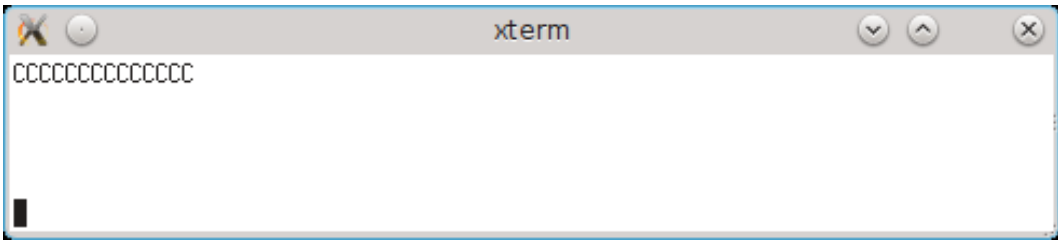






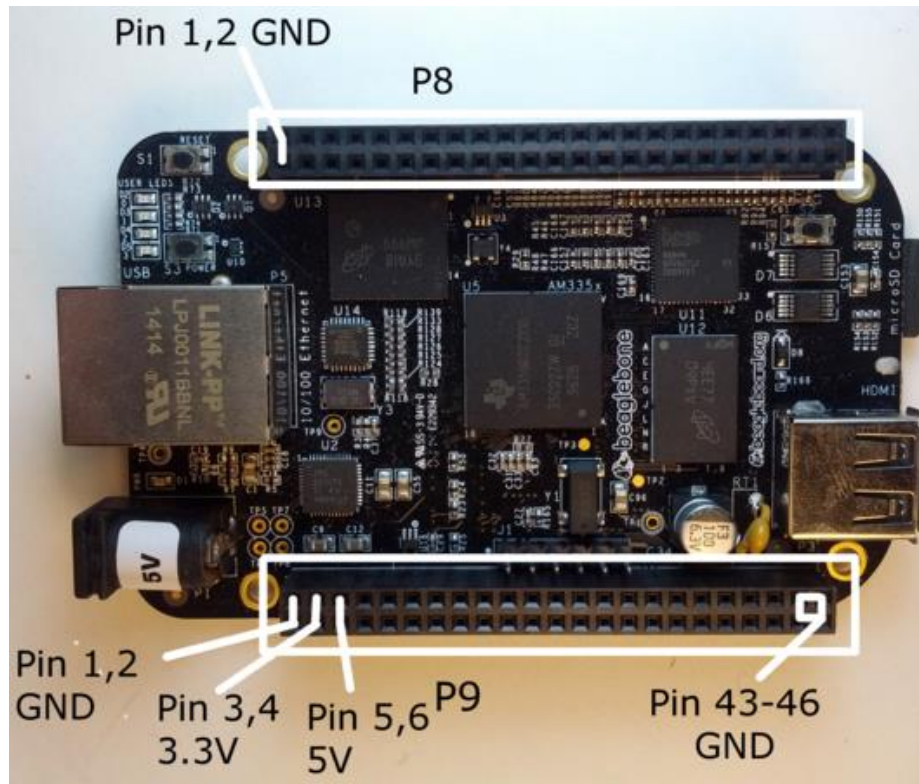


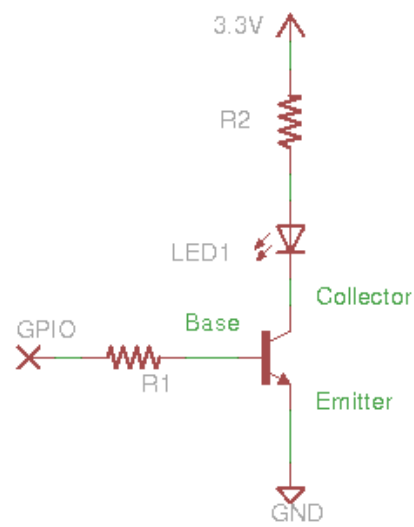
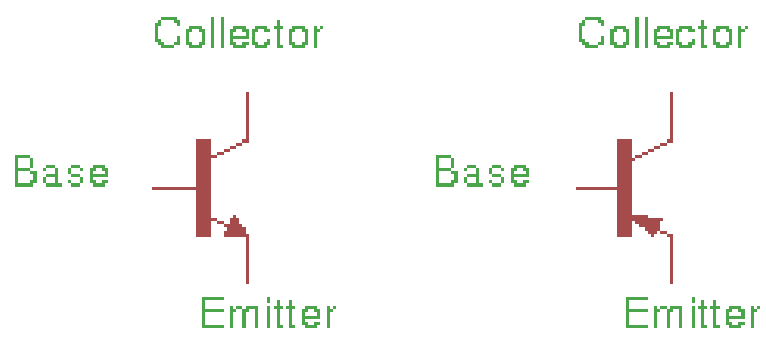


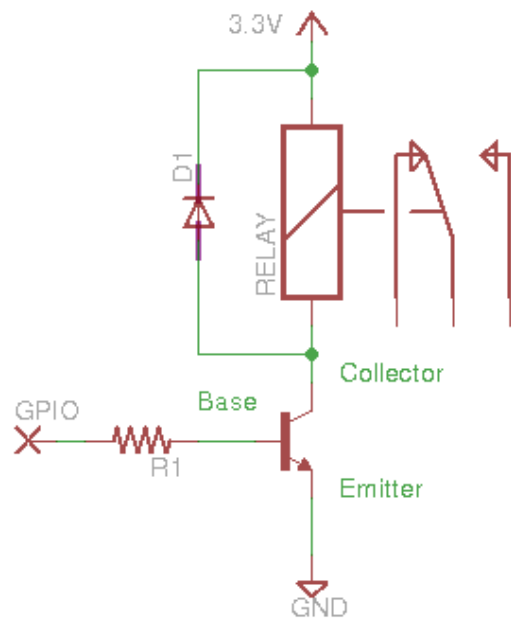


# 7

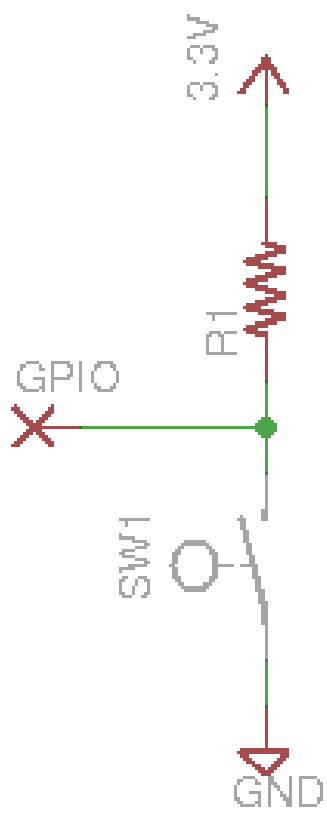
## Interfacing with the BeagleBone













# A

## The Boot Process

