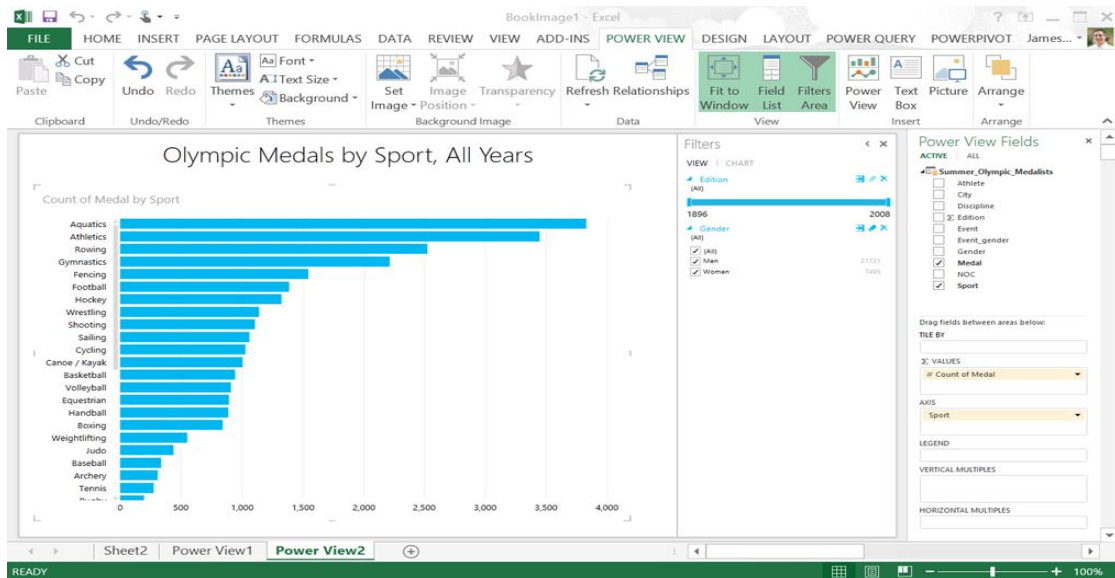
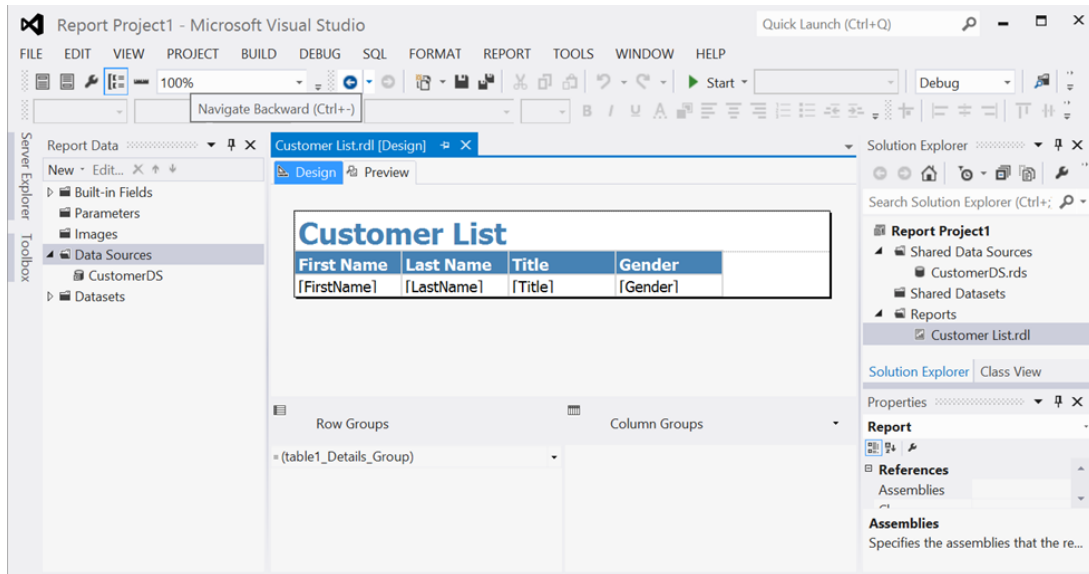


Reporting with Microsoft SQL Server 2012

Chapter 1: Getting Started with Reporting



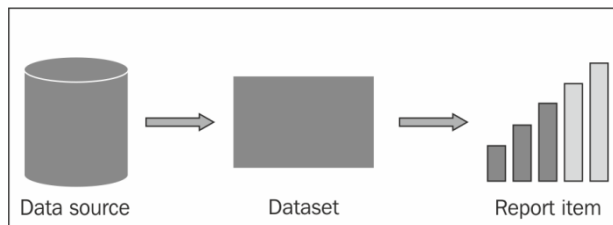
Home > CustomerList Home | My Subscriptions | Site Settings | Help

Marital Status: View Report

1 of 2 ? 100% Find | Next

First Name	Last Name	Title	Gender
David	Robinett	Mr.	M
Rebecca	Robinson	Ms.	F
Amy	Li	Ms.	F
Barbara	Nara	Mrs.	F
Madalena	Sanchez	Ms.	M
Thomas	Sanchez	Mr.	M
Ken	Sánchez	Mr.	F
Mary	Sandidge	Ms.	M
José	Saraiva	Sr.	M
Andrea	Ward	Ms.	F
Gary	Schare	Mr.	M
Barbara	Schultz	Ms.	M
Amber	King	Ms.	F
Ramón	Cai	Sr.	M
Scott	Seely	Mr.	F

Chapter 2, SSRS – Standard Reporting



- Microsoft SQL Server
- Microsoft SQL Server
- Microsoft SQL Azure
- Microsoft SQL Server Parallel Data Warehouse
- OLE DB
- Microsoft SQL Server Analysis Services
- Oracle
- ODBC
- XML
- Report Server Model
- Microsoft SharePoint List
- SAP NetWeaver BI
- Hyperion Essbase
- TERADATA

```

<DataSources>
  <DataSource Name="DataSource1">
    <<ConnectionProperties>
      <DataProvider>SQL</DataProvider>
      <ConnectionString>Data Source=.;Initial Catalog=AdventureWorksDW2012</ConnectionString>
      <IntegratedSecurity>true</IntegratedSecurity>
    </ConnectionProperties>
    <rd:SecurityType>Integrated</rd:SecurityType>
    <rd:DataSourceID>417eac9d-d1cc-4c10-b5f1-5b0a5ff5a6cb</rd:DataSourceID>
  </DataSource>
  <DataSource Name="DataSource2">
    <<DataSourceReference>SharedDataSource1</DataSourceReference>
    <rd:SecurityType>None</rd:SecurityType>
    <rd:DataSourceID>4f1a7e12-3c76-4b2e-9197-f661296aa299</rd:DataSourceID>
  </DataSource>
</DataSources>

```

Category	Calendar Year	Month of Year	Total Sales Amount	Total Product Cost	Total Profit
Accessories	CY 2007	July	\$14,468.20	\$5,411.13	\$9,057.07
Accessories	CY 2007	August	\$52,056.61	\$19,469.26	\$32,587.35
Accessories	CY 2007	September	\$52,149.72	\$19,504.08	\$32,645.64
Accessories	CY 2007	October	\$54,595.17	\$20,418.68	\$34,176.49
Accessories	CY 2007	November	\$54,832.02	\$20,507.27	\$34,324.75
Accessories	CY 2007	December	\$65,607.99	\$24,537.50	\$41,070.49
Accessories	CY 2008	January	\$56,456.93	\$21,114.99	\$35,341.94
Accessories	CY 2008	February	\$56,995.90	\$21,316.57	\$35,679.33
Accessories	CY 2008	March	\$60,097.80	\$22,476.68	\$37,621.12
Accessories	CY 2008	April	\$62,673.58	\$23,440.03	\$39,233.55
Accessories	CY 2008	May	\$71,880.47	\$26,883.41	\$44,997.06
Accessories	CY 2008	June	\$65,200.93	\$24,385.26	\$40,815.67
Accessories	CY 2008	July	\$33,744.64	\$12,620.55	\$21,124.09

Query Designer

FactInternetSales

- * (All Columns)
- ProductKey
- OrderDateKey
- DueDateKey
- ShipDateKey

DimDate

- * (All Columns)
- DateKey
- FullDateAlternateKey
- DayNumberOfWeek
- EnglishDayNameOfWe

Column	Alias	Table	Output	Sort Type	Sort Order	Group By	Filter
CalendarYear		DimDate	<input checked="" type="checkbox"/>	Ascendi...	1	Group By	
SalesAmount	SalesAmount	FactInternetSales	<input checked="" type="checkbox"/>			Sum	

```

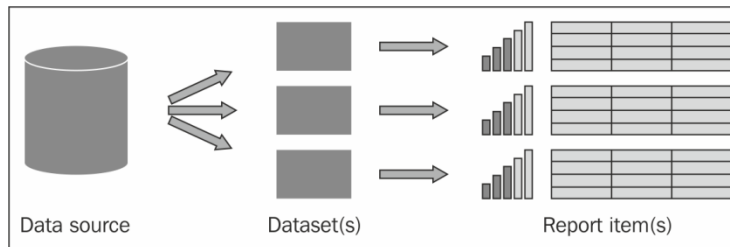
SELECT DimDate.CalendarYear, SUM(FactInternetSales.SalesAmount) AS SalesAmount
FROM FactInternetSales INNER JOIN DimDate ON FactInternetSales.OrderDateKey = DimDate.DateKey
GROUP BY DimDate.CalendarYear
ORDER BY DimDate.CalendarYear

```

CalendarYear	SalesAmount
2005	3266373.6566
2006	6530343.5264
2007	9791060.2977
2008	9770899.7400

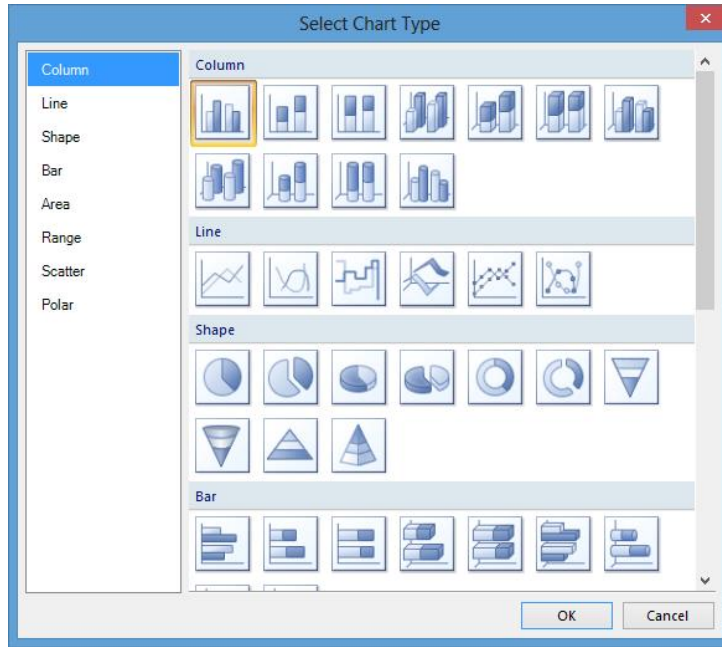
1 of 4 | Cell is Read Only.

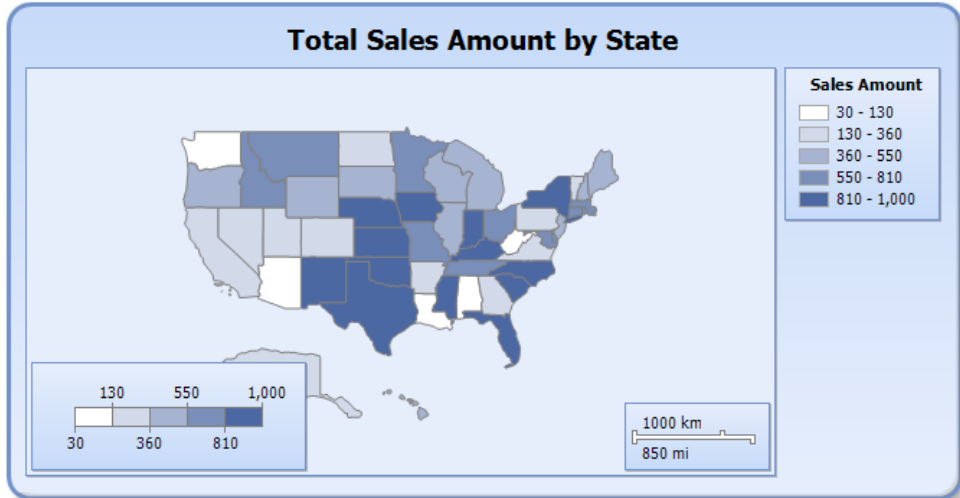
Help OK Cancel



Calendar Year	Month	Sales Amount
CY 2005	July	\$473,388
	August	\$506,192
	September	\$473,943
	October	\$513,329
	November	\$543,993
	December	\$755,528
CY 2006	January	\$596,747
	February	\$550,817
	March	\$644,135
	April	\$663,692

Calendar Year	January	February	March	April	May
CY 2005					
CY 2006	\$596,747	\$550,817	\$644,135	\$663,692	\$
CY 2007	\$438,865	\$489,090	\$485,575	\$506,399	\$
CY 2008	\$1,340,245	\$1,462,480	\$1,480,905	\$1,608,751	\$1,





Country	YTD Total	YTD Trend
Australia	\$3,033,784	
United States	\$2,838,512	
United Kingdom	\$1,298,249	
Germany	\$1,058,406	
France	\$1,026,325	
Canada	\$535,784	

Select Indicator Type

Directional

Symbols

Shapes

Ratings

Directional

Symbols

Shapes

Ratings

Report Parameter Properties

Change name, data type, and other options.

1 Name: pCategory

2 Prompt: Product Category

3 Data type: Text

4 Allow blank value ("")

5 Allow null value

6 Allow multiple values

7 Select parameter visibility:

- Visible
- Hidden
- Internal

Help OK Cancel

Expression

Set expression for: BackgroundColor

```
=IIF(
  Fields!Internet_Sales_Amount.Value > 10000,
  "Lime",
  "Transparent"
)
```

100 %

Category: Constants, Built-in Fields, Parameters, Fields (ds_SalesByProductCat), Datasets, Variables, Operators, Common Functions

Item: <All>

Values: No Color, color palette, More colors...

Help OK Cancel

Country	Sales Amount
Australia	\$1,594
Canada	\$14,378
France	\$4,608
Germany	\$1,984
United Kingdom	\$4,279
United States	\$53,608

Text Box Properties

General
Number
Alignment
Font
Border
Fill
Visibility
Interactive Sorting
Action

Change action options.

Enable as an action:

None
 Go to report
 Go to bookmark
 Go to URL

Help OK Cancel

Report Properties

Page Setup
Code
References
Variables

Write custom code for this report.

Custom code:

```
Public Function CurrencyAsText (val As Decimal) As String
    Return CStr(Format(val, "C"))
End Function
```

Help OK Cancel

Schedule details

Choose whether to run the report on an hourly, daily, weekly, monthly, or one time basis.

All times are expressed in (GMT -05:00) Eastern Standard Time.

- Hour
- Day
- Week
- Month
- Once

Daily Schedule

On the following days:
 Sun Mon Tue Wed Thu Fri Sat

Every weekday

Repeat after this number of days:

Start time: : A.M. P.M.

Start and end dates

Specify the date to start and optionally end this schedule.

Begin running this schedule on: 

Stop this schedule on: 

Report Delivery Options

Specify options for report delivery.

Delivered by:

File Name:

Add a file extension when the file is created

Path:

Render Format:

Credentials used to access the file share:
User Name:
Password:

Overwrite options:
 Overwrite an existing file with a newer version
 Do not overwrite the file if a previous version exists
 Increment file names as newer versions are added

Subscription Processing Options

Specify options for subscription processing.

Run the subscription:

When the scheduled report run is complete.
At 8:00 AM every Mon of every week, starting 11/26/2013

On a shared schedule:
At 6:00 AM every Sun, Mon, Tue, Wed, Thu, Fri, Sat of every week, starting 11/20/2013

- XML file with report data
- CSV (comma delimited)
- Data Feed
- PDF
- HTML 4.0
- MHTML (web archive)
- Excel 2003
- Excel
- RPL Renderer
- TIFF file
- Word 2003
- Word

- Properties
- Parameters
- Data Sources
- Subscriptions
- Processing Options**
- Cache Refresh Options
- Report History
- Snapshot Options
- Security

Always run this report with the most recent data

Do not cache temporary copies of this report

Cache a temporary copy of the report. Expire copy of report after a number of minutes:

Cache a temporary copy of the report. Expire copy of report on the following schedule:

Report-specific schedule

At 8:00 AM every Mon of every week, starting 11/22/2013

Shared schedule

Render this report from a report snapshot

Use the following schedule to create report snapshots:

Report-specific schedule

At 8:00 AM every Mon of every week, starting 11/22/2013

Shared schedule

Create a report snapshot when you click the Apply button on this page

Report Timeout

Use the system default setting

Do not timeout report

Limit report processing to the following number of seconds:

	Default Parameter Values	Non-Default Parameter Values
Used In Query	Snapshot	No
Not Used In Query	Snapshot	Snapshot



Cache Refresh Plan: SampleReport1

Description

Refresh the cache according to the following schedule:

Item-specific schedule

At 8:00 AM every Mon of every week, starting 11/22/2013

Shared schedule

At 6:00 AM every Sun, Mon, Tue, Wed, Thu, Fri, Sat of every week, starting 11/20/2013

Specify parameter values to use for this cache entry:

Start Date

New Data Alert - Sales Amount By Sales Territory



Report name:
Sales Amount By Sales Territory

Report data name:
tbl_TotalSales_ByGroupCountryRegion

Group	Country	Region	SalesAmount	Percen
Europe	France	France	2644017.7143	0.0900
Europe	Germany	Germany	2894312.3382	0.0985
Europe	United Kingdom	United Kingdom	3391712.2109	0.1155
North America	Canada	Canada	1977844.8621	0.0673
North America	United States	Central	3000.8296	0.0001
North America	United States	Northeast	6532.4682	0.0002
North America	United States	Northwest	3649866.5512	0.1243
North America	United States	Southeast	12238.8496	0.0004
North America	United States	Southwest	5718150.8122	0.1947
Pacific	Australia	Australia	9061000.5844	0.3086

Alert will be saved to:
<http://sp2013>

Alert name:
European Sales Region Under \$1,000,000

Group is Europe

and SalesAmount is less than 1000000

(Add rule...)

Schedule settings

Recurrence pattern:
Daily - every 1 day(s)

Advanced

Email settings

Recipient(s):
EuropeSalesManagers@AdventureWorks.com

Subject:
Data Alert: European Sales Region Under \$1,000,000

Description:
Report: Sales Amount By Sales Territory
Data Alert: European Sales Region Under \$1,000,000

Data Alert Manager

View alerts for user: Bill Anton View alerts for report: Sales Amount By Sales Territory.rdl

Alert Name	Report Name	Created By	Sent Alerts	Last Run	Last Modified	Status
European Sales Region Under \$1,000,000	Sales Amount By Sales Territory	Bill Anton	0		11/24/2013 6:52:44 AM	Alert created.

Server Properties - ANTON-PC (ANTON-PC\anton)

Select a page: General, Execution, History, Logging, Security, Advanced

Script Help

Name: SQL Server Reporting Services

Version: Microsoft SQL Server Reporting Services Version 11.0.3128.0

Edition: Enterprise

Authentication Mode: Windows Authentication

URL: http://ANTON-PC:80/ReportServer

Enable a My Reports folder for each user.

Select the role to apply to each My Reports folder:
My Reports

Enable download for the ActiveX client print control

Connection: Server: ANTON-PC, Connection: ANTON-PC\anton

Progress: Ready

OK Cancel

SQL Server Reporting Services Home

New Folder | New Data Source | Report Builder | Folder Settings | Upload File

Data Sources | **My Reports** (Use this folder to store personalized repo...) | Reports

Home > Reports > SampleReport1

Start Date: 11/29/2013

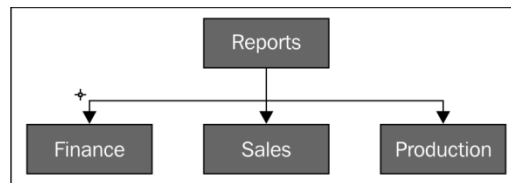
1 of 1 | 100% | Find | Next

SampleReport1

Calendar Year: Total Internet Sales

12/3/2013 1:01:34 PM

- XML file with report data
- CSV (comma delimited)
- PDF
- MHTML (web archive)
- Excel
- TIFF file
- Word



Chapter 3, Development Activity with SSRS

New Project

.NET Framework 4 | Sort by: Default | Search Installed Temp

Recent Templates

Installed Templates

- Business Intelligence
 - Analysis Services
 - Integration Services
 - Reporting Services
- Visual Basic
- Visual C#
- Visual C++
- Visual F#
- SQL Server
- Other Project Types
- Database
- Test Projects

Online Templates

Report Server Project Business Intelligence

Report Server Project Business Intelligence

Type: Business Intelligence
Create an empty Report Server project.

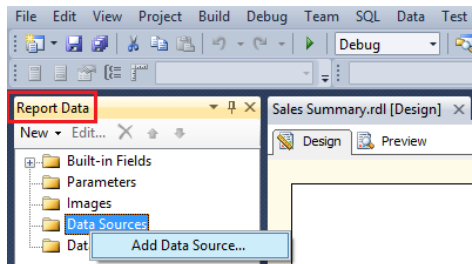
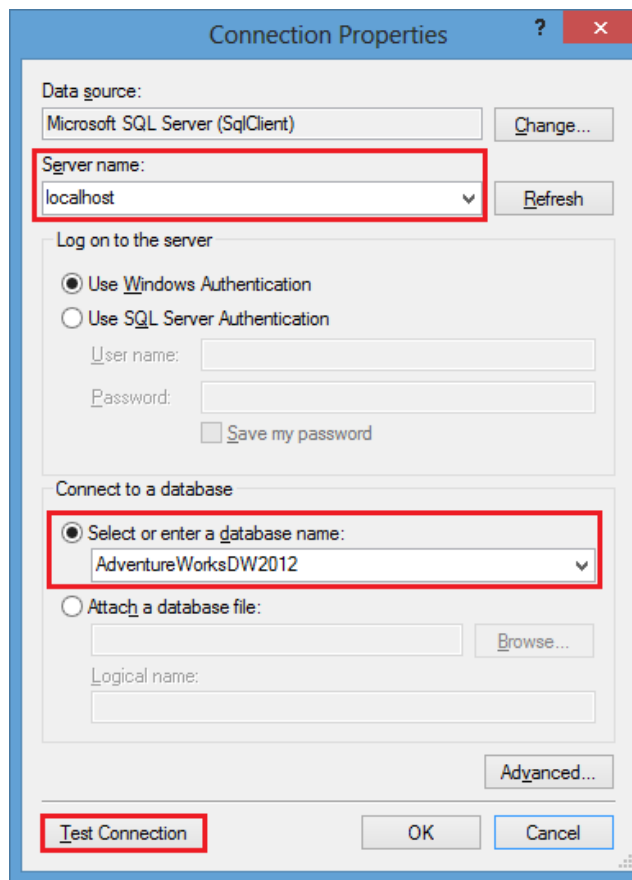
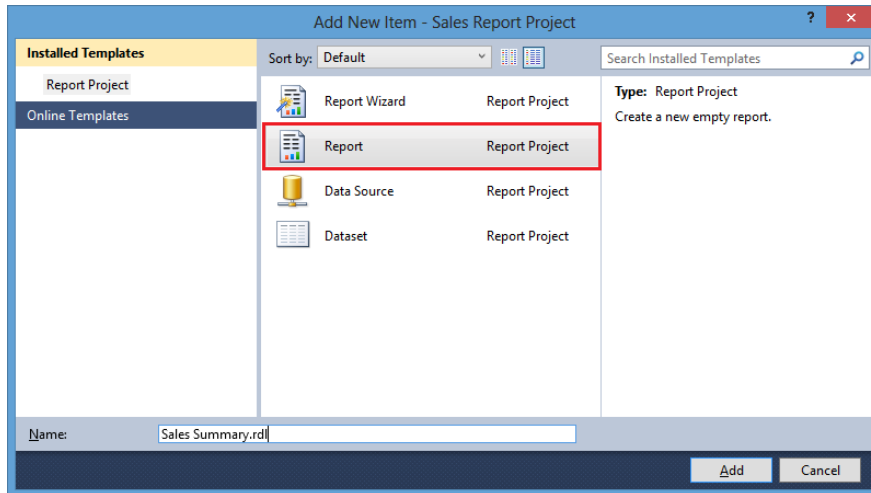
Name: Sales Report Project

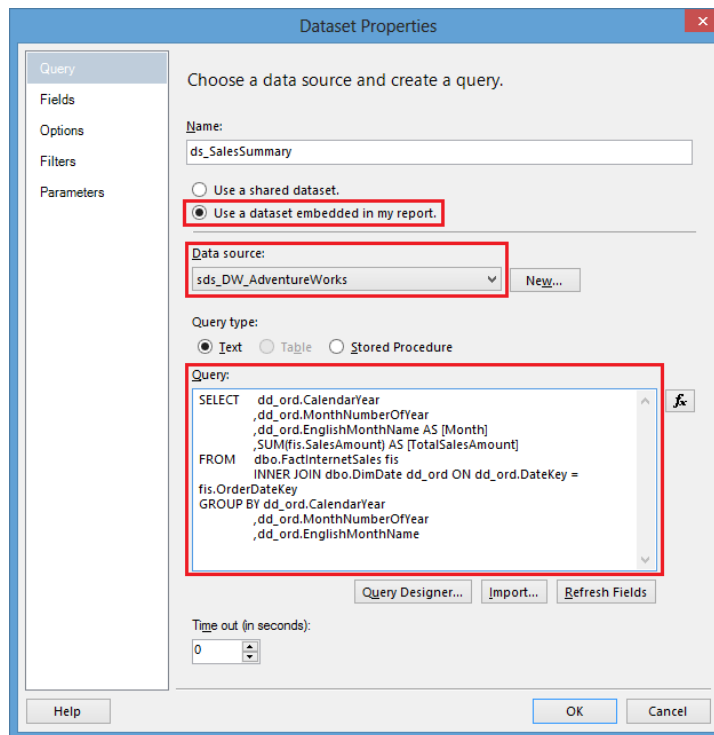
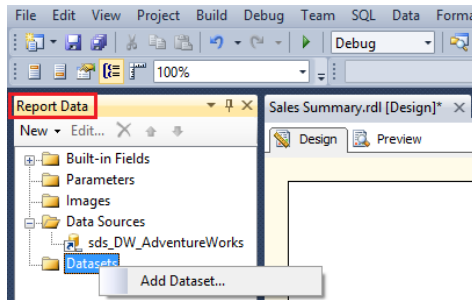
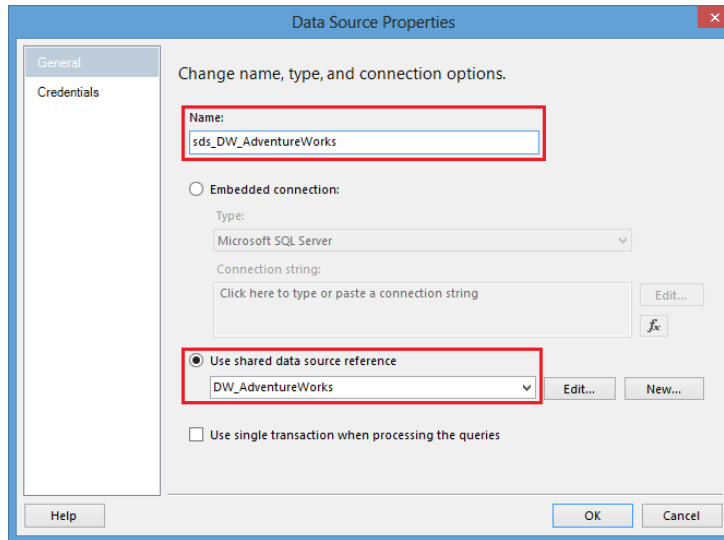
Location: C:\SSRS Demo\ | Browse...

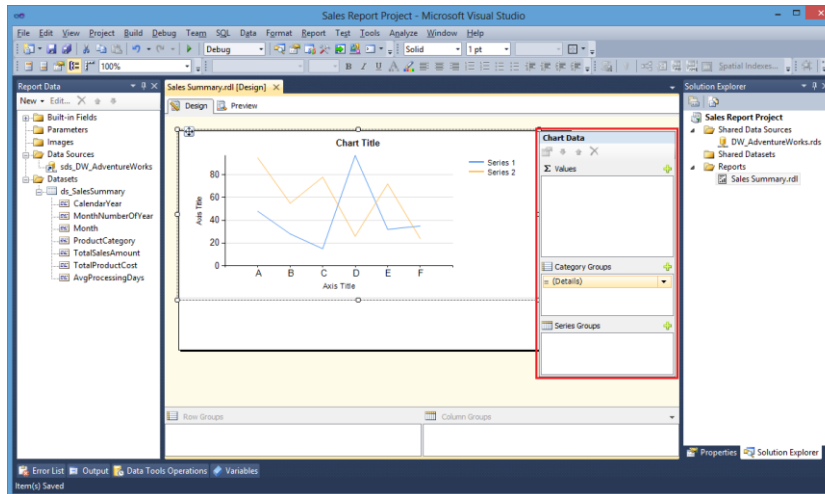
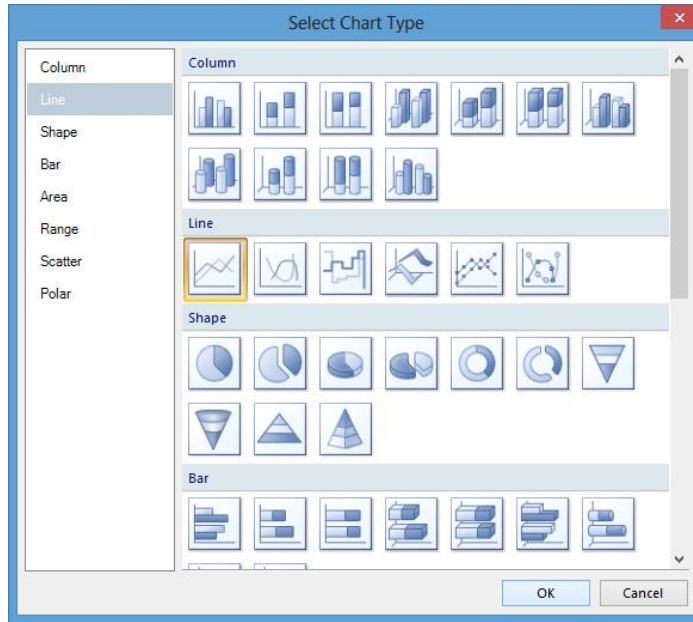
Solution name: Sales Report Project

Create directory for solution
 Add to source control

OK | Cancel







Category Group Properties

Change category group settings.

General
Filters
Sorting
Variables

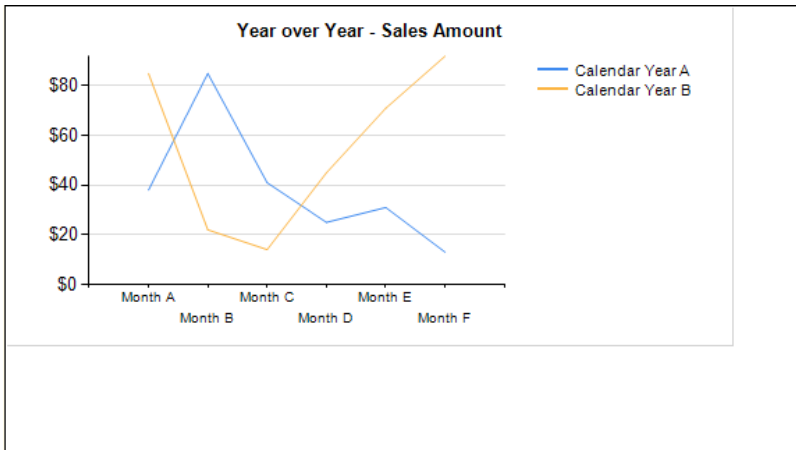
Name: Chart1_CategoryGroup

Label: [Month]

Synchronize groups in:

Group expressions:

Group on: [Month]



Vertical Axis Properties

Axis Options

Labels

Label Font

Number

Major Tick Marks

Minor Tick Marks

Line

Set number formatting options.

Category: **Currency**

Sample: \$12,345

Decimal places: 0

Use 1000 separator (,)

Show values in: Thousands

Show zero as: -

Negative numbers:

- (\$12,345)**
- 12,345
- \$-12,345
- \$12,345-

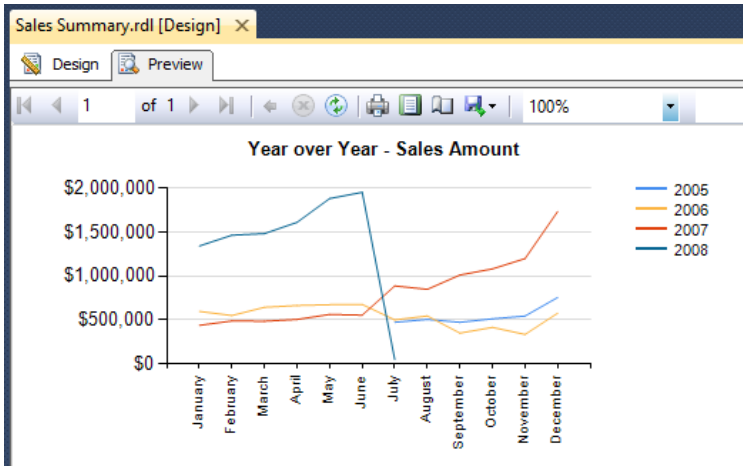
Symbol: \$ English (United States)

Show symbol after value

Include a space

Current regional settings: English (United States)

Help
OK
Cancel



Sales Report Project Property Pages

Configuration: Active(Debug)
Platform: N/A
Configuration Manager...

Configuration Properties

General

Build

ErrorLevel: 2

OutputPath: bin\Debug

Debug

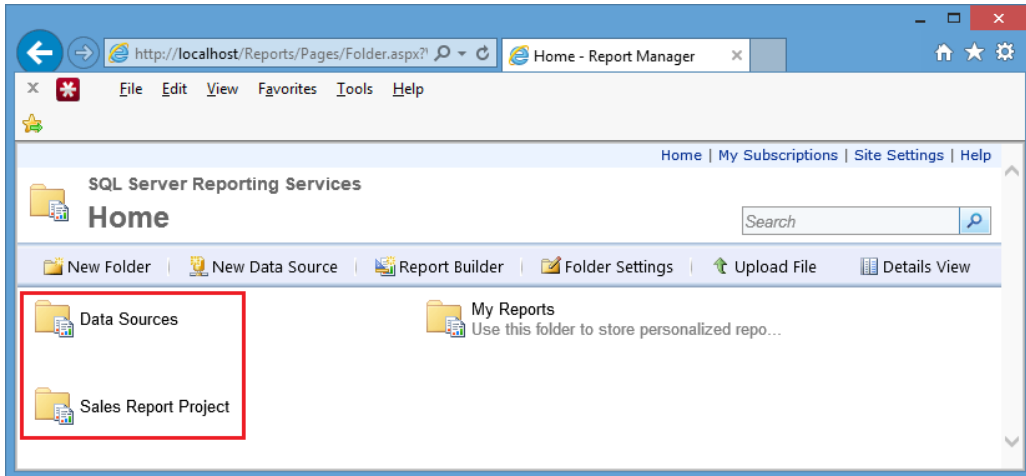
StartItem

Deployment

Overwrite Datasets	False
Overwrite Data Sources	False
Target Dataset Folder	Datasets
Target DataSource Folder	Data Sources
Target Report Folder	Sales Report Project
Target Report Part Folder	Report Parts
Target Server URL	
Target Server Version	SQL Server 2008 R2 or later

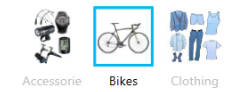
ErrorLevel
Specifies the severity level of the build issues that are reported as errors. Issues with severity levels less than or equal to the value of ErrorLevel are reported as e...

OK
Cancel
Apply



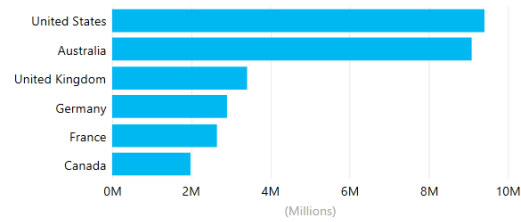
Chapter 4, Power View – Self-service Reporting

Sales Dashboard

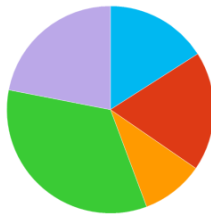


FiscalYear	SalesAmount
2006	\$7,072,084.24
2007	\$5,762,134.30
2008	\$15,483,926.11
Total	\$28,318,144.65

SalesAmount by EnglishCountryRegionName



SalesAmount by EnglishOccupation



EnglishOccupation

- Clerical
- Management
- Manual
- Professional
- Skilled Manual

EnglishEducation	SalesAmount
Bachelors	\$9,900,142.76
Partial College	\$7,723,542.88
Graduate Degree	\$5,460,560.25
High School	\$4,638,026.07
Partial High School	\$1,636,405.26
Total	\$29,358,677.22

Filters < x

VIEW

Color (All) [icon] [icon] [icon]

Search...

- (All) 133
- Black 28
- Blue 1
- Grey 18
- Multi 254
- NA 63
- Red 52
- Silver 7
- Silver/Black 4
- White 46
- Yellow

Gender (All) [icon] [icon] [icon]

- (All) 9133
- F 9351
- M

MaritalStatus (All) [icon] [icon] [icon]

- (All) 10011
- M 8473
- S

Promotion Dashboard

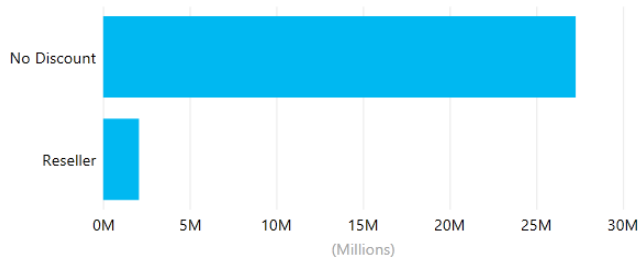
EnglishPromotionName	StartDate	EndDate	OrderQuantity	SalesAmount
No Discount	6/1/2005	12/31/2008	56038	\$27,256,766.5
Touring-1000 Promotion	7/1/2007	9/30/2007	13	\$30,992.9
Touring-3000 Promotion	7/1/2007	9/30/2007	20	\$14,847.0
Volume Discount 11 to 14	7/1/2005	6/30/2008	2118	\$2,005,230.2
Total			58189	\$29,307,836.6

FiscalYear
2005
2006
2007
2008
2009
2010
2011

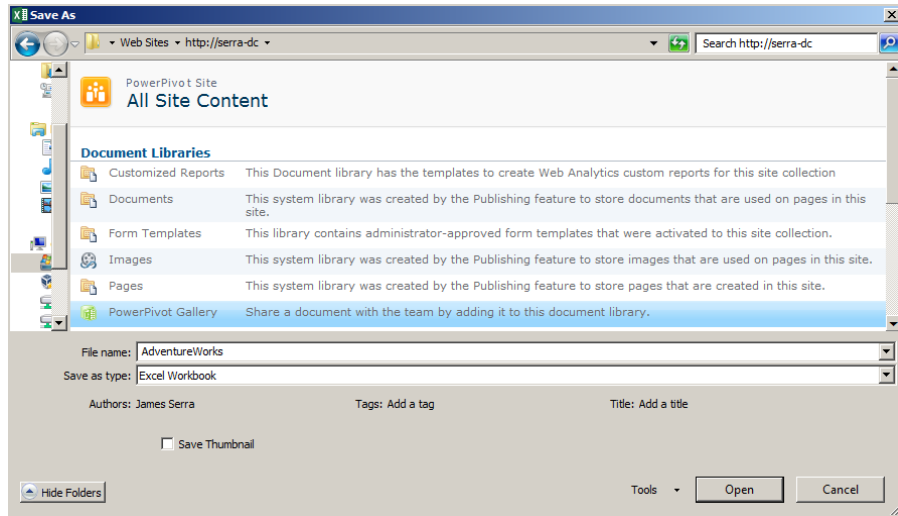
EnglishPromotionType	2006	2007	2008	Total
New Product			33	33
No Discount	2206	2859	50973	56038
Volume Discount		363	1755	2118
Total	2206	3222	52761	58189

Gender
F
M

SalesAmount by EnglishPromotionCategory



SalesTerritoryRegion
Australia
Canada
Central
France
Germany
NA
Northeast
Northwest
Southeast
Southwest
United Kingdom




SharePoint | SHAREPOINT2013\jserra

PowerPivot Gallery

NEW Document | Upload Document | New Folder | Edit Document | Check Out | Check In | Discard Check Out | View Properties | Edit Properties | Delete Document | Share | Download a Copy | Send To - Manage Copies | Go To Source | Workflows | Publish | Approve/Reject | Cancel Approval | Tags & Notes

Dashboards | Data Connections | Libraries | PerformancePoint Content | Recent | PowerPivot Gallery | Site Contents



Internet Sales

Last Modified By: SHAREPOINT2013\jserra, Date: 12/30/2013
Created By: SHAREPOINT2013\jserra

Create Power View Report

SharePoint | SHAREPOINT2013\jserra

BI Center

Data Source Properties

Warning: this page is not encrypted for secure communication. User names, passwords, and any other information will be sent in clear text. For more information, contact your administrator.

Use this page to edit a data source that can be shared by reports, models, or shared datasets.

Name * Adventure Works MD .rsds

Data Source Type Microsoft BI Semantic Model for Power View

Connection string
Enter a connection string for accessing the report data source.
Data source=SQLSERVER1\Initial Catalog=AdventureWorksDW2012Multidimensional-E;Cube='Internet Sales'

Credentials
Enter the credentials used by the report server to access the report data source.

Windows authentication (integrated) or SharePoint user
 Prompt for credentials
 Provide instructions or example:

 Use as Windows credentials

OK Cancel

Import Data

Select how you want to view this data in your workbook.

Table
 PivotTable Report
 PivotChart
 Power View Report
 Only Create Connection

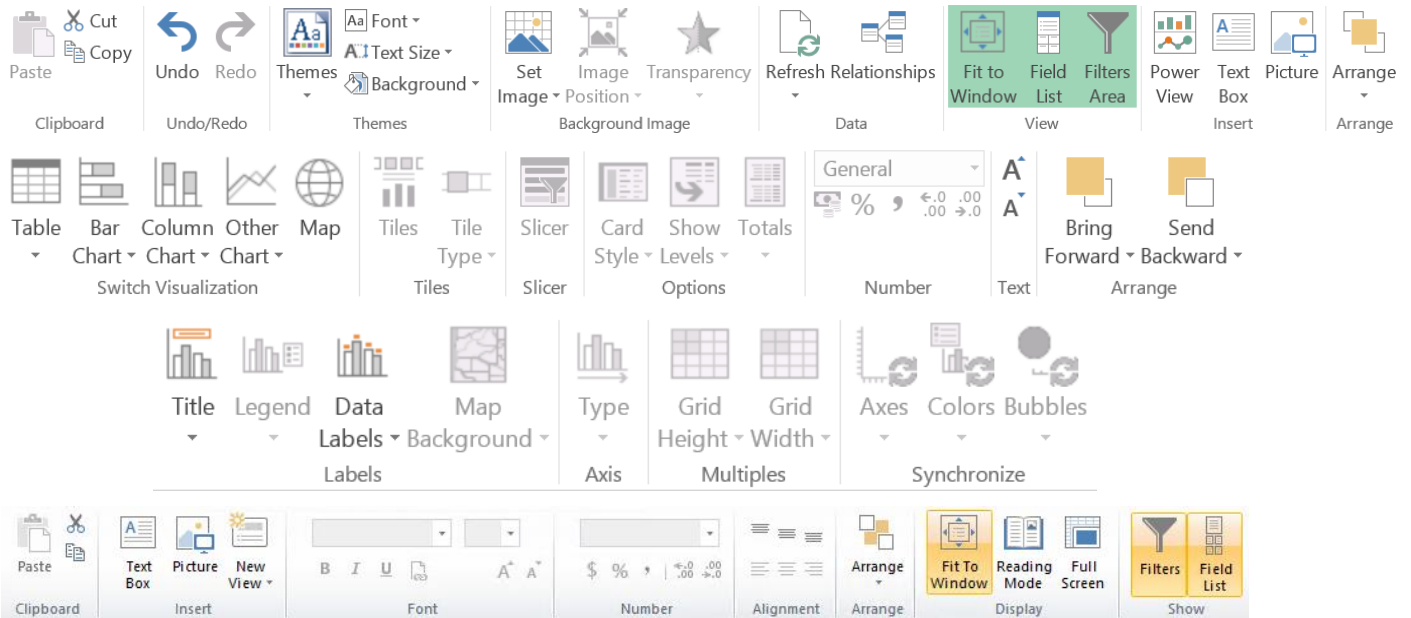
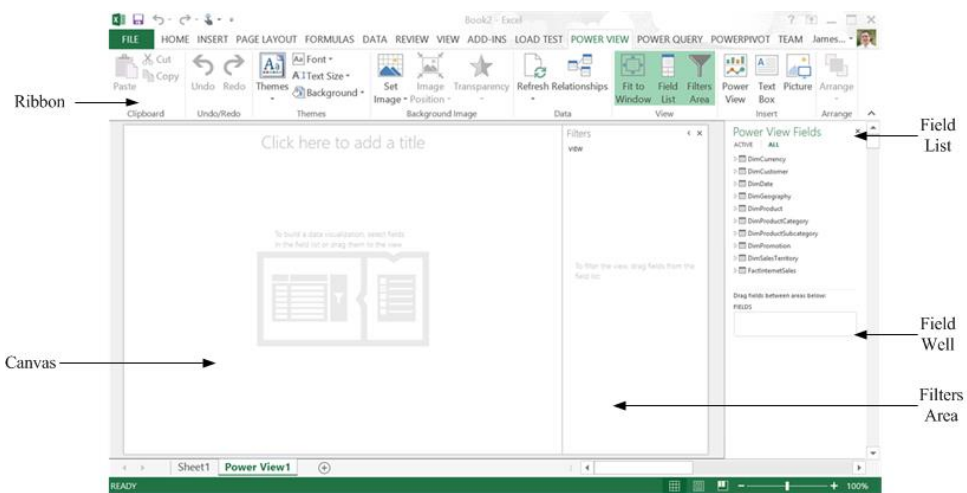
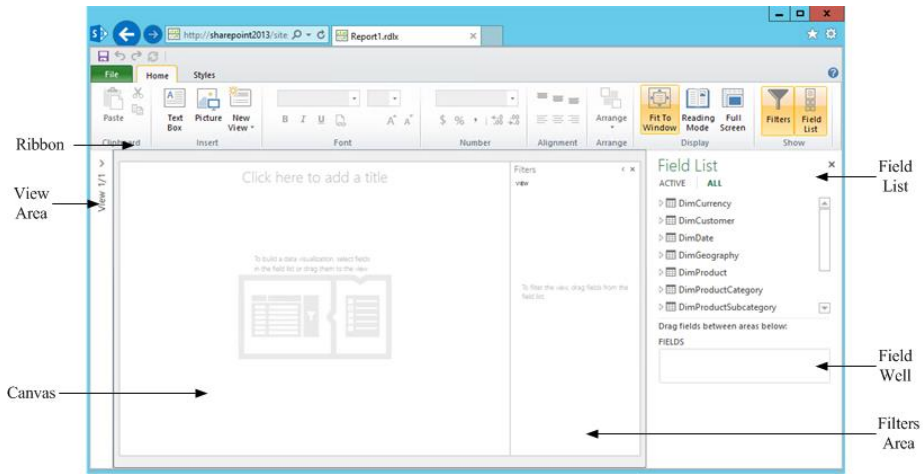
Where do you want to put the data?

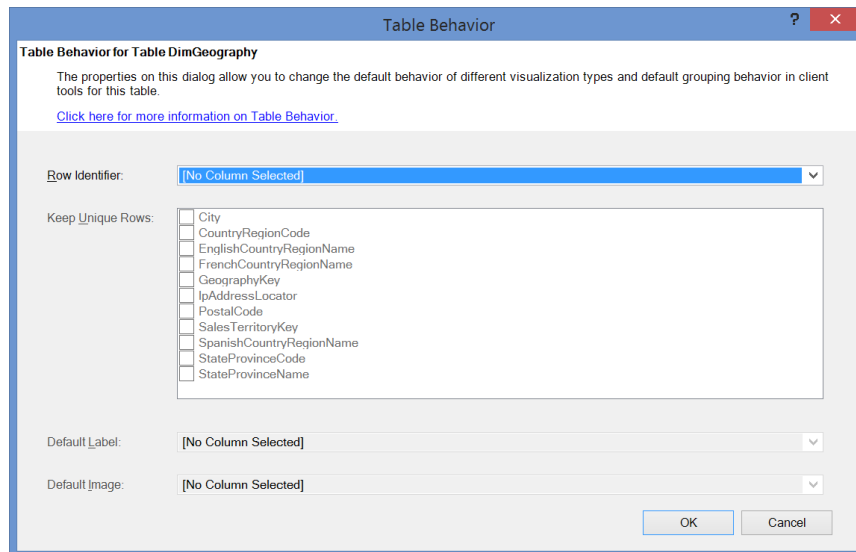
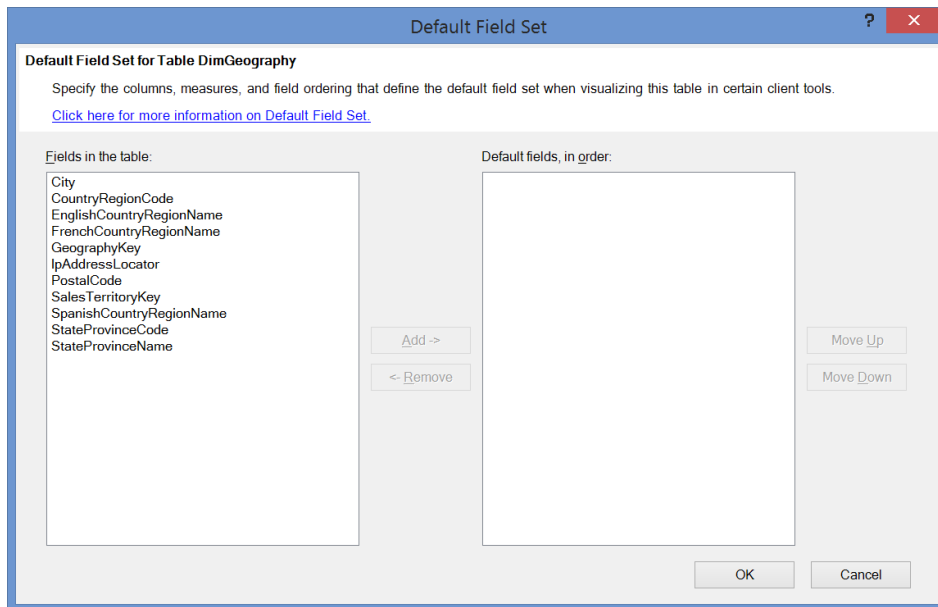
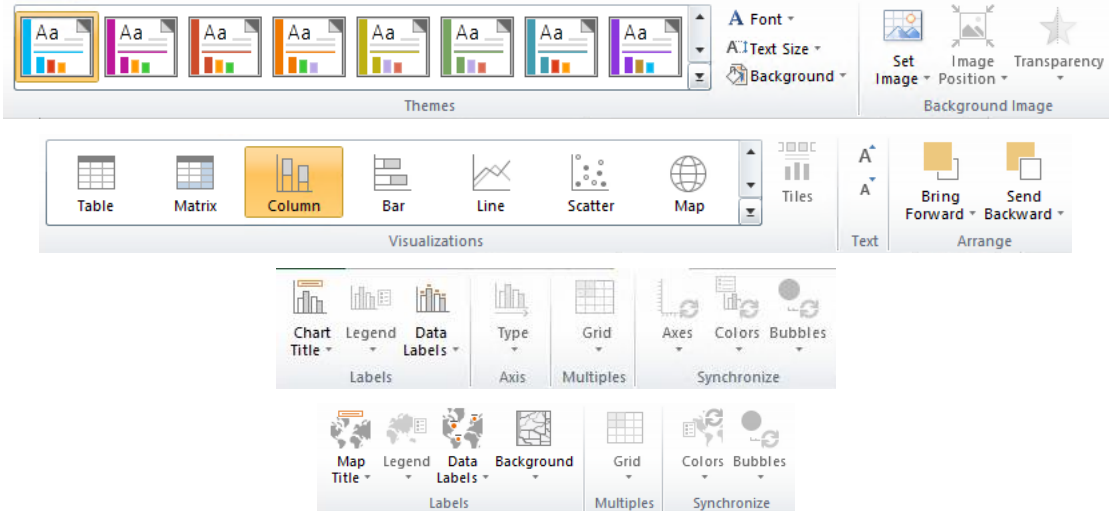
Existing worksheet:

New worksheet

Add this data to the Data Model

Properties... OK Cancel





Data Category ? X

Select Category Group:
All

Category:
[Search Icon]

- Address
- City
- Company
- Continent
- Country/Region
- County
- Date
- Image

OK Cancel

Save As X

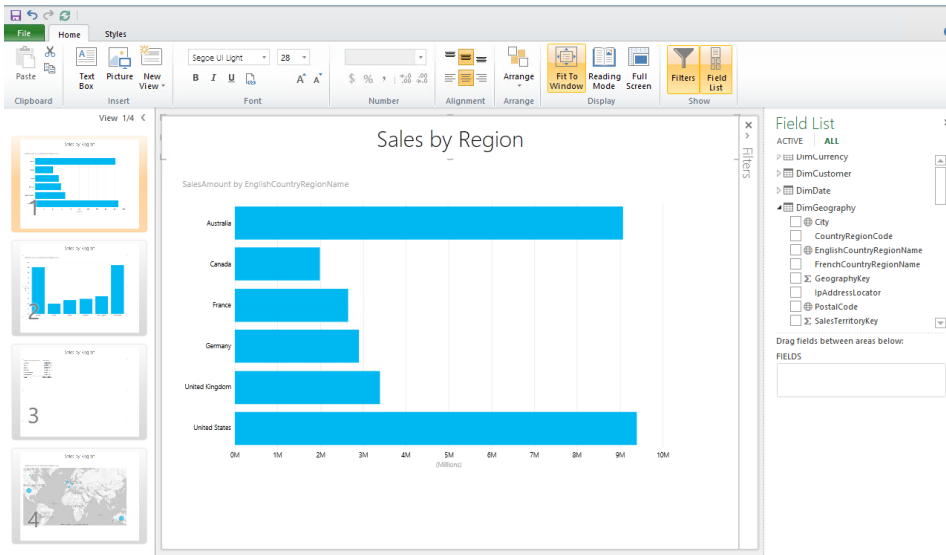
http://sharepoint2013/sites/BICenter/PowerPivot%20Gallery

This folder is empty.

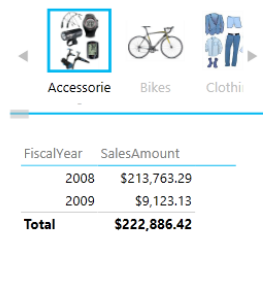
File name: Report1 .rdlx

Include an image of each view in its current state as a preview for other users (in PowerPivot Gallery and other applications)

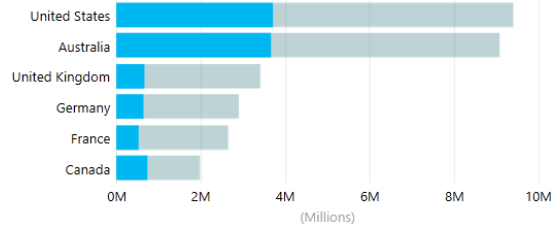
Save Cancel



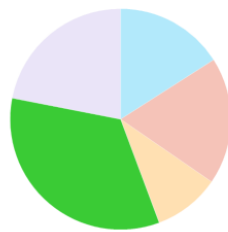
Sales Dashboard



SalesAmount by EnglishCountryRegionName



SalesAmount by EnglishOccupation



EnglishOccupation

- Clerical
- Management
- Manual
- Professional
- Skilled Manual

EnglishEducation SalesAmount

Bachelors	\$4,007,091.18
Graduate Degree	\$1,483,585.18
High School	\$1,472,470.26
Partial College	\$2,511,381.39
Partial High School	\$433,449.28
Total	\$9,907,977.28

ProductImage



ProductSubcategoryImage



Filters



VIEW | CHART

- ▶ Color (All)
- ▶ Gender (All)
- ▶ MaritalStatus (All)

▲ Color (All)

Search...

<input type="checkbox"/> (All)	
<input type="checkbox"/> Black	133
<input type="checkbox"/> Blue	28
<input type="checkbox"/> Grey	1
<input type="checkbox"/> Multi	18
<input type="checkbox"/> NA	254
<input type="checkbox"/> Red	63
<input type="checkbox"/> Silver	52
<input type="checkbox"/> Silver/Black	7
<input type="checkbox"/> White	4
<input type="checkbox"/> Yellow	46

▲ FiscalYear (All)

2005

2011

Filters < X

VIEW

Color contains 'blue'

Show items for which the value:

contains

blue

And Or

apply filter

- contains
- does not contain
- starts with
- does not start with
- is
- is not
- is blank
- is not blank

File

- Save
- Save As
- Print
- Export to PowerPoint
- Options
- Help

Power View

Microsoft SQL Server Reporting Services
Version 11.0.3000.0
© 2012 Microsoft Corporation. All rights reserved.

Diagnostics

[Sync diagnostic information with the server.](#)
Not synced during this session.

Chapter 5, Development Activity with Power View

SharePoint

BROWSE PERFORMANCEPOINT FILES LIBRARY

New Document Upload Document New Folder Edit Document Check Out Check In Discard Check Out View Properties Edit Properties Share Delete

Report Data Source Create a new report data source.

BI Semantic Model Connection Create a new BI Semantic Model Connection

PerformancePoint Data Source Add a new Data Source to the document library using the Dashboard Designer

Office Data Connection File Create a new Office Data Connection File

Universal Data Connection File Provide a standard place for applications, such as Microsoft InfoPath, to store data connection information.

new item or drag files here

ms All Info Approve/Reject ...

Title Name Description Modified

are no files in the view "All Items".



New BI Semantic Model Connection

- Dashboards
- PowerView
- Reporting Services
- PowerPivot
- Data Connections
- Site Contents

BI Semantic Model Connection

Create a connection to a BI Semantic Model that is hosted on an Analysis Services server or embedded within a PowerPivot workbook. Once created, you can use the URL of the BI Semantic Model Connection as a data source for Excel workbooks, Power View reports, or other client applications that connect to BI Semantic Models.

File Name
AdventureWorks Tabular .bism

Description
BISM connection to Adventure Works Tabular model containing data for Internet Sales, Reseller Sales, Inventory, etc.

Connection Information

Specify the location of a BI Semantic Model. For PowerPivot workbooks, enter a complete URL to a workbook hosted in a SharePoint farm running PowerPivot for SharePoint. If the BI Semantic Model is hosted directly on an Analysis Services server, enter the server name and database name.
[Click here](#) to learn more about this page.

Workbook URL or Server Name
SSAS2012\SSAS_TAB

Database (if connecting to a server)
AdventureWorks Tabular Model SQL 2012

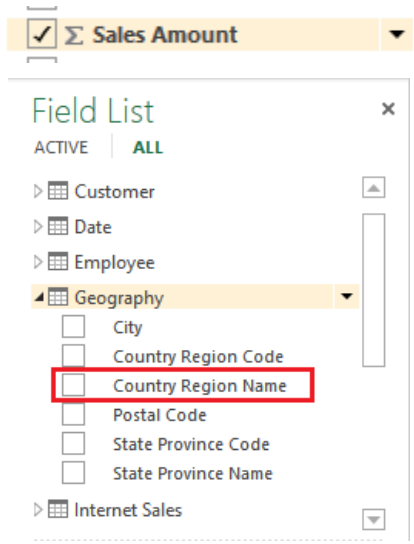
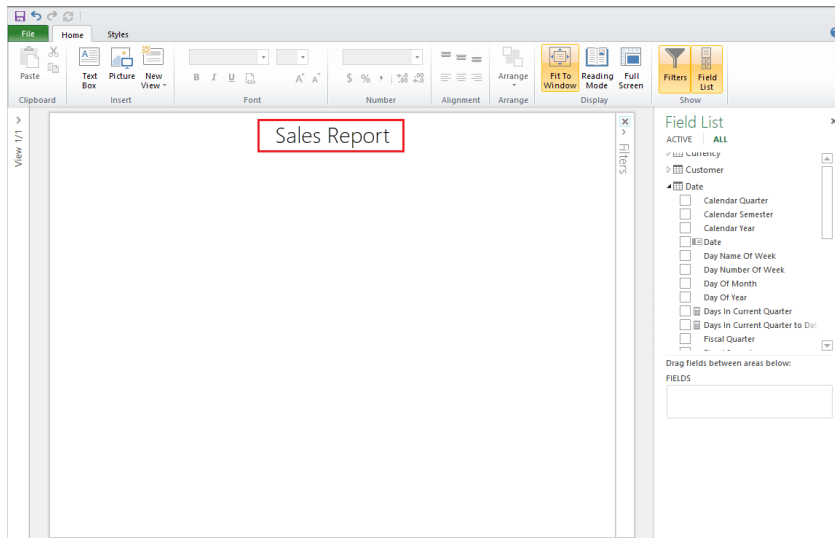


Table Tools Design

Visualizations

Table Matrix Column Bar Line Scatter Map Tiles

Sales Report

Country Region Name	Sales Amount
Australia	9,061,000.58
Canada	1,977,844.86
France	2,644,017.71
Germany	2,894,312.34
United Kingdom	3,391,712.21
United States	9,389,789.51
Total	29,358,677.22

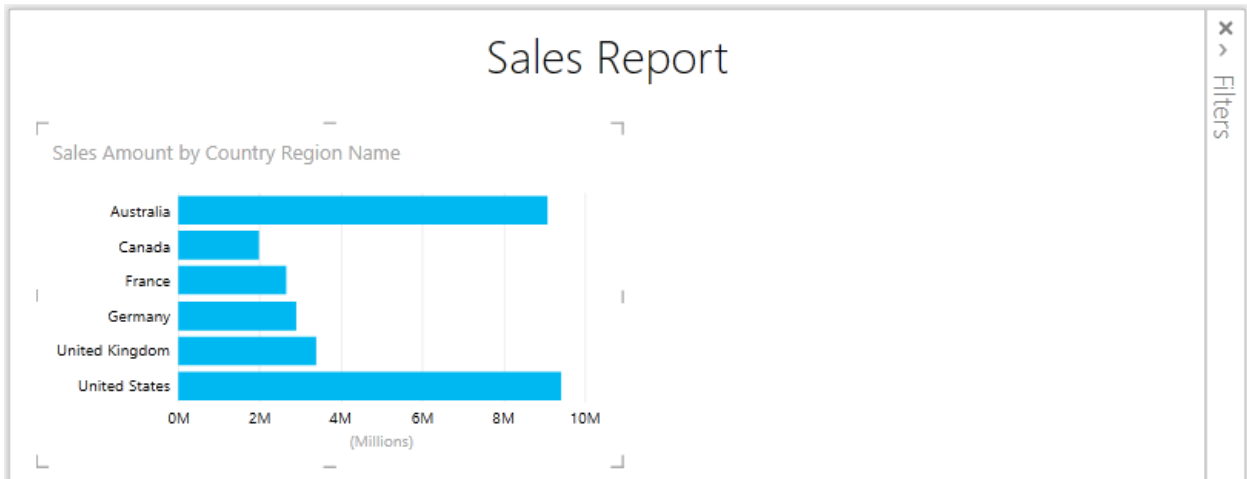


Table Tools Design

Quick Access

Table Matrix Column Bar Line Scatter Map Tiles

Chart

Column 100%... Clustered... Bar 100% Bar Clustered... Line

Scatter

Map

Map

Table

Table Matrix

Other

Card

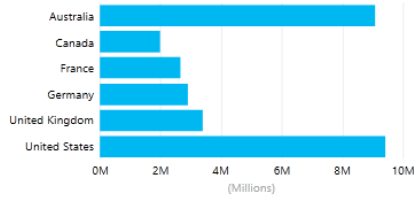
Occupation

- clerical
- Management
- Manual
- professional
- killed Manual

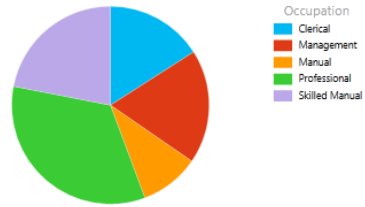
Sales Report

Filters

Sales Amount by Country Region Name



Sales Amount by Occupation

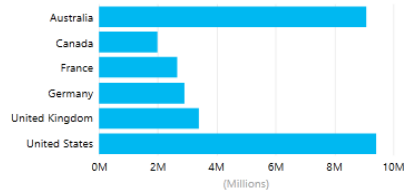


Occupation
Clerical
Management
Manual
Professional
Skilled Manual

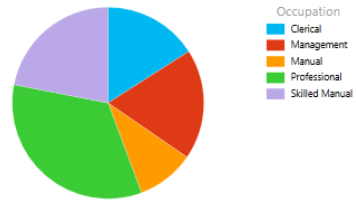
Sales Report

Filters

Sales Amount by Country Region Name

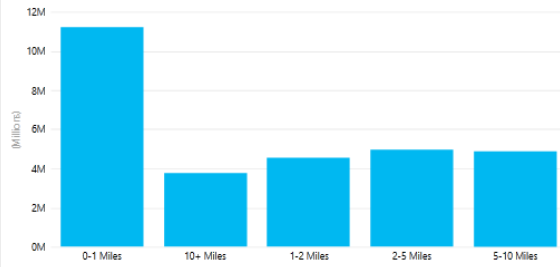


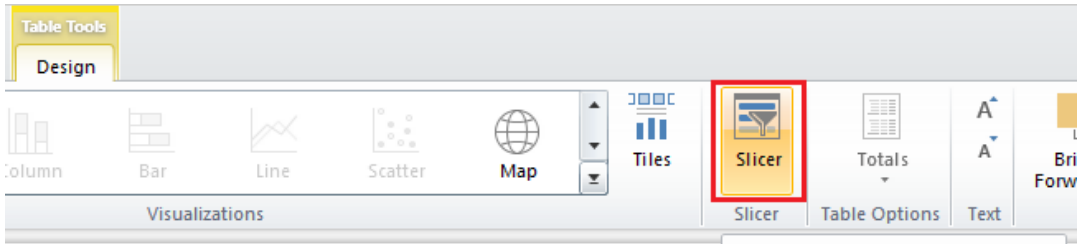
Sales Amount by Occupation



Occupation
Clerical
Management
Manual
Professional
Skilled Manual

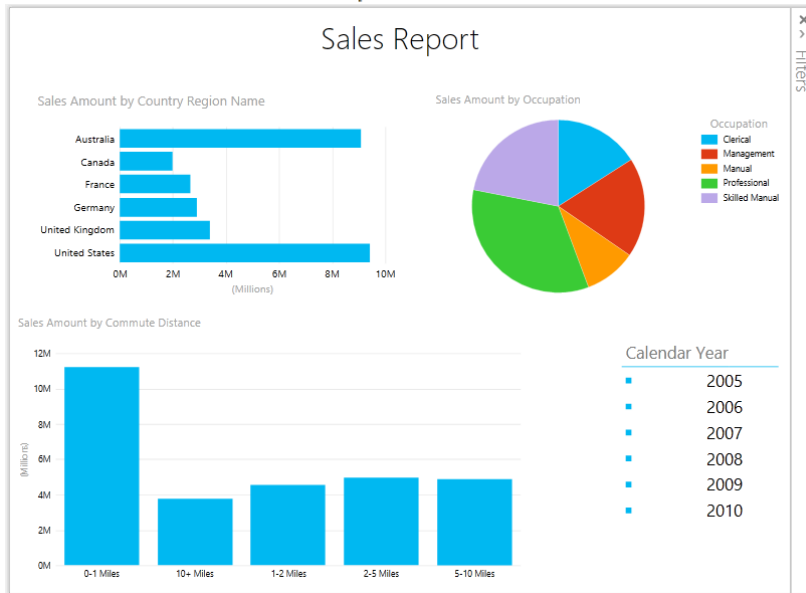
Sales Amount by Commute Distance





Slicer
Convert the data to a slicer.

Sales Report



Save As

Folder: <http://sp2013/PowerView>

This folder is empty.

File name: .rdlx

Include an image of each view in its current state as a preview for other users (in PowerPivot Gallery and other applications)

Save Cancel



AdventureWorks

Search this site

PowerView

- Dashboards
- PowerView
- Reporting Services
- PowerPivot
- Data Connections
- Site Contents

Sales Report

Sales Amount by Country Region Name

Country Region Name	Sales Amount
Australia	100
Canada	150
France	200
Germany	250
United Kingdom	300
United States	350

Data Security Provision

Category	Value
None	10
Provision	20
None	30
Provision	40
None	50

Sales Report

Last Modified By: Bill Anton, Date: 1/8/2014
Created By: Bill Anton

Sales Amount by Calendar Year

Calendar Year	Sales Amount
2005	100
2006	150
2007	200
2008	250
2009	300
2010	350