

Create an account


Email address

Password

Password confirmation

[Have a promo code to enter?](#)

Are you a spam bot?



[Get Another](#) | [Get an audio CAPTCHA](#) | [Help](#)

reCAPTCHA provided by Google - help fight spam and fix books!

Already have an account? [Sign in](#)

You'll love OpenShift because it has:

- Built-in support for Java, Node.js, Ruby, Python, PHP, Perl and extensible functionality to add other languages.
- Powerful command line client tools and a web management console to launch and manage your applications
- Pre-created quickstarts to instantaneously boot your favorite application framework
- A vibrant community forum watched around the clock by an army of developers, evangelists, and OpenShift devotees.
- A wide range of developer resources, including technology specific get started pages, how-to blog posts and videos.

[Learn more about OpenShift](#)

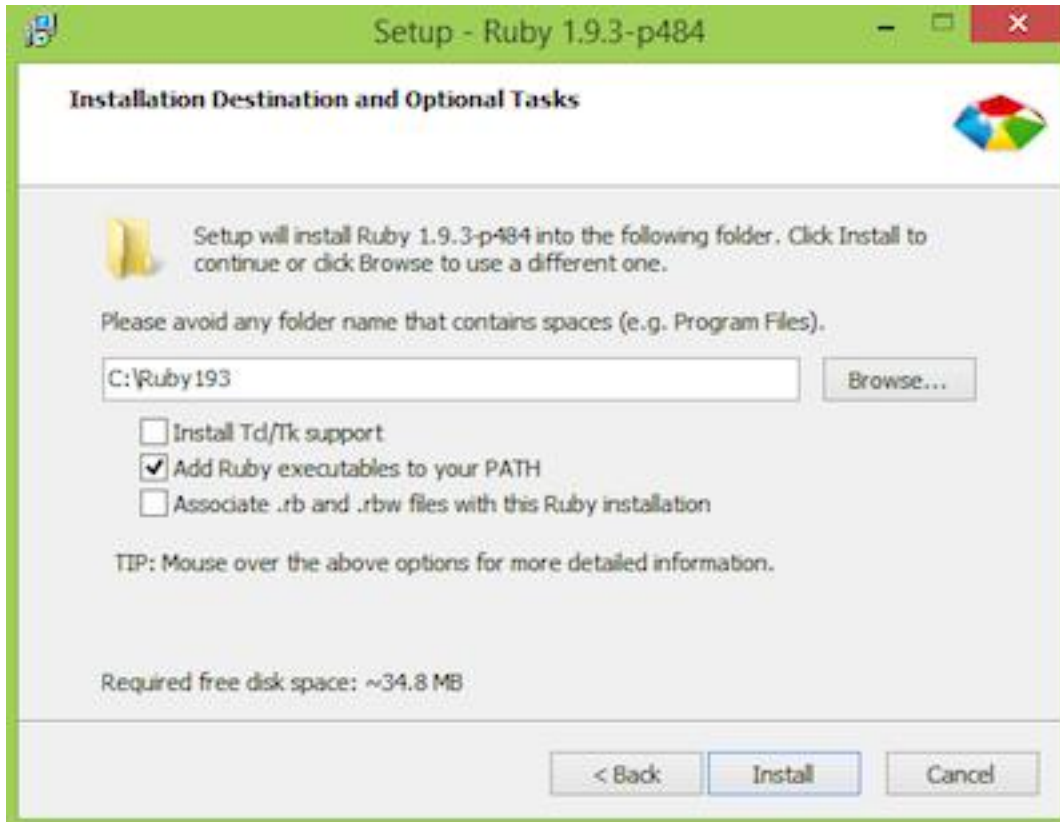
The easy way to install Ruby on Windows

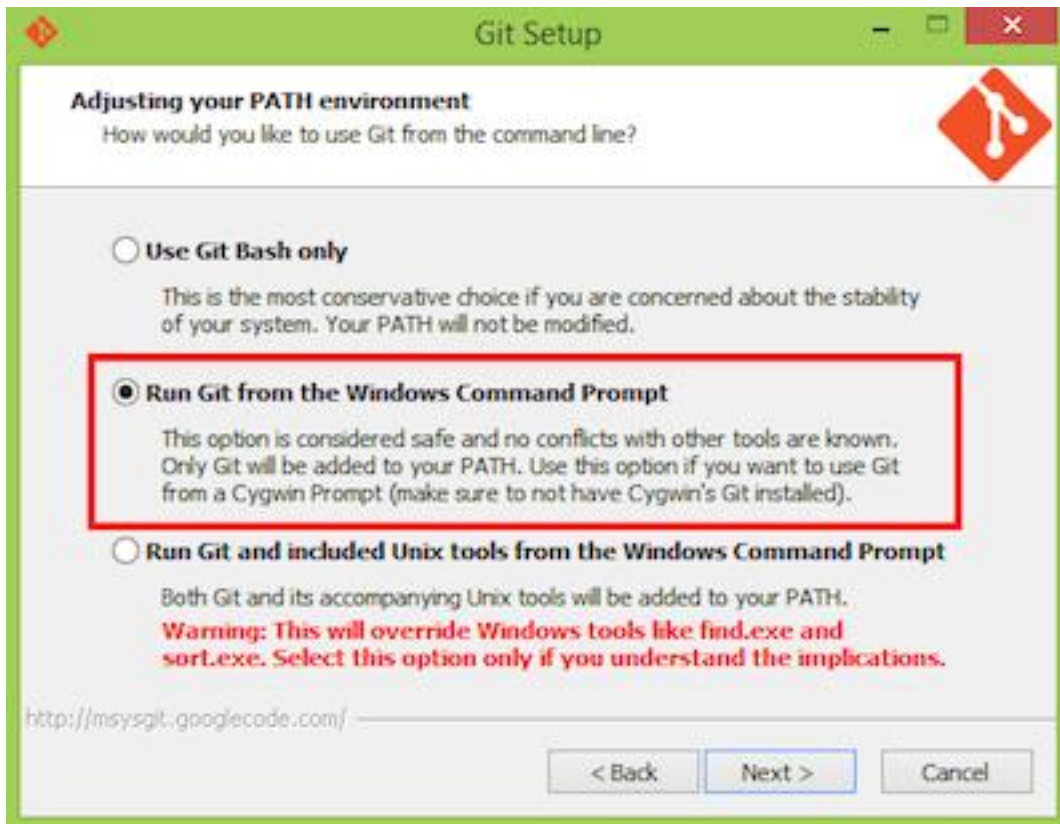
This is a **self-contained Windows-based installer** that includes the **Ruby language**, an execution environment, important **documentation**, and more.

Download

Add-ons







Welcome to OpenShift

myphpapp-packt.rhcloud.com

Welcome to your PHP application on OpenShift

Deploying code changes

OpenShift uses the [Git version control system](#) for your source code, and grants you access to it via the Secure Shell (SSH) protocol. In order to upload and download code to your application you need to give us your [public SSH key](#). You can upload it within the web console or install the RHC command line tool and run `rhc setup` to generate and upload your key automatically.

Working in your local Git repository

If you created your application from the command line and uploaded your SSH key, `rhc` will automatically download a copy of that source code repository (Git calls this 'cloning') to your local system.

If you created the application from the web console, you'll need to manually clone the repository to your local system. Copy the application's source code Git URL and then run:

```
$ git clone <git_url> <directory_to_create>

# Within your project directory
# Commit your changes and push to OpenShift

$ git commit -a -m 'Some commit message'
$ git push
```

- [Learn more about deploying and building your application](#)
- [See the README file in your local application Git repository for more information on the options for deploying applications.](#)

Managing your application

Web Console

You can use the OpenShift web console to enable additional capabilities via cartridges, add collaborator access authorizations, designate custom domain aliases, and manage domain memberships.

Command Line Tools

Installing the [OpenShift RHC client tools](#) allows you complete control of your cloud environment. Read more on how to manage your application from the command line in our [User Guide](#).

Development Resources


- [Developer Center](#)
- [User Guide](#)
- [OpenShift forums](#)
- [Slack Overflow questions for OpenShift](#)
- [IRC channel at #openshift on freenode.net](#)
- [Git documentation](#)

```
Terminal
gshiple@author-workstation ~/code/myphpapp $ ls -al
total 56
drwxr-xr-x  4 gshiple gshiple 4096 Jun 11 21:23 .
drwxr-xr-x 17 gshiple gshiple 4096 Jun 11 21:23 ..
drwxr-xr-x  8 gshiple gshiple 4096 Jun 11 21:23 .git
-rw-r--r--  1 gshiple gshiple 39627 Jun 11 21:23 index.php
drwxr-xr-x  5 gshiple gshiple 4096 Jun 11 21:23 .openshift
gshiple@author-workstation ~/code/myphpapp $ █

~ > git commit -a -m 'Some commit message'
$ git push

With gitsh this gets easier:
```

Applications

1 of 3 

Available in domain packt




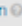
myphpapp

PHP 5.3



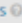
 1 

Add Application...

You may want to...

- Add a database to an app 
- Add a collaborator 
- Use your own domain name 
- Create a scalable application 

From the command line

- The `rhc` client lets you:
- Access logs 
 - Save and restore backups 
 - Connect directly to internal services 

Instant App

[see all](#)



Jenkins Server

CI



Drupal 7

CMS DRUPAL NOT SCALABLE PHP



WordPress 3.x

BLOG CMS NOT SCALABLE

- 1 Choose a type of application
- 2 Configure the application
- 3 Next steps

Based On

WordPress 3.x Quickstart

A semantic personal publishing platform written in PHP with a MySQL back end, focusing on aesthetics, web standards, and usability. Currently using version 3.7.1.

The first time you access the app you'll be asked to set a username and password and give your blog a name. Be sure to track security updates from upstream.

Learn more

OpenShift maintained / Does not receive automatic security updates

Public URL

http:// myblog -packt.rhcloud.com

OpenShift will automatically register this domain name for your application. You can add your own domain name later.

Source Code

git://github.com/openshift/wordpress-ex branch 'master'

Your application will start with an exact copy of the code and configuration provided in this Git repository. OpenShift may expect certain files to exist in certain directories, which may require you to update your repository after creation.

Gears

Small

Gears are the application containers running your code. For most applications, the 'small' gear size provides plenty of resources.

Cartridges

PHP 5.3 and MySQL 5.1

Applications are composed of cartridges - each of which exposes a service or capability to your code. All applications must have a web cartridge.

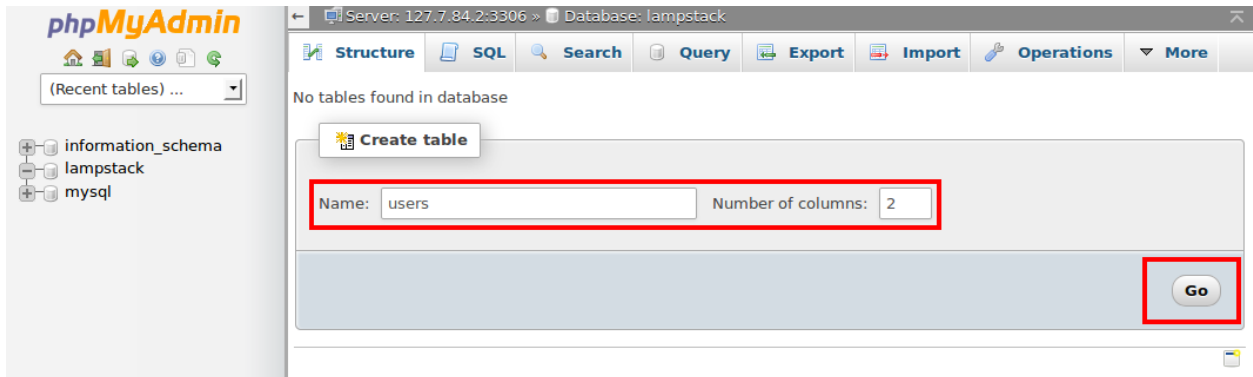
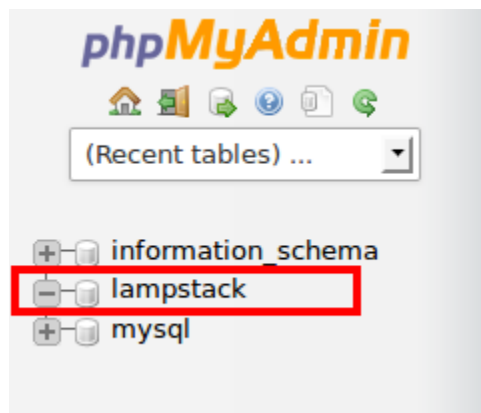
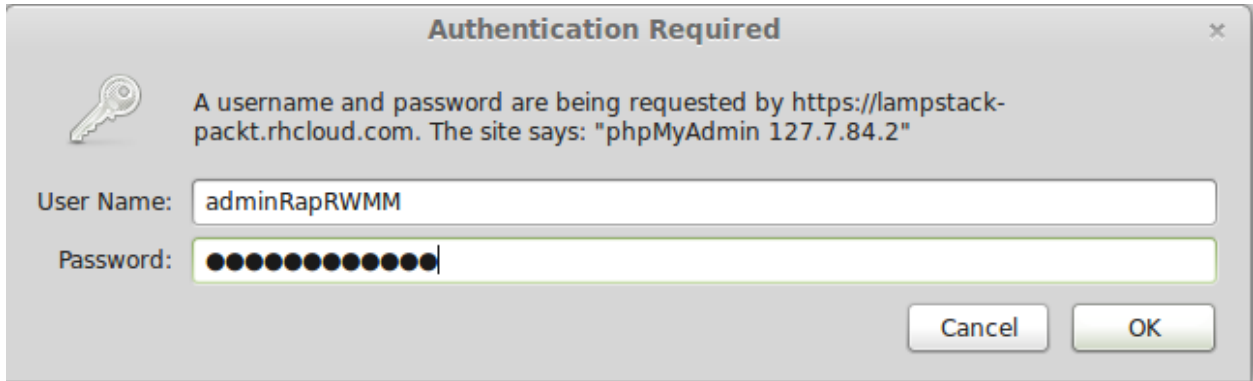
Scaling

No scaling

This application may require additional work to scale. Please see the application's documentation for more information.

OpenShift automatically routes web requests to your web gear. If you allow your application to scale, we'll set up a load balancer and allocate more gears to handle traffic as you need it.

Back Create Application +1



Server: 127.7.84.2:3306 » Database: lampstack » Table: users

Browse Structure SQL Search Insert Export Import Operations Triggers

Table name: users Add 1 column(s) Go

Name	Type	Length/Values	Default	Collation	Attributes	Null	Index
username	VARCHAR	50	None			<input type="checkbox"/>	...
email	VARCHAR	150	None			<input type="checkbox"/>	...

Table comments:

Storage Engine: MyISAM Collation:

PARTITION definition:

Save

Server: 127.7.84.2:3306 » Database: lampstack » Table: users "users"

Browse Structure SQL Search Insert Export Import Operations Triggers

Table	Action	Rows	Type	Collation	Size	Overhead
users	Browse Structure Search Insert Empty Drop	0	MyISAM	utf8_general_ci	1 KiB	-
1 table	Sum	0	MyISAM	utf8_general_ci	1 KiB	0 B

Check All With selected:

Run SQL query/queries on database lampstack:

```
1 INSERT INTO users values ('author', 'author@grantshipley.com');
2 INSERT INTO users values ('OpenShift Help', 'openshift@redhat.com');
```

Columns
username
email

SELECT * SELECT INSERT UPDATE DELETE Clear

[Delimiter ;] Show this query here again Retain query box

Go

Showing rows 0 - 1 (2 total, Query took 0.0004 sec)

```
SELECT *  
FROM `users`  
LIMIT 0, 30
```

Profiling [Inline] [Edit] [Explain SQL] [Create PHP Code] [Refresh]

Show : Start row: Number of rows: Headers every rows

Options

username	email
author	author@grantshiple.com
OpenShift Help	openshift@redhat.com

lampstack-packt.rhcloud.com/hellodb.php

Username	Email Address
author	author@grantshiple.com
OpenShift Help	openshift@redhat.com

App Resource Data

Pause data updates

Memory

CPU

App Info

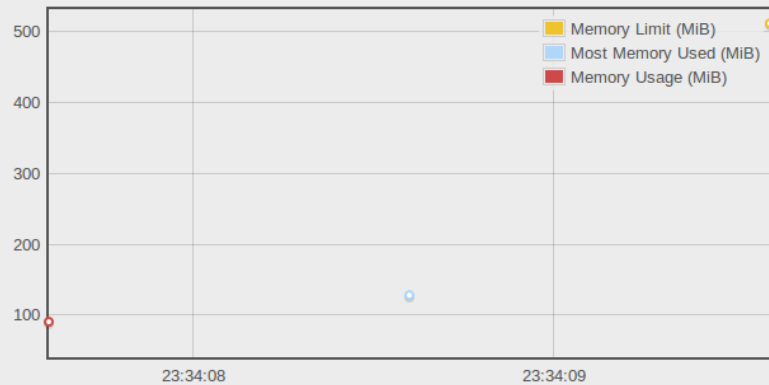
Add swap data

Statistics

Times memory limit reached

Swappiness

70



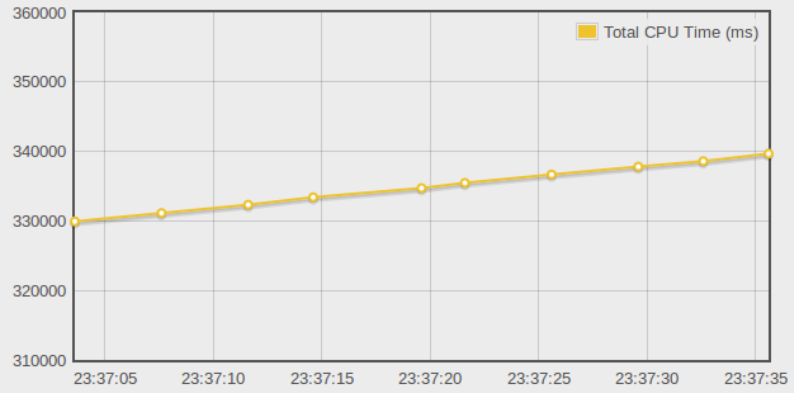
App Resource Data

Pause data updates

Memory

CPU

App Info



App Resource Data

Pause data updates

Memory

CPU

App Info

App status

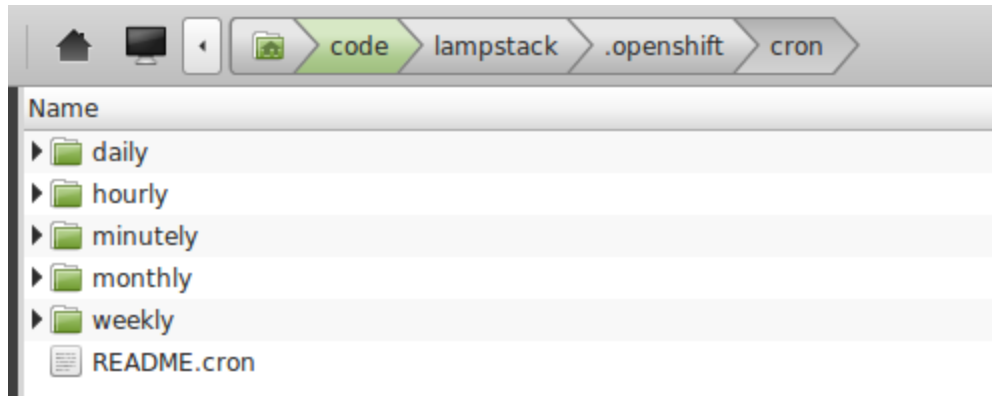
THAWED

Network Class ID

69288

Tasks (pid)

- 105666 105803 105805 105806 105807 105808 105810 105811 105812 105813 105814 105841 105842 105843 105844 105933 105935 105936 105937 135405 135410 135412 141915 155331 155340 155400 160287 160908 161825 164339 164340 164341 164342 164343 164345 493113 493126 493127



```
Thu Jan 16 20:05:17 EST 2014
Thu Jan 16 20:06:12 EST 2014
Thu Jan 16 20:07:08 EST 2014
Thu Jan 16 20:08:12 EST 2014
```

Chapter 3



```
Terminal
gshiple@author-workstation ~ $ rhc ssh lampstack
Connecting to 52d5d7c05973ca5f33000015@lampstack-packt.rhcloud.com ...

*****

You are accessing a service that is for use only by authorized users.
If you do not have authorization, discontinue use at once.
Any use of the services is subject to the applicable terms of the
agreement which can be found at:
https://www.openshift.com/legal

*****

Welcome to OpenShift shell

This shell will assist you in managing OpenShift applications.

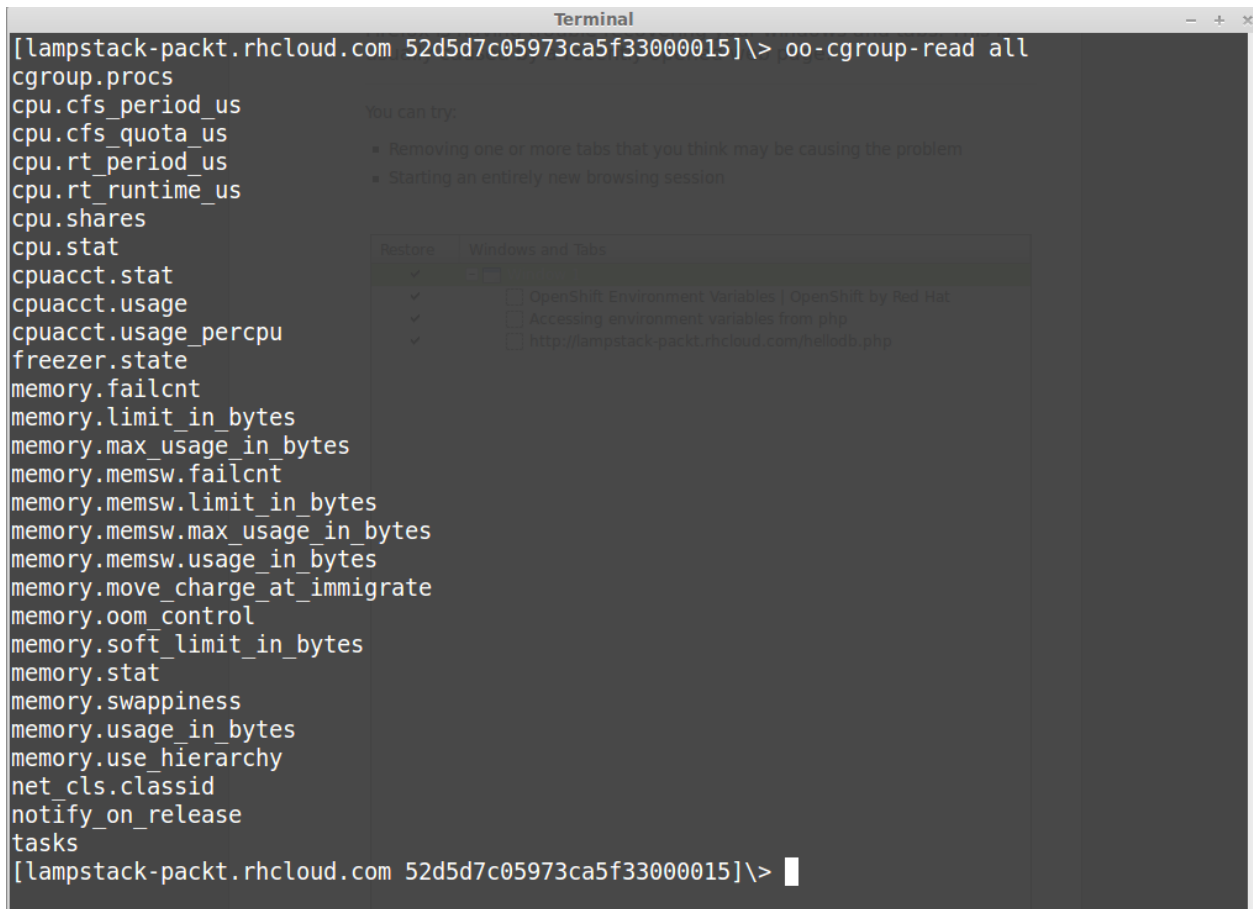
!!! IMPORTANT !!! IMPORTANT !!! IMPORTANT !!!
Shell access is quite powerful and it is possible for you to
accidentally damage your application. Proceed with care!
If worse comes to worst, destroy your application with "rhc app delete"
and recreate it
!!! IMPORTANT !!! IMPORTANT !!! IMPORTANT !!!

Type "help" for more info.

*** This gear has been temporarily unidled. To keep it active, access
*** your app @ http://lampstack-packt.rhcloud.com/

[lampstack-packt.rhcloud.com 52d5d7c05973ca5f33000015]\> █
```

```
Terminal
[lampstack-packt.rhcloud.com 52d5d7c05973ca5f33000015]\> _oo-cgroup-read all
cgroup.procs
cpu.cfs_period_us
cpu.cfs_quota_us
cpu.rt_period_us
cpu.rt_runtime_us
cpu.shares
cpu.stat
cpuacct.stat
cpuacct.usage
cpuacct.usage_percpu
freezer.state
memory.failcnt
memory.limit_in_bytes
memory.max_usage_in_bytes
memory.memsw.failcnt
memory.memsw.limit_in_bytes
memory.memsw.max_usage_in_bytes
memory.memsw.usage_in_bytes
memory.move_charge_at_immigrate
memory.oom_control
memory.soft_limit_in_bytes
memory.stat
memory.swappiness
memory.usage_in_bytes
memory.use_hierarchy
net_cls.classid
notify_on_release
tasks
[lampstack-packt.rhcloud.com 52d5d7c05973ca5f33000015]\> |
```

The image shows a terminal window with a list of cgroup parameters. A semi-transparent browser window is overlaid on the terminal, displaying a 'You can try:' section with two bullet points: 'Removing one or more tabs that you think may be causing the problem' and 'Starting an entirely new browsing session'. Below this, there is a 'Restore' section with a 'Windows and Tabs' header and three entries, each with a checkmark: 'OpenShift Environment Variables | OpenShift by Red Hat', 'Accessing environment variables from php', and 'http://lampstack-packt.rhcloud.com/hellodb.php'. The terminal prompt is currently at the end of the second line of the list.

```

Terminal
[lampstack-packt.rhcloud.com 52d5d7c05973ca5f33000015]\> env | grep OPENSHIFT
OPENSHIFT_SECRET_TOKEN=zHpTehvA6ZnwKsafswIkMcuoXRHAhdnn-a0oXQwlrmwzHeDQeZtxFFEK8-IH0xcmnTUNJiuJbXJZM44HGm8_wJgzHjt4AymJWv5UC
oke7ZkxzvbVr_IgEdg95Wgyg6gF
OPENSHIFT_PHP_IDENT=redhat:php:5.3:0.0.10
OPENSHIFT_GEAR_MEMORY_MB=512
OPENSHIFT_MYSQL_DIR=/var/lib/openshift/52d5d7c05973ca5f33000015/mysql/
OPENSHIFT_DEPLOYMENT_TYPE=git
OPENSHIFT_PHP_LOG_DIR=/var/lib/openshift/52d5d7c05973ca5f33000015/php/logs/
OPENSHIFT_DEPLOYMENTS_DIR=/var/lib/openshift/52d5d7c05973ca5f33000015/app-deployments/
OPENSHIFT_METRICS_DIR=/var/lib/openshift/52d5d7c05973ca5f33000015/metrics/
OPENSHIFT_TMP_DIR=/tmp/
OPENSHIFT_MYSQL_DB_PORT=3306
OPENSHIFT_REPO_DIR=/var/lib/openshift/52d5d7c05973ca5f33000015/app-root/runtime/repo/
OPENSHIFT_HOMEDIR=/var/lib/openshift/52d5d7c05973ca5f33000015/
OPENSHIFT_GEAR_NAME=lampstack
OPENSHIFT_PHPMYADMIN_IP=127.7.84.3
OPENSHIFT_MYSQL_DB_HOST=127.7.84.2
OPENSHIFT_PYPI_MIRROR_URL=http://mirror1.ops.rhcloud.com/mirror/python/web/simple
OPENSHIFT_CRON_DIR=/var/lib/openshift/52d5d7c05973ca5f33000015/cron/
OPENSHIFT_MYSQL_DB_PASSWORD=JerElgadNgFP
OPENSHIFT_APP_SSH_PUBLIC_KEY=/var/lib/openshift/52d5d7c05973ca5f33000015/.openshift_ssh/id_rsa.pub
OPENSHIFT_CLOUD_DOMAIN=rhcloud.com
OPENSHIFT_MYSQL_IDENT=redhat:mysql:5.1:0.2.7
OPENSHIFT_PHPMYADMIN_VERSION=4
OPENSHIFT_BUILD_DEPENDENCIES_DIR=/var/lib/openshift/52d5d7c05973ca5f33000015/app-root/runtime/build-dependencies/
OPENSHIFT_METRICS_PORT=8080
OPENSHIFT_MYSQL_DB_USERNAME=adminRapRWMM
OPENSHIFT_PHP_PATH_ELEMENT=/var/lib/openshift/52d5d7c05973ca5f33000015/php/phplib/pear/pear
OPENSHIFT_MYSQL_DB_SOCKET=/var/lib/openshift/52d5d7c05973ca5f33000015/mysql/socket/mysql.sock
OPENSHIFT_METRICS_LOG_DIR=/var/lib/openshift/52d5d7c05973ca5f33000015/metrics/logs/
OPENSHIFT_LAMPSTACK_DEBUG=1
OPENSHIFT_PHP_DIR=/var/lib/openshift/52d5d7c05973ca5f33000015/php/
OPENSHIFT_MYSQL_DB_URL=mysql://adminRapRWMM:JerElgadNgFP@127.7.84.2:3306/
OPENSHIFT_PHPMYADMIN_LOG_DIR=/var/lib/openshift/52d5d7c05973ca5f33000015/phpmyadmin/logs/
OPENSHIFT_PHPMYADMIN_DIR=/var/lib/openshift/52d5d7c05973ca5f33000015/phpmyadmin/
OPENSHIFT_APP_DNS=lampstack-packt.rhcloud.com
OPENSHIFT_PRIMARY_CARTRIDGE_DIR=/var/lib/openshift/52d5d7c05973ca5f33000015/php/
OPENSHIFT_GEAR_DNS=lampstack-packt.rhcloud.com
OPENSHIFT_CRON_IDENT=redhat:cron:1.4:0.0.9
OPENSHIFT_CARTRIDGE_SDK_BASH=/usr/lib/openshift/cartridge_sdk/bash/sdk
OPENSHIFT_APP_SSH_KEY=/var/lib/openshift/52d5d7c05973ca5f33000015/.openshift_ssh/id_rsa
OPENSHIFT_LAMPSTACK_DEBUG_LEVEL=DEBUG
OPENSHIFT_PHP_PORT=8080
OPENSHIFT_DEPLOYMENT_BRANCH=master
OPENSHIFT_PHPMYADMIN_IDENT=redhat:phpmyadmin:4:0.0.7
OPENSHIFT_PHP_VERSION=5.3
OPENSHIFT_DEPENDENCIES_DIR=/var/lib/openshift/52d5d7c05973ca5f33000015/app-root/runtime/dependencies/
OPENSHIFT_KEEP_DEPLOYMENTS=1
OPENSHIFT_APP_NAME=lampstack
OPENSHIFT_LAMPSTACK_LOGLEVEL=INFO
OPENSHIFT_METRICS_IP=127.7.84.4
OPENSHIFT_MYSQL_DB_LOG_DIR=/var/lib/openshift/52d5d7c05973ca5f33000015/mysql/log/
OPENSHIFT_DATA_DIR=/var/lib/openshift/52d5d7c05973ca5f33000015/app-root/data/
OPENSHIFT_NAMESPACE=packt
OPENSHIFT_AUTO_DEPLOY=true
OPENSHIFT_GEAR_UUID=52d5d7c05973ca5f33000015
OPENSHIFT_METRICS_IDENT=redhat:metrics:0.1:0.0.5
OPENSHIFT_BROKER_HOST=openshift.redhat.com
OPENSHIFT_APP_UUID=52d5d7c05973ca5f33000015
OPENSHIFT_PHPMYADMIN_PORT=8080
OPENSHIFT_UMASK=077
OPENSHIFT_CARTRIDGE_SDK_RUBY=/usr/lib/openshift/cartridge_sdk/ruby/sdk.rb
OPENSHIFT_PHP_IP=127.7.84.1
[lampstack-packt.rhcloud.com 52d5d7c05973ca5f33000015]\>

```

Chapter 4

Eclipse Downloads

Packages Developer Builds

Eclipse Kepler (4.3.1) SR1 Packages for Linux



Eclipse Standard 4.3.1, 197 MB

Downloaded 4,035,431 Times [Other Downloads](#)

The Eclipse Platform, and all the tools needed to develop and debug it: Java and Plug-in Development Tooling, Git and CVS...



[Linux 32 Bit](#)
[Linux 64 Bit](#)

Package Solutions

Filter Packages



Eclipse IDE for Java EE Developers, 245 MB

Downloaded 2,082,137 Times

Tools for Java developers creating Java EE and Web applications, including a Java IDE, tools for Java EE, JPA, JSF, Mylyn...



[Linux 32 Bit](#)
[Linux 64 Bit](#)



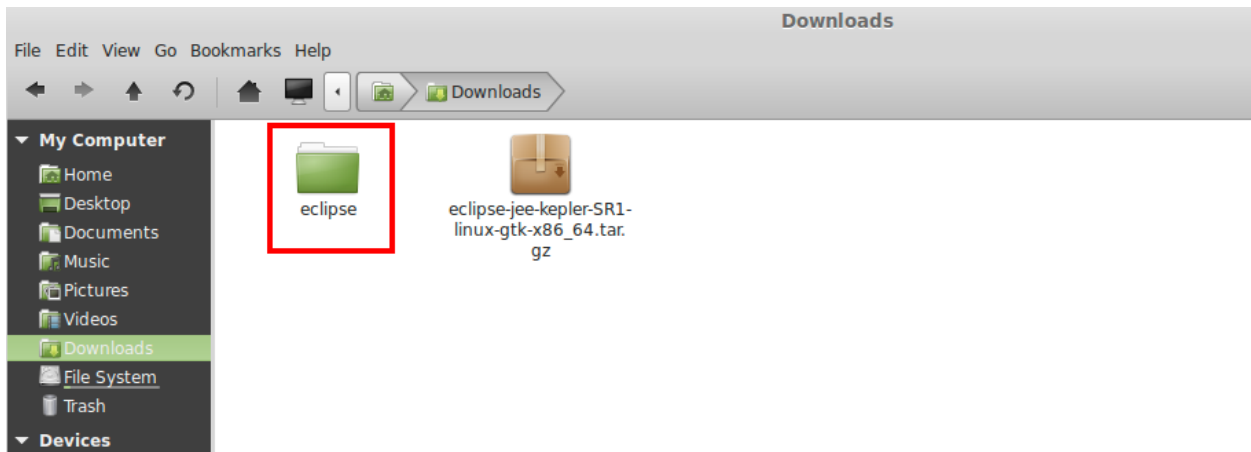
Eclipse IDE for Java Developers, 150 MB

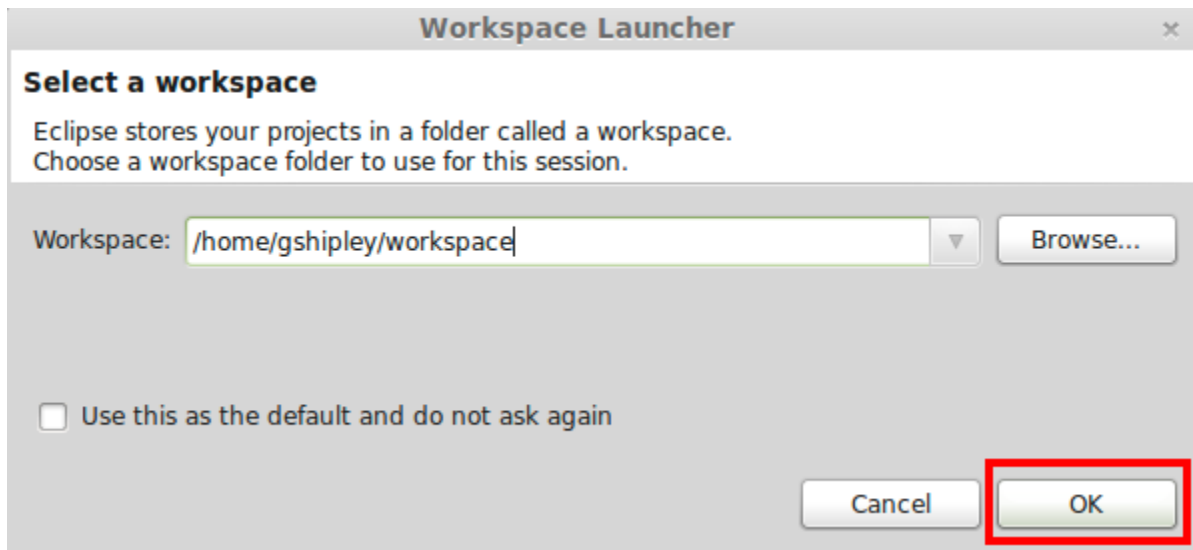
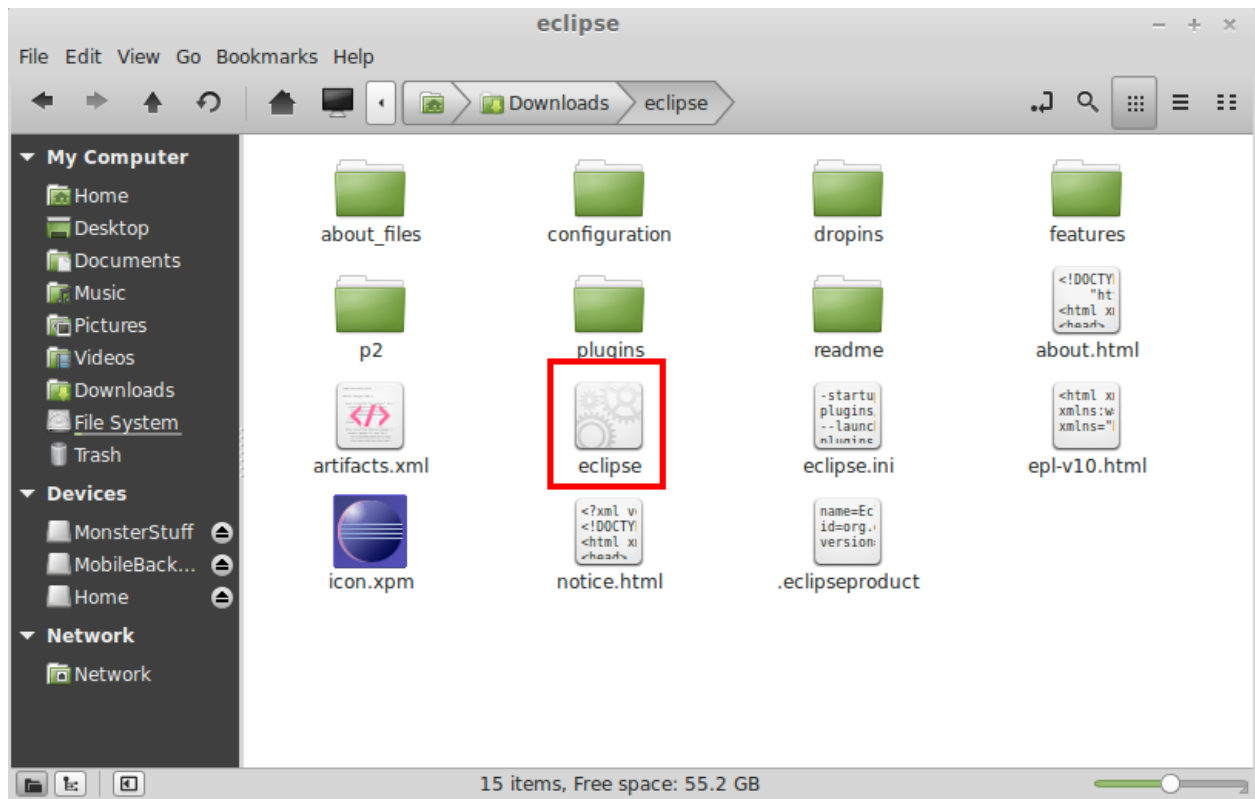
Downloaded 931,346 Times

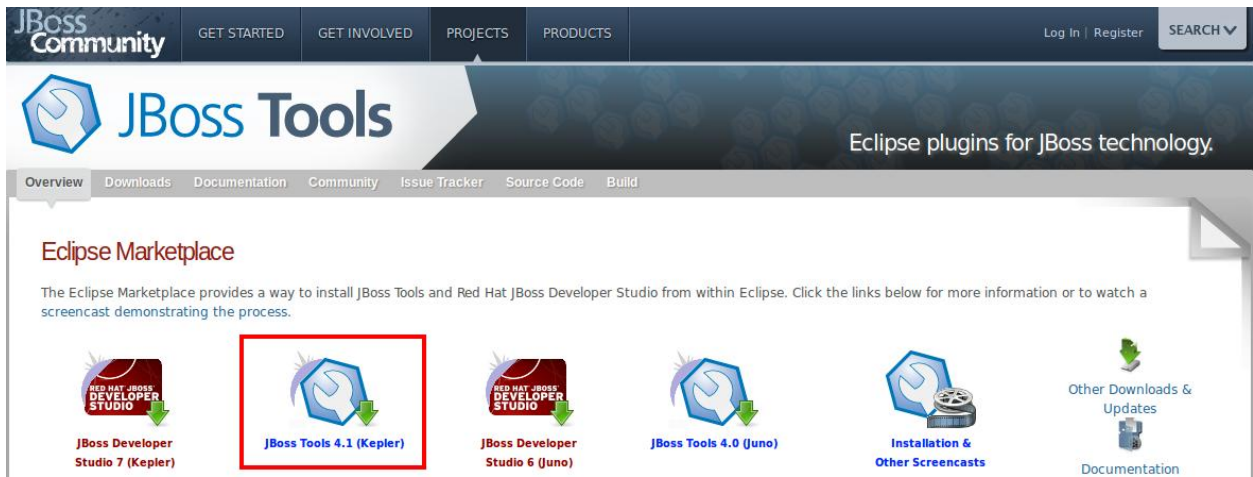
The essential tools for any Java developer, including a Java IDE, a CVS client, Git client, XML Editor, Mylyn, Maven integration...



[Linux 32 Bit](#)
[Linux 64 Bit](#)







eclipse marketplace

Visit other Eclipse Sites

Home My Marketplace Add Content Login

Markets »

JBoss Tools (Kepler) 4.1.1.Final

Search »

23

MPC Downloads Top 10

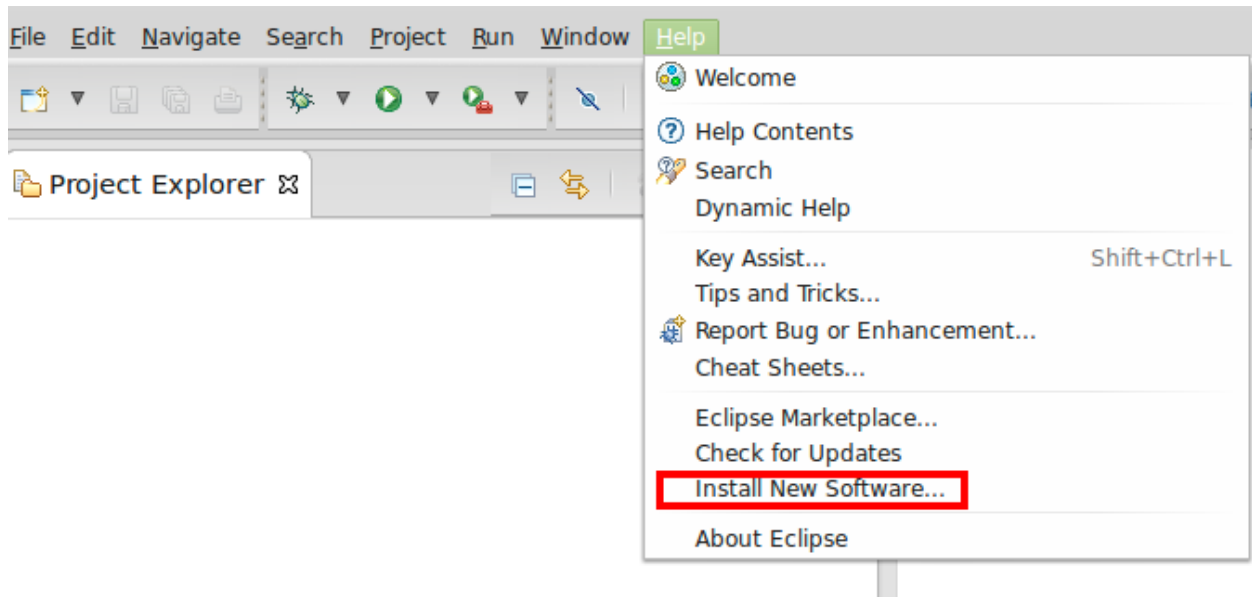
Install

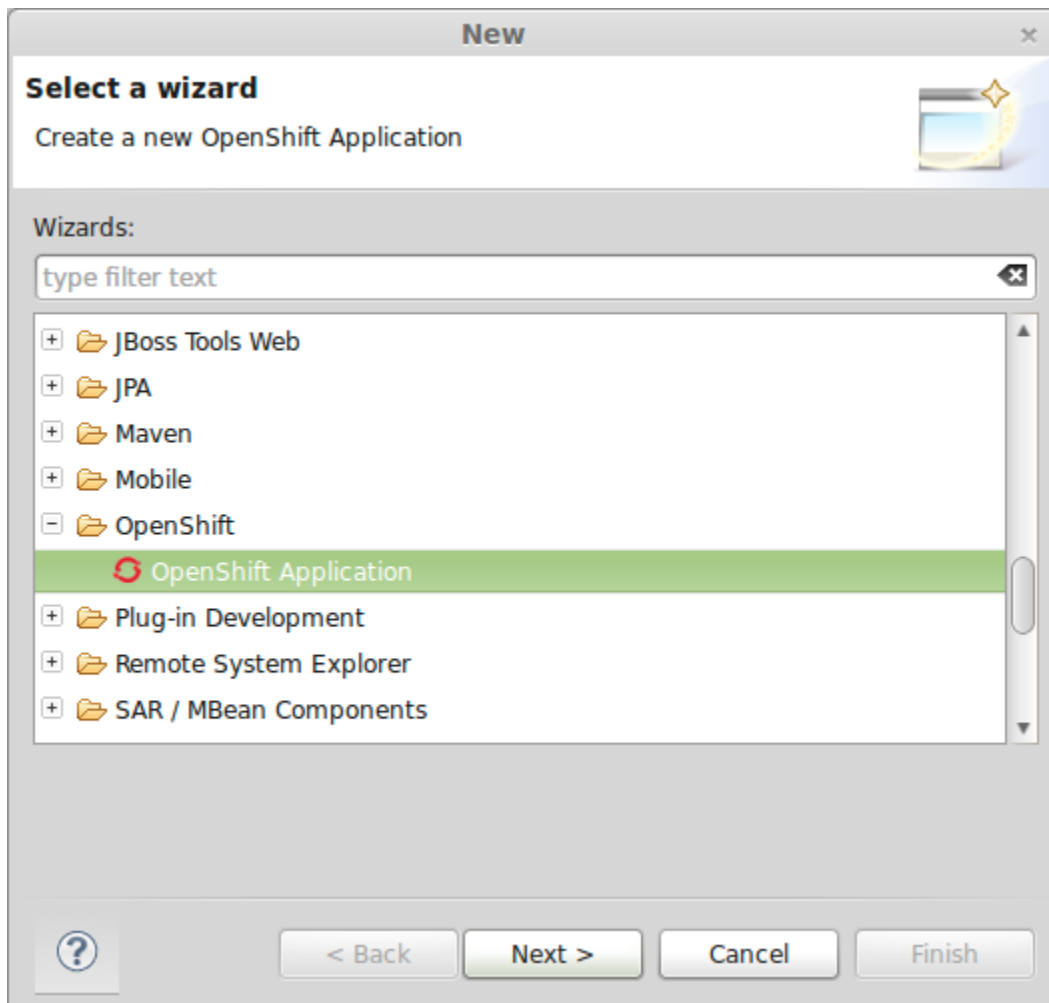
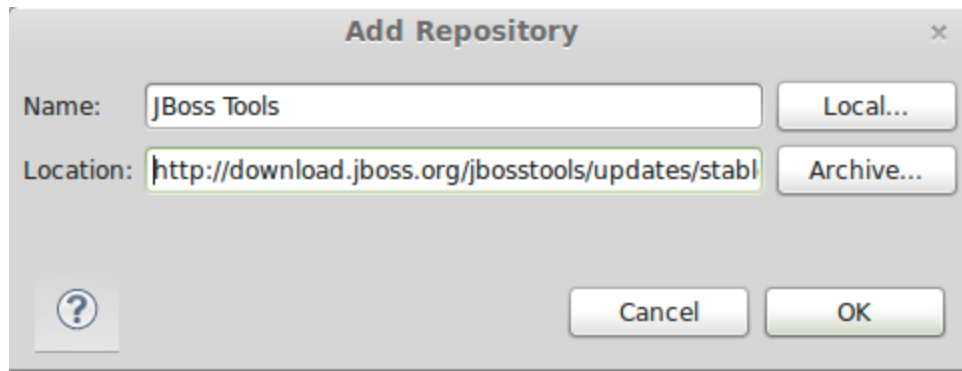


File Edit Navigate Search Project Run Window Help

- Welcome
- Help Contents
- Search
- Dynamic Help
- Key Assist... Shift+Ctrl+L
- Tips and Tricks...
- Report Bug or Enhancement...
- Cheat Sheets...
- Eclipse Marketplace...
- Check for Updates
- Install New Software...**
- About Eclipse

Project Explorer





Select Existing Application

×

Select Existing Application

Please choose the existing application that you want to import.



OPENSIFT

Existing Applications on OpenShift

Name	Type	URL
firstphp	php-5.3	http://firstphp-packt.rhcloud.com/
lampstack	php-5.3	http://lampstack-packt.rhcloud.com/

Refresh

Details...


Cancel

OK

New OpenShift Application

Import an existing OpenShift application

Configure the cloning settings by specifying the clone destination if you create a new project, and the git remote name if you're using an existing project.



Cloning settings

Use default clone destination

Git Clone Destination:

Use default remote name

Remote name:

Make sure that you have SSH keys added to your OpenShift account author@grantshipley.com via [SSH Keys wizard](#) and that the private keys are listed in [SSH2 Preferences](#)

Project Explorer

- lampstack [lampstack master]
 - libs
 - misc
 - php
 - health_check.php
 - hellodb.php
 - index.php
 - deplist.txt
 - README.md

New OpenShift Application



New or existing OpenShift Application

Create a new OpenShift Application.



OPENSIFT

Domain: pac

Existing Appli

Use existi

New applicati

Name:

Type:

Gear profile:

Embeddable

10gen I

Cron 1.

Jenkins

MongoD

MySQL 5.1 (mysql-5.1)

MySQL 5.5 (mysql-5.5)

OpenShift Metrics 0.1 (metrics-0.1)

PostgreSQL 8.4 (postgresql-8.4)

PostgreSQL 9.2 (postgresql-9.2)

- Do-It-Yourself 0.1 (diy-0.1)
- JBoss Application Server 7 (jbossas-7)
- JBoss Enterprise Application Platform 6 (jbossseap-6)
- Tomcat 6 (JBoss EWS 1.0) (jbosssews-1.0)
- Tomcat 7 (JBoss EWS 2.0) (jbosssews-2.0)
- Jenkins Server (jenkins-1)
- Node.js 0.10 (nodejs-0.10)
- Node.js 0.6 (nodejs-0.6)
- Perl 5.10 (perl-5.10)
- PHP 5.3 (php-5.3)
- PHP 5.4 (php-5.4)
- Python 2.6 (python-2.6)
- Python 2.7 (python-2.7)
- Python 3.3 (python-3.3)
- Ruby 1.8 (ruby-1.8)
- Ruby 1.9 (ruby-1.9)
- PHP 5.3 with Zend Server 5.6 (zend-5.6)
- PHP 5.4 with Zend Server 6.1 (zend-6.1)

Advanced >>

< Back

Next >

Cancel

Finish

New OpenShift Application



New or existing OpenShift Application

Create a new OpenShift Application.



OPENSIFT

Domain:

[Manage Domains](#)

Existing Application

Use existing application:

New application

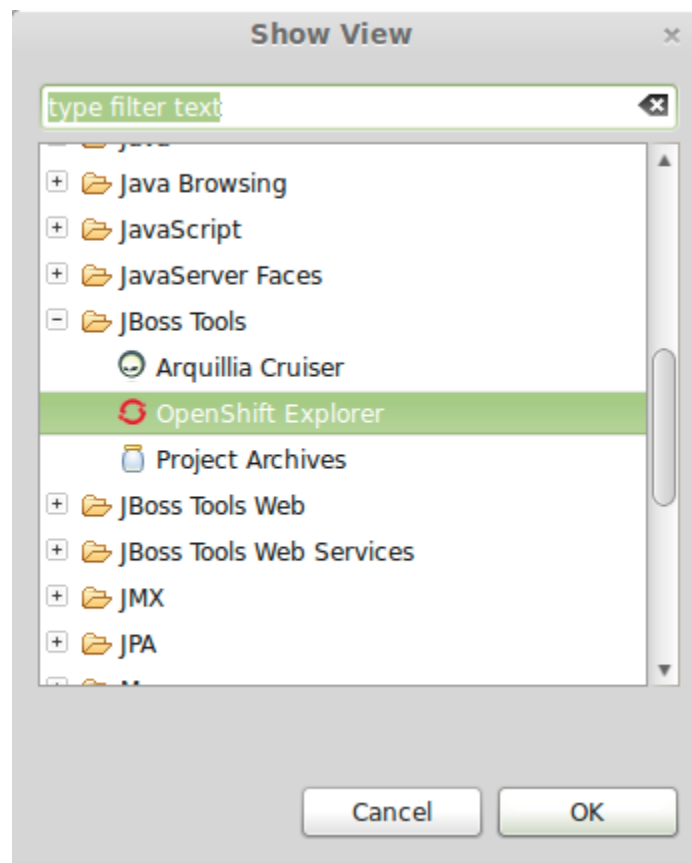
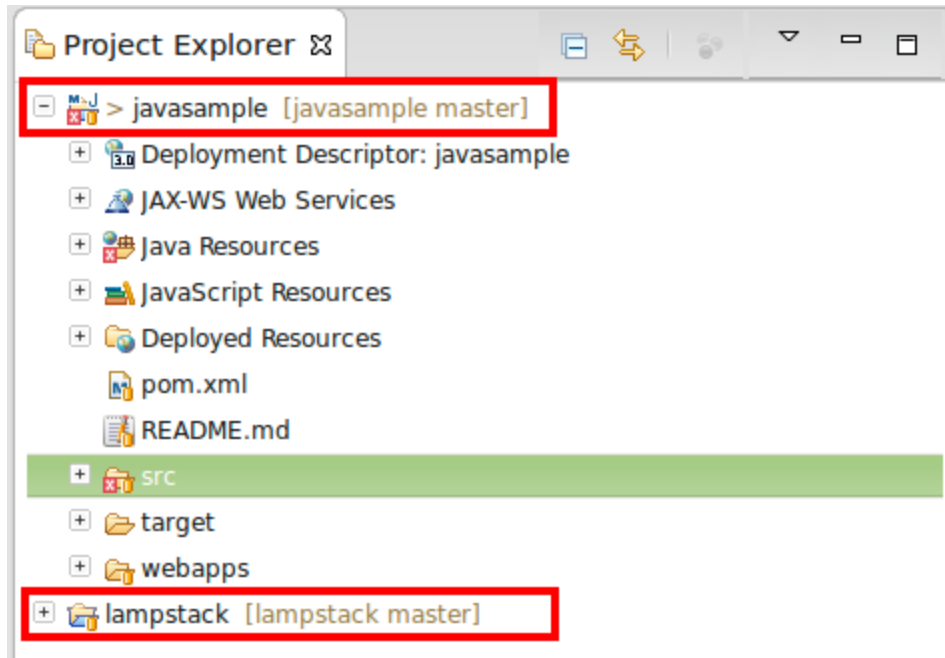
Name:

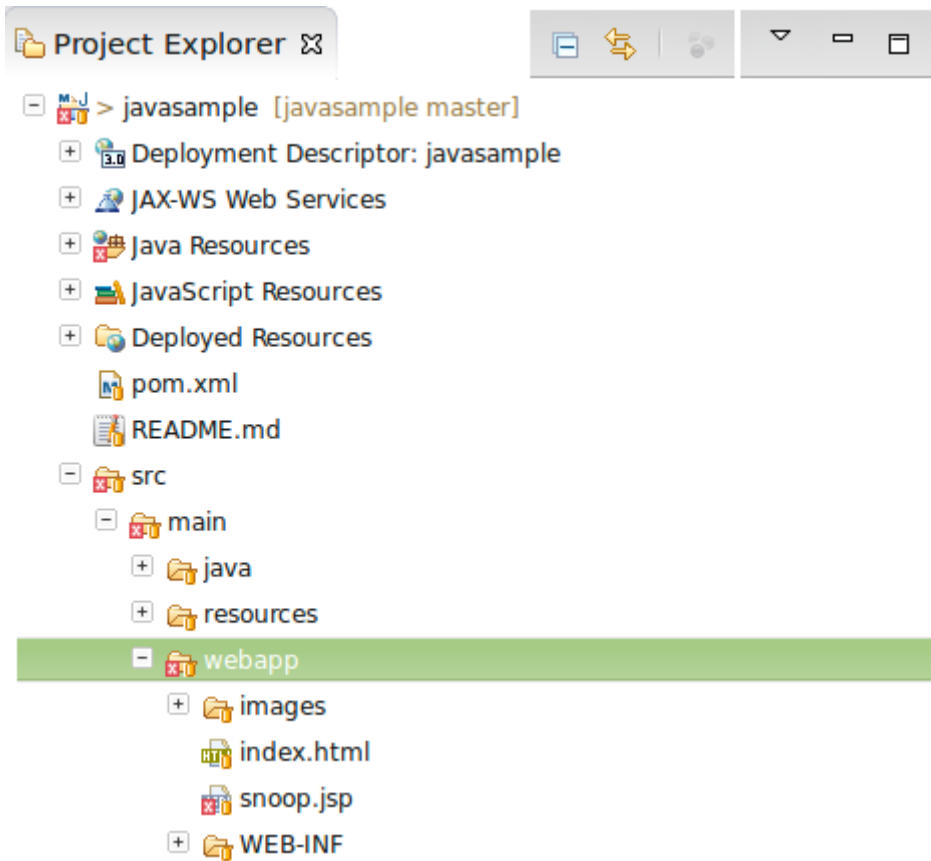
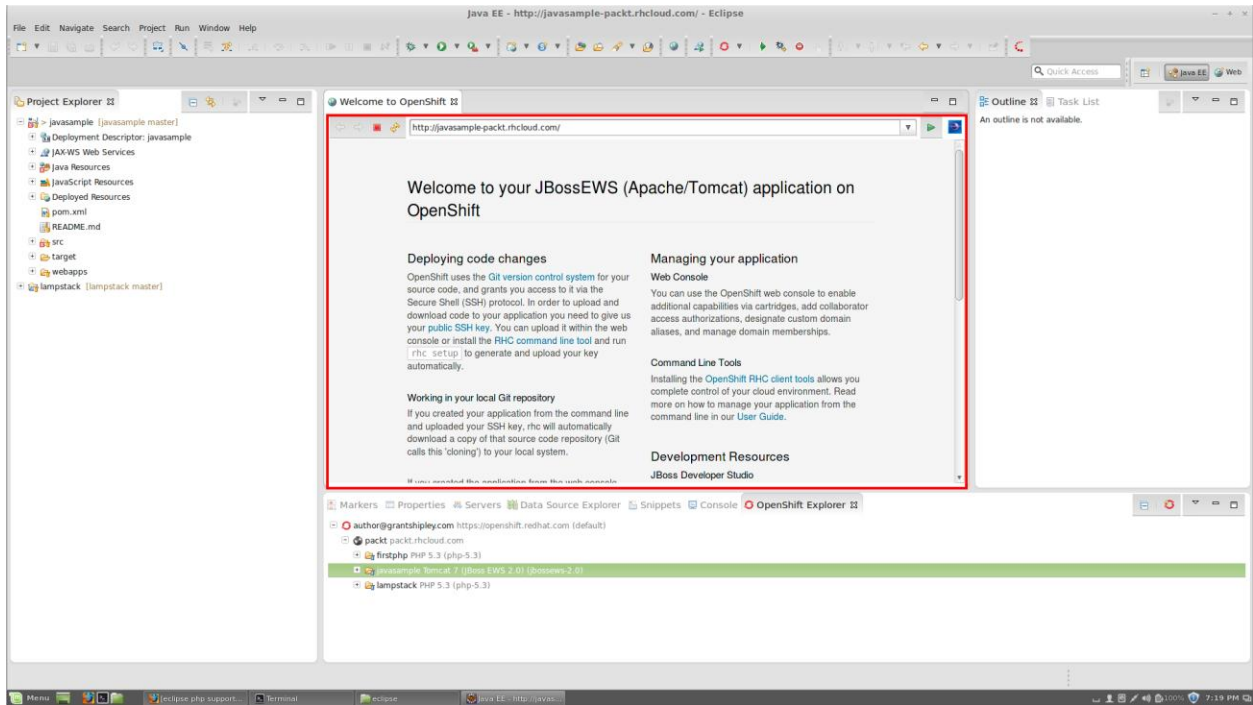
Type:

Gear profile: Enable scaling

Embeddable Cartridges


- 10gen Mongo Monitoring Service Agent (10gen-mms-agent-0)
- Cron 1.4 (cron-1.4)
- Jenkins Client (jenkins-client-1)
- MongoDB 2.2 (mongodb-2.2)
- MySQL 5.1 (mysql-5.1)
- MySQL 5.5 (mysql-5.5)
- OpenShift Metrics 0.1 (metrics-0.1)
- PostgreSQL 8.4 (postgresql-8.4)
- PostgreSQL 9.2 (postgresql-9.2)





Commit Changes

Commit Changes to Git Repository



Commit message

Adding a new source file that will greet the user and display the current system date and time.

Author:

Committer:

Files (1/2)

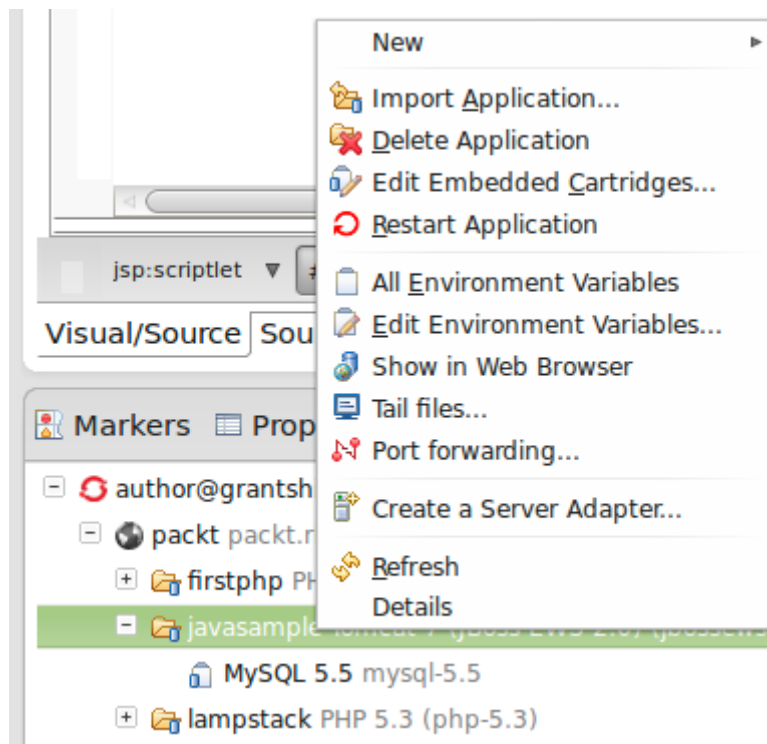
Status	Path
<input type="checkbox"/>	.settings/.jsdtscope
<input checked="" type="checkbox"/>	src/main/webapp/hello.jsp

Commit and Push
Cancel
Commit

Markers Properties Servers Data Source Explorer Snippets Console OpenShift Explorer Palette Git Staging

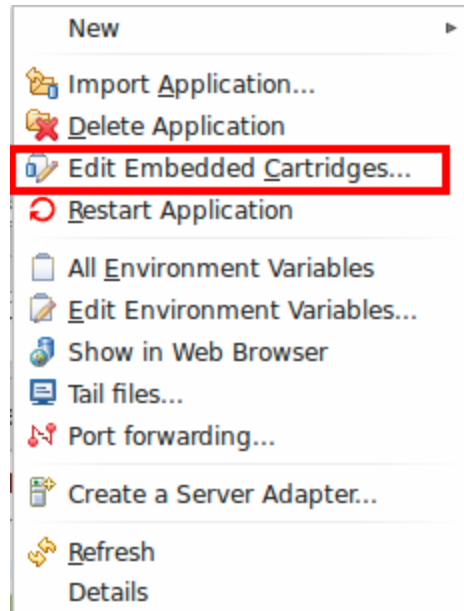
javasample

<p>Unstaged Changes (1)</p> <ul style="list-style-type: none"> .jsdtscope - .settings 	<p>Commit Message</p> <p>Added a : after the date/time is statement.</p> <p>Author: <input type="text" value="gshipley <author@grantshipley.com>"/></p> <p>Committer: <input type="text" value="gshipley <author@grantshipley.com>"/></p>
<p>Staged Changes (1)</p> <ul style="list-style-type: none"> hello.jsp - src/main/webapp 	Commit and Push Commit



```
Markers Properties Servers Data Source Explorer Snippets Console
javasample-packt.rhcloud.com [Tomcat 7 (JBoss EWS 2.0), MySQL 5.5 on gear #53016abce0b8cd13410004]
==> jbossews/logs/catalina.out <==
Feb 16, 2014 10:02:04 PM org.apache.catalina.startup.Catalina start
INFO: Server startup in 32367 ms

==> jbossews/logs/localhost_access_log.2014-02-16.txt <==
127.12.250.1 - - [16/Feb/2014:22:02:18 -0500] "GET /hello.jsp HTTP/1.1" 200 74
127.12.250.1 - - [16/Feb/2014:22:11:06 -0500] "HEAD / HTTP/1.1" 200 -
127.12.250.1 - - [16/Feb/2014:22:11:06 -0500] "HEAD / HTTP/1.1" 200 -
```



Edit Embedded Cartridges

×

Embed Cartridges

Please select the cartridges to embed into your application



OPENSIFT

Embeddable Cartridges

- 10gen Mongo Monitoring Service Agent (10gen-mms-agent-0.1)
- Cron 1.4 (cron-1.4)
- Jenkins Client (jenkins-client-1)
- MongoDB 2.2 (mongodb-2.2)
- MySQL 5.1 (mysql-5.1)
- MySQL 5.5 (mysql-5.5)
- OpenShift Metrics 0.1 (metrics-0.1)
- PostgreSQL 8.4 (postgresql-8.4)
- PostgreSQL 9.2 (postgresql-9.2)
- RockMongo 1.1 (rockmongo-1.1)
- SwitchYard 0.8.0 (switchyard-0)
- Web Load Balancer (haproxy-1.4)
- phpMyAdmin 4.0 (phpmyadmin-4)


Cancel

Finish

Manage Application Environment Variable(s) for application lampstack

Environment Variables

Please provide new environment variables or edit the existing ones




Environment Variables

Name	Value
OPENSIFT_LAMPSTACK_LOGLEVEL	INFO

Add...
Edit...
Remove...
Refresh

Cancel Finish

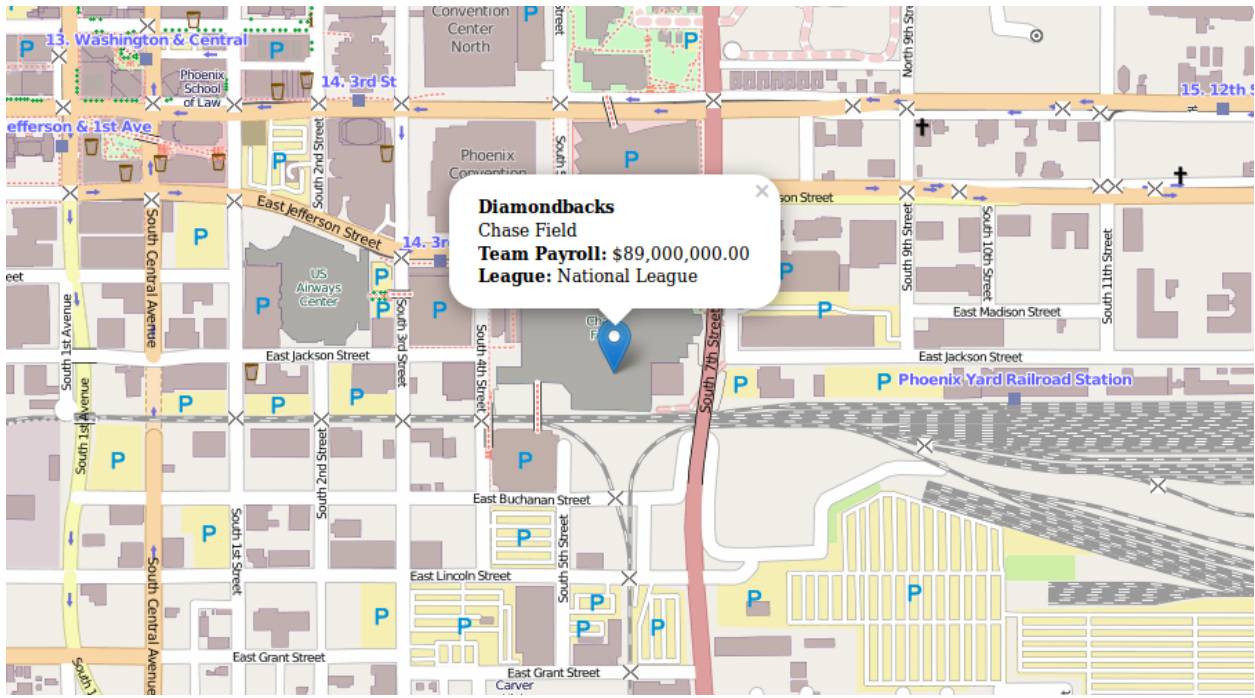
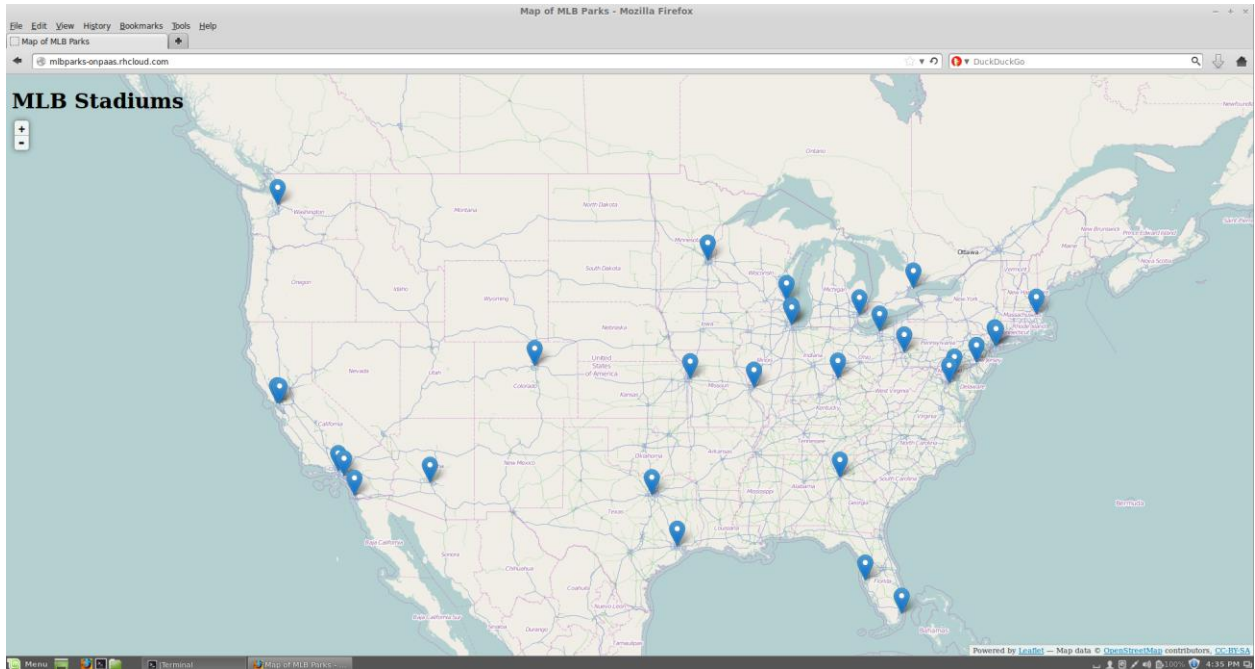
Application deletion



You are about to destroy the "javasample" application.
This is NOT reversible, all remote data for this application will be removed.

Cancel OK

Chapter 5



```
Mozilla Firefox
File Edit View History Bookmarks Tools Help
http://mlbparks...oud.com/ws/parks
mlbparks-packt.rhcloud.com/ws/parks
DuckDuckGo

[{"name":"Diamondbacks","position":[-112.066662,33.444799],"id":"53113e84127b12b099c18a58","ballpark":"Chase Field","payroll":89000000,"league":"National League"},
{"name":"Braves","position":[-84.38839,33.734708],"id":"53113e84127b12b099c18a59","ballpark":"Turner Field","payroll":85000000,"league":"National League"},
{"name":"Orioles","position":[-76.620214,39.284072],"id":"53113e84127b12b099c18a5a","ballpark":"Oriole Park","payroll":92000000,"league":"American League"},{"name":"Red Sox","position":[-71.09817,42.346251],"id":"53113e84127b12b099c18a5b","ballpark":"Fenway Park","payroll":150000000,"league":"American League"},{"name":"White Sox","position":[-87.633788,41.829347],"id":"53113e84127b12b099c18a5c","ballpark":"U.S. Cellular Field","payroll":117000000,"league":"American League"},{"name":"Cubs","position":[-87.633788,41.947384],"id":"53113e84127b12b099c18a5d","ballpark":"Wrigley Field","payroll":103000000,"league":"National League"},{"name":"Indians","position":[-81.685236,41.495966],"id":"53113e84127b12b099c18a5e","ballpark":"Progressive Field","payroll":71000000,"league":"American League"},{"name":"Reds","position":[-84.506965,39.097437],"id":"53113e84127b12b099c18a5f","ballpark":"Great American Ballpark","payroll":107000000,"league":"National League"},{"name":"Tigers","position":[-83.048487,42.338753],"id":"53113e84127b12b099c18a60","ballpark":"Comerica Park","payroll":150000000,"league":"American League"},{"name":"Rockies","position":[-104.994281,39.756436],"id":"53113e84127b12b099c18a61","ballpark":"Coors Field","payroll":73000000,"league":"National League"},{"name":"Astros","position":[-95.357294,29.756816],"id":"53113e84127b12b099c18a62","ballpark":"Minute Maid Park","payroll":32000000,"league":"American League"},{"name":"Dodgers","position":[-118.240974,34.07322],"id":"53113e84127b12b099c18a63","ballpark":"Dodger Stadium","payroll":213000000,"league":"National League"},{"name":"Royals","position":[-94.480619,39.051019],"id":"53113e84127b12b099c18a64","ballpark":"Kauffman Stadium","payroll":78000000,"league":"American League"},{"name":"Marlins","position":[-80.22148,25.778142],"id":"53113e84127b12b099c18a65","ballpark":"Marlins Park","payroll":45000000,"league":"National League"},{"name":"Angels","position":[-117.883043,33.80003],"id":"53113e84127b12b099c18a66","ballpark":"Angel Stadium","payroll":152000000,"league":"American League"},{"name":"Brewers","position":[-87.972043,43.028758],"id":"53113e84127b12b099c18a67","ballpark":"Miller Park","payroll":72000000,"league":"National League"},{"name":"Twins","position":[-93.278282,44.981739],"id":"53113e84127b12b099c18a68","ballpark":"Target Field","payroll":80000000,"league":"American League"},{"name":"Mets","position":[-73.846399,40.756477],"id":"53113e84127b12b099c18a69","ballpark":"Citi Field","payroll":84000000,"league":"National League"},{"name":"Yankees","position":[-73.92842,40.829234],"id":"53113e84127b12b099c18a6a","ballpark":"Yankee Stadium","payroll":210000000,"league":"American League"},{"name":"Phillies","position":[-75.166483,39.905654],"id":"53113e84127b12b099c18a6b","ballpark":"Citizens Bank Park","payroll":158000000,"league":"National League"},{"name":"Athletics","position":[-122.201571,37.751554],"id":"53113e84127b12b099c18a6c","ballpark":"O.co Coliseum","payroll":60000000,"league":"American League"},{"name":"Pirates","position":[-80.009666,40.446947],"id":"53113e84127b12b099c18a6d","ballpark":"PNC Park","payroll":55000000,"league":"National League"},{"name":"Mariners","position":[-122.332635,47.591231],"id":"53113e84127b12b099c18a6e","ballpark":"Safeco Field","payroll":71000000,"league":"American League"},{"name":"Padres","position":[-117.155617,32.705664],"id":"53113e84127b12b099c18a6f","ballpark":"PETCO Park","payroll":65000000,"league":"National League"},{"name":"Rays","position":[-82.65152,27.768507],"id":"53113e84127b12b099c18a70","ballpark":"Tropicana Field","payroll":60000000,"league":"American League"},{"name":"Giants","position":[-122.390871,37.778143],"id":"53113e84127b12b099c18a71","ballpark":"AT&T Park","payroll":137000000,"league":"National League"},{"name":"Rangers","position":[-97.081266,32.749833],"id":"53113e84127b12b099c18a72","ballpark":"Rangers Ballpark in Arlington","payroll":120000000,"league":"American League"},{"name":"Cardinals","position":[-90.19405,38.623978],"id":"53113e84127b12b099c18a73","ballpark":"Busch Stadium","payroll":115000000,"league":"National League"},{"name":"Blue Jays","position":[-79.390611,43.642349],"id":"53113e84127b12b099c18a74","ballpark":"Rogers Stadium","payroll":115000000,"league":"American League"},{"name":"Nationals","position":[-77.007283,38.873068],"id":"53113e84127b12b099c18a75","ballpark":"Nationals Park","payroll":113000000,"league":"National League"}]
```


Welcome to OpenShift - Mozilla Firefox

Welcome to OpenShift

mlbparks-packt.rhcloud.com

Welcome to your JBoss EAP application on OpenShift

Deploying code changes

OpenShift uses the [Git version control system](#) for your source code, and grants you access to it via the Secure Shell (SSH) protocol. In order to upload and download code to your application you need to give us your [public SSH key](#). You can upload it within the web console or install the [RHC command line tool](#) and run `rhc setup` to generate and upload your key automatically.

Working in your local Git repository

If you created your application from the command line and uploaded your SSH key, rhc will automatically download a copy of that source code repository (Git calls this 'cloning') to your local system.

If you created the application from the web console, you'll need to manually clone the repository to your local system. Copy the application's source code Git URL and then run:

```
$ git clone <git_url> <directory_to_create>

# Within your project directory
# Commit your changes and push to OpenShift

$ git commit -a -m 'Some commit message'
$ git push
```

- [Learn more about deploying and building your application](#)
- See the README file in your local application Git repository for more information on the options for deploying applications.

Managing your application

Web Console

You can use the OpenShift web console to enable additional capabilities via cartridges, add collaborator access authorizations, designate custom domain aliases, and manage domain memberships.

Command Line Tools

Installing the [OpenShift RHC client tools](#) allows you complete control of your cloud environment. Read more on how to manage your application from the command line in our [User Guide](#).

Development Resources

JBoss Developer Studio

The JBoss Developer Studio is a full featured IDE with OpenShift integration built in. It gives you the ability to create, edit and deploy applications without having to leave the IDE. Links to download, install and use the JBoss Developer Studio for Linux, Mac OS X, or Windows can be found on the [JBoss Developer Studio tools page](#).

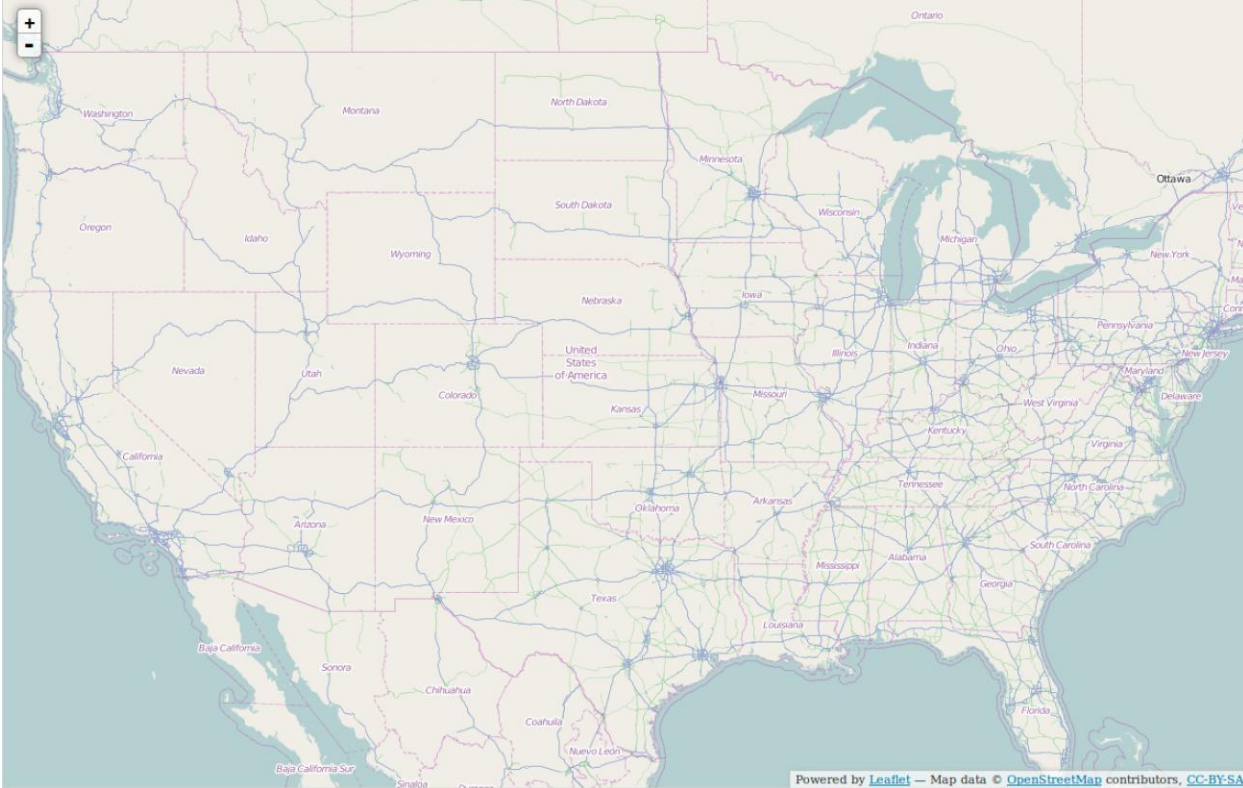
Debugging

[View debugging information](#) about the server environment including memory pools.

- [Developer Center](#)
- [User Guide](#)
- [OpenShift Support](#)
- [Stack Overflow questions for OpenShift](#)
- [IRC channel at #openshift on freenode.net](#)
- [Git documentation](#)

Sample Applications

MLB Stadiums



Carrier

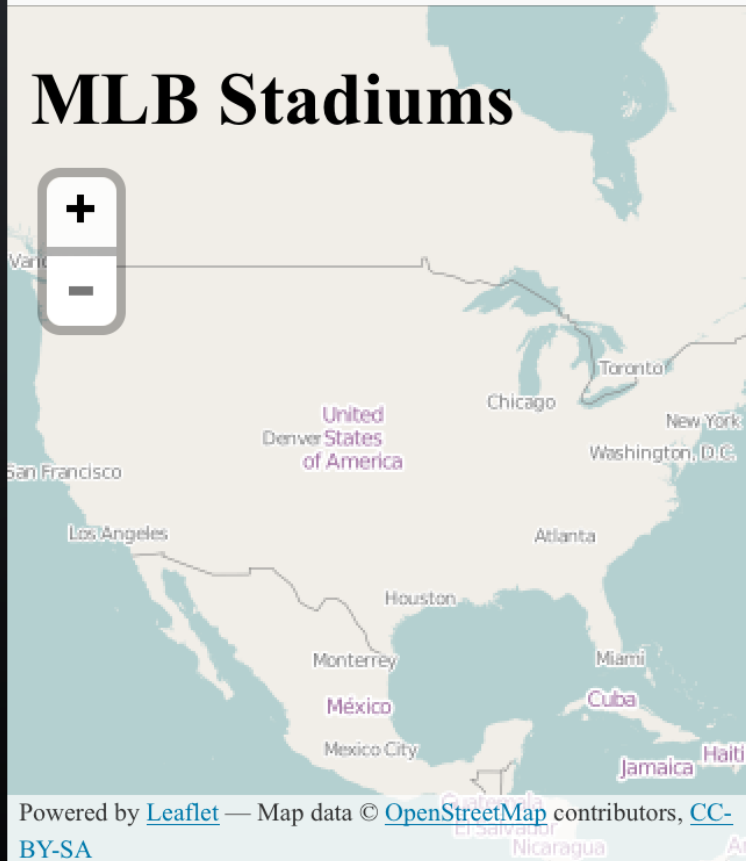
3:40 PM



mlbparks-packt.rhcloud.com



MLB Stadiums

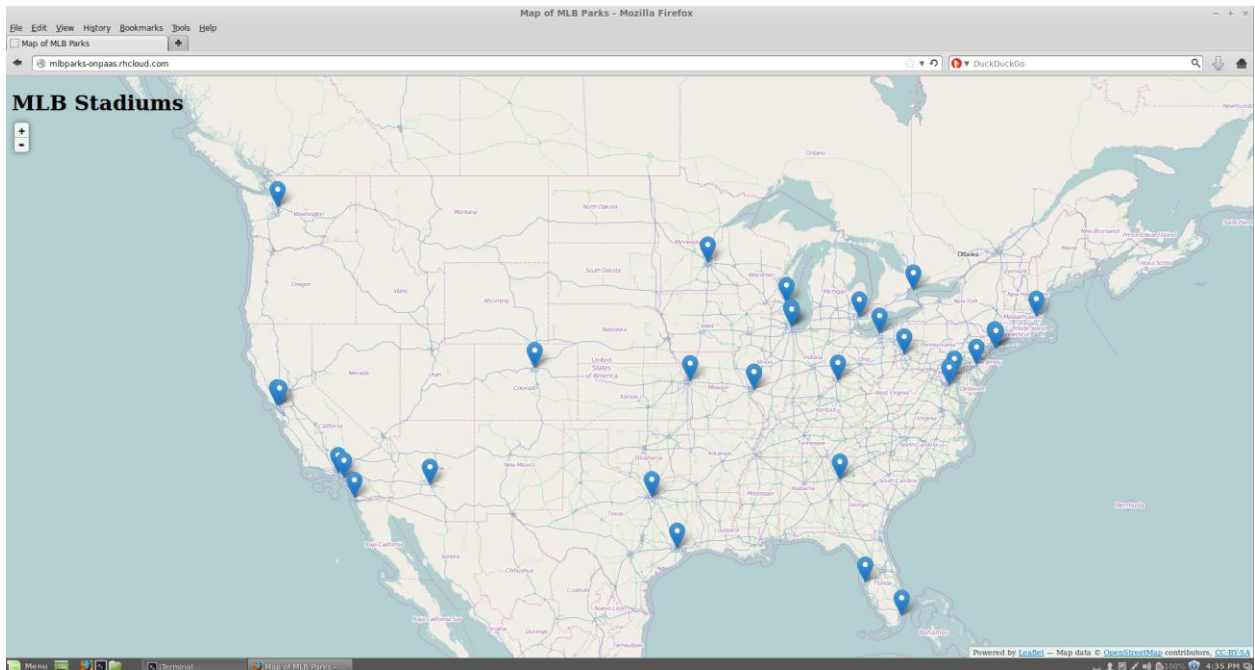


Powered by [Leaflet](#) — Map data © [OpenStreetMap](#) contributors, [CC-BY-SA](#)





Chapter 6



```
Mozilla Firefox
http://springmlb-...com/api/v1/parks
springmlb-packt.rhcloud.com/api/v1/parks
DuckDuckGo

[{"id":"53335028f15bab219244e442","name":"Diamondbacks","position":null,"ballpark":"Chase Field","payroll":89000000,"league":"National League"},
{"id":"53335028f15bab219244e443","name":"Braves","position":null,"ballpark":"Turner Field","payroll":85000000,"league":"National League"},
{"id":"53335028f15bab219244e444","name":"Orioles","position":null,"ballpark":"Oriole Park","payroll":92000000,"league":"American League"},
{"id":"53335028f15bab219244e445","name":"Red Sox","position":null,"ballpark":"Fenway Park","payroll":150000000,"league":"American League"},
{"id":"53335028f15bab219244e446","name":"White Sox","position":null,"ballpark":"U.S. Cellular Field","payroll":117000000,"league":"American League"},
{"id":"53335028f15bab219244e447","name":"Cubs","position":null,"ballpark":"Wrigley Field","payroll":103000000,"league":"National League"},
{"id":"53335028f15bab219244e448","name":"Indians","position":null,"ballpark":"Progressive Field","payroll":71000000,"league":"American League"},
{"id":"53335028f15bab219244e449","name":"Reds","position":null,"ballpark":"Great American Ballpark","payroll":107000000,"league":"National League"},
{"id":"53335028f15bab219244e44a","name":"Tigers","position":null,"ballpark":"Comerica Park","payroll":150000000,"league":"American League"},
{"id":"53335028f15bab219244e44b","name":"Rockies","position":null,"ballpark":"Coors Field","payroll":73000000,"league":"National League"},
{"id":"53335028f15bab219244e44c","name":"Astros","position":null,"ballpark":"Minute Maid Park","payroll":32000000,"league":"American League"},
{"id":"53335028f15bab219244e44d","name":"Dodgers","position":null,"ballpark":"Dodger Stadium","payroll":213000000,"league":"National League"},
{"id":"53335028f15bab219244e44e","name":"Royals","position":null,"ballpark":"Kauffman Stadium","payroll":78000000,"league":"American League"},
{"id":"53335028f15bab219244e44f","name":"Marlins","position":null,"ballpark":"Marlins Park","payroll":45000000,"league":"National League"},
{"id":"53335028f15bab219244e450","name":"Angels","position":null,"ballpark":"Angel Stadium","payroll":152000000,"league":"American League"},
{"id":"53335028f15bab219244e451","name":"Brewers","position":null,"ballpark":"Miller Park","payroll":72000000,"league":"National League"},
{"id":"53335028f15bab219244e452","name":"Twins","position":null,"ballpark":"Target Field","payroll":80000000,"league":"American League"},
{"id":"53335028f15bab219244e453","name":"Mets","position":null,"ballpark":"Citi Field","payroll":84000000,"league":"National League"},
{"id":"53335028f15bab219244e454","name":"Yankees","position":null,"ballpark":"Yankee Stadium","payroll":210000000,"league":"American League"},
{"id":"53335028f15bab219244e455","name":"Phillies","position":null,"ballpark":"Citizens Bank Park","payroll":158000000,"league":"National League"},
{"id":"53335028f15bab219244e456","name":"Athletics","position":null,"ballpark":"O.co Coliseum","payroll":60000000,"league":"American League"},
{"id":"53335028f15bab219244e457","name":"Pirates","position":null,"ballpark":"PNC Park","payroll":55000000,"league":"National League"},
{"id":"53335028f15bab219244e458","name":"Mariners","position":null,"ballpark":"Safeco Field","payroll":100000000,"league":"American League"},
{"id":"53335028f15bab219244e459","name":"Padres","position":null,"ballpark":"PETCO Park","payroll":65000000,"league":"National League"},
{"id":"53335028f15bab219244e45a","name":"Rays","position":null,"ballpark":"Tropicana Field","payroll":60000000,"league":"American League"},
{"id":"53335028f15bab219244e45b","name":"Giants","position":null,"ballpark":"AT&T Park","payroll":137000000,"league":"National League"},
{"id":"53335028f15bab219244e45c","name":"Rangers","position":null,"ballpark":"Rangers Ballpark in Arlington","payroll":120000000,"league":"American League"},
{"id":"53335028f15bab219244e45d","name":"Cardinals","position":null,"ballpark":"Busch Stadium","payroll":115000000,"league":"National League"},
{"id":"53335028f15bab219244e45e","name":"Blue Jays","position":null,"ballpark":"Rogers Stadium","payroll":115000000,"league":"American League"},
{"id":"53335028f15bab219244e45f","name":"Nationals","position":null,"ballpark":"Nationals Park","payroll":113000000,"league":"National League"}]
```

Welcome to OpenShift - Mozilla Firefox

springmlb-packt.rhcloud.com

Welcome to your JBossEWS (Apache/Tomcat) application on OpenShift

Deploying code changes

OpenShift uses the [Git version control system](#) for your source code, and grants you access to it via the Secure Shell (SSH) protocol. In order to upload and download code to your application you need to give us your [public SSH key](#). You can upload it within the web console or install the [RHC command line tool](#) and run `rhc setup` to generate and upload your key automatically.

Working in your local Git repository

If you created your application from the command line and uploaded your SSH key, rhc will automatically download a copy of that source code repository (Git calls this 'cloning') to your local system.

If you created the application from the web console, you'll need to manually clone the repository to your local system. Copy the application's source code Git URL and then run:

```
$ git clone <git_url> <directory_to_create>

# Within your project directory
# Commit your changes and push to OpenShift

$ git commit -a -m 'Some commit message'
$ git push
```

- [Learn more about deploying and building your application](#)
- See the README file in your local application Git repository for more information on the options for deploying applications.

Managing your application

Web Console

You can use the OpenShift web console to enable additional capabilities via cartridges, add collaborator access authorizations, designate custom domain aliases, and manage domain memberships.

Command Line Tools

Installing the [OpenShift RHC client tools](#) allows you complete control of your cloud environment. Read more on how to manage your application from the command line in our [User Guide](#).

Development Resources

JBoss Developer Studio


The JBoss Developer Studio is a full featured IDE with OpenShift integration built in. It gives you the ability to create, edit and deploy applications without having to leave the IDE. Links to download, install and use the JBoss Developer Studio for Linux, Mac OS X, or Windows can be found on the [JBoss Developer Studio tools page](#).

Debugging

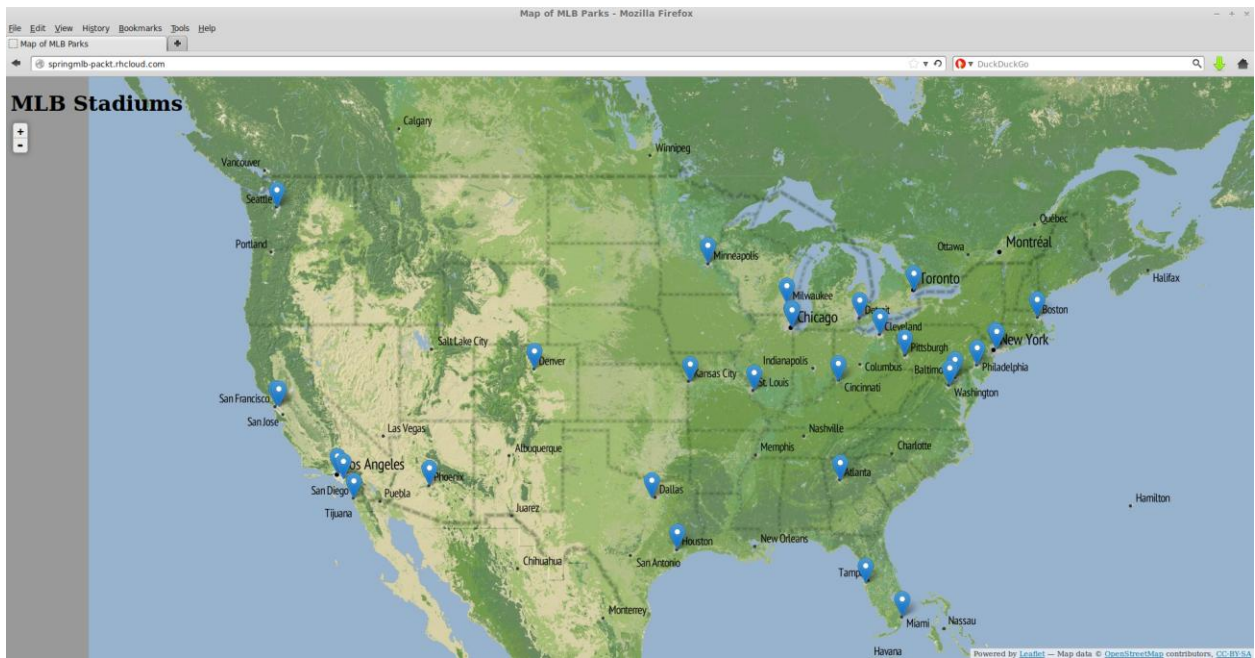
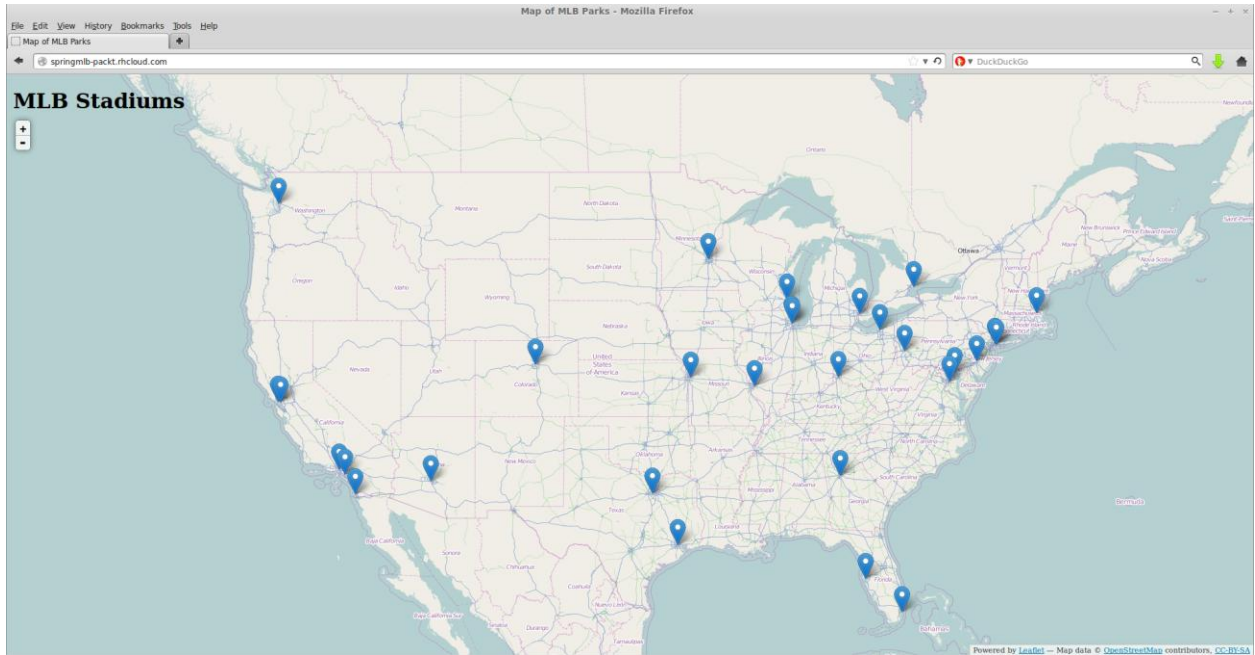
[View debugging information](#) about the server environment including memory pools.

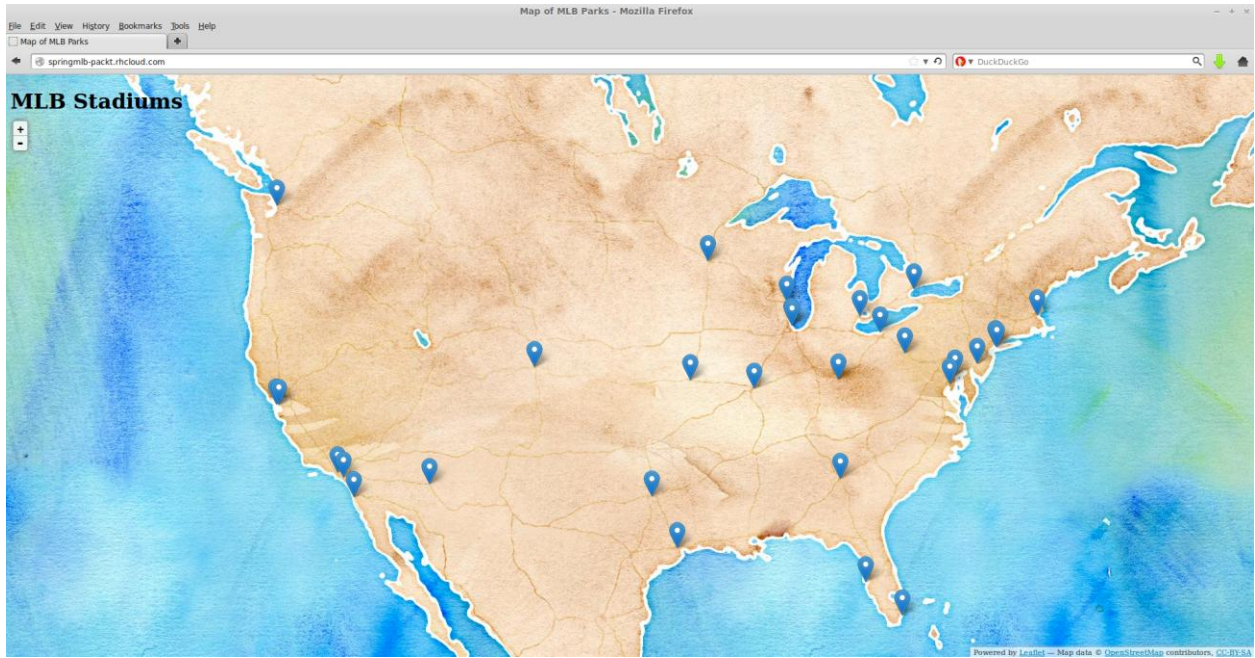
- [Developer Center](#)
- [User Guide](#)
- [OpenShift Support](#)
- [Stack Overflow questions for OpenShift](#)
- [IRC channel at #openshift on freenode.net](#)
- [Git documentation](#)

Built on

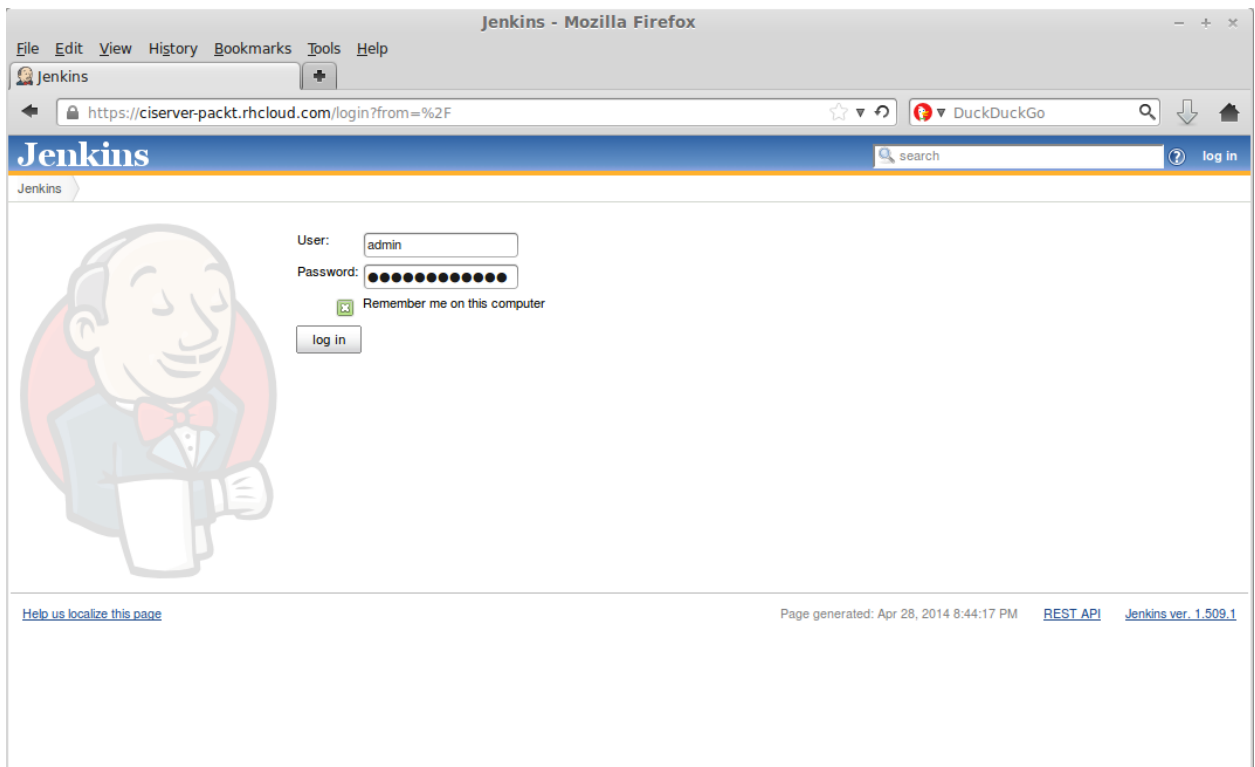


OPENSHIFT
by Red Hat





Chapter 7



Dashboard [Jenkins] - Mozilla Firefox

File Edit View History Bookmarks Tools Help

Dashboard [Jenkins]

https://ciserver-packt.rhcloud.com

DuckDuckGo

Jenkins

search admin | log out

Jenkins

ENABLE AUTO REFRESH

[add description](#)

[New Job](#)

Welcome to Jenkins! Please [create new jobs](#) to get started.

[People](#)

[Build History](#)

[Manage Jenkins](#)

[My Views](#)

Build Queue

No builds in the queue.

[Build Executor Status](#)

[Help us localize this page](#)

Page generated: Apr 28, 2014 8:48:17 PM [REST API](#) [Jenkins ver. 1.509.1](#)

Dashboard [Jenkins] - Mozilla Firefox

File Edit View History Bookmarks Tools Help

Dashboard [Jenkins]

https://ciserver-packt.rhcloud.com

DuckDuckGo

Jenkins

search admin | log out

Jenkins

ENABLE AUTO REFRESH

[add description](#)

[New Job](#)

[People](#)

[Build History](#)

[Manage Jenkins](#)

[My Views](#)

Build Queue

No builds in the queue.

[Build Executor Status](#)

S	W	Name ↓	Last Success	Last Failure	Last Duration
		mlbparks-build	N/A	N/A	N/A

Icon: [S](#) [M](#) [L](#)

[Legend](#) [RSS for all](#) [RSS for failures](#) [RSS for just latest builds](#)

[Help us localize this page](#)

Page generated: Apr 28, 2014 9:05:43 PM [REST API](#) [Jenkins ver. 1.509.1](#)

[Back to Dashboard](#)
Project mlbparks-build

- [Status](#)
- [Changes](#)
- [Workspace](#)
- [Build Now](#)
- [Delete Project](#)
- [Configure](#)

- [Workspace](#)
- [Recent Changes](#)

[add description](#)
Disable Project

Build History (trend)
[RSS for all](#) [RSS for failures](#)

Permalinks

Application UUID	<input type="text" value="5311180f500446f54a0003bb"/>
Builder Size	<input type="text" value="small"/> ?
Builder Timeout	<input type="text" value="300000"/> ?
Builder Type	<input type="text" value="redhat-jbosseap-6"/> ?

Source Code Management

CVS

Git

Repositories

URL of repository ?

Advanced...

Delete Repository

Add

Branches to build

Branch Specifier (blank for default): ?

Delete Branch

Add

Advanced...

Repository browser

?

None

Subversion

Build

Execute shell

```
Command source $OPENSIFT_CARTRIDGE_SDK_BASH

alias rsync="rsync --delete-after -az -e '$GIT_SSH'"

upstream_ssh="5311180f500446f54a0003bb@mlbparks-${OPENSIFT_NAMESPACE}.rhcloud.com"

# remove previous metadata, if any
rm -f $OPENSIFT_HOMEDIR/app-deployments/current/metadata.json

if ! marker_present "force_clean_build"; then
  # don't fail if these rsyncs fail
  set +e
  rsync $upstream_ssh:$OPENSIFT_BUILD_DEPENDENCIES_DIR
$OPENSIFT_BUILD_DEPENDENCIES_DIR
  rsync $upstream_ssh:$OPENSIFT_DEPENDENCIES_DIR $OPENSIFT_DEPENDENCIES_DIR
  set -e
fi

# Build/update libs and run user pre_build and build
gear build

# Run tests here

# Deploy new build

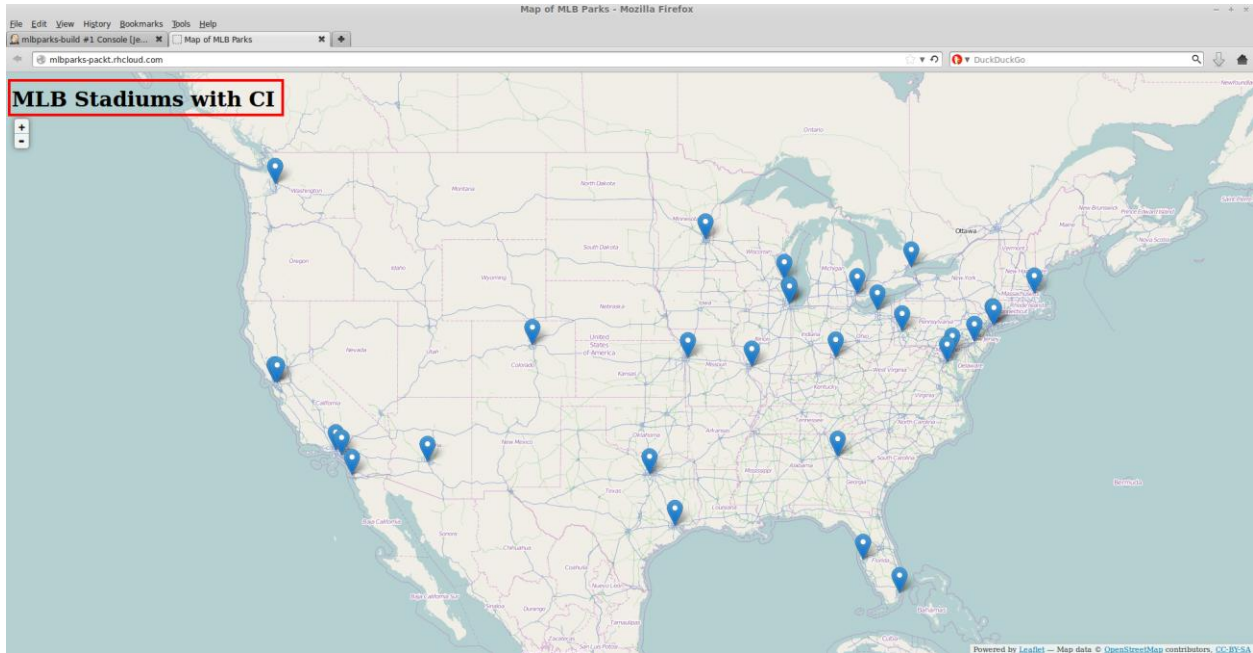
# Stop app
$GIT_SSH $upstream_ssh "gear stop --conditional --exclude-web-proxy --git-ref
$GIT_COMMIT"

deployment_dir=`$GIT_SSH $upstream_ssh 'gear create-deployment-dir'`

# Push content back to application
rsync $OPENSIFT_HOMEDIR/app-deployments/current/metadata.json $upstream_ssh:app-
deployments/$deployment_dir/metadata.json
rsync --exclude .git $WORKSPACE/ $upstream_ssh:app-root/runtime/repo/
rsync $OPENSIFT_BUILD_DEPENDENCIES_DIR $upstream_ssh:app-root/runtime/build-
dependencies/
rsync $OPENSIFT_DEPENDENCIES_DIR $upstream_ssh:app-root/runtime/dependencies/

# Configure / start app
$GIT_SSH $upstream_ssh "gear remotedeploy --deployment-datetime $deployment_dir"
```

See [the list of available environment variables](#)



mlbparks-build [Jenkins] - Mozilla Firefox

File Edit View History Bookmarks Tools Help

mlbparks-build [Jenkins] x Map of MLB Parks x +

https://ciserver-packt.rhcloud.com/job/mlbparks-build/ DuckDuckGo

Jenkins search admin | log out

Jenkins > mlbparks-build [ENABLE AUTO REFRESH](#)

[Back to Dashboard](#)

[Status](#)

[Changes](#)

[Workspace](#)

[Build Now](#)

[Delete Project](#)

[Configure](#)

Build History (trend)

#1 Apr 28, 2014 9:37:31 PM

[RSS for all](#) [RSS for failures](#)

Project mlbparks-build

[add description](#)

[Disable Project](#)

[Workspace](#)

Last Successful Artifacts

.gitkeep	0 B
ROOT.war	362.70 KB

[Recent Changes](#)

Permalinks

- [Last build \(#1\), 22 min ago](#)
- [Last stable build \(#1\), 22 min ago](#)
- [Last successful build \(#1\), 22 min ago](#)

Build History (trend)

#1 Apr 28, 2014 9:37:31 PM

RSS for all RSS for failures

mlbparks-build #1 Console [Jenkins] - Mozilla Firefox

File Edit View History Bookmarks Tools Help

mlbparks-build #1 Console [Jenkins]

https://ciserver-packt.rhcloud.com/job/mlbparks-build/1/console

Jenkins mlbparks-build #1

Back to Project

Status

Changes

Console Output

View as plain text

Edit Build Information

Git Build Data

Progress:

Console Output

```

Started by user Jenkins System Builder
Building remotely on mlbparksbldr in workspace /var/lib/openshift/535f01f5e0b8cdf1b600010c/app-root
/runtime/repo
Checkout:repo / /var/lib/openshift/535f01f5e0b8cdf1b600010c/app-root/runtime/repo -
hudson.remoting.Channel@1b18cda:mlbparksbldr
Using strategy: Default
Checkout:repo / /var/lib/openshift/535f01f5e0b8cdf1b600010c/app-root/runtime/repo -
hudson.remoting.LocalChannel@1fcd3ae
Wiping out workspace first.
Cloning the remote Git repository
Cloning repository origin
Fetching upstream changes from ssh://5311180f500446f54a0003bb@mlbparks-packt.rhcloud.com/~/.git
/mlbparks.git
Seen branch in repository origin/HEAD
Seen branch in repository origin/master
Commencing build of Revision d6d9ae9c5efb120ee974ece5c218329a31099284 (origin/HEAD, origin/master)
Checking out Revision d6d9ae9c5efb120ee974ece5c218329a31099284 (origin/HEAD, origin/master)
No change to record in branch origin/HEAD
No change to record in branch origin/master
[repo] $ /bin/sh -xe /tmp/hudson7290974363620184392.sh
+ source /usr/lib/openshift/cartridge_sdk/bash/sdk
++ '[' false == true ']'
++ 00 BASH_SDK=true
+ alias 'rsync=rsync --delete-after -az -e '\'/usr/libexec/openshift/cartridges/jenkins
/bin/git_ssh_wrapper.sh\'
+ upstream_ssh=5311180f500446f54a0003bb@mlbparks-packt.rhcloud.com
+ rm -f /var/lib/openshift/535f01f5e0b8cdf1b600010c/app-deployments/current/metadata.json
+ marker_present force_clean_build
+ '[' -f /var/lib/openshift/535f01f5e0b8cdf1b600010c/app-root/runtime/repo/.openshift/markers
/force_clean_build ']'
+ set +e
+ rsync --delete-after -az -e /usr/libexec/openshift/cartridges/jenkins/bin/git_ssh_wrapper.sh
'5311180f500446f54a0003bb@mlbparks-packt.rhcloud.com:$OPENSHIFT_BUILD_DEPENDENCIES_DIR' /var/lib
/openshift/535f01f5e0b8cdf1b600010c/app-root/runtime/build-dependencies/
+ rsync --delete-after -az -e /usr/libexec/openshift/cartridges/jenkins/bin/git_ssh_wrapper.sh
'5311180f500446f54a0003bb@mlbparks-packt.rhcloud.com:$OPENSHIFT_DEPENDENCIES_DIR' /var/lib/openshift
/535f01f5e0b8cdf1b600010c/app-root/runtime/dependencies/
+ set -e
+ gear build
Building git ref 'origin/HEAD', commit d6d9ae9
Building jbosseap cartridge
Found pom.xml... attempting to build with 'mvn -e clean package -Popenshift -DskipTests'
Apache Maven 3.0.3 (r1075437; 2011-06-20 13:22:37-0400)
Maven home: /etc/alternatives/maven-3.0
Java version: 1.7.0_55, vendor: Oracle Corporation
Java home: /usr/lib/jvm/java-1.7.0-openjdk-1.7.0.55/jre
Default locale: en_US, platform encoding: ANSI_X3.4-1968
OS name: "linux", version: "2.6.32-431.11.2.el6.bz844450.x86_64", arch: "i386", family: "unix"
[INFO] Scanning for projects...
[INFO]
[INFO] -----
[INFO] Building mlbparks 1.0
[INFO] -----

```

Help us localize this page

Page generated: Apr 28, 2014 9:38:45 PM REST API Jenkins ver. 1.509.1

Applications | OpenShift Online by Red Hat - Mozilla Firefox

File Edit View History Bookmarks Tools Help

Applications | OpenShift Online by...

https://openshift.redhat.com/app/console/applications

OPENSHT ONLINE author@grantshipley.com

Applications Settings Help

Applications 2 of 16

Available in domain **packt**

ciserver Jenkins Server	1
mlbparks JBoss Enterprise Application Platform 6, MongoDB 2.4, Jenkins Client	1

[Add Application...](#)

You may want to...

- Use an empty domain
 - packtdev
 - See all domains**
- Use your own domain name
- Create a scalable application

From the command line

The `rhc` client lets you:

- Access logs
- Save and restore backups
- Connect directly to internal services

Domains | OpenShift Online by Red Hat - Mozilla Firefox

File Edit View History Bookmarks Tools Help

Domains | OpenShift Online by Re...

https://openshift.redhat.com/app/console/domains

OPENSHT ONLINE author@grantshipley.com

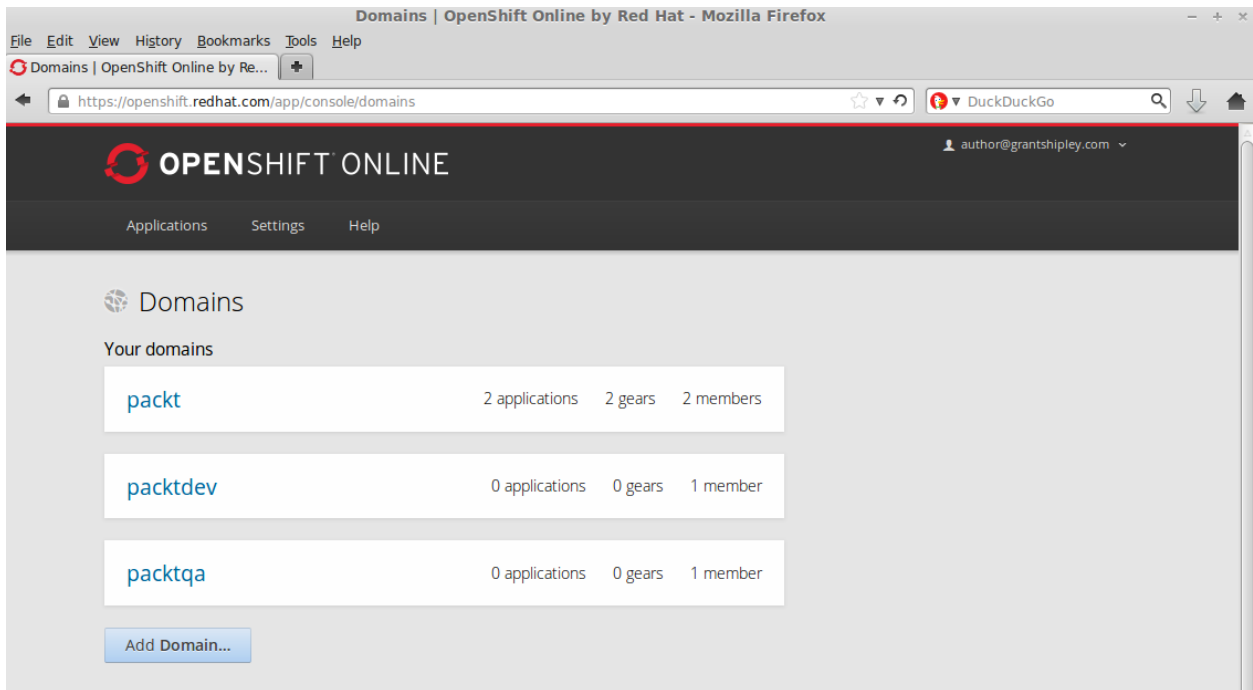
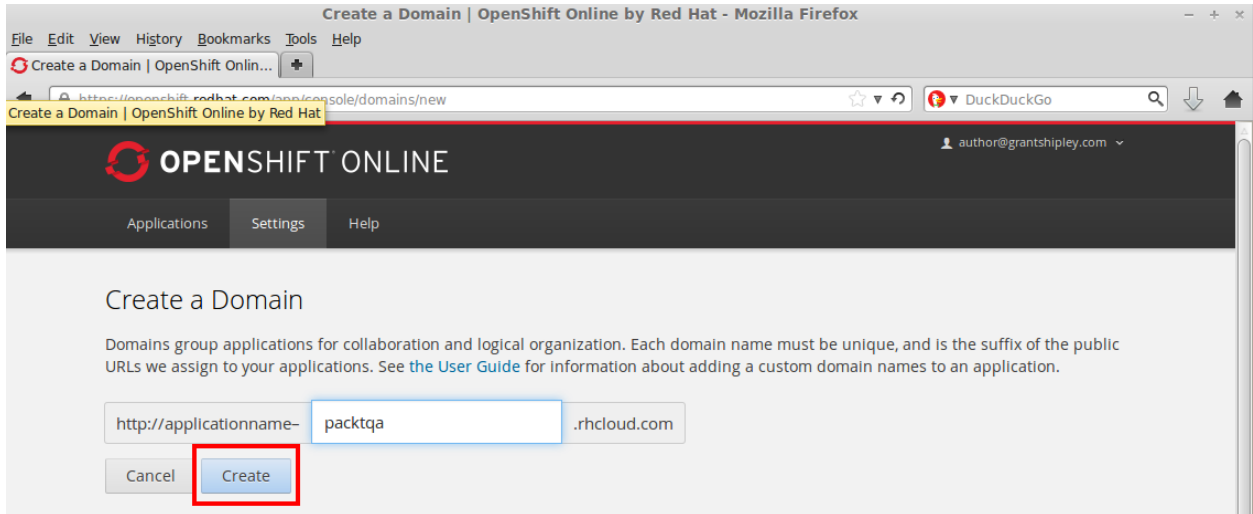
Applications Settings Help

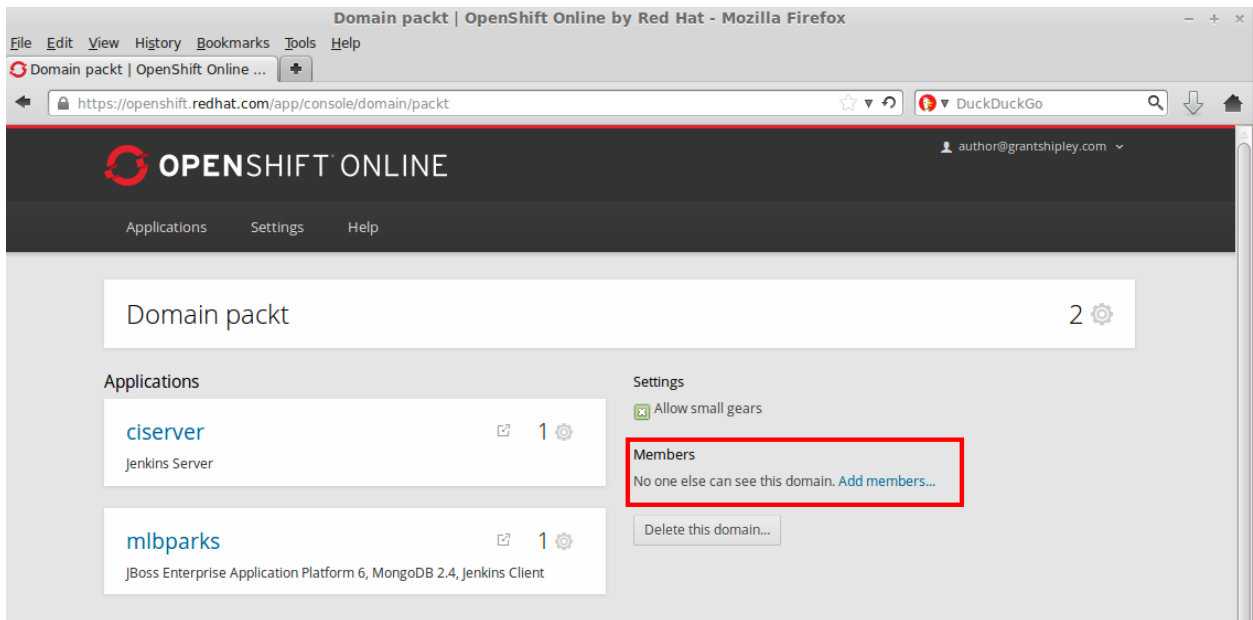
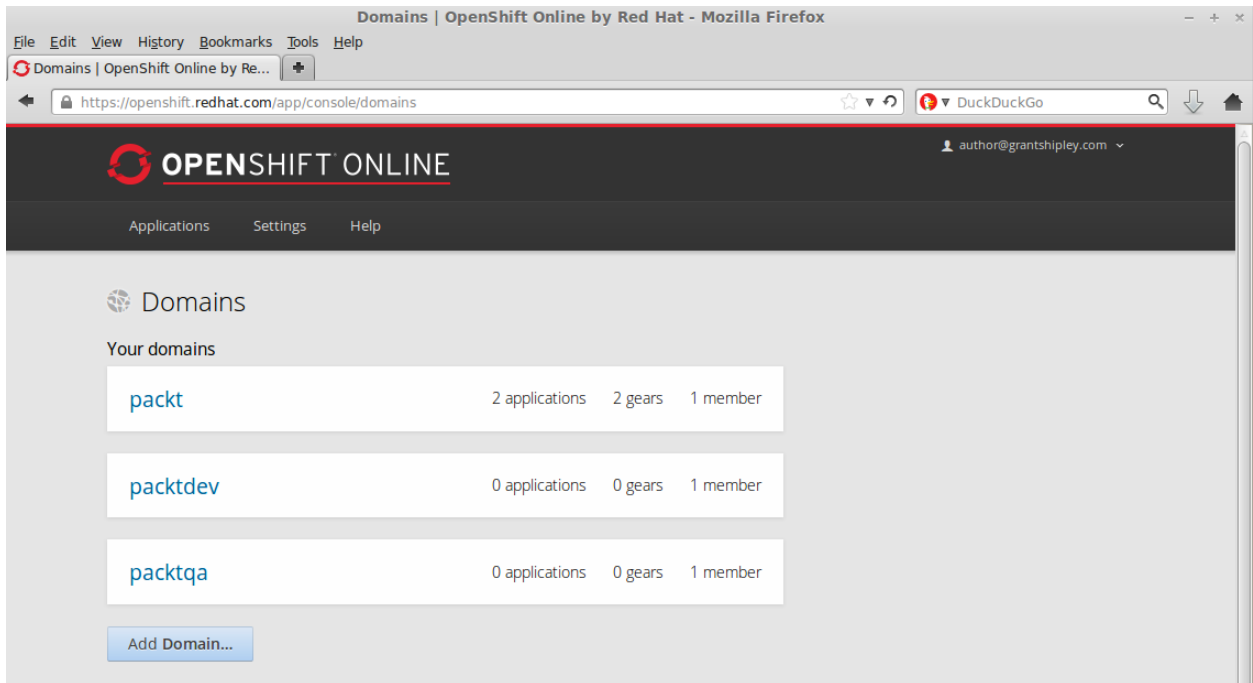
Domains

Your domains

packt	2 applications	2 gears	2 members
packtdev	0 applications	0 gears	1 member

[Add Domain...](#)





Domain packt | OpenShift Online by Red Hat - Mozilla Firefox

File Edit View History Bookmarks Tools Help

Domain packt | OpenShift Online ...

https://openshift.redhat.com/app/console/domain/packt

author@grantshiple.com

OPENSIFT ONLINE

Applications Settings Help

Domain packt 2

Applications

- ciserver** (Jenkins Server) 1
- mlbparks** (JBoss Enterprise Application Platform 6, MongoDB 2.4, Jenkins Client) 1

Settings

- Allow small gears

Members

author@grantshiple.com	Owner
author+dev@grantshiple.cc	Can edit

[Add a user...](#)

What can members do?

- View** - Read-only access to the domain and its applications.
- Edit** - Add, edit, control and delete applications in the domain, including SSH and Git access
- Administer** - Everything except change allowed gear sizes and the domain name.

Domain packt | OpenShift Online by Red Hat - Mozilla Firefox

File Edit View History Bookmarks Tools Help

Domain packt | OpenShift Online ...

https://openshift.redhat.com/app/console/domain/packt

author@grantshiple.com

OPENSIFT ONLINE

Applications Settings Help

Domain packt 2

Added 1 member.

Applications

- ciserver** (Jenkins Server) 1
- mlbparks** (JBoss Enterprise Application Platform 6, MongoDB 2.4, Jenkins Client) 1

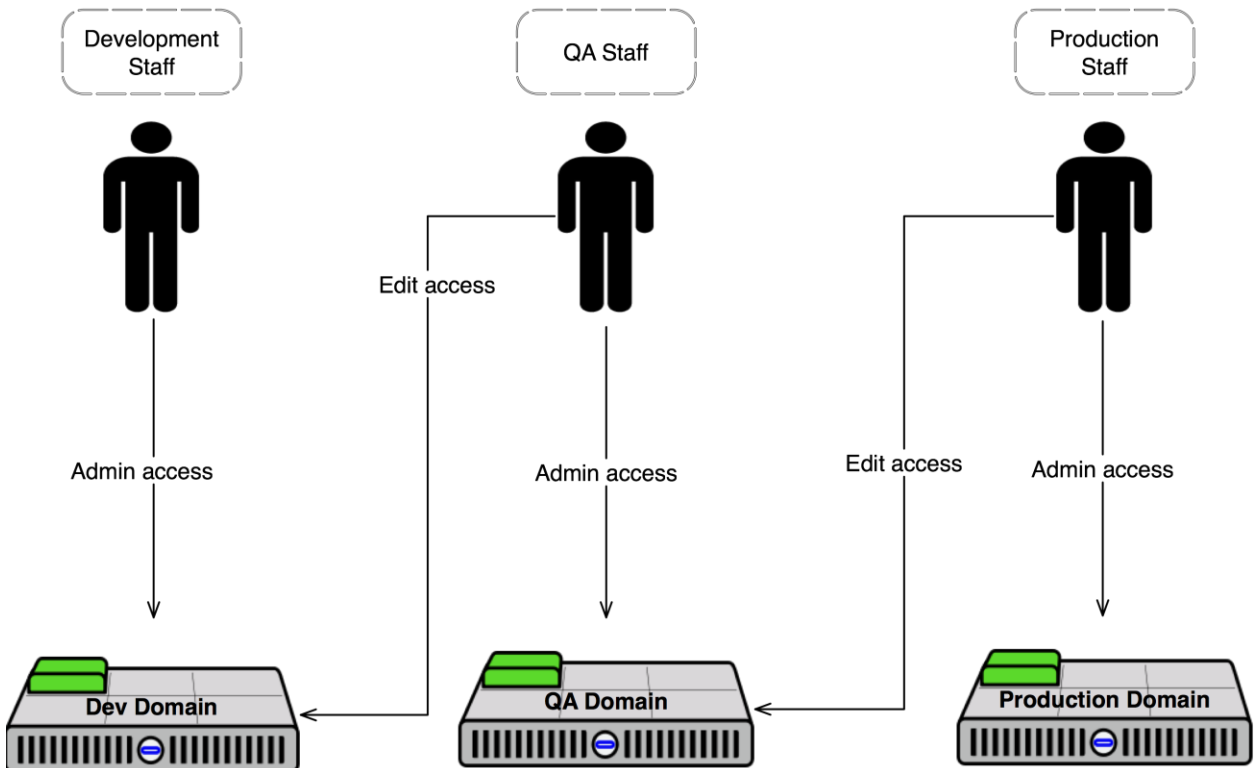
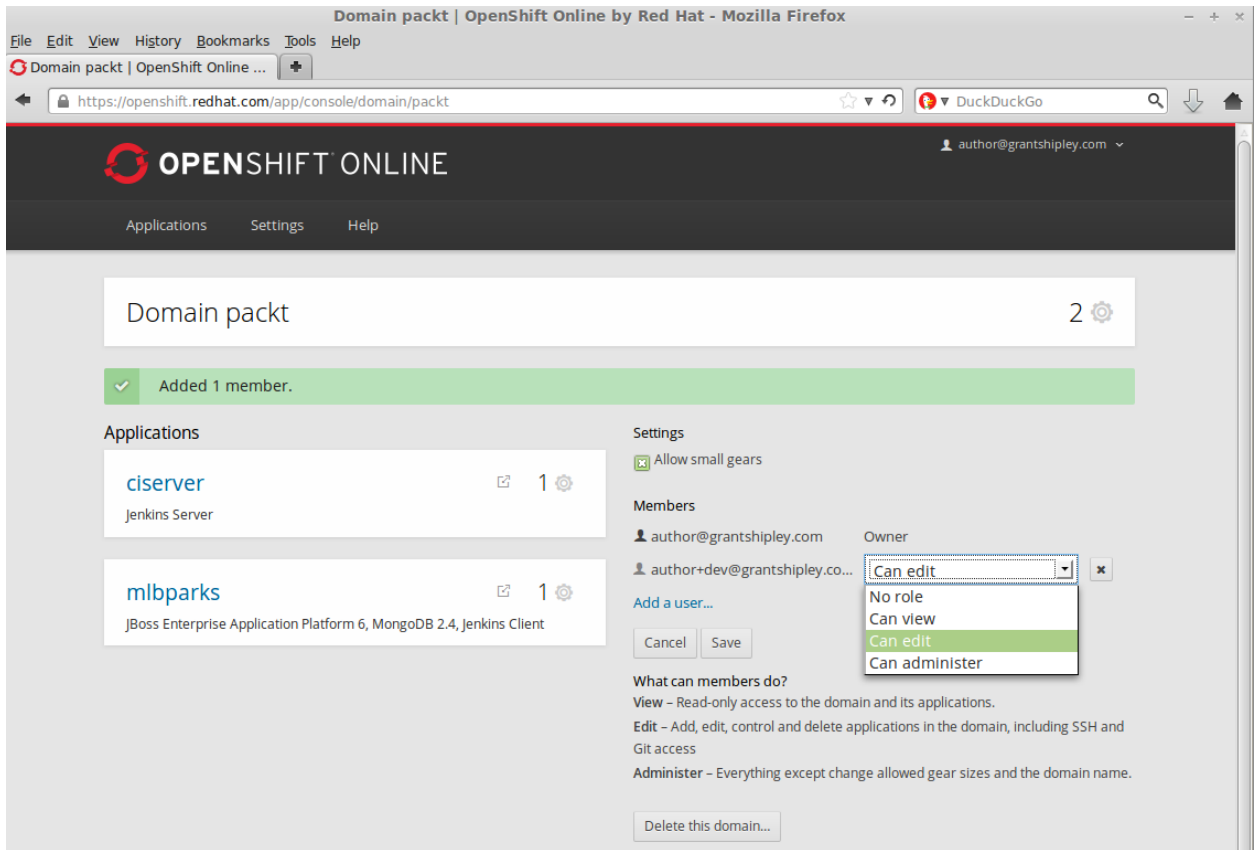
Settings

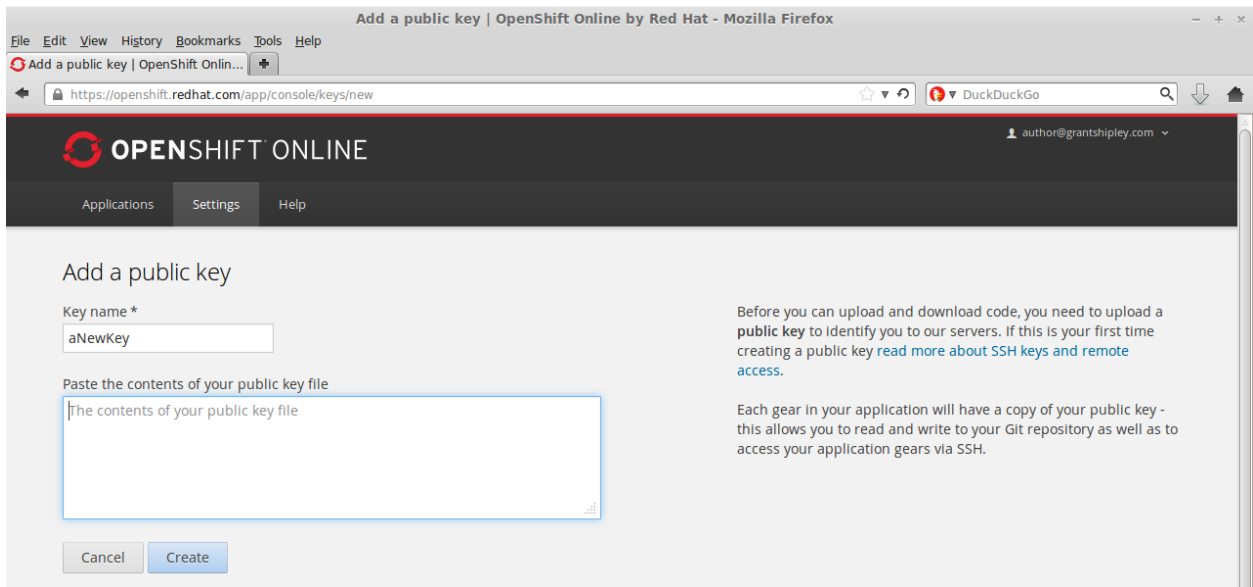
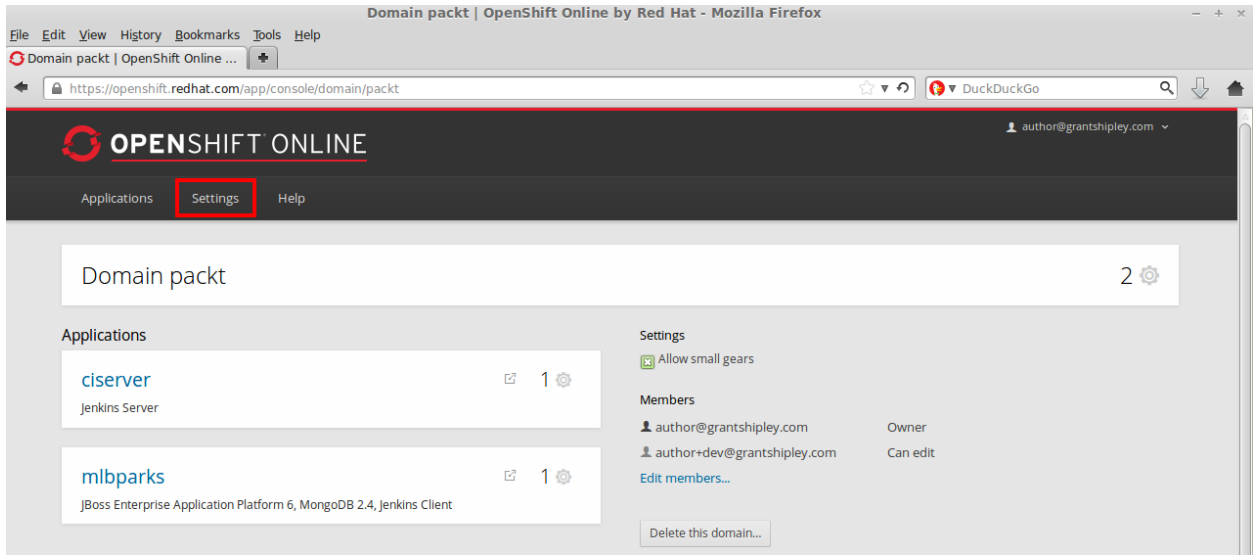
- Allow small gears

Members

author@grantshiple.com	Owner
author+dev@grantshiple.co...	Can edit

[Edit members...](#)





Chapter 9

Applications | OpenShift Online by Red Hat - Mozilla Firefox

File Edit View History Bookmarks Tools Help

Applications | OpenShift Online by...

https://openshift.redhat.com/app/console/applications

OPENSIFT ONLINE author@grantshipley.com

Applications Settings Help

Applications 2 of 16

Available in domain packt

ciserver Jenkins Server	1
mlbparks JBoss Enterprise Application Platform 6, MongoDB 2.4, Jenkins Client	1

Add Application...

You may want to...

- Use an empty domain
 - packtdev
 - packtqa
- See all domains
- Use your own domain name
- Create a scalable application

From the command line

The rhc client lets you:

- Access logs
- Save and restore backups
- Connect directly to internal services

PHP

[see all](#)



PHP 5.3



PHP 5.3 with Zend Server 5.6



PHP 5.4



PHP 5.4 with Zend Server 6.1



CakePHP
NOT SCALABLE



Reveal.js
CSS3 HTML5 PRESENTATIONS



OPENSIFT ONLINE author@grantshipley.com

Applications Settings Help

1 Choose a type of application 2 Configure the application 3 Next steps

Choose a web programming cartridge or kick the tires with a quickstart. After you create the application you can **add cartridges to enable additional capabilities** like databases, metrics, and continuous build support with Jenkins.

or

- Java
- PHP
- Ruby
- Python
- Node.js
- Perl
- All web cartridges
- All instant applications
- xPaaS
- Blogs
- Content management systems

Featured

Vert.x 2.1

Vert.x is a lightweight, high performance application platform for the JVM designed for modern mobile, web, and enterprise applications.

<http://vertx.io>

Community created
Does not receive automatic security updates

COMMUNITY JAVA POLYGOT

AeroGear Push 0.X

AeroGear UnifiedPush Server allows for sending native push messages to different mobile operation systems. This initial community edition of the server supports Apple's Push Notification Service (APNs), Google Cloud Messaging (GCM) and Mozilla's SimplePush.

It has a built in administrative console that makes it easy for developers of any type to create and manage push related aspects of their applications.

[Learn more](#)

☆ OpenShift maintained
Does not receive automatic security updates

NEW INSTANT APP JAVA MESSAGING NOT SCALABLE XPAAS

JBoss Fuse 6.1

The JBoss Fuse enterprise service bus is a technology for building and implementing communication between different applications, services and data. It's specifically designed for extensive connectivity. This cartridge is an alpha release of JBoss Fuse 6.1 for OpenShift.

Note: It is recommended that you use a medium sized gear to deploy JBoss Fuse due to memory requirements. Running in a small gear may result in slow interface responsiveness.

[Learn more](#)

☆ OpenShift maintained
Does not receive automatic security updates

INTEGRATION JAVA JBOSS MESSAGING XPAAS

CodeIgniter

Get up and running quickly with a CodeIgniter installation on OpenShift's platform-as-a-service. The backend database is MySQL and the database name is the same as your application name (using `$_ENV['OPENSHIFT_APP_NAME']`).

Useful resources:

<https://www.openshift.com/blogs/getting-started-with-php-codeigniter-mongodb-paas>

[Learn more](#)

Community created
Does not receive automatic security updates

INSTANT APP PHP

CodeIgniter

REVIEWED Added by sgoodwin on Friday, May 10, 2013

Deploy Now

Get up and running quickly with a CodeIgniter installation on OpenShift's platform-as-a-service. The backend database is MySQL and the database name is the same as your application name (using `$_ENV['OPENSHIFT_APP_NAME']`).

0
votes

Useful resources:

- <https://www.openshift.com/blogs/getting-started-with-php-codeigniter-mongodb-paas>

Uses **php-5**, **mysql-5** with code from <https://github.com/openshift/CodeIgniterQuickStart>

Language: PHP

Website: <http://ellislab.com/codeigniter>

Tags: framework instant_app php

- 1 Choose a type of application
- 2 **Configure the application**
- 3 Next steps

Based On

CodeIgniter Quickstart

Get up and running quickly with a CodeIgniter installation on OpenShift's platform-as-a-service. The backend database is MySQL and the database name is the same as your application name (using \$_ENV['OPENSIFT_APP_NAME']).

Useful resources:

https://www.openshift.com/blogs/getting-started-with-php-codeigniter-mongodb-paas

[Learn more](#)

Community created

Does not receive automatic security updates

Public URL

http:// - .rhcloud.com

You can also [create a new domain](#).

OpenShift will automatically register this domain name for your application. You can add your own domain name later.

Source Code

Your application will start with an exact copy of the code and configuration provided in this Git repository. OpenShift may expect certain files to exist in certain directories, which may require you to update your repository after creation.

Gears

Small

Gears are the application containers running your code. For most applications, the small gear size provides plenty of resources. You can also [upgrade your plan](#) to get access to more gear sizes.

Cartridges

and

Applications are composed of cartridges - each of which exposes a service or capability to your code. All applications must have a web cartridge.

Scaling

OpenShift automatically routes web requests to your web gear. If you allow your application to scale, we'll set up a load balancer and allocate more gears to handle traffic as you need it.

+1

- 1
- Choose a type of application
- 2
- Configure the application
- 3
- Next steps

✓ MySQL 5.1 database added. Please make note of these credentials:

```

Root User: adminZdC79IJ
Root Password: K39q6KCqLtY
Database Name: codeigniter

Connection URL: mysql://$OPENSIFT_MYSQL_DB_HOST:$OPENSIFT_MYSQL_DB_PORT/

You can manage your new MySQL database by also embedding phpmyadmin.
The phpmyadmin username and password will be the same as the MySQL credentials above.
```

Your application has been created. [Continue to the application overview page.](#)

Making code changes

Install the Git client for your operating system, and from your command line run

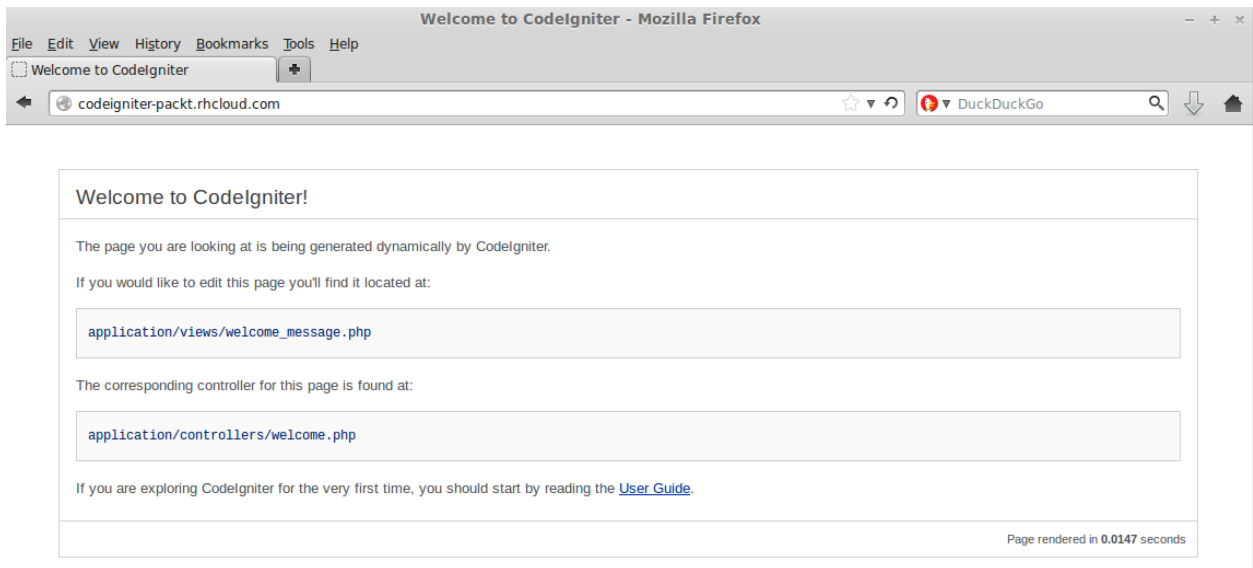
```
git clone ssh://53643f65e0b8cdae61000002@codeigniter-packt.rhcloud.com:~/git/codeigniter.git/
cd codeigniter/
```

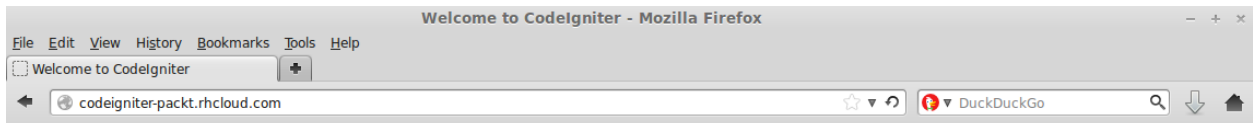
Manage your app

The console is convenient, but if you need deeper control try our other client tools

Command-Line

All of the capabilities of OpenShift are exposed through our command line tool, [rhc](#). Follow these steps to [install the client](#) on Linux, Mac OS X, or Windows.





Welcome to CodeIgniter on OpenShift!

The page you are looking at is being generated dynamically by CodeIgniter.

If you would like to edit this page you'll find it located at:

```
application/views/welcome_message.php
```

The corresponding controller for this page is found at:

```
application/controllers/welcome.php
```

If you are exploring CodeIgniter for the very first time, you should start by reading the [User Guide](#).

cartadd-packt.rhcloud.com [change](#)

Created 1 minute ago in domain [packt](#)

Started 1  

Cartridges

	Status	Gears	Storage
 PHP 5.4	Started	1 small	1 GB

Databases

- Add MongoDB 2.4
- Add MySQL 5.5
- Add PostgreSQL 9.2

Or, see the entire list of cartridges you can add

Continuous Integration

- Enable Jenkins

Source Code

`ssh://536460cb4382ec8252000b1d@cartad`

Pass this URL to 'git clone' to copy the repository locally.

Remote Access

[Want to log in to your application?](#)


Members from domain packt

- author@grantshipley... Owner
- author+dev@grantshi... Can edit


[Delete this application...](#)


- 1
- Choose a cartridge type
- 2
- Configure the cartridge
- 3
- Next steps


Choose a cartridge to add to your application.

 **MongoDB 2.4**
 MongoDB is a scalable, high-performance, open source NoSQL database.


 **MySQL 5.1**
 MySQL is a multi-user, multi-threaded SQL database server.


 **MySQL 5.5**
 MySQL is a multi-user, multi-threaded SQL database server.


 **PostgreSQL 8.4**
 PostgreSQL is an advanced Object-Relational database management system

 **PostgreSQL 9.2**
 PostgreSQL is an advanced Object-Relational database management system

 **Jenkins Client**
 The Jenkins client connects to your Jenkins application and enables builds and testing of your application. Requires the Jenkins Application to be created via the new application page. Based on Jenkins Client 1.509+


 **OpenShift Metrics 0.1**
 An experimental cartridge that demonstrates retrieving real-time statistics from your application. May be removed or replaced in the future.

 **SwitchYard 0.8.0**
 SwitchYard is a lightweight service delivery framework providing full lifecycle support for developing, deploying, and managing service-oriented applications.

 **Cron 1.4**
 The Cron cartridge allows you to run command line programs at scheduled times. Use this for background jobs and periodic processing.

Has Dependencies

 **RockMongo 1.1**
 Web based MongoDB administration tool. Requires the MongoDB cartridge to be installed first.
 Requires [mongodb-2.4](#)

 **phpMyAdmin 4.0**
 Web based MySQL admin tool. Requires the MySQL cartridge to be installed
 Requires [mysql-5.5](#) or [mysql-5.1](#)

- 1 Choose a cartridge type
- 2 Configure the cartridge
- 3 Next steps

MongoDB 2.4

MongoDB is a scalable, high-performance, open source NoSQL database.

Website: <http://www.10gen.com>

- ☆ OpenShift maintained
- 🔒 Receives automatic security updates

Using Gear Size Small

Do you want to add the MongoDB 2.4 cartridge to your application?

[Back](#) [Add Cartridge](#) +0 🌀

cartadd-packt.rhcloud.com [change](#)

Created 19 minutes ago in domain packt

Cartridges

Cartridge	Status	Gears	Storage
PHP 5.4	Started	1 small	1 GB
MongoDB 2.4			

Database: cartadd User: admin Password: [show](#)

Continuous Integration

[Enable Jenkins](#)

Tools and Support

- [Add 10gen Mongo Monitoring Service Agent](#)
- [Add RockMongo 1.1](#)

Started 1

Restart Application

Depending on the size of your application it may take up to several minutes to restart.

Pass this URL to your terminal locally.

Remote Access

[Want to log in?](#)

[Cancel](#) [Restart](#)

Members from domain packt

- author@grantshipley... Owner
- author+dev@grantshi... Can edit

cartadd-packt.rhcloud.com [change](#)

Created 23 minutes ago in domain packt

Started 1

New Alias for `cartadd`

Aliases allow you to use your own domain names for your apps on OpenShift. To set up your own domain name for app `cartadd`

1. [Set up the CNAME record with your DNS provider](#)
2. Configure OpenShift to use your alias:

Application URL `cartadd-packt.rhcloud.com`

The current application URL. Set up a CNAME record with your DNS provider pointing to this URL.

Domain name *

Enter your custom domain name. e.g. `www.example.com` or `something.example.com`

SSL Certificate

Optionally upload an SSL certificate for your custom domain alias to allow secure HTTPS communication with your app.

SSL Certificate * No file selected.

Certificate files must be Base64 PEM-encoded and typically have a `.crt` or `.pem` extension. You may combine multiple certificates and certificate chains in a single file, but the RSA or DSA private key must always be provided in a separate file.

SSL Certificate Chain No file selected.

Optionally you can provide a certificate chain in a separate PEM-encoded file.

Certificate Private Key * No file selected.

RSA or DSA private key file for the root certificate in PEM-encoded format.

Private Key Pass Phrase

Pass phrase for the certificate private key, required if the provided private key is encrypted.

OPENSIFT ONLINE author@grantshipley.com

Applications Settings Help

cartadd-packt.rhcloud.com [change](#) Started 1

Created about 2 hours ago in domain packt

Cartridges

Cartridge	Status	Gears	Storage
PHP 5.4	Started	1 small	1 GB
MongoDB 2.4			

Database: cartadd User: admin Password: [show](#)

Source Code

```
ssh://536460cb4382ec825200b1d@cartad
```

Pass this URL to 'git clone' to copy the repository locally.

Remote Access

[Want to log in to your application?](#)

Members from domain packt

author@grantshipley...	Owner
author+dev@grantshi...	Can edit

[Delete this application...](#)

Continuous Integration
[Enable Jenkins](#)

Tools and Support
[Add 10gen Mongo Monitoring Service Agent](#)
[Add RockMongo 1.1](#)

[Or, see the entire list of cartridges you can add](#)

OPENSIFT ONLINE author@grantshipley.com

Applications Settings Help

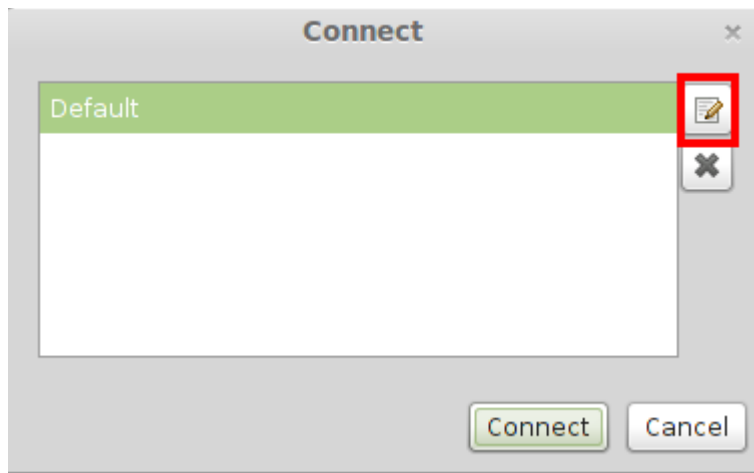
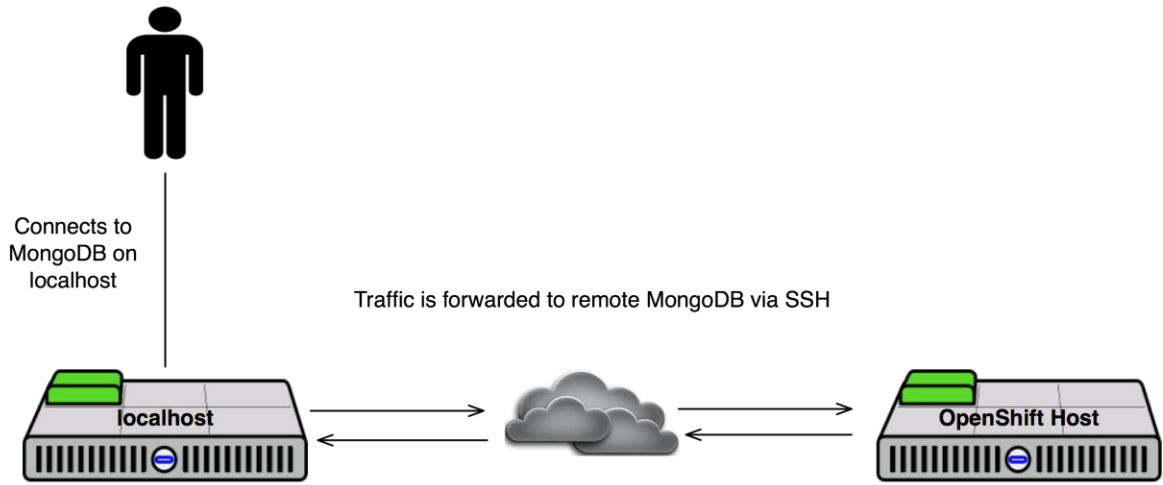
Delete Application

Are you sure you want to delete the application 'cartadd'?

This will delete all the code and data associated with the app, and cannot be undone. Make sure this is something you really want to do!

[Cancel](#) [Delete](#)

Chapter 10



Connect Dialog ×

Name :

Either provide a URI ...

URI : ▼

Or the settings below

Servers : ▼

Connection Mode : ▼

Databases :

User :

Password :

Connection

Socket Type : ▼

Connect Timeout : ▲ ▼

Socket Timeout : ▲ ▼

Safe Writes :

Secondary Reads :

Proxy

Type : ▼

Host :

Port : ▲ ▼

UMongo

File Tools Help

Mongo Instances

- Mongo: localhost/127.0.0.1
- MongoD: localhost/127.0
- mlbparks (44/47684)
 - openshift (1/80)
 - system.indexes (4/360)
 - system.users (1/96)
 - teams (30/46816)
 - _id_ (1/8176)

Collection Command Document Sharding Tools

Name : teams

Full Name : mlbparks.teams

Query Options :

Write Concern : { "getLastError" : 1 }

Read Preference : { "mode" : "primary" }

Stats : { "serverUsed" : "localhost/127.0.0.1:27017", "ns" : "mlbparks.teams", "count" : 30, "size" : 46816, "avgObjSize" : ... }

mlbparks.teams / Find

Result View Tools

```
{ "ns": "mlbparks.teams", "name": "Find", "details": { "cursorid": 0, "server": "localhost/127.0.0.1:27017", "query": { }, "field": ... }, ... }
```

_id	name	payroll	ballpark	coordinates
53113e84127b12b090c18a58	Diamondbacks	89000000		[-112.06, ...]
53113e84127b12b090c18a59	Braves	85000000	Turner Field	
53113e84127b12b090c18a5a	Orioles	92000000	Oriole Park	
53113e84127b12b090c18a5b	Red Sox	150000000	Fenway Park	
53113e84127b12b090c18a5c	White Sox	117000000	U.S. Cellular Field	
53113e84127b12b090c18a5d	Cubs	103000000	Wrigley Field	
53113e84127b12b090c18a5e	Indians	71000000	Progressive Field	
53113e84127b12b090c18a5f	Reds	107000000	Great American Ballpark	
53113e84127b12b090c18a60	Tigers	150000000	Comerica Park	
53113e84127b12b090c18a61		73000000	Coors Field	[-104.994, ...]
53113e84127b12b090c18a62	Astros	32000000	Minute Maid Park	
53113e84127b12b090c18a63	Dodgers	213000000	Dodger Stadium	
53113e84127b12b090c18a64	Royals	78000000	Kauffman Stadium	
53113e84127b12b090c18a65	Marlins	45000000	Marlins Park	
53113e84127b12b090c18a66	Angels	152000000	Angel Stadium	
53113e84127b12b090c18a67	Brewers	72000000	Miller Park	
53113e84127b12b090c18a68	Twins	80000000	Target Field	
53113e84127b12b090c18a69	Mets	84000000	Citi Field	
53113e84127b12b090c18a6a	Yankees	210000000	Yankee Stadium	

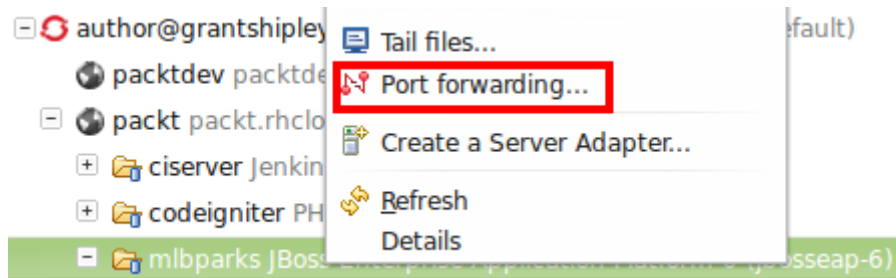
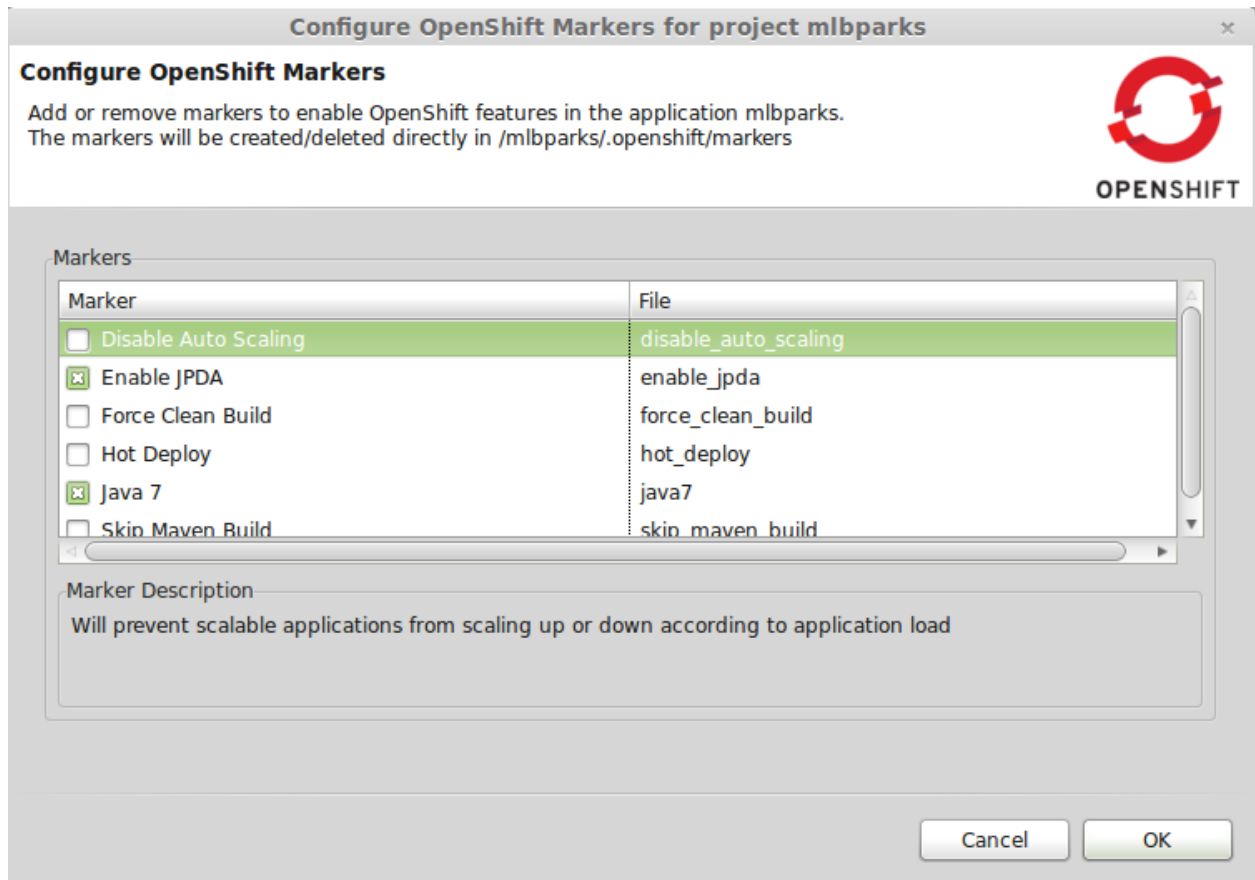
Jobs:

Project Explorer

- + JAX-
- + Dep
- + Web
- + JAX-
- + Java
- + Java
- + Dep
- + dep
- + pom
- + REA
- + src
- + targ

- New
- Go Into
- Show In Shift+Alt+W
- Copy Ctrl+C
- Copy Qualified Name
- Paste Ctrl+V
- Delete Delete
- Remove from Context Shift+Ctrl+Alt+Down
- Build Path
- Refactor Shift+Alt+T
- Import
- Export
- Refresh F5
- Close Project
- Close Unrelated Projects
- Mark as Deployable
- Validate
- Show in Remote Systems view
- Profile As
- Debug As
- Run As
- Compare With
- Replace With
- Restore from Local History...
- Maven
- Java EE Tools
- OpenShift
- Team
- Configure
- Source
- Properties Alt+Enter

Configure Markers...



Application port forward

Please configure port forwarding for the 'mlbparks' application



OPENSIFT

Service	Local Address	Local Port	Remote Address	Remote Port	Status
java	127.0.0.1	3528	127.7.150.129	3528	Stopped
java	127.0.0.1	4447	127.7.150.129	4447	Stopped
java	127.0.0.1	5445	127.7.150.129	5445	Stopped
java	127.0.0.1	8080	127.7.150.129	8080	Stopped
java	127.0.0.1	8787	127.7.150.129	8787	Stopped
java	127.0.0.1	9990	127.7.150.129	9990	Stopped
java	127.0.0.1	9999	127.7.150.129	9999	Stopped
mongodb	127.0.0.1	27017	127.7.150.130	27017	Stopped

Refresh

Start All

Stop All

Use '127.0.0.1' as the local address for all Services

Find free ports for all Services

OK

Debug Configurations

Create, manage, and run configurations

Attach to a Java virtual machine accepting debug connections



type filter text

- Apache Tomcat
- Eclipse Application
- Eclipse Data Tools
- Generic Server
- Generic Server(External Launch)
- Ju** GWT JUnit Test
- HTTP Preview
- J2EE Preview
- Java Applet
- Java Application
- Ju** JUnit
- Ju** JUnit Plug-in Test
- m2** Maven Build
- OSGi Framework
- Remote Java Application

Filter matched 21 of 21 items

Name: MLBParkResource

Connect Source Common

Project: mlbparks

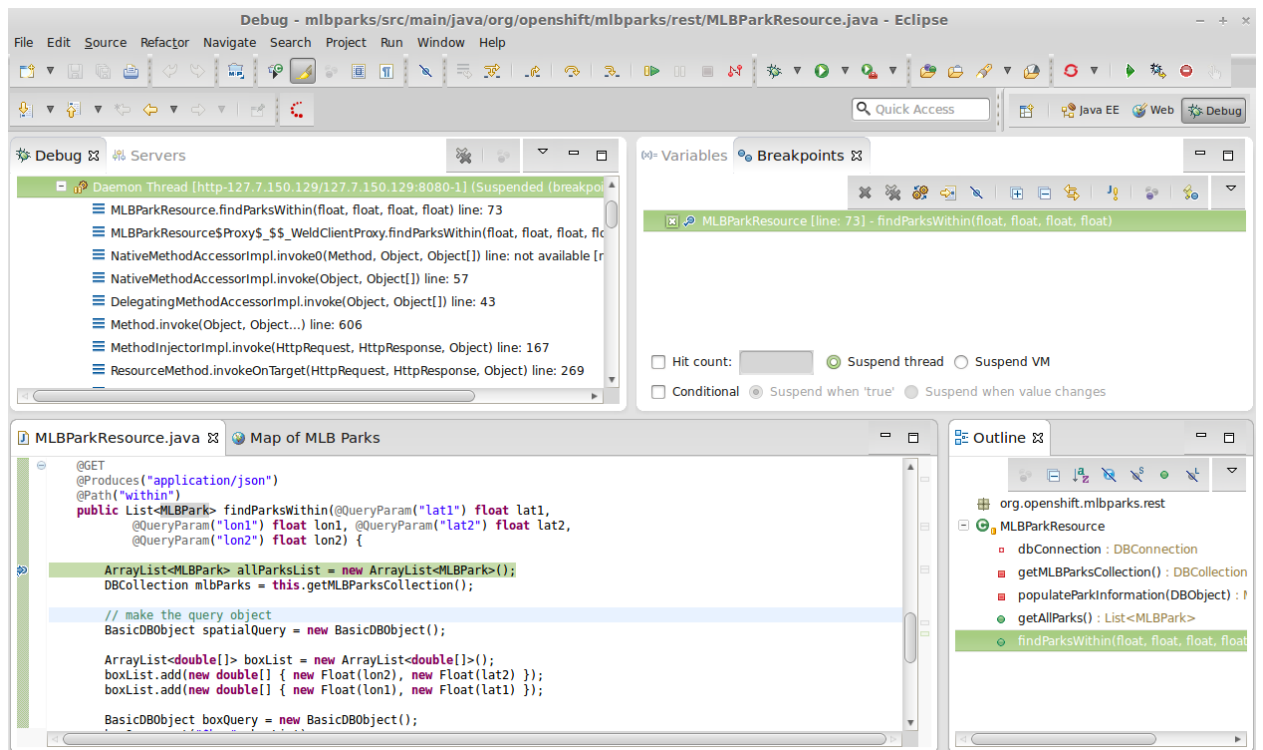
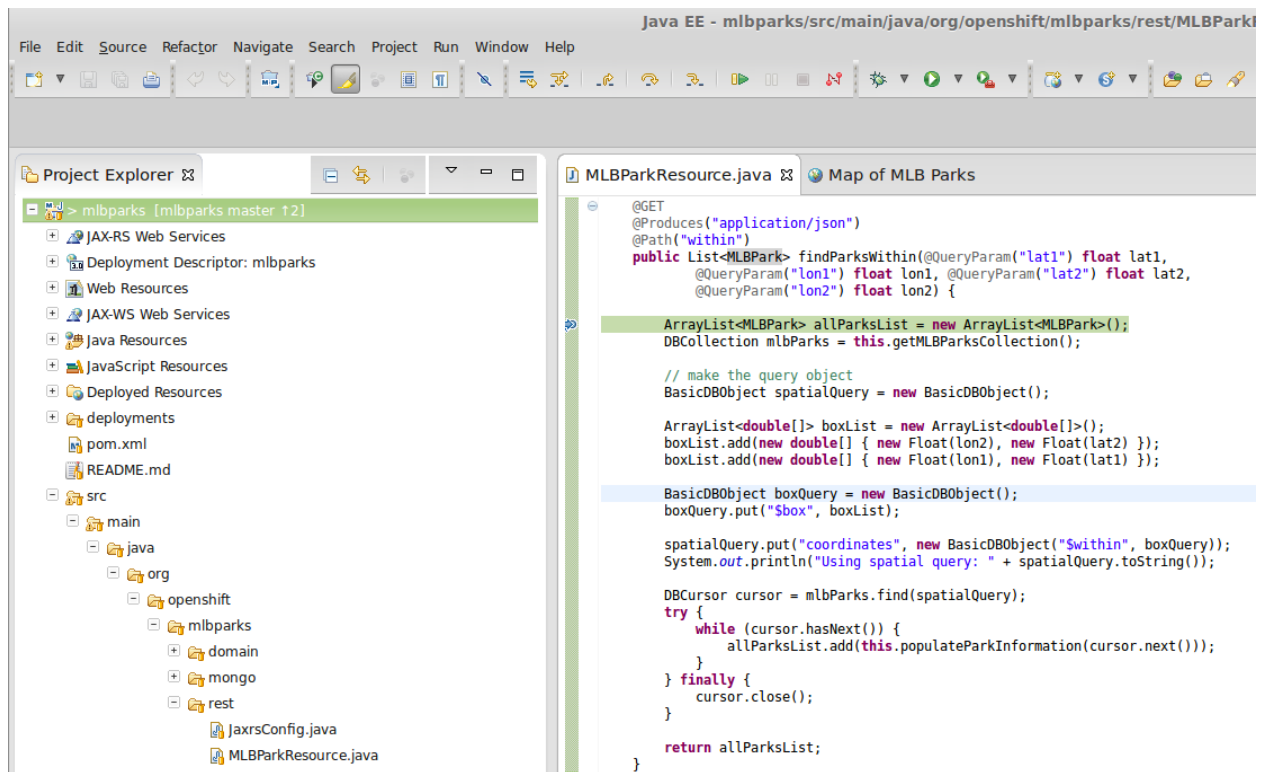
Connection Type: Standard (Socket Attach)

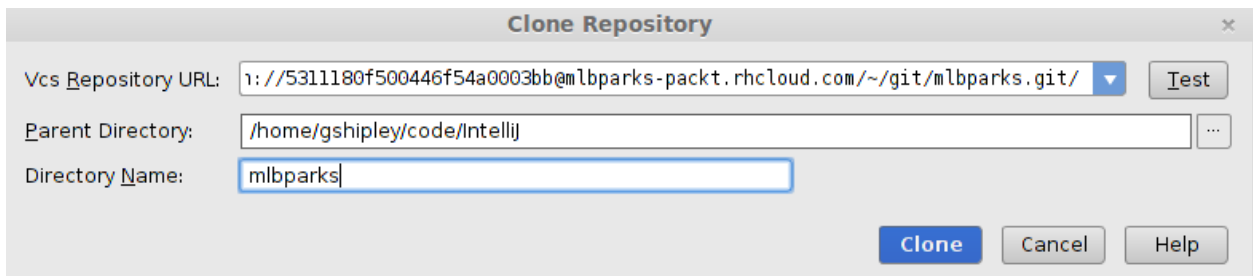
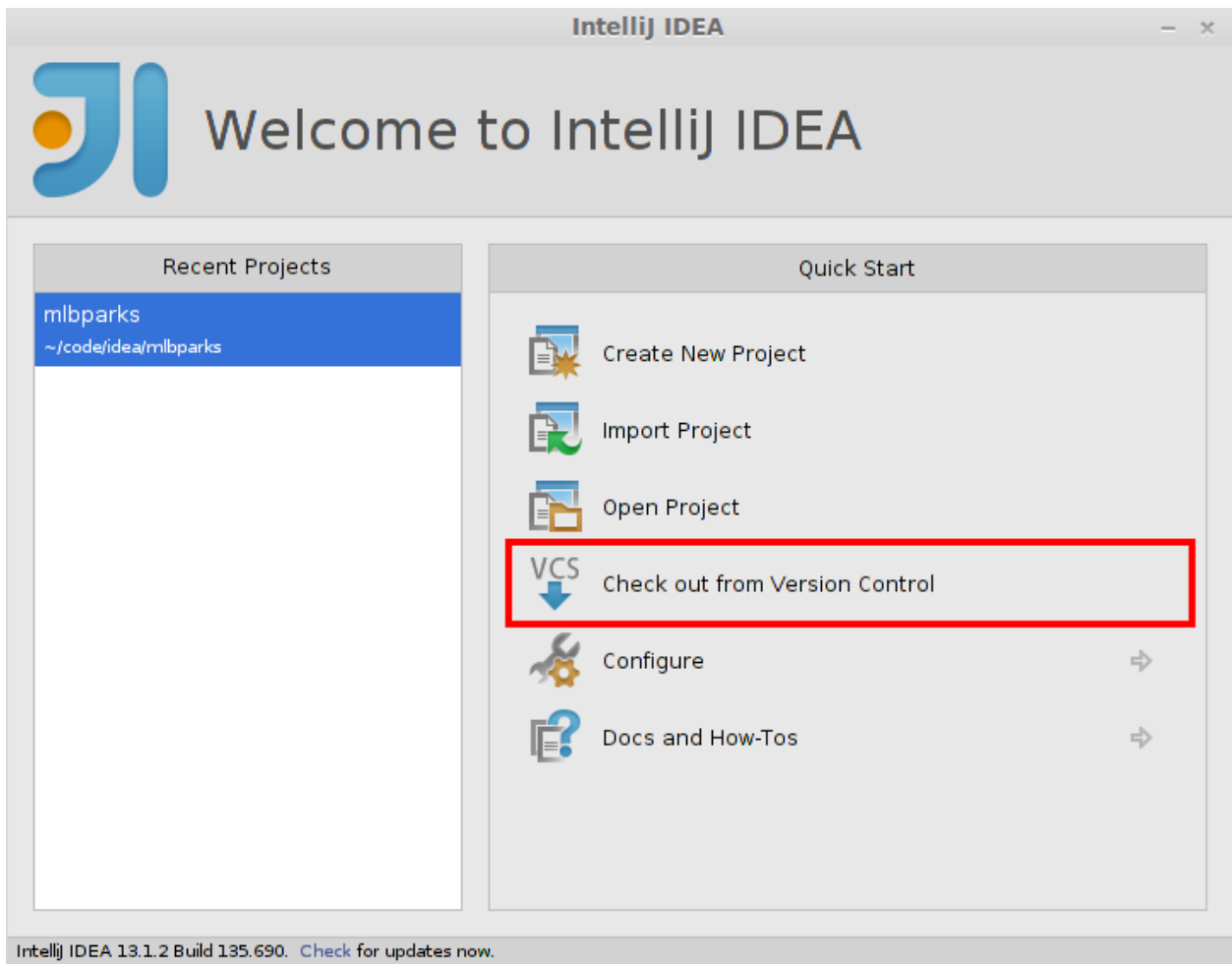
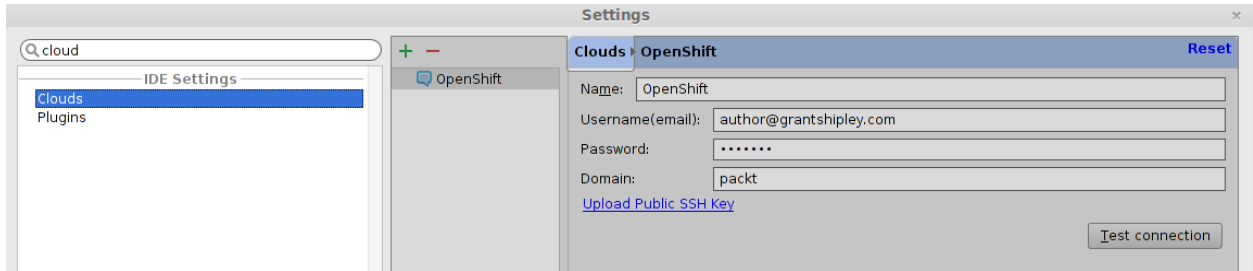
Connection Properties:

Host: localhost

Port: 8787

Allow termination of remote VM





/Account

Summary

Statements

Users

Profile

AWS

My Profile

 EDIT

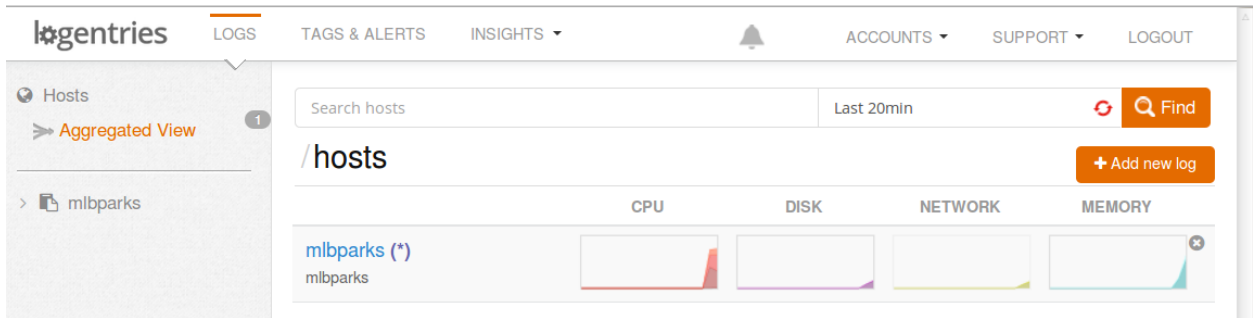
 CHANGE PASSWORD

Username	author@grantshipley.com
My email	author@grantshipley.com
Name	Grant Shipley
Timezone offset	UTC-06:00

Notifications

Account key

Show



The screenshot shows the Logentries dashboard interface. At the top, there is a navigation bar with the Logentries logo and menu items: LOGS, TAGS & ALERTS, INSIGHTS, ACCOUNTS, SUPPORT, and LOGOUT. A search bar is present with the text 'Search hosts' and a 'Find' button. Below the navigation, the 'Hosts' section is active, displaying a search bar with 'Last 20min' and a 'Find' button. A '+ Add new log' button is also visible. The main content area shows a list of hosts, with 'mlbparks (*)' selected. Below the host name, there are four monitoring graphs for CPU, DISK, NETWORK, and MEMORY. The CPU graph shows a red line with a peak, while the other graphs show low activity.



Hosts

Aggregated View

1

Search logs

Last 20min



Find

/hosts/mlbparks

Logs

Settings

+ Add new log

CPU Utilization	Disk Transfer	Network Bandwidth
60% Load	1.2GB Read	0.1GB Inbound
5.5% IO Wait	0.2GB Write	49.3MB Outbound

jbosseap.log (*) /var/lib/openshift/5311180f500446f54a0003bb/app-root/logs/jbosseap.log

linuxsyslog log (*) Token

mongodb.log (*) /var/lib/openshift/5311180f500446f54a0003bb/app-root/logs/mongodb.log

logentries LOGS TAGS & ALERTS INSIGHTS ACCOUNTS SUPPORT LOGOUT

Hosts Aggregated View 1

mlbparks

Search events ☆ f(x) Last 20min Find

/hosts/mlbparks/mongodb.log

Entries Graphs Tags & Alerts Settings

⏪ || ▶ Live Tail 🔄 ⌂ ☰ ⬇️ GZ ⚙️

All 27

```

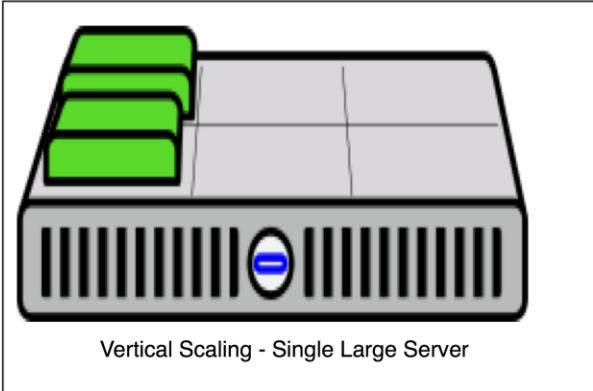
» 21:45:35.809 Tue May 6 23:45:35.644 [signalProcessingThread] got signal 15 (Terminated), will
» 21:45:35.809 Tue May 6 23:45:35.686 [signalProcessingThread] now exiting
» 21:45:35.809 Tue May 6 23:45:35.686 dbexit:
» 21:45:35.809 Tue May 6 23:45:35.686 [signalProcessingThread] shutdown: going to close listenin
» 21:45:35.809 Tue May 6 23:45:35.686 [signalProcessingThread] closing listening socket: 11
» 21:45:35.809 Tue May 6 23:45:35.686 [signalProcessingThread] shutdown: going to flush diaglog.
» 21:45:35.809 Tue May 6 23:45:35.694 [signalProcessingThread] shutdown: going to close sockets.
» 21:45:35.809 Tue May 6 23:45:35.694 [signalProcessingThread] shutdown: waiting for fs prealloc
» 21:45:35.809 Tue May 6 23:45:35.694 [signalProcessingThread] shutdown: lock for final commit..
» 21:45:35.809 Tue May 6 23:45:35.694 [signalProcessingThread] shutdown: final commit...
» 21:45:35.809 Tue May 6 23:45:35.702 [signalProcessingThread] shutdown: closing all files...
» 21:45:35.809 Tue May 6 23:45:35.703 [signalProcessingThread] closeAllFiles() finished
» 21:45:35.809 Tue May 6 23:45:35.703 [signalProcessingThread] journalCleanup...
» 21:45:35.809 Tue May 6 23:45:35.703 [signalProcessingThread] removeJournalFiles
» 21:45:36.009 Tue May 6 23:45:35.786 [signalProcessingThread] shutdown: removing fs lock...
» 21:45:36.009 Tue May 6 23:45:35.797 dbexit: really exiting now

```

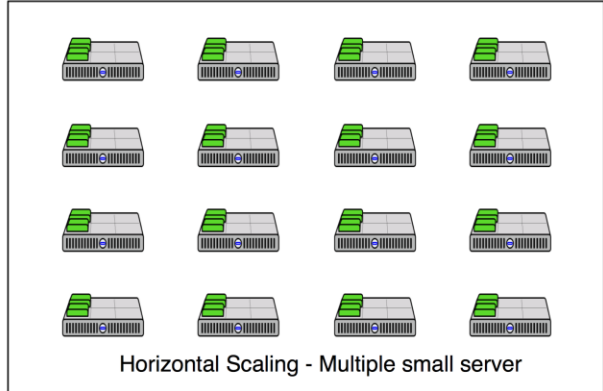
Chapter 12



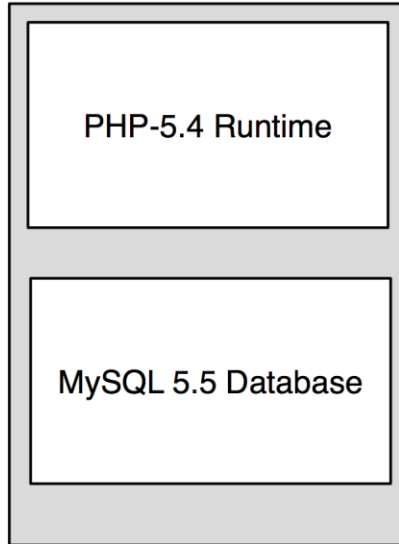
HTTP Request

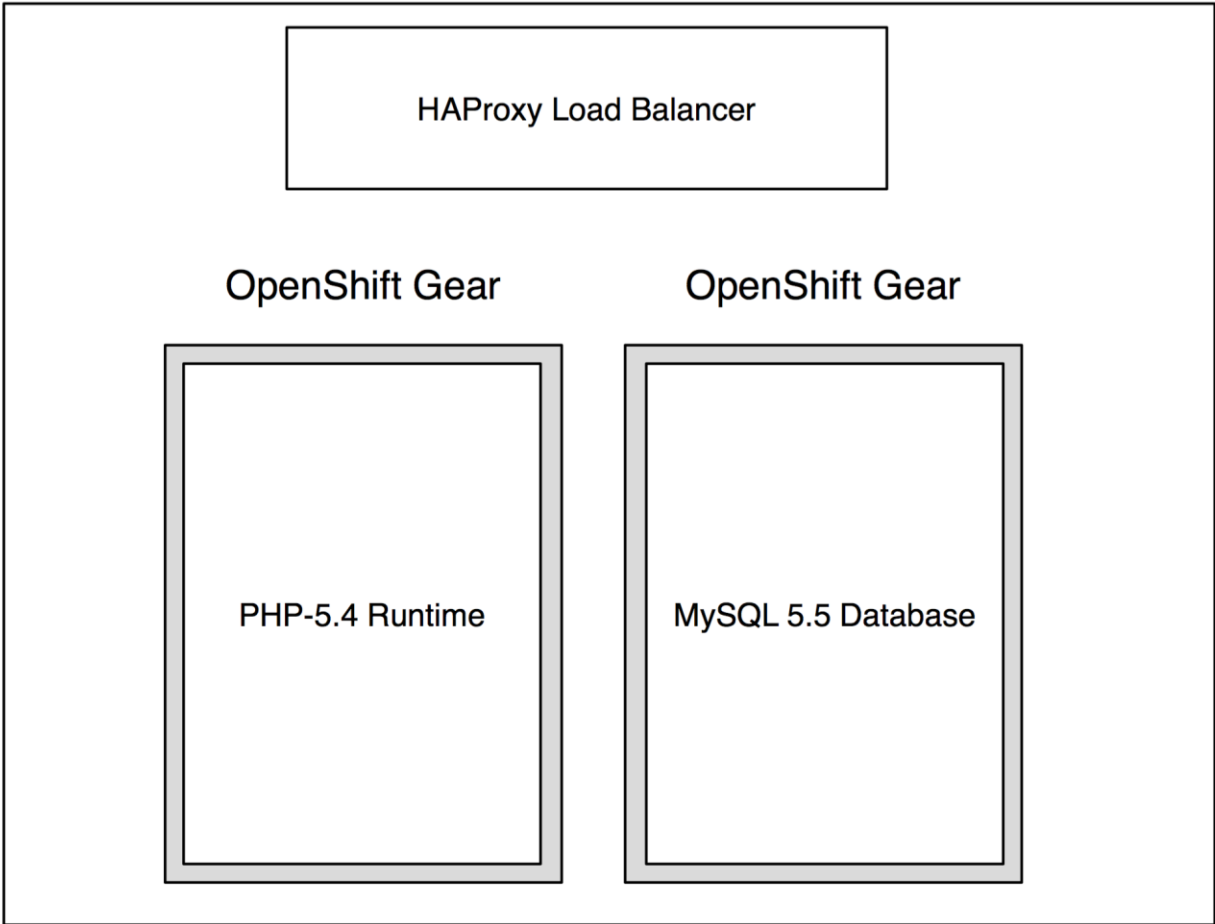


HTTP Request



OpenShift Gear





Application Gear Group

1 Choose a type of application

2 **Configure the application**

3 Next steps

Based On

PHP 5.4 Cartridge

PHP is a general-purpose server-side scripting language originally designed for Web development to produce dynamic Web pages. Popular development frameworks include: CakePHP, Zend, Symfony, and Code Igniter.

<http://www.php.net>

☆ OpenShift maintained

🔒 Receives automatic security updates

Public URL

-

You can also [create a new domain](#).

OpenShift will automatically register this domain name for your application. You can add your own domain name later.

Source Code

We'll create a Git code repository in the cloud, and populate it with a set of reasonable defaults. If you provide a Git URL, your application will start with an exact copy of the code and configuration provided in this Git repository.

Gears

Small

Gears are the application containers running your code. For most applications, the small gear size provides plenty of resources. You can also [upgrade your plan](#) to get access to more gear sizes.

Cartridges

PHP 5.4

Applications are composed of cartridges - each of which exposes a service or capability to your code. All applications must have a web cartridge.

Scaling

OpenShift automatically routes web requests to your web gear. If you allow your application to scale, we'll set up a load balancer and allocate more gears to handle traffic as you need it.

[Back](#)



[Create Application](#)

+1  

[webscaled-packt.rhcloud.com](#) [change](#)

Created 5 minutes ago in domain packt

Cartridges

	Scales	Status	Gears	Storage
 PHP 5.4	1 - 16	Started	1 small	1 GB
<hr/>				
 Web Load Balancer				✕

Databases

- [Add MongoDB 2.4](#)
- [Add MySQL 5.5](#)
- [Add PostgreSQL 9.2](#)

Continuous Integration




- [Enable Jenkins](#)

Or, see the entire list of cartridges you can add

webscaled-packt.rhcloud.com [change](#)

Created 9 minutes ago in domain packt

Cartridges

 PHP 5.4	Scales 1 - 16	Status Started	Gears 1 small	Storage 1 GB
<hr/>				
 Web Load Balancer	↗			
<hr/>				
 MySQL 5.5	Status Started	Gears 1 small	Storage 1 GB	Database: webscaled User: adminG9CYWIK Password: show

Continuous Integration

 [Enable Jenkins](#)


Tools and Support

 [Add phpMyAdmin 4.0](#)




[Or, see the entire list of cartridges you can add](#)

scaledapp-packt.rhcloud.com [change](#)

Created about 1 hour ago in domain packt

Started 7  

Cartridges

 PHP 5.4	Scales 1 - 16	Status Started	Gears 6 small	Storage 1 GB
<hr/>				
 Web Load Balancer	↗			
<hr/>				
 MySQL 5.5	Status Started	Gears 1 small	Storage 1 GB	Database: scaledapp User: adminFshVG51 Password: show

Source Code

ssh://5383e2c8500446265e000271@scaledapp-packt

Pass this URL to 'git clone' to copy the repository locally.

Remote Access

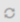
[Want to log in to your application?](#)

Members from domain packt

author@grantshipley.com Owner
author+dev@grantshipley... Can edit

[Delete this application...](#)

Continuous Integration

 [Enable Jenkins](#)

Tools and Support

 [Add phpMyAdmin 4.0](#)





[Or, see the entire list of cartridges you can add](#)

scaledapp-packt.rhcloud.com [change](#)

Started 3  

Created 11 minutes ago in domain packt

Cartridges

 PHP 5.4	Scales 2 - 16	Status Started	Gears 2 small	Storage 1 GB
 Web Load Balancer				
 MySQL 5.5		Status Started	Gears 1 small	Storage 1 GB

Database: scaledapp User: adminN6SRz5T Password: show

Source Code

ssh://5383ff88e0b8cd69ac00036e@scaledapp-packt

Pass this URL to 'git clone' to copy the repository locally.

Remote Access

[Want to log in to your application?](#)

Members from domain packt


- author@grantshipley.com Owner
- author+dev@grantshipley... Can edit

[Delete this application...](#)

Continuous Integration

 [Enable Jenkins](#)


Tools and Support

 [Add phpMyAdmin 4.0](#)

Or, see the entire list of cartridges you can add

Scale scaledapp

PHP 5.4

using 2 

OpenShift is configured to scale this cartridge with the web proxy HAProxy. OpenShift monitors the incoming web traffic to your application and automatically adds or removes copies of your cartridge (each running on their own gears) to serve requests as needed.

Control the number of gears OpenShift will use for your cartridge:

Minimum and Maximum small gears [Save](#)

Each scaled gear is created the same way - the normal post, pre, and deploy hooks are executed. Each cartridge will have its own copy of runtime data, so be sure to use a database if you need to share data across your web cartridges.

For status information about traffic to your application, see the HAProxy status page:

<http://scaledapp-packt.rhcloud.com/haproxy-status/>

Applications Settings Help

Scale `scaledapp`

PHP 5.4 using 2

OpenShift is configured to scale this cartridge with the [web proxy HAProxy](#). OpenShift monitors the incoming web traffic to your application and automatically adds or removes copies of your cartridge (each running on their own gears) to serve requests as needed.

Control the number of gears OpenShift will use for your cartridge:

Minimum and Maximum small gears

Each scaled gear is created the same way - the normal post, pre, and deploy hooks are executed. Each cartridge will have its own copy of runtime data, so be sure to use a database if you need to share data across your web cartridges.

For status information about traffic to your application, see the HAProxy status page:
<http://scaledapp-packt.rhcloud.com/haproxy-status/>

webscaled-packt.rhcloud.com/haproxy-status/ DuckDuckGo

HAProxy version 1.4.22, released 2012/08/09

Statistics Report for pid 318675

> General process information

pid = 318675 (process #1, nproc = 1)
 uptime = 04 2h03m25s
 system limits: memmax = unlimited; ulimit-n = 526
 maxsock = 526; maxconn = 256; maxpipes = 0
 current conns = 1; current pipes = 0/0
 Running tasks: 1/2

■ active UP

■ active UP, going down

■ active DOWN, going up

■ active or backup DOWN

■ active or backup DOWN for maintenance (MAINT)

■ backup UP

■ backup UP, going down

■ backup DOWN, going up

■ not checked

Display option:

- [Hide DOWN servers](#)
- [Refresh now](#)
- [CSV export](#)

External resources:

- [Primary site](#)
- [Updates \(v1.4\)](#)
- [Online manual](#)

Note: UP with load-balancing disabled is reported as "NOLB".

stats		Queue		Session rate			Sessions			Bytes		Denied		Errors			Warnings		Server											
	Cur	Max	Limit	Cur	Max	Limit	Cur	Max	Limit	Total	LbTot	In	Out	Req	Resp	Req	Conn	Resp	Retr	Redis	Status	LastChk	Wght	Act	Bck	Chk	Dwn	Dwntme	Thrtle	
Frontend				1	1	-	1	1	128	3		720	10 820	0	0	0	0	0	0	0	0	OPEN								
Backend	0	0		0	0		0	0	128	0	0	720	10 820	0	0	0	0	0	0	0	0	2h3m UP		0	0	0	0	0		

express		Queue		Session rate			Sessions			Bytes		Denied		Errors			Warnings		Server											
	Cur	Max	Limit	Cur	Max	Limit	Cur	Max	Limit	Total	LbTot	In	Out	Req	Resp	Req	Conn	Resp	Retr	Redis	Status	LastChk	Wght	Act	Bck	Chk	Dwn	Dwntme	Thrtle	
Frontend				0	2	-	0	1	128	6		2 448	1 500	0	0	0	0	0	0	0	0	OPEN								
local-gear	0	0		0	2		0	1	-	6	6	2 448	1 500	0	0	0	0	0	0	0	0	2h3m UP	L7OK/200 in 1ms	1	Y	-	0	0	0s	-
Backend	0	0		0	2		0	1	128	6	6	2 448	1 500	0	0	0	0	0	0	0	0	2h3m UP		1	1	0	0	0	0s	-

OPENSIFT ONLINE author@grantshipley.com

Applications Settings Help

webscaled-packt.rhcloud.com Started 2

Created about 2 hours ago in domain packt

Cartridges

	PHP 5.4	Scales 1 - 16	Status Started	Gears 1 small	Storage 1 GB
	Web Load Balancer				
	MySQL 5.5		Status Started	Gears 1 small	Storage 1 GB

Database: `webscaled` User: `adminG9CYWIK` Password: `show`

Source Code

ssh://5383e8f45004464fba0004e0@webscaled-pack

Pass this URL to 'git clone' to copy the repository locally.

Remote Access

Want to log in to your application?

Members from domain packt

author@grantshipley.com	Owner
author+dev@grantshipley....	Can edit

Continuous Integration Tools and Support

Enable Jenkins Add phpMyAdmin 4.0

Or, see the entire list of cartridges you can add

Based On **Do-It-Yourself 0.1 Cartridge**

The Do-It-Yourself (DIY) application type is a blank slate for trying unsupported languages, frameworks, and middleware on OpenShift. See the community site for examples of bringing your favorite framework to OpenShift.

- ☆ OpenShift maintained
- 🔒 Receives automatic security updates

Public URL - .rhcloud.com

You can also create a new domain.
OpenShift will automatically register this domain name for your application. You can add your own domain name later.

Source Code

We'll create a Git code repository in the cloud, and populate it with a set of reasonable defaults. If you provide a Git URL, your application will start with an exact copy of the code and configuration provided in this Git repository.

Gears **Small**

Gears are the application containers running your code. For most applications, the small gear size provides plenty of resources. You can also [upgrade your plan](#) to get access to more gear sizes.

Cartridges **Do-It-Yourself 0.1**

Applications are composed of cartridges - each of which exposes a service or capability to your code. All applications must have a web cartridge.

Scaling **No scaling**

OpenShift automatically routes web requests to your web gear. This application shares filesystem resources and can't be scaled.

+1 🌐 💰

tomcat8-packt.rhcloud.com

Welcome to your Do-It-Yourself application on OpenShift

Do-It-Yourself is an experimental cartridge that provides a way to try unsupported languages, frameworks, and middleware on OpenShift. To get started, add your framework of choice and modify `._openshift/action_hooks/{start, stop}` to start and stop your application. The only restriction is that your application should bind to `$(OPENSHIFT_DIY_IP):8080`. Don't forget to stop the existing server that is running before you push your stop file.

Deploying code changes

OpenShift uses the [Git version control system](#) for your source code, and grants you access to it via the Secure Shell (SSH) protocol. In order to upload and download code to your application you need to give us your [public SSH key](#). You can upload it within the web console or install the [RHC command line tool](#) and run `rhc setup` to generate and upload your key automatically.

Managing your application

Web Console

You can use the OpenShift web console to enable additional capabilities via cartridges, add collaborator access authorizations, designate custom domain aliases, and manage domain memberships.

tomcat8-packt.rhcloud.com

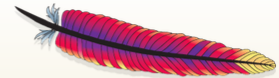
Service Temporarily Unavailable

The server is temporarily unable to service your request due to maintenance downtime or capacity problems. Please try again later.

Apache/2.2.15 (Red Hat) Server at tomcat8-packt.rhcloud.com Port 80



Apache Tomcat



Search the Site... Search

Apache Tomcat

Home
Taglibs
Maven Plugin

Download

Which version?

Tomcat 8.0

Tomcat 7.0

Tomcat 6.0

Tomcat Connectors

Tomcat Native

Archives

Apache Tomcat

Apache Tomcat is an open source software implementation of the Java Servlet and JavaServer Pages technologies. The Java Servlet and JavaServer Pages specifications are developed under the [Java Community Process](#).

Apache Tomcat is developed in an open and participatory environment and released under the [Apache License version 2](#). Apache Tomcat is intended to be a collaboration of the best-of-breed developers from around the world. We invite you to participate in this open development project. To learn more about getting involved, [click here](#).

Apache Tomcat powers numerous large-scale, mission-critical web applications across a diverse range of industries and organizations. Some of these users and their stories are listed on the [PoweredBy](#) wiki page.

Apache Tomcat, Tomcat, Apache, the Apache feather, and the Apache Tomcat project logo are trademarks of the Apache Software Foundation.

8.0.8

Please see the [README](#) file for packaging information. It explains what every distribution contains.


Binary Distributions

- Core:
 - [zip \(pgp, md5\)](#)
 - [tar.gz \(pgp, md5\)](#)
 - [32-bit Windows zip \(pgp, md5\)](#)
 - [64-bit Windows zip \(pgp, md5\)](#)
 - [64-bit Itanium Windows zip \(pgp, md5\)](#)
 - [32-bit/64-bit Windows Service Installer \(pgp, md5\)](#)

Apache Tomcat/8.0.8



If you're seeing this, you've successfully installed Tomcat. Congratulations!



Recommended Reading:

- [Security Considerations HOW-TO](#)
- [Manager Application HOW-TO](#)
- [Clustering/Session Replication HOW-TO](#)

Server Status
Manager App
Host Manager

Developer Quick Start

- [Tomcat Setup](#)
- [Realms & AAA](#)
- [Examples](#)
- [Servlet Specifications](#)
- [First Web Application](#)
- [JDBC DataSources](#)
- [Tomcat Versions](#)

Managing Tomcat

For security, access to the [manager webapp](#) is restricted. Users are defined in:

```
$CATALINA_HOME/conf/tomcat-users.xml
```

In Tomcat 8.0 access to the manager application is split between different users. [Read more...](#)

- [Release Notes](#)
- [Changelog](#)
- [Migration Guide](#)
- [Security Notices](#)

Documentation

[Tomcat 8.0 Documentation](#)

[Tomcat 8.0 Configuration](#)

[Tomcat Wiki](#)

Find additional important configuration information in:

```
$CATALINA_HOME/RUNNING.txt
```

Developers may be interested in:

- [Tomcat 8.0 Bug Database](#)
- [Tomcat 8.0 JavaDocs](#)
- [Tomcat 8.0 SVN Repository](#)

Getting Help

[FAQ and Mailing Lists](#)

The following mailing lists are available:

- [tomcat-announce](#)
Important announcements, releases, security vulnerability notifications. (Low volume).
- [tomcat-users](#)
User support and discussion
- [taglibs-user](#)
User support and discussion for [Apache Taglibs](#)
- [tomcat-dev](#)
Development mailing list, including commit messages

Other Downloads	Other Documentation	Get Involved	Miscellaneous	Apache Software Foundation
Tomcat Connectors	Tomcat Connectors	Overview	Contact	Who We Are
Tomcat Native	mod_jk Documentation	SVN Repositories	Legal	Heritage
Taglibs	Tomcat Native	Mailing Lists	Sponsorship	Apache Home
Deployer	Deployer	Wiki	Thanks	Resources