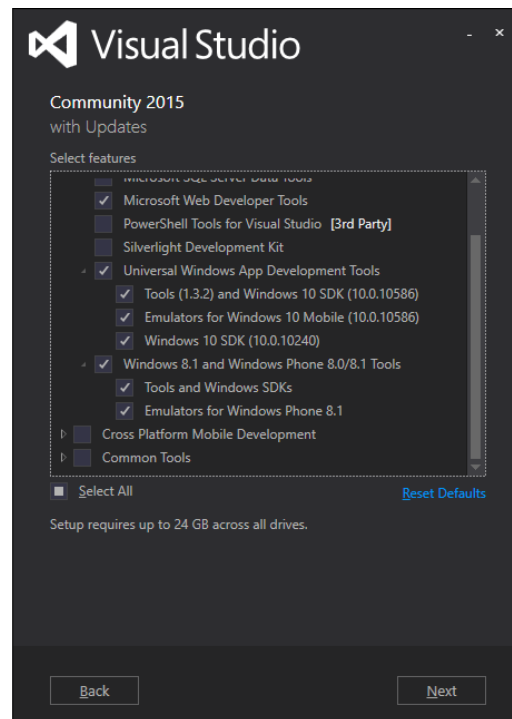
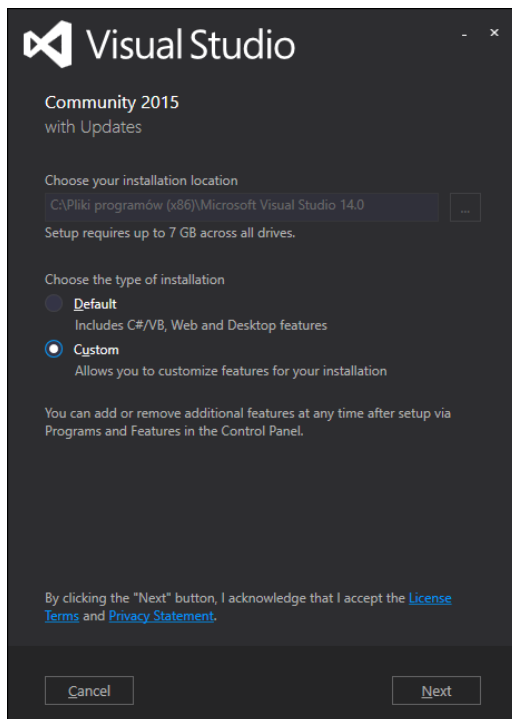
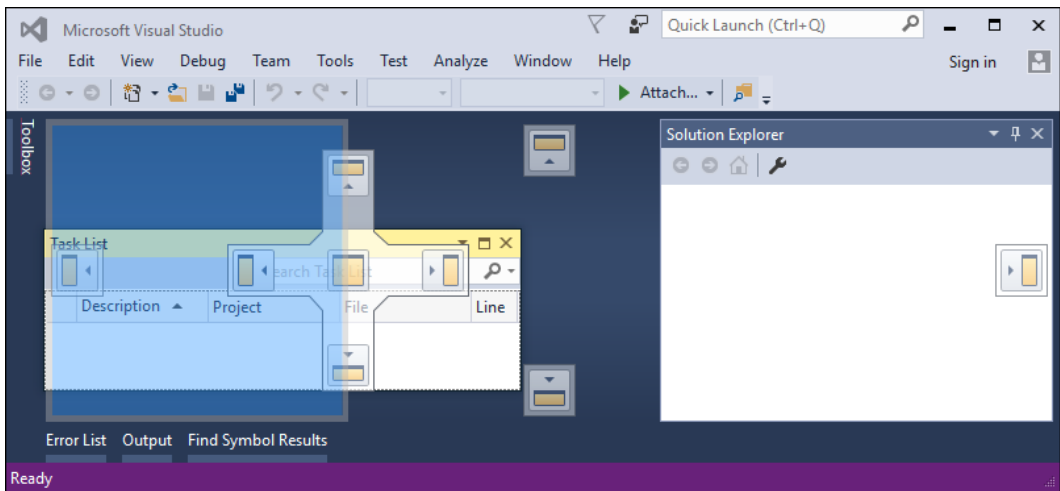
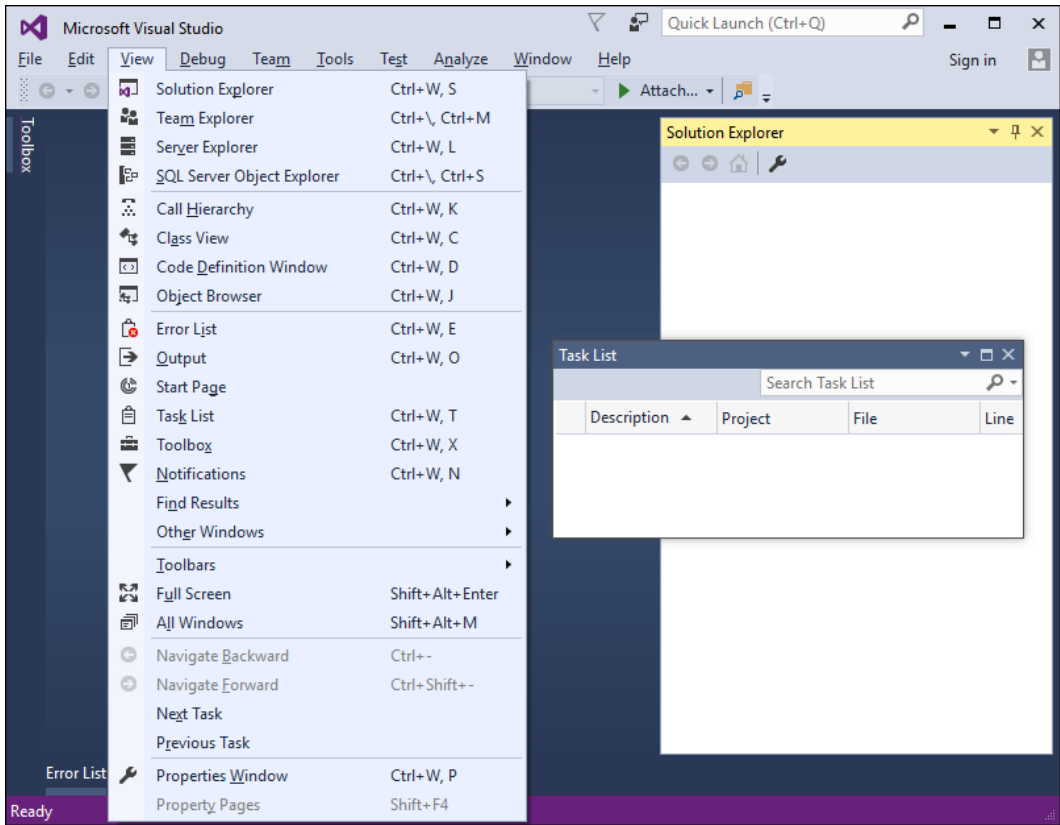
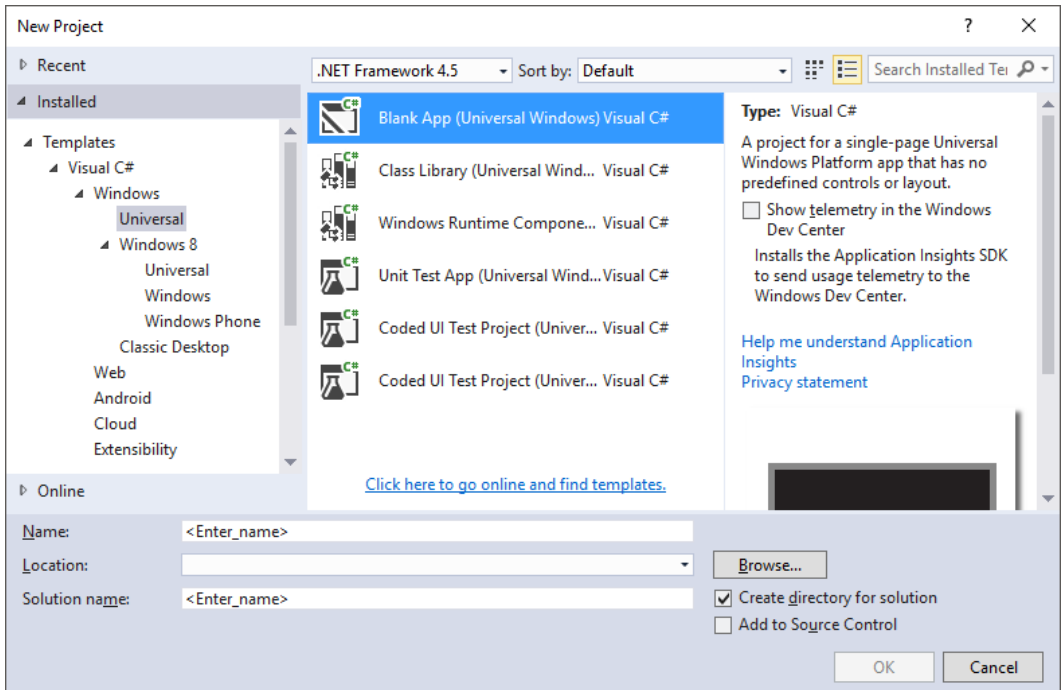
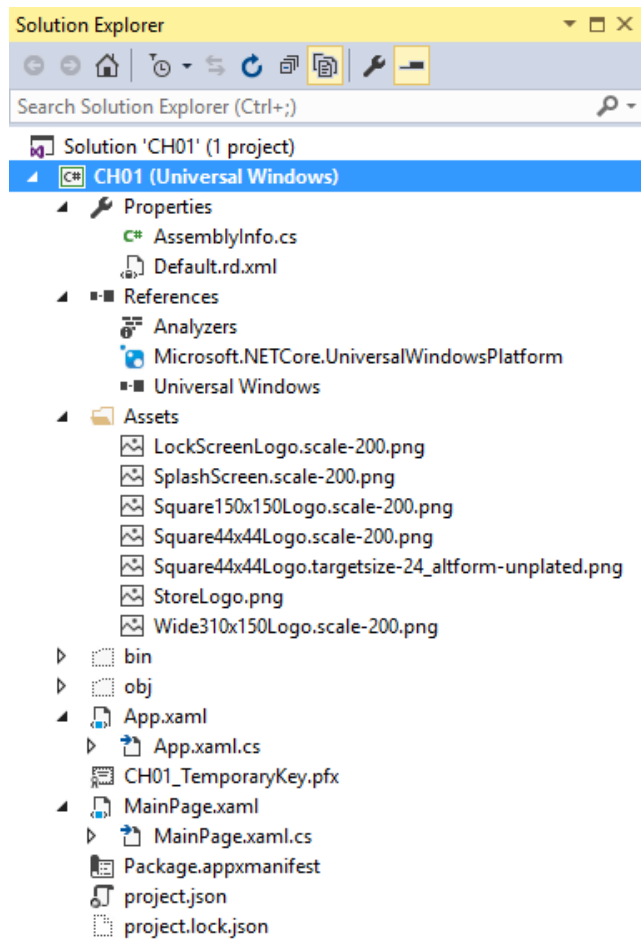


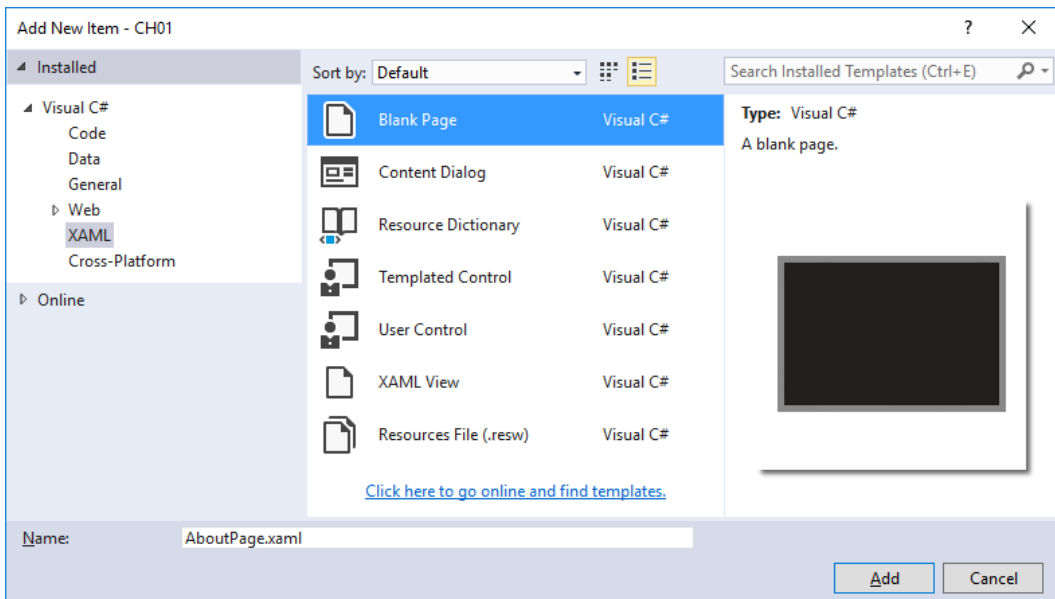
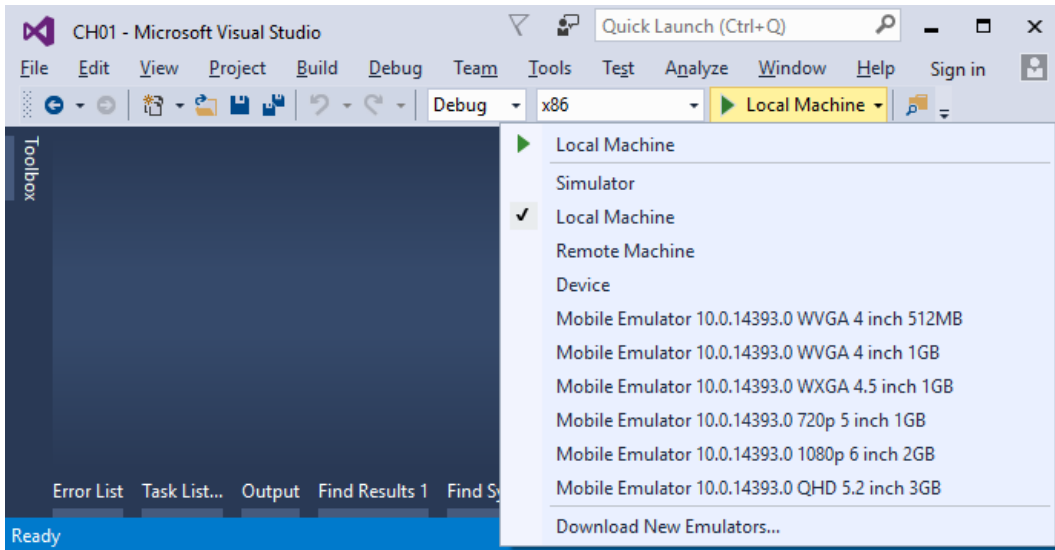
Getting Started

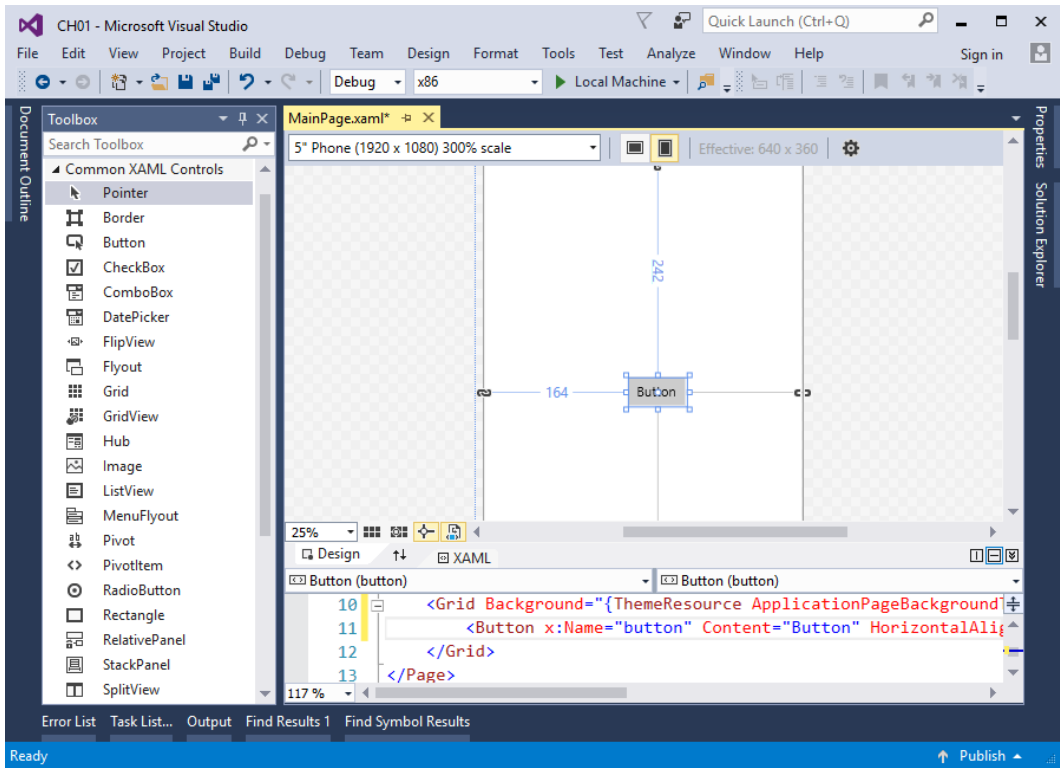


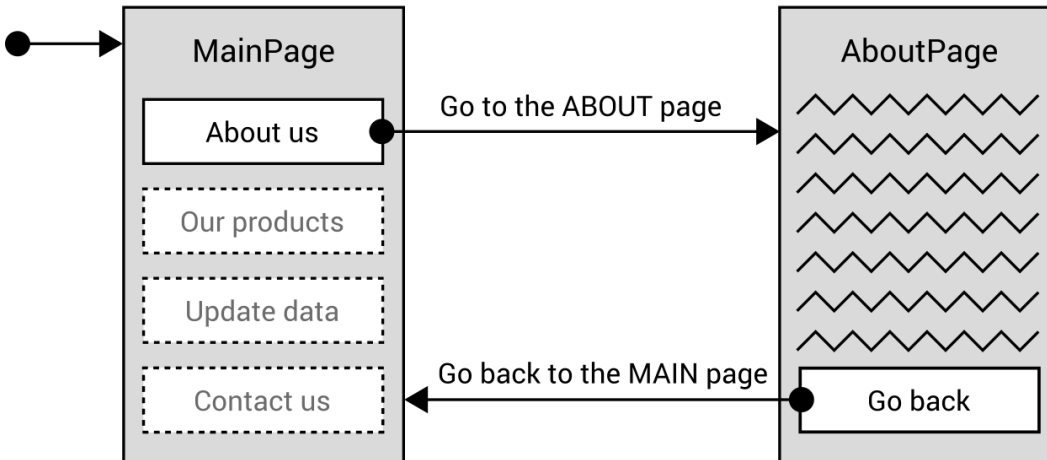
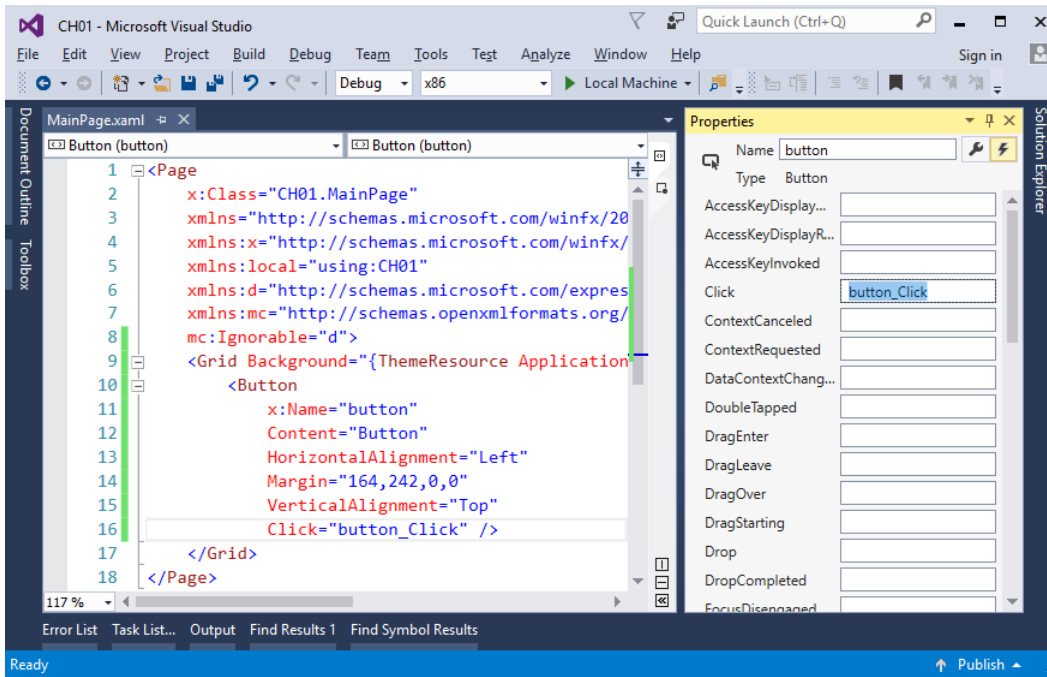


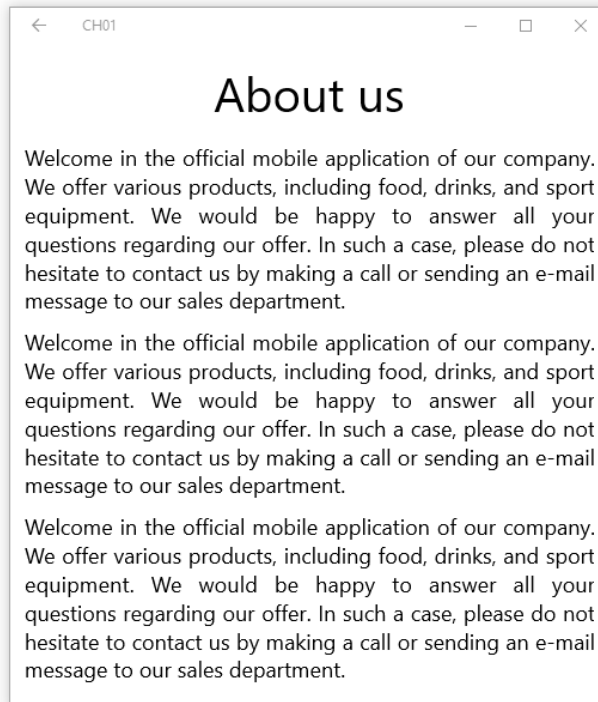
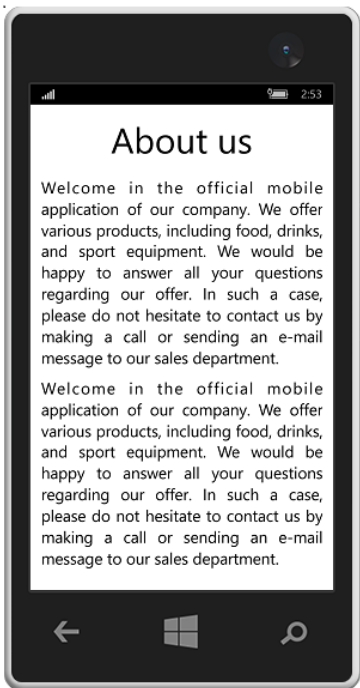
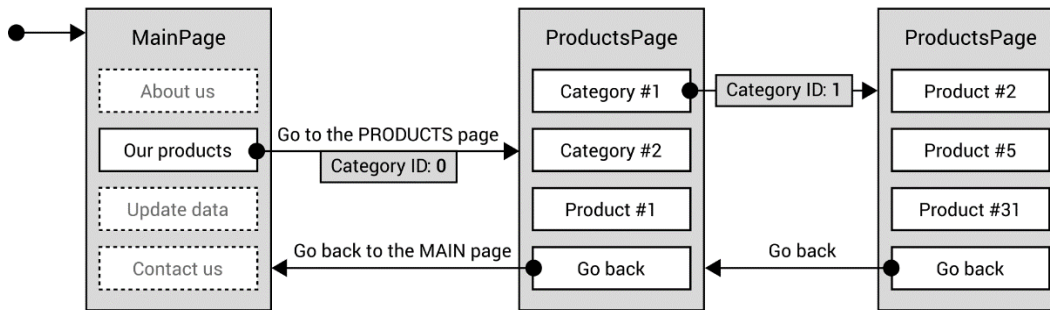


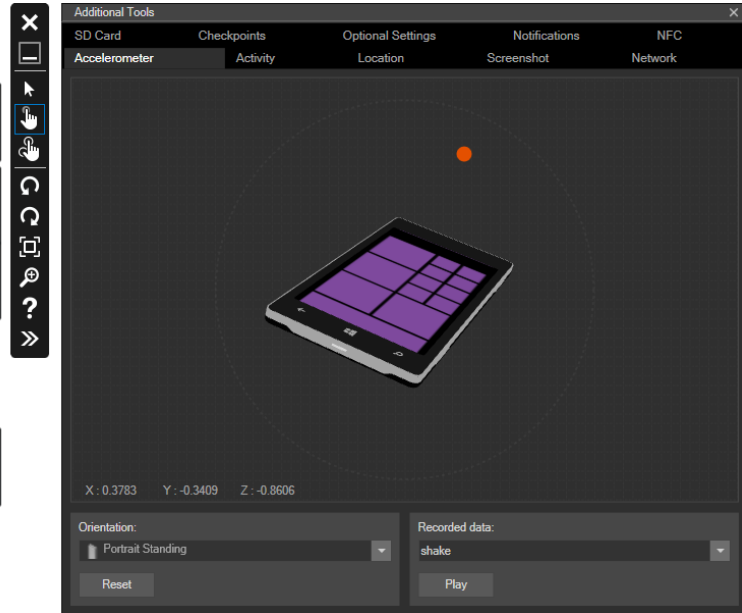
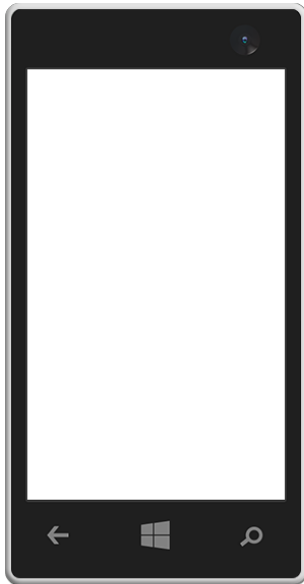
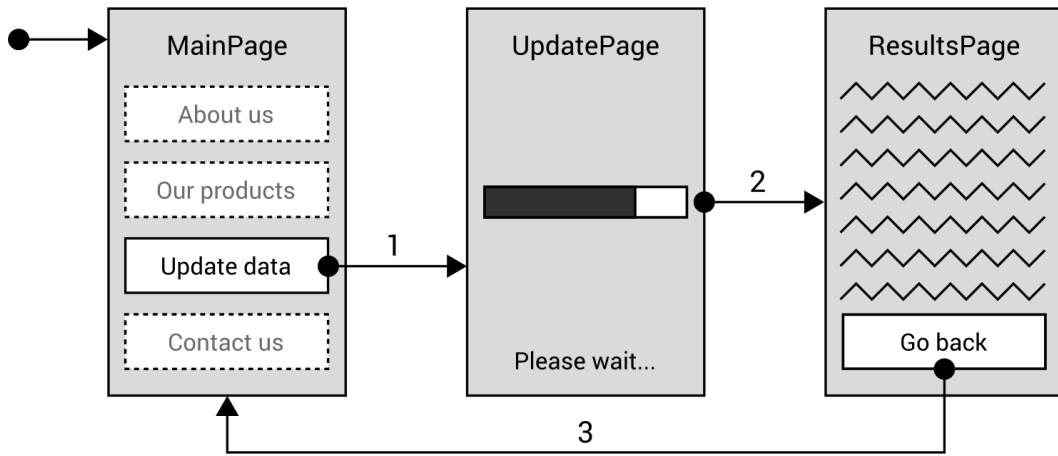












```
CH01 - ProductsPage.xaml.cs
ProductsPage.xaml.cs
CH01
CH01.ProductsPage
OnNavigatedTo(NavigationEventArgs e)
14 protected override void OnNavigatedTo(NavigationEventArgs e)
15 {
16     Dictionary<int, string> categoryNames = new Dictionary<int, string>()
17     {
18         [0] = "All products",
19         [1] = "Food & drinks",
20         [2] = "Sport",
21         [3] = "Hobby"
22     };
23     int categoryId = (int)e.Parameter;
24     string categoryName = "-";
25     if (categoryNames.ContainsKey(categoryId))
26     {
27         categoryName = categoryNames[categoryId];
28     }
29 }
30 }
31 }
```

```
CH01 - ProductsPage.xaml.cs
ProductsPage.xaml.cs
CH01
CH01.ProductsPage
OnNavigatedTo(NavigationEventArgs e)
21     [3] = "Hobby"
22 };
23 int categoryId = (int)e.Parameter;
24 string categoryName = "-";
25 if (categoryNames.ContainsKey(categoryId))
26 {
27     categoryName = categoryNames[categoryId];

```

categoryNames | Count = 4

- ▶ [0] {{0, All products}}
- ▶ [1] {{1, Food & drinks}}
- ▶ [2] {{2, Sport}}
- ▶ [3] {{3, Hobby}}
- ▶ Raw View

Location: ProductsPage.xaml.cs

Conditions

Conditional Expression: Is true | categoryId > 0 | Saved

Actions

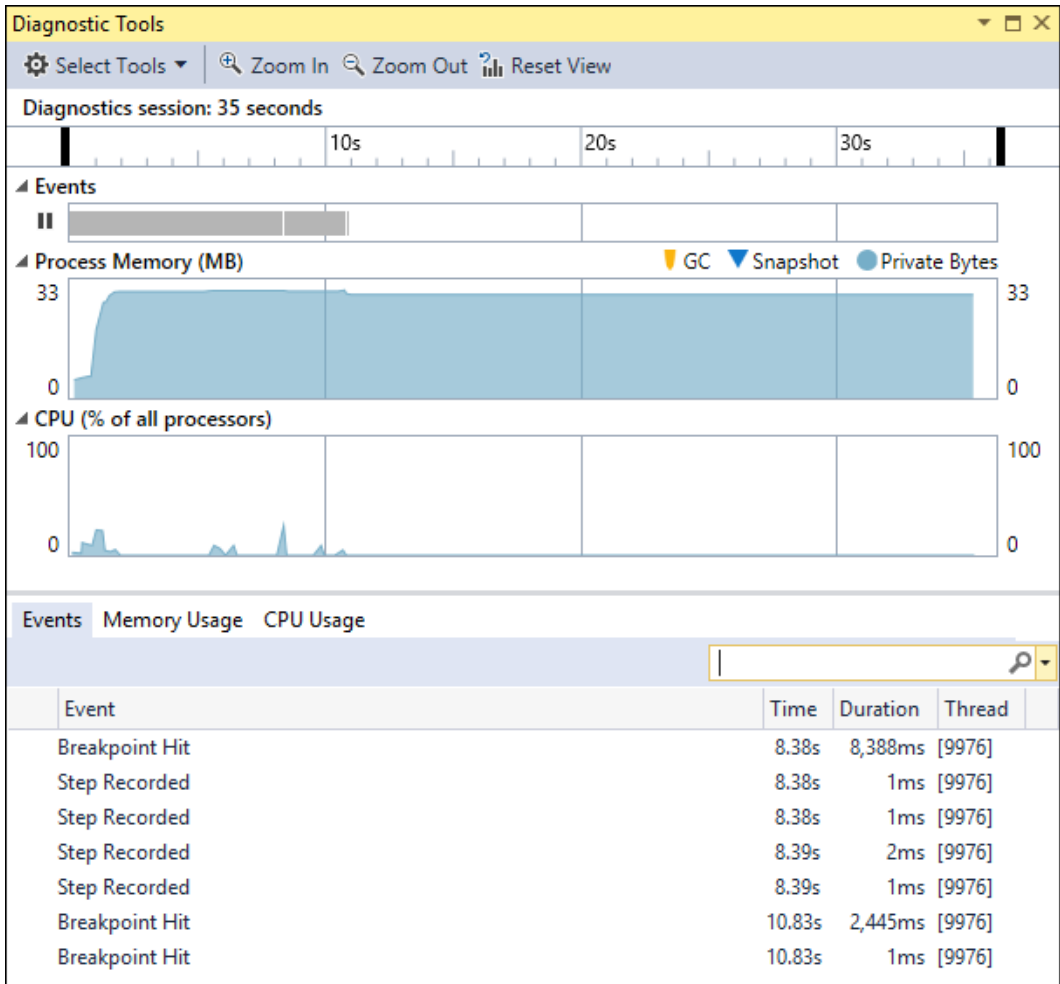
Close

```
18         [0] = "All products",
19         [1] = "Food & drinks",
20         [2] = "Sport",
21         [3] = "Hobby"
22     };
23     int categoryId = (int)e.Parameter;
24     string categoryName = "-";
25     if (categoryNames.ContainsKey(categoryId))
26     {
27         categoryName = categoryNames[categoryId];
28     }
29     string formattedText = $"Category #{categoryId} - {categoryName}.";
30 }
```

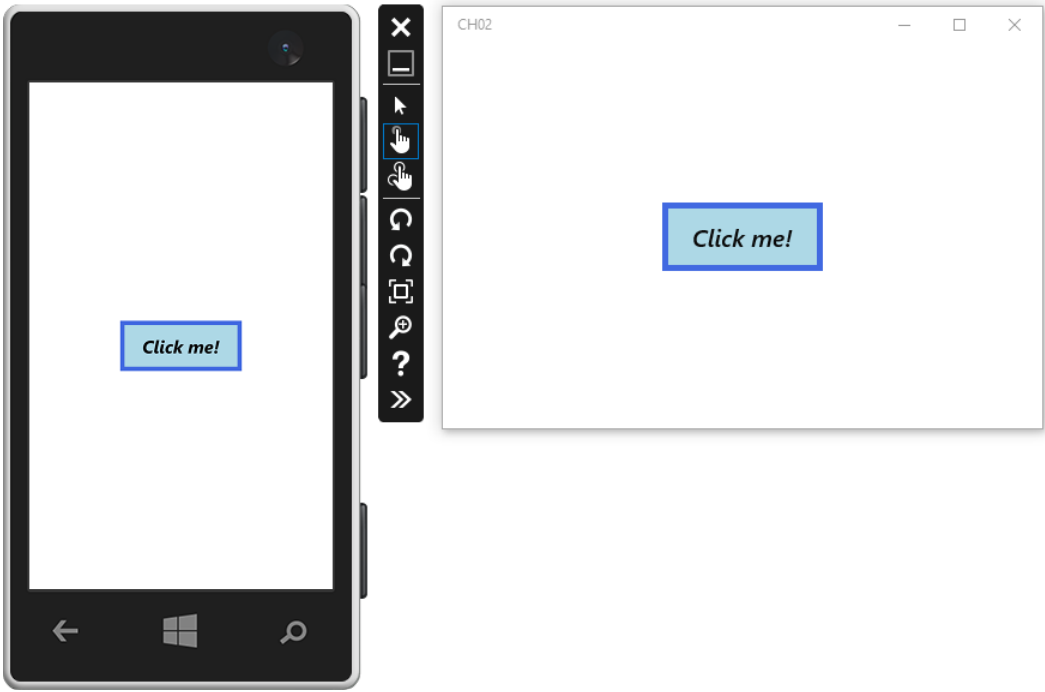
Visual Studio interface showing the code editor for `ProductsPage.xaml.cs`. The file explorer shows `CH01` and `CH01.ProductsPage`. The `OnNavigatedTo(NavigationEventArgs e)` method is selected. A tooltip for `(int)e.Parameter` shows the value `1`. A tooltip for `categoryName` shows the value `"Food & drinks"`. A tooltip for `formattedText` shows the value `"Category #1 - Food & drinks."`. The status bar shows `≤ 203ms elapsed`.

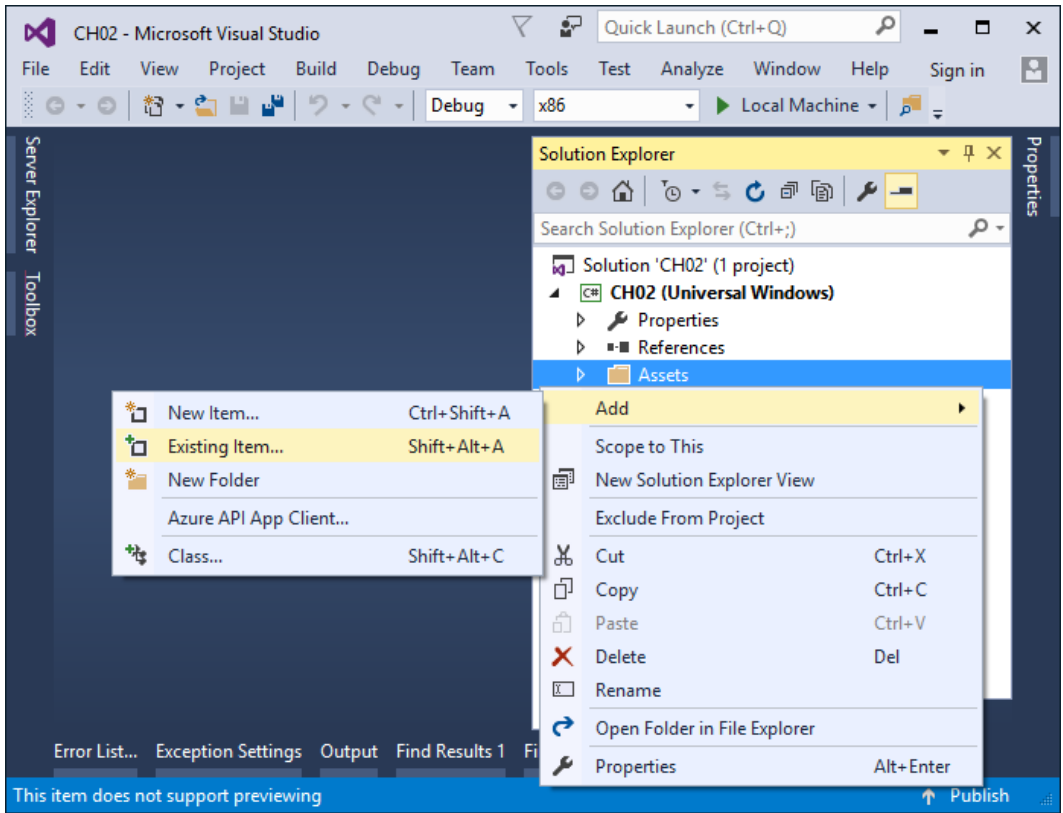
```
24     string categoryName = "-";
25     if (categoryNames.ContainsKey(categoryId))
26     {
27         categoryName = categoryNames[categoryId];
28     }
29     string formattedText = $"Category #{categoryId} - {categoryName}.";
30 }
```

Visual Studio interface in debug mode. The `OnNavigatedTo(NavigationEventArgs e)` method is selected. A tooltip for `formattedText` shows the value `"Category #1 - Food & drinks."`. The status bar shows `≤ 203ms elapsed`. The Immediate Window shows the value of `formattedText.Length` as `28` and `formattedText.ToUpper()` as `"CATEGORY #1 - FOOD & DRINKS."`. The status bar shows `Ready Ln 31 Col 9 Ch 9 INS`.

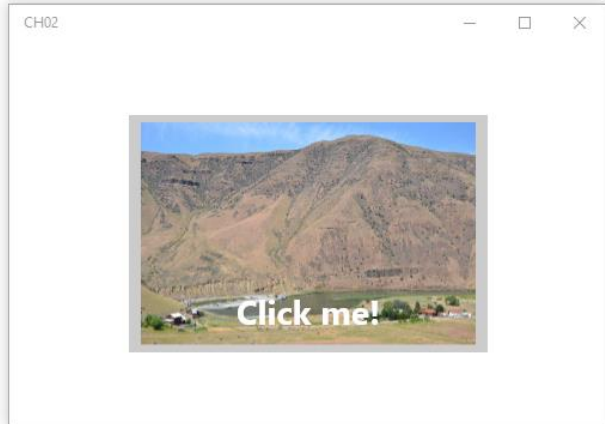


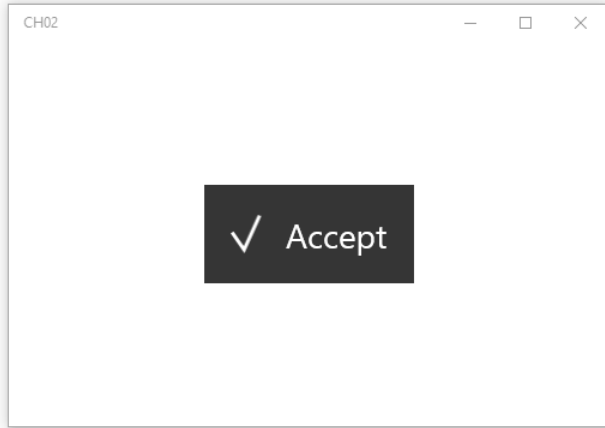
Designing a User Interface

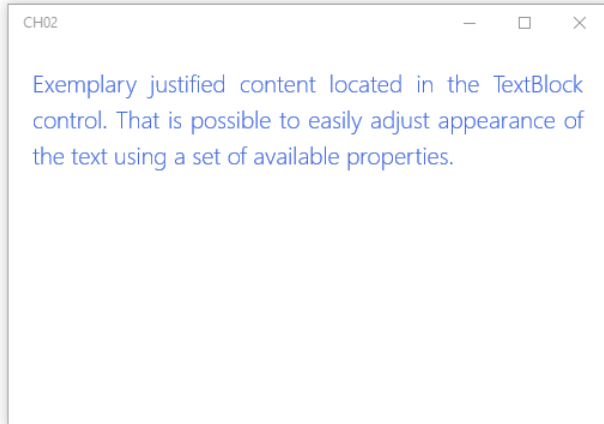
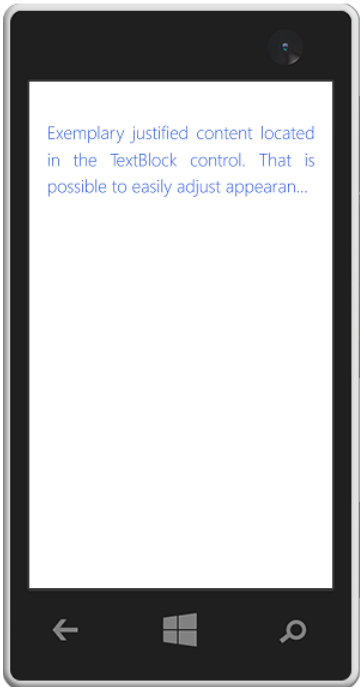


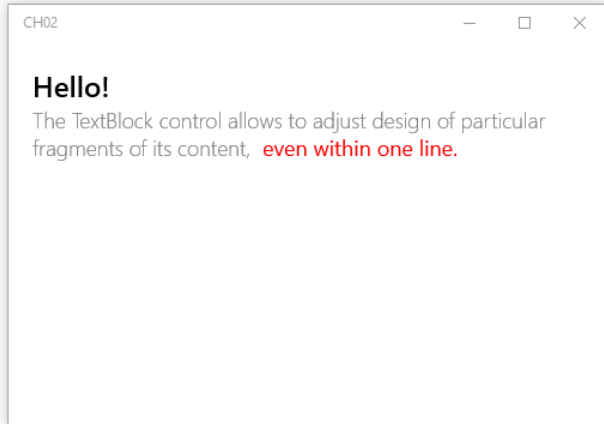
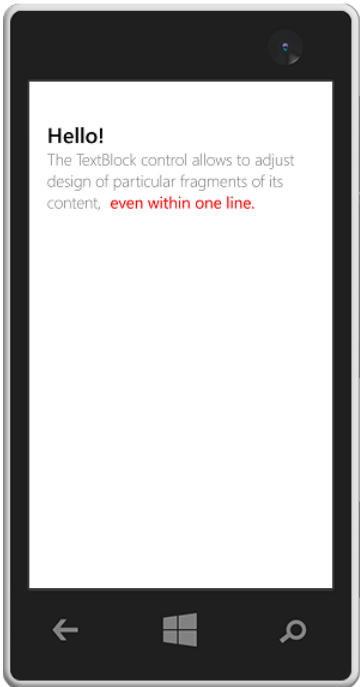


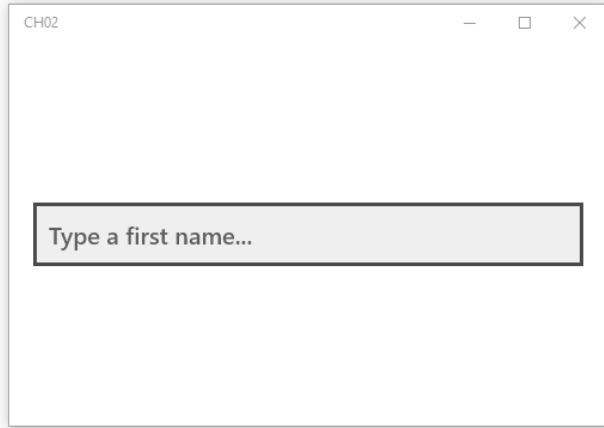
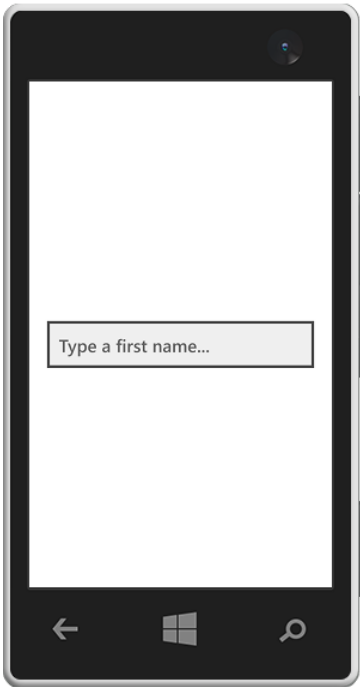


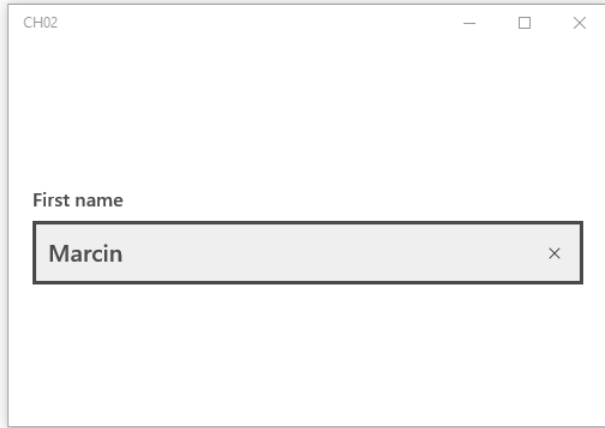


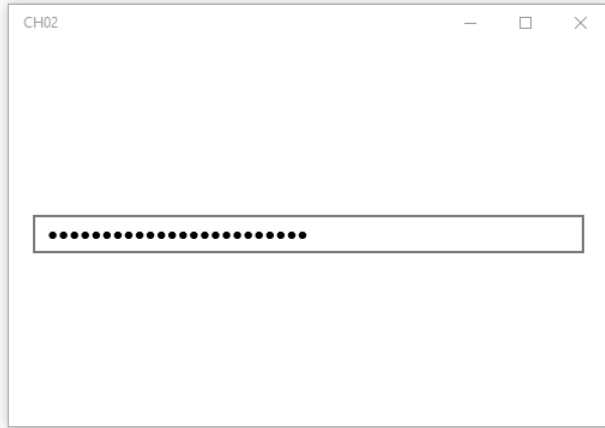


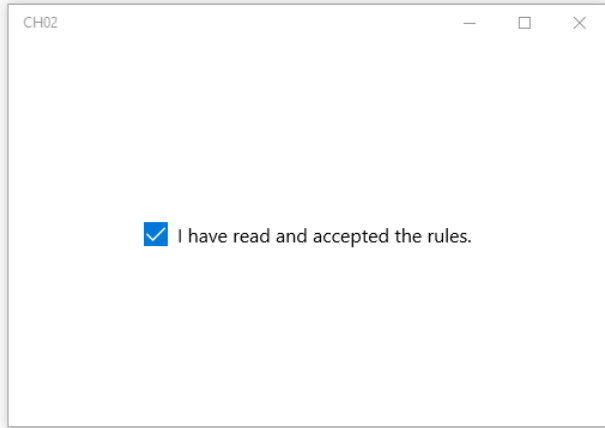
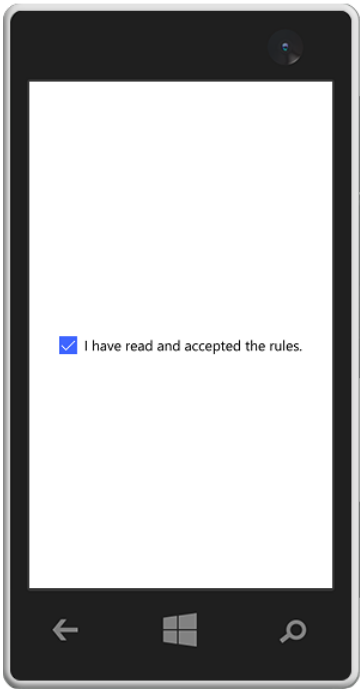


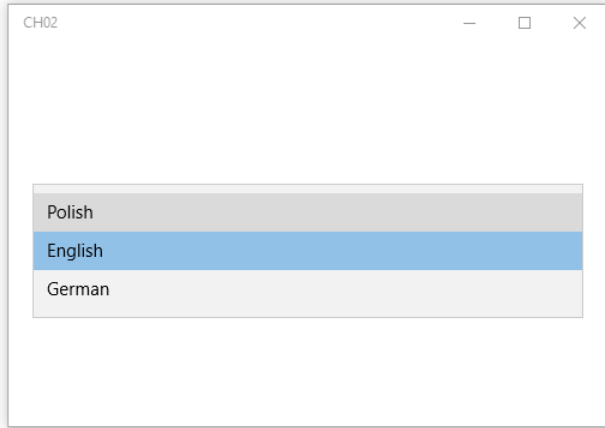
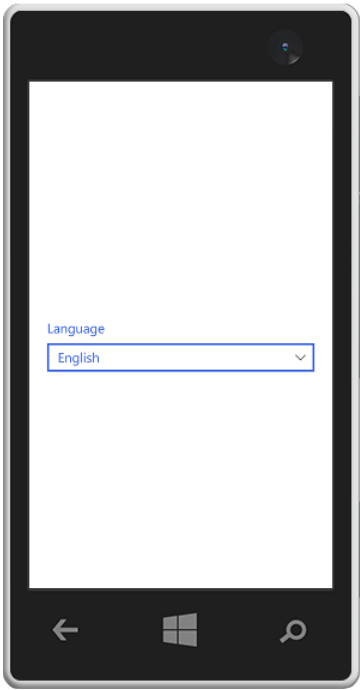


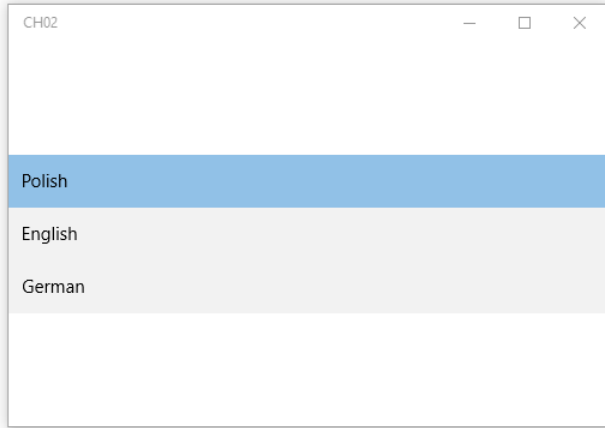
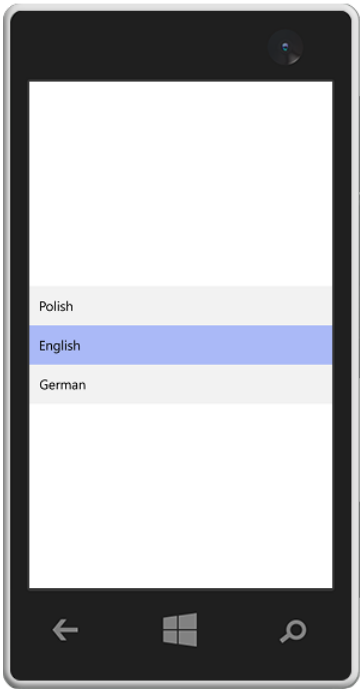


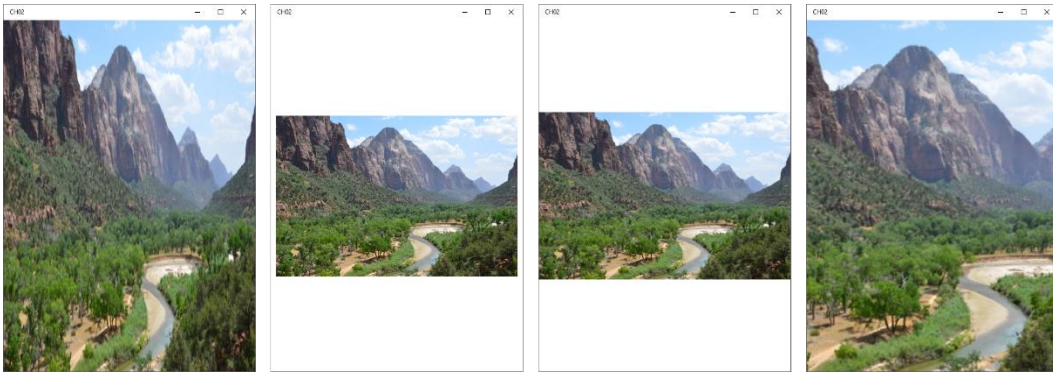


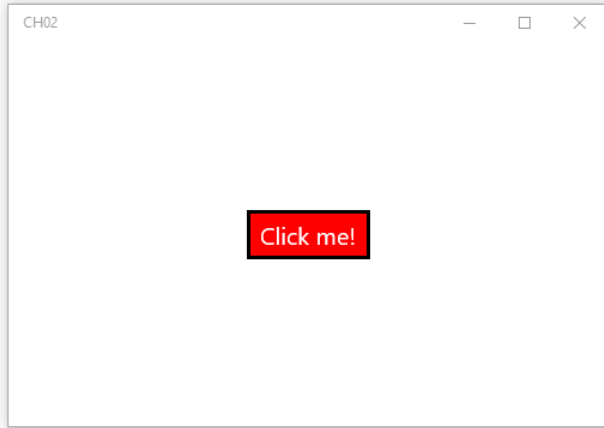


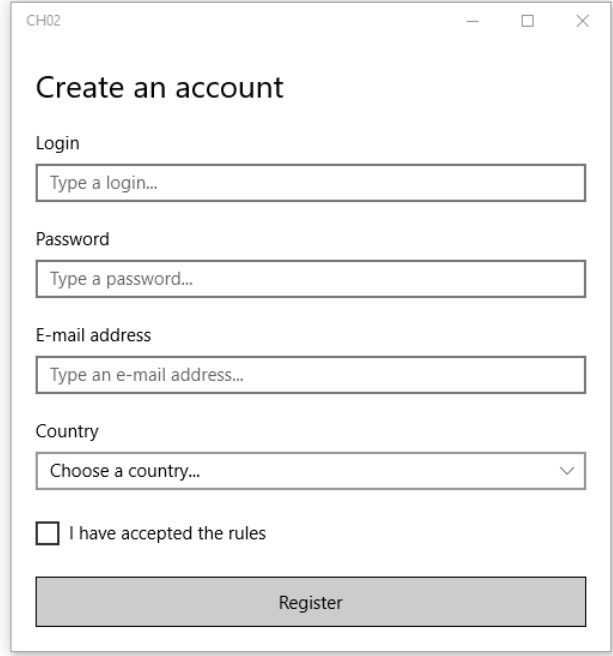


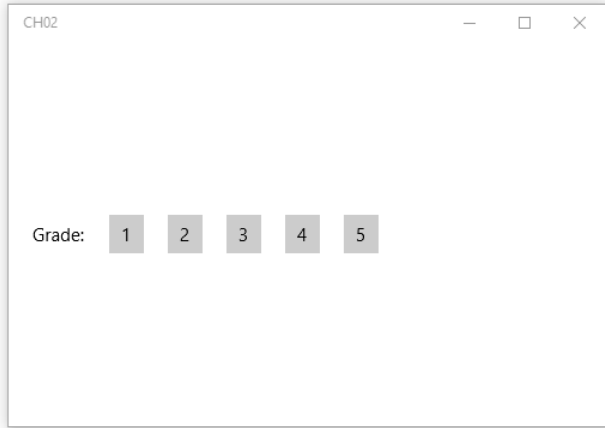




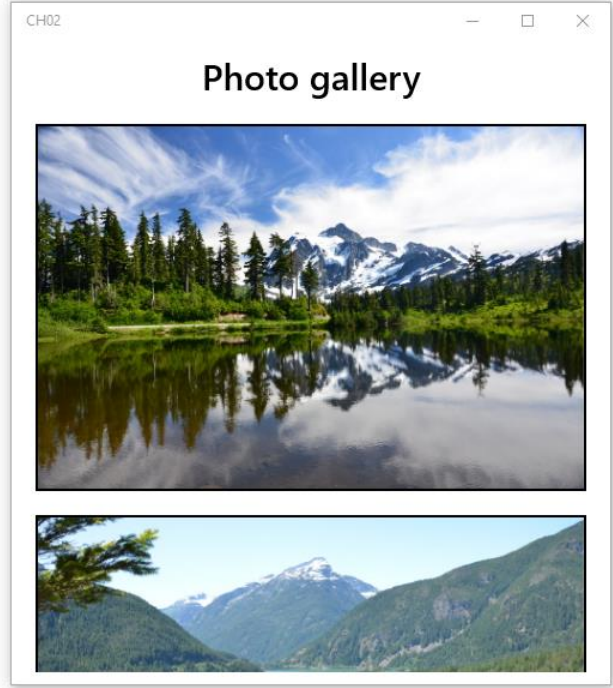


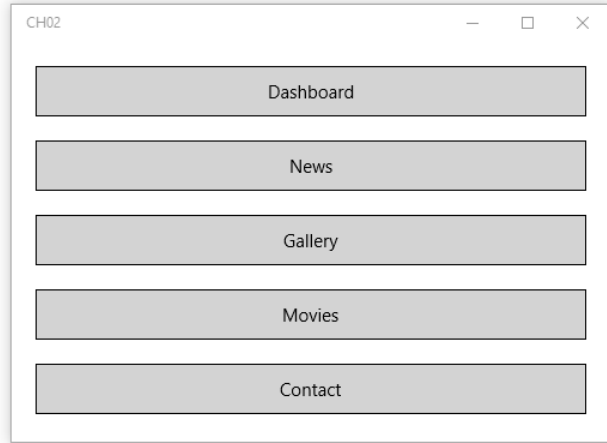


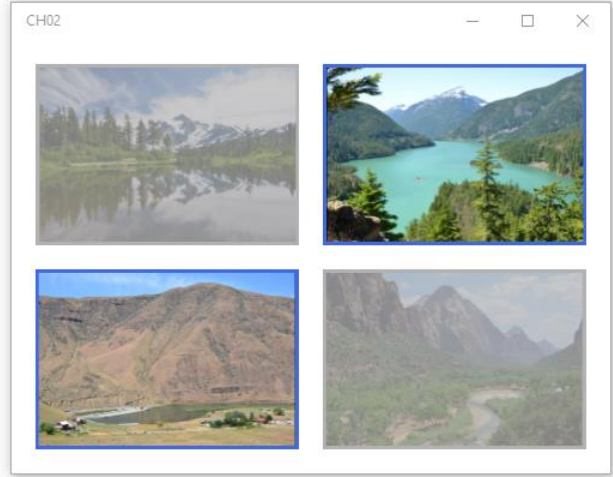
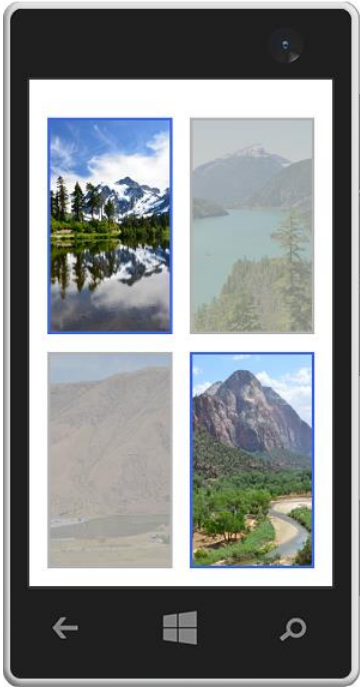




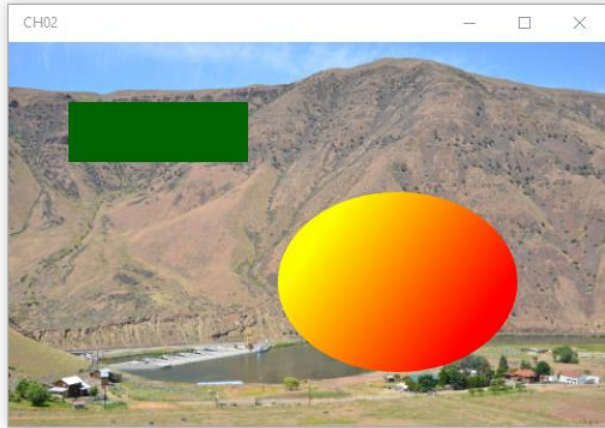


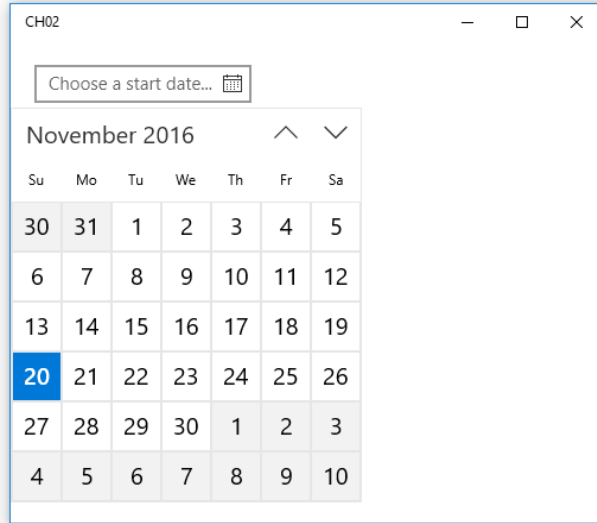
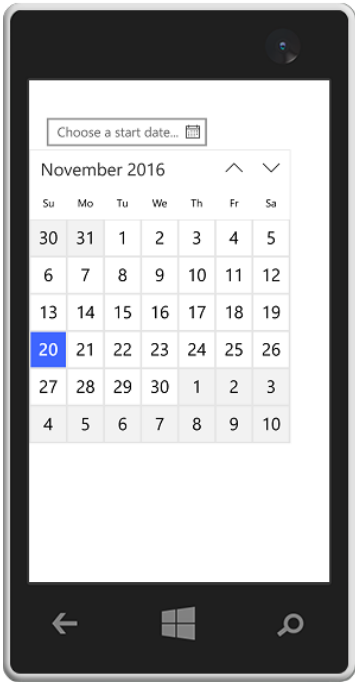












CH02

June	26	2016
------	----	------

CH02

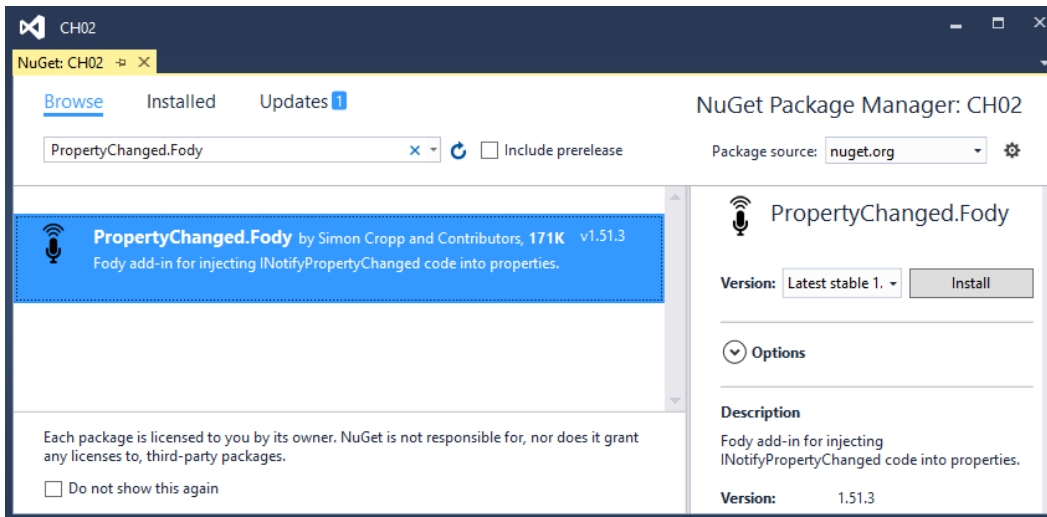
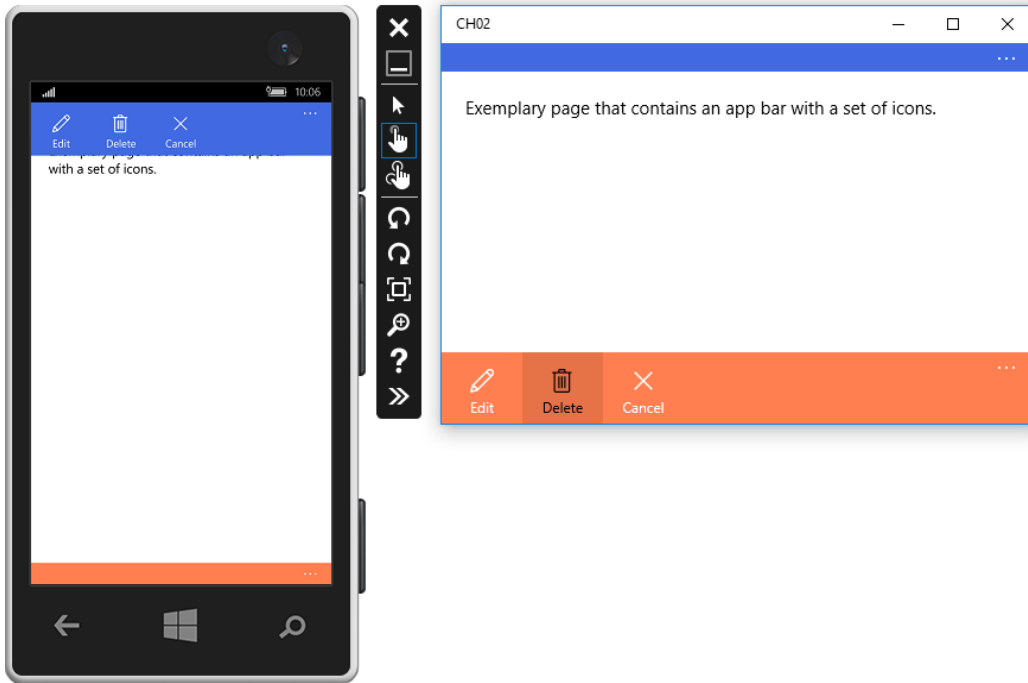
March	23	2013
April	24	2014
May	25	2015
June	26	2016
July	27	2017
August	28	2018
September	29	2019
✓		✗

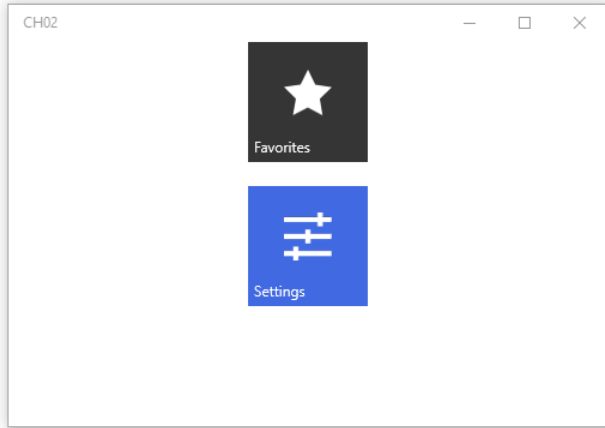
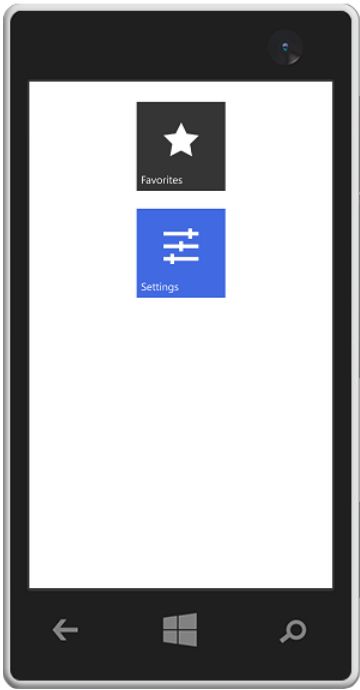
CH02

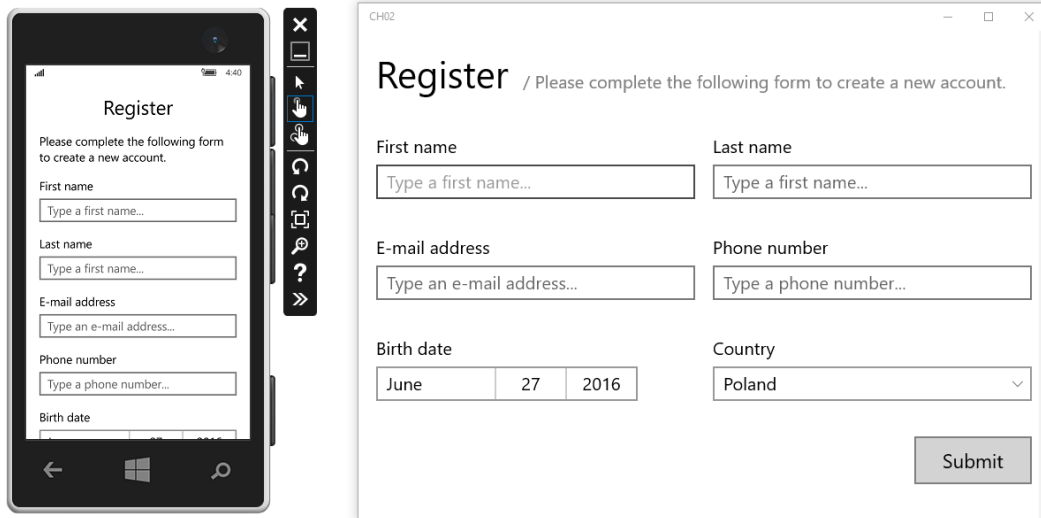
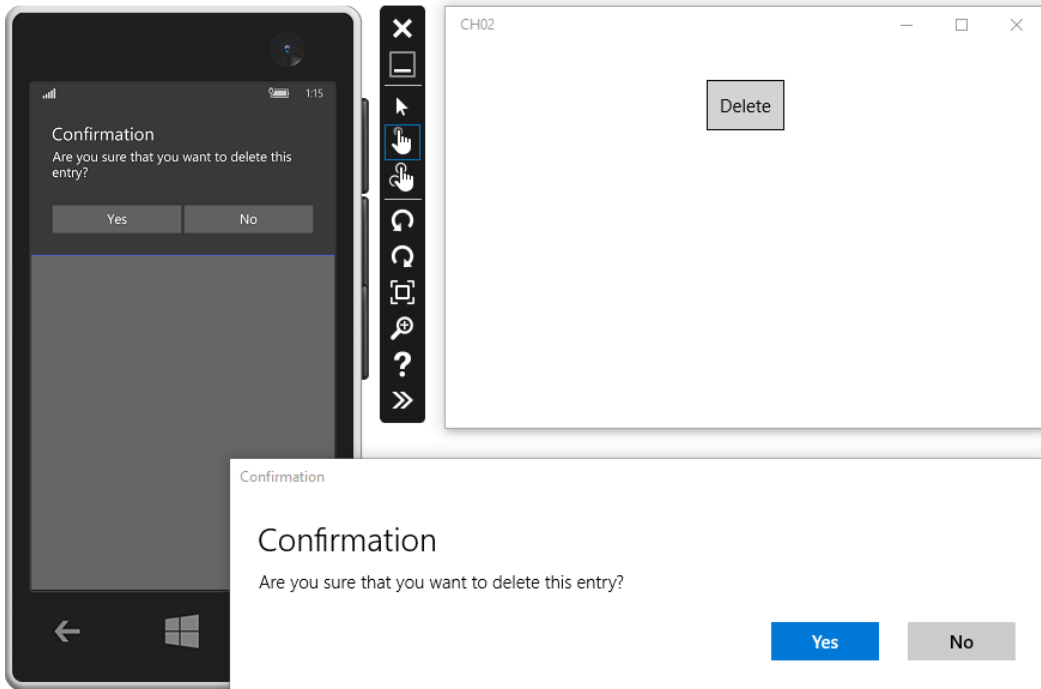
1	20	PM
---	----	----

CH02

10	17	
11	18	
12	19	AM
1	20	PM
2	21	
3	22	
4	23	
✓		✗





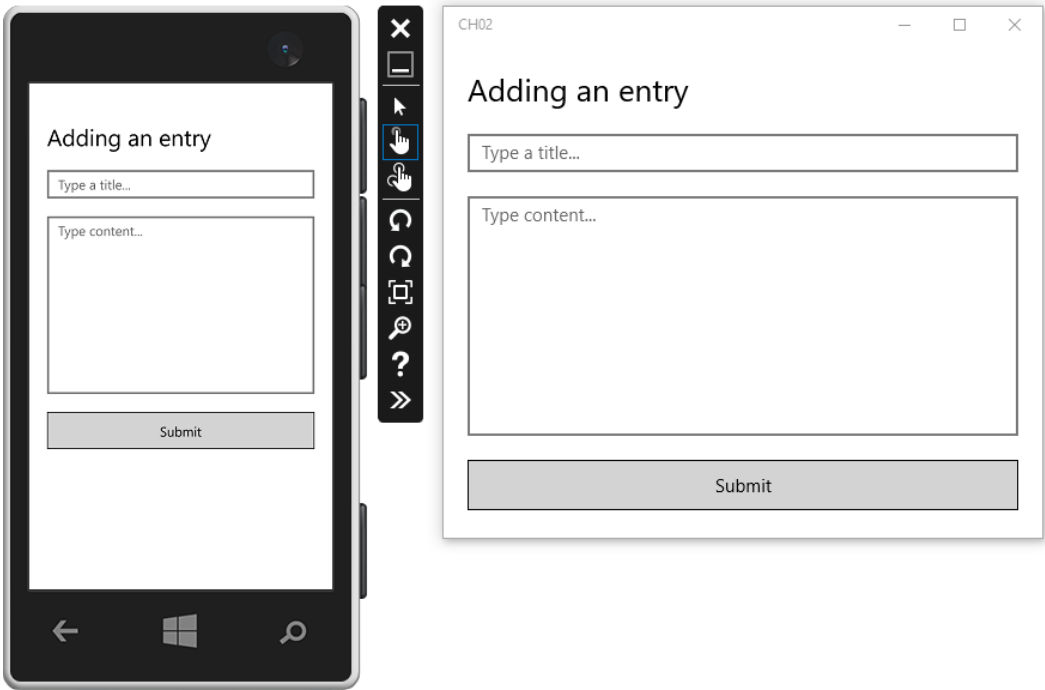


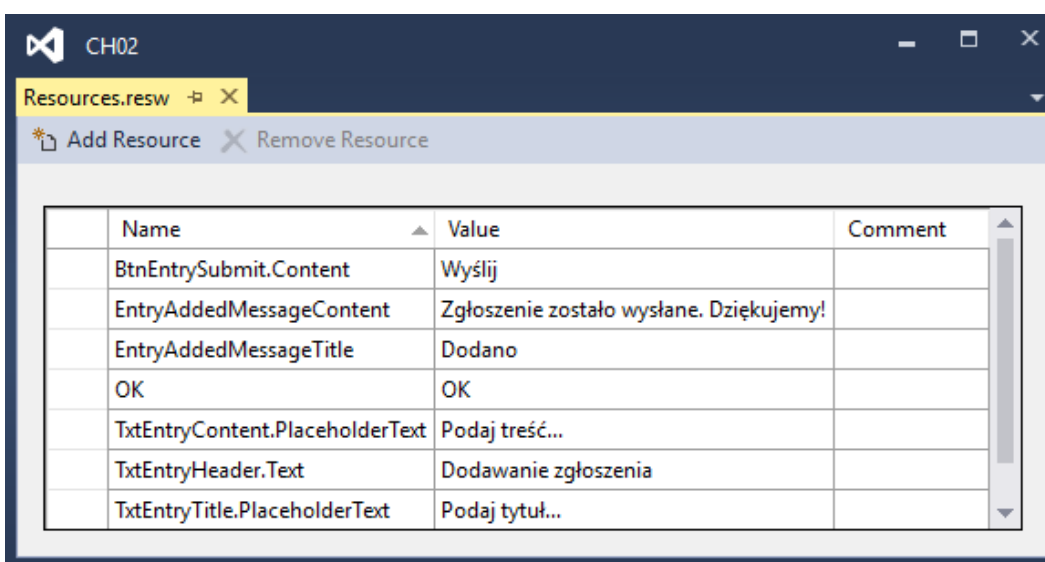
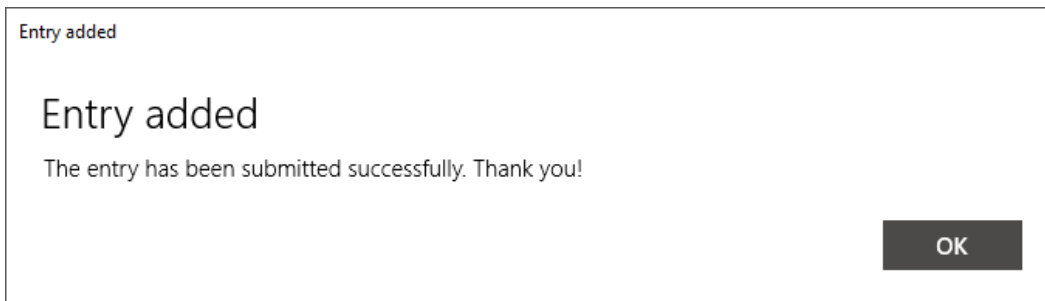
CH02

Resources.resw

Add Resource Remove Resource

	Name	Value	Comment
	TxtEntryHeader.Text	Adding an entry	
	TxtEntryTitle.PlaceholderText	Type a title...	
▶	TxtEntryContent.PlaceholderText	Type content...	
	BtnEntrySubmit.Content	Submit	





CH02

Adding an entry

Type a title...

Type content...

Submit

CH02

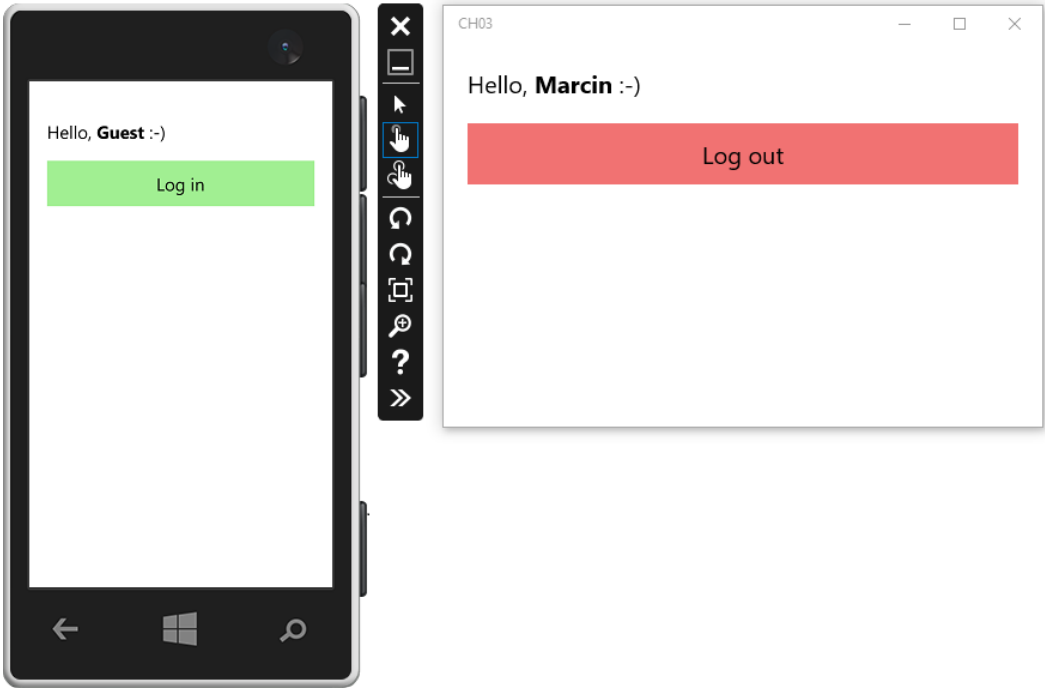
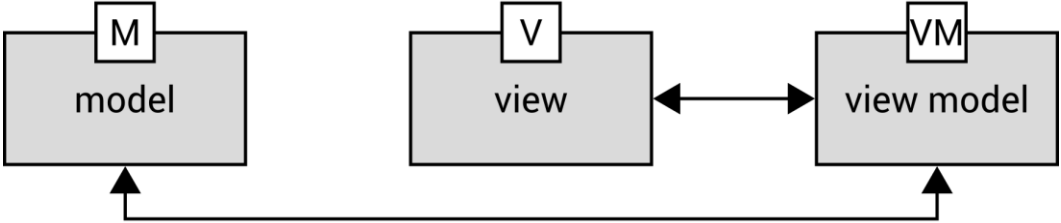
Dodawanie zgłoszenia

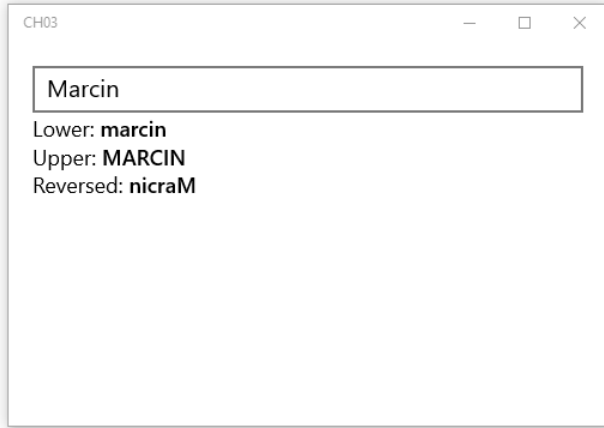
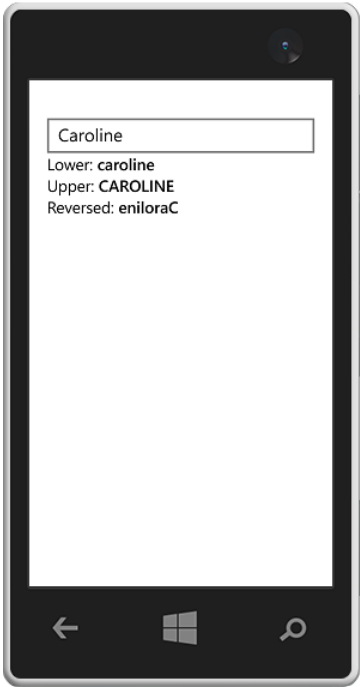
Podaj tytuł...

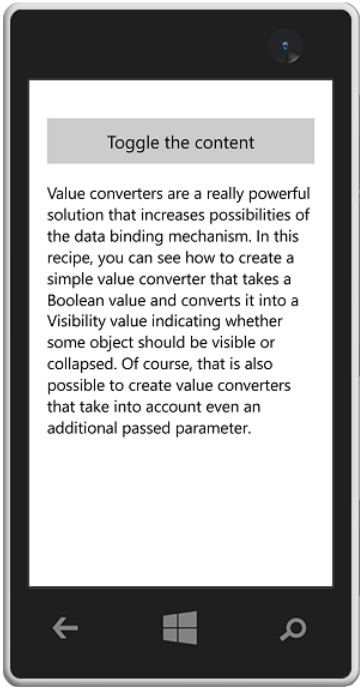
Podaj treść...

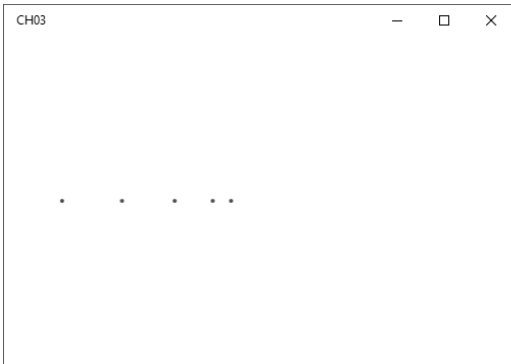
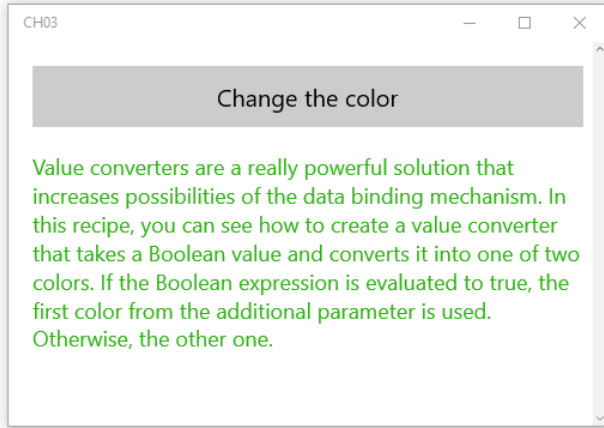
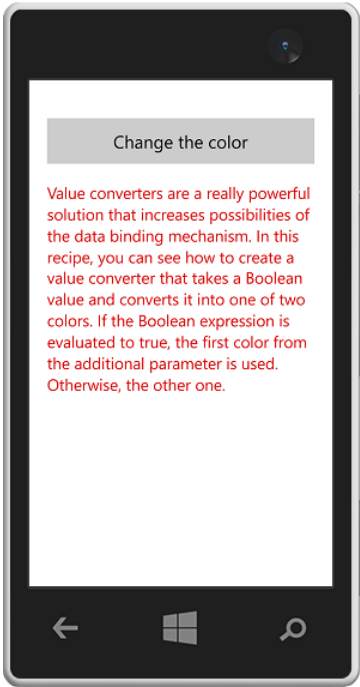
Wyślij

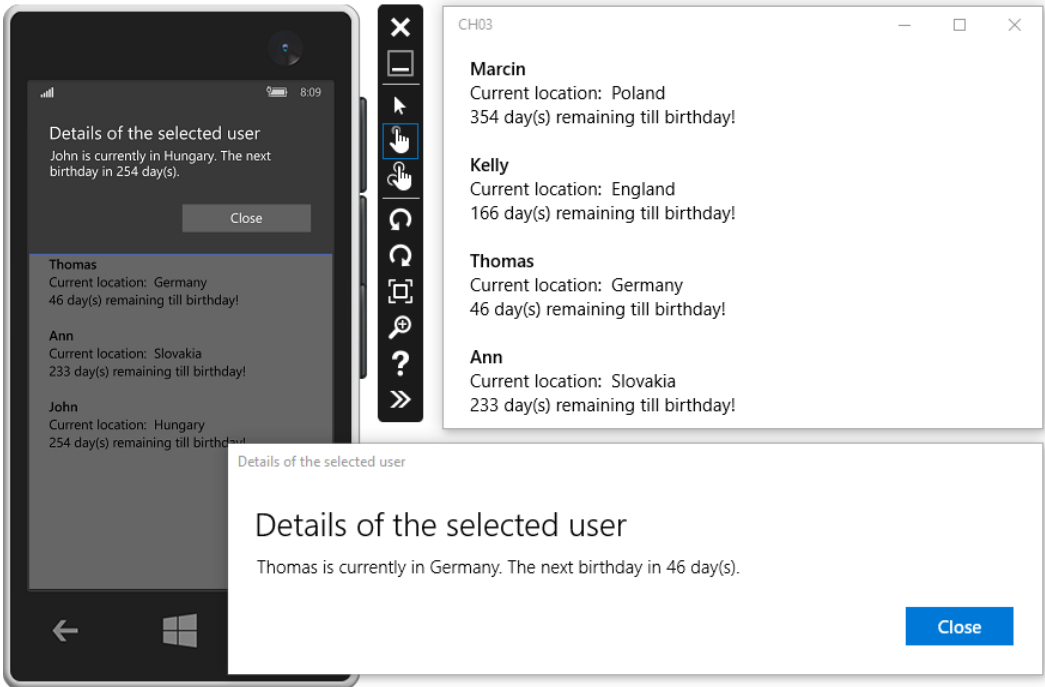
MVVM and Data Binding

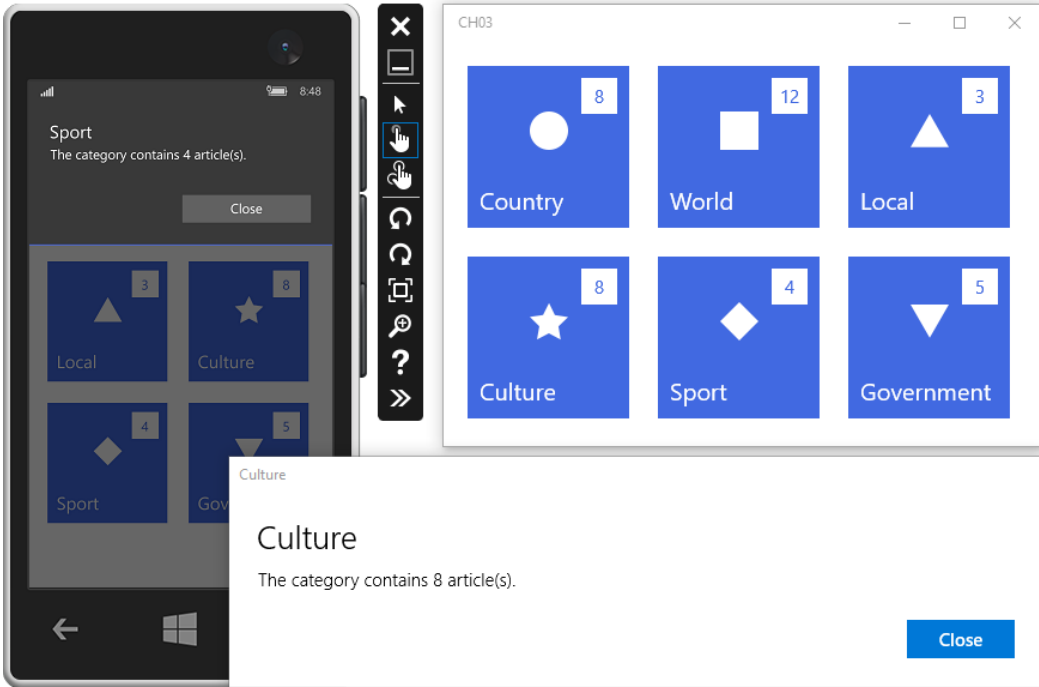


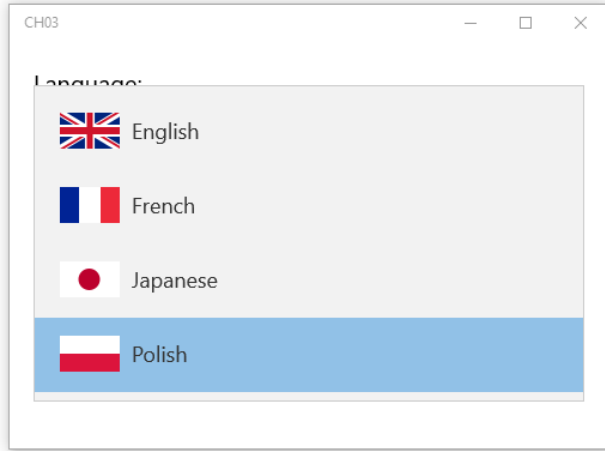


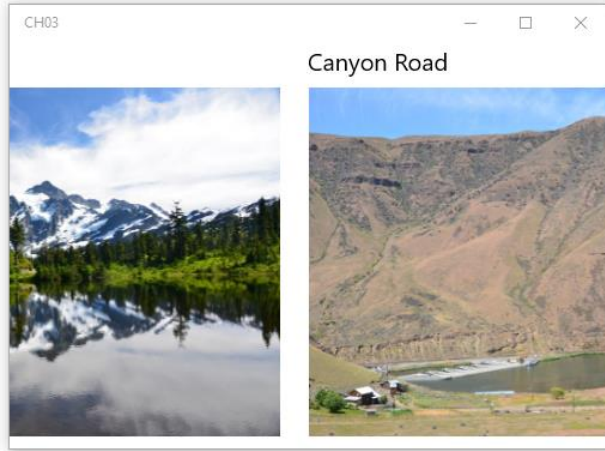




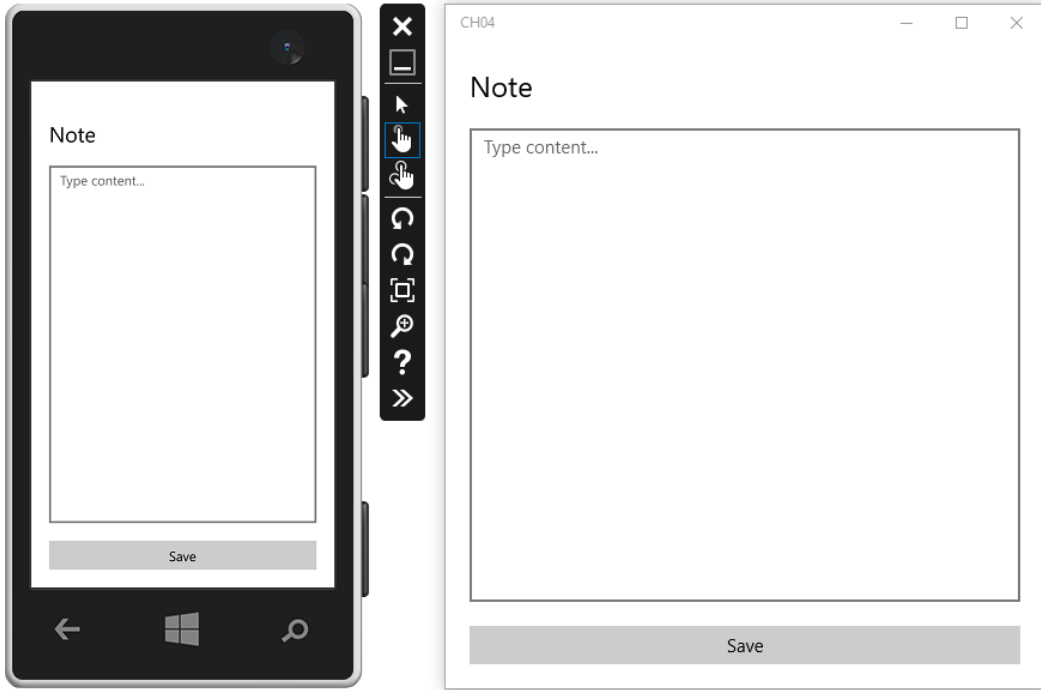


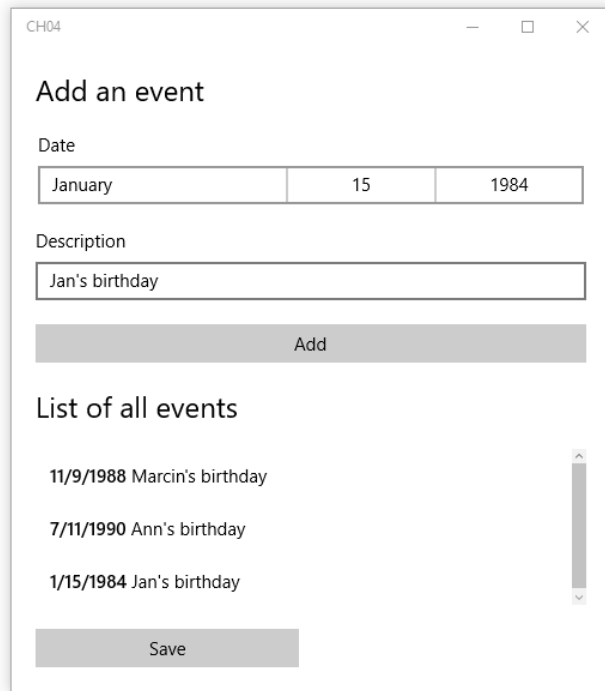
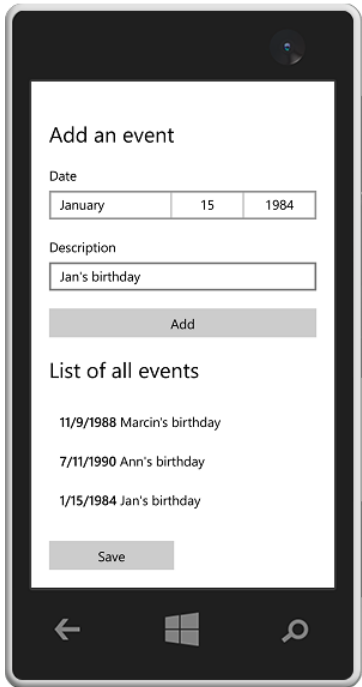


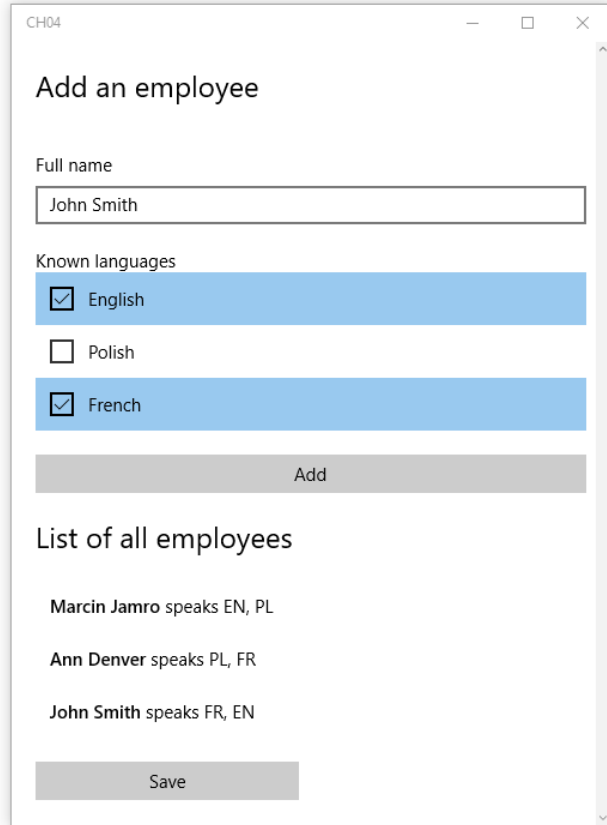
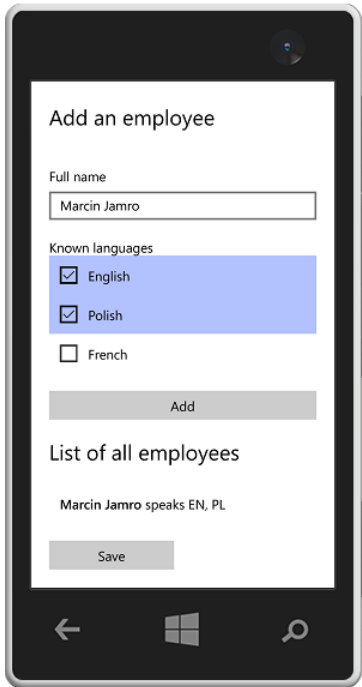


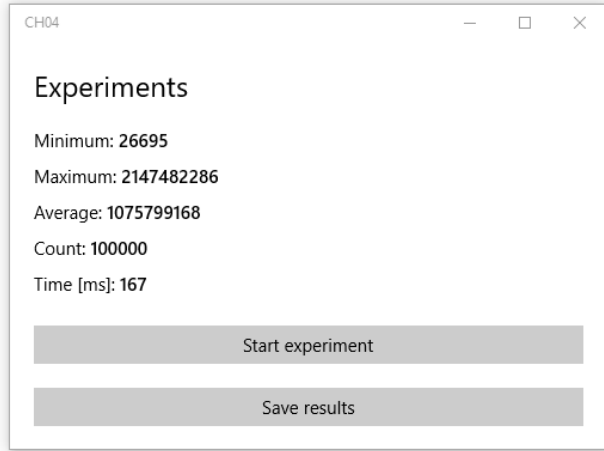
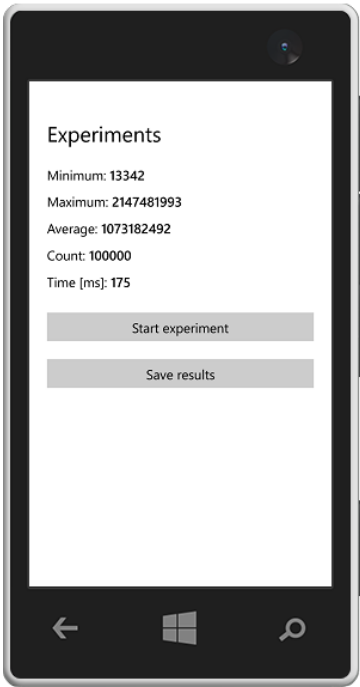


Data Storage









CH04

List of entries
Blog entry

Title

Content

Category


Add
Edit
Delete
Save the entry


Extensions and Updates


Sort by: Relevance


SQLite

- ▶ Installed
- ▶ Online
 - ▶ Visual Studio Gallery
 - ▶ Controls
 - ▶ Templates
 - ▶ Tools
 - ▶ Search Results
 - ▶ Samples Gallery
 - ▶ Updates (6)


 **dotConnect ADO.NET Data Provider for SQLite**
dotConnect for SQLite is a database connectivity solution built over ADO.NET architecture. With Entity Framework and LINQ to S...

 **SQLite ODBC Driver**
The SQLite ODBC Driver is a powerful tool that allows you to connect with live data from SQLite databases, directly from any...

 **SQL Server Compact/SQLite Toolbox**
SQL Server Compact/SQLite Toolbox add-in for Visual Studio. This add-in adds several features to help your embedded database de...

 **SQLite for Universal Windows Platform** Download

SQLite is a software library that implements a self-contained, serverless, zero-configuration, tr...

 **SQLite for Windows Runtime**

1 2 ▶

Created by: SQLite Development Team


Version: 3.13.0

Downloads: 46416

Rating: ★★★★★ (10 Votes)

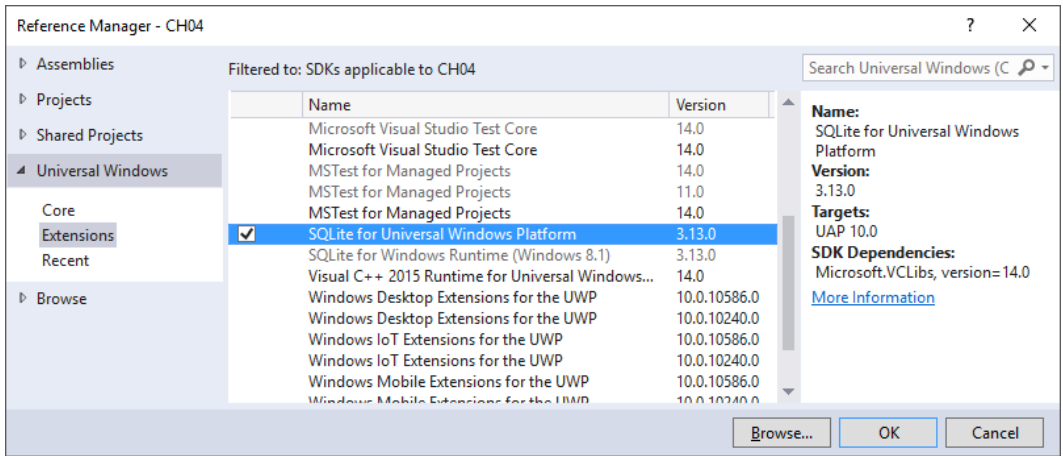
[More Information](#)

[Report Extension to Microsoft](#)

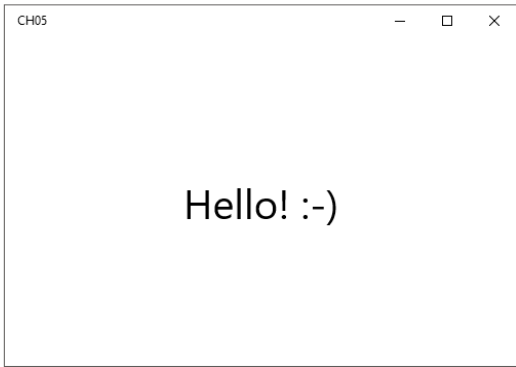
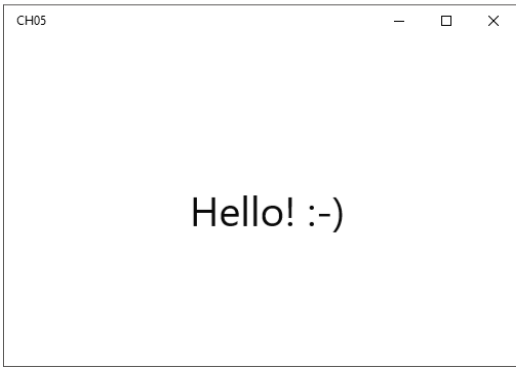
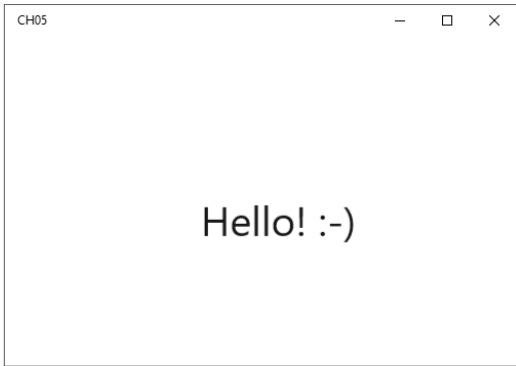
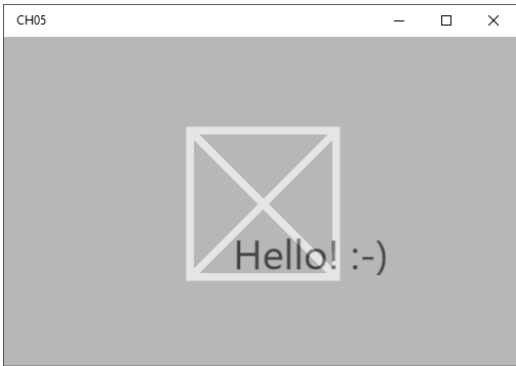
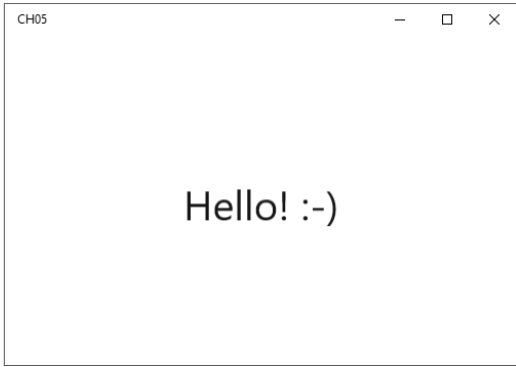
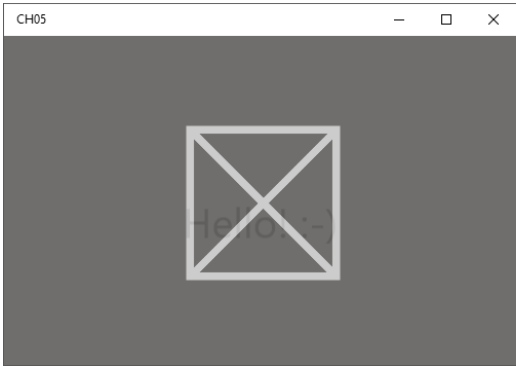


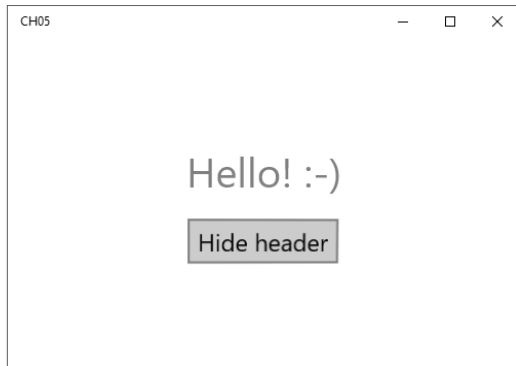
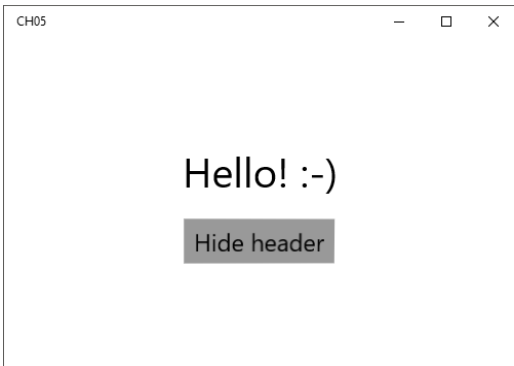
Change your Extensions and Updates settings

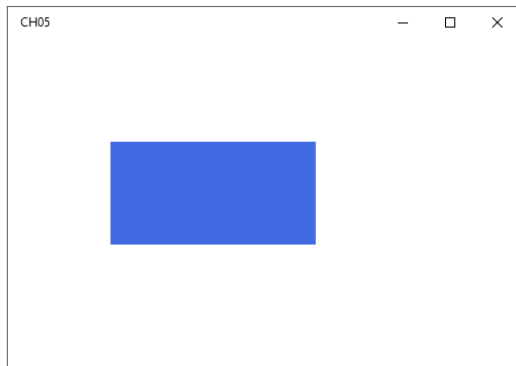
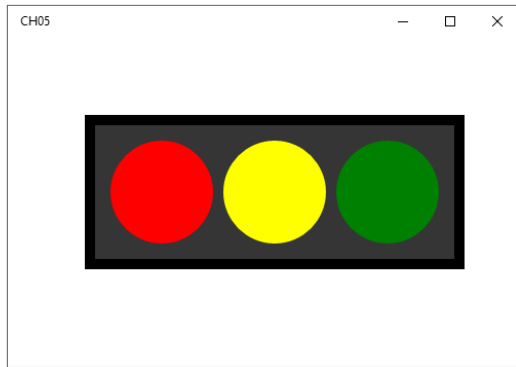
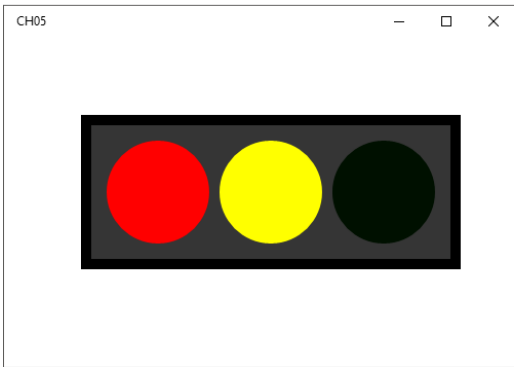
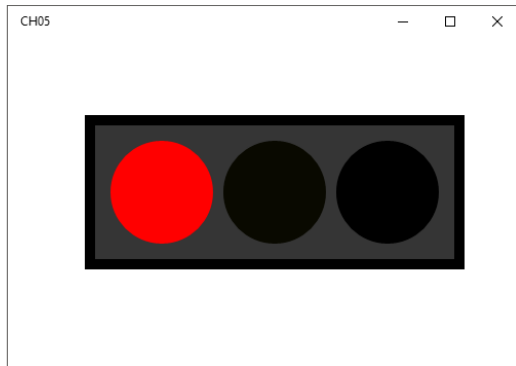
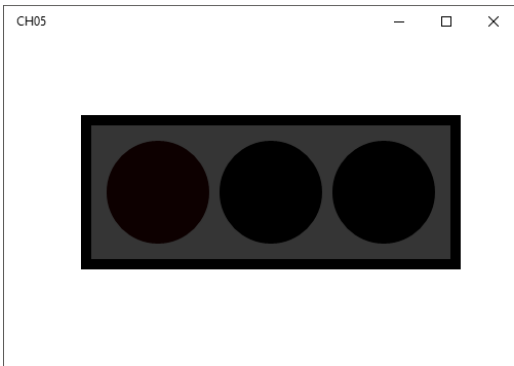
Close

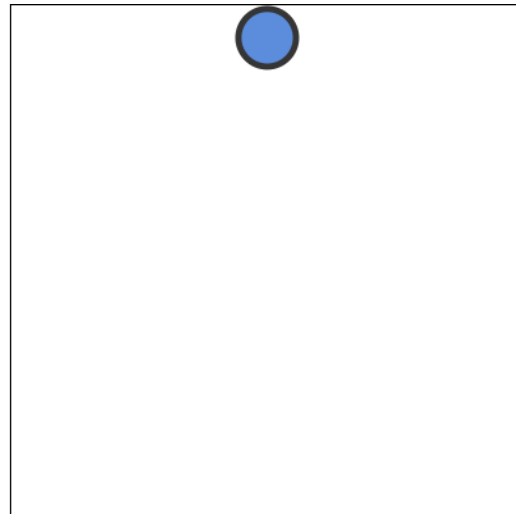
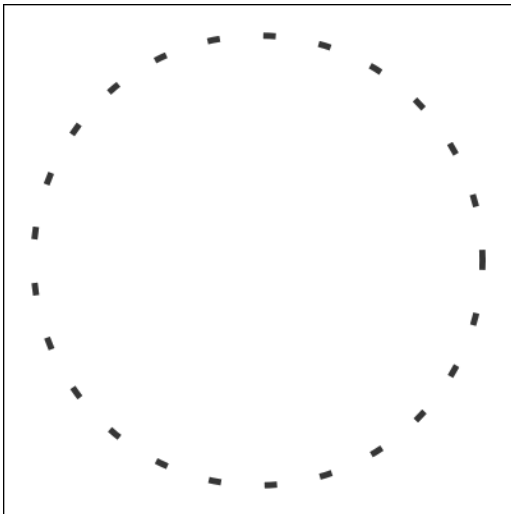
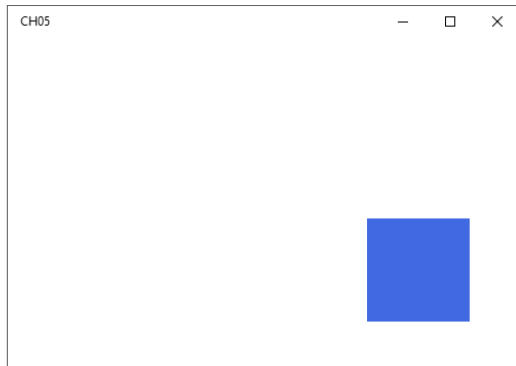
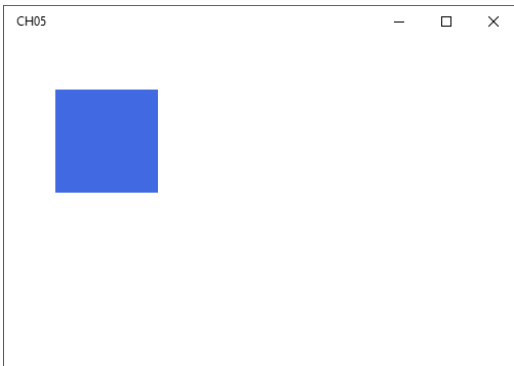


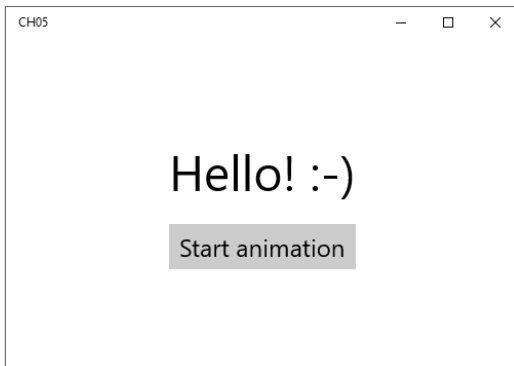
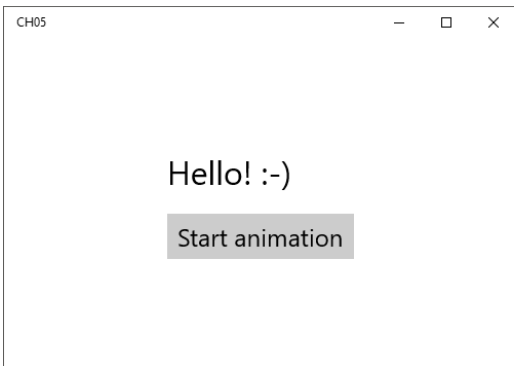
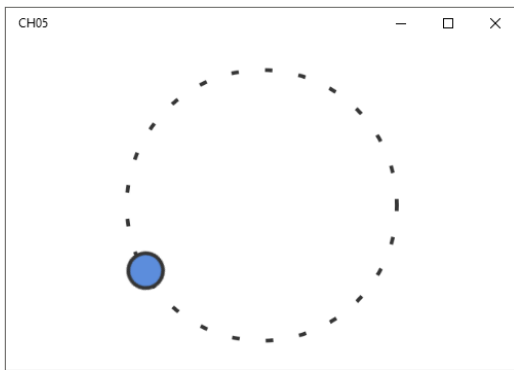
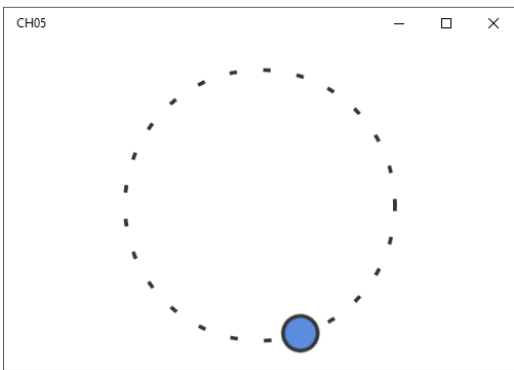
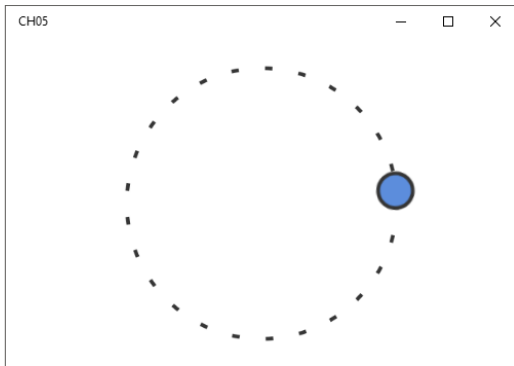
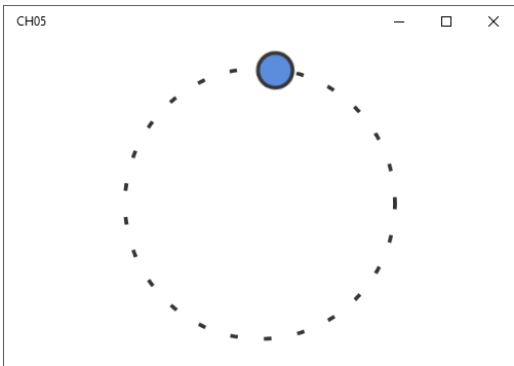
Animations and Graphics





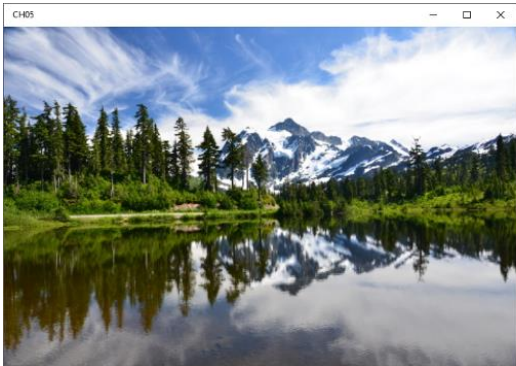
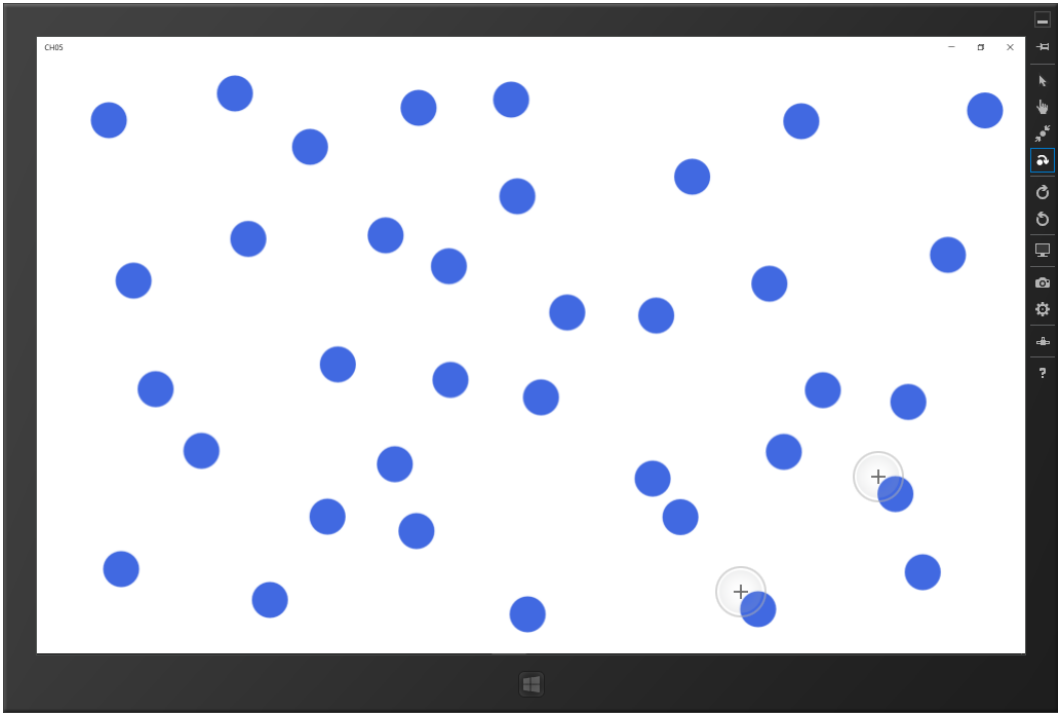


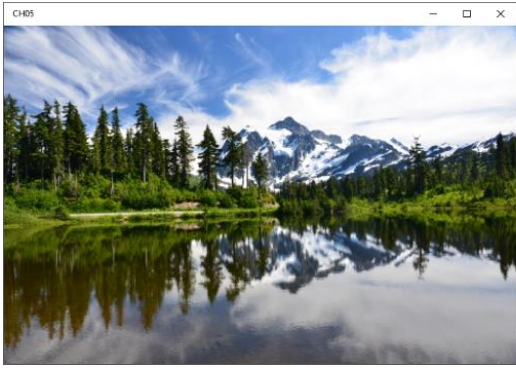
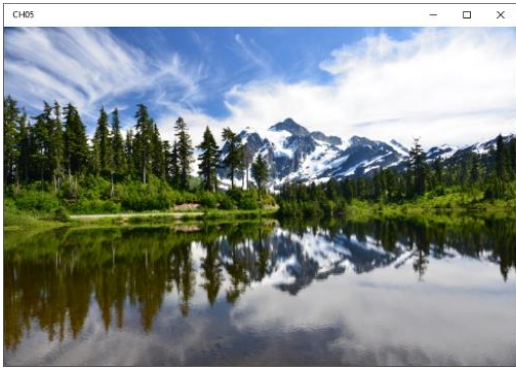


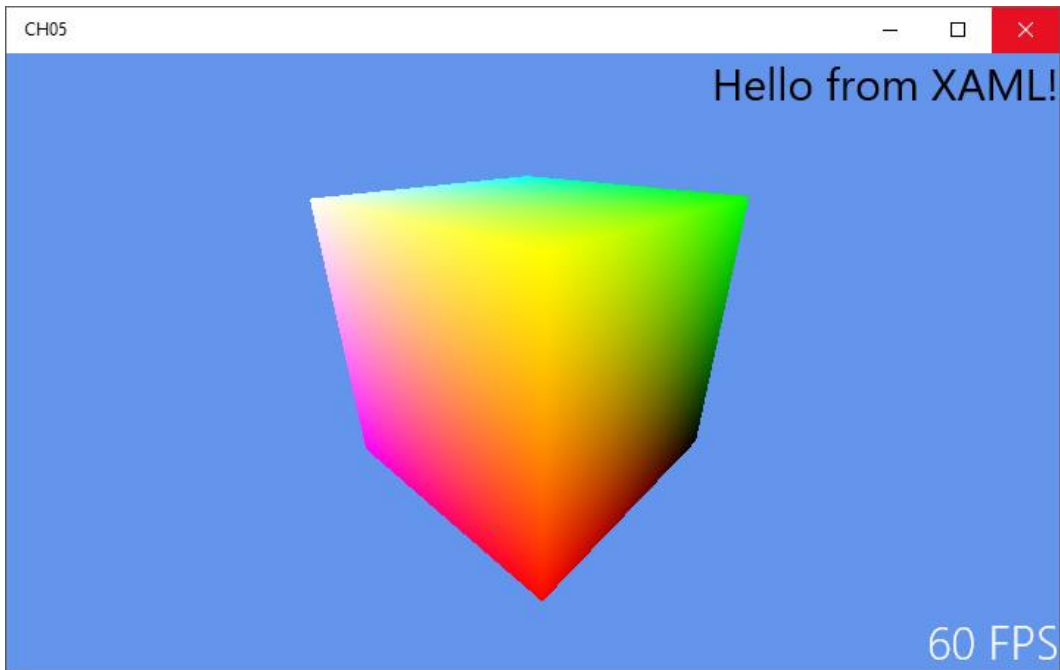
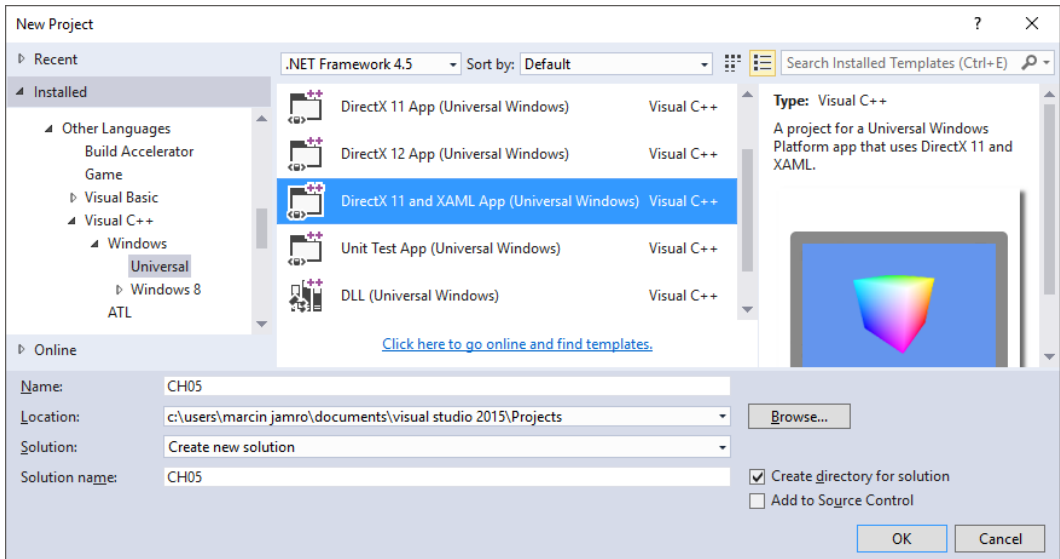


CH05

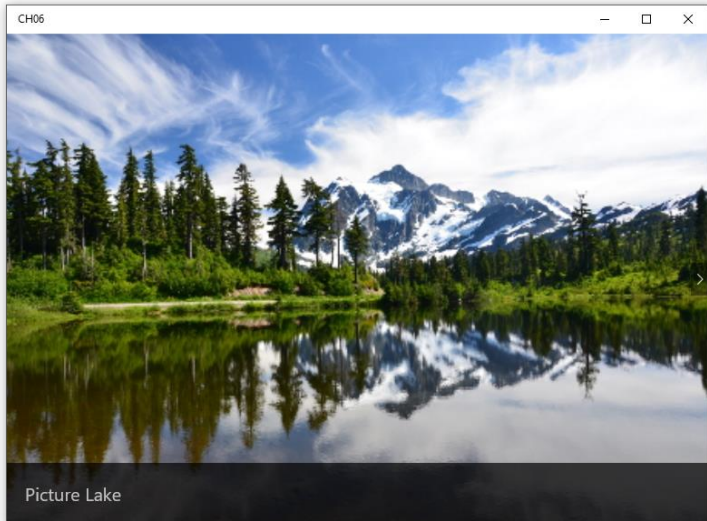
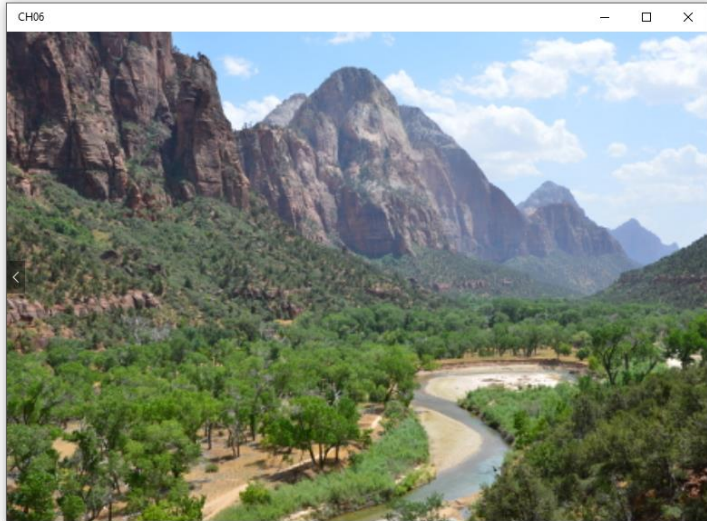
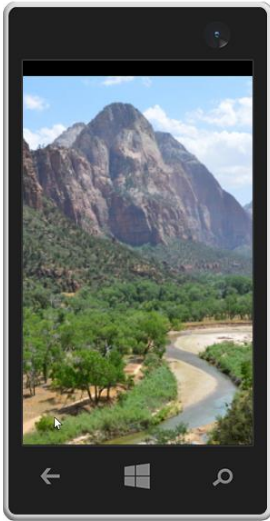


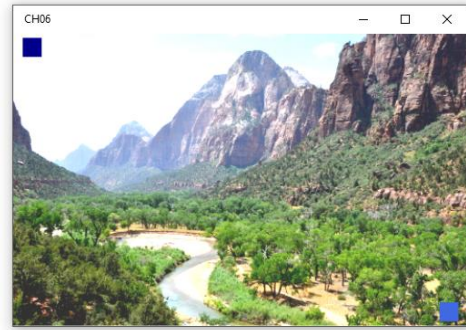


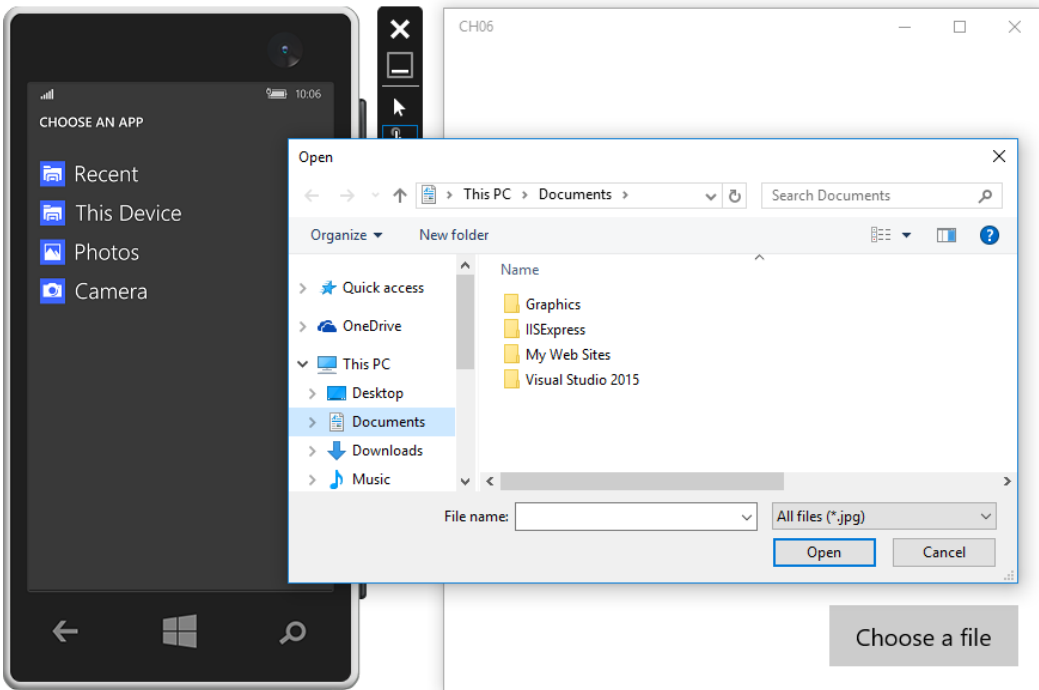
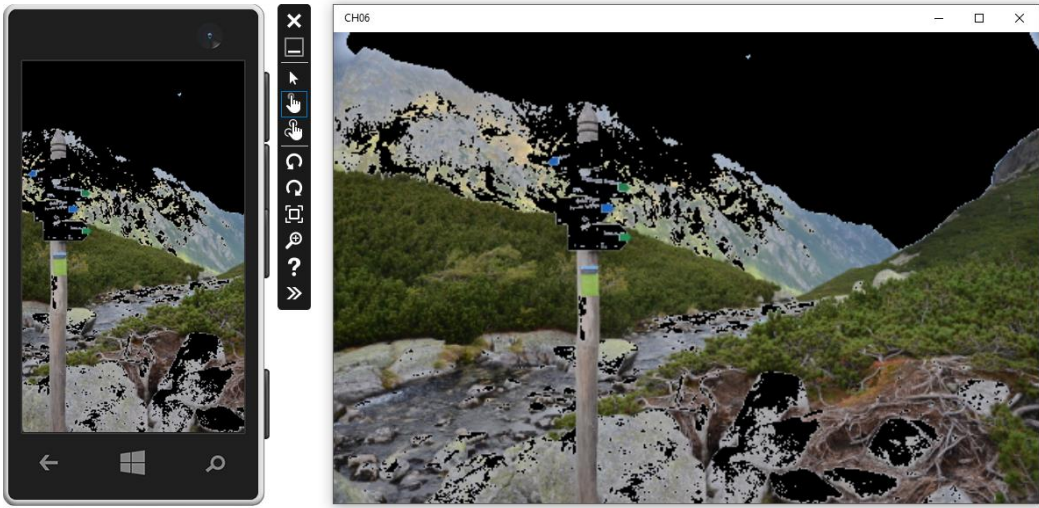


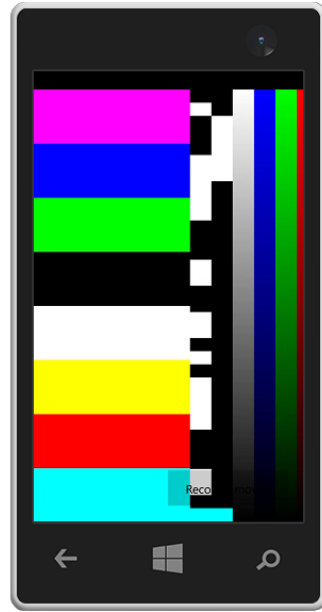
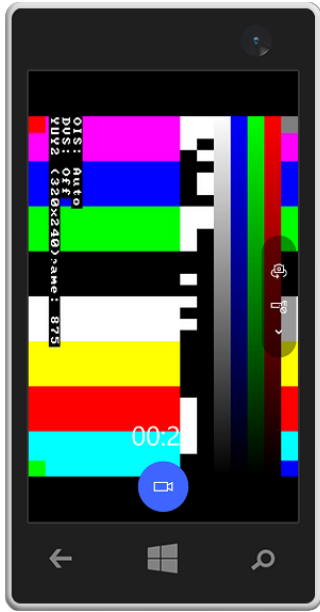
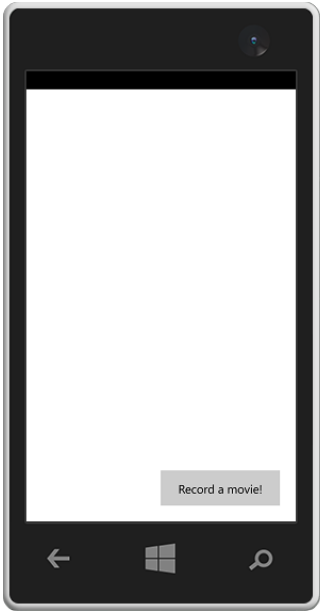
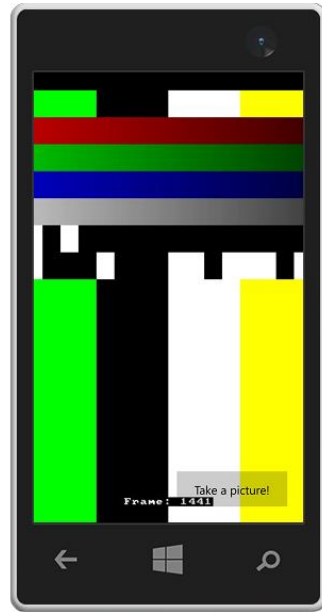
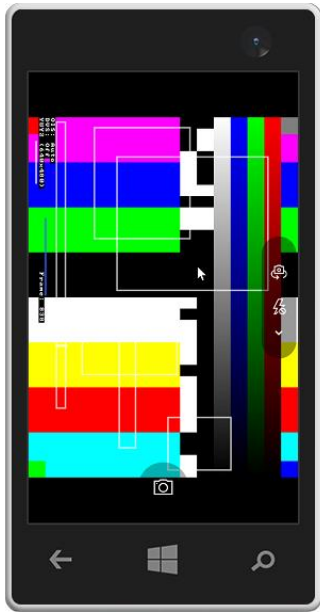
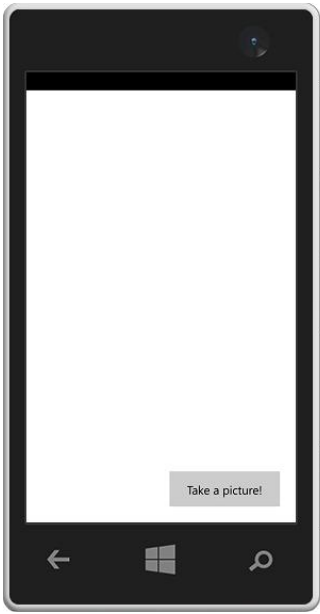


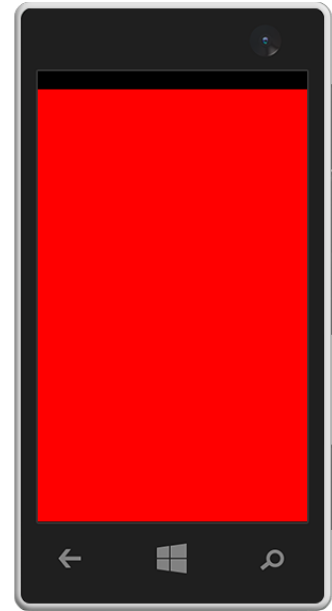
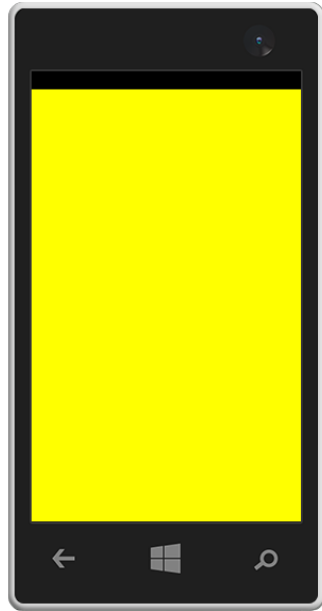
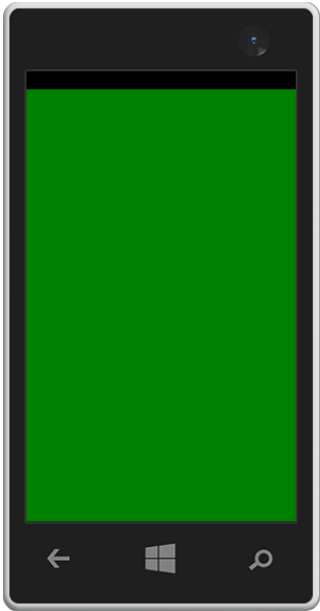
Multimedia



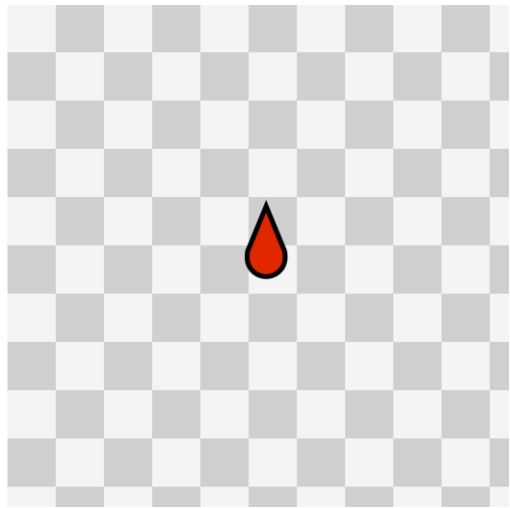
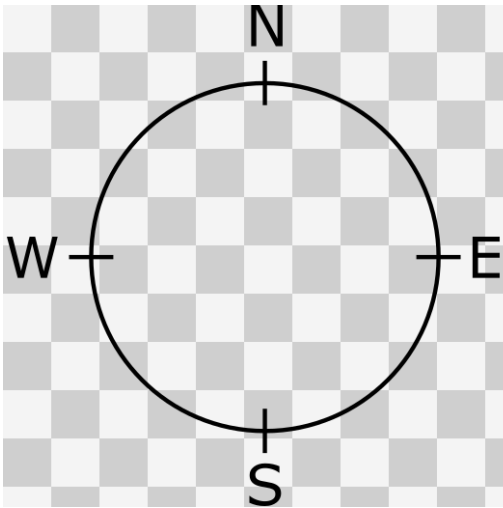
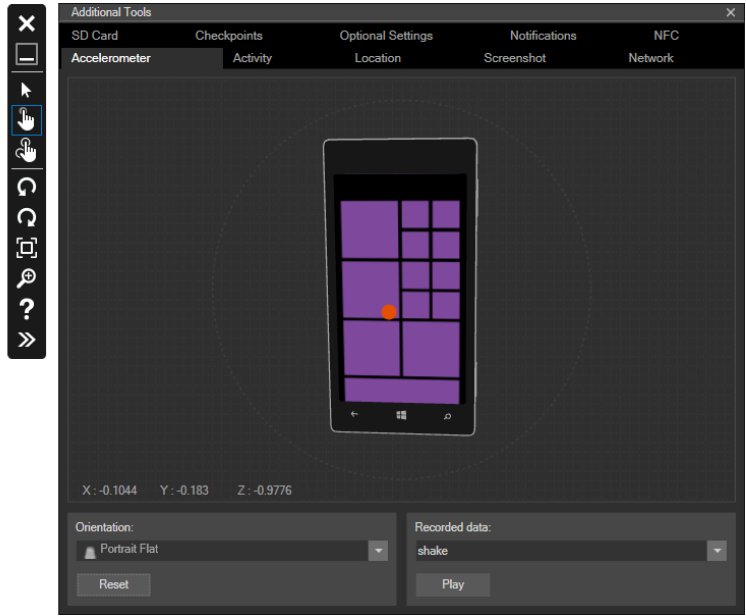
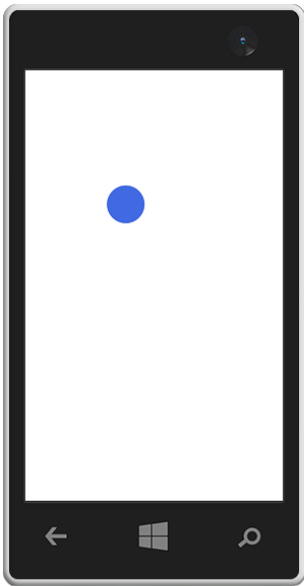


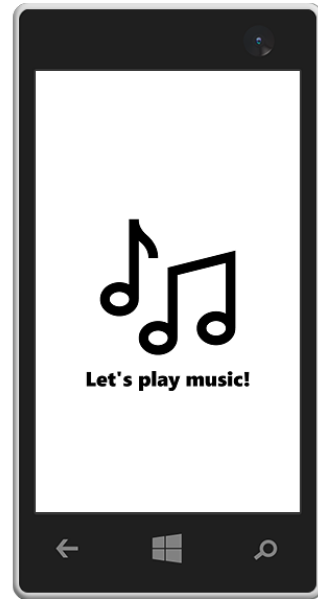
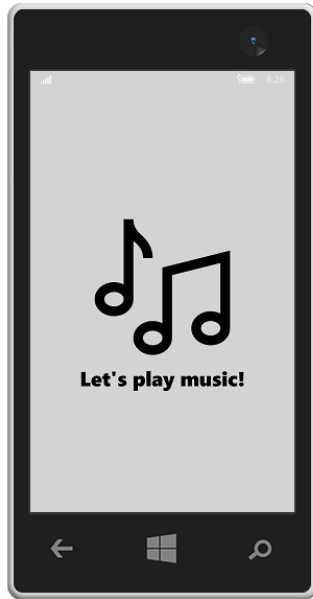
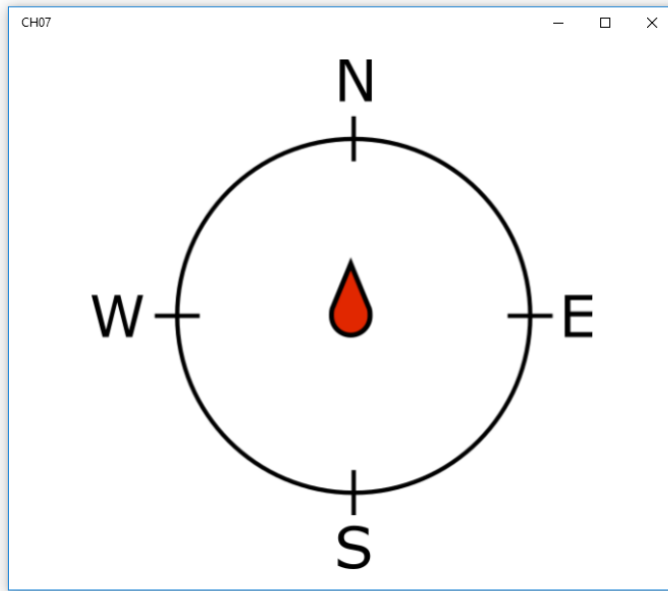
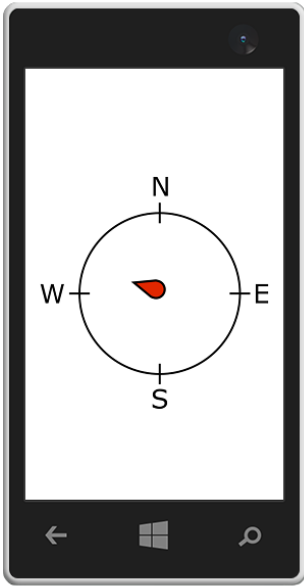


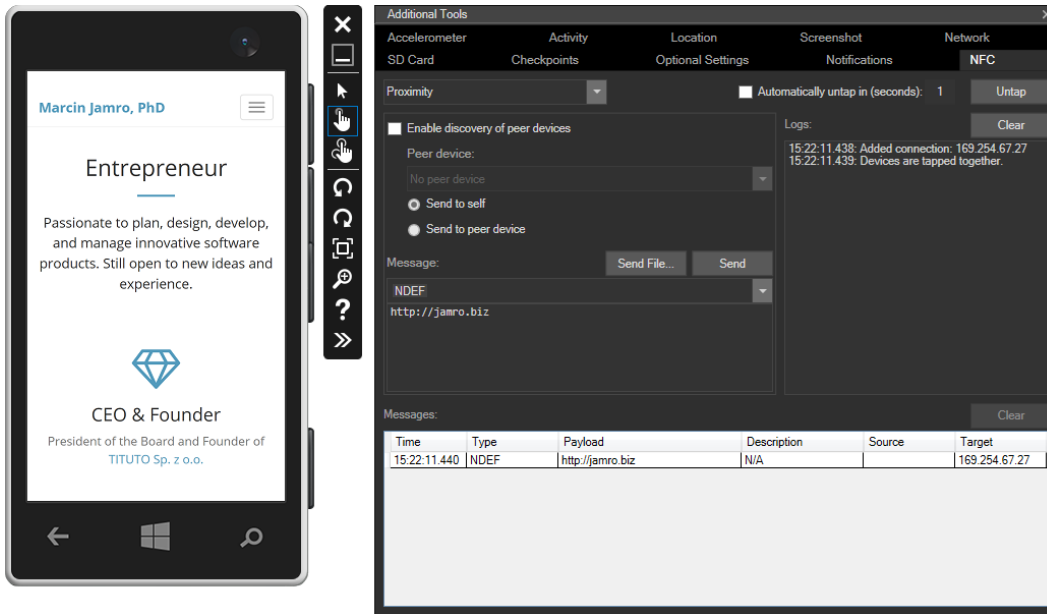
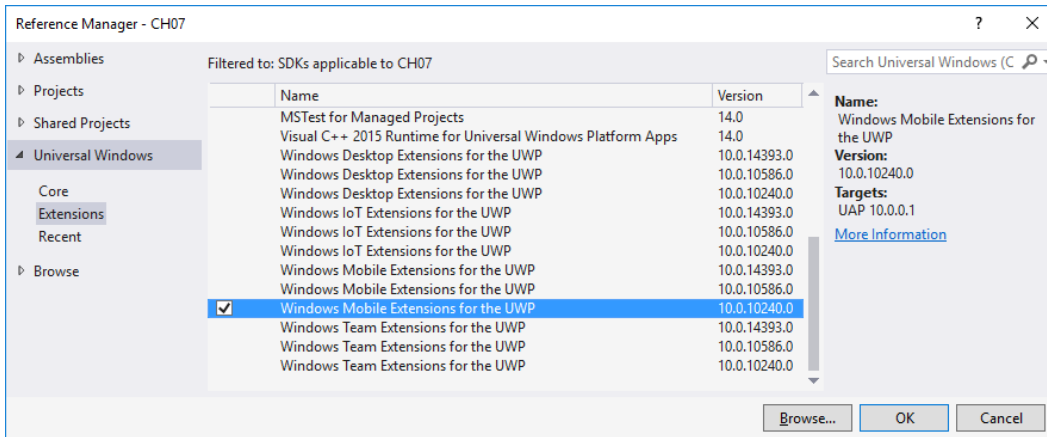


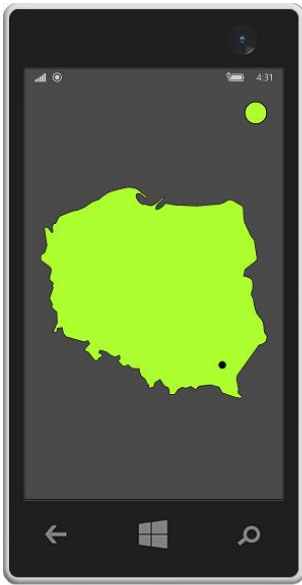


Built-in Sensors









Additional Tools

SD Card Checkpoints Optional Settings Notifications NFC
Accelerometer Activity **Location** Screenshot Network

Search Live Seconds per pin: 1

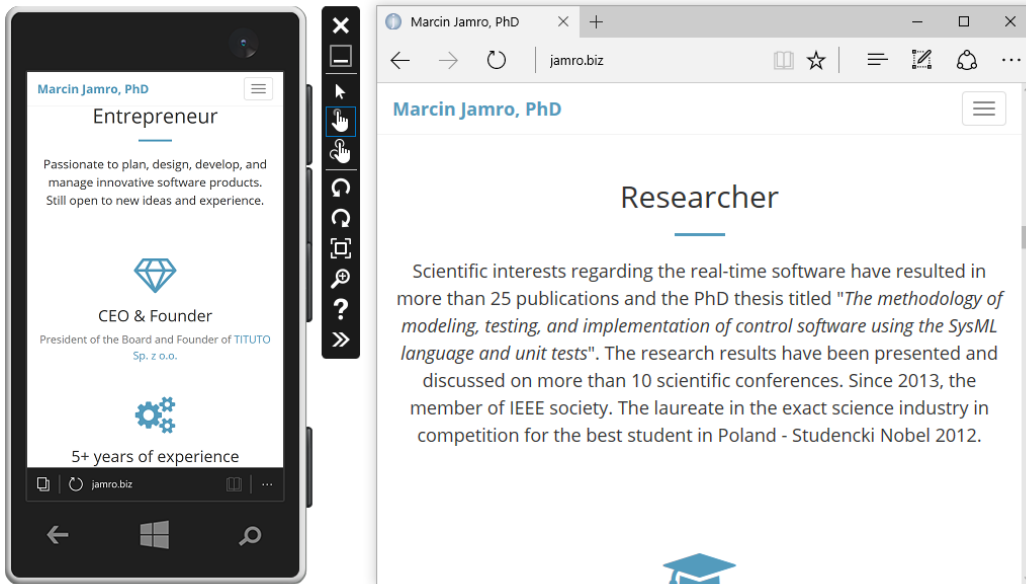
Pt Latitude / Longitude

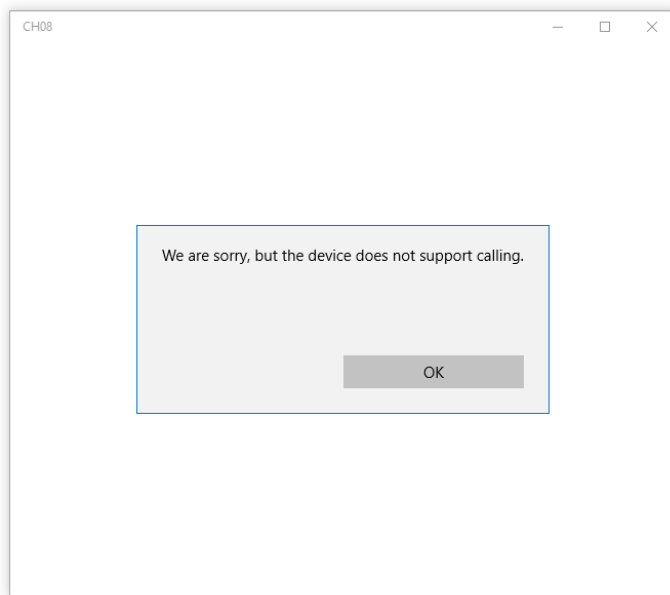
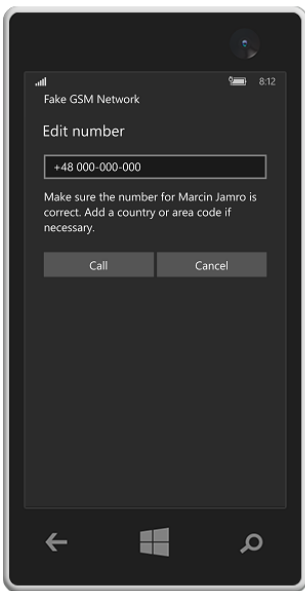
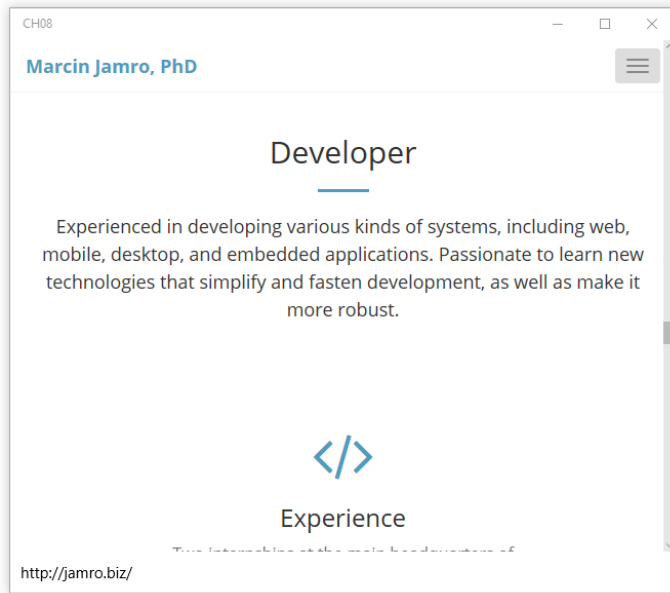
1	50.0324 / 021.9997
---	--------------------

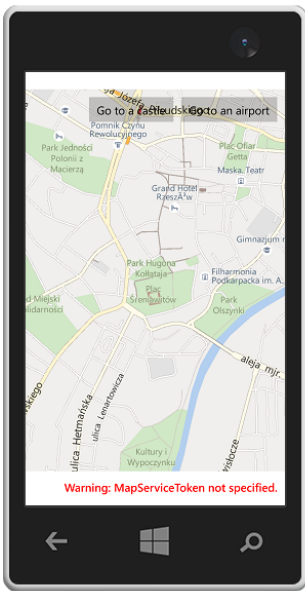
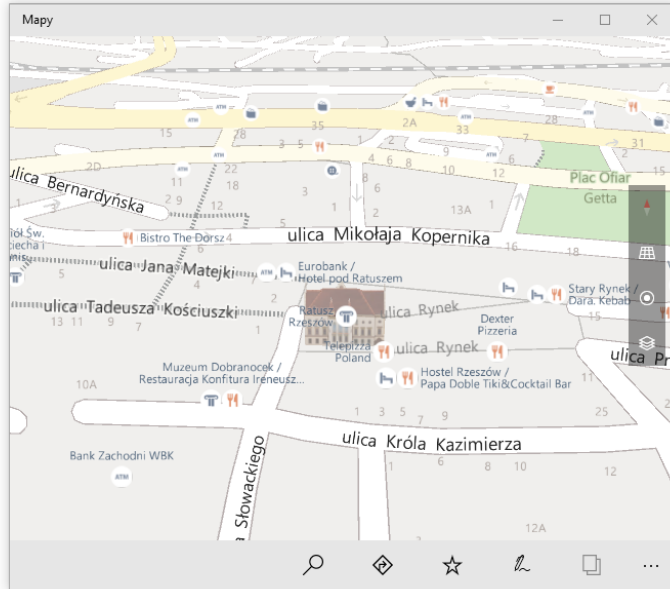
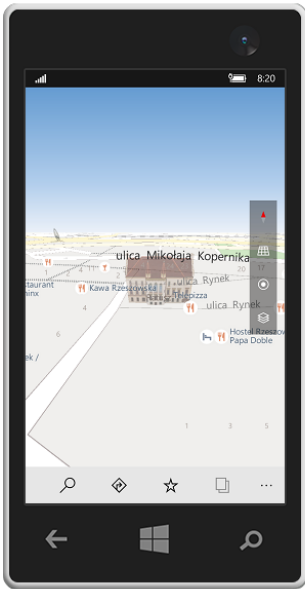
Accuracy profile:
Pin-Point

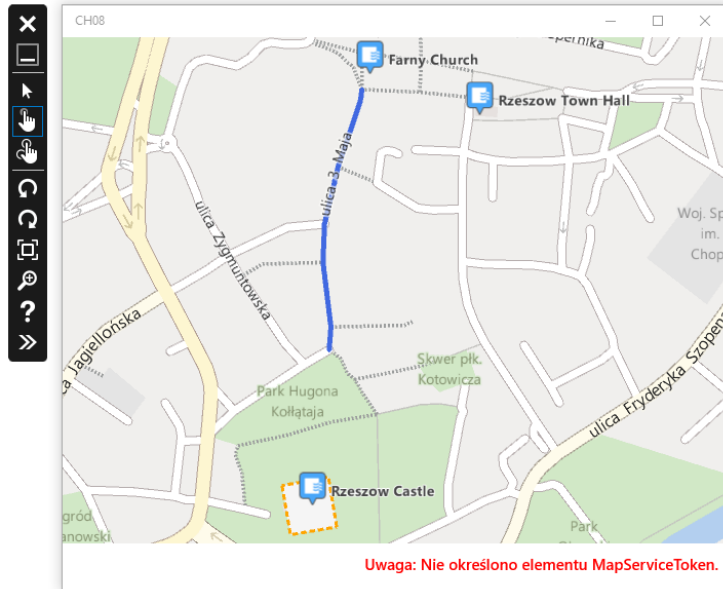
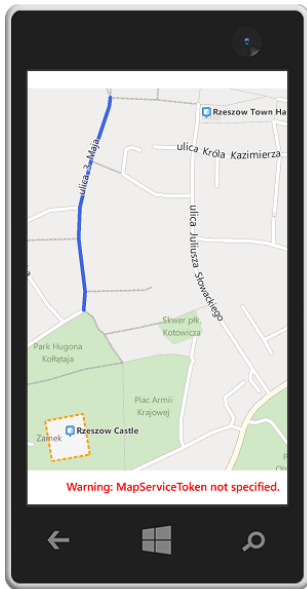
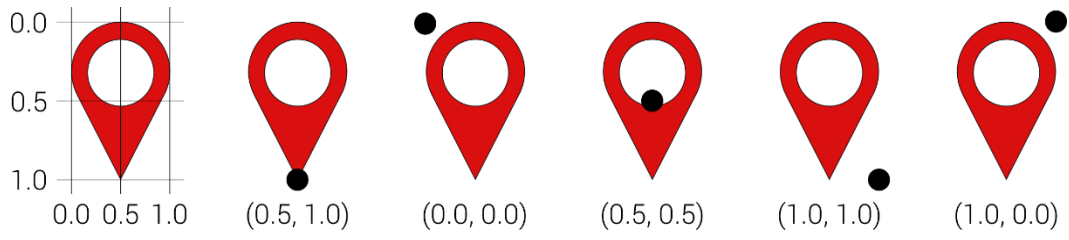
Current location:
True ground 50.0324 / 021.9997
Simulated 50.0324 / 021.9997 - GNSS

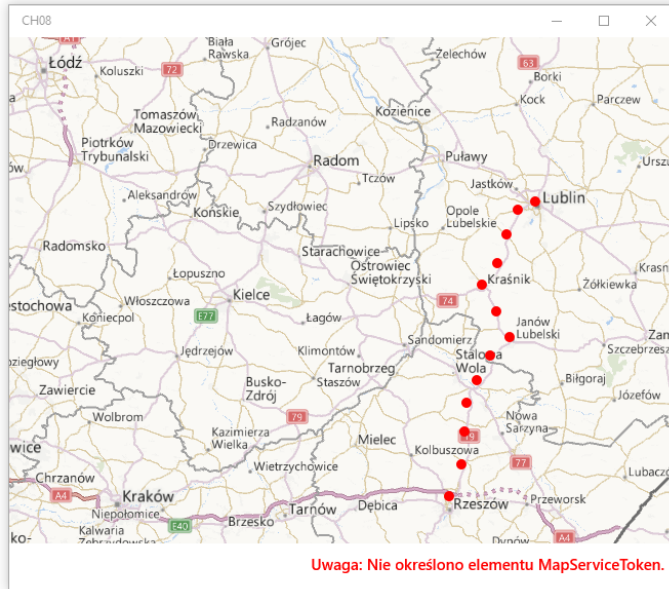
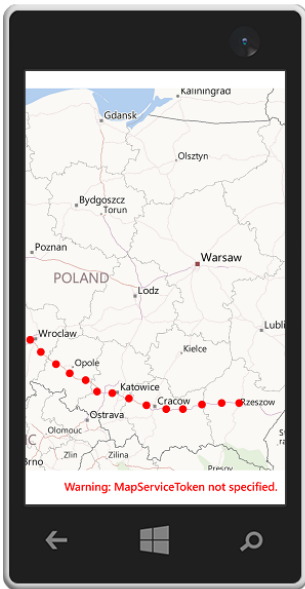
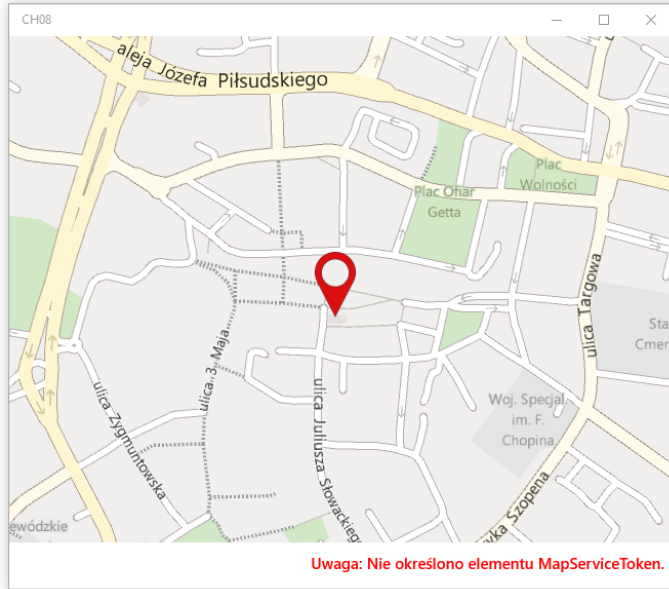
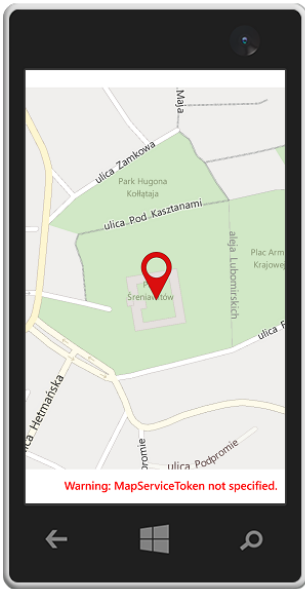
Internet-based Scenarios

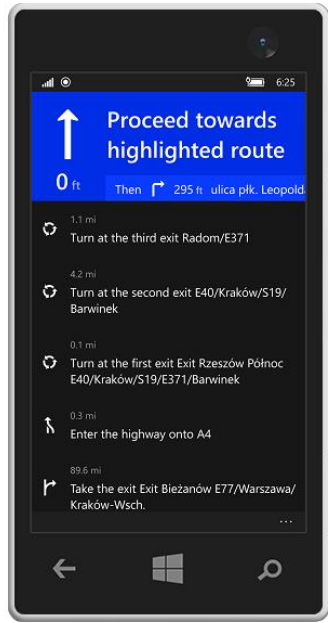
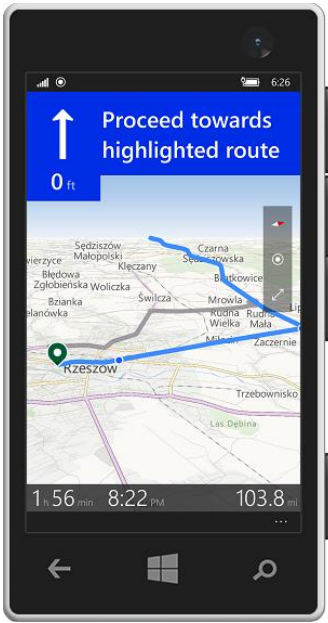




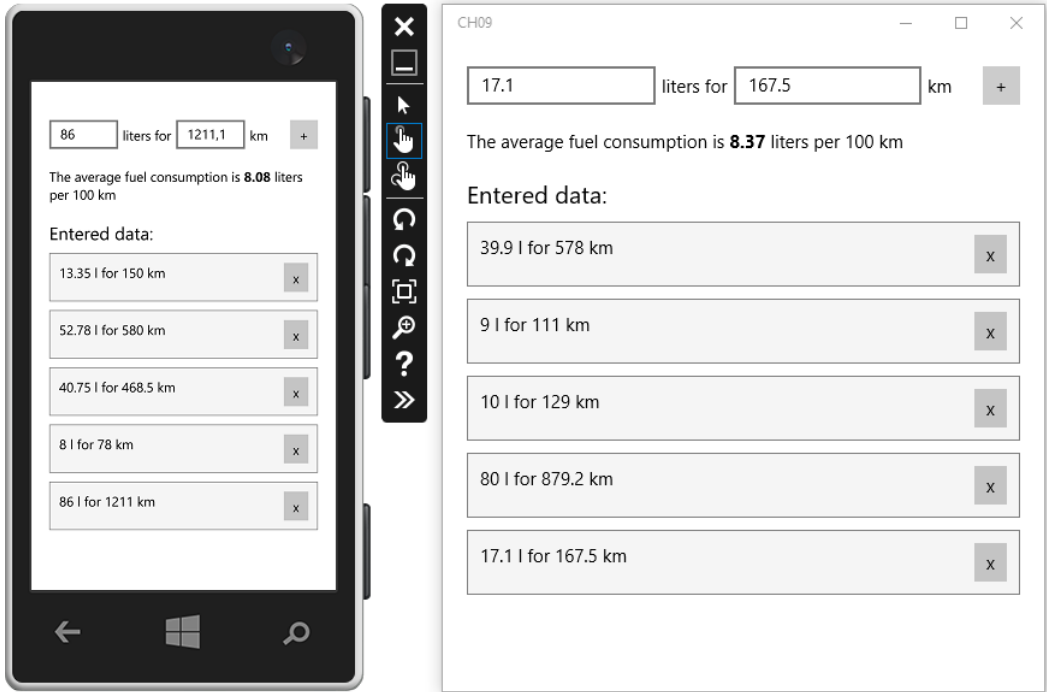


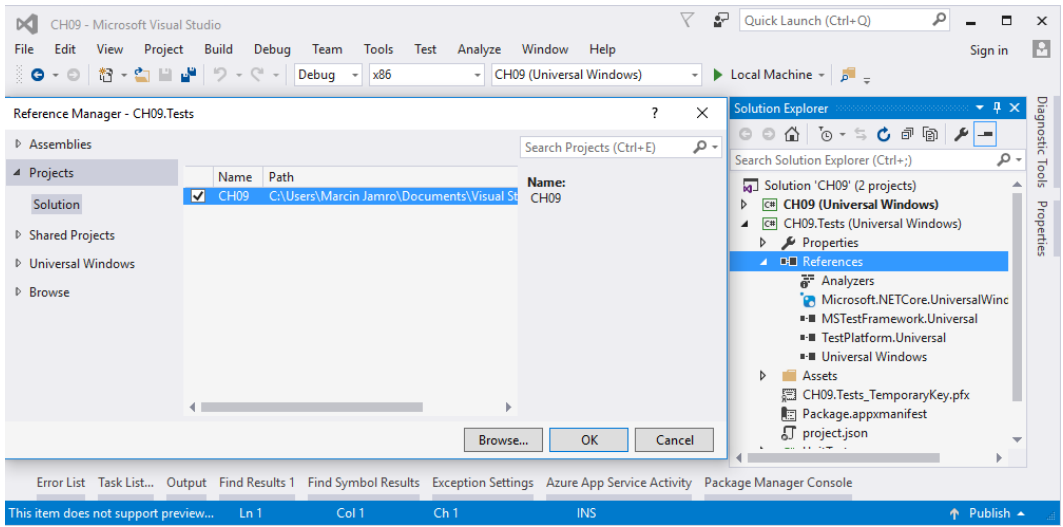
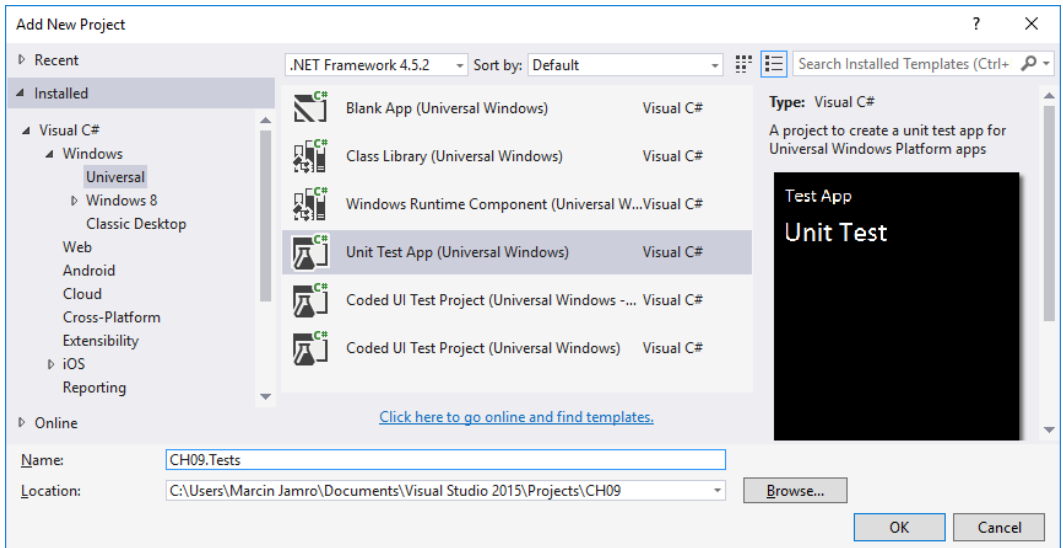


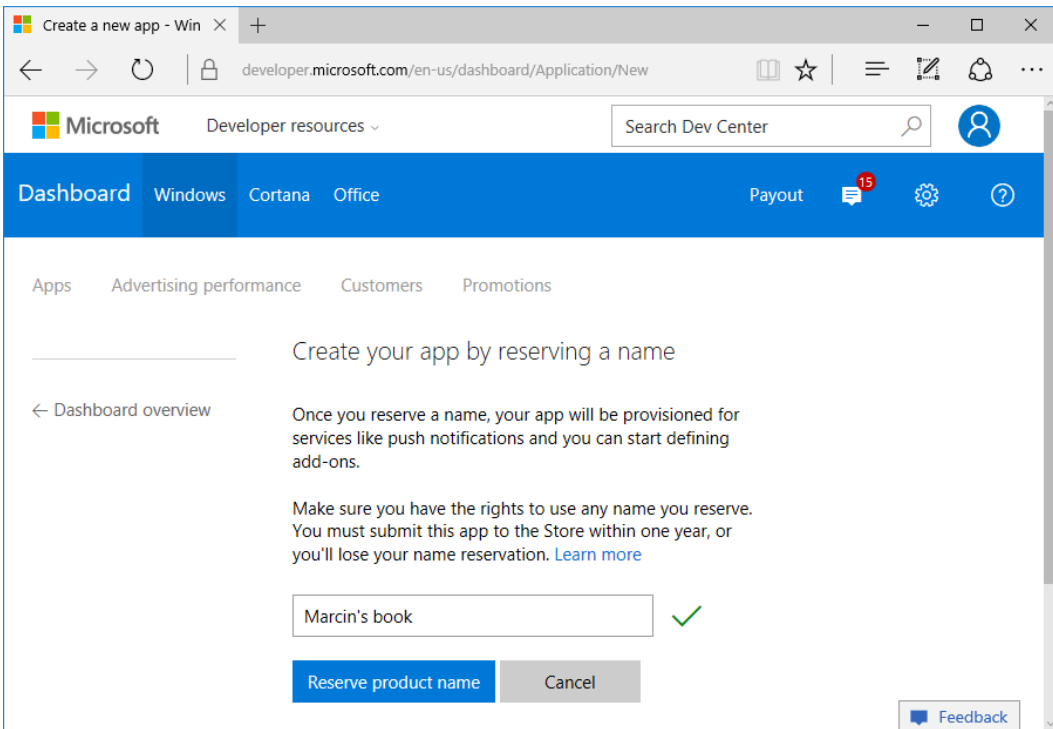
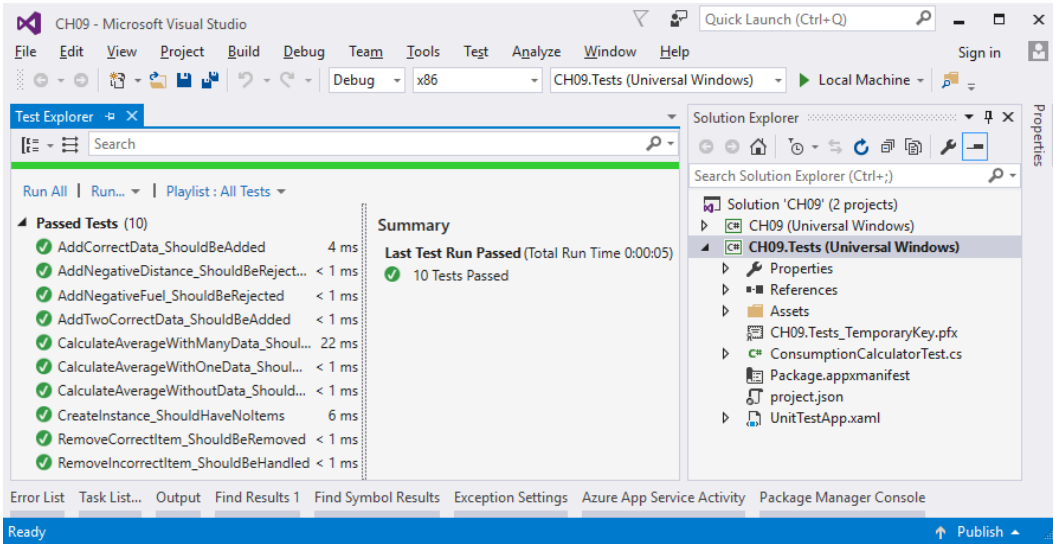




Testing and Submission







CH09

Package.appxmanifest

The properties of the deployment package for your app are contained in the app manifest file. You can use the Manifest Designer to set or modify one or more of the properties.

Application Visual Assets Capabilities Declarations Content URIs Packaging

Use this page to set the properties that identify and describe your app.





Display name:

Entry point:

Default language: [More information](#)

Description:

Supported rotations: An optional setting that indicates the app's orientation preferences.

 Landscape  Portrait  Landscape-flipped  Portrait-flipped

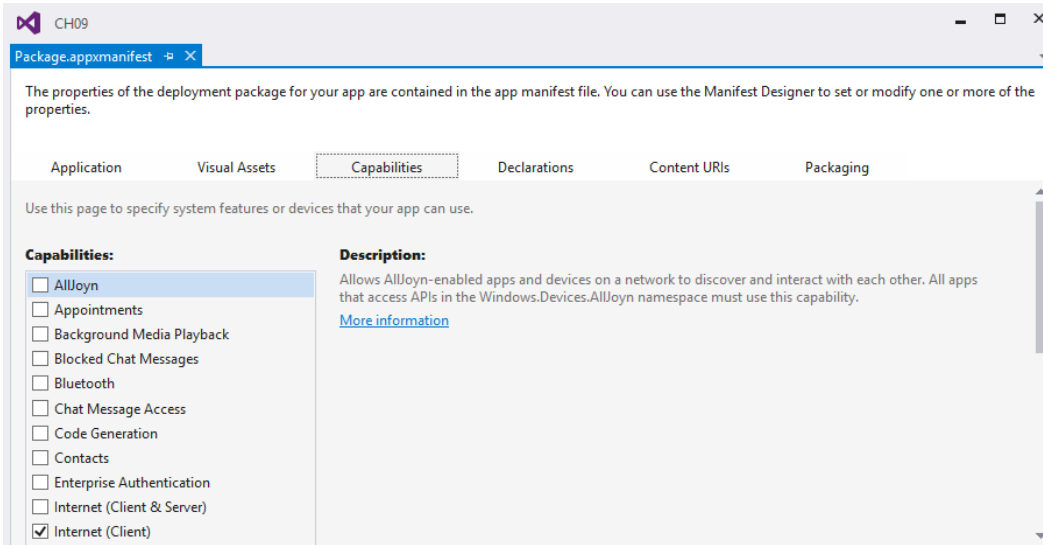
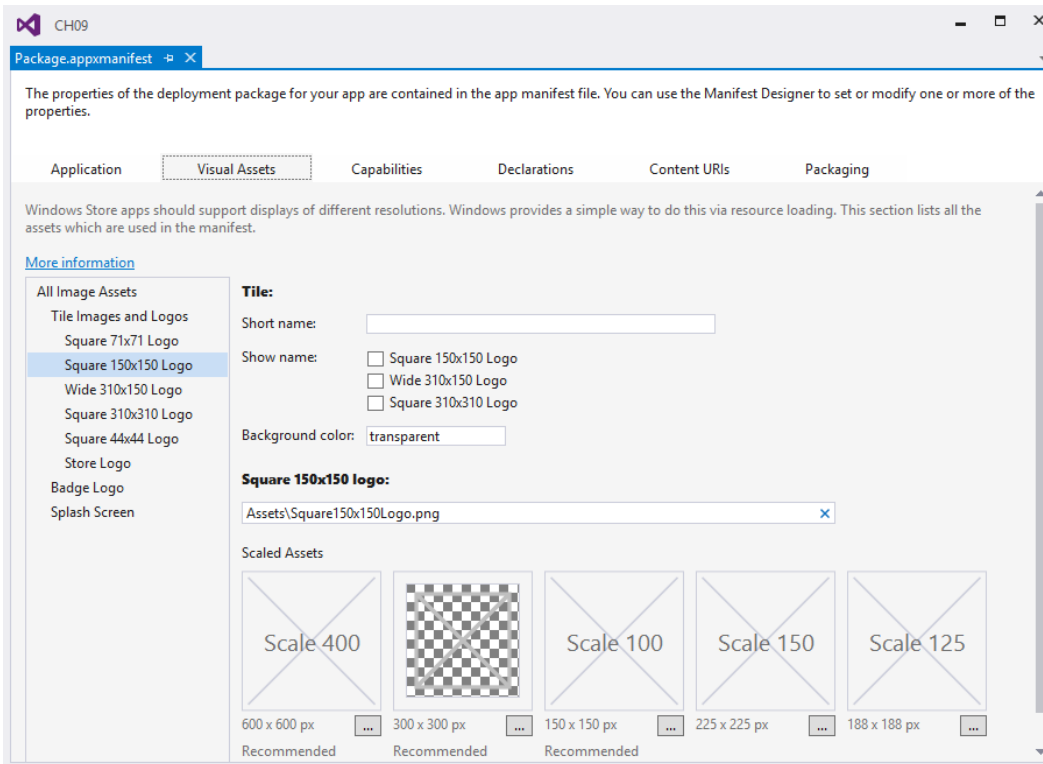
Lock screen notifications:

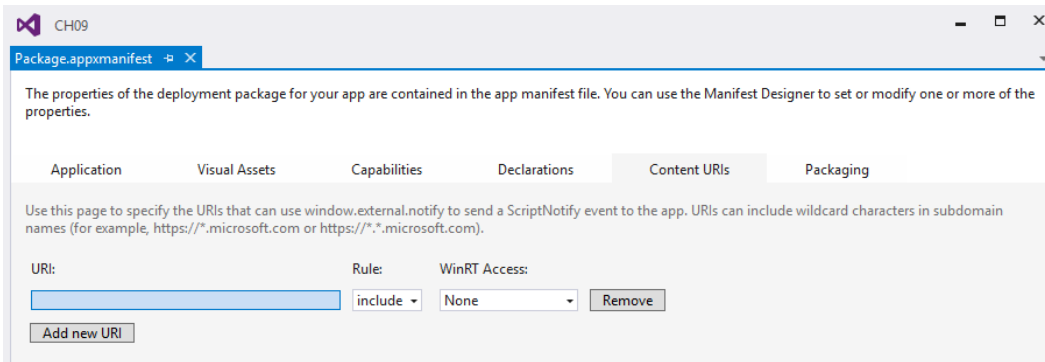
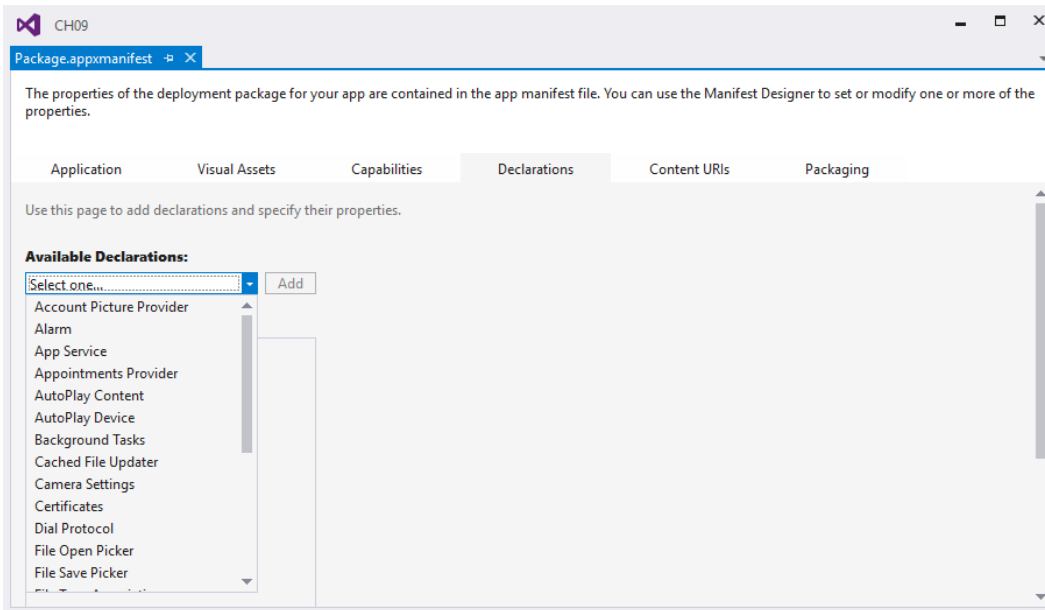
Resource group:

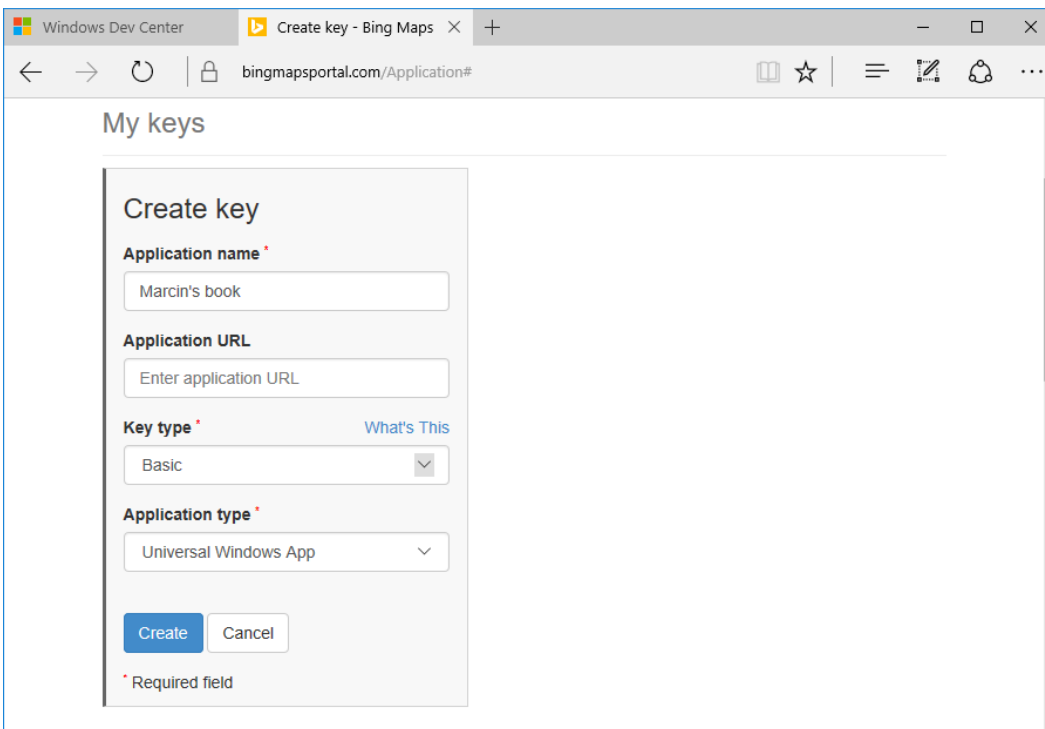
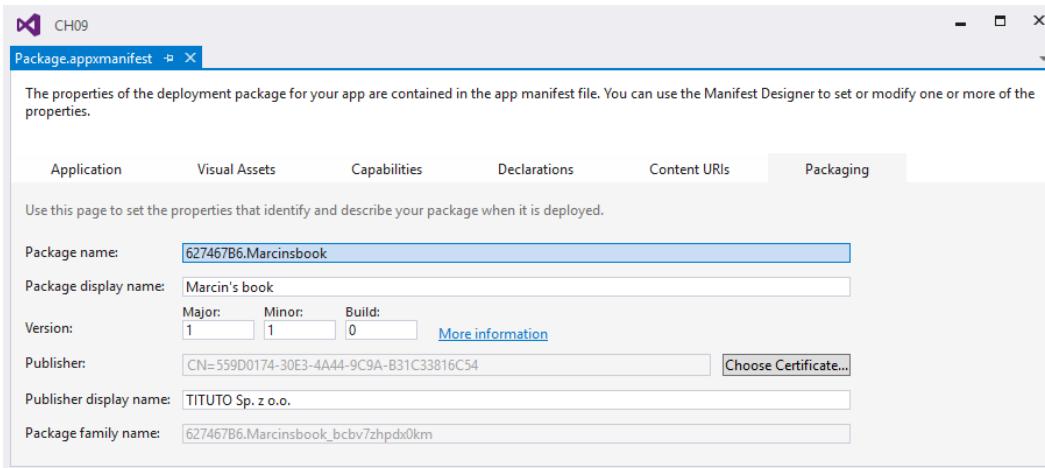
Tile Update:
Updates the app tile by periodically polling a URI. The URI template can contain "{language}" and "{region}" tokens that will be replaced at runtime to generate the URI to poll.
[More information](#)

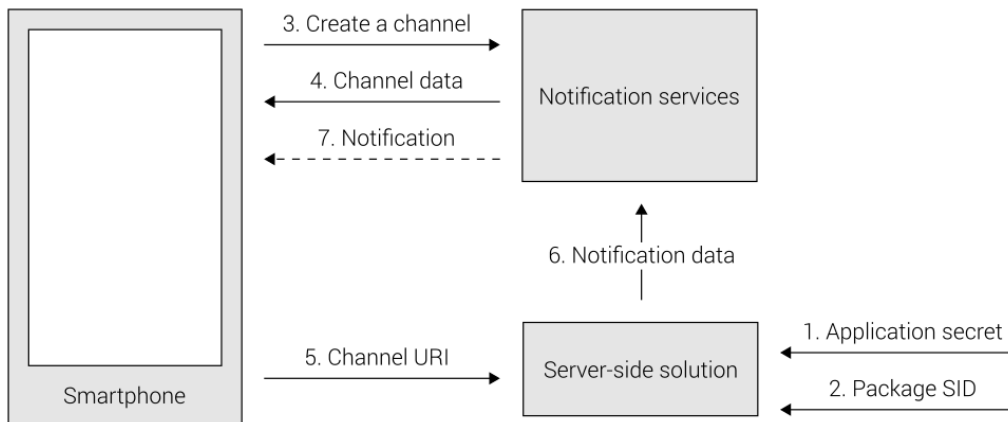
Recurrence:

URI Template:









Create App Packages

Select and Configure Packages

Output location:
 ...

Version:
 . . .

Automatically increment
[More information](#)

Generate app bundle:
 Always

[What does an app bundle mean?](#)

Select the packages to create and the solution configuration mappings:

	Architecture	Solution Configuration
<input type="checkbox"/>	Neutral	None
<input checked="" type="checkbox"/>	x86	Release (x86)
<input checked="" type="checkbox"/>	x64	Release (x64)
<input checked="" type="checkbox"/>	ARM	Release (ARM)

i The Windows Store will only accept the generated .appxupload package. Any other .appx packages are created for testing purposes only.

Include full PDB symbol files, if any, to enable crash analytics for the app. [Learn More](#)

Previous Create Cancel

Windows Dev Center x +

developer.microsoft.com/en-us/dashboard/apps/9NBLGGH43N13/submis

Microsoft Developer resources Search Dev Center

Dashboard Windows Cortana Office Payout 15

Apps Advertising performance Customers Promotions

Marcin's book Submission 1 Delete

App overview	Pricing and availability	Not started <input type="radio"/>
Analytics	Properties	Not started <input type="radio"/>
Submissions	Age ratings	Not started <input type="radio"/>
Submission 1	Packages	Not started <input type="radio"/>
Add-ons	Store listings	Not started <input type="radio"/>
Monetization	Manage Store listing languages	
Services	Notes for certification	

Feedback