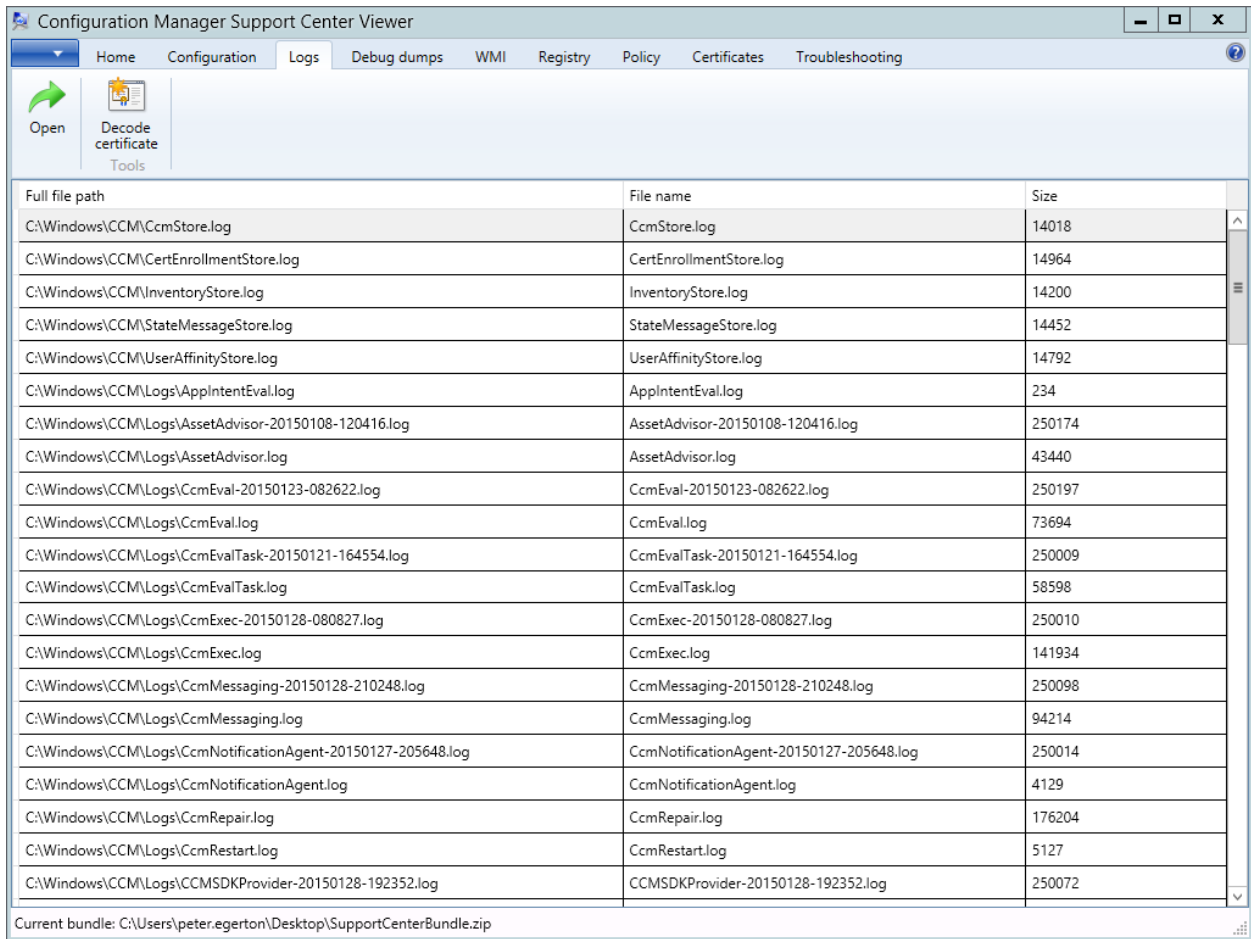


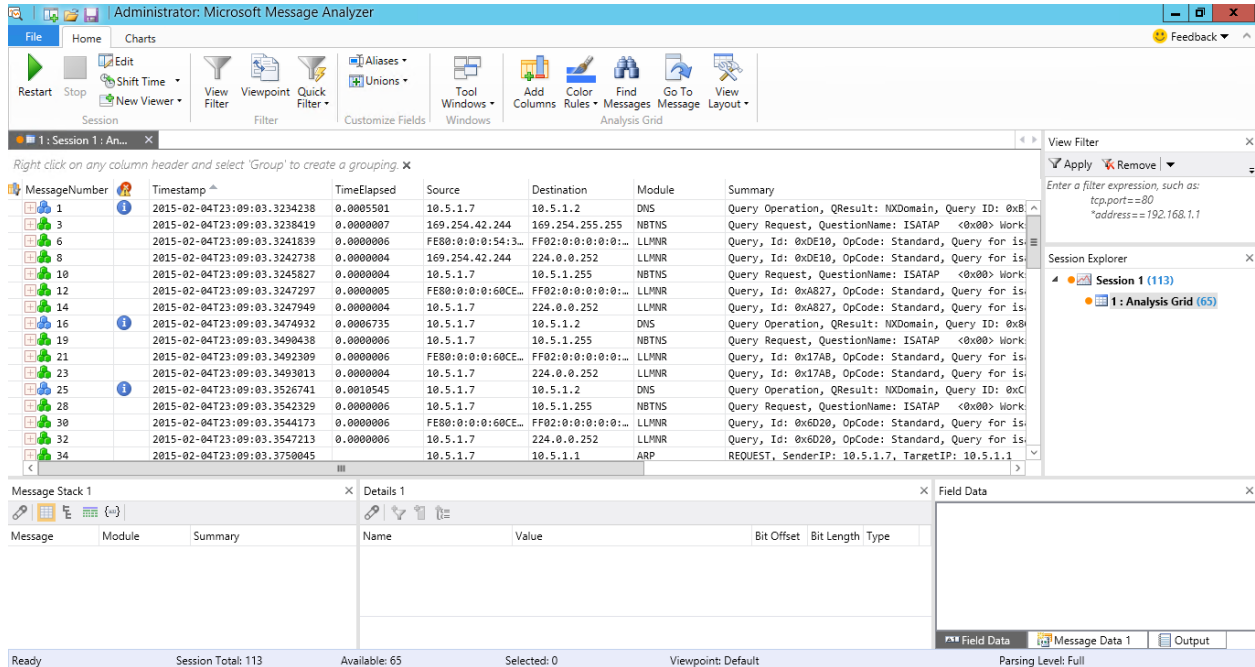
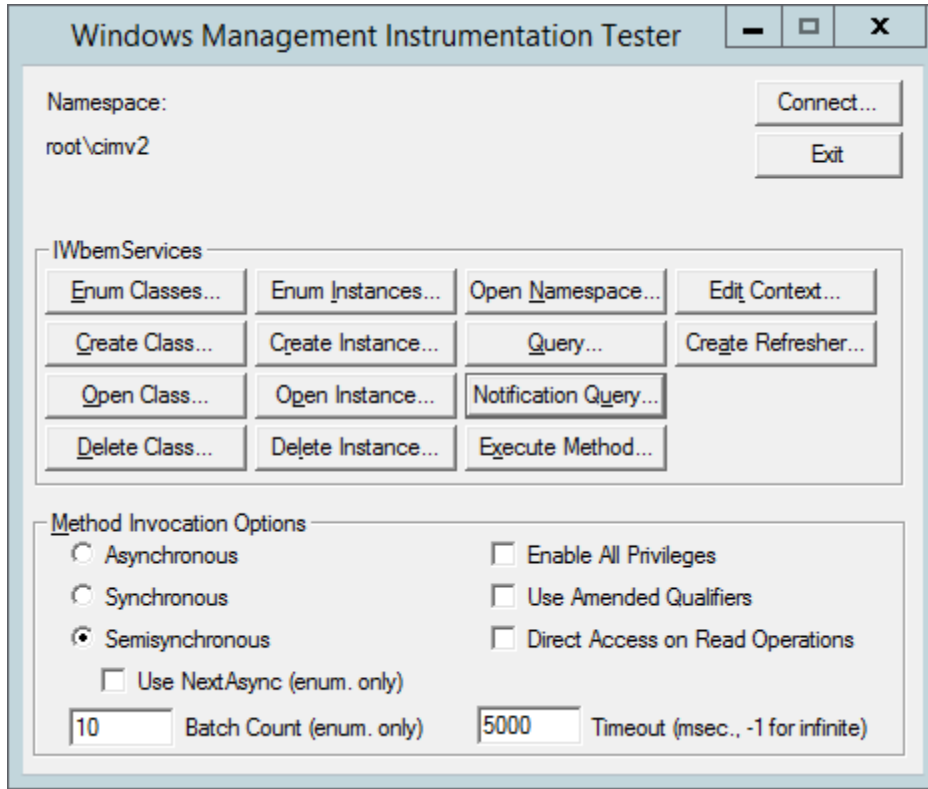
Chapter 1

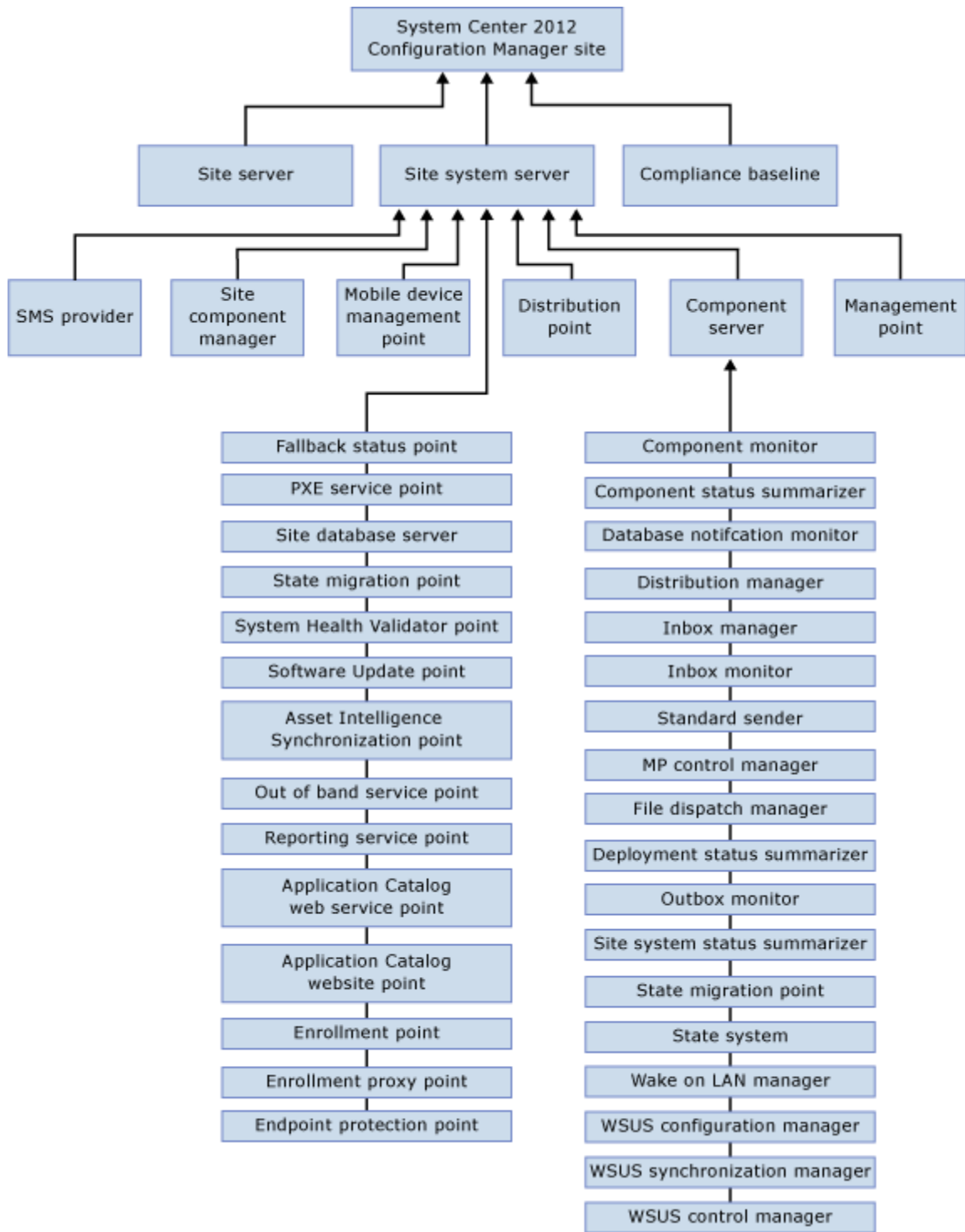


The screenshot shows the Configuration Manager Support Center Viewer application. The window title is "Configuration Manager Support Center Viewer". The menu bar includes Home, Configuration, Logs, Debug dumps, WMI, Registry, Policy, Certificates, and Troubleshooting. The "Logs" menu is currently selected. Below the menu bar, there are two buttons: "Open" (with a green arrow icon) and "Decode certificate" (with a certificate icon). Below these buttons is a "Tools" section. The main area of the window displays a table with three columns: "Full file path", "File name", and "Size". The table lists various log files, including CcmStore.log, CertEnrollmentStore.log, InventoryStore.log, StateMessageStore.log, UserAffinityStore.log, AppIntentEval.log, AssetAdvisor logs, CcmEval logs, CcmEvalTask logs, CcmExec logs, CcmMessaging logs, CcmNotificationAgent logs, CcmRepair.log, CcmRestart.log, and CCMSDKProvider logs. The current bundle path is shown at the bottom: "Current bundle: C:\Users\peter.egerton\Desktop\SupportCenterBundle.zip".

Full file path	File name	Size
C:\Windows\CCM\CcmStore.log	CcmStore.log	14018
C:\Windows\CCM\CertEnrollmentStore.log	CertEnrollmentStore.log	14964
C:\Windows\CCM\InventoryStore.log	InventoryStore.log	14200
C:\Windows\CCM\StateMessageStore.log	StateMessageStore.log	14452
C:\Windows\CCM\UserAffinityStore.log	UserAffinityStore.log	14792
C:\Windows\CCM\Logs\AppIntentEval.log	AppIntentEval.log	234
C:\Windows\CCM\Logs\AssetAdvisor-20150108-120416.log	AssetAdvisor-20150108-120416.log	250174
C:\Windows\CCM\Logs\AssetAdvisor.log	AssetAdvisor.log	43440
C:\Windows\CCM\Logs\CcmEval-20150123-082622.log	CcmEval-20150123-082622.log	250197
C:\Windows\CCM\Logs\CcmEval.log	CcmEval.log	73694
C:\Windows\CCM\Logs\CcmEvalTask-20150121-164554.log	CcmEvalTask-20150121-164554.log	250009
C:\Windows\CCM\Logs\CcmEvalTask.log	CcmEvalTask.log	58598
C:\Windows\CCM\Logs\CcmExec-20150128-080827.log	CcmExec-20150128-080827.log	250010
C:\Windows\CCM\Logs\CcmExec.log	CcmExec.log	141934
C:\Windows\CCM\Logs\CcmMessaging-20150128-210248.log	CcmMessaging-20150128-210248.log	250098
C:\Windows\CCM\Logs\CcmMessaging.log	CcmMessaging.log	94214
C:\Windows\CCM\Logs\CcmNotificationAgent-20150127-205648.log	CcmNotificationAgent-20150127-205648.log	250014
C:\Windows\CCM\Logs\CcmNotificationAgent.log	CcmNotificationAgent.log	4129
C:\Windows\CCM\Logs\CcmRepair.log	CcmRepair.log	176204
C:\Windows\CCM\Logs\CcmRestart.log	CcmRestart.log	5127
C:\Windows\CCM\Logs\CCMSDKProvider-20150128-192352.log	CCMSDKProvider-20150128-192352.log	250072

Current bundle: C:\Users\peter.egerton\Desktop\SupportCenterBundle.zip





Chapter 2

Add New Collection Alerts [X]

Client status:

- Client check pass or no results for active clients falls below threshold (%)
- Client remediation success falls below the threshold (%)
- Client activity falls below threshold (%)

Endpoint protection:

- Malware is detected
- The same type of malware is detected on a number of computers
- The same type of malware is repeatedly detected within the specified interval on a computer
- Multiple types of malware are detected on the same computer with the specified interval

Membership:

- Member count exceeds threshold

[OK] [Cancel]

Component Name	Server Name	Status
SMS_COMPONENT_MONITOR	DEMO-CM01.INFDEMO.COM	Running

Configuration Manager Component Logging - Single Com... [X]

Logging enabled

Use same file for all selected components

Log filename:

Log size (MB): [up/down arrows]

[OK] [Cancel]



Filter Status Messages ? X

Filter

Severity: <Any>

Type: <Any>

Site code:

Component:

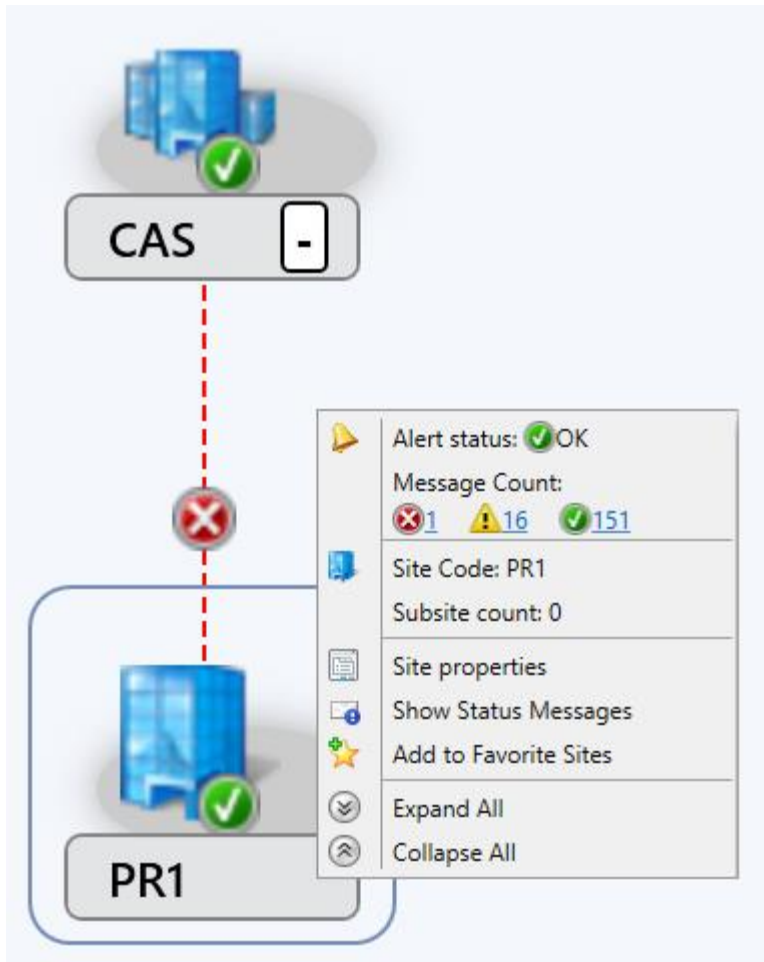
System:

Message ID:

Description:

Advanced... <None >

Clear All OK Cancel



System Center Configuration Manager (Connected to INF - Infdemo)

Search

All Objects Saved Searches Search Settings Save Current Search Save Current Search As Close

Scope Options Save Active Search

Monitoring Overview

Monitoring

- Overview
- Alerts
- Queries
- Reporting
- Site Hierarchy
- System Status
- Deployments
- Client Operations
- Client Status
- Database Replication
- Distribution Status
- Software Update Point Synchronization Status
- Site Servicing Status
- Endpoint Protection Status

Assets and Compliance

Software Library

Monitoring

Administration

Monitoring

Navigation Index

- [Alerts](#): View and manage alerts.
- [Reporting](#): View and manage reports and report subscriptions, and configure report options.
- [System Status](#): View and manage site status, component status, conflicting records, and status message queries.
- [Client Operations](#): View client operation details.
- [Database Replication](#): View site-to-site link status.
- [Software Update Point Synchronization Status](#): View software update point synchronization status across the hierarchy.
- [Endpoint Protection Status](#): View Endpoint Protection status details.

Recent Alerts (0) - Last updated: 13/01/2016 15:01:37

Chapter 3

Name	Type	Data
(Default)	REG_SZ	(value not set)
LogDirectory	REG_SZ	C:\Windows\CCM\Logs
LogEnabled	REG_DWORD	0x00000001 (1)
LogLevel	REG_DWORD	0x00000000 (0)
LogMaxHistory	REG_DWORD	0x00000003 (3)
LogMaxSize	REG_DWORD	0x00100000 (1048576)

Name	Type	Data
(Default)	REG_SZ	(value not set)
Enabled	REG_SZ	True

Configuration Manager Properties

Cache Configurations Network

General Components Actions Site

Select an action to run a client cycle independently from schedules that are configured in the Configuration Manager console.


Actions:

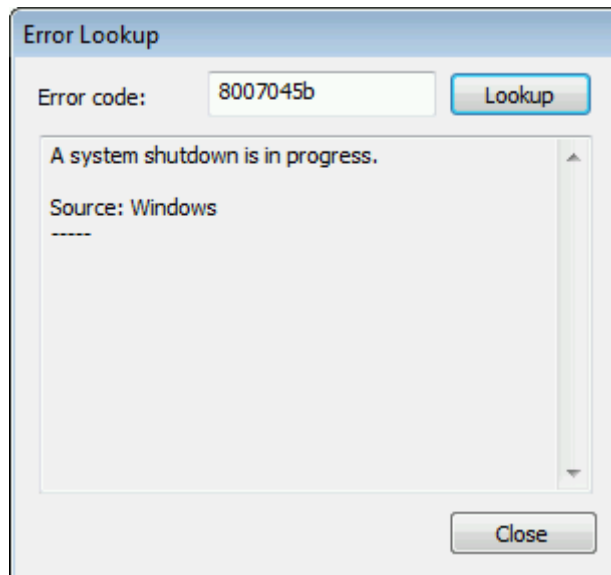
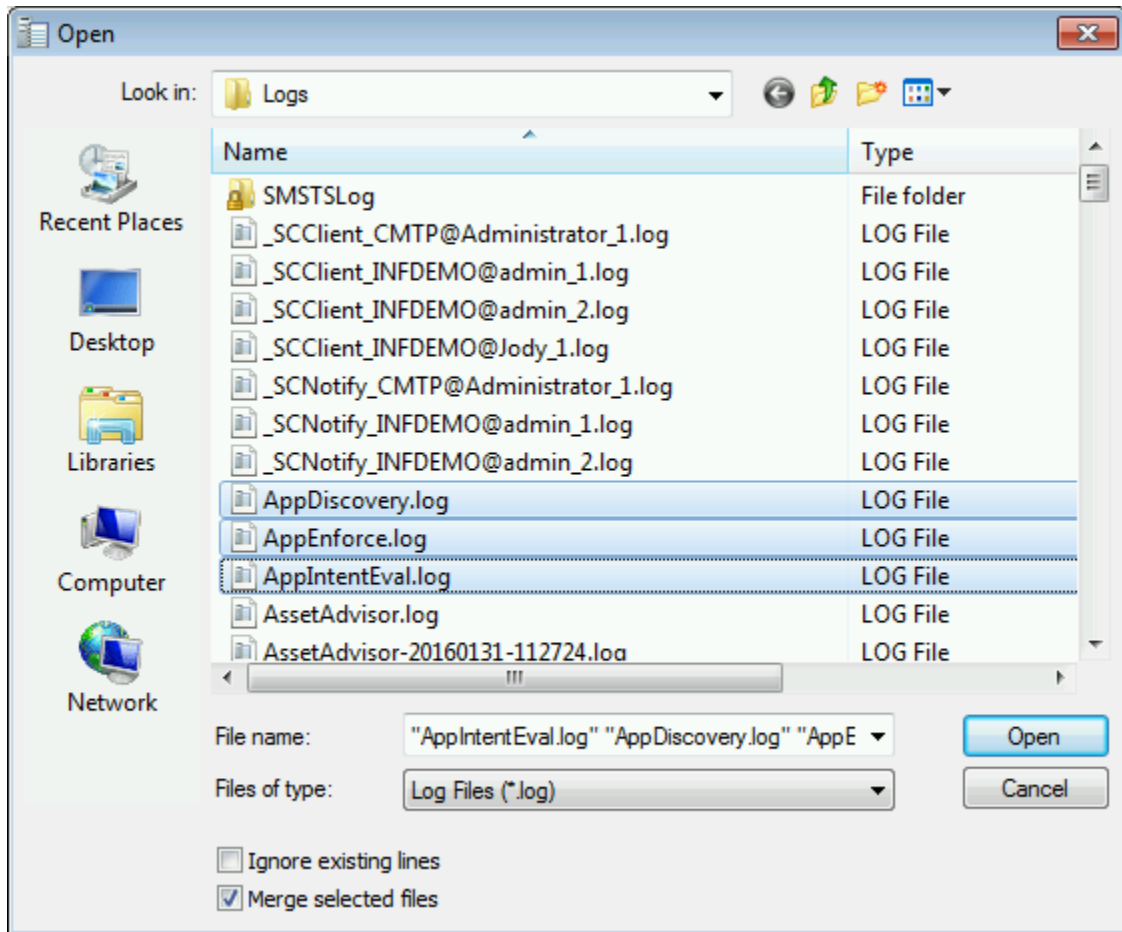
- Application Deployment Evaluation Cycle
- Discovery Data Collection Cycle
- File Collection Cycle
- Hardware Inventory Cycle
- Machine Policy Retrieval & Evaluation Cycle
- Software Inventory Cycle
- Software Metering Usage Report Cycle
- Software Updates Deployment Evaluation Cycle
- Software Updates Scan Cycle
- User Policy Retrieval & Evaluation Cycle
- Windows Installer Source List Update Cycle

Run Now

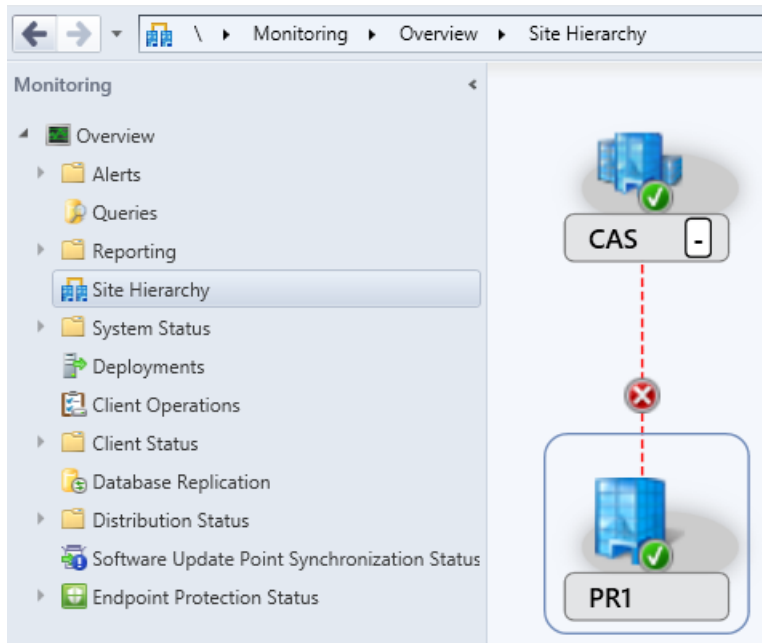
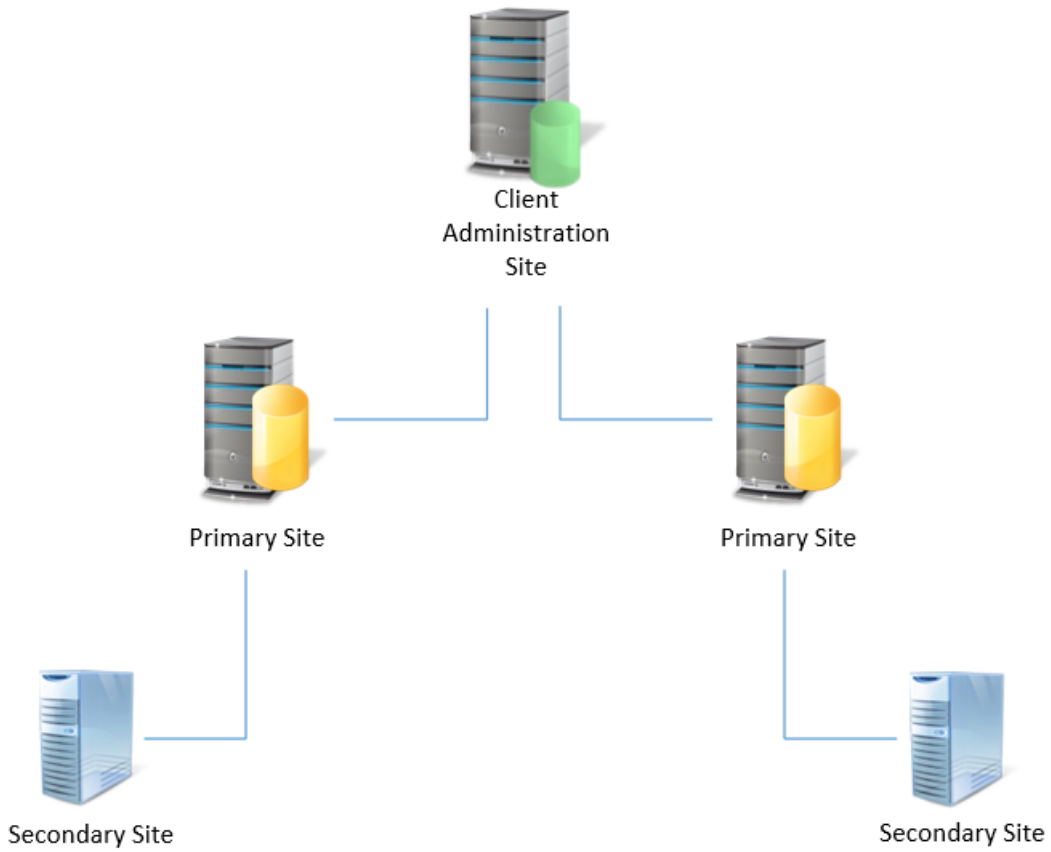
OK Cancel Apply

Log Text	Component
Entering ExecQueryAsync for query "select * from CCM_AppDeliveryType where (AppDeliveryTypeld = "Scopeld_6E61F03E-E...	AppDiscovery
Performing detection of app deployment type http://demo-cm01/Reports - Web Application(Scopeld_6E61F03E-E39A-4C...	AppDiscovery
+++ Application NOT Discovered [AppDT Id: Scopeld_6E61F03E-E39A-4C19-B84F-5EB567933EFA/DeploymentType_1a9e8fd...	AppDiscovery
No dependencies for DeploymentType Scopeld_6E61F03E-E39A-4C19-B84F-5EB567933EFA/DeploymentType_1a9e8fd9-d24b...	AppIntentEval
+++ Did not detect app deployment type http://demo-cm01/Reports - Web Application(Scopeld_6E61F03E-E39A-4C19-B84...	AppDiscovery
Evaluating Application policies for S-1-5-21-307359223-2356355981-3919538702-1104	AppIntentEval
Scopeld_6E61F03E-E39A-4C19-B84F-5EB567933EFA/DeploymentType_1a9e8fd9-d24b-4e79-ba6f-8eb290cbbea9/1 :- Current ...	AppIntentEval
Scopeld_6E61F03E-E39A-4C19-B84F-5EB567933EFA/Application_ae4df908-2f0d-41b3-a466-03b54b6794b8/4 :- Current State ...	AppIntentEval
Scopeld_6E61F03E-E39A-4C19-B84F-5EB567933EFA/RequiredApplication_ae4df908-2f0d-41b3-a466-03b54b6794b8/4 :- Curre...	AppIntentEval
+++ Starting Install enforcement for App DT "http://demo-cm01/Reports - Web Application" ApplicationDeliveryType - Sco...	AppEnforce
The Install action on AppDT "http://demo-cm01/Reports - Web Application" [Scopeld_6E61F03E-E39A-4C19-B84F-5EB56793...	AppDiscovery
The content path is not specified for DeploymentType Scopeld_6E61F03E-E39A-4C19-B84F-5EB567933EFA/DeploymentTy...	AppEnforce
A user is logged on to the system.	AppEnforce
Performing detection of app deployment type http://demo-cm01/Reports - Web Application(Scopeld_6E61F03E-E39A-4C...	AppEnforce
+++ Application NOT Discovered [AppDT Id: Scopeld_6E61F03E-E39A-4C19-B84F-5EB567933EFA/DeploymentType_1a9e8fd...	AppEnforce
Performing detection of app deployment type http://demo-cm01/Reports - Web Application(Scopeld_6E61F03E-E39A-4C...	AppEnforce
++++++ App enforcement completed (1 seconds) for App DT "http://demo-cm01/Reports - Web Application" [Scopeld_6E...	AppEnforce
+++ Discovered application [AppDT Id: Scopeld_6E61F03E-E39A-4C19-B84F-5EB567933EFA/DeploymentType_1a9e8fd9-d24...	AppEnforce
Entering ExecQueryAsync for query "select * from CCM_AppDeliveryType where (AppDeliveryTypeld = "Scopeld_6E61F03E-E...	AppDiscovery
Performing detection of app deployment type http://demo-cm01/Reports - Web Application(Scopeld_6E61F03E-E39A-4C...	AppDiscovery
+++ Discovered application [AppDT Id: Scopeld_6E61F03E-E39A-4C19-B84F-5EB567933EFA/DeploymentType_1a9e8fd9-d24...	AppDiscovery
+++ Detected app deployment type http://demo-cm01/Reports - Web Application(Scopeld_6E61F03E-E39A-4C19-B84F-5EB...	AppDiscovery
No dependencies for DeploymentType Scopeld_6E61F03E-E39A-4C19-B84F-5EB567933EFA/DeploymentType_1a9e8fd9-d24b...	AppIntentEval
Evaluating Application policies for S-1-5-21-307359223-2356355981-3919538702-1104	AppIntentEval
Scopeld_6E61F03E-E39A-4C19-B84F-5EB567933EFA/DeploymentType_1a9e8fd9-d24b-4e79-ba6f-8eb290cbbea9/1 :- Current ...	AppIntentEval
Scopeld_6E61F03E-E39A-4C19-B84F-5EB567933EFA/Application_ae4df908-2f0d-41b3-a466-03b54b6794b8/4 :- Current State ...	AppIntentEval
Scopeld_6E61F03E-E39A-4C19-B84F-5EB567933EFA/RequiredApplication_ae4df908-2f0d-41b3-a466-03b54b6794b8/4 :- Curre...	AppIntentEval
No dependencies for DeploymentType Scopeld_6E61F03E-E39A-4C19-B84F-5EB567933EFA/DeploymentType_1a9e8fd9-d24b...	AppIntentEval
Evaluating Application policies for S-1-5-21-307359223-2356355981-3919538702-1104	AppIntentEval
Scopeld_6E61F03E-E39A-4C19-B84F-5EB567933EFA/DeploymentType_1a9e8fd9-d24b-4e79-ba6f-8eb290cbbea9/1 :- Current ...	AppIntentEval
Scopeld_6E61F03E-E39A-4C19-B84F-5EB567933EFA/Application_ae4df908-2f0d-41b3-a466-03b54b6794b8/4 :- Current State ...	AppIntentEval
Scopeld_6E61F03E-E39A-4C19-B84F-5EB567933EFA/RequiredApplication_ae4df908-2f0d-41b3-a466-03b54b6794b8/4 :- Curre...	AppIntentEval

Issued To	Issued By	Expiratio...	Intended Purposes	Certificate Template
 DEMO-WIN81.infdemo.com	infdemo-DEMO-DC01-CA	23/02/2016	Client Authentication	ConfigMgr Client Domain Joined



Chapter 4



Folder Tools System Center 2012 R2 Configuration Manager (Connected to INF - Inframon Headquarters Site)

Search Close

All Objects Saved Searches Search Settings Save Current Search Save Current Search As Close

Scope Options Save Active Search

Overview Namespaces SMS_ApplicationLatest.ModelName="Scopeld_6E61F03E-E39A-4C19-B84F-5EB567933EFA/Application_00012e43-483d-4516-a4aa-e523456bc00"

Tools

Overview

Namespaces

SMS_ApplicationLatest.ModelName="Scopeld_6E61F03E-E39A-4C19-B84F-5EB567933EFA/Application_00012e43-483d-4516-a4aa-e523456bc00"

Assets and Compliance

Software Library

Monitoring

Administration

Tools

Ready

Name	Type	Value
ApplicabilityCondition	String	
CategoryInstance_UniqueIDs	String	
CI_ID	InvariantLong	16786030
CI_UniqueID	String	Scopeld_6E61F03E-E39A-4C19-B84F-5EB567933EFA/Application_00012e43-483d-4516-a4aa-e523456bc00
CIType_ID	InvariantLong	10
CIVersion	InvariantLong	7
CreatedBy	String	INFDEMO/administrator
DateCreated	DateTime	20130305113025.000000-000
DateLastModified	DateTime	20140722095446.000000-000
EffectiveDate	DateTime	
EULAAccepted	InvariantLong	2
EULAExists	Boolean	False
EULASignoffDate	DateTime	19700101000000.000000+***
EULASignoffUser	String	
ExecutionContext	InvariantLong	0
Featured	InvariantLong	0
HasContent	Boolean	True
IsBundle	Boolean	False
IsDeployable	Boolean	True
IsDeployed	Boolean	True
IsDigest	Boolean	True

Connection Settings

Name:

Path:

Connection Point

Select or type a Distinguished Name or Naming Context:

Select a well known Naming Context:

Computer

Select or type a domain or server: (Server | Domain [:port])

Default (Domain or server that you logged in to)

Use SSL-based Encryption

Advanced... OK Cancel

Chapter 5

Icon	Status	Site System	Site System Role	Storage Object	Total	Site Code
	OK	\\DEMO-CM01.infdemo.com	Management point	\\DEMO-CM01.INFDEMO.COM\C\$\Program Files\Microsoft Configuration Manager	0 Bytes	INF

Management point Properties ✕

General | Management Point Database

A management point provides policy and content location information to clients. It also receives configuration data from clients.

Client connections:

HTTP
This option does not support mobile devices, Mac computers, or connections over the Internet

HTTPS
This option requires client computers to have a valid PKI certificate for client authentication

Allow intranet-only connections ▼

Allow mobile devices and Mac computers to use this management point

To manage Mac computers and mobile devices that are enrolled by Configuration Manager, you must select an option that allows Internet client connections.

Generate alert when the management point is not healthy

OK Cancel Apply

Content Status Search Results - 2 items shown

configuration manager ✕ 🔍 Search Add Criteria ▼

Icon	Software	Type	Targeted	Size (MB)	Compliance %	Date Created	Package ID	Source Version
	Configuration Manager Client Package	Package	2	173.46	100.0	02/10/2014 20:52	INF00002	3
	Configuration Manager Client Upgrade Package	Package	2	1.54	100.0	02/10/2014 20:52	INF00003	3

Configuration Manager Client Package ▼

General

Software: Configuration Manager Client Package
 Type: Package
 Date Created: 02/10/2014 20:52
 Package ID: INF00002

Completion Statistics



■ Success: 2
■ In Progress: 0
■ Failed: 0
■ Unknown: 0

2 Targeted (Last Update: 24/04/2015 10:37) [View Status](#)

Monitoring > Overview > Distribution Status > Content Status > Configuration Manager Client Package

Content Status Refresh

Content Distribution: Configuration Manager Client Package

Success
 In Progress
 Error
 Unknown





Status	Assets	Status Type
Successfully processed content on distribution point	1	Success
Successfully distributed content	1	Success

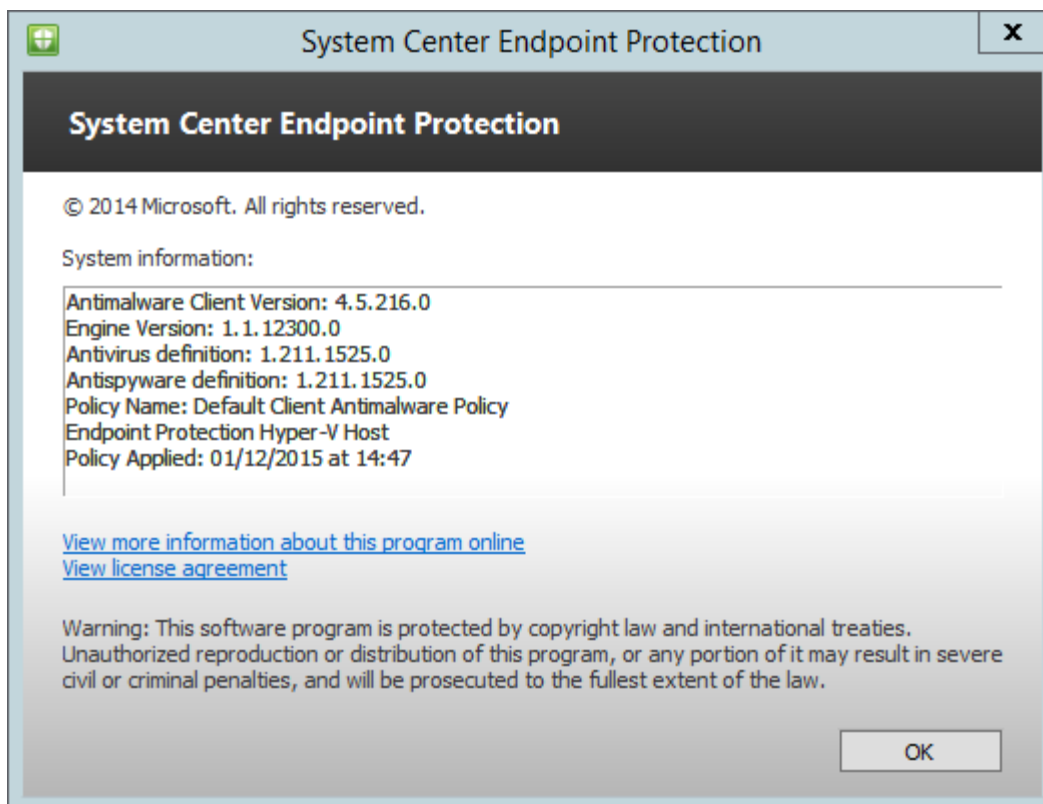
Asset Details

Filter

Device	Last Status Time	Group Targeted	Description
DEMO-CM01...	26/04/2015 11:11	Yes	Package "INF00002" on distribution point "[Display=\\DEMO-CM01.infdemo.com\]MSWNET:["

Chapter 6

Name	Type	Data
 (Default)	REG_SZ	(value not set)
 AdminUILog	REG_SZ	C:\Program Files\SMS_CCM\CMApplicationCatalogSvc\Logs\
 LogMaxHistory	REG_DWORD	0x00000001 (1)
 MaxFileSize	REG_DWORD	0x007a1200 (8000000)



Enrollment Profile



Create or select an enrollment profile for mobile devices or Mac computers. Users associated with a profile can enroll their mobile devices and Mac computers to be managed by Configuration Manager. An enrollment profile defines the site that manages the mobile device or Mac computers and the certificate details used for enrollment and renewal.

Enrollment profiles for mobile devices or Mac computers:

Filter...	
Name	
Mobile Device Enrollment	
Mac Enrollment	

Create...

Edit Selected ...

Delete Selected

Details:

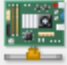
Profile Name: Mac Enrollment	^
Description: Enrollment Profile for Apple Macs	
Assigned Site Code: INF	
Certification Authority: DEMO-DC01.infdemo.com\infdemo-CA	
Certificate Template: Mac Enrollment	

OK

Cancel

Out of Band Management Component Properties

General | **AMT Settings** | Provisioning | 802.1X and Wireless

 Out of Band Management Configuration

Specify the settings for Intel AMT-based computers to be managed out of band.

During AMT provisioning, Configuration Manager creates computer accounts in an organizational unit (OU) and adds the accounts to a universal security group.

Out of band service point:

Enrollment point: ▾

OU for AMT-based computer accounts:

Universal security group for AMT-based computer accounts:

AMT web server certificate template:

Enable CRL checking for the AMT web server certificate

MEBx Account:

Reporting

Navigation Index

Reports: View and manage reports, create report subscriptions, and configure report options.

Subscriptions: View and manage report subscriptions.

Links

Use the following links to connect directly to SQL Reporting Services:

Report Manager

<http://demo-cm01/Reports> (Default)

Report Server

<http://demo-cm01/ReportServer> (Default)

Service connection point Properties

General

Select a mode for the service connection point:

Service connection point mode

Online, persistent connection (recommended)

Creates a persistent connection to the Configuration Manager cloud service and proactively notifies you of updates. This option enables the connection point to automatically query for and download Configuration Manager updates, which you can then choose to install.

Offline, on-demand connection

Requires you to run the Service Connection Tool to set the initial configuration of the role and configure notifications.

[Learn more about service connection point role and its modes](#)

OK Cancel Apply

Usage Data



Select which level of data you would like to send Microsoft.

Basic

This level includes data about your hierarchy and is required to help improve your installation or upgrade experience, as well as help determine which Configuration Manager updates are applicable. Examples of data collected includes site data (operating system version, time zone), site roles (site #, SSL State), database performance metrics (CPU count), and the Configuration Manager features that are enabled.

Enhanced

This level includes data collected in the "Basic" level as well as feature-specific data (frequency and duration of use), Configuration Manager client settings (component name, state and certain settings like polling intervals), and basic information about software updates. This level is recommended because it provides Microsoft with the minimum data required to make useful improvements in future versions of products and services. This level does not collect object names (sites, users, computer, or objects), details of security-related objects, or vulnerabilities like counts of systems requiring software updates.

Full

The "Full" level includes all data collected in "Basic" and "Enhanced" levels. This level also collects additional information about endpoint protection (number of devices in different EP states), update compliance percentages, and software updates. This level can also include advanced diagnostic information like system files and memory snapshots which may include personal information that existed in memory or log files at the time of capture. Microsoft will not use this information to identify you, contact you, or for advertising purposes.

[Learn more about Usage Data levels and settings](#)

[Privacy Statement for Configuration Manager](#)

OK

Cancel

Software Update Point Component Properties ✕

Sync Settings | Classifications | Products | Sync Schedule | Supersedence Rules | Languages

Select the synchronization source for this software update point.

Synchronize from Microsoft Update
When there is an upstream software update point, this option is unavailable.

Synchronize from an upstream data source location (URL)
Example: <http://WSUSServer:80> or <https://WSUSServer:8531>

Do not synchronize from Microsoft Update or upstream data source
Select this option if you manually synchronize software updates on this software update point. Typically, you use manual synchronizing when the software update point is disconnected from Microsoft Update or the upstream software update point.

WSUS reporting events

You can configure the Windows Update Agent on client computers to create event messages for Windows Server Update Services (WSUS) reporting. Configuration Manager does not use these events, you should not create them unless you require them for other uses.

Do not create WSUS reporting events

Create only WSUS status reporting events

Create all WSUS reporting events

State migration point Properties

General | **Boundary Groups**

A state migration point stores user state data when a computer is migrated to a new operating system.

Folder details:

Storage Folder	Maximum Number of Clients	Minimum Free Space
D:\StateMigration	100	100 MB

Deletion policy
Specify when to remove data that is marked for deletion.

Immediately

Delete after:


Restore-only mode
Enable restore-only mode to prevent additional user state from being added on the state migration point. This is useful when a state migration point is being decommissioned but still has state data stored on it.

Enable restore-only mode

OK Cancel Apply

System Health Validator Point Component Properties [X]

General | **Health State Reference**

 System Health Validator Point

Specify the settings for System Health Validator points. These settings are used by all System Health Validator points in this Configuration Manager site.

Active Directory query interval
Specify how often System Health Validator points retrieve health state references.

Query interval (minutes):

Statement of health time validation
Specify time parameters for client statements of health.

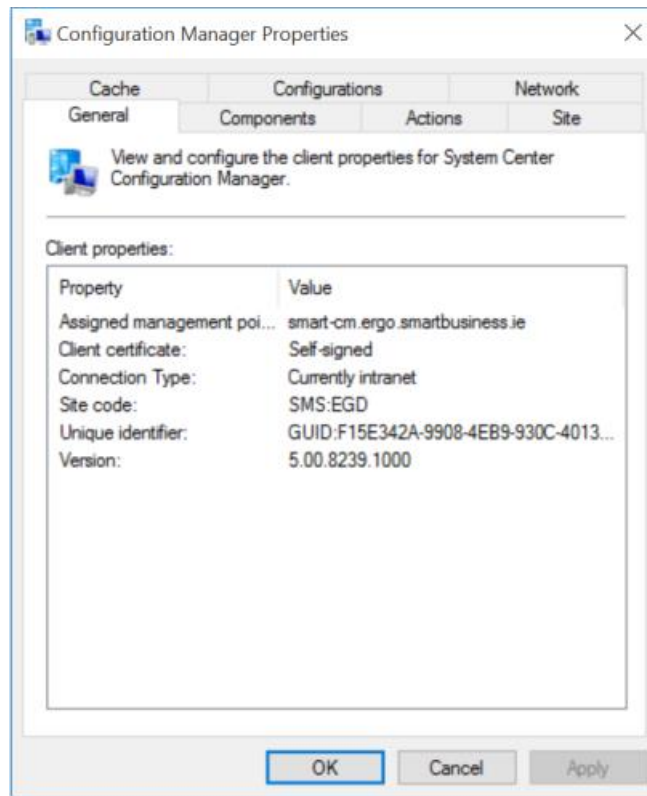
Validity period (hours):

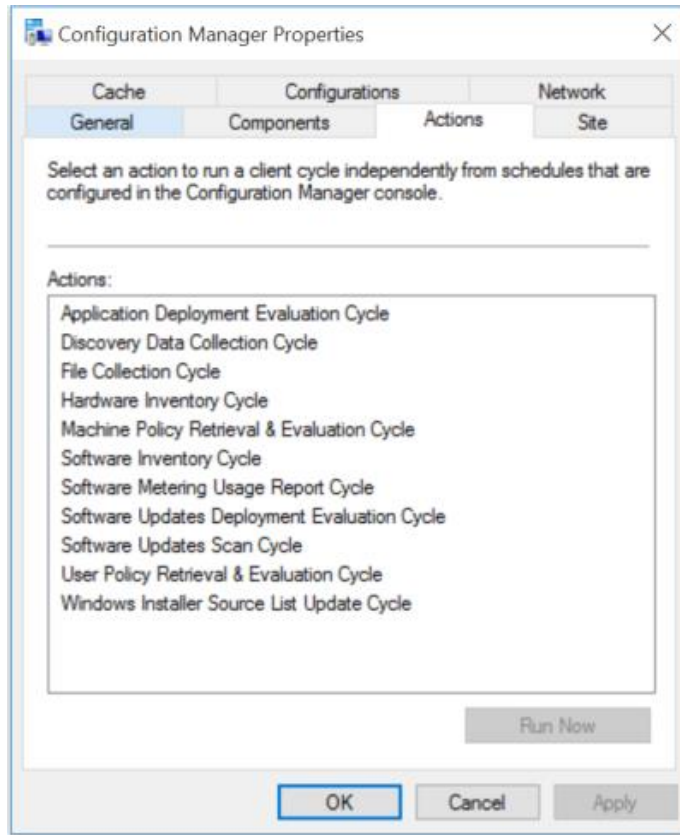
Date created must be after (UTC):

Specify the current or a previous date and time.

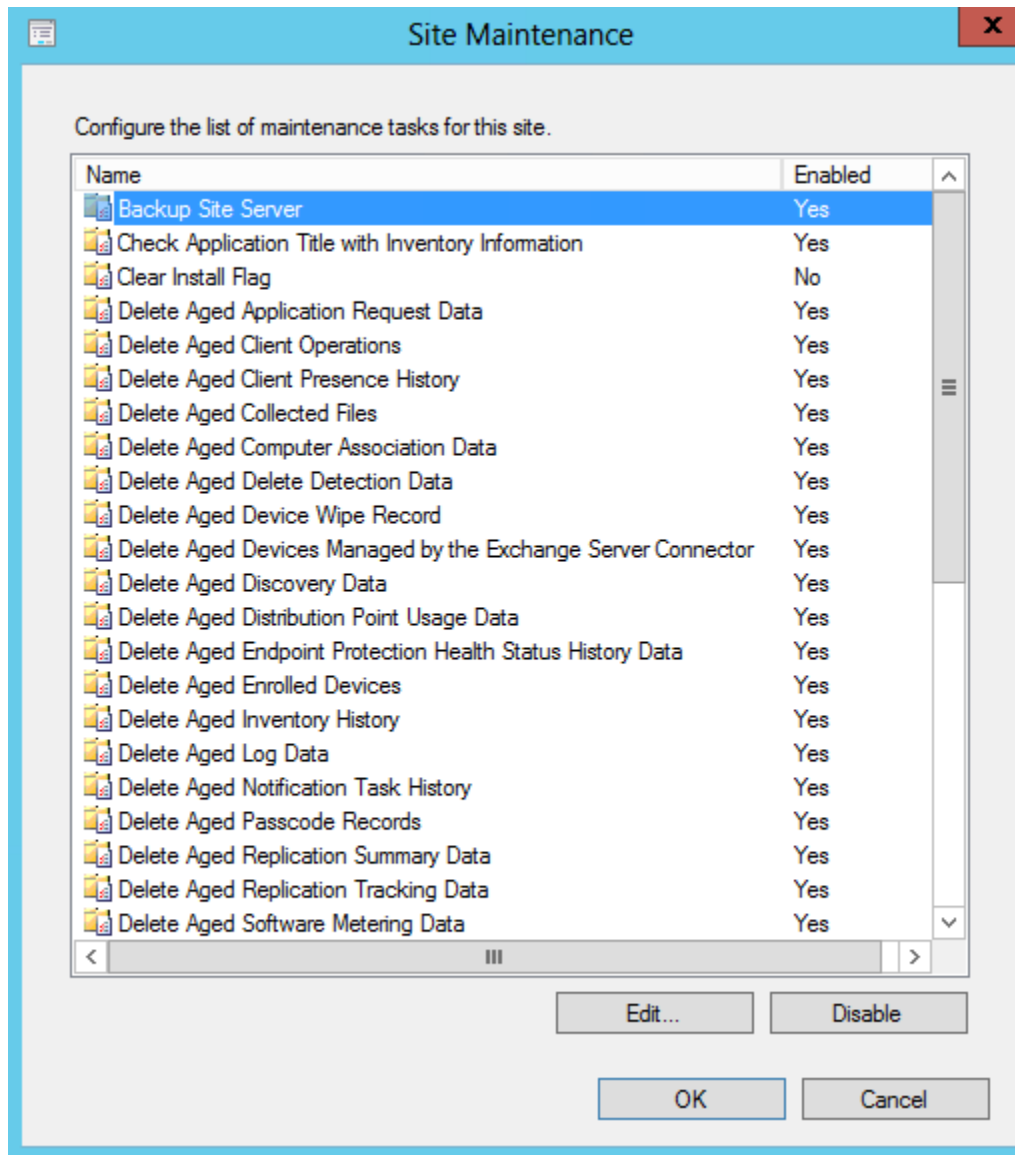
OK Cancel Apply

Chapter 7





Chapter 8



Backup Site Server Properties

General

This task backs up the site database and important site server information.

Enable this task Set Paths...

Backup destination:

Schedule

Start after:
 Monday
 Tuesday
 Wednesday
 Thursday
 Friday
 Saturday
 Sunday

Latest start time:

Enable alerts for backup task failures

i For additional information about data not included in the Configuration Manager backup and recovery process, see the [product documentation online](#).

Define Back Up Database (Full) Task

Configure the maintenance task.

Backup type:

Databases:

Backup component

Database

Files and filegroups

Copy-only Backup

For availability databases, ignore Replica Priority for Backup and Backup on Primary Settings

Backup set will expire:

After days

On

Back up to: Disk Tape

Back up databases across one or more files:

If backup files exist:

Create a backup file for every database

Create a sub-directory for each database

Folder:

Backup file extension:

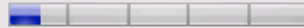
Verify backup integrity

Set backup compression:

Schedule

Change...

Site Server and Database Recovery Options



You can recover a site server from an existing Configuration Manager backup set or reinstall the site server. If setup has detected an existing site installation on this computer, site server recovery settings are disabled.

- Recover this site server using an existing backup

Example: \\Fileserver\Backupshare\XYZBackup or Z:\Backup\XYZBackup

Path:



Browse...

- Reinstall this site server

You can recover the site database from an existing Configuration Manager backup set or create a new database for this site. Alternatively, you can specify that the site database was manually recovered by using a different method, or you can skip database recovery when the site database was unaffected by the disaster.

- Recover the site database using the backup set at the following location:

Example: \\Fileserver\Backupshare\XYZBackup or Z:\Backup\XYZBackup

Path:



Browse...

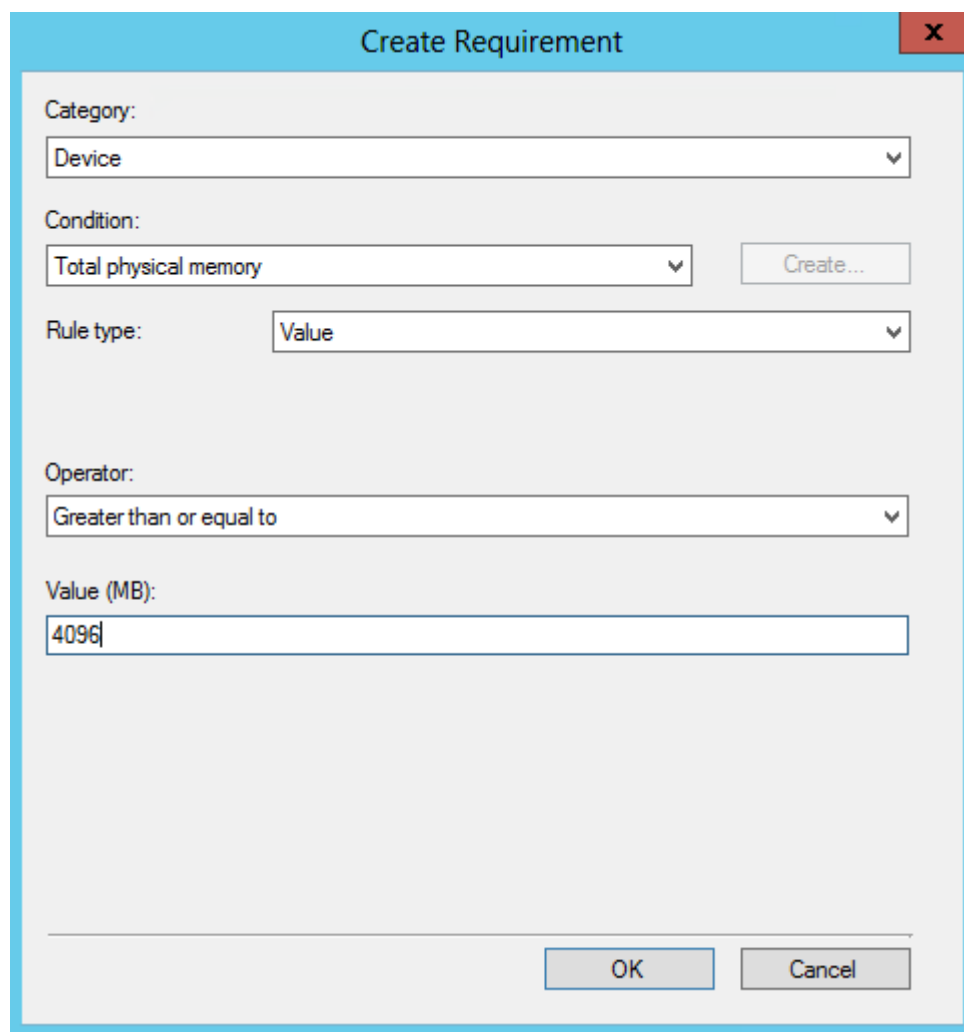
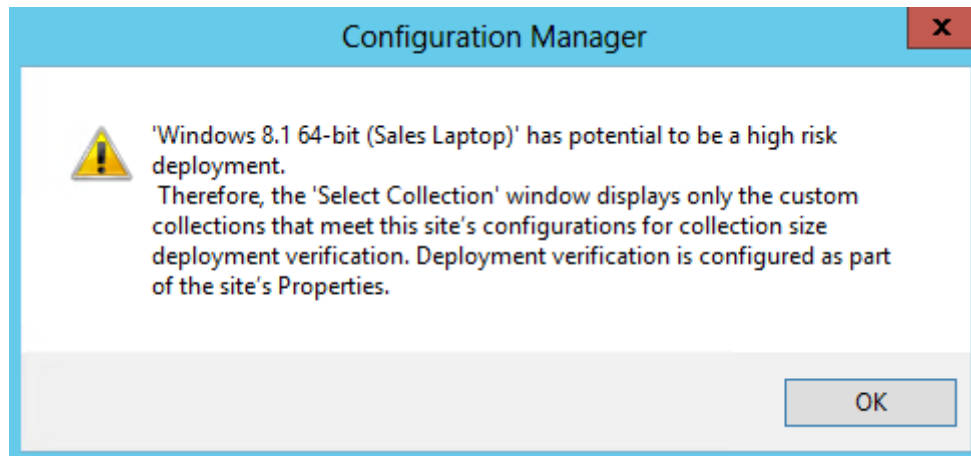
- Create a new database for this site
- Use a site database that has been manually recovered
- Skip database recovery (Use this option if the site database was unaffected)

< Previous

Next >

Cancel

Chapter 9



<new> Schedule X

Name:

Time

Effective date:

Start: End:

Duration:

Coordinated Universal Time (UTC)

Recurrence pattern

Configure the recurrence schedule.

None
 Monthly
 Weekly
 Daily

Recur every: months on:
 Day
 The last day of the month
 The

Apply this schedule to:



```
SQLQuery1.sql - (I...GO\admingerry (89))* x
DBCC Showcontig
100 %
Messages
- Extents Scanned.....: 0
- Extent Switches.....: 0
- Avg. Pages per Extent.....: 0.0
- Scan Density [Best Count:Actual Count].....: 100.00% [0:0]
- Extent Scan Fragmentation .....: 0.00%
- Avg. Bytes Free per Page.....: 0.0
- Avg. Page Density (full).....: 0.00%
DBCC SHOWCONTIG scanning 'spt_fallback_usg' table...
Table: 'spt fallback use' (149575571): index ID: 0. database ID
```

```
PS C:\Users\admingerry> get-help Invoke-WsusServerCleanup
NAME
    Invoke-WsusServerCleanup
SYNTAX
    Invoke-WsusServerCleanup [-UpdateServer <UpdateServer>] [-CleanupObsoleteComputers] [-CleanupObsoleteUpdates]
    [-CleanupUnneededContentFiles] [-CompressUpdates] [-DeclineExpiredUpdates] [-DeclineSupersededUpdates] [-WhatIf]
    [-Confirm] [<CommonParameters>]
```