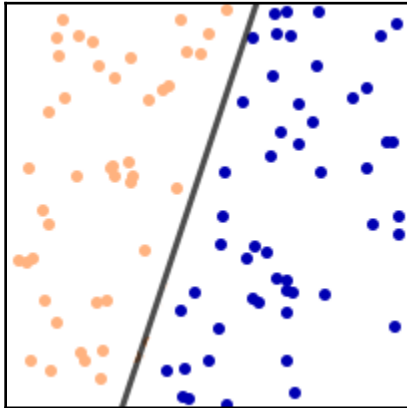
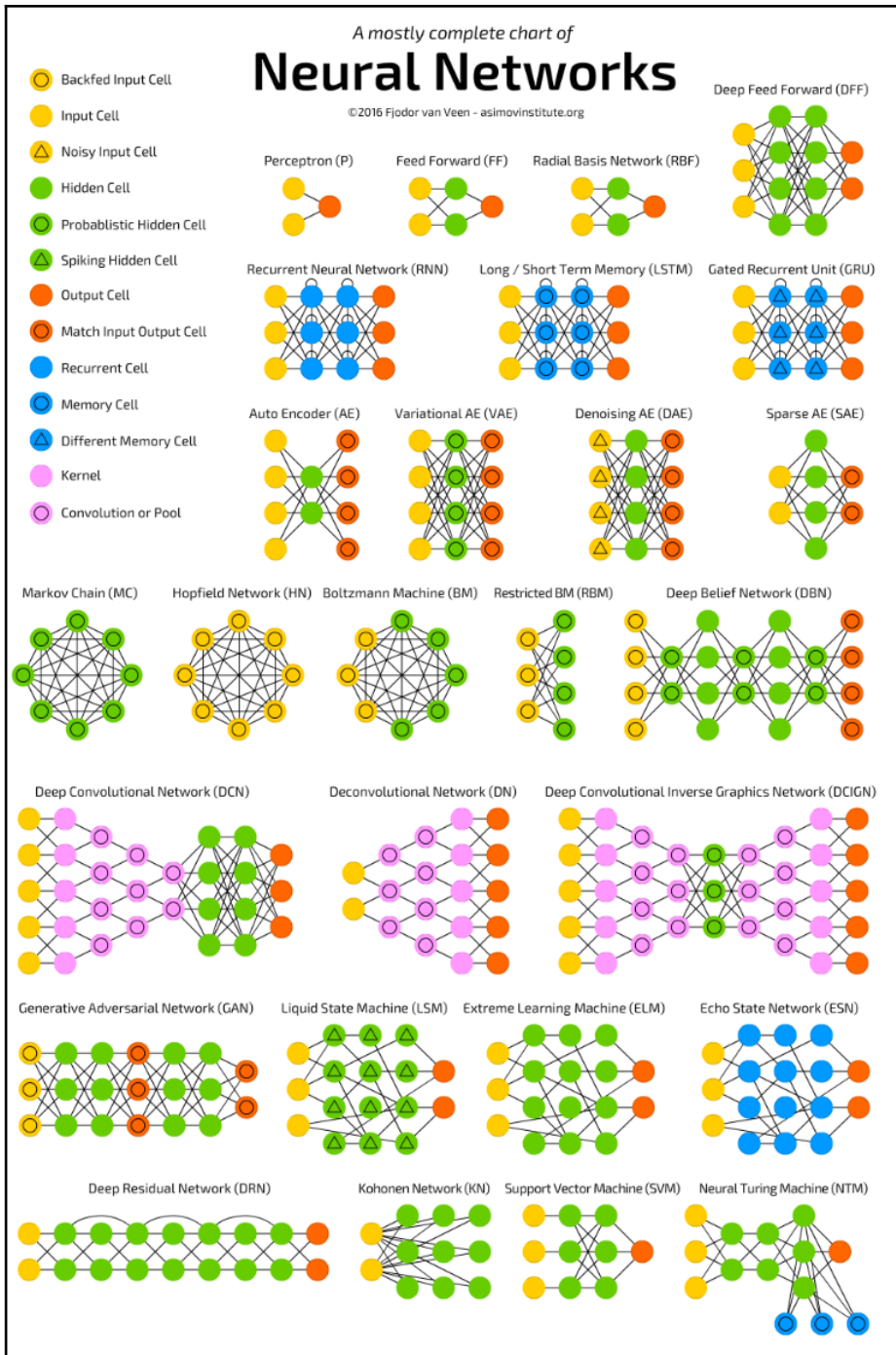


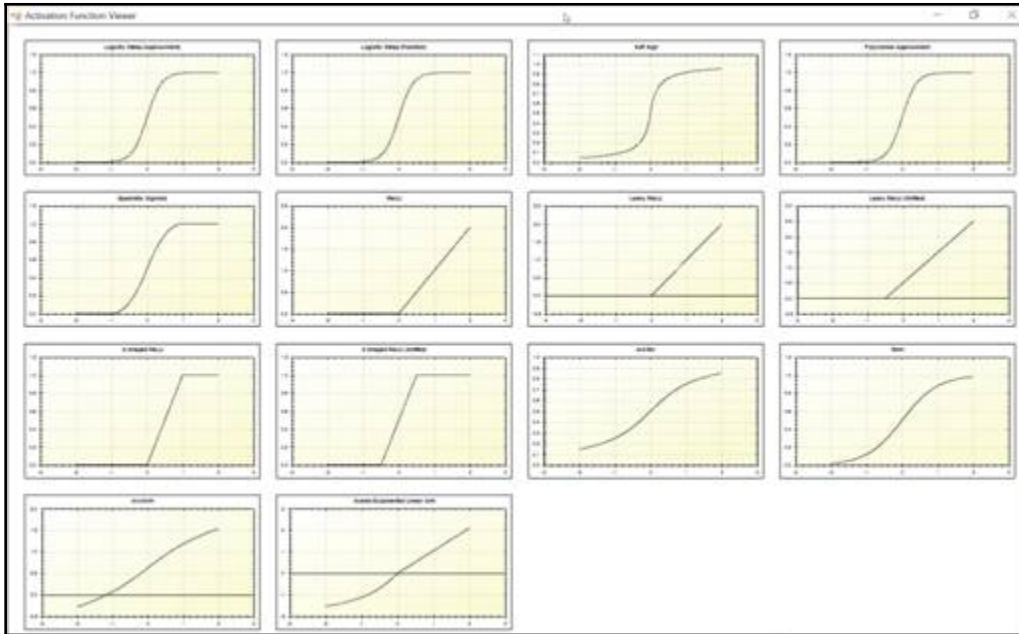
1

Graphic bundle

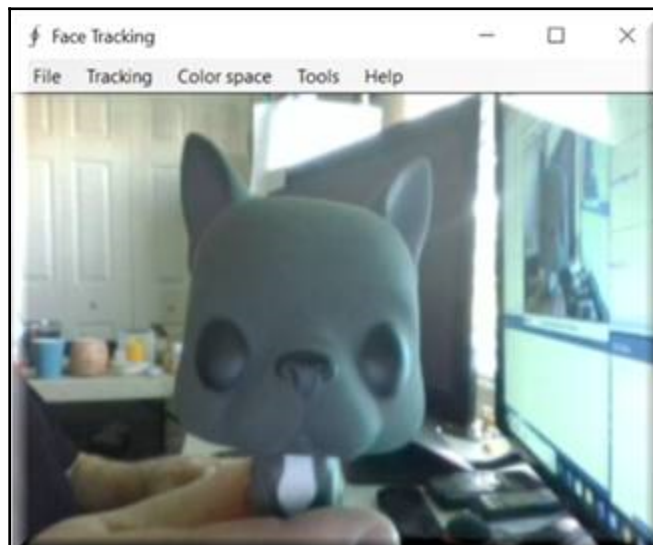
Chapter 1: A Quick Refresher

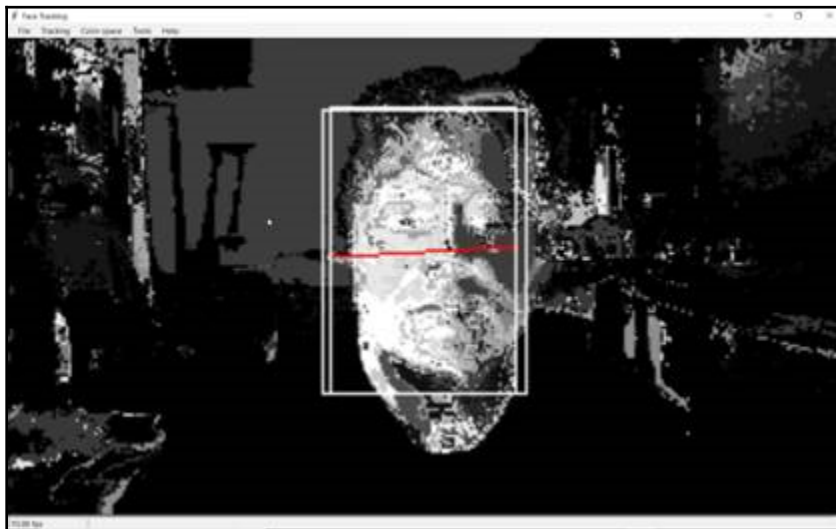
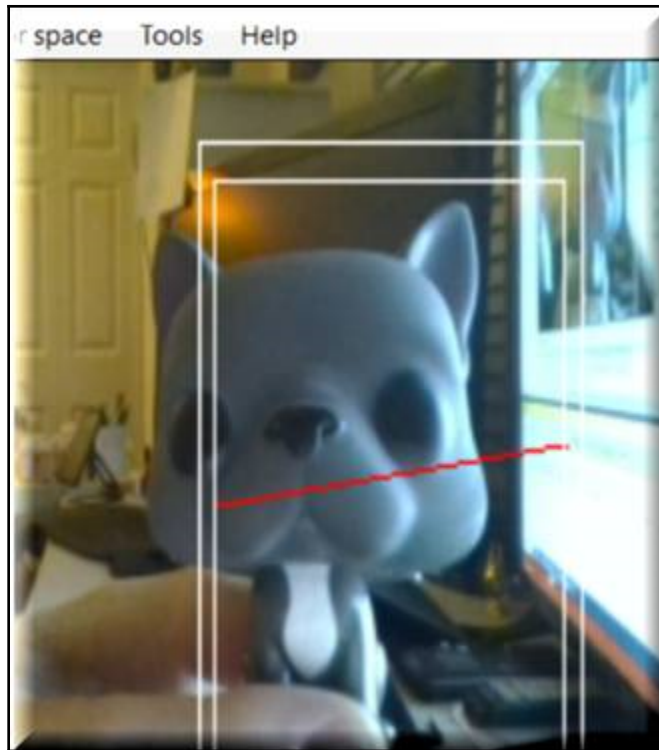


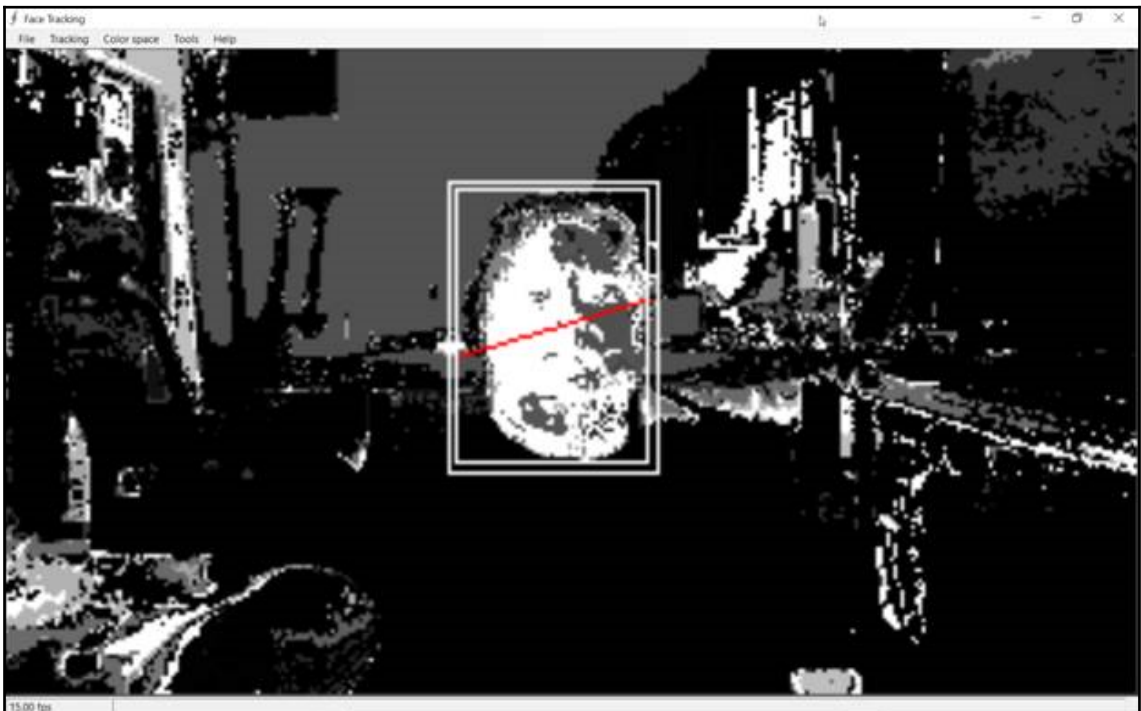
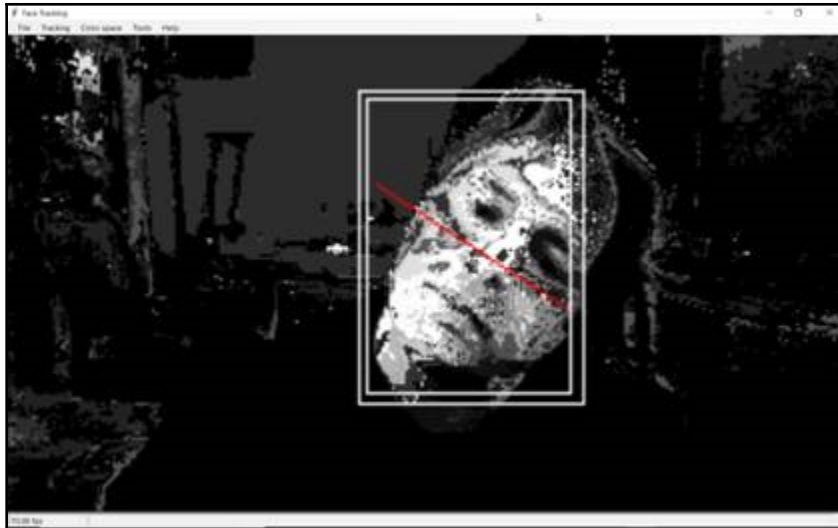


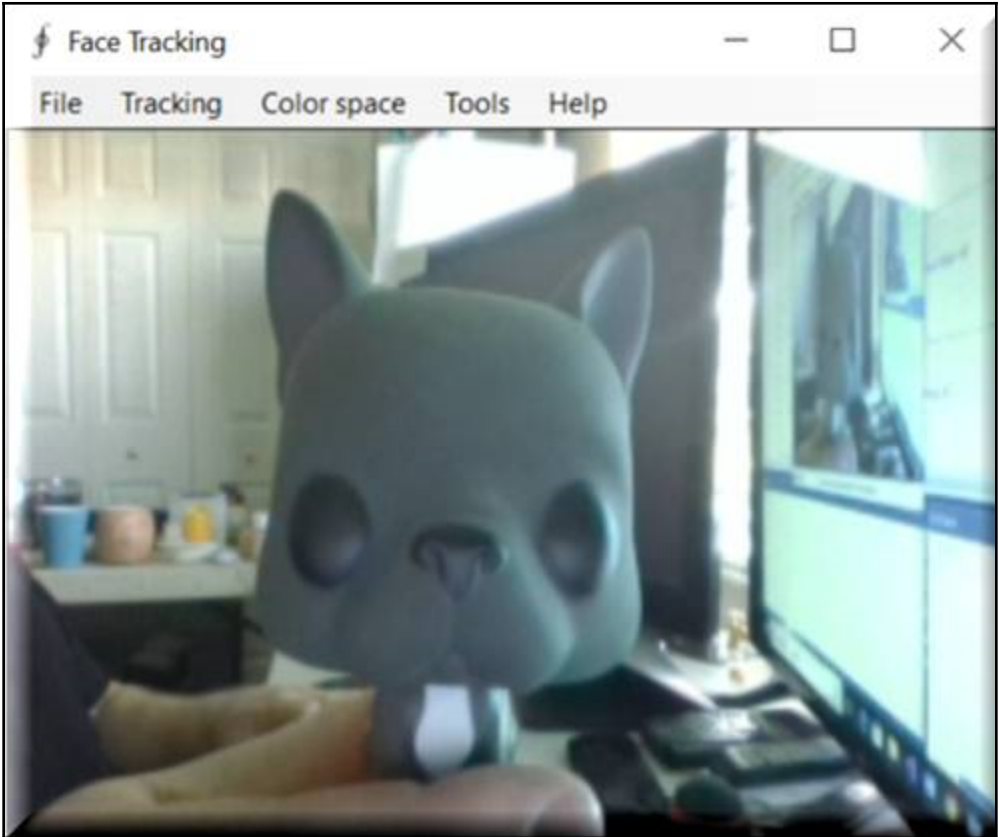


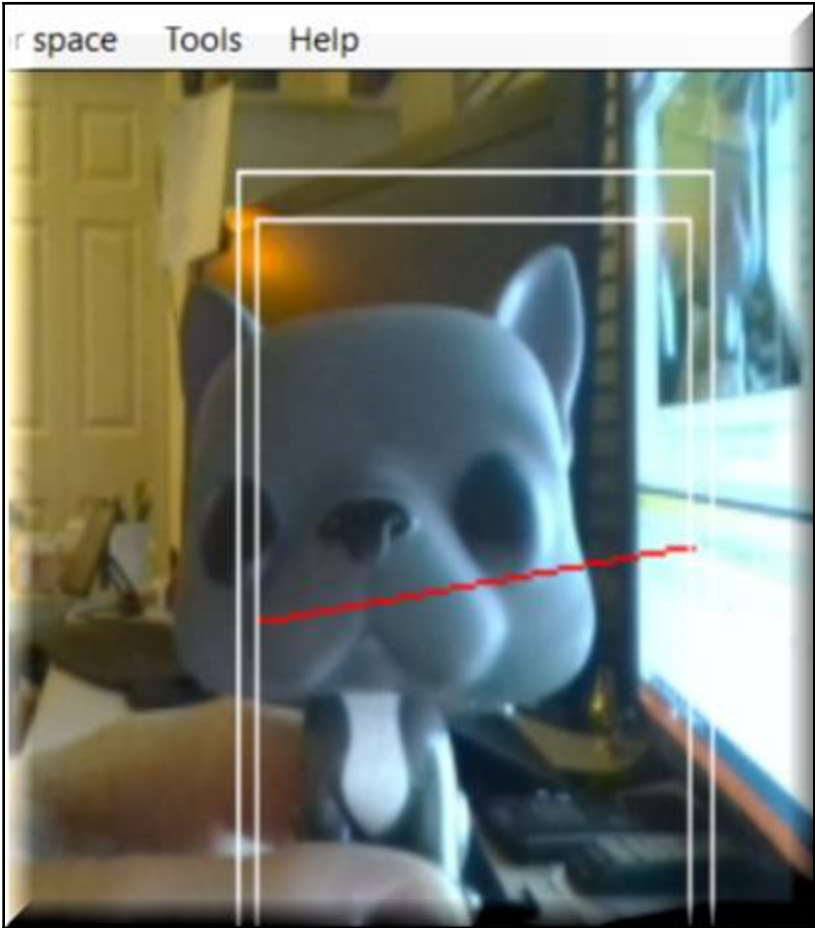
Chapter 4: Face and Motion Detection

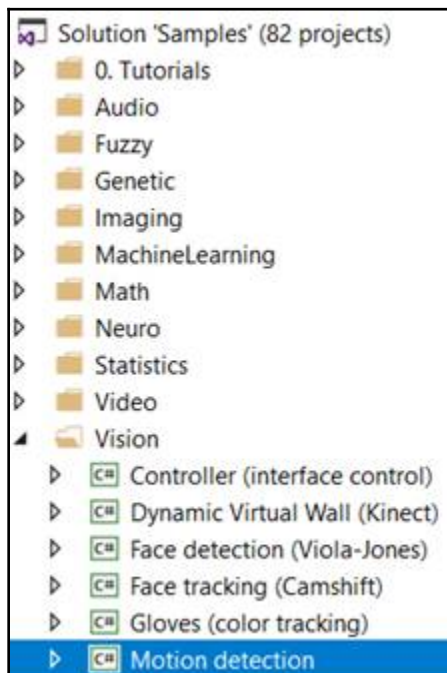




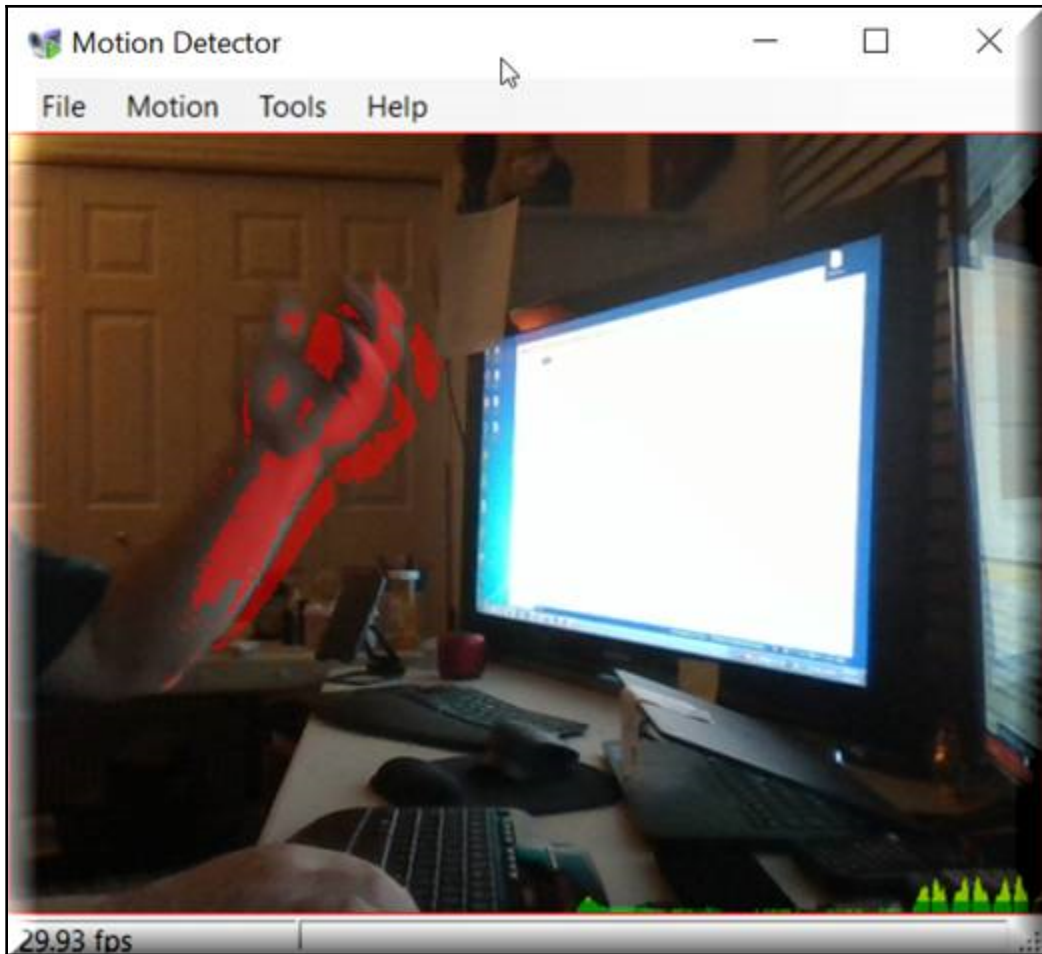


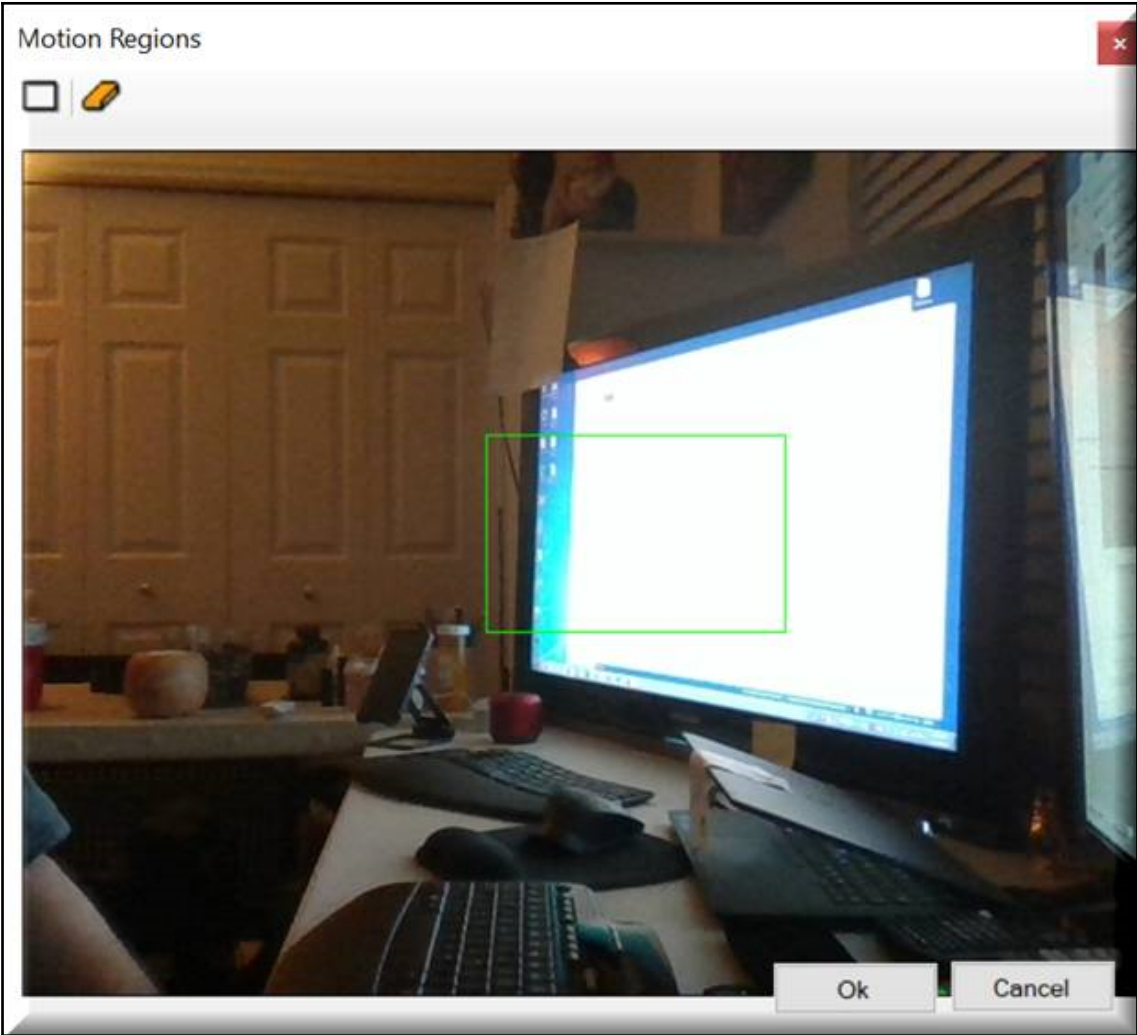


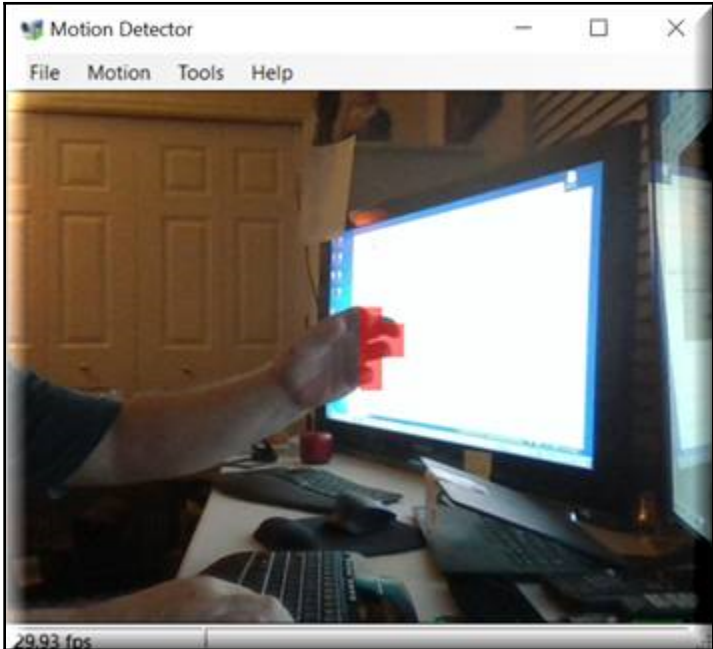


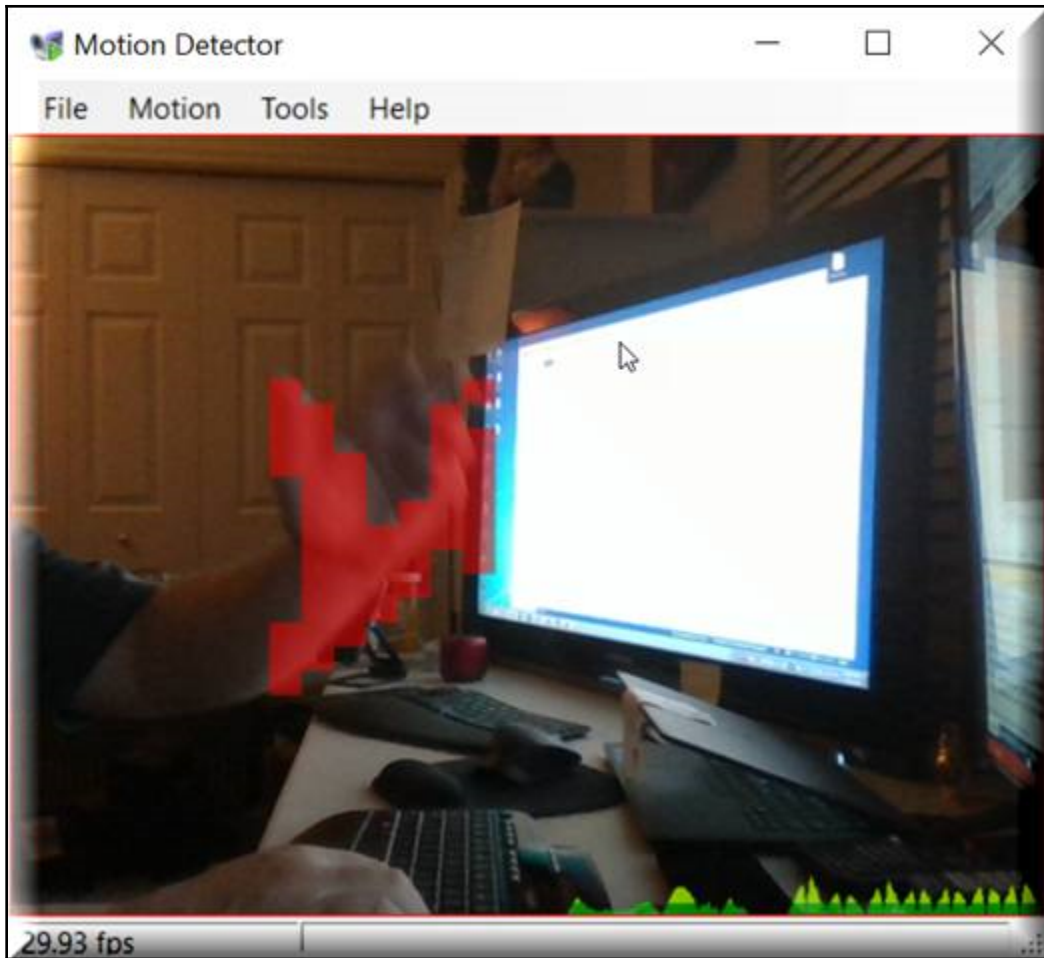




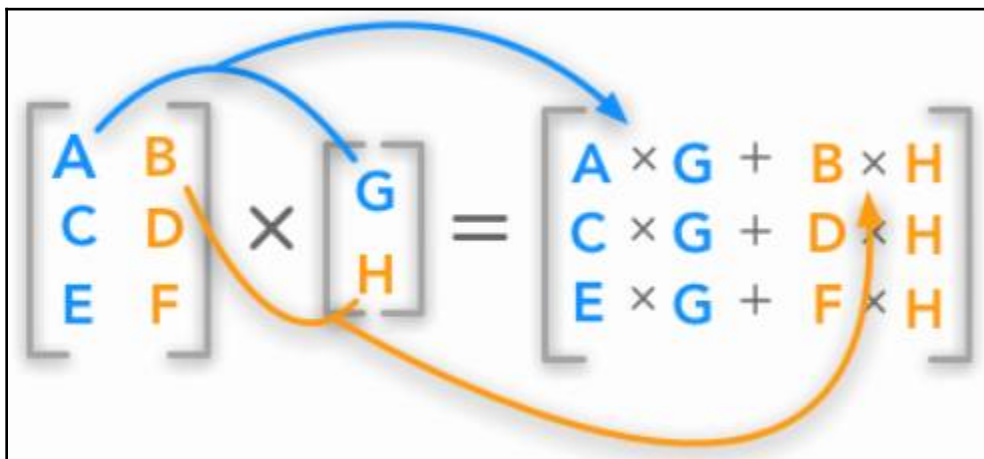
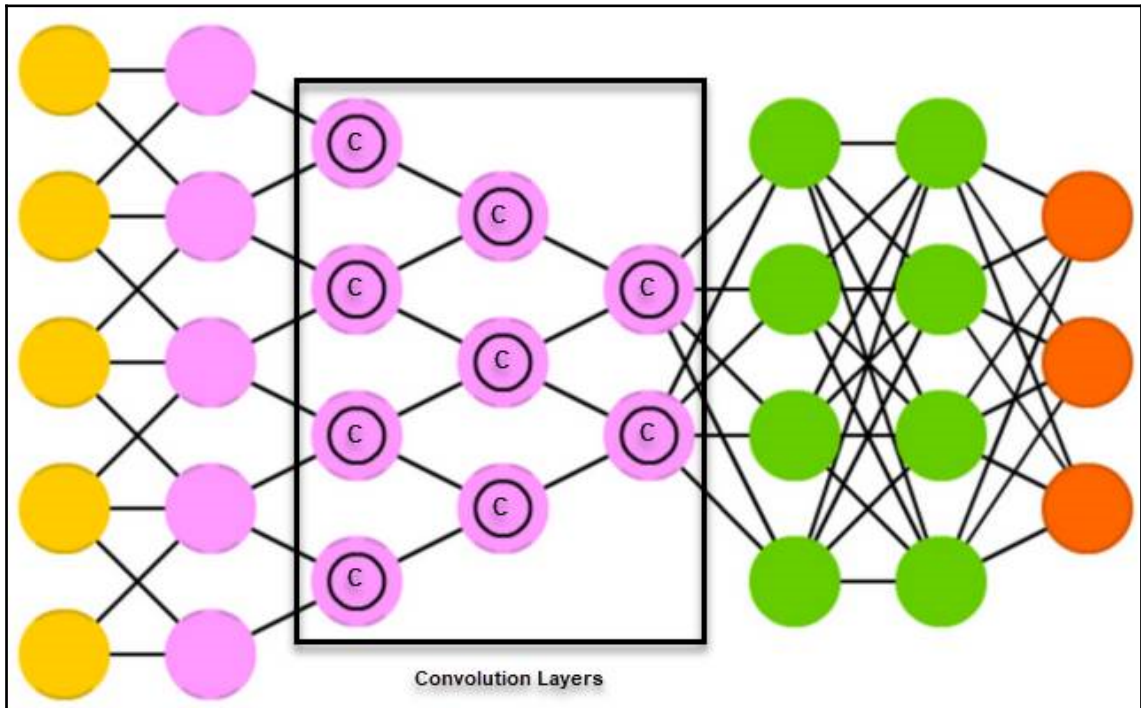


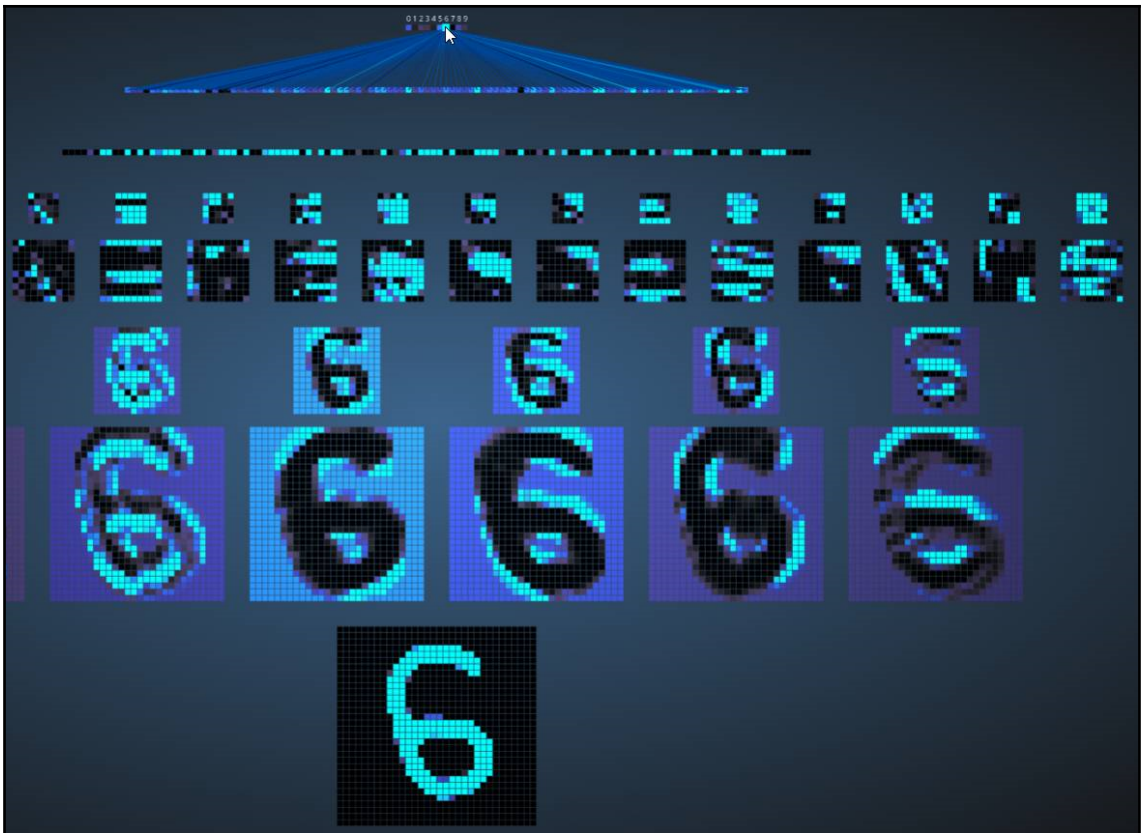


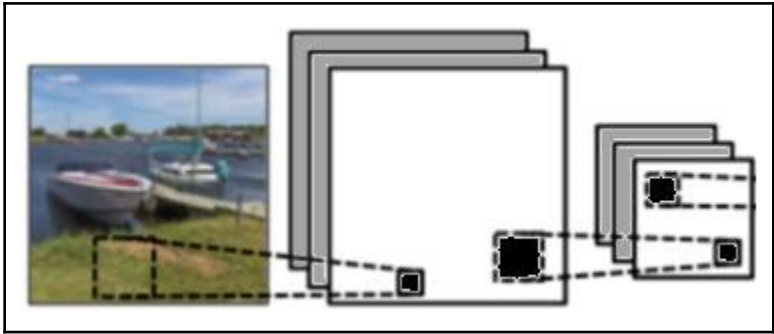
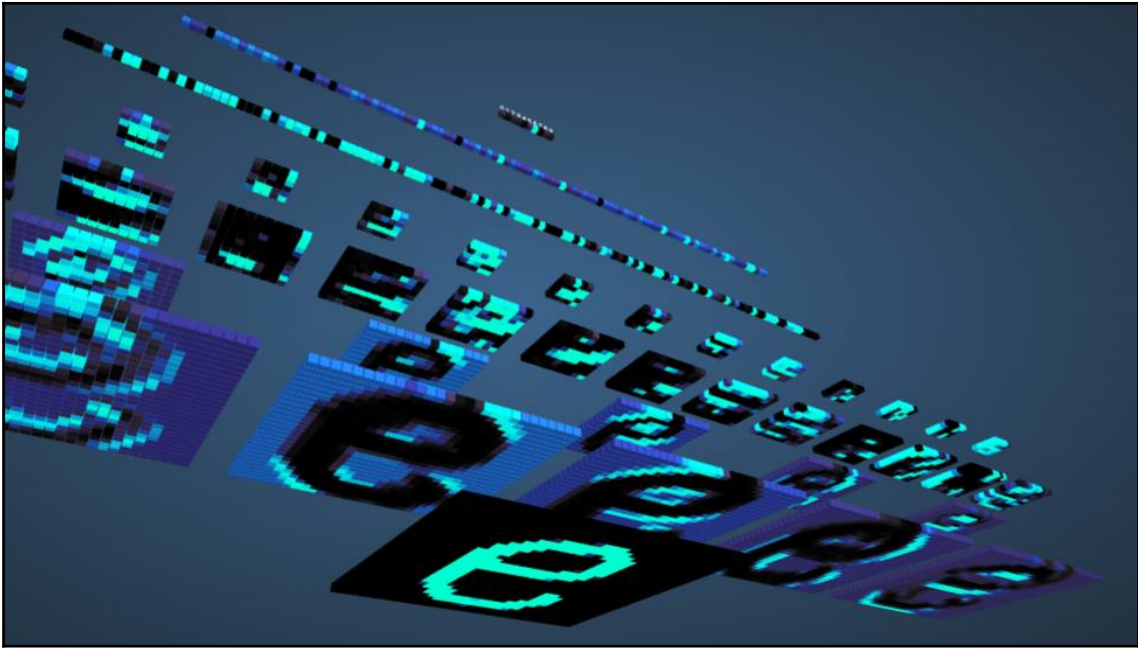


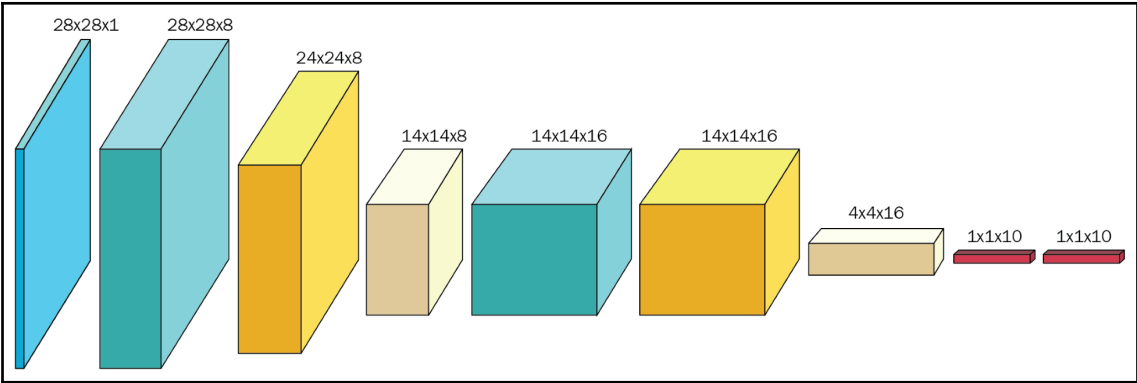


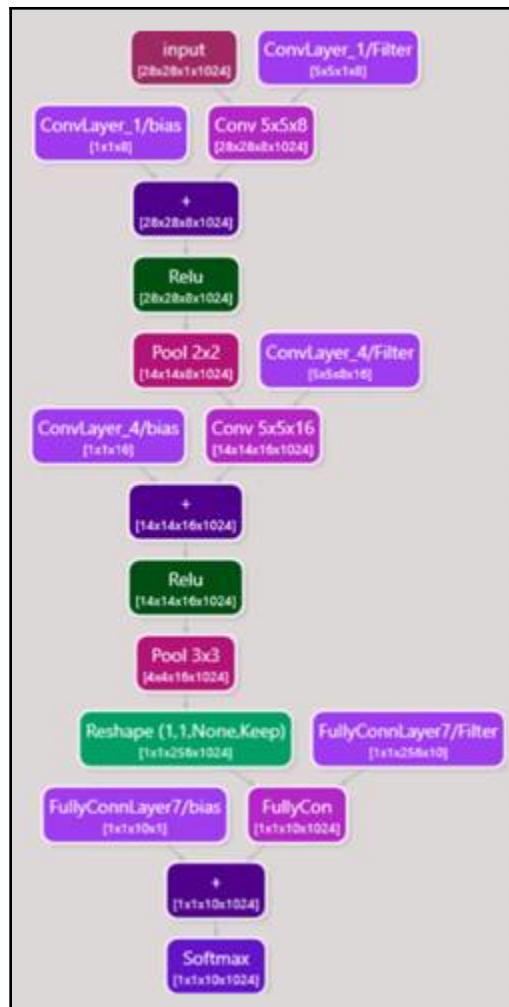
Chapter 5: Training CNNs using ConvNetSharp

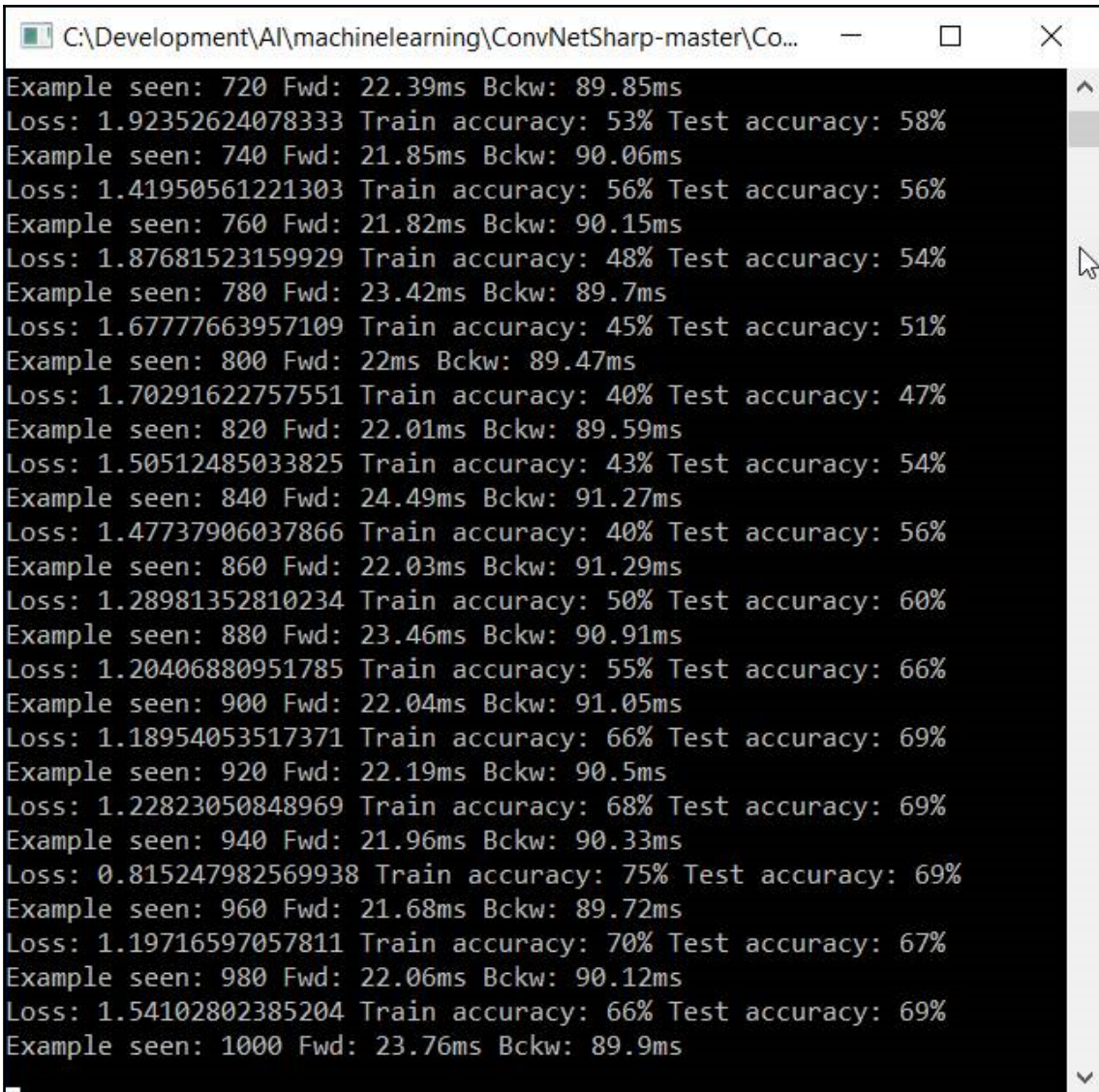




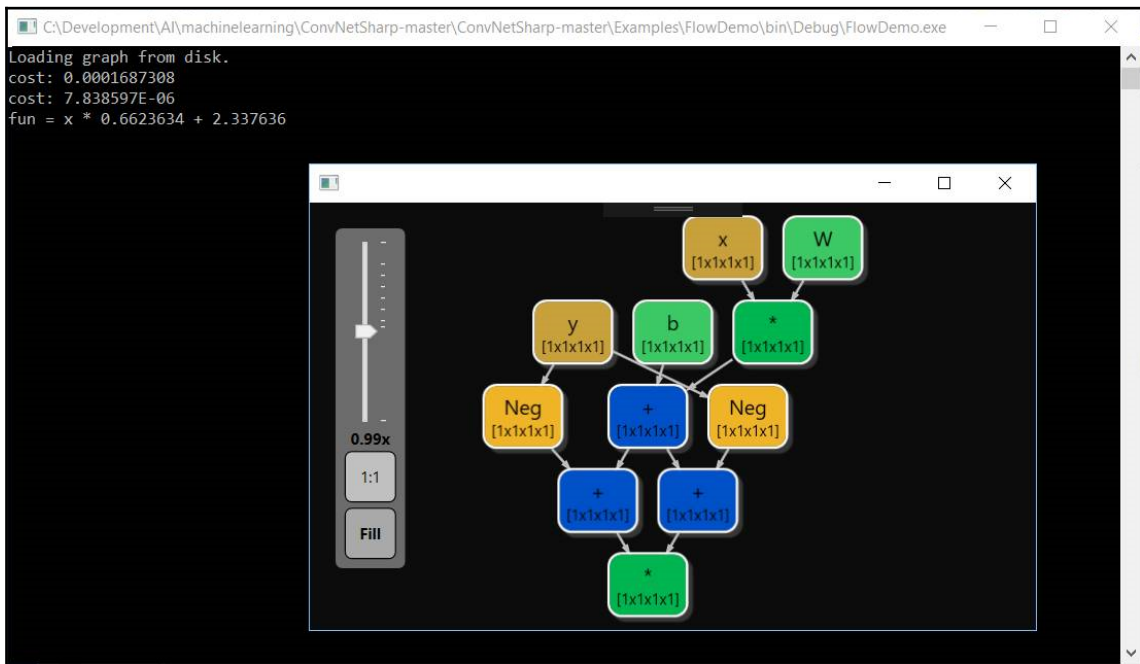
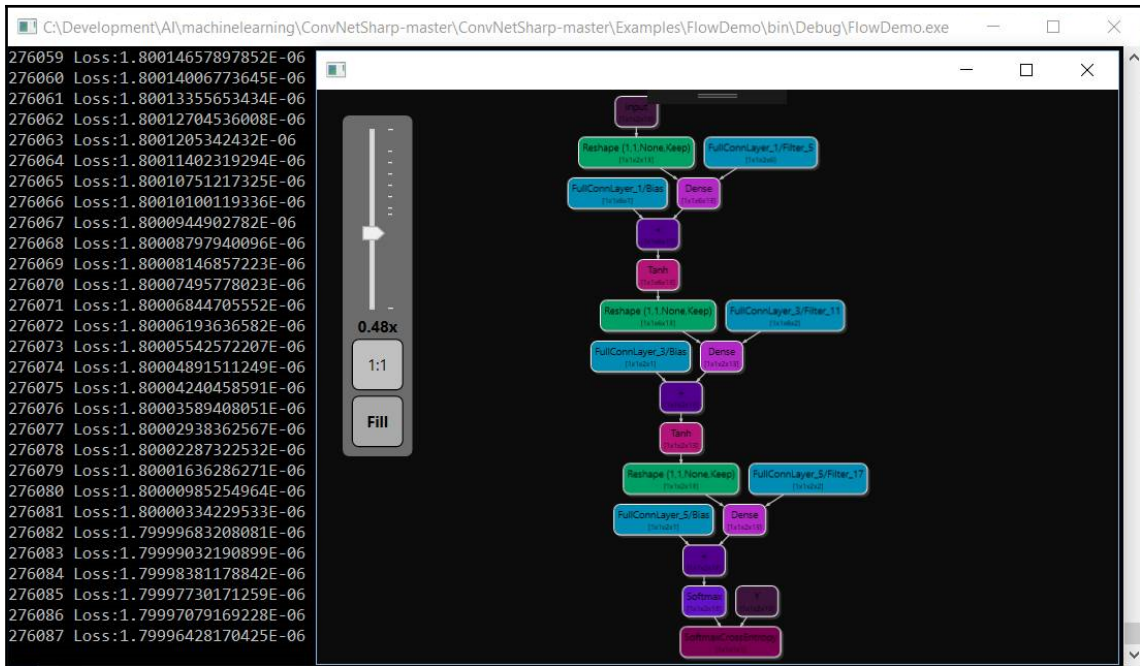




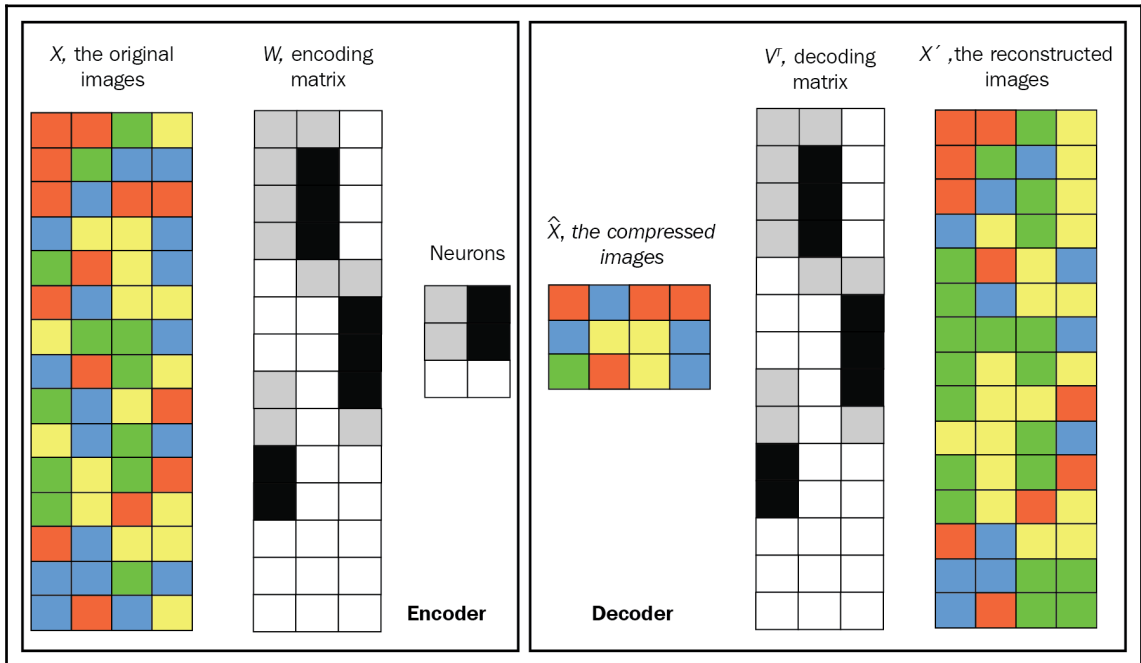


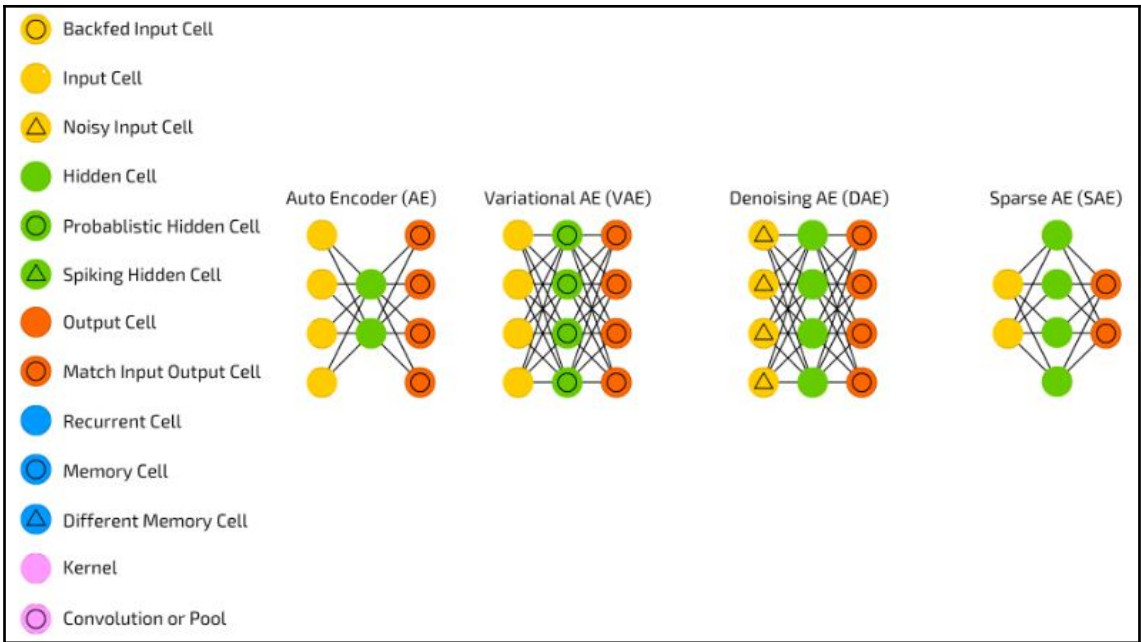


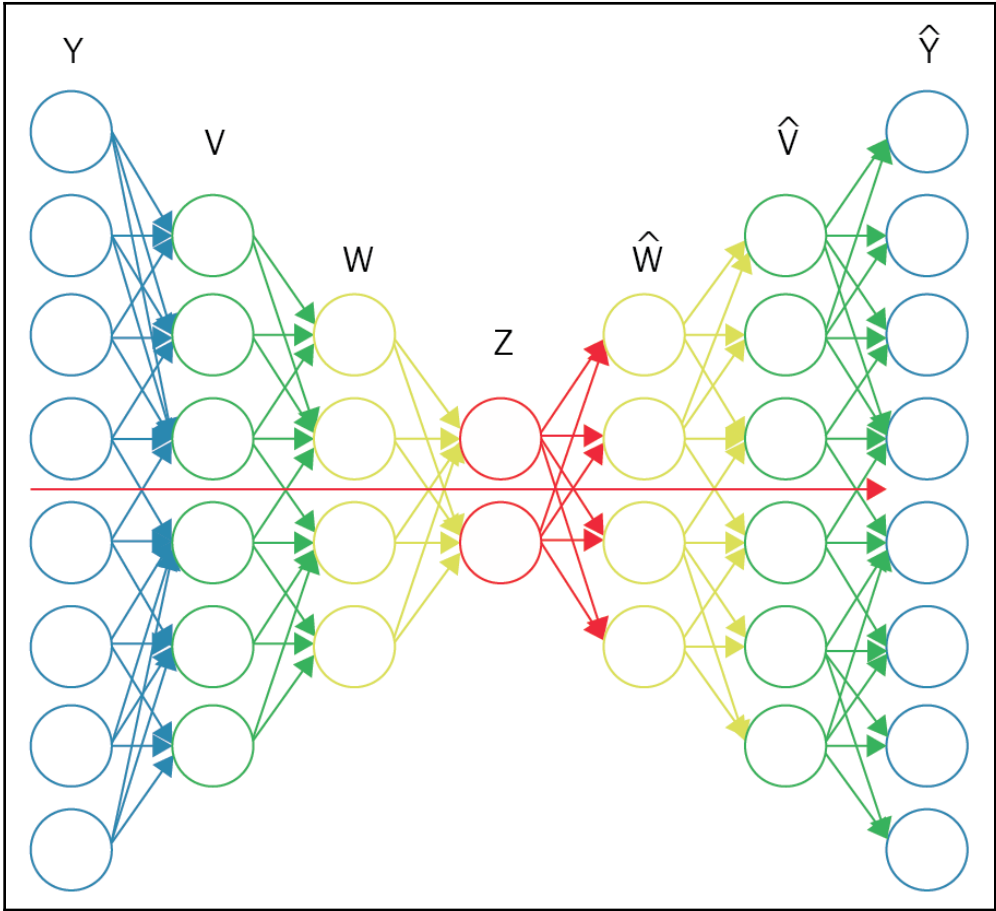
```
C:\Development\AI\machinelearning\ConvNetSharp-master\Co...
Example seen: 720 Fwd: 22.39ms Bckw: 89.85ms
Loss: 1.92352624078333 Train accuracy: 53% Test accuracy: 58%
Example seen: 740 Fwd: 21.85ms Bckw: 90.06ms
Loss: 1.41950561221303 Train accuracy: 56% Test accuracy: 56%
Example seen: 760 Fwd: 21.82ms Bckw: 90.15ms
Loss: 1.87681523159929 Train accuracy: 48% Test accuracy: 54%
Example seen: 780 Fwd: 23.42ms Bckw: 89.7ms
Loss: 1.67777663957109 Train accuracy: 45% Test accuracy: 51%
Example seen: 800 Fwd: 22ms Bckw: 89.47ms
Loss: 1.70291622757551 Train accuracy: 40% Test accuracy: 47%
Example seen: 820 Fwd: 22.01ms Bckw: 89.59ms
Loss: 1.50512485033825 Train accuracy: 43% Test accuracy: 54%
Example seen: 840 Fwd: 24.49ms Bckw: 91.27ms
Loss: 1.47737906037866 Train accuracy: 40% Test accuracy: 56%
Example seen: 860 Fwd: 22.03ms Bckw: 91.29ms
Loss: 1.28981352810234 Train accuracy: 50% Test accuracy: 60%
Example seen: 880 Fwd: 23.46ms Bckw: 90.91ms
Loss: 1.20406880951785 Train accuracy: 55% Test accuracy: 66%
Example seen: 900 Fwd: 22.04ms Bckw: 91.05ms
Loss: 1.18954053517371 Train accuracy: 66% Test accuracy: 69%
Example seen: 920 Fwd: 22.19ms Bckw: 90.5ms
Loss: 1.22823050848969 Train accuracy: 68% Test accuracy: 69%
Example seen: 940 Fwd: 21.96ms Bckw: 90.33ms
Loss: 0.815247982569938 Train accuracy: 75% Test accuracy: 69%
Example seen: 960 Fwd: 21.68ms Bckw: 89.72ms
Loss: 1.19716597057811 Train accuracy: 70% Test accuracy: 67%
Example seen: 980 Fwd: 22.06ms Bckw: 90.12ms
Loss: 1.54102802385204 Train accuracy: 66% Test accuracy: 69%
Example seen: 1000 Fwd: 23.76ms Bckw: 89.9ms
```



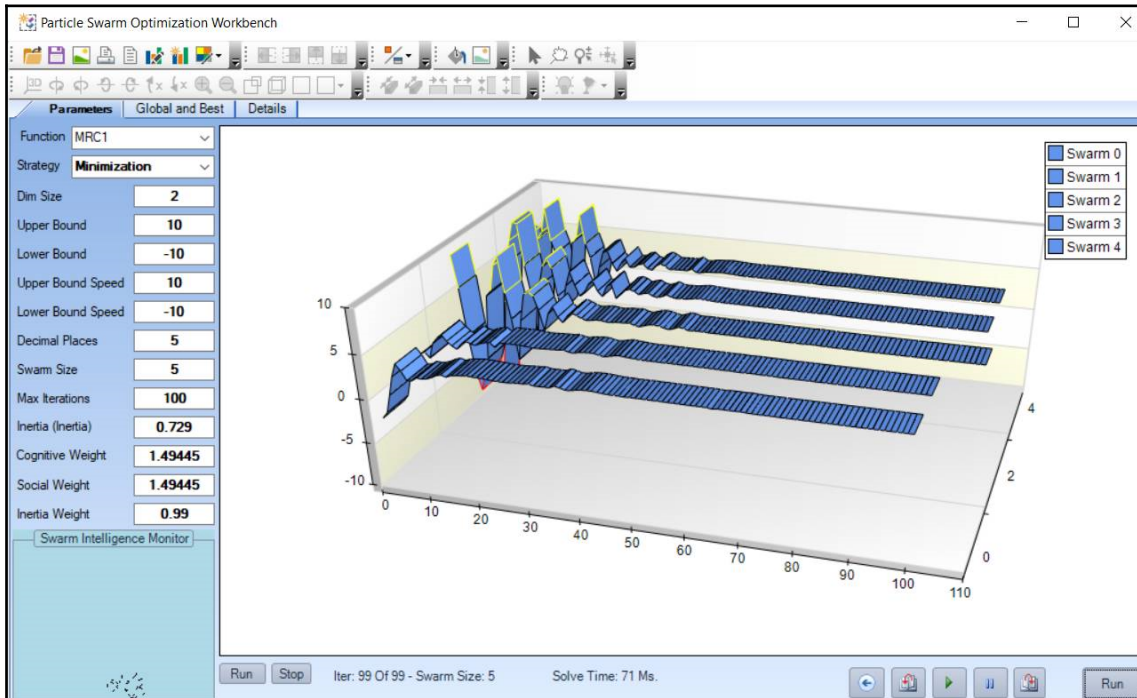
Chapter 6: Training Autoencoders Using RNNSharp

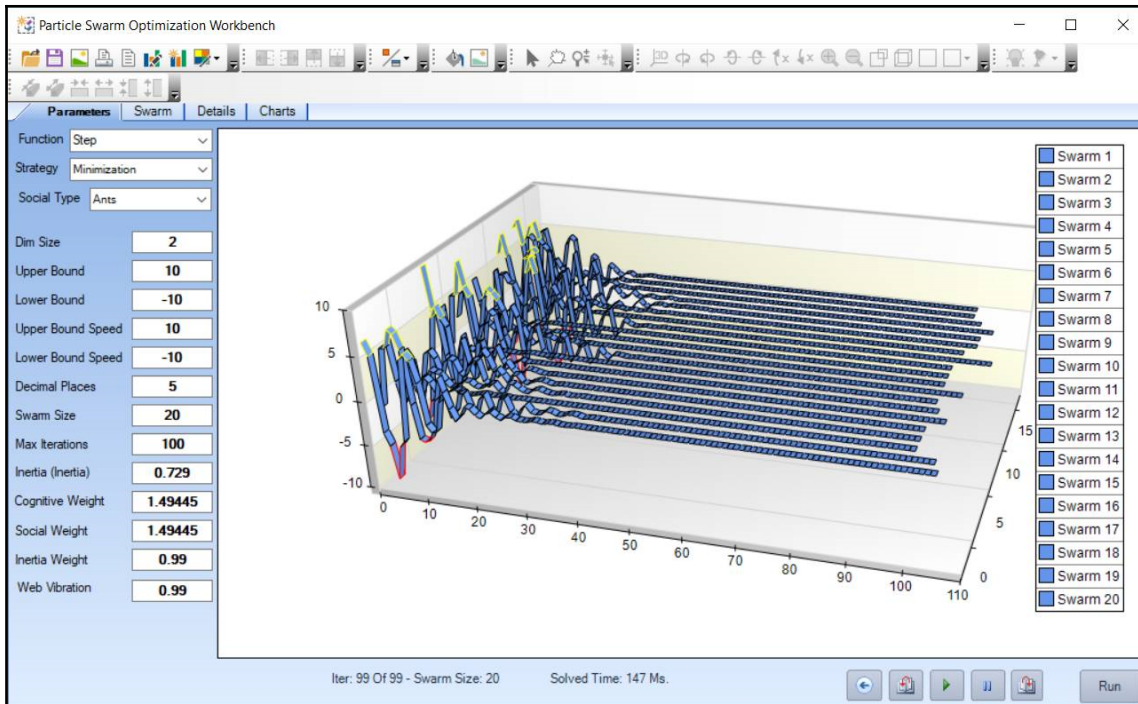


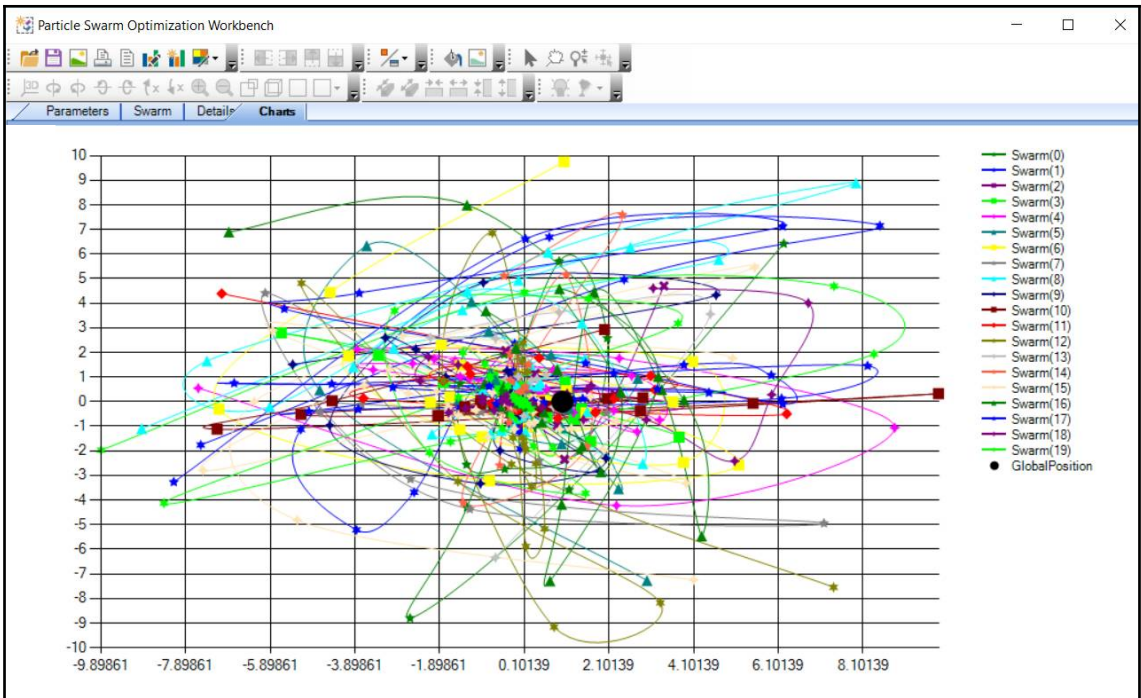


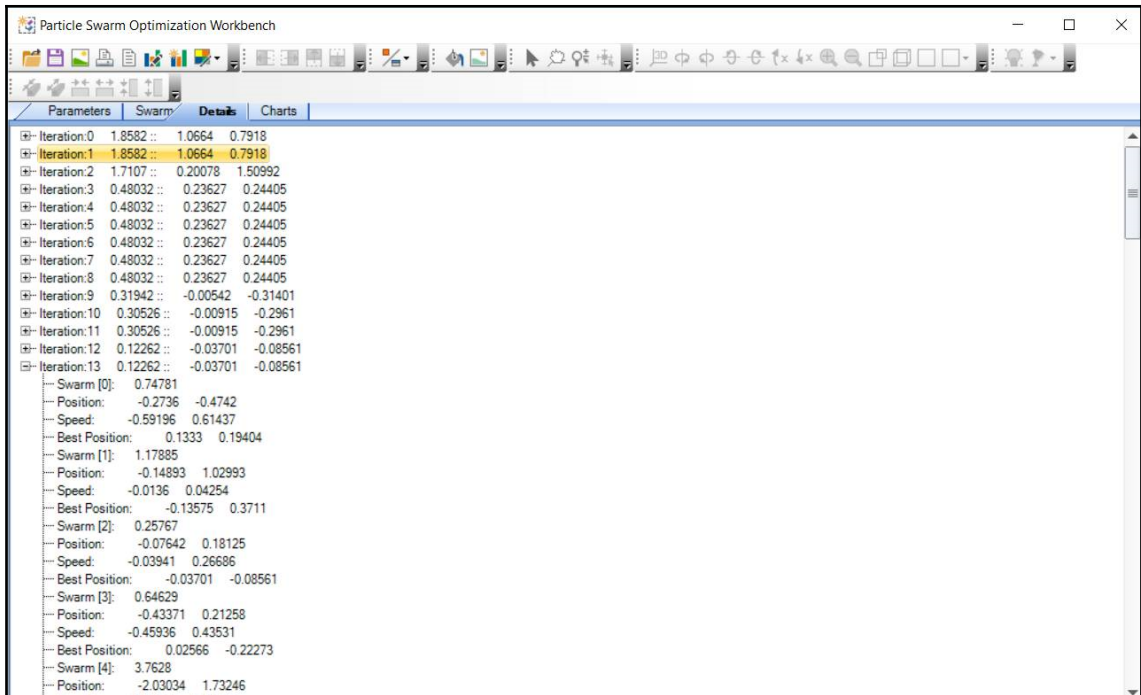


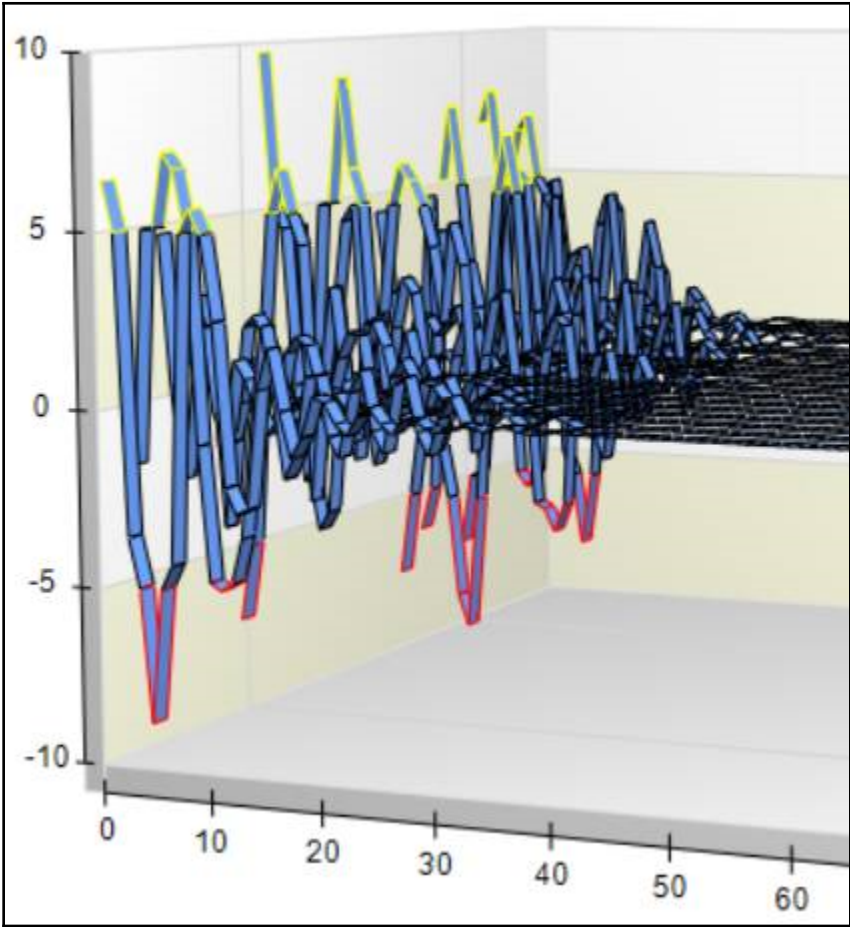
Chapter 8: Function Optimizations; How and Why

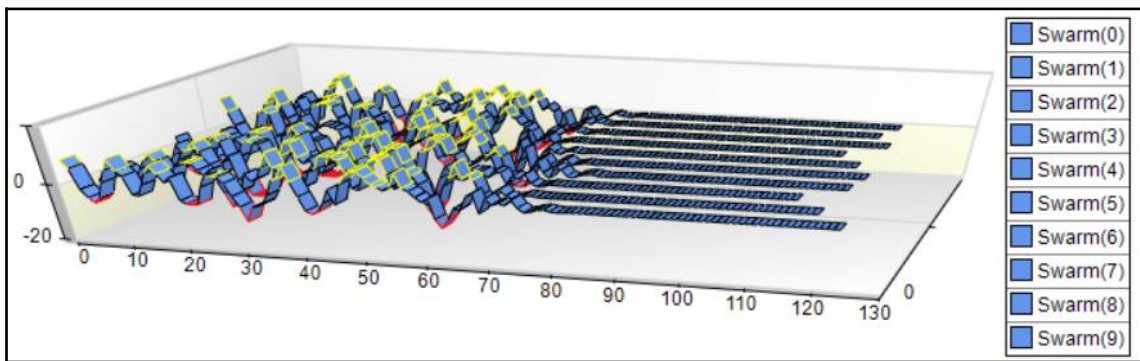
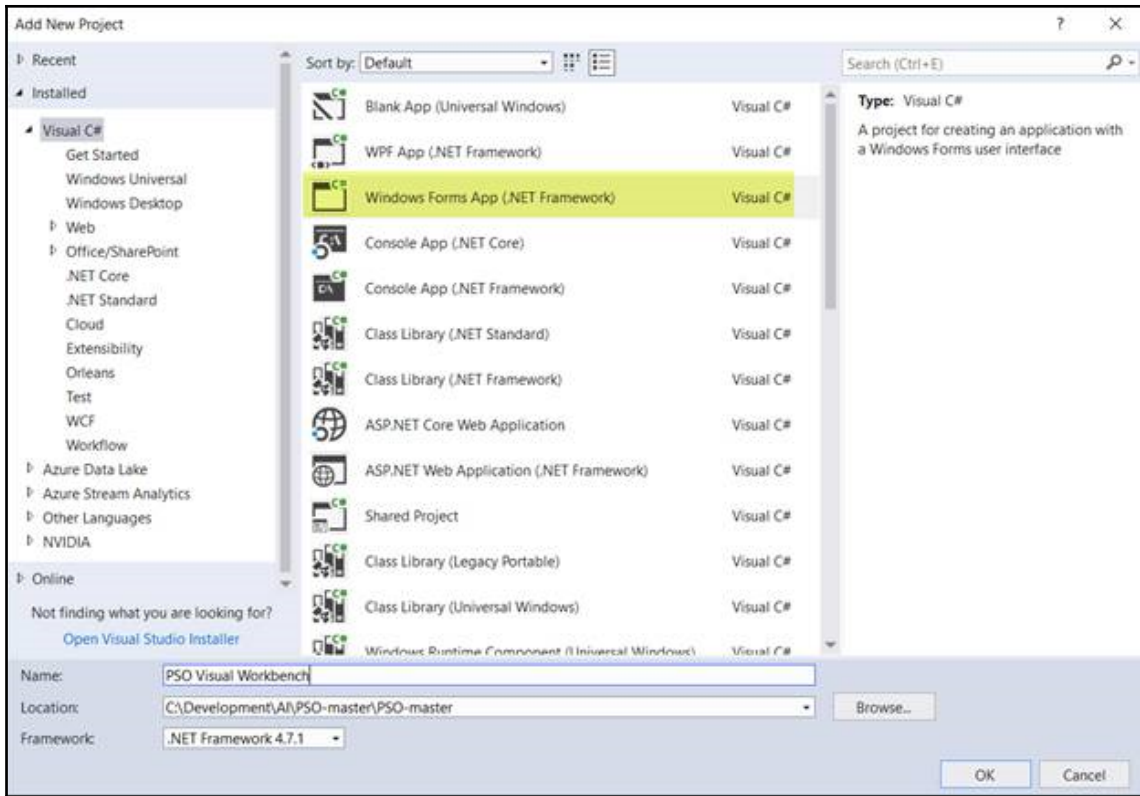


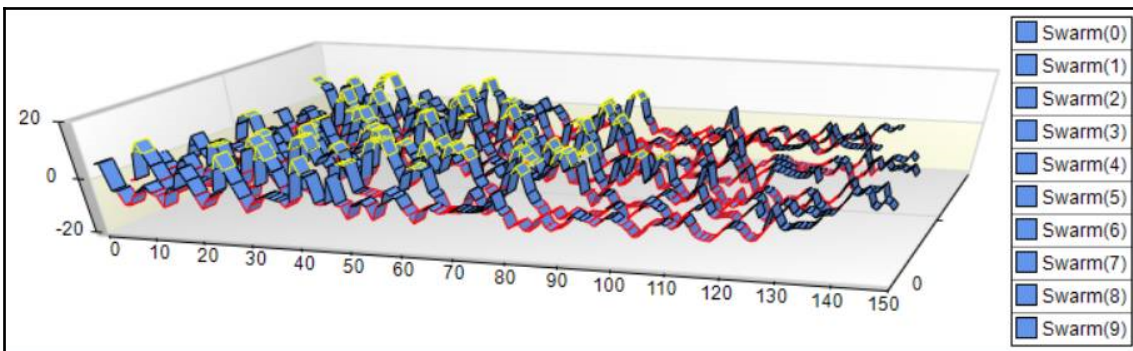
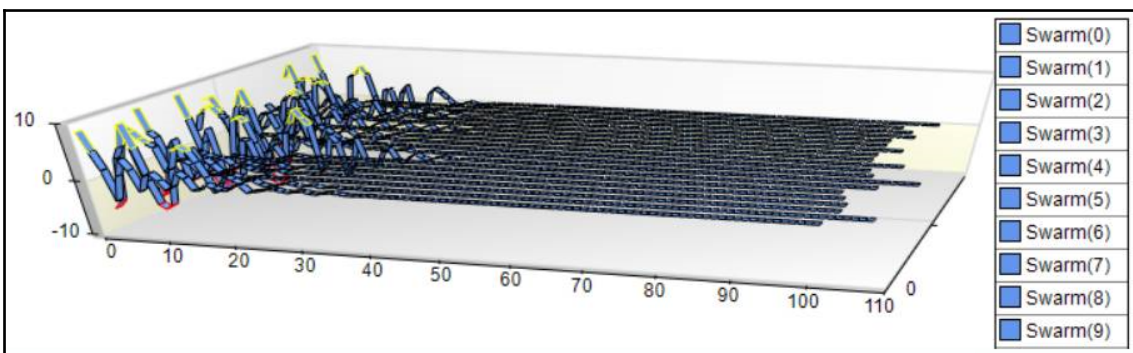
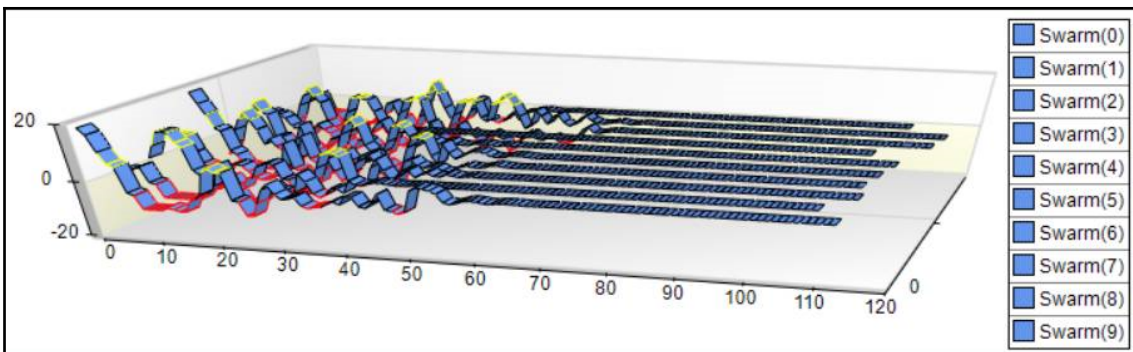


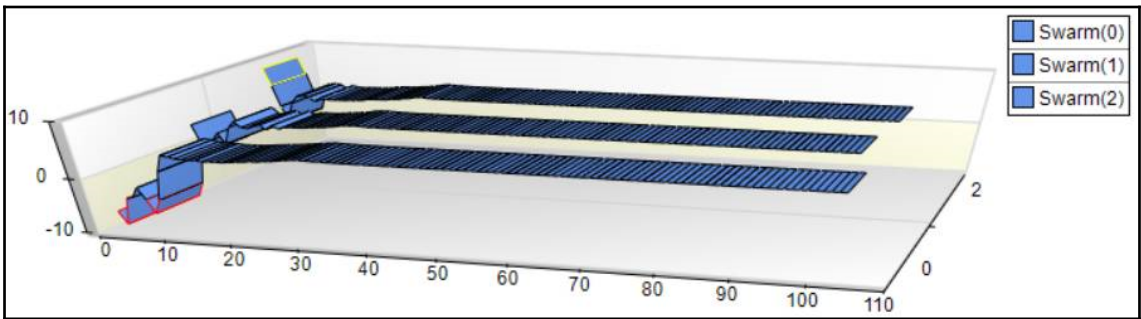
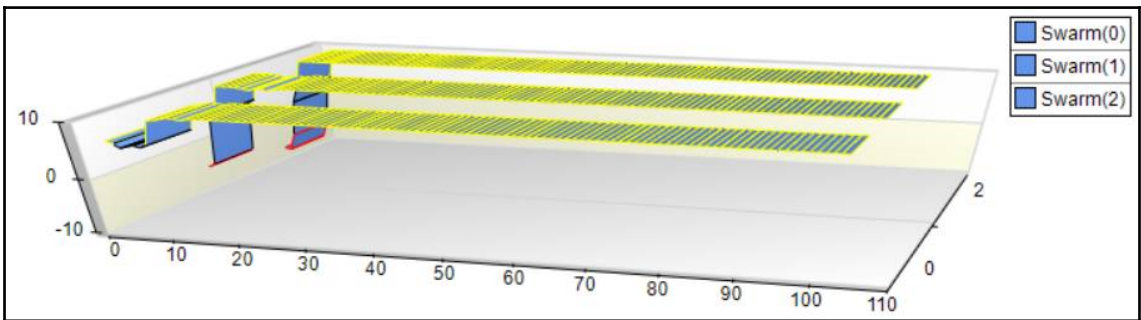
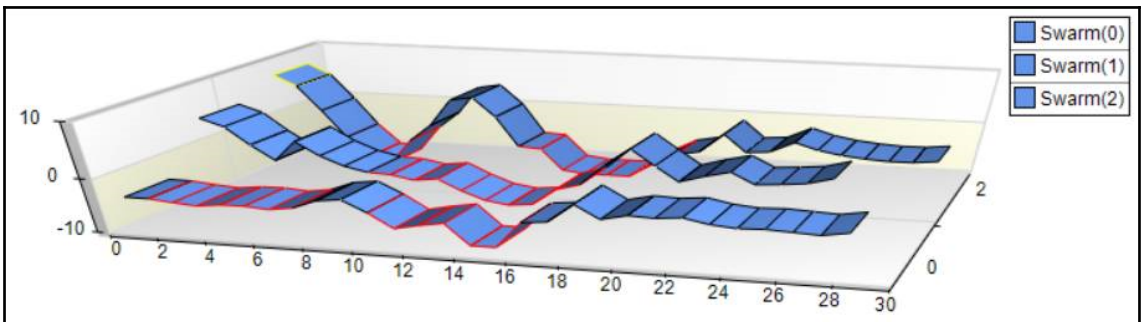
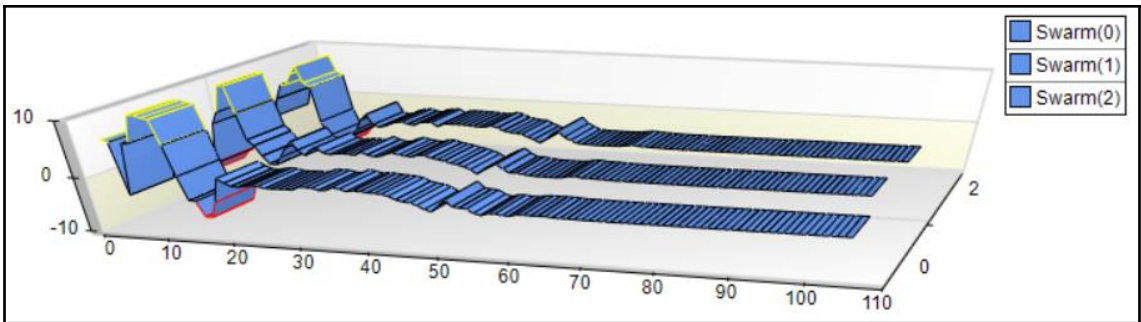


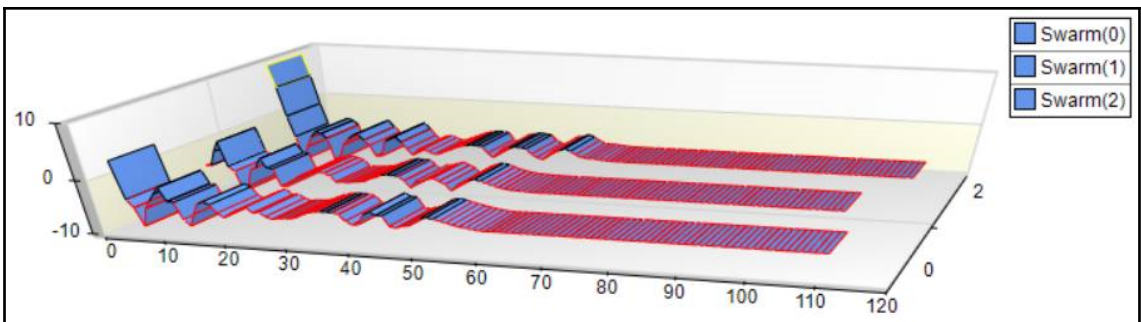
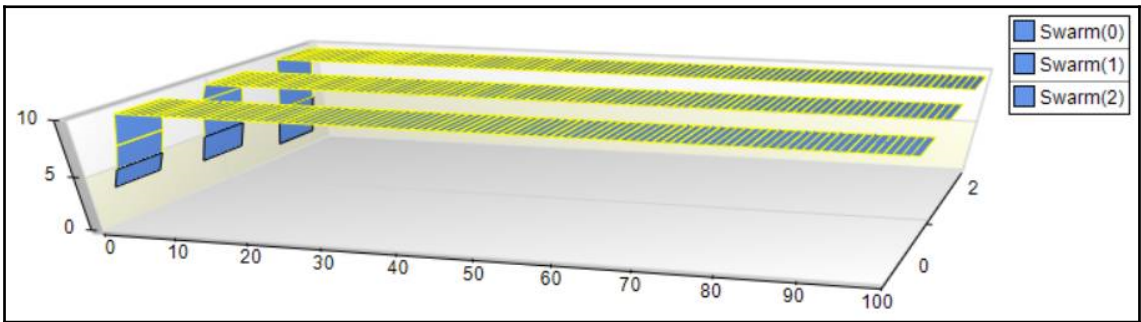
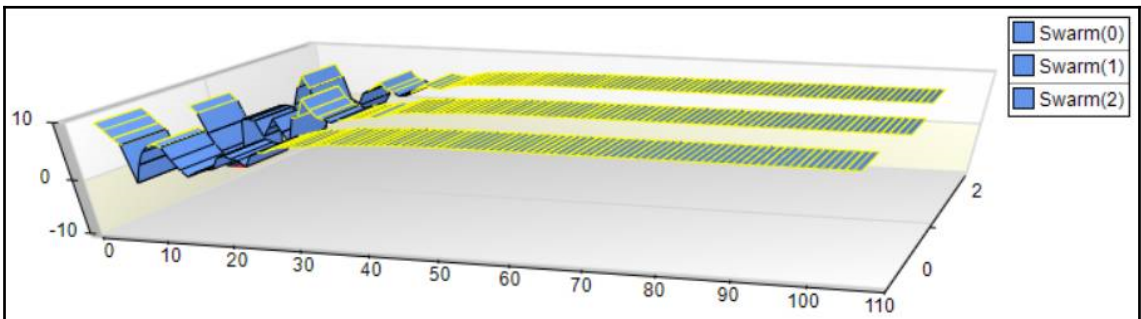
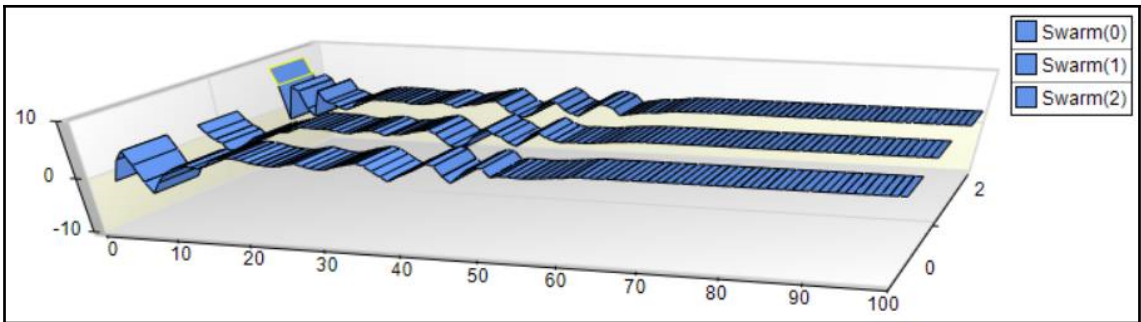


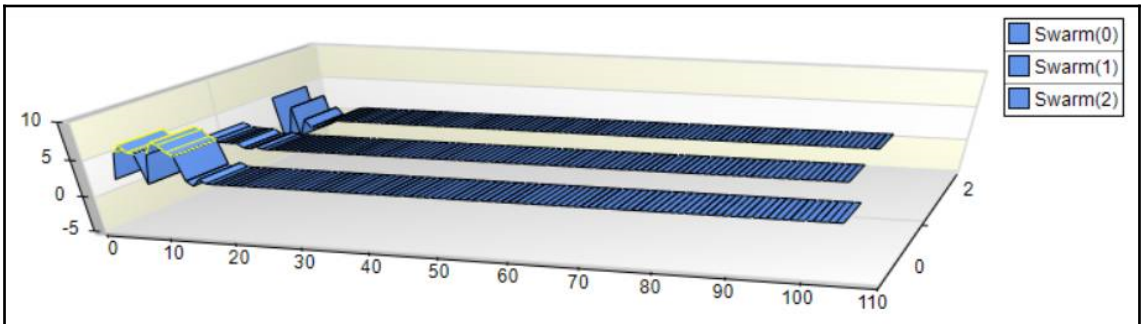
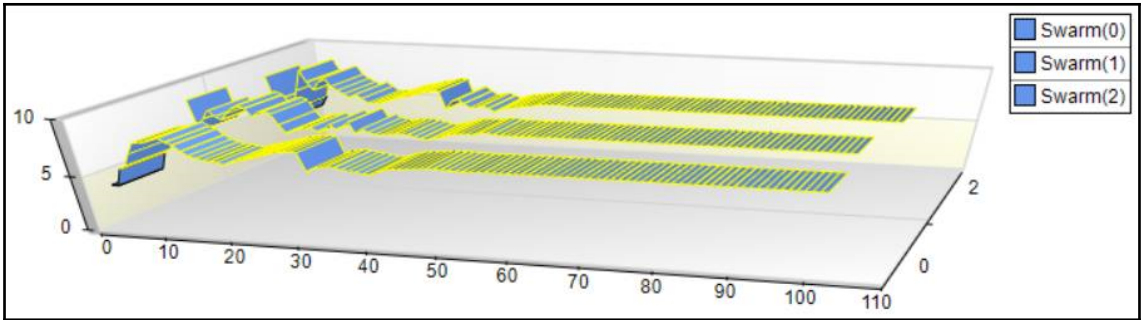


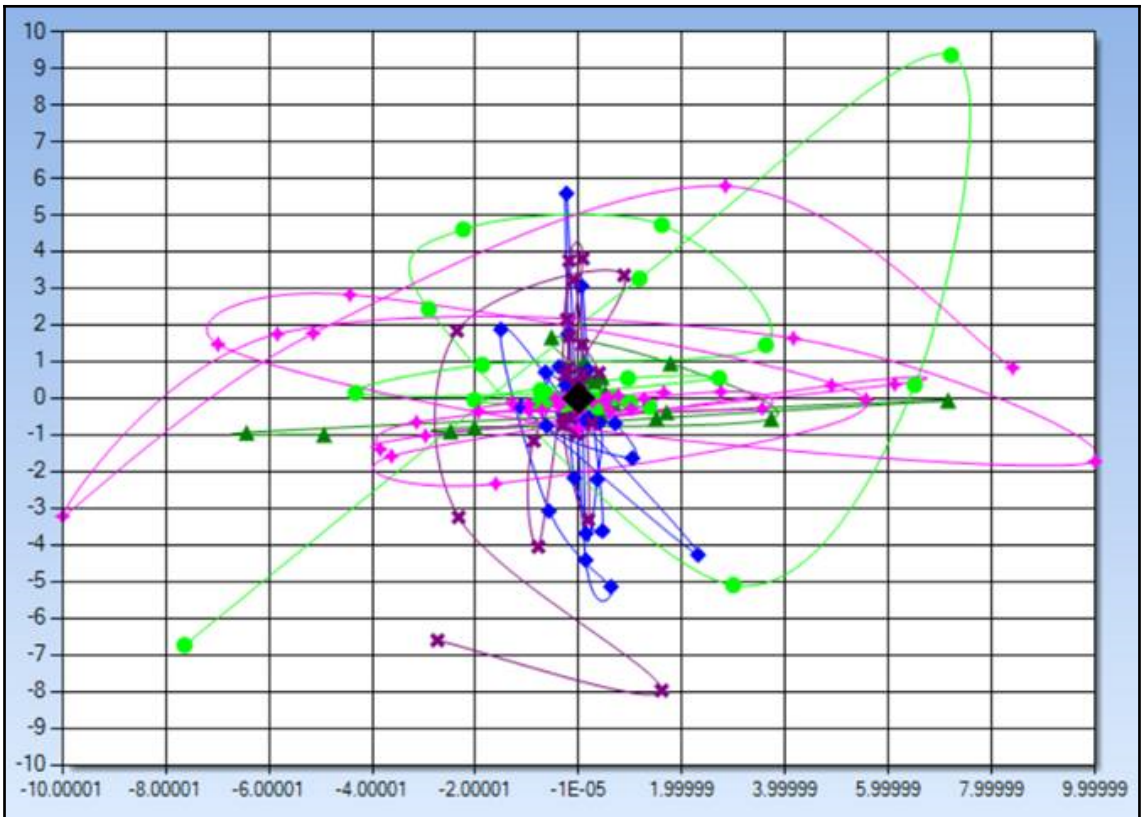


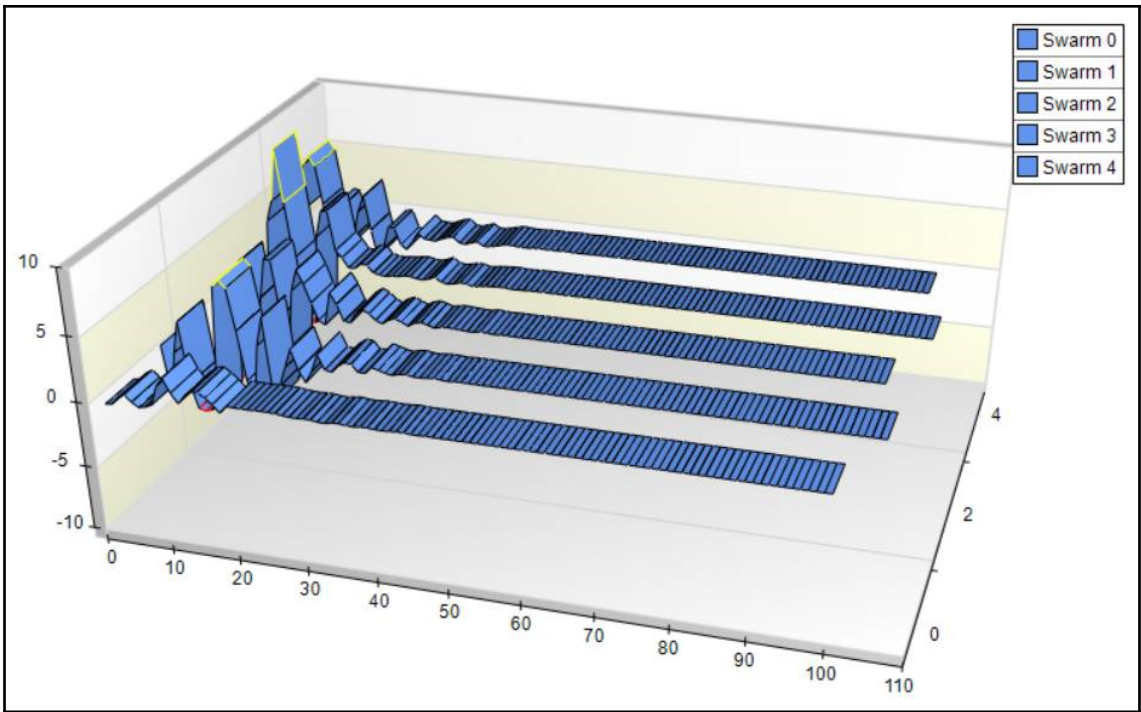


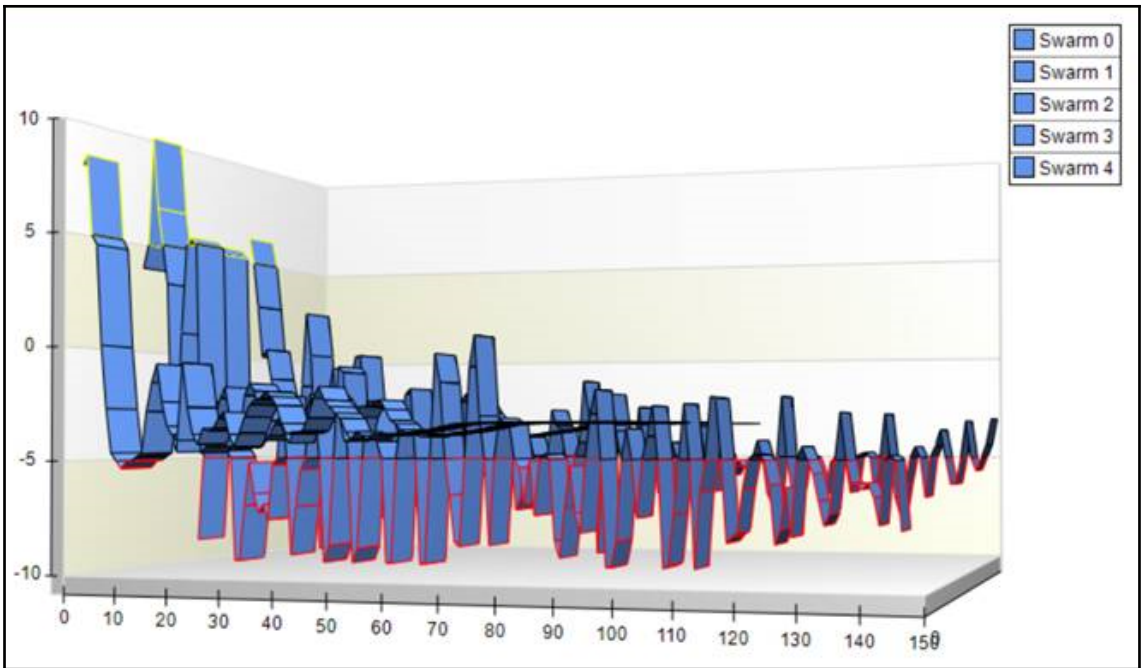


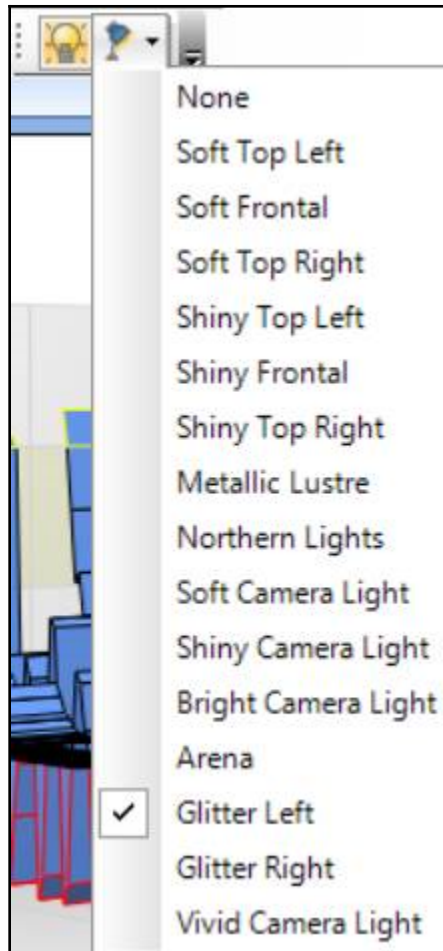


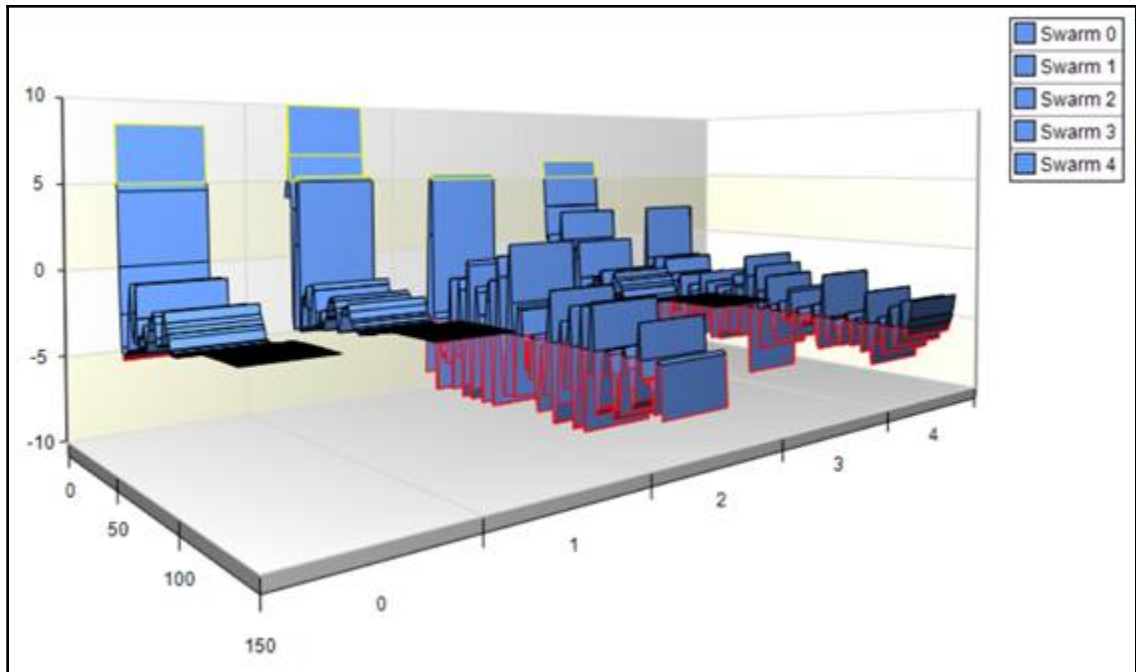


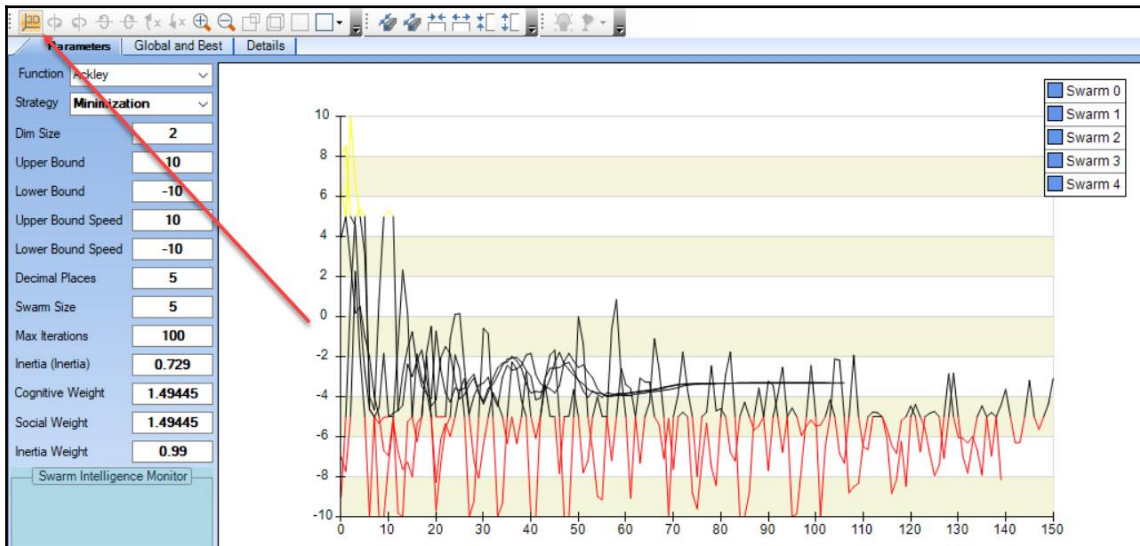
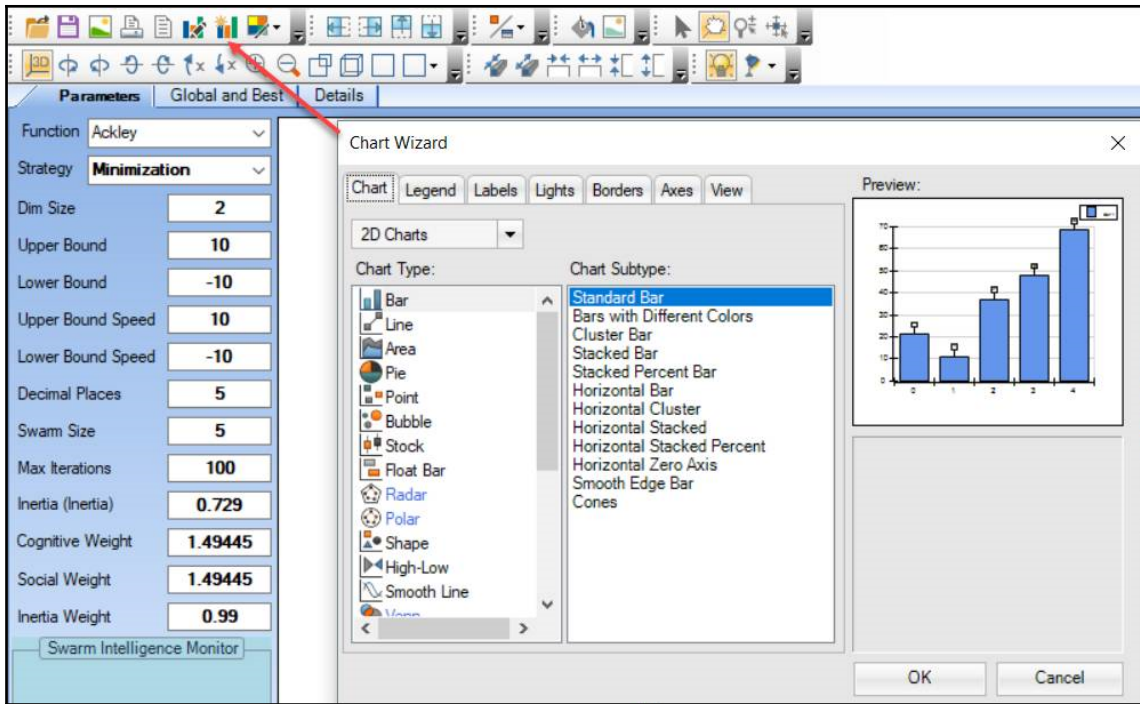


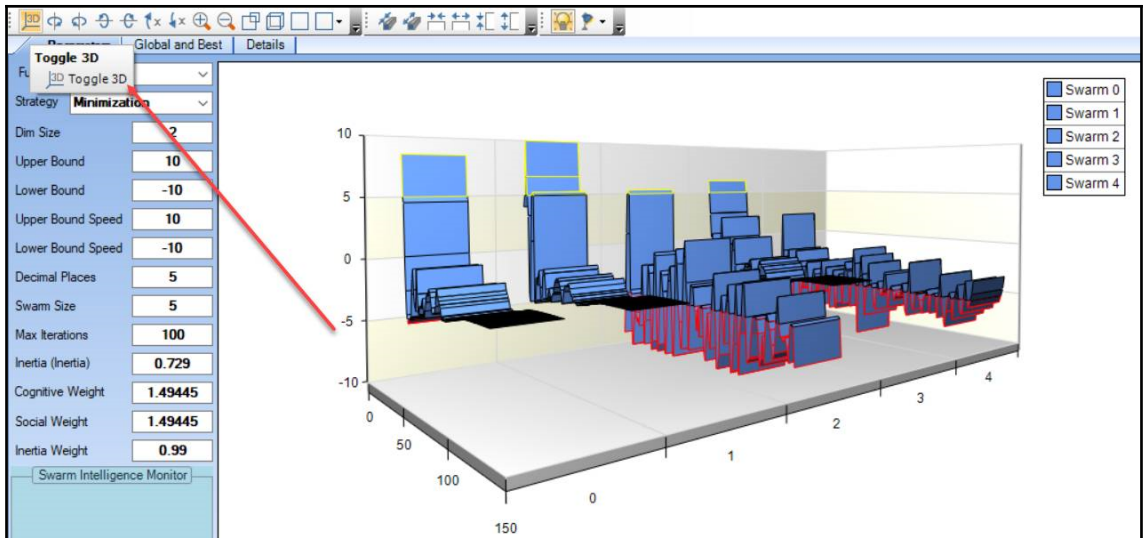


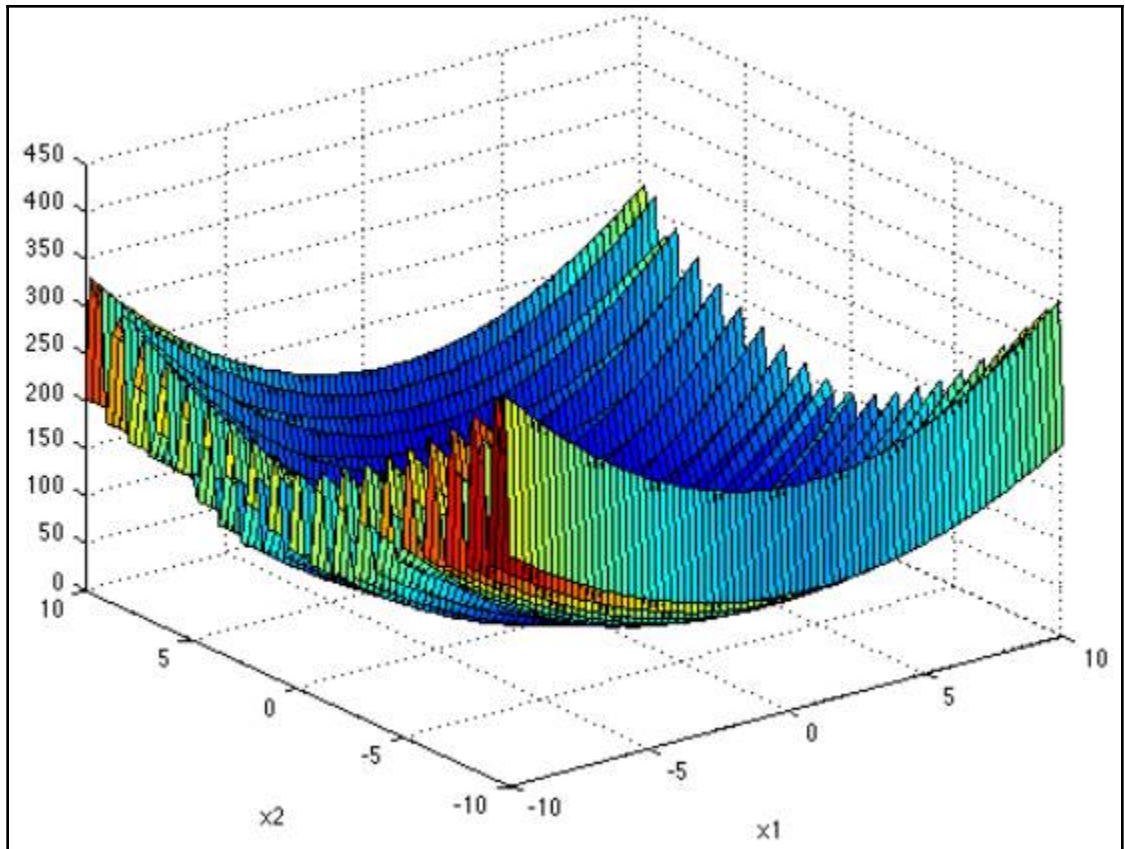


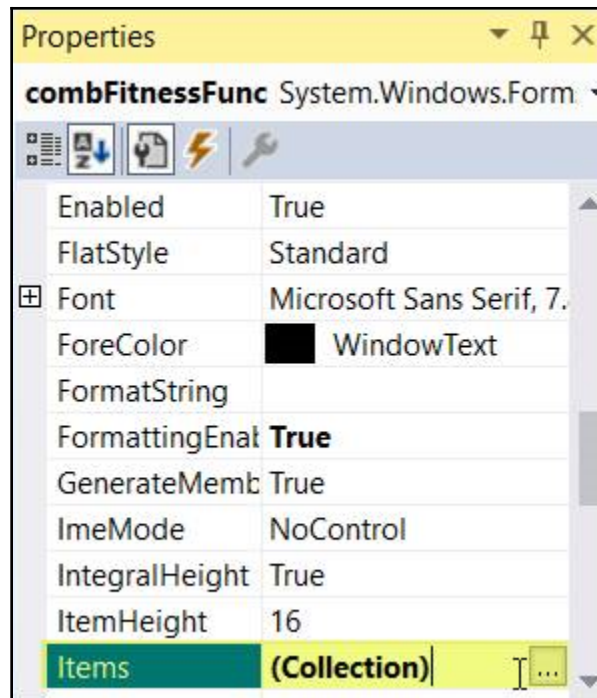


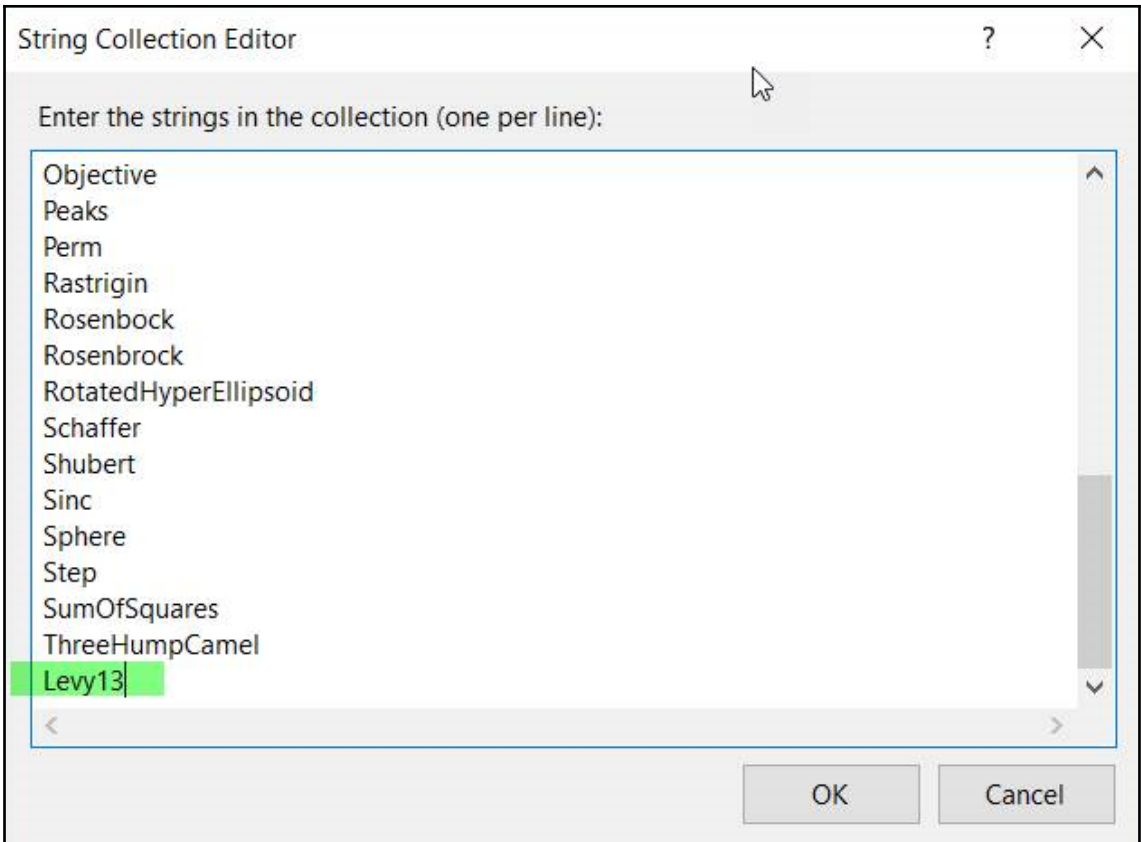


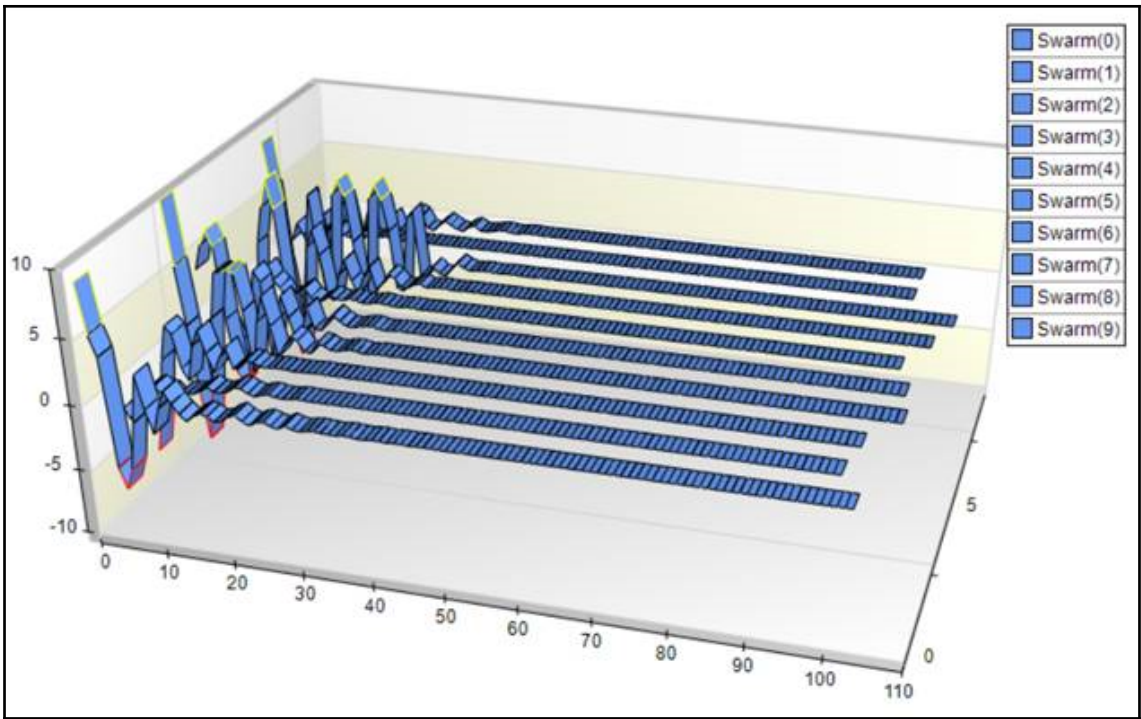






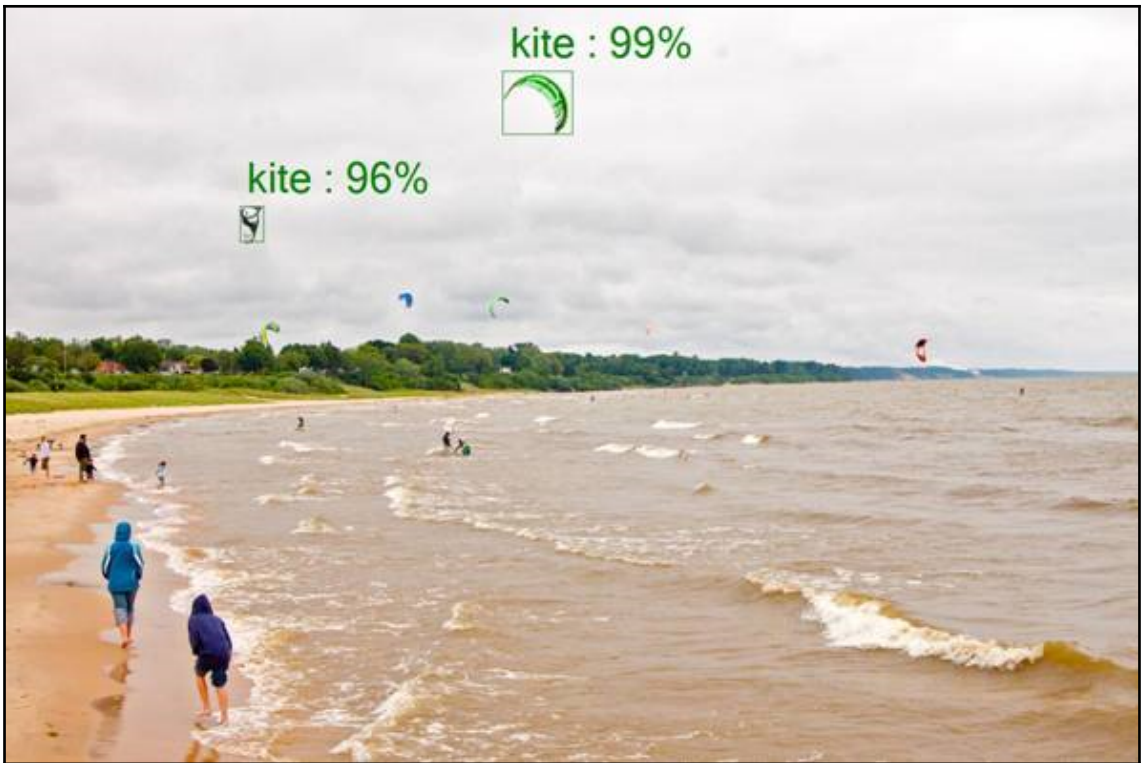


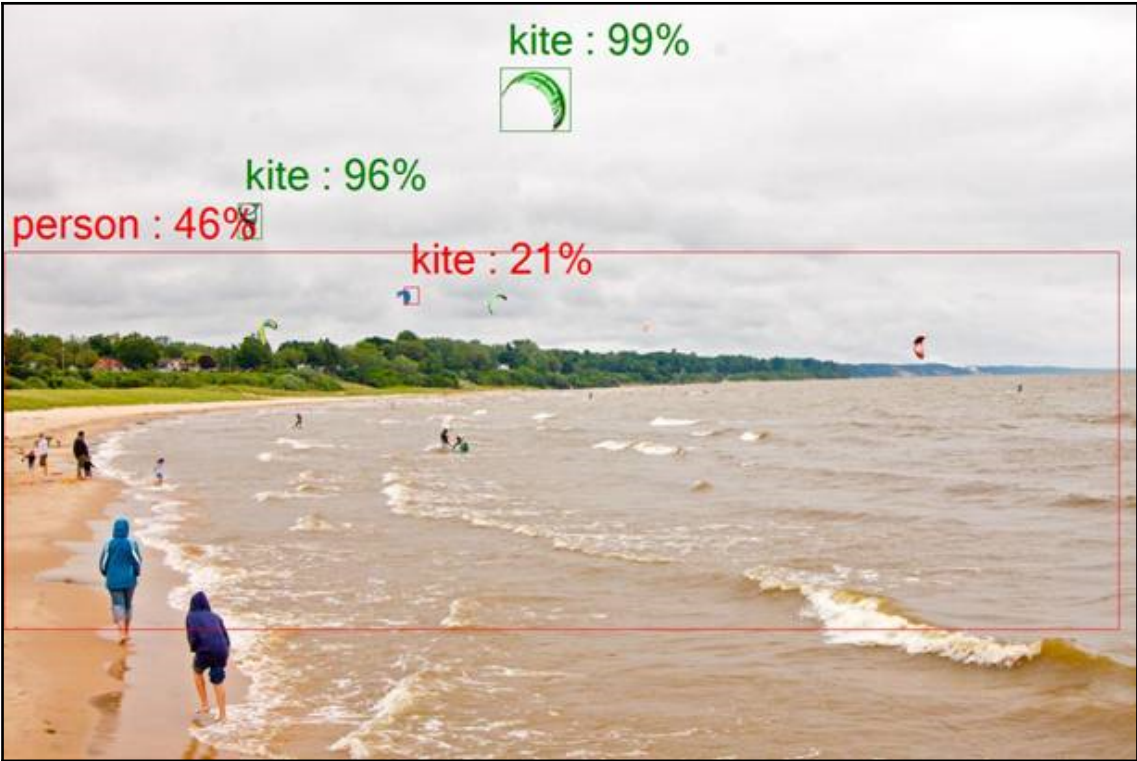


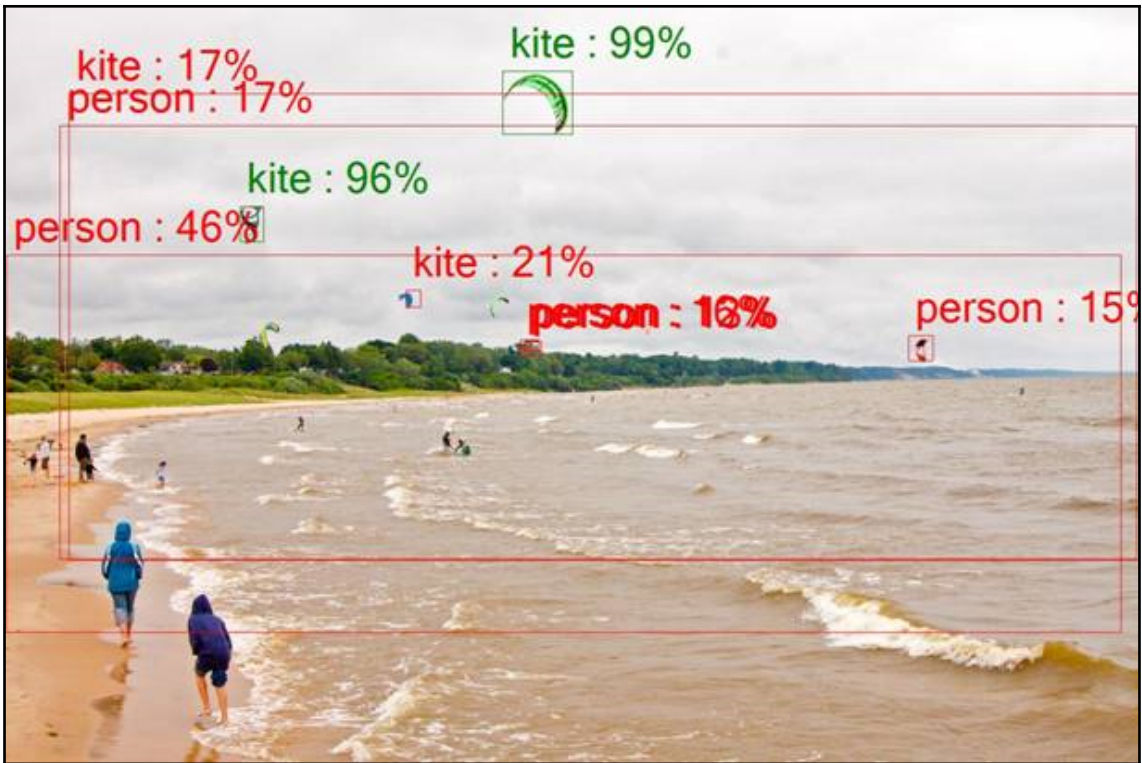


Chapter 10: Object Detection with TensorFlowSharp









Chapter 11: Time Series Prediction and LSTM Using CNTK

