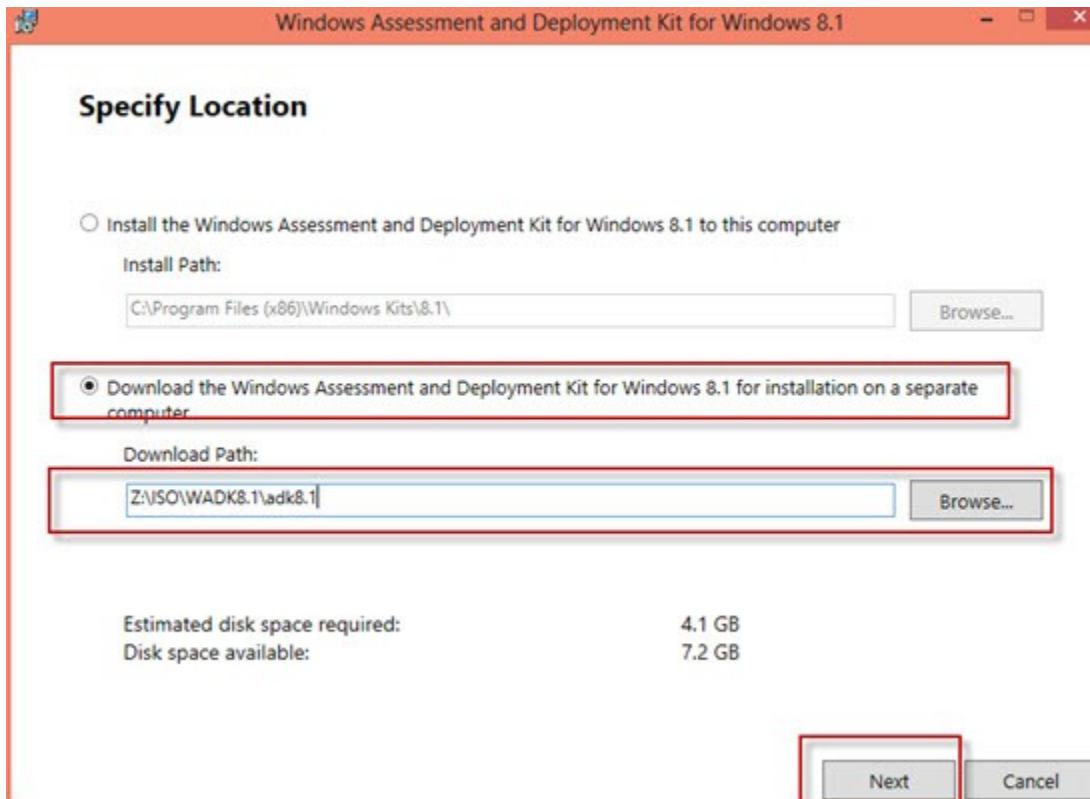
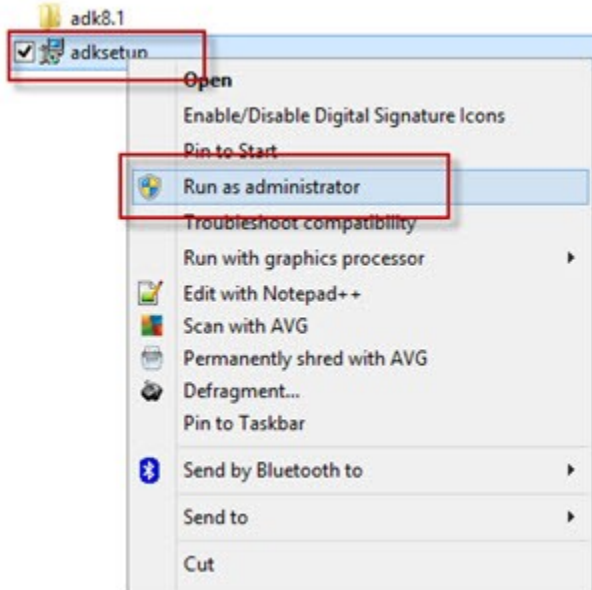
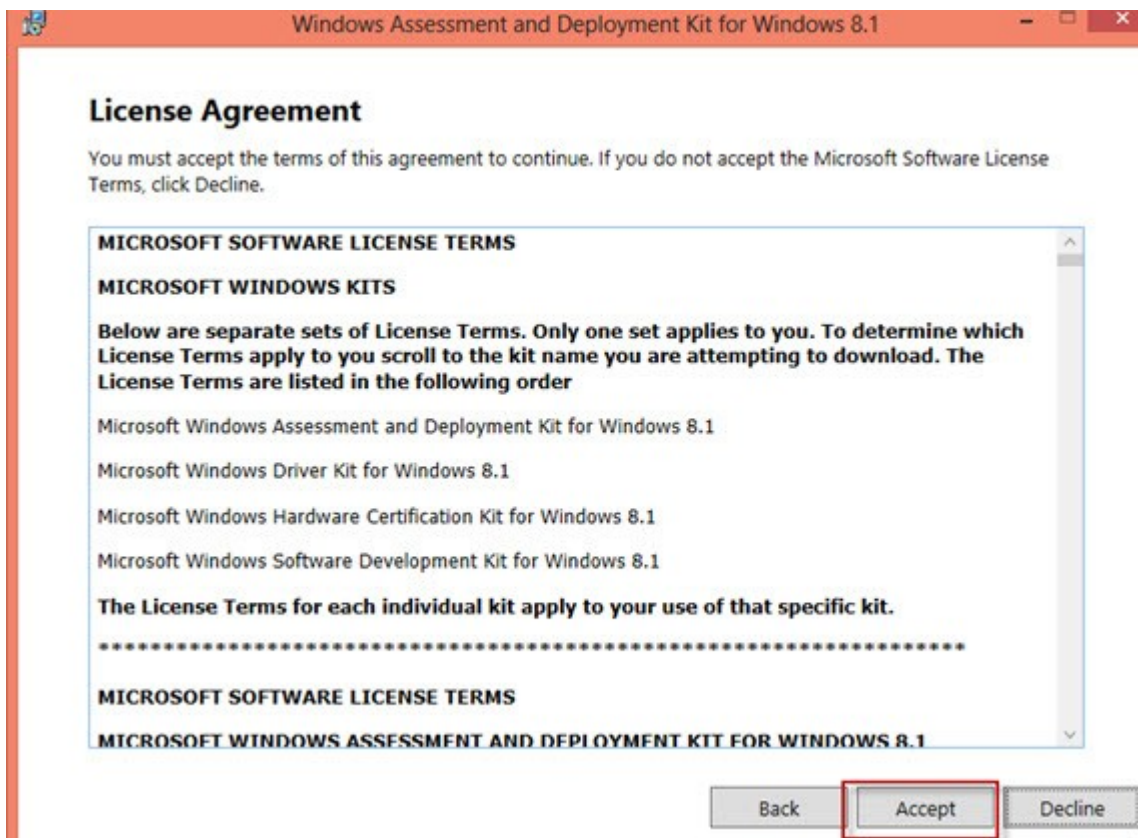
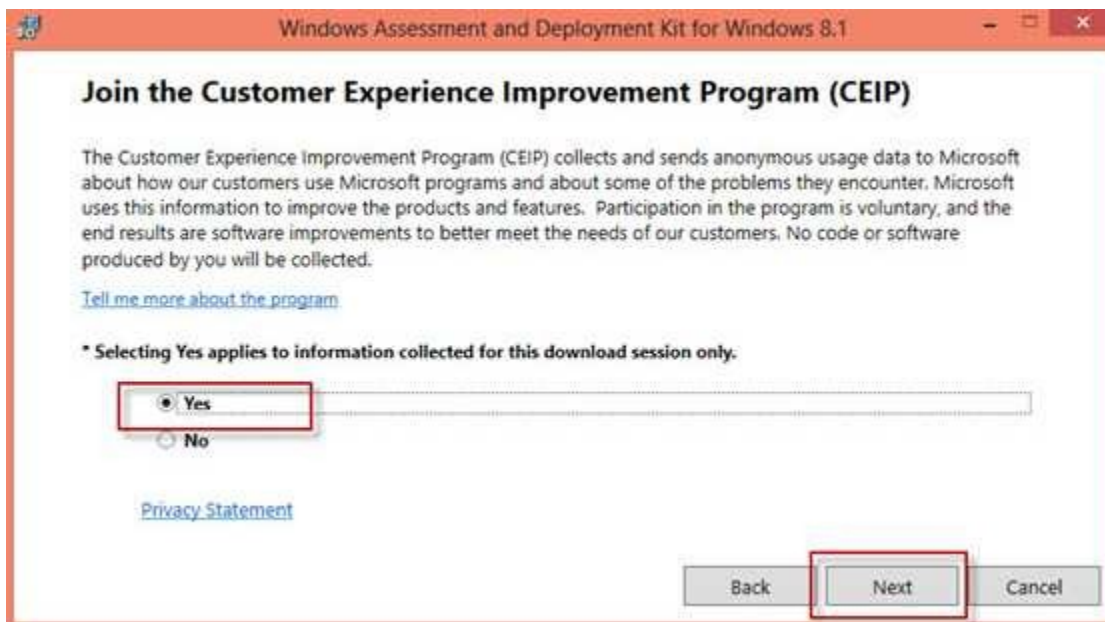
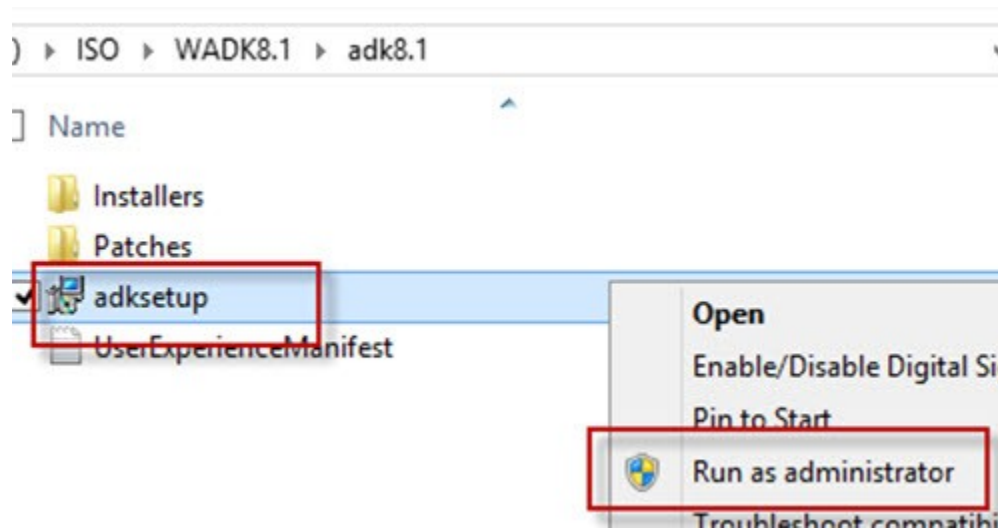
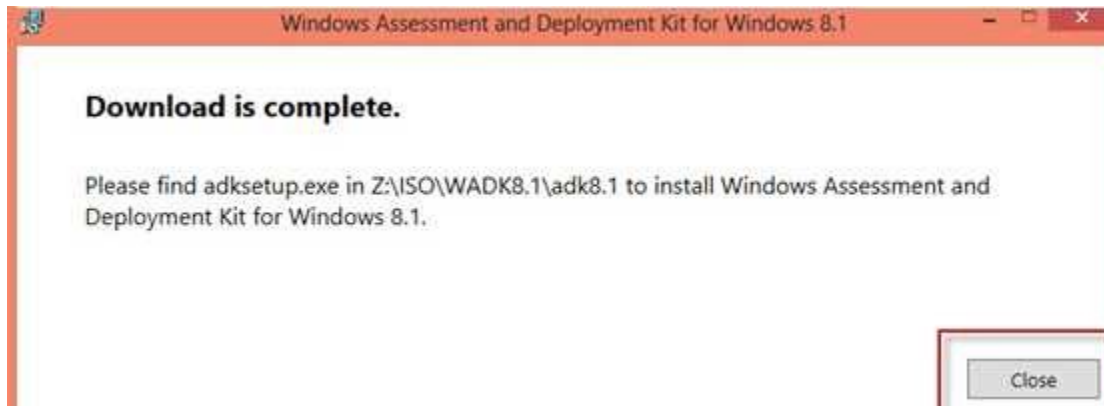
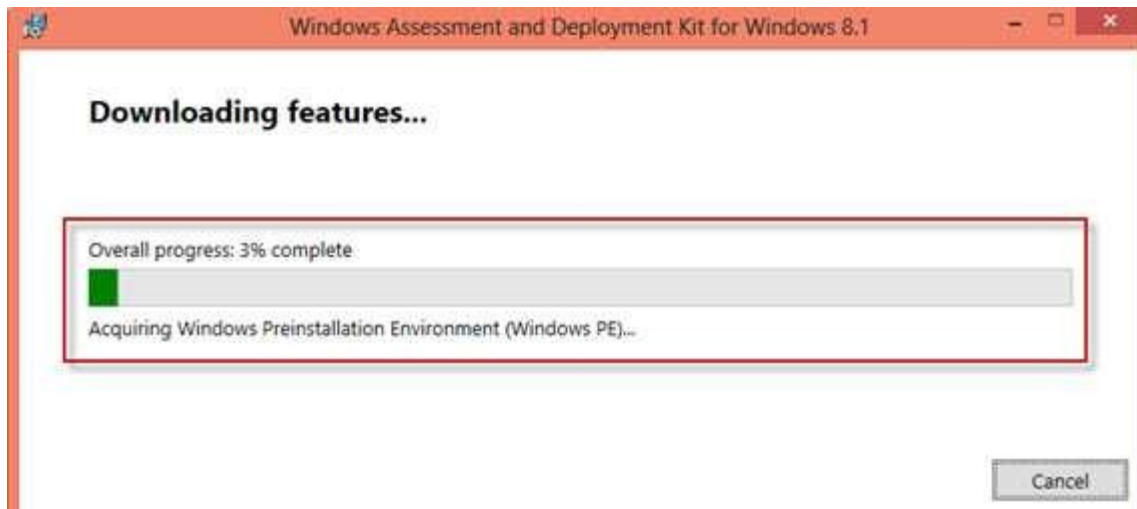
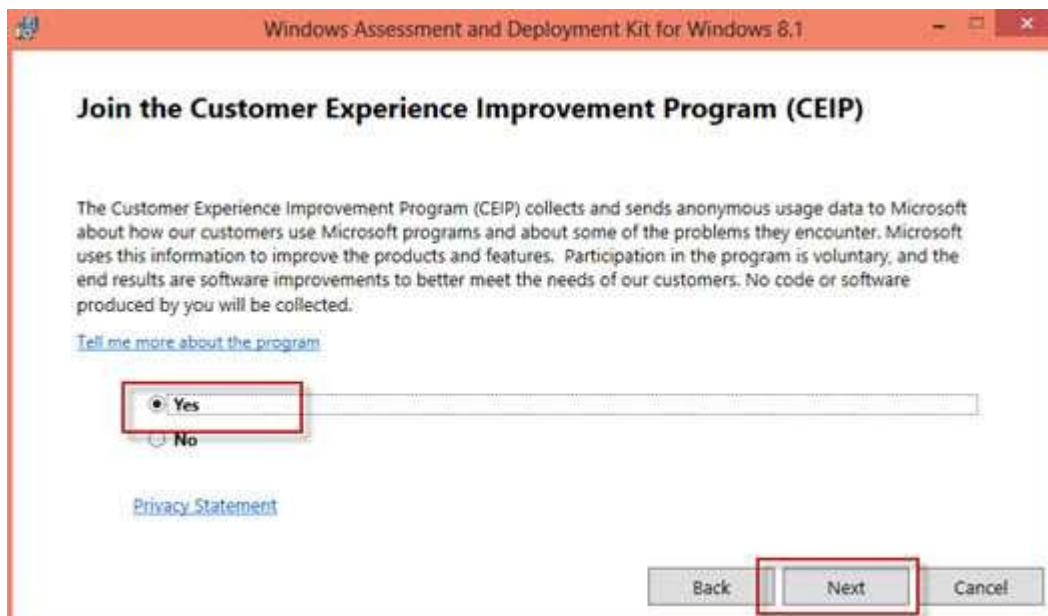
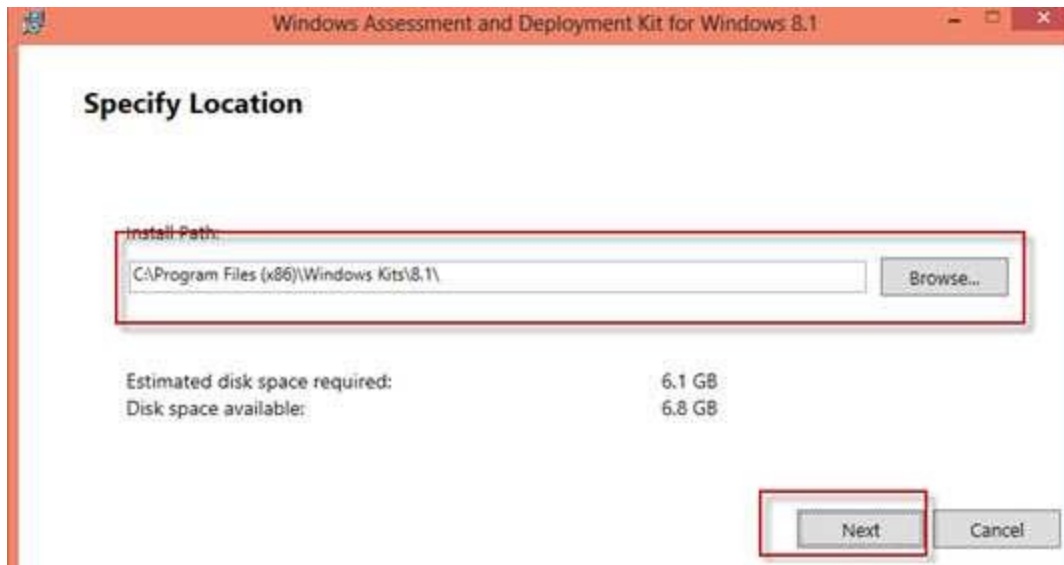


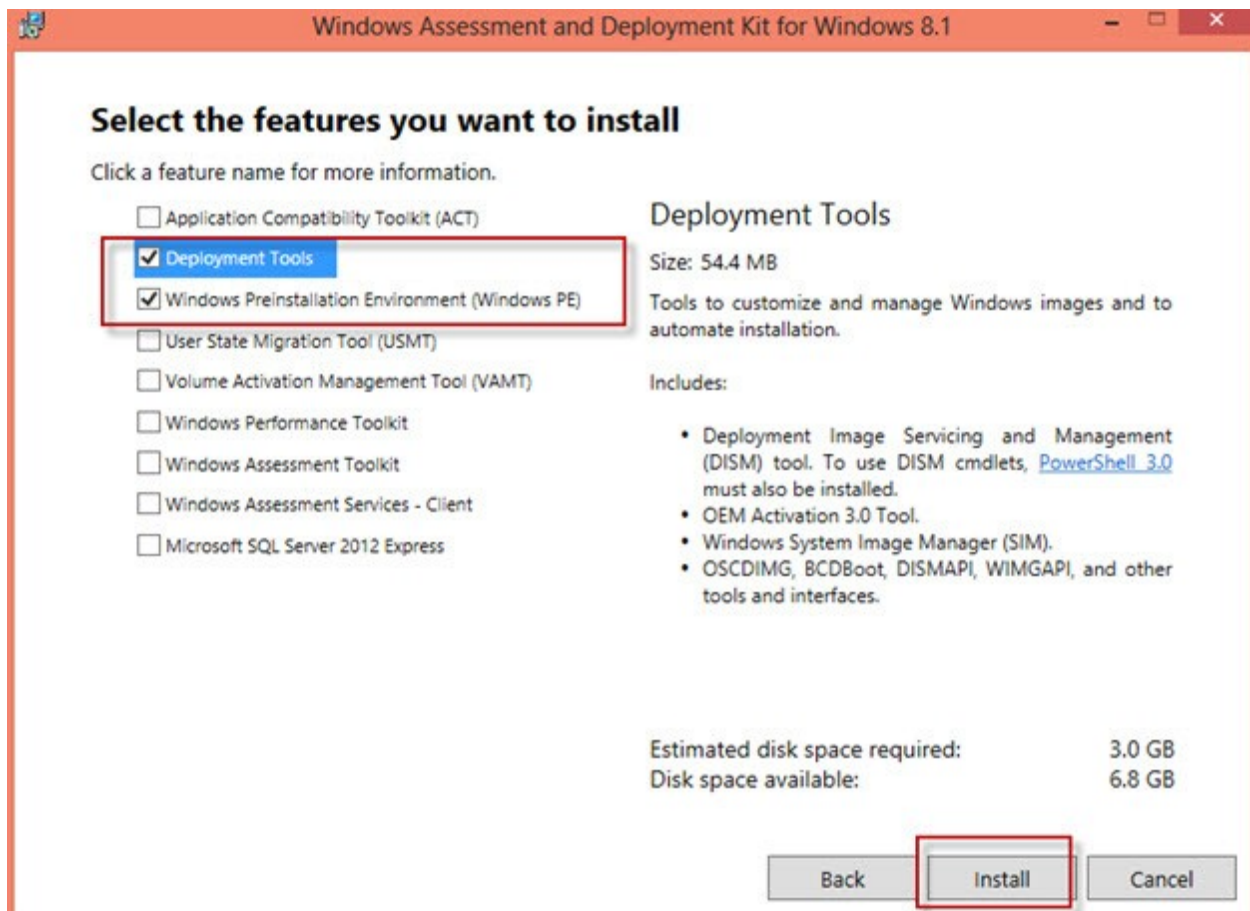
Chapter 1: Introduction to System Center 2012 R2 App Controller



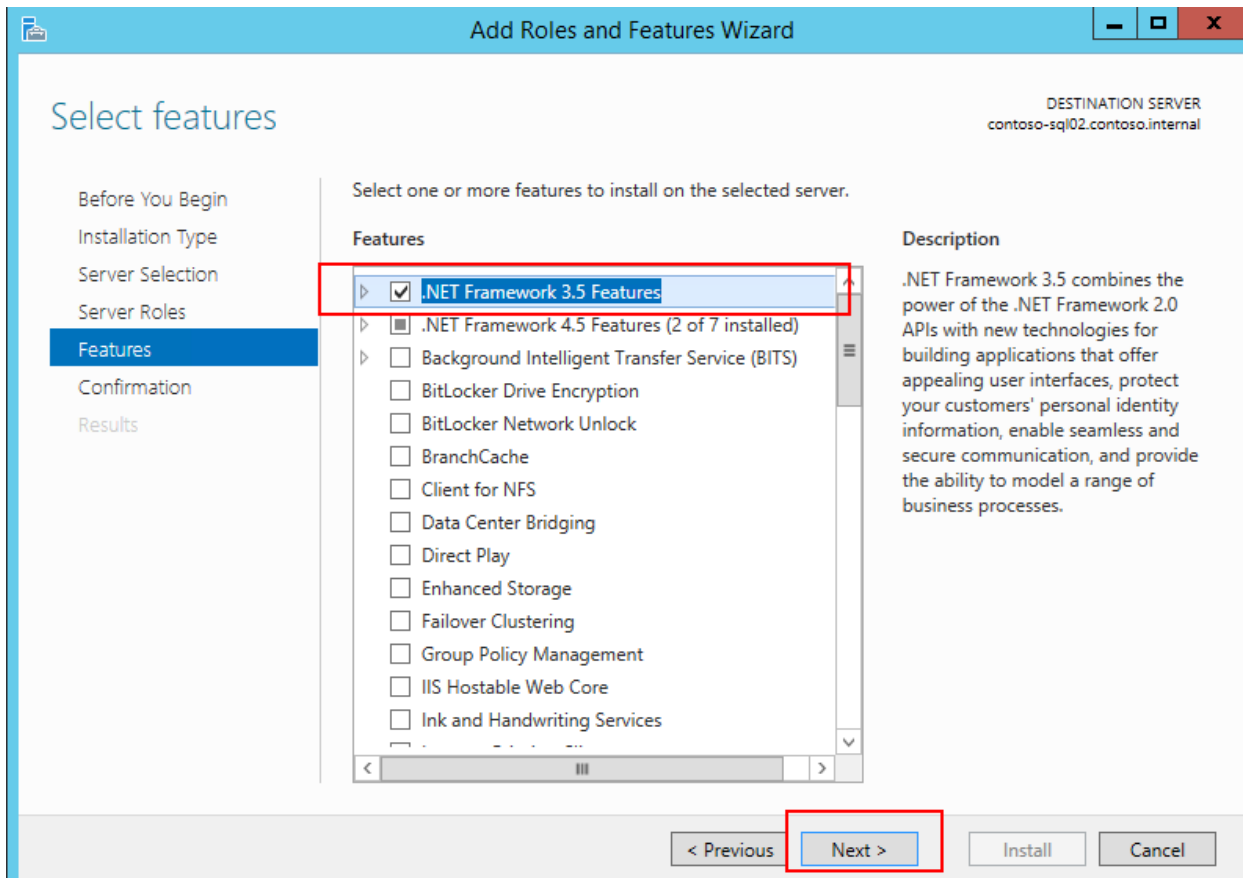








Chapter 2: Installing and Working with Different App Controller Components





Confirm installation selections

DESTINATION SERVER
contoso-sql02.contoso.internal

Do you need to specify an alternate source path? One or more installation selections are missing source files on the destinati...

Before You Begin

Installation Type

Server Selection

Server Roles

Features

Confirmation

Results

To install the following roles, role services, or features on selected server, click Install.

Restart the destination server automatically if required

Optional features (such as administration tools) might be displayed on this page because they have been selected automatically. If you do not want to install these optional features, click Previous to clear their check boxes.

.NET Framework 3.5 Features

.NET Framework 3.5 (includes .NET 2.0 and 3.0)

[Export configuration settings](#)

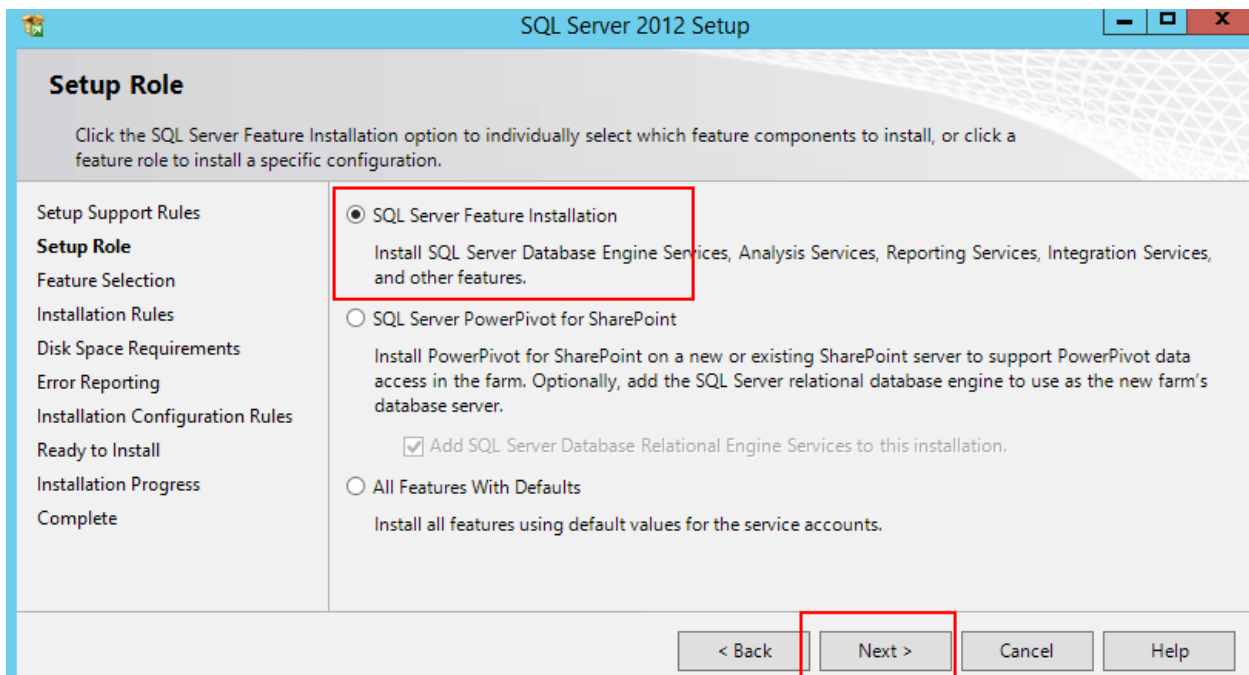
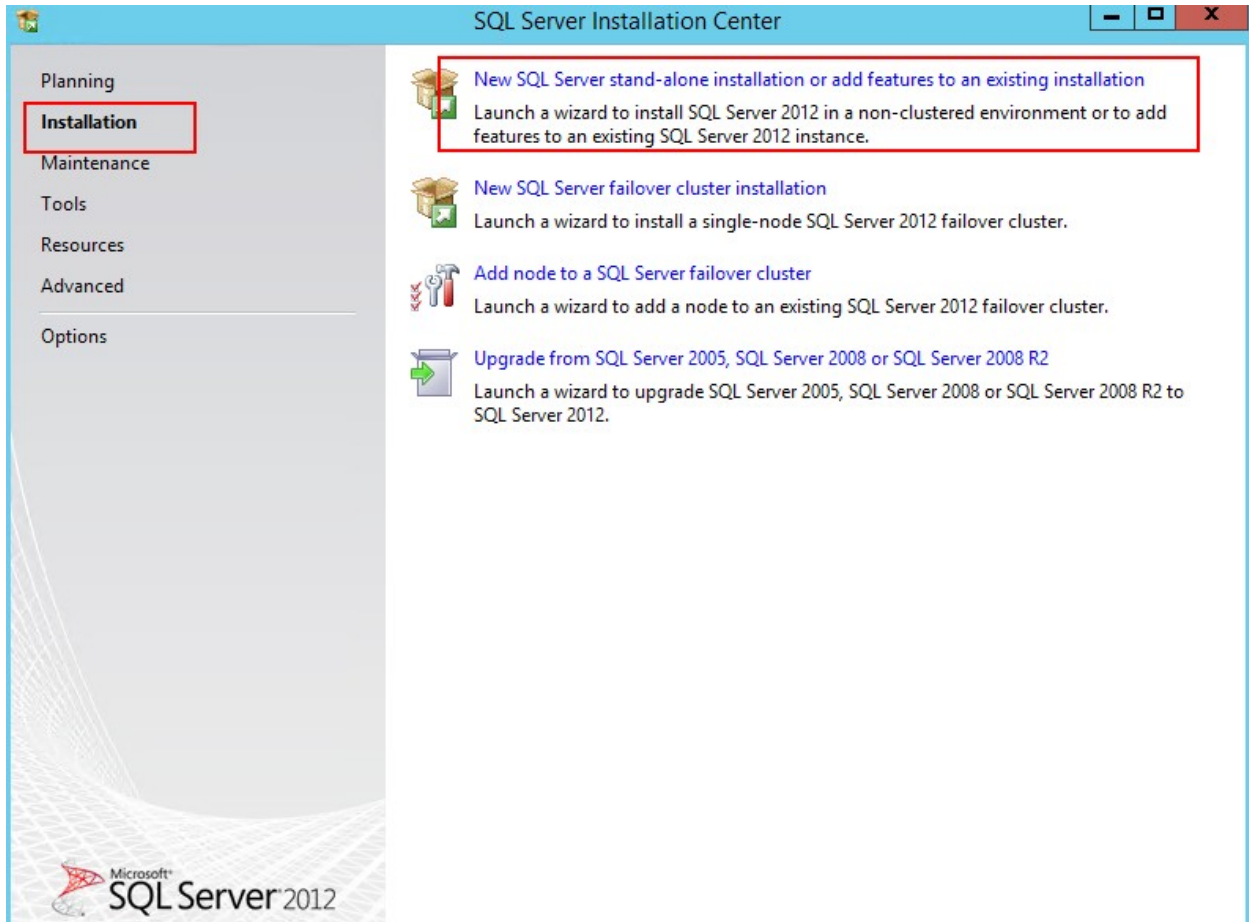
[Specify an alternate source path](#)

< Previous

Next >

Install

Cancel



SQL Server 2012 Setup

Feature Selection

Select the Evaluation features to install.

- Setup Support Rules
- Setup Role
- Feature Selection**
- Installation Rules
- Instance Configuration
- Disk Space Requirements
- Server Configuration
- Database Engine Configuration
- Error Reporting
- Installation Configuration Rules
- Ready to Install
- Installation Progress
- Complete

Features:

Instance Features:

- Database Engine Services
- SQL Server Replication
- Full-Text and Semantic Extractions for Search
- Data Quality Services
- Analysis Services
- Reporting Services - Native

Shared Features:

- Reporting Services - SharePoint
- Reporting Services Add-in for SharePoint Products
- Data Quality Client
- SQL Server Data Tools
- Client Tools Connectivity
- Integration Services
- Client Tools Backwards Compatibility

Feature description:

Includes the Database Engine, the core service for storing, processing and securing data. The Database Engine provides controlled access and rapid transaction processing and also provides rich support for sustaining high availability. The Database Engine also provides support for the utility control point in the SQL Server Utility. Only

Prerequisites for selected features:

Already installed:

- Microsoft .NET Framework 4.0
- Windows PowerShell 2.0
- Microsoft .NET Framework 3.5

To be installed from media:

- Microsoft Visual Studio 2010 Shell

Select All Unselect All

Shared feature directory: D:\Program Files\Microsoft SQL Server\

Shared feature directory (x86): D:\Program Files (x86)\Microsoft SQL Server\

< Back Next > Cancel Help

Feature Selection

Select the Evaluation features to install.

- Setup Support Rules
- Setup Role
- Feature Selection**
- Installation Rules
- Instance Configuration
- Disk Space Requirements
- Server Configuration
- Database Engine Configuration
- Error Reporting
- Installation Configuration Rules
- Ready to Install
- Installation Progress
- Complete

Features:

- Data Quality Client
 - SQL Server Data Tools
 - Client Tools Connectivity
 - Integration Services
 - Client Tools Backwards Compatibility
 - Client Tools SDK
 - Documentation Components
 - Management Tools - Basic
 - Management Tools - Complete
 - Distributed Replay Controller
 - Distributed Replay Client
 - SQL Client Connectivity SDK
 - Master Data Services
- Redistributable Features

Feature description:

Includes the Database Engine, the core service for storing, processing and securing data. The Database Engine provides controlled access and rapid transaction processing and also provides rich support for sustaining high availability. The Database Engine also provides support for the utility control point in the SQL Server Utility. Only

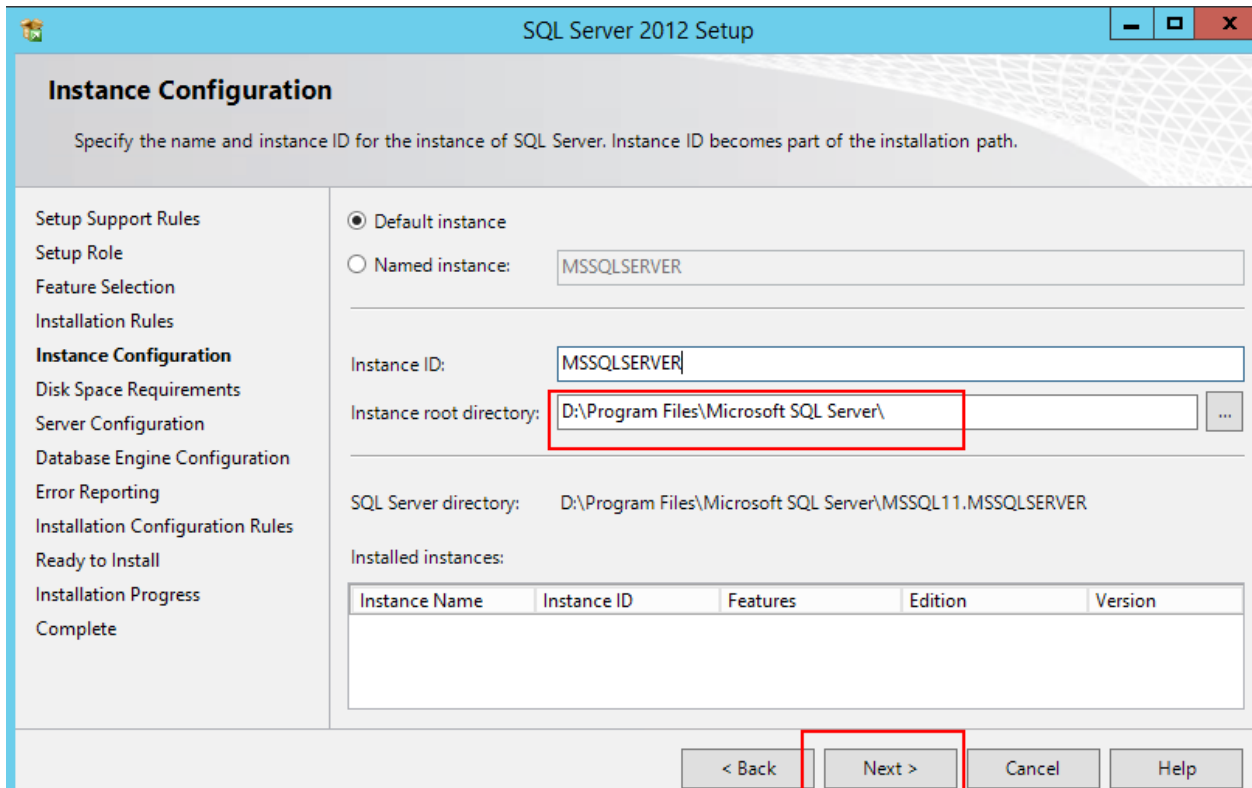
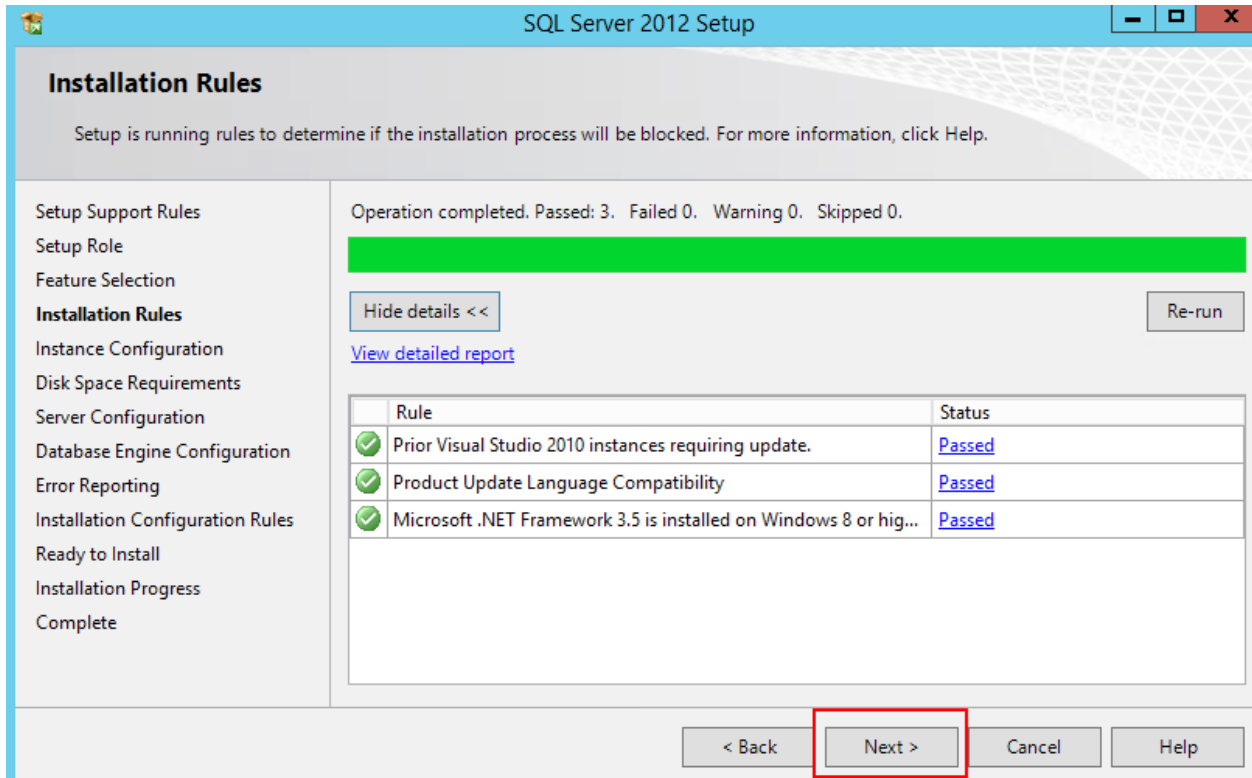
Prerequisites for selected features:

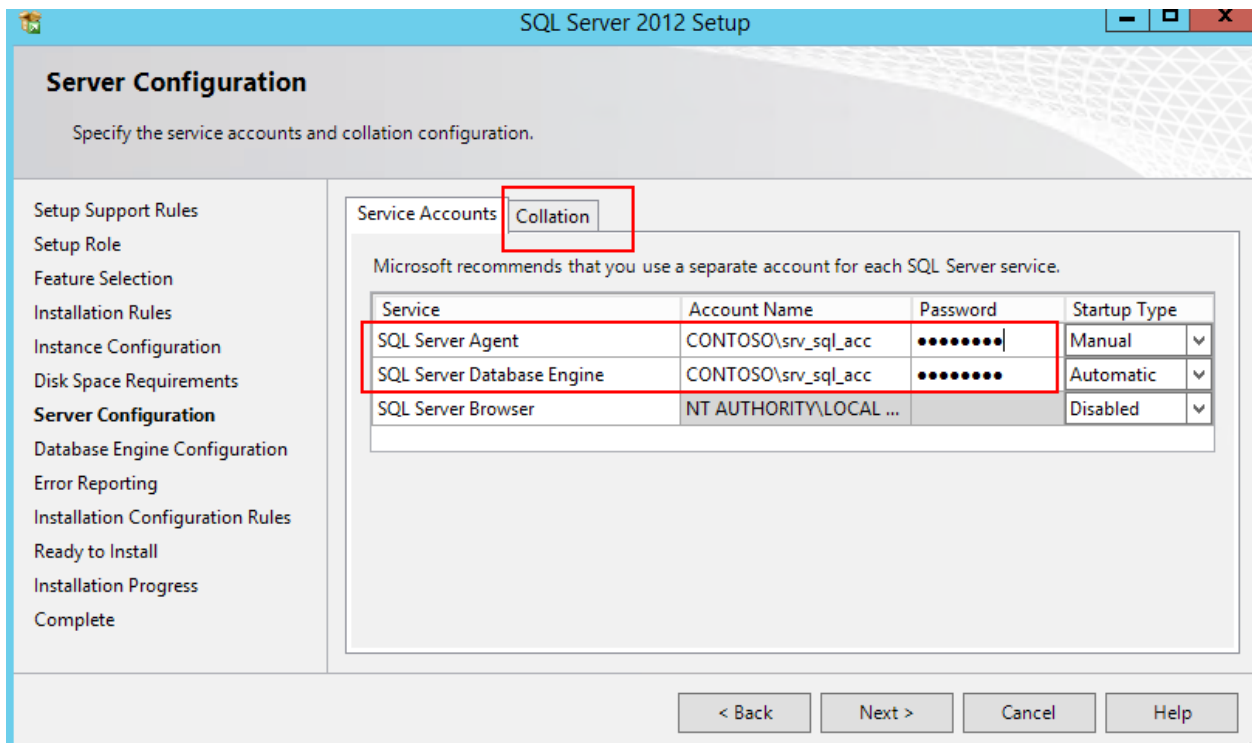
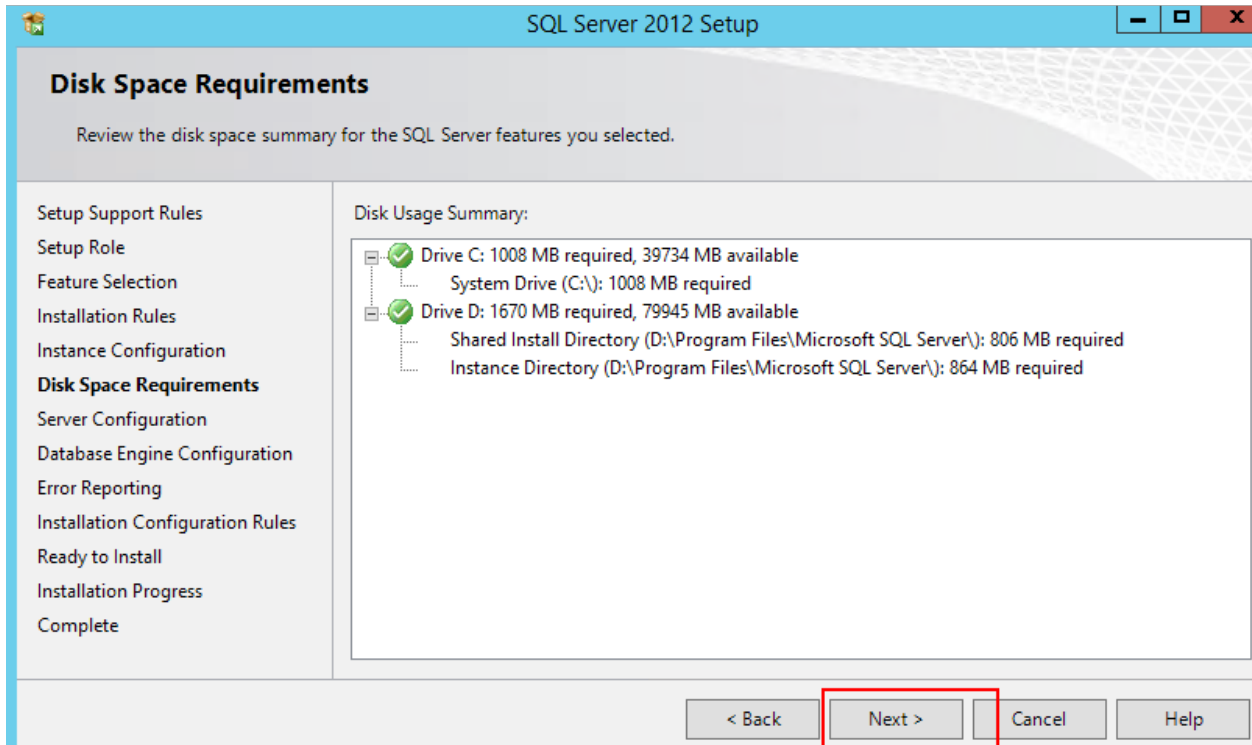
- Already installed:
- ... Microsoft .NET Framework 4.0
 - ... Windows PowerShell 2.0
 - ... Microsoft .NET Framework 3.5
- To be installed from media:
- ... Microsoft Visual Studio 2010 Shell

Select All Unselect All

Shared feature directory: D:\Program Files\Microsoft SQL Server\

Shared feature directory (x86): D:\Program Files (x86)\Microsoft SQL Server\





Customize the SQL Server 2012 Database Engine Collation

Select the collation you would like to use:

Windows collation designator and sort order

Collation designator:

Binary Binary-code point
 Case-sensitive Kana-sensitive
 Accent-sensitive Width-sensitive
 Supplementary characters

SQL collation, used for backwards compatibility

- SQL_Latin1_General_CP1_CI_AS
- SQL_Latin1_General_CP1_CS_AS
- SQL_Latin1_General_CP1250_CI_AS
- SQL_Latin1_General_CP1250_CS_AS
- SQL_Latin1_General_CP1251_CI_AS

Collation description:

Latin1-General, case-insensitive, accent-sensitive, kanatype-insensitive, width-insensitive for Unicode Data, SQL Server Sort Order 52 on Code Page 1252 for non-Unicode Data

SQL Server 2012 Setup

Server Configuration

Specify the service accounts and collation configuration.

- Setup Support Rules
- Setup Role
- Feature Selection
- Installation Rules
- Instance Configuration
- Disk Space Requirements
- Server Configuration**
- Database Engine Configuration
- Error Reporting
- Installation Configuration Rules
- Ready to Install
- Installation Progress
- Complete

Service Accounts | Collation

Database Engine:

Latin1-General, case-insensitive, accent-sensitive, kanatype-insensitive, width-insensitive for Unicode Data, SQL Server Sort Order 52 on Code Page 1252 for non-Unicode Data

Installation Configuration Rules

Setup is running rules to determine if the installation process will be blocked. For more information, click Help.

- Setup Support Rules
- Setup Role
- Feature Selection
- Installation Rules
- Instance Configuration
- Disk Space Requirements
- Server Configuration
- Database Engine Configuration
- Error Reporting
- Installation Configuration Rules**
- Ready to Install
- Installation Progress
- Complete

Operation completed. Passed: 4. Failed 0. Warning 0. Skipped 0.

Hide details <<

Re-run

[View detailed report](#)

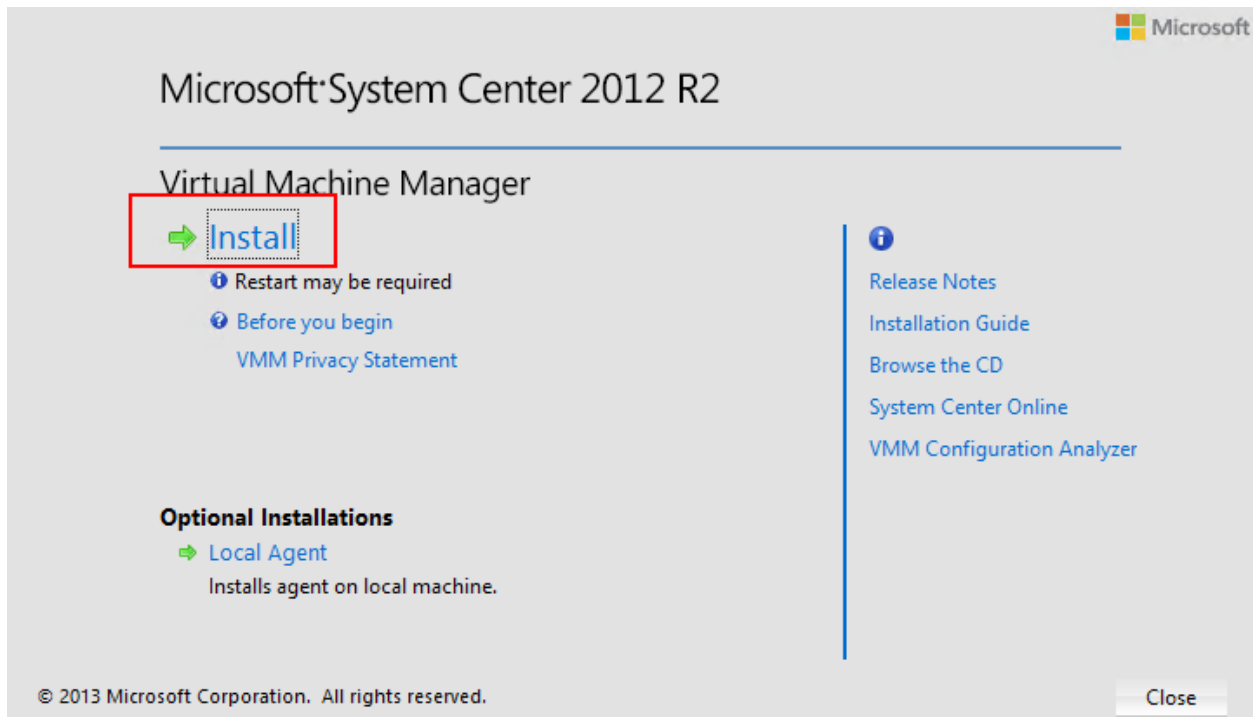
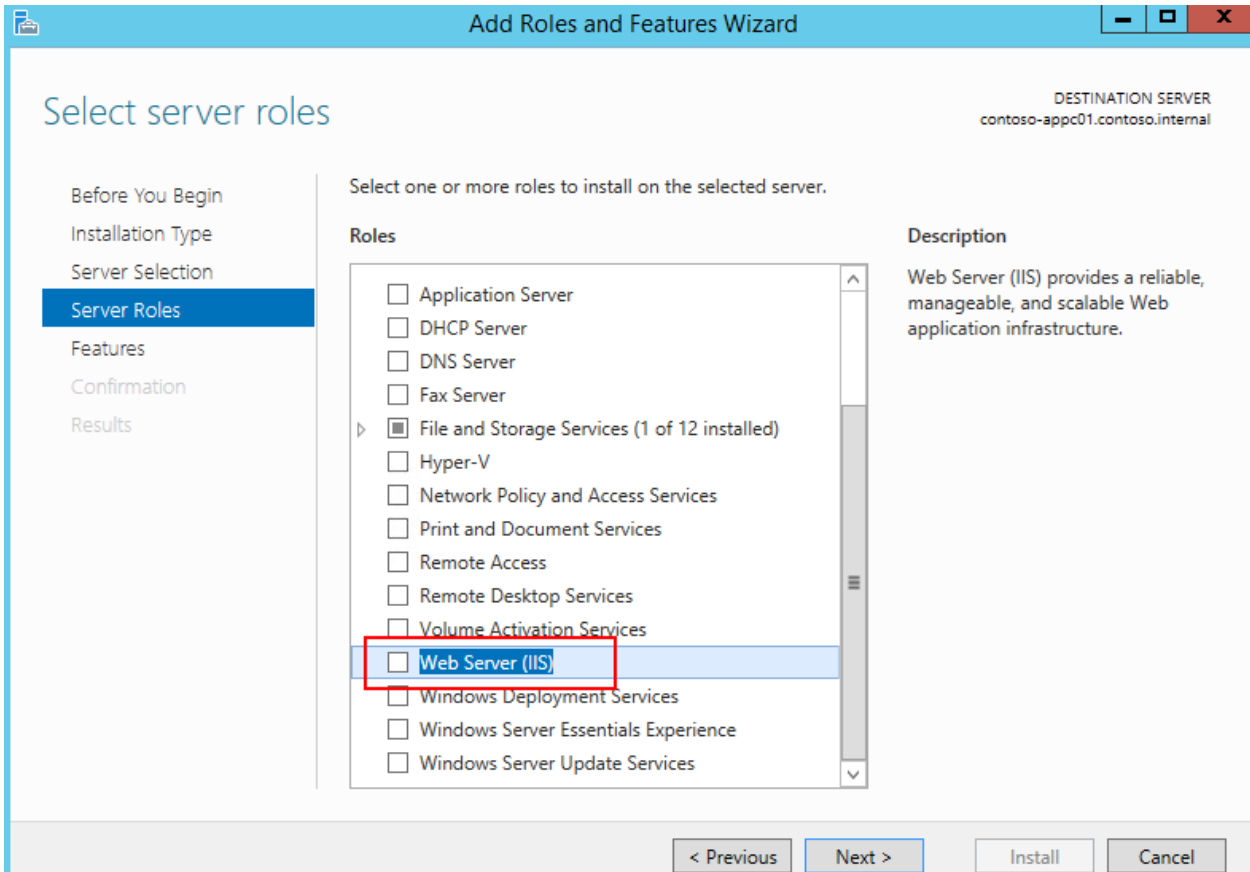
	Rule	Status
✓	FAT32 File System	Passed
✓	Existing clustered or cluster-prepared instance	Passed
✓	Cross language installation	Passed
✓	Same architecture installation	Passed

< Back

Next >

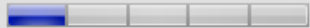
Cancel

Help



Getting started

[Report a problem](#)



Select features to install

VMM management server

Installs the Virtual Machine Manager service, which processes commands and controls communications with the VMM database, library servers, and virtual machine hosts.

This feature requires a SQL Server database and Windows Assessment and Deployment Kit (ADK) for Windows 8.1. ([View all installation requirements](#))

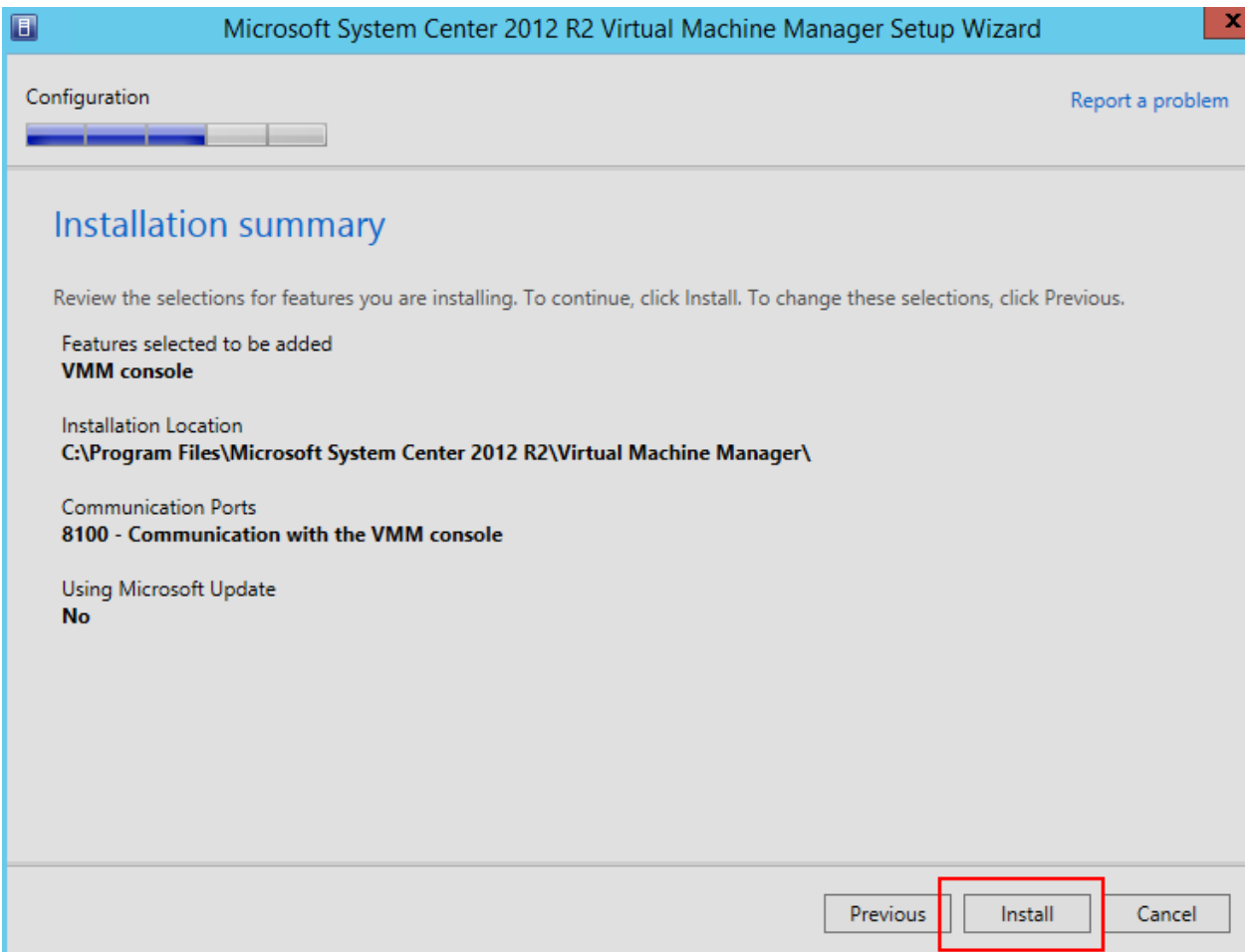
VMM console

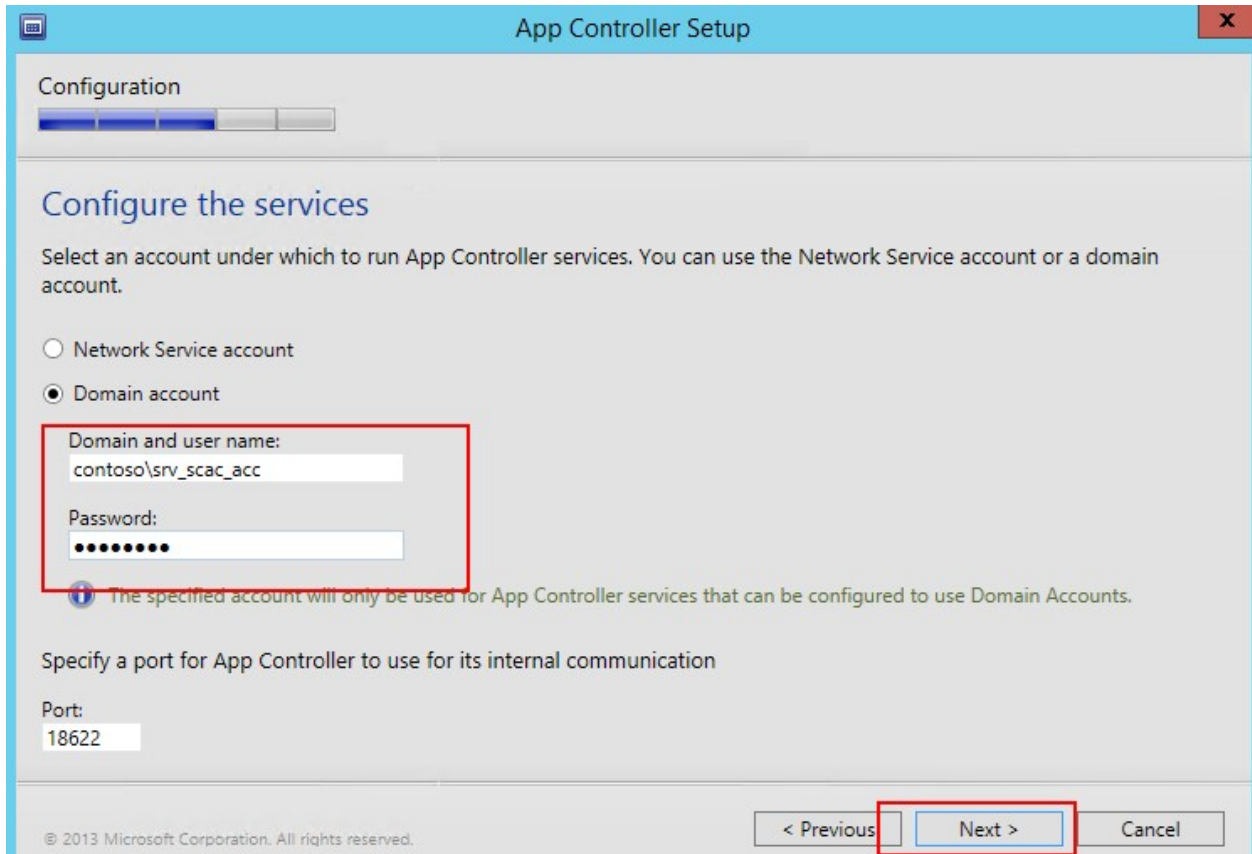
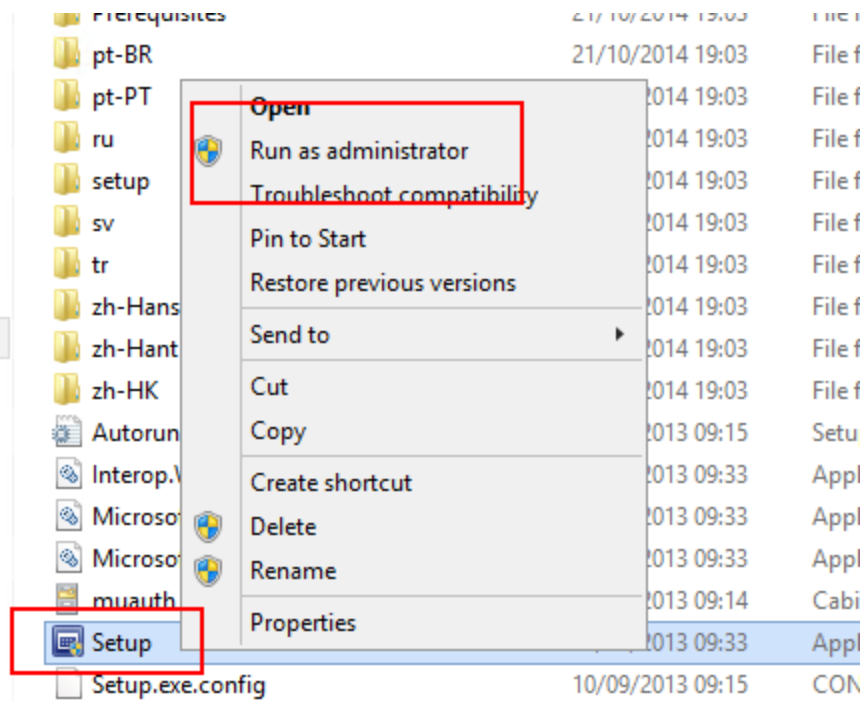
Installs a program that allows you to connect to a VMM management server to centrally view and manage resources, such as hosts, virtual machines, private clouds, and services. ([View all installation requirements](#))

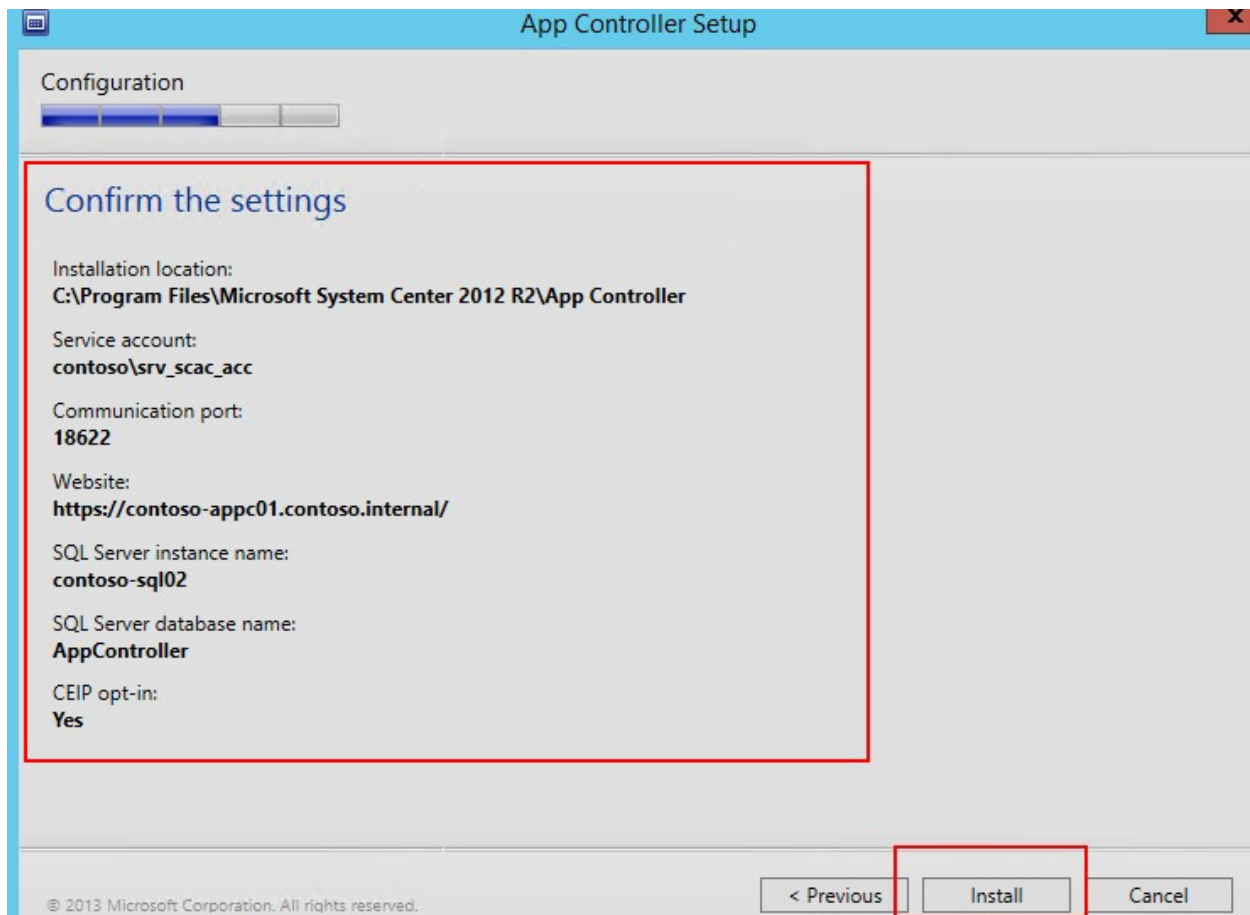
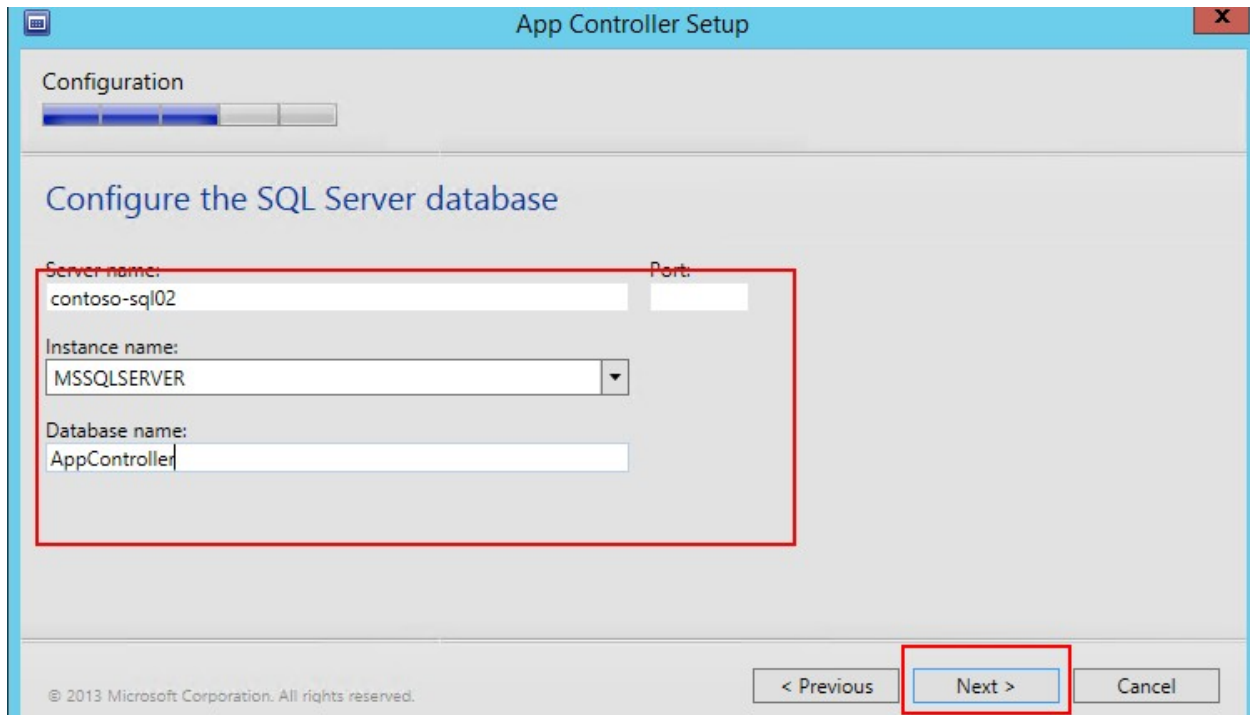
Previous

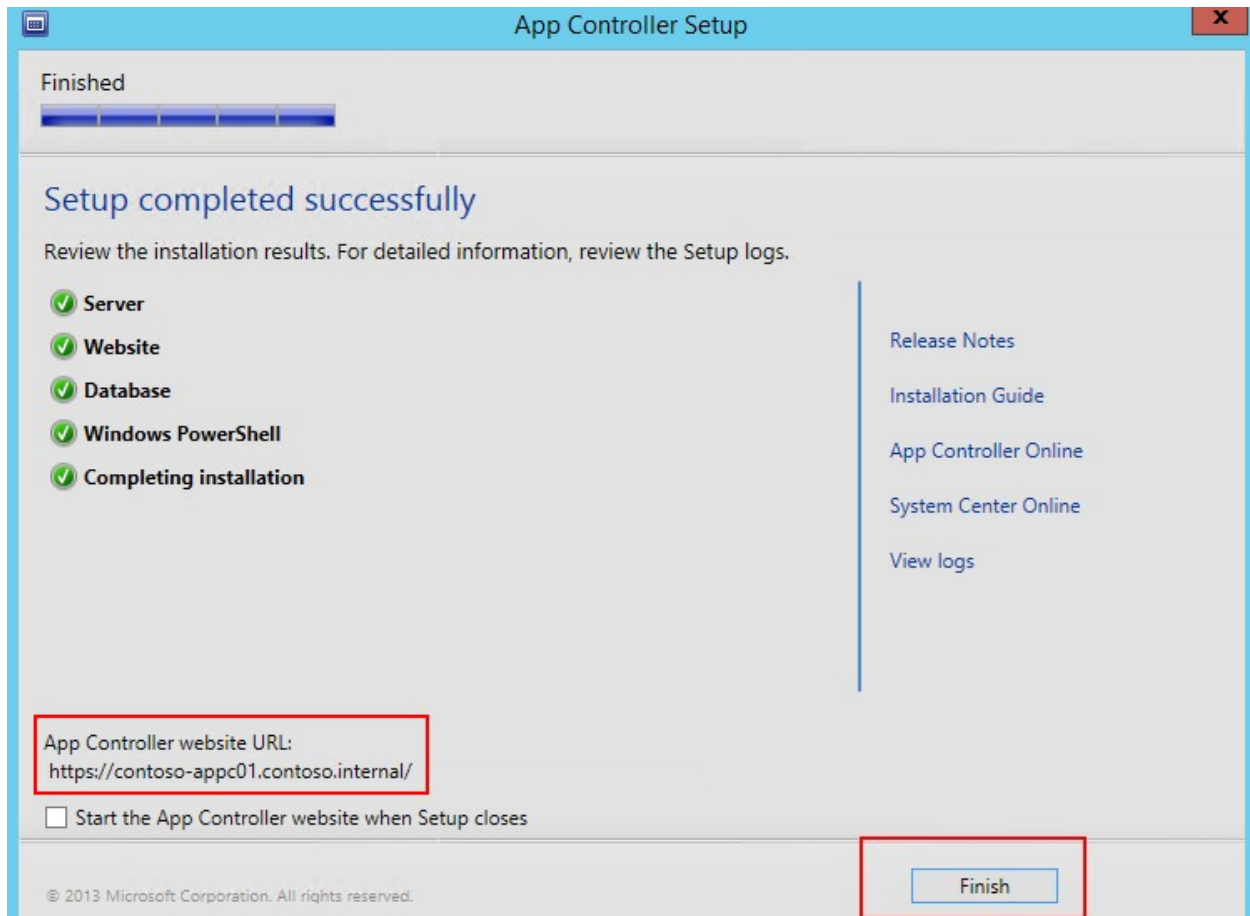
Next >

Cancel












Chapter 3: Deploying and Configuring System Center Virtual Machine Manager Server

Microsoft System Center 2012 R2

Virtual Machine Manager


 [Install](#)

 [Restart may be required](#)

 [Before you begin](#)

[VMM Privacy Statement](#)

Optional Installations

 [Local Agent](#)

Installs agent on local machine.



[Release Notes](#)

[Installation Guide](#)

[Browse the CD](#)

[System Center Online](#)

[VMM Configuration Analyzer](#)

Database configuration

Provide information about the database that you would like to use for your VMM management server.

Server name:

Port:

Use the following credentials

User name and domain:

Format: Domain\UserName

Password:

Instance name: ▼

Select an existing database or create a new database.

New database:

Existing database: ▼



Port configuration

Management Server

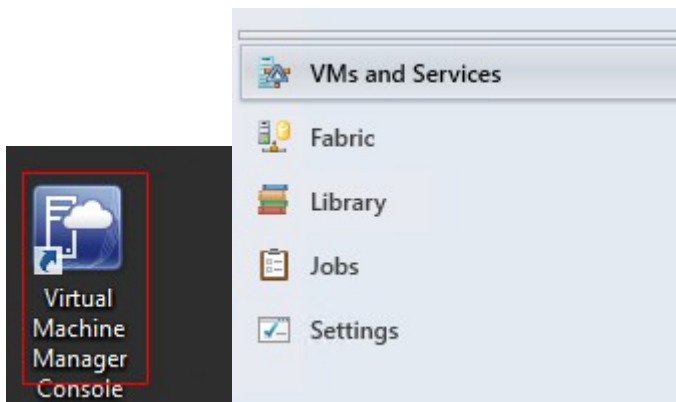
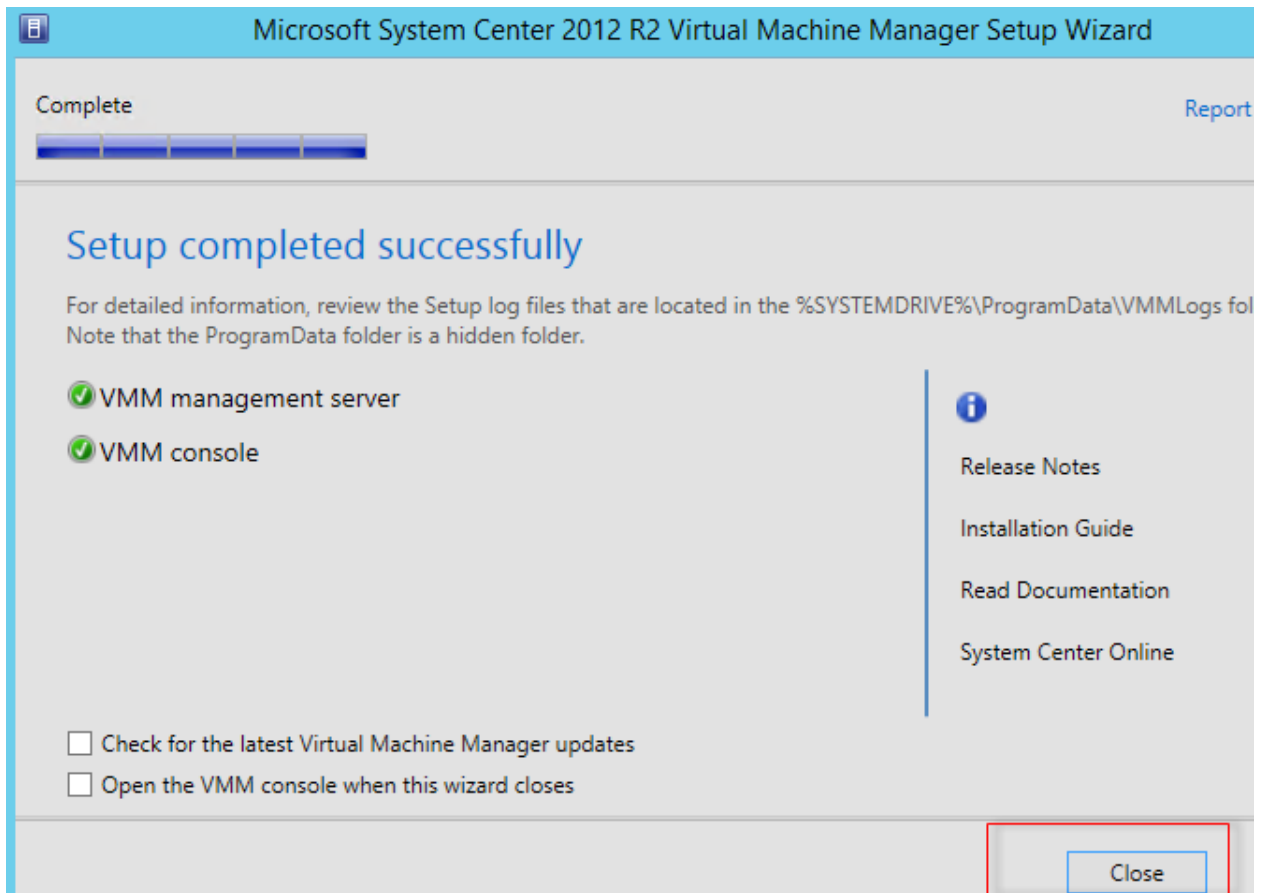
Please select the ports for various VMM features.

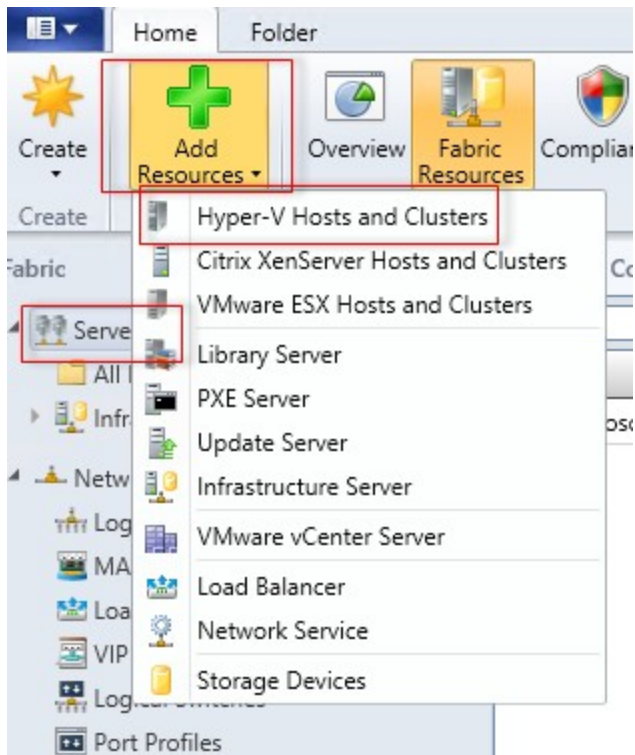
- | | |
|------|--|
| 8100 | Communication with the VMM console |
| 5985 | Communication to agents on hosts and library servers |
| 443 | File transfers to agents on hosts and library servers |
| 8102 | Communication with Windows Deployment Services |
| 8101 | Communication with Windows Preinstallation Environment (Windows PE) agents |
| 8103 | Communication with Windows PE agent for time synchronization |

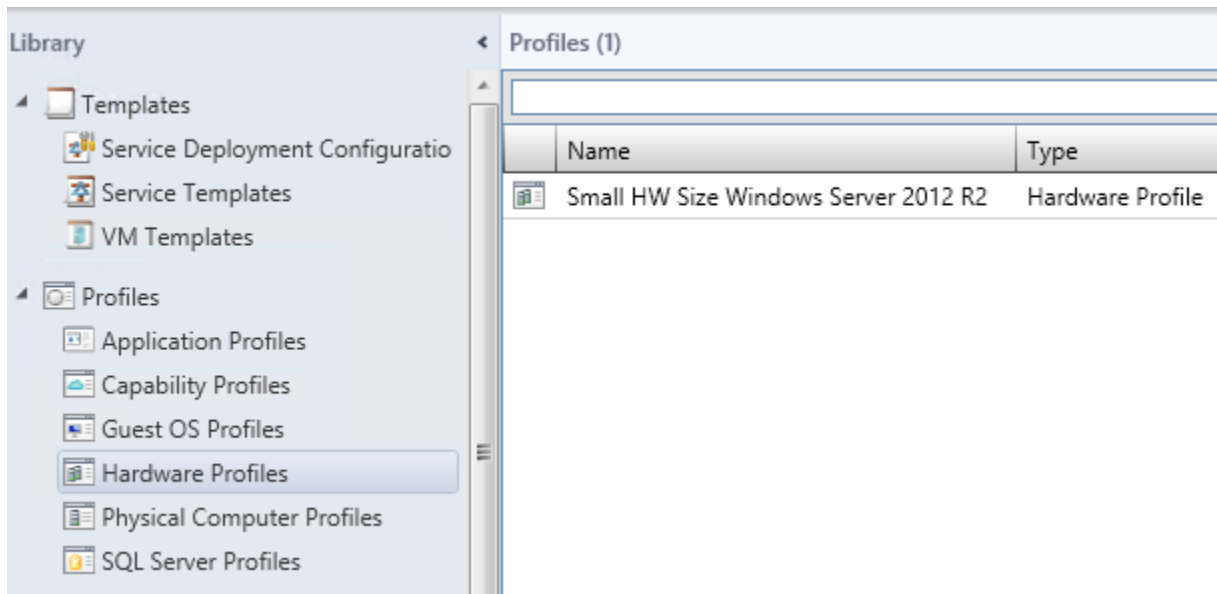
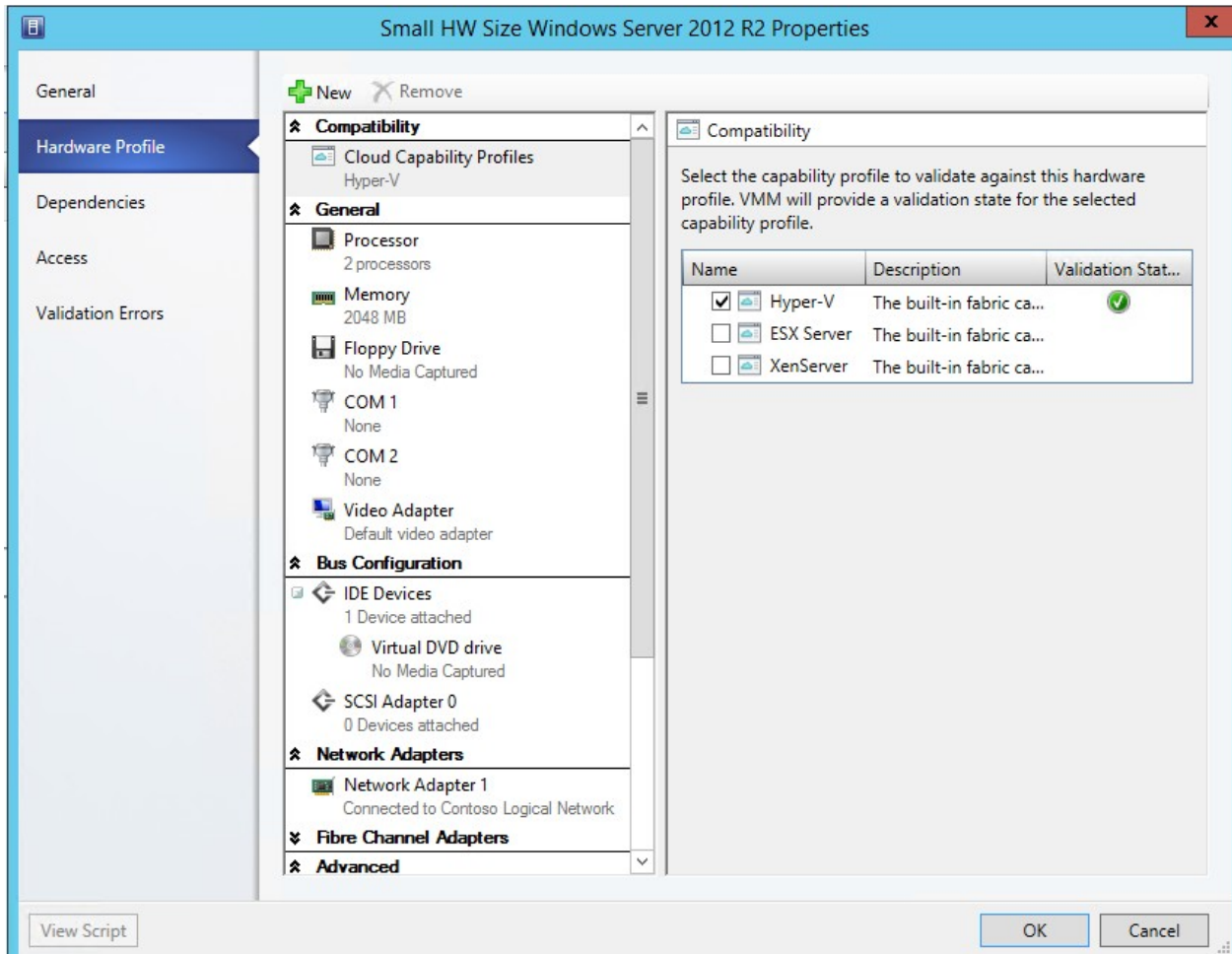
Previous

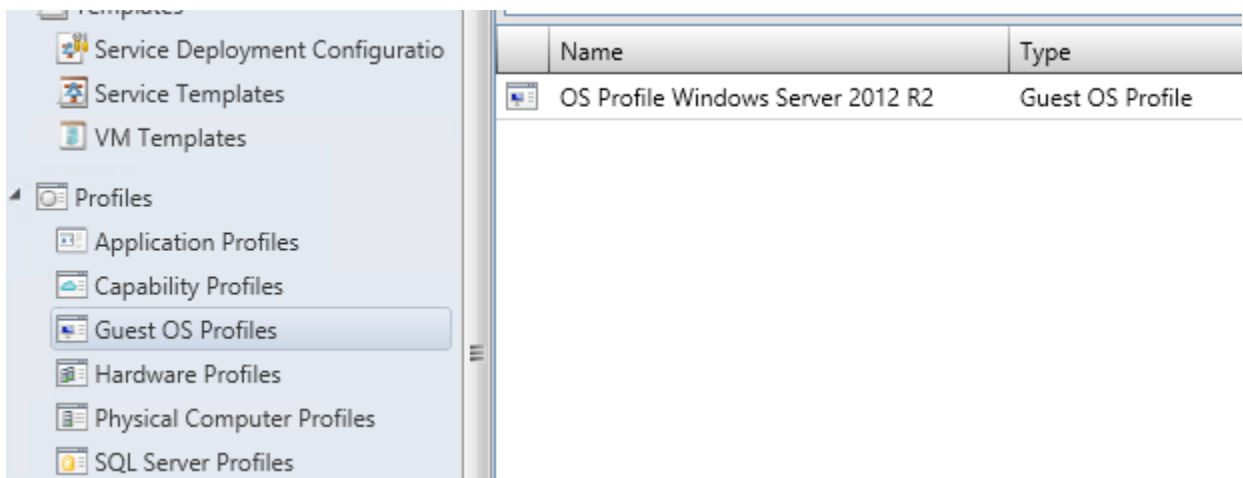
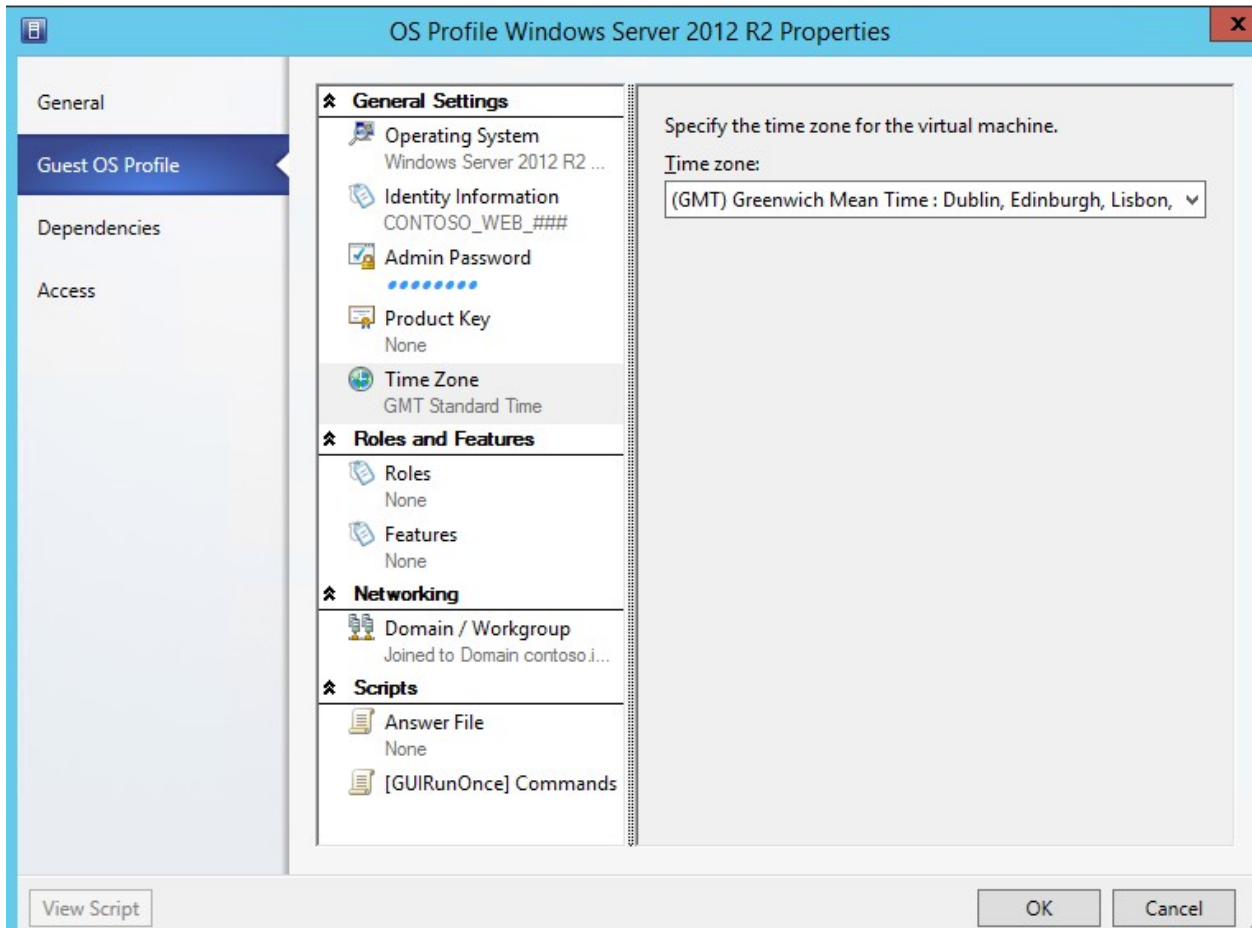
Next >

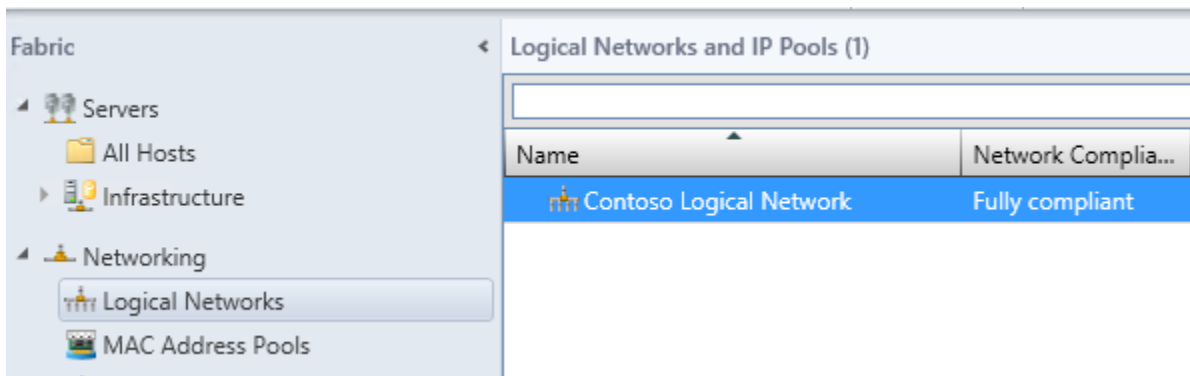
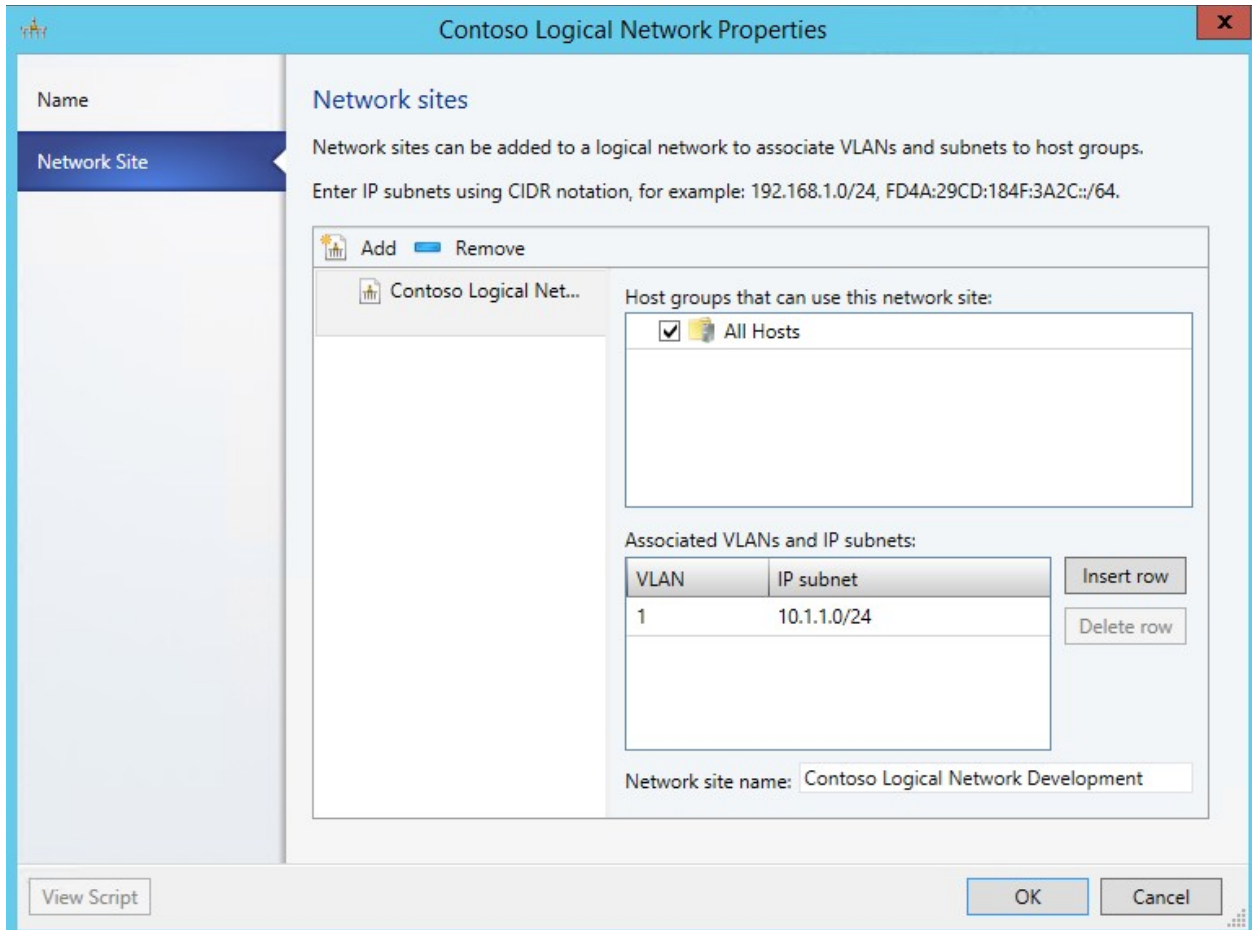
Cancel

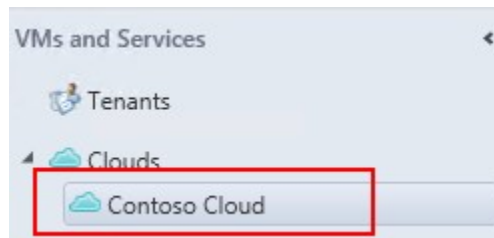
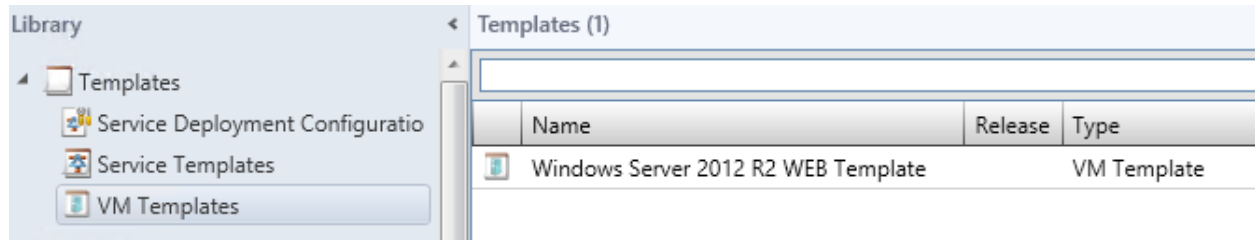












Chapter 4: Customizing App Controller




There is a problem with this website's security certificate.


The security certificate presented by this website was issued for a different website's address.

Security certificate problems may indicate an attempt to fool you or intercept any data you send to the server.

We recommend that you close this webpage and do not continue to this website.

 [Click here to close this webpage.](#)

 [Continue to this website \(not recommended\).](#)

 [More information](#)

Enter your credentials to sign in

User name:

Password:

© 2013 Microsoft. All rights reserved.

Microsoft System Center 2012 R2

Overview

- Overview
- Clouds
- Services
- Virtual Machi
- Library
- Jobs
- Settings

Status

Private Clouds Public Clouds Hosting Service Providers

- Connect a Virtual Machine Manager server and clouds
- Connect a Windows Azure subscription
- Add an external service provide

Next Steps

Common Tasks

- Connect a Virtual Machine Manager server and clouds
- Connect a Windows Azure subscription
- Add a network file share

Online Help

- Obtain a Windows Azure subscription
- Use network file shares for templates and resources
- Manage private cloud quota
- Manage services
- Create service templates
- Add a service template to a cloud
- Moving from virtual machines to services

Community

System Center Blogs

Recent Forum Posts

RSS feed is empty

RSS feed is empty

Overview

Status

Private Clouds

 [Connect a Virtual Machine Manager server and...](#)

x



Add a new VMM connection

You can only add a connection to a System Center 2012 R2 Virtual Machine Manager management server.

Connection name: *

DataCenter Telecity_Contoso-VMM01

Description:

Colo 01 Telecity-Dev Virtual Machine Manager

Server name: *

Contoso-vmm01.contoso.interna

Port: *

8100

Automatically import SSL certificates

To copy files and templates to and from a VMM management server, App Controller must import SSL certificates from the management server.

[More about importing certificates](#)

OK

Cancel

Overview

- Overview
- Clouds
- Services
- Virtual Machines
- Library
- Jobs
- Settings
- Connections
- Subscriptions
- User Roles

Overview

Status

Private Clouds

- 1 Virtual Machine Manager server
- 1 Virtual Machine Manager cloud

0 Virtual machines

Current resource usage:

0	unlimited	Virtual machines
0	unlimited	Processors
0 GB	unlimited	Storage
0 MB	unlimited	Memory

Overview

- Overview
- Clouds
- Services
- Virtual Machines
- Library
- Jobs
- Settings

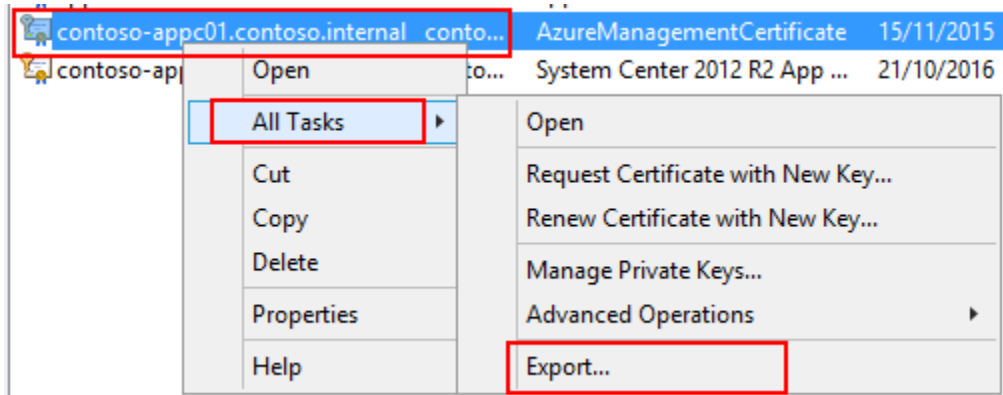
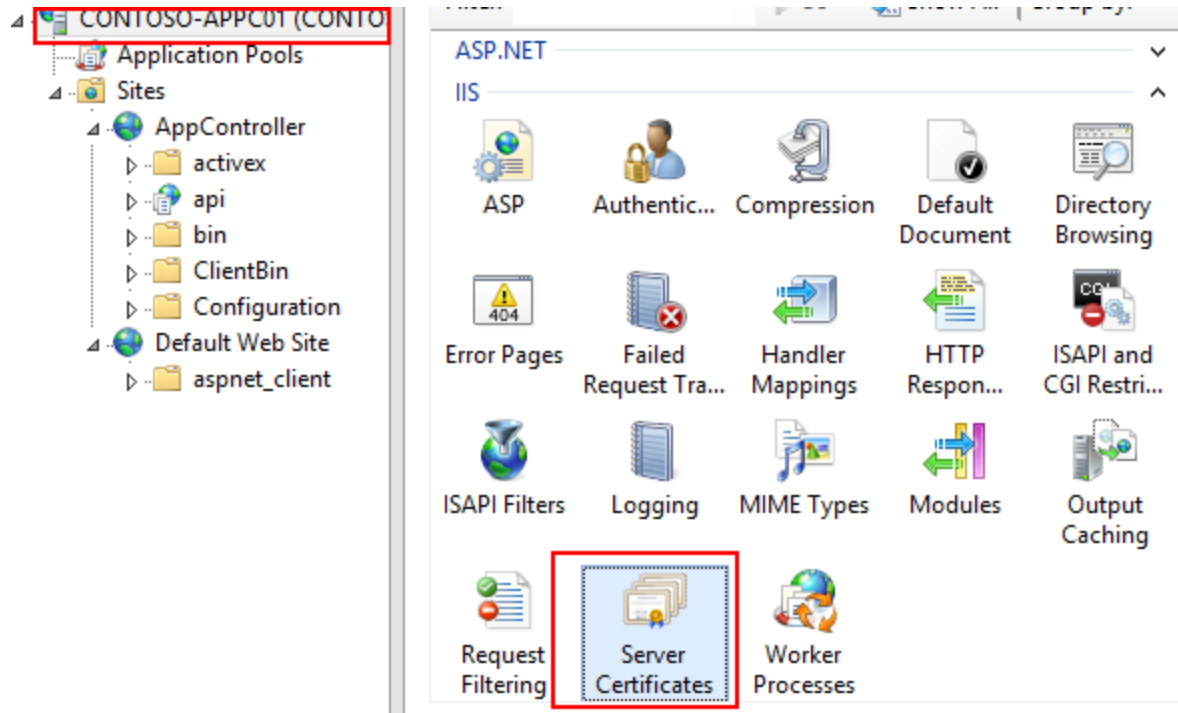
Clouds (1)

Connect | Deploy | Manage Run As accounts

DataCenter Telecity_Contoso-VMM01
Contoso Cloud

Cloud has no services

0	unlimited	Virtual Machines
0	unlimited	Processors
0 GB	unlimited	Storage
0 MB	unlimited	Memory



- 0
- CDN 0
- AUTOMATION 0
- SCHEDULER 0
- API MANAGEMENT 0
- MACHINE LEARNING 0
- NETWORKS 1
- TRAFFIC MANAGER 0
- MANAGEMENT SERVICES
- ACTIVE DIRECTORY 1
- MARKETPLACE 0
- STORSIMPLE 0
- SETTINGS**

settings

SUBSCRIPTIONS **MANAGEMENT CERTIFICATES** ADMINISTRATORS

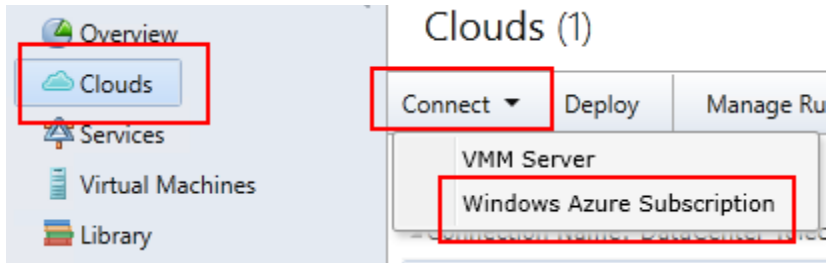
You have no management certificate.

[UPLOAD A MANAGEMENT CERTIFICATE](#) 

 NEW

 UPLOAD

 DELETE



Connect a Windows Azure subscription

Name: *

Azure Demo Environment

Description:

demo subscription

Subscription ID: *

00000000-0000-0000-0000-000000000000

Management certificate: *

AzureManagementCertificate.pfx Browse...

Management certificate password: *

••••••••

OK Cancel

Virtual Machines (2)

Name	Status	Cloud Name	Connection Name	Service Name	CPU Usage	Memory	VM Size
INF-DEMO-CM-01	Stopped...	Azure...	Windows Azure	INF-DEMO-...			Basic_A3
INF-DEMO-DC-01	Stopped...	Azure...	Windows Azure	INF-DEMO-...			Basic_A1

Clouds

Name	Connection Name	Description
▲Connection Name: DataCenter Telecity_VMM01		
Contoso Cloud	DataCenter...	
▲Connection Name: Windows Azure		
Azure Demo Environment	Windows Azure	demo subscription

Create User Role

Create Run As Account

Create Servicing Window

Import Console Add-in

Settings

- General
- Security
 - User Roles
 - Run As Accounts
- Servicing Windows
- Configuration Providers
- System Center Settings
- Console Add-ins

User Roles (1)

Name
Administrator

Select a user role profile for this user role

The profile that you select determines the actions that will be available for members of this user role.

- Fabric Administrator (Delegated Administrator)
- Read-Only Administrator
- Tenant Administrator
- Application Administrator (Self-Service User)

User role profile description:

Tenant administrators manage self-service users and VM networks. Tenant administrators create, deploy, and manage their own virtual machines and services by using the VMM console or a web portal. A tenant administrator user role specifies which tasks the users can perform on their virtual machines and services and can place quotas on computing resources and virtual machines.

Microsoft System Center 2012 R2

App Controller

Enter your credentials to sign in

User name:

contoso\contoso_tenant01

Password:

••••••••

Sign In

- Overview
- Clouds**
- Services
- Virtual Machines
- Library
- Jobs

Clouds (1)

Deploy Manage Run As accounts Last refresh: 16:13:28

Name	Connection Name	Description
Connection Name: DataCenter Telicity_Contoso-VMM01		
Contoso Cloud	DataCenter...	

Overview

Current resource usage:

0	unlimited	Virtual machines
0	unlimited	Processors
0 GB	unlimited	Storage
0 MB	unlimited	Memory

Next Steps

Common Tasks

- Connect a Virtual Machine Manager server and clouds
- Connect a Windows Azure subscription
- Add a network file share**

Add a network shared folder

Example: \\server\share

Share path: *

\\CONTOSO-APPC01\SCAC_Share

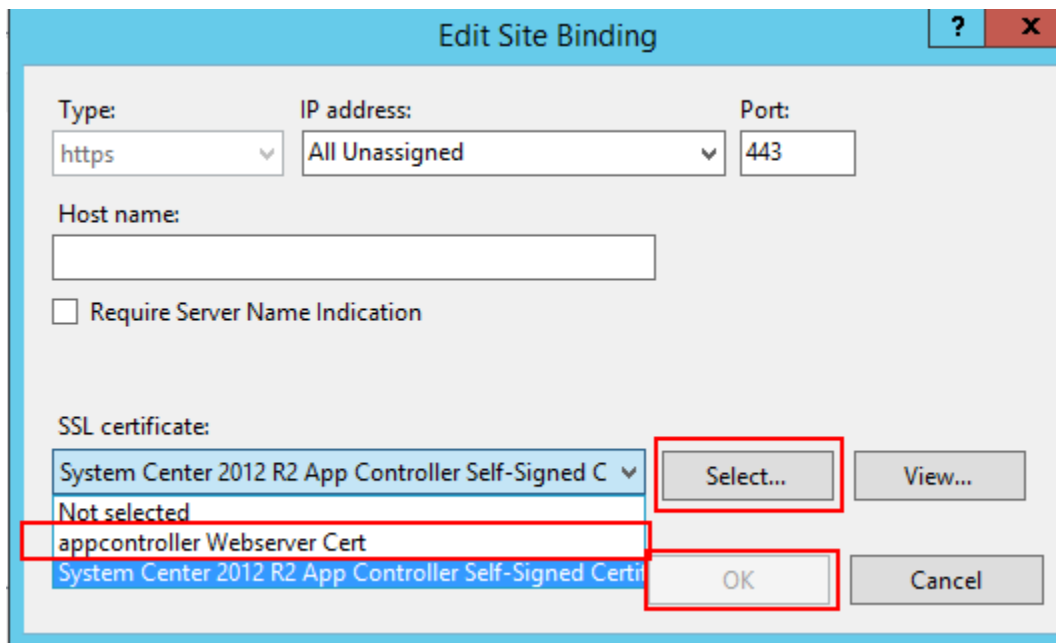
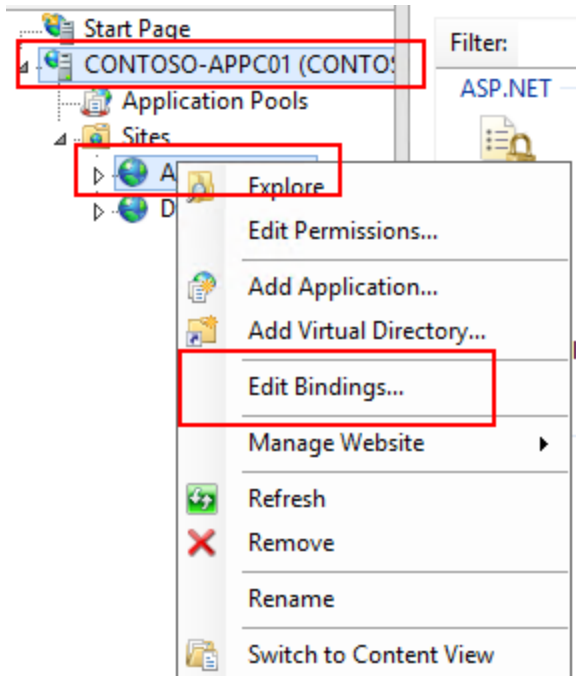
OK Cancel

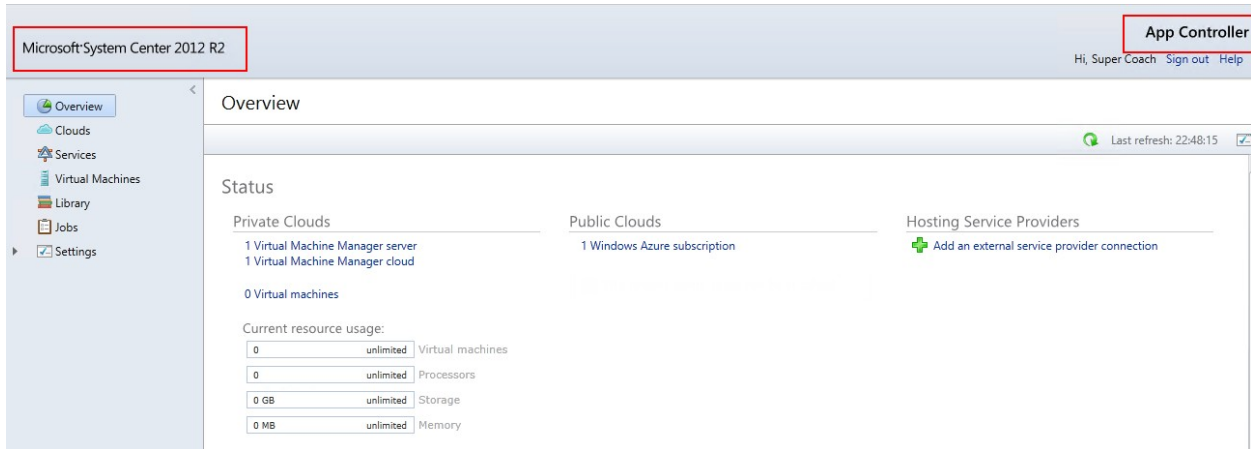
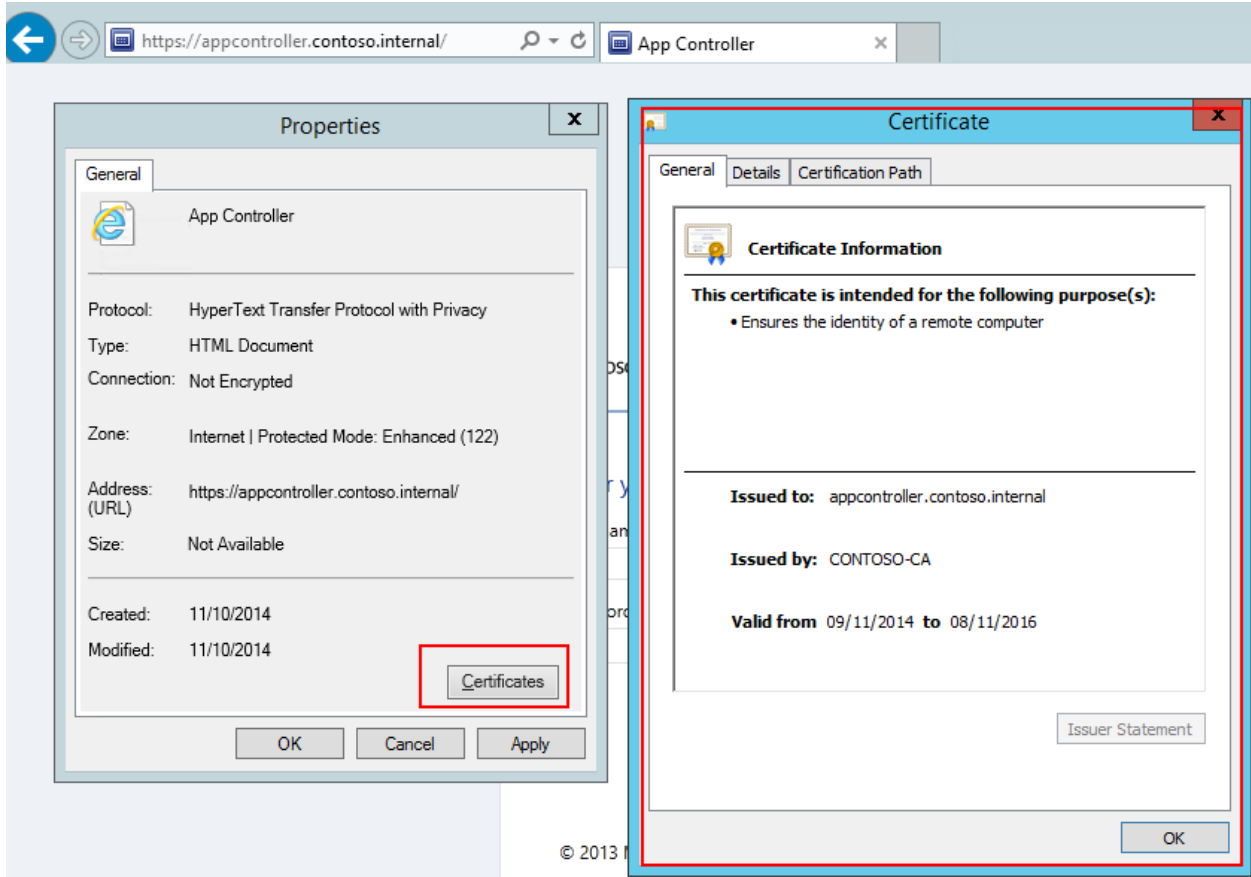
Shares

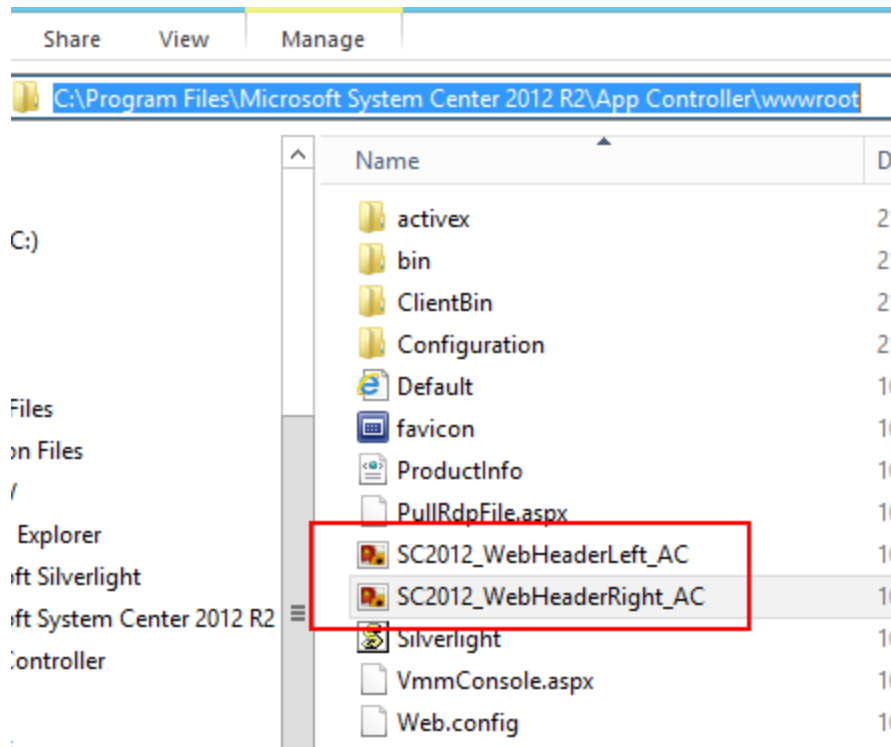
Add Remove

Shares	
\\CONTOSO-APPC01\SCAC_Share	
Windows Azure	
DataCenter Telemetry_Contoso-VMM01	

Name
\\CONTOSO-APPC01\SCAC_Share







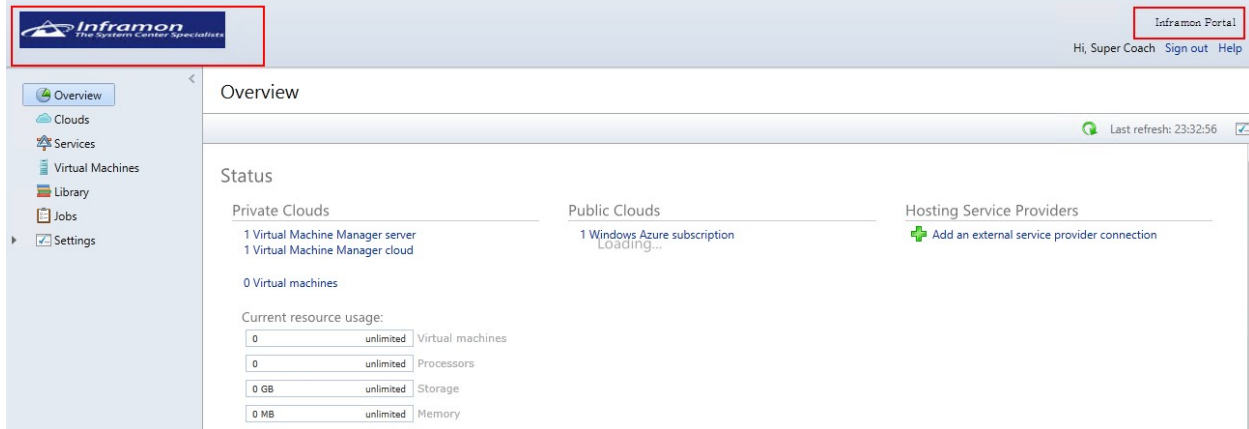
Inframon Portal

Enter your credentials to sign in

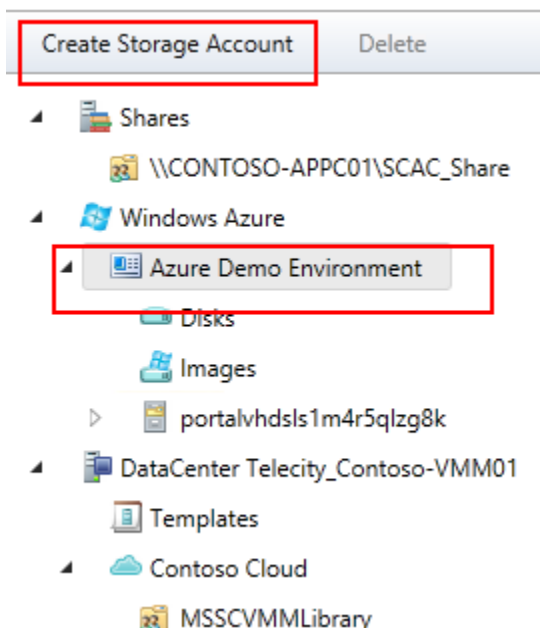
User name:

Password:

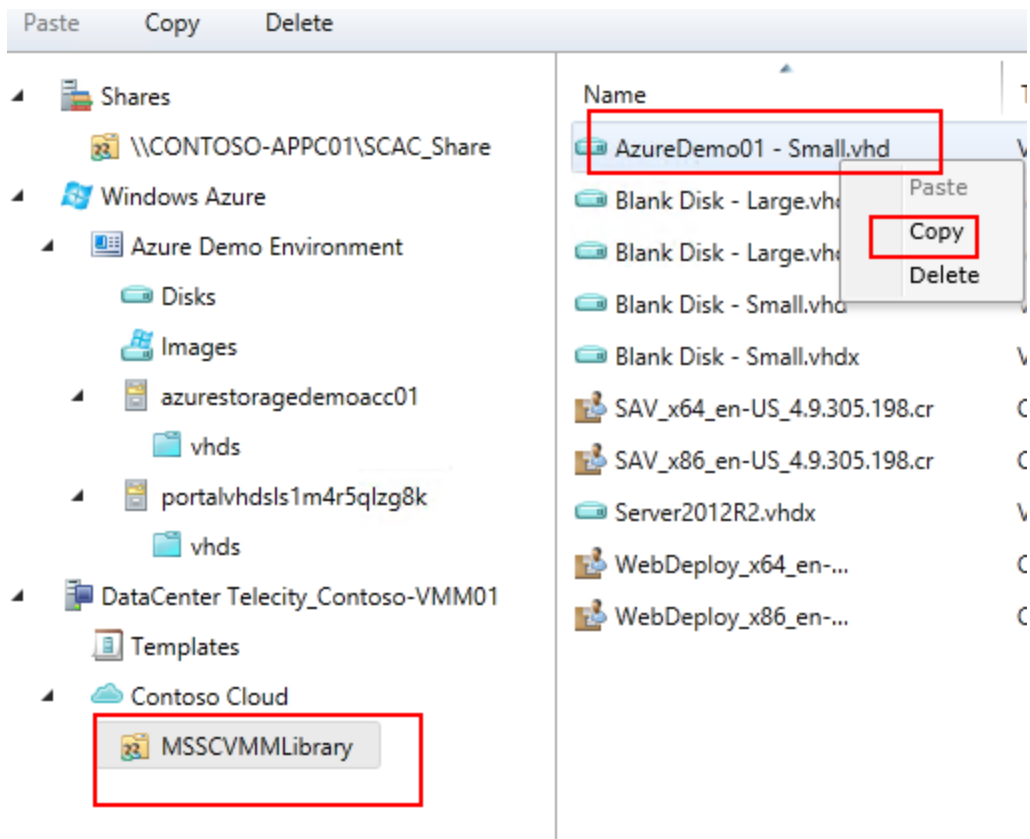
Sign In

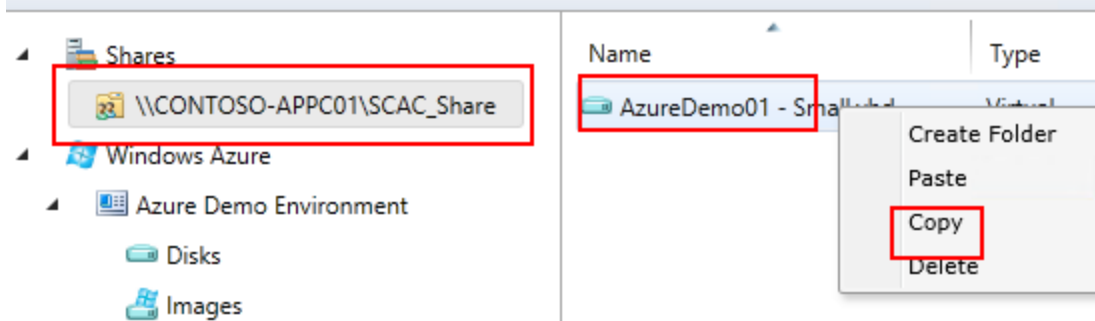


Chapter 5: Exploring Advanced Options

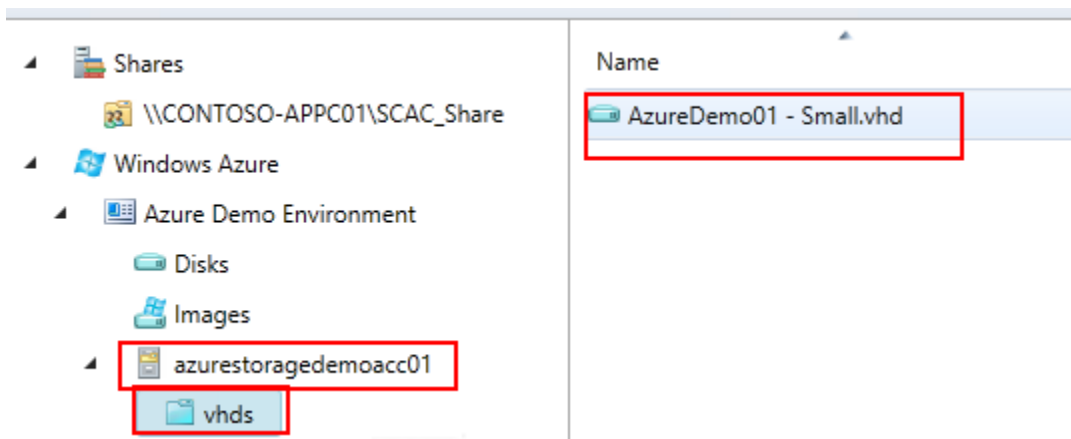
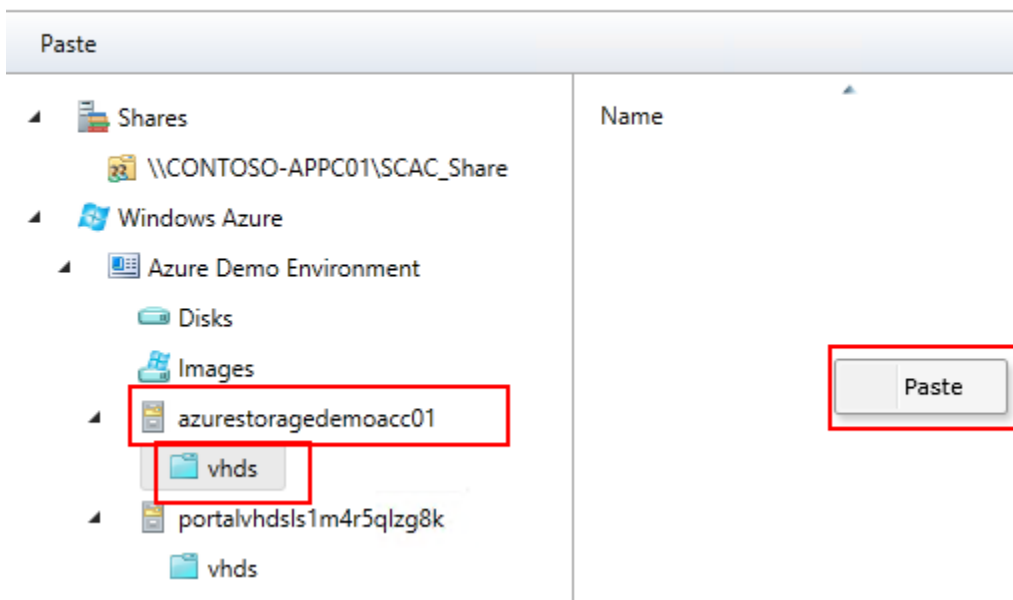


```
Import-Module AppController
$cred= 'get-credential'
$scac= 'https://appcontroller.contoso.internal'
Get-SCACServer -ServerName $scac -Credential $cred
```





vhds



vhds

vhds

NAME	URL
AzureDemo01 - Small.vhd	https://azurestoragedemoacc01.j



Microsoft System Center 2012 R2

App Controller

➔ **Install**

i You might have to restart the computer after you install App Controller.

Use Microsoft Update to check for updates to App Controller Setup.

[Read the Update Services privacy statement](#)

Standalone components

~~Install standalone components.~~

➔ [Install Windows PowerShell module for App Controller](#)

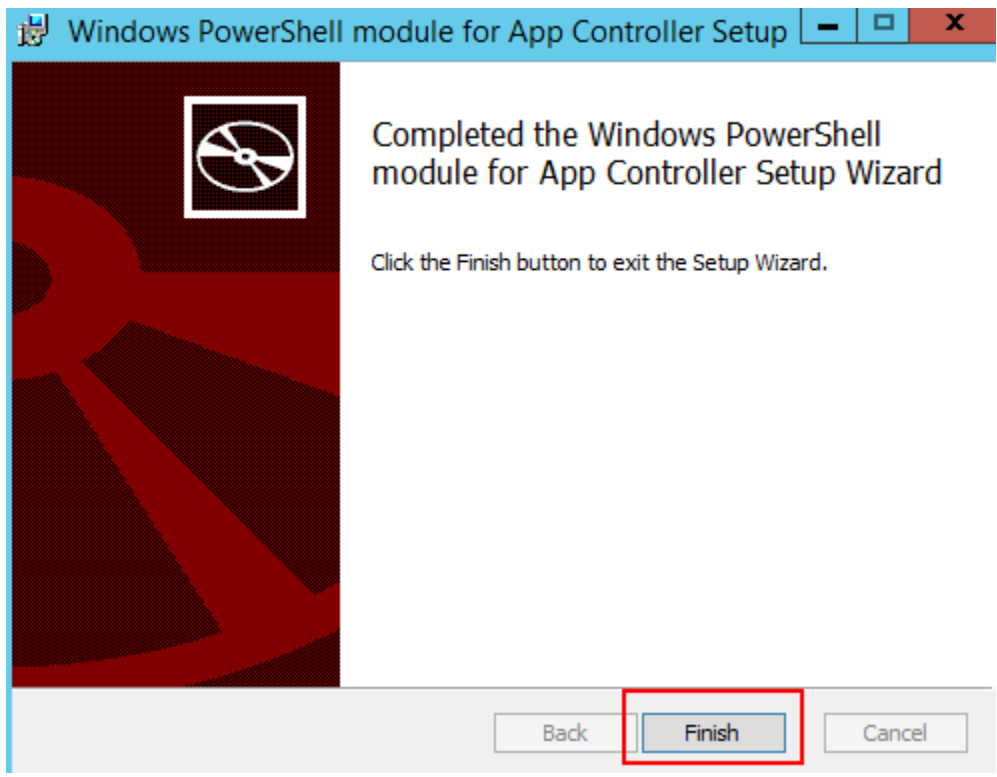
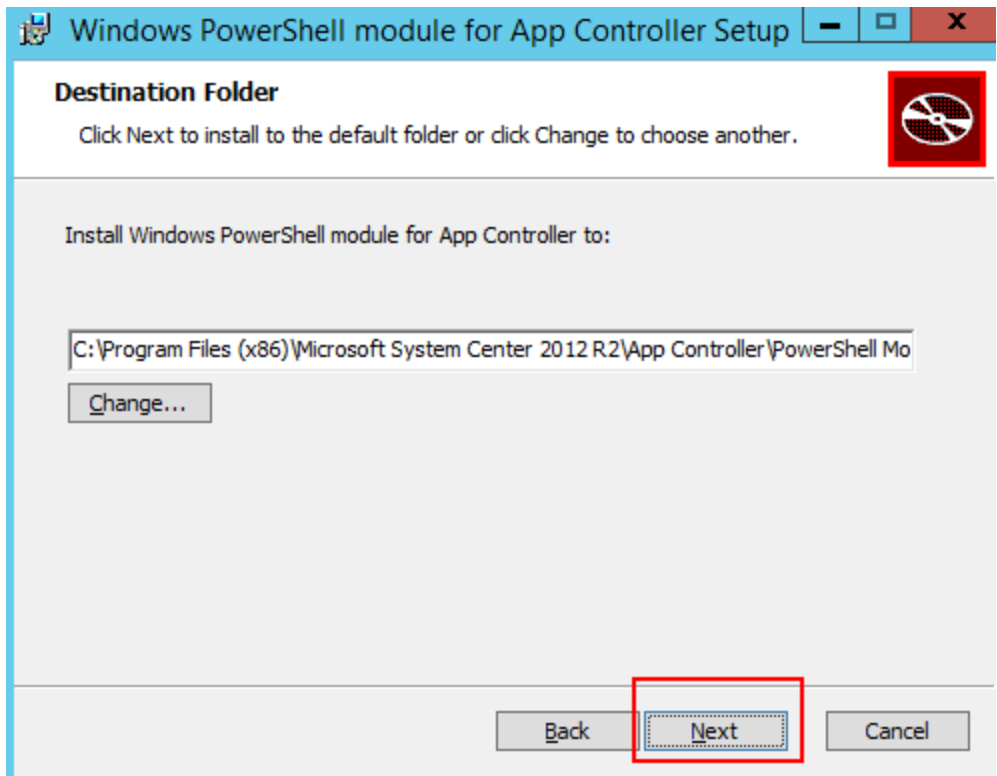
[Release Notes](#)

[Installation Guide](#)

[App Controller Online](#)

[System Center Online](#)

Close





Administrator:

```
PS C:\Windows\system32> Import-Module AppController  
PS C:\Windows\system32> _
```


Name	Module
-----	-----
Add-SCACAzureDisk	AppController
Add-SCACAzureImage	AppController
Add-SCACAzureSubscription	AppController
Add-SCACCloudSystem	AppController
Add-SCACShare	AppController
Export-SCACAesKey	AppController
Get-SCACAdminSetting	AppController
Get-SCACAzureHostedService	AppController
Get-SCACAzureRoleInstance	AppController
Get-SCACAzureServiceDeployment	AppController
Get-SCACAzureSubscription	AppController
Get-SCACCloudSystem	AppController
Get-SCACJob	AppController
Get-SCACServer	AppController
Get-SCACShare	AppController
Get-SCACTemporaryStorage	AppController
Get-SCACUserRole	AppController
New-SCACUserRole	AppController
New-SCACUserRoleScope	AppController
Remove-SCACAzureSubscription	AppController
Remove-SCACCloudSystem	AppController
Remove-SCACShare	AppController
Remove-SCACUserRole	AppController
Resume-SCACServiceDeployment	AppController
Set-SCACAdminSetting	AppController
Set-SCACCloudSystem	AppController
Set-SCACTemporaryStorage	AppController
Set-SCACUserRole	AppController
Suspend-SCACServiceDeployment	AppController

```
1 Import-Module AppController
2 $cred= get-credential
3 $scac= 'https://appcontroller.contoso.internal'
4 Get-SCACServer -ServerName $scac -Credential $cred
5
6
7
```

```
C:\Windows\system32> Import-Module AppController
cred= get-credential
scac= 'https://appcontroller.contoso.internal'
et-SCACServer -ServerName $scac -Credential $cred
```

cmdlet Get-Credential at command pipeline position 4
Supply values for the following parameters:

cmdlet Get-Credential at command... ? X

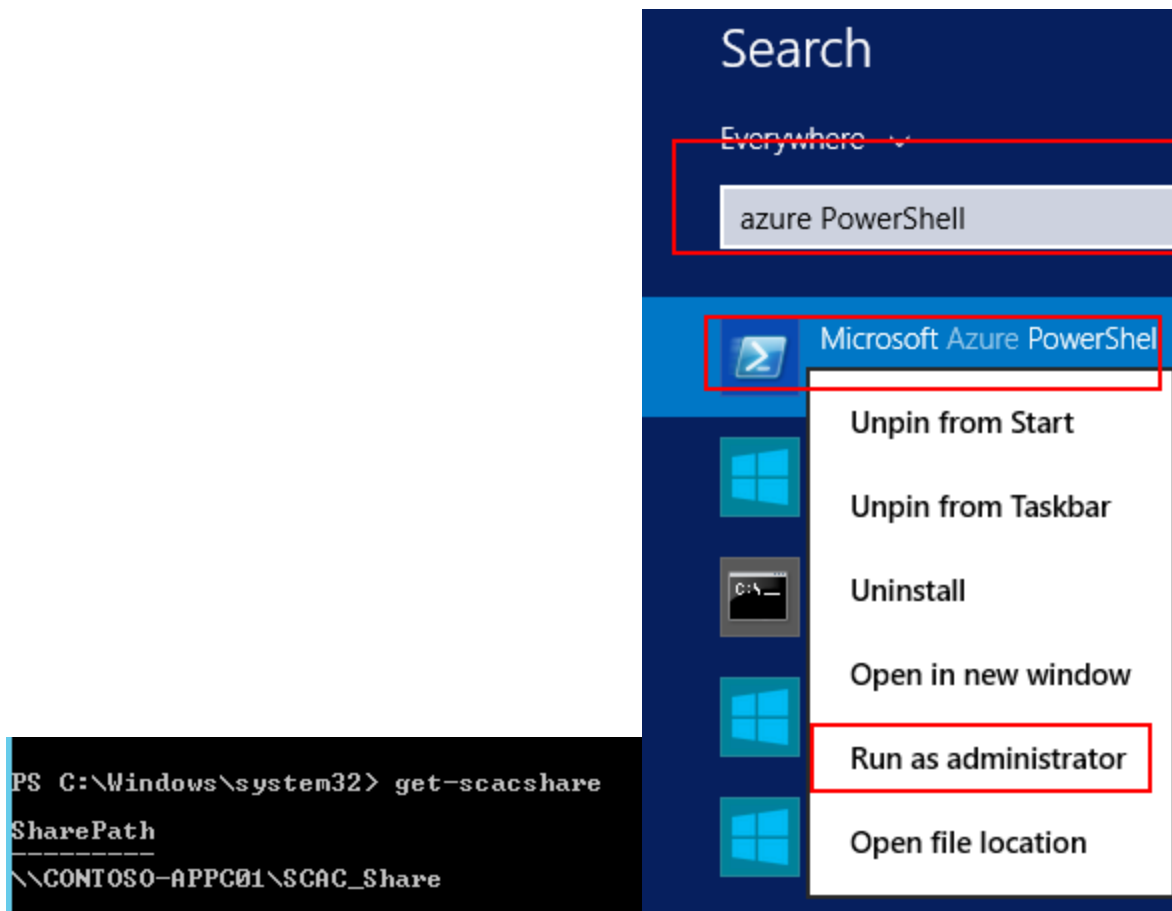


Supply values for the following parameters:

User name: ...

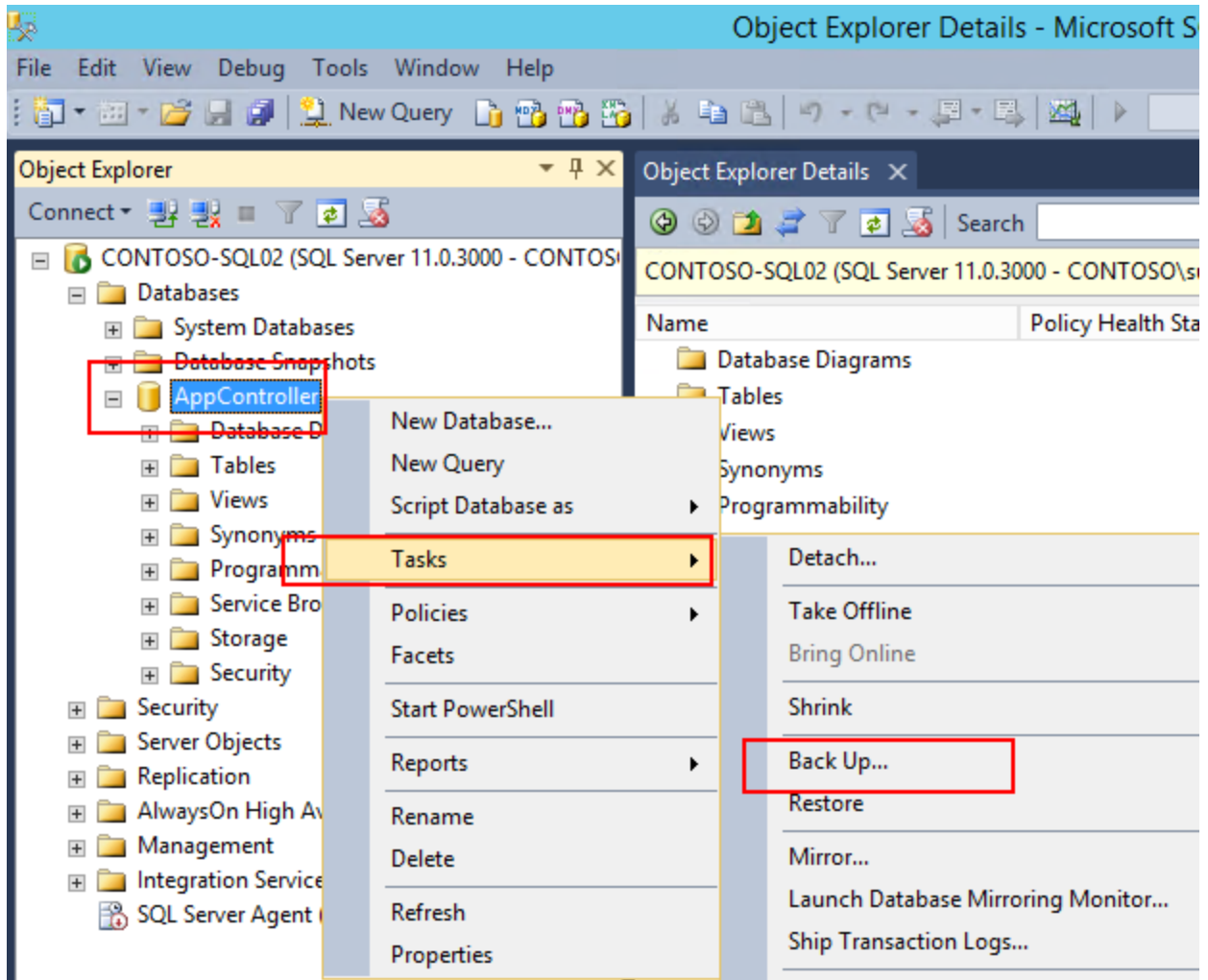
Password:

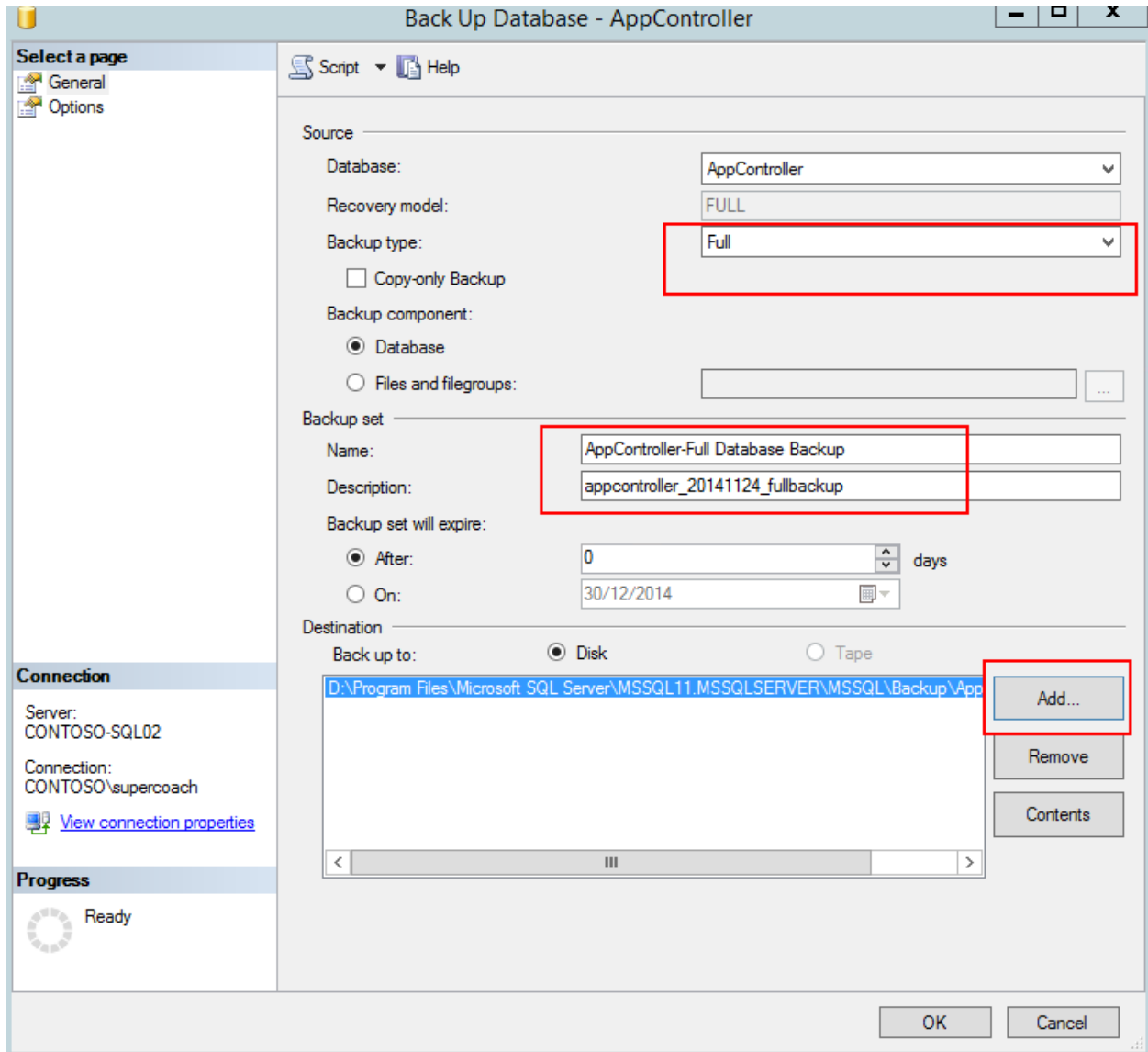
OK Cancel

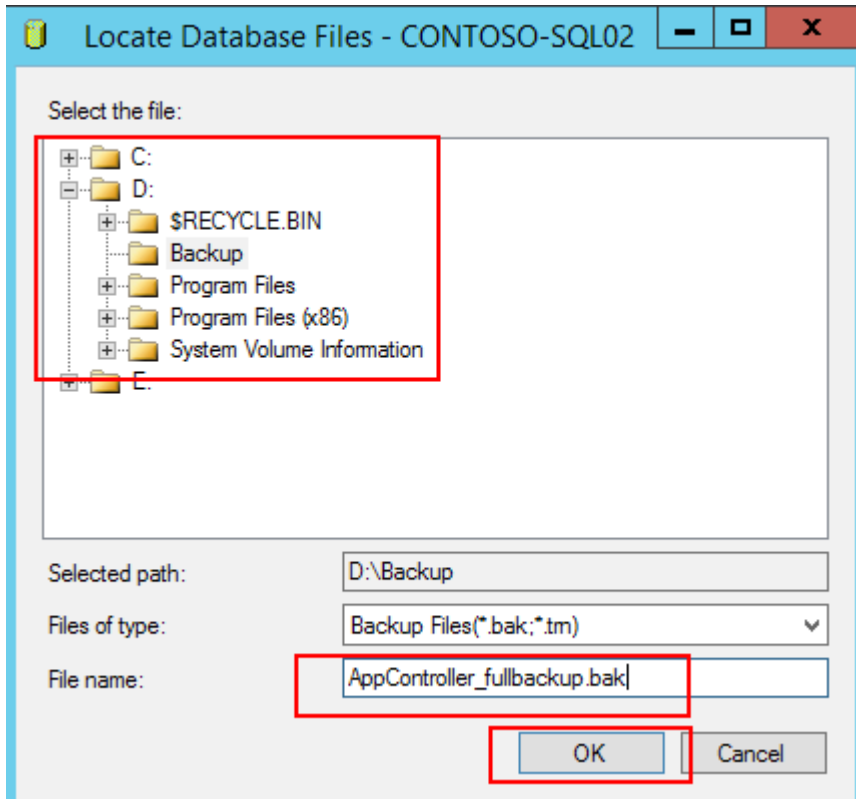
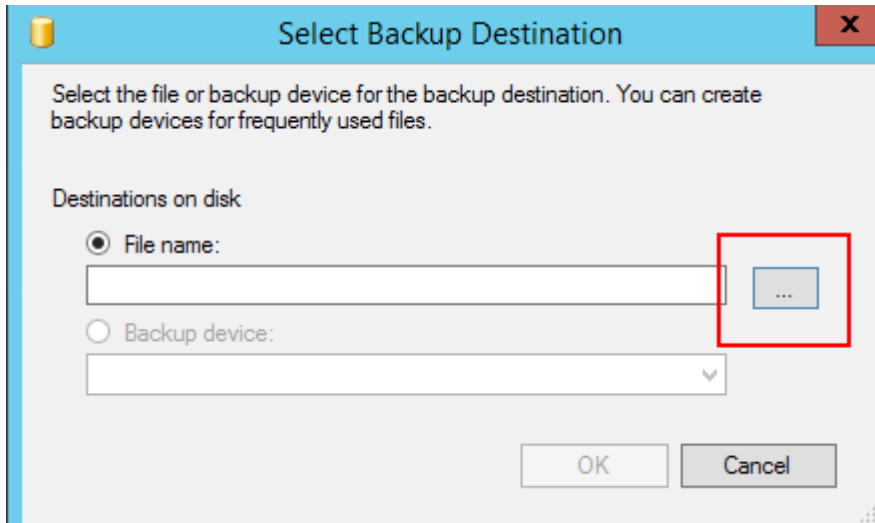


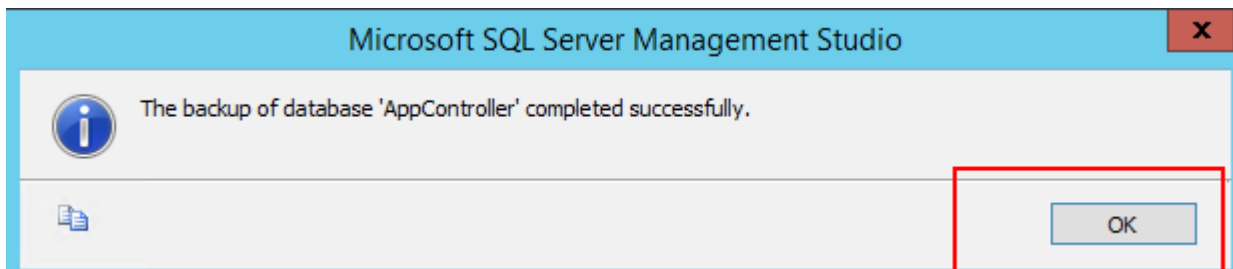
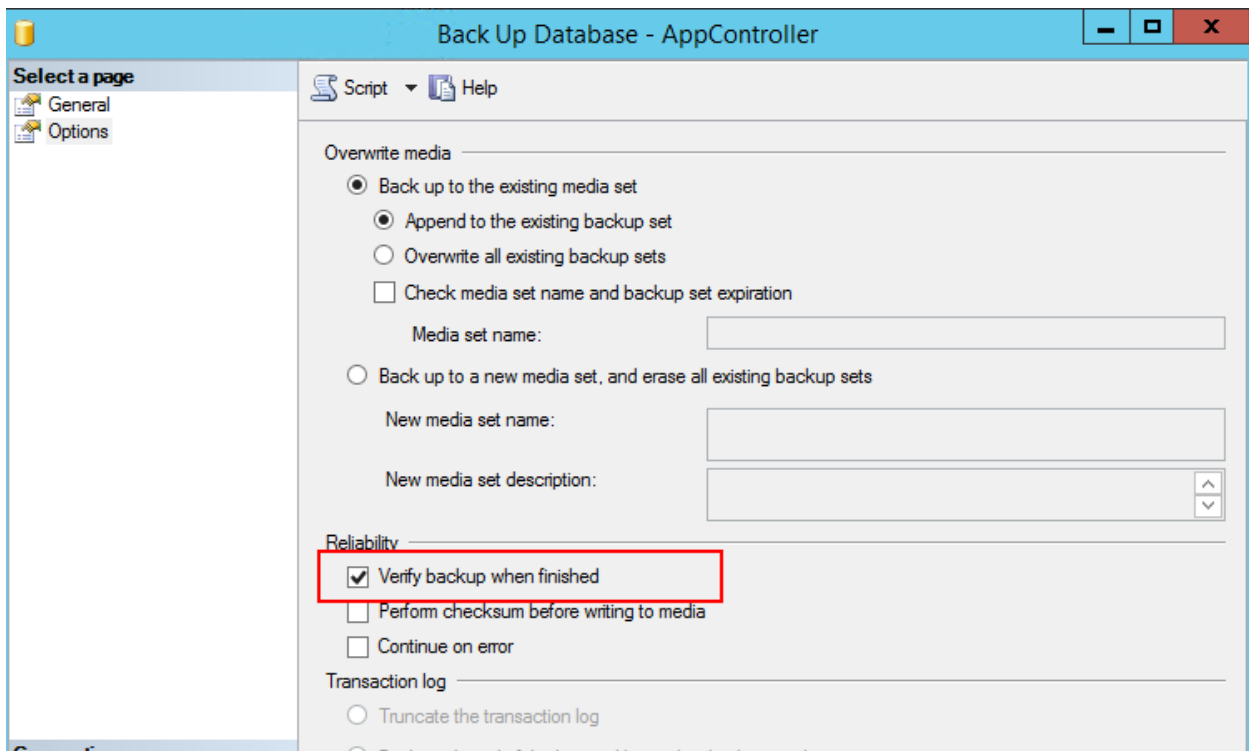
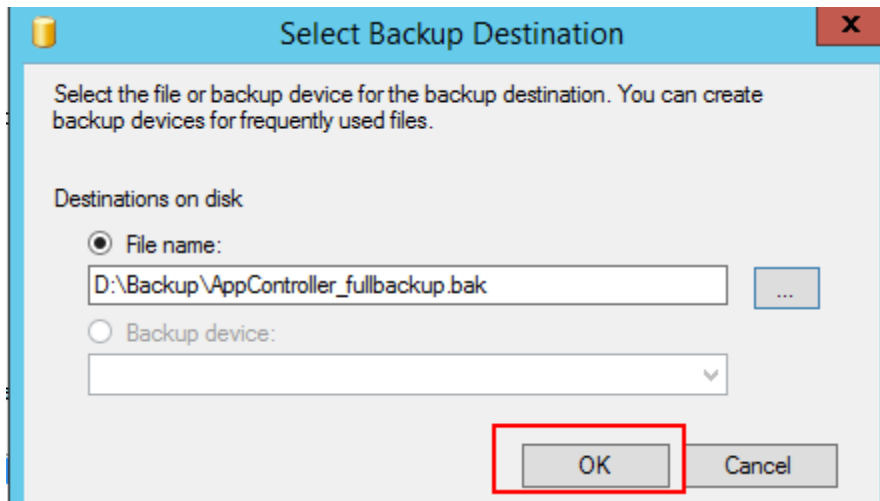
Chapter 6: Backup and Recovery

```
Import-Module AppController
$Credentials = Get-Credential
Get-SCACServer -ServerName 'https://appcontroller.contoso.internal' -Credential $Credentials
$Password = ConvertTo-SecureString "Password01" -AsPlainText -Force
Export-SCACAESKey -Path "C:\Media\Key.txt" -Password $Password
```










Backup

Share View

D:\Backup

Name	Date modified
 AppController_fullbackup.bak	30/12/2014 19:19