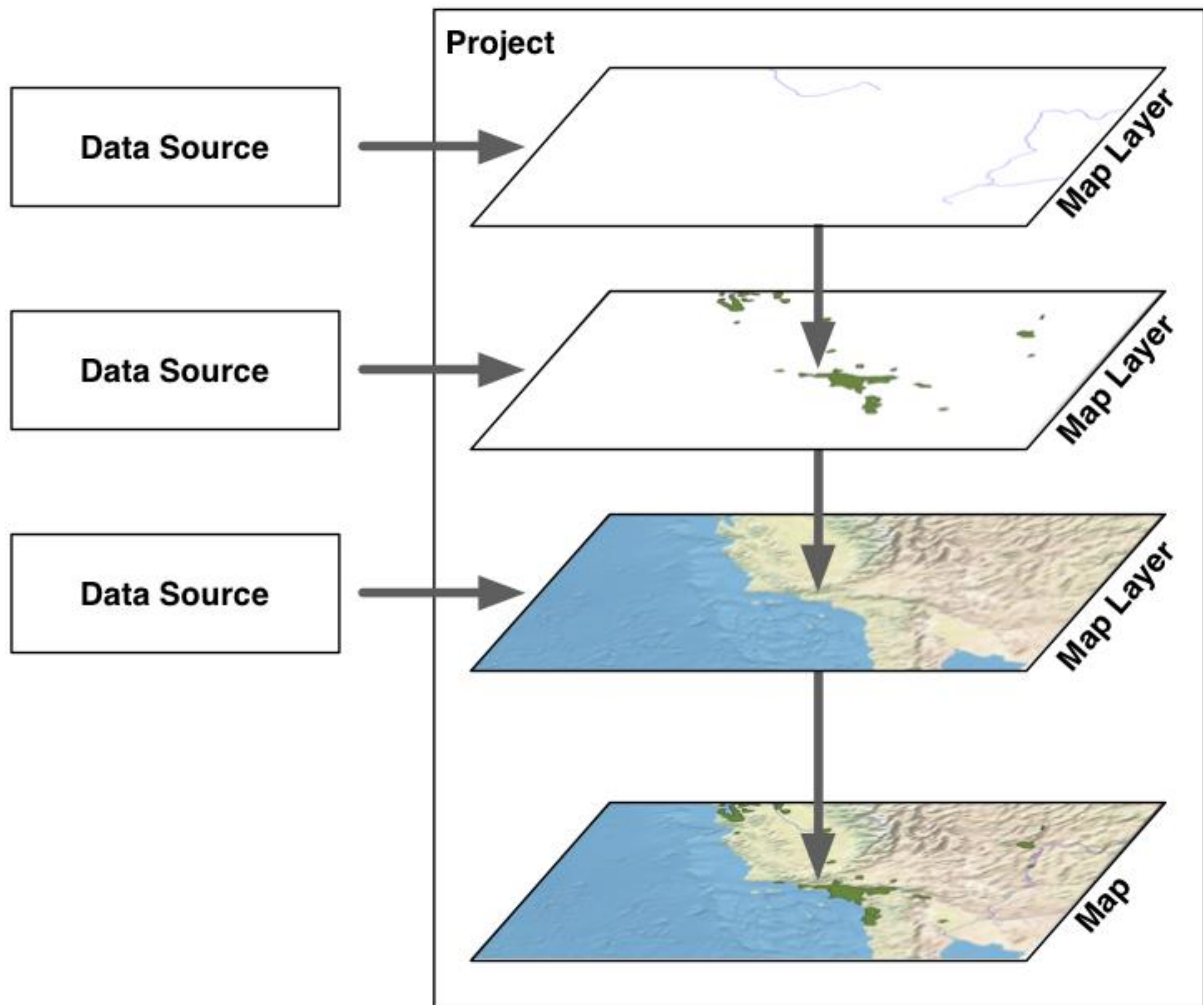
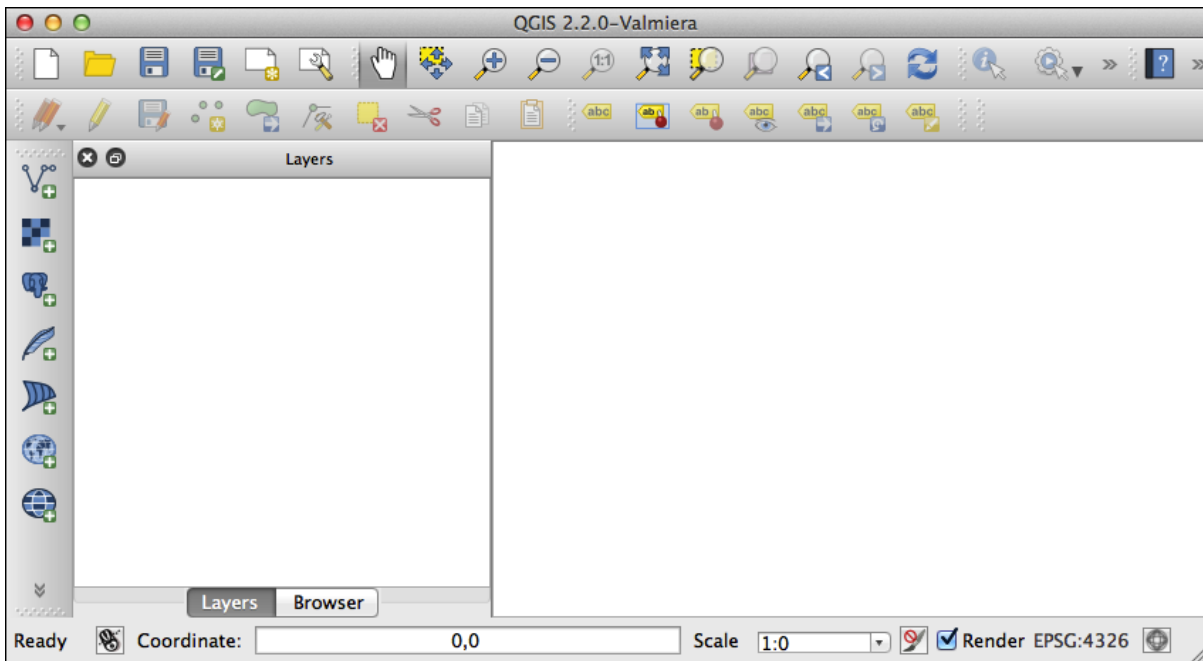
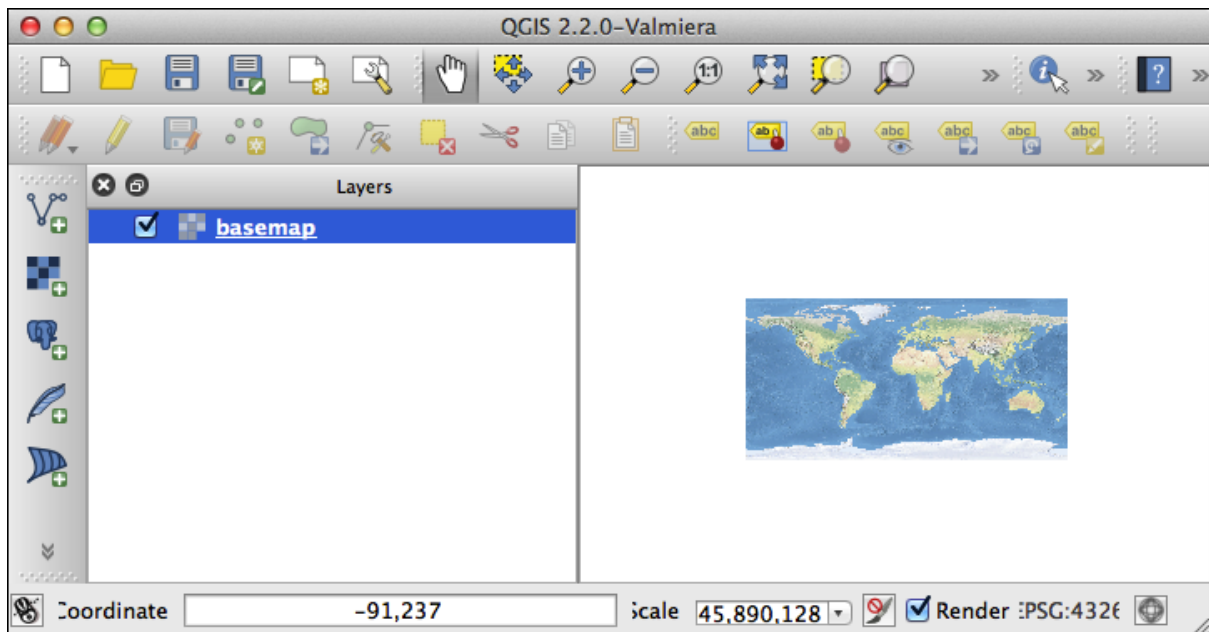
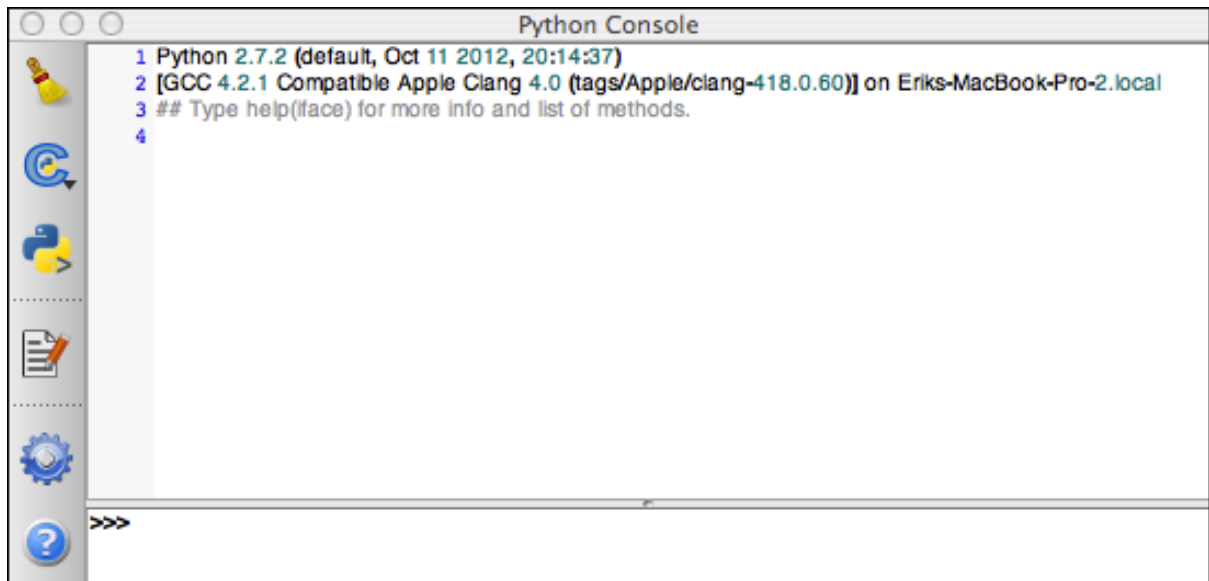
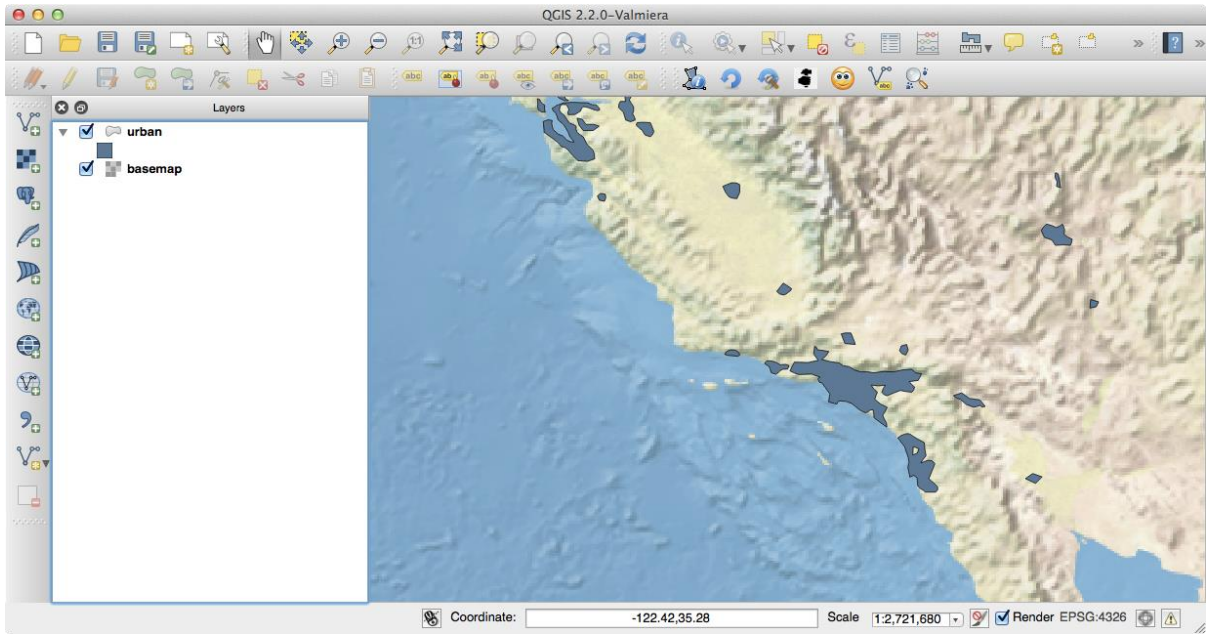


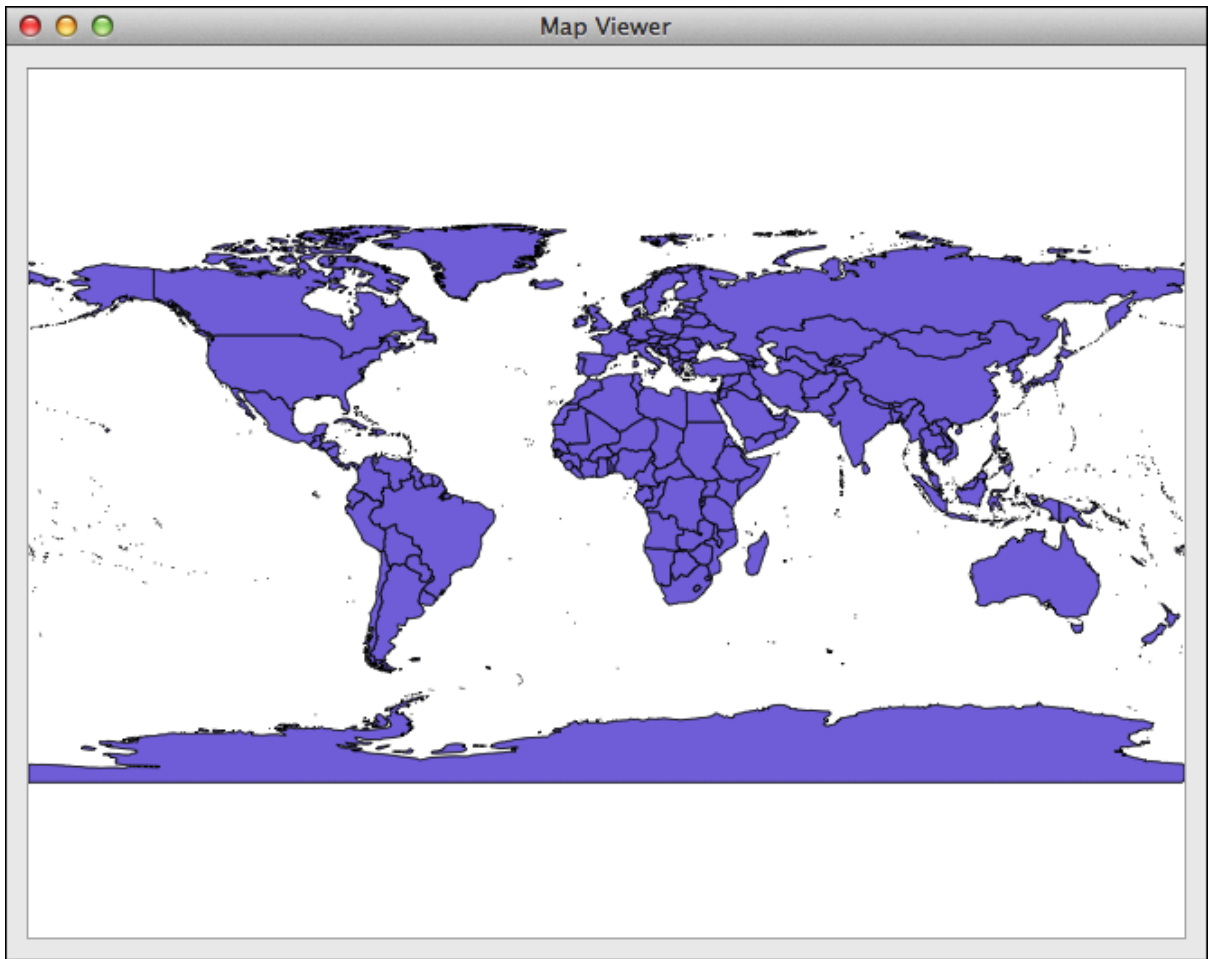
Chapter 1



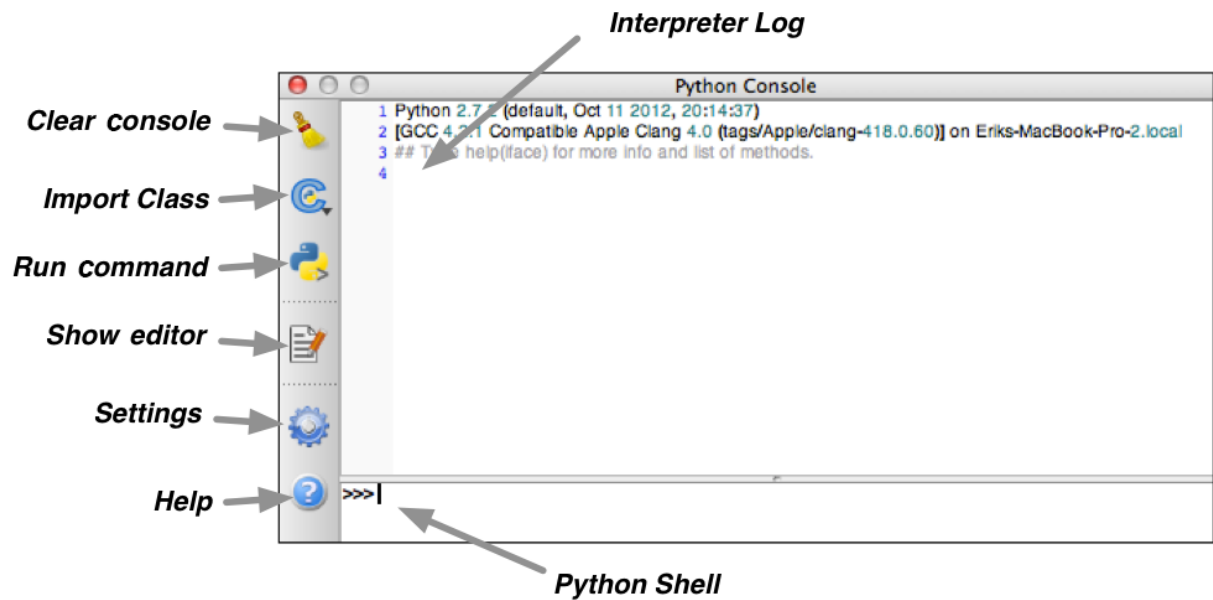


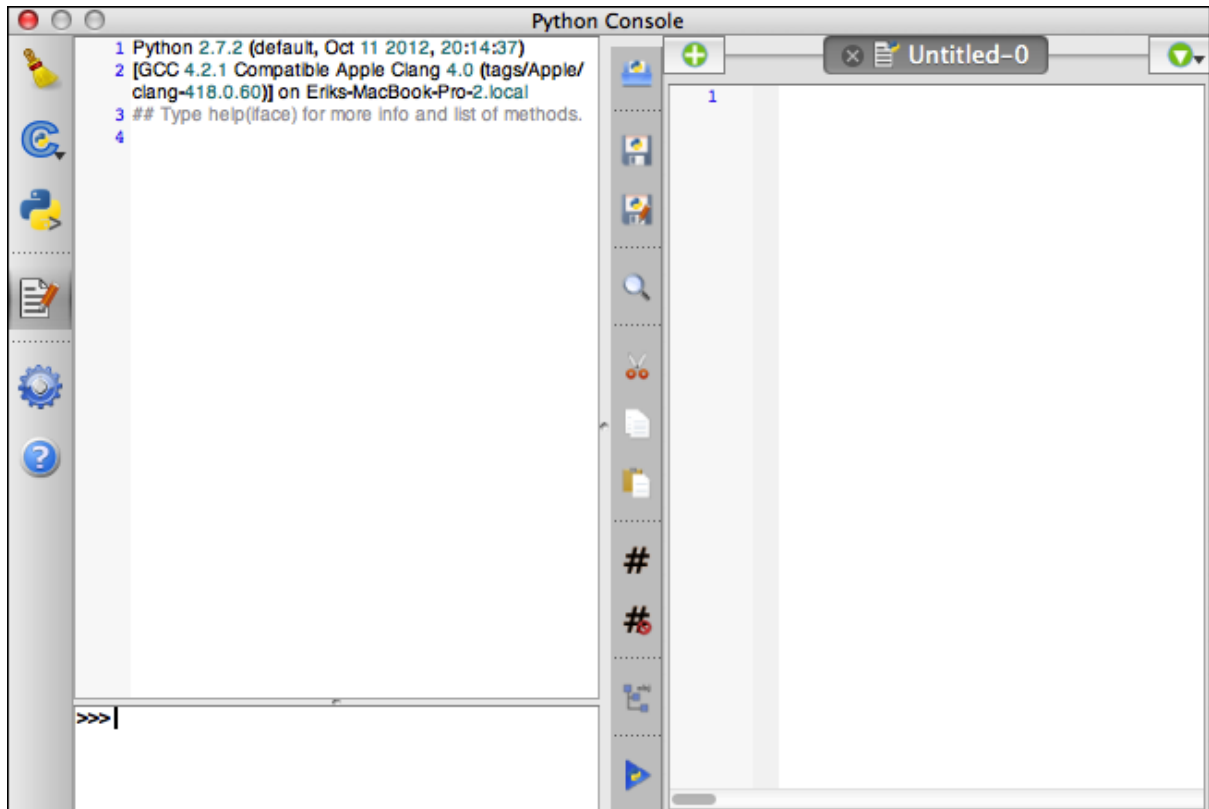
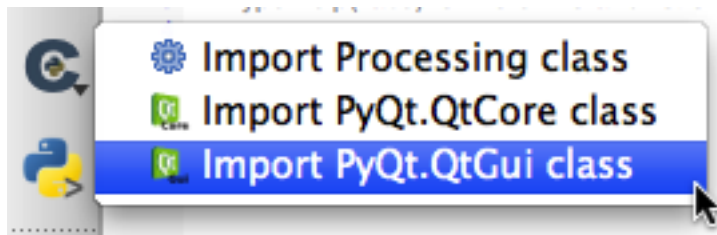


Name	Date Modified	Size	Kind
__init__.py	Today 6:54 AM	1 KB	Python Source File
COPYING	Today 6:54 AM	19 KB	Document
icon.png	Today 6:54 AM	1 KB	Portable Network Graphics image
Makefile	Today 6:54 AM	2 KB	Document
metadata.txt	Today 6:54 AM	516 bytes	Plain Text File
resources.py	Today 6:54 AM	6 KB	Python Source File
resources.qrc	Today 6:54 AM	107 bytes	Document
ui_zoomtopoint.py	Today 6:54 AM	5 KB	Python Source File
ui_zoomtopoint.ui	Today 6:54 AM	5 KB	Document
zoomtopoint.py	Today 6:54 AM	4 KB	Python Source File
zoomtopointdialog.py	Today 6:54 AM	1 KB	Python Source File
zoomtopointdialog.ui	Today 6:54 AM	5 KB	Document

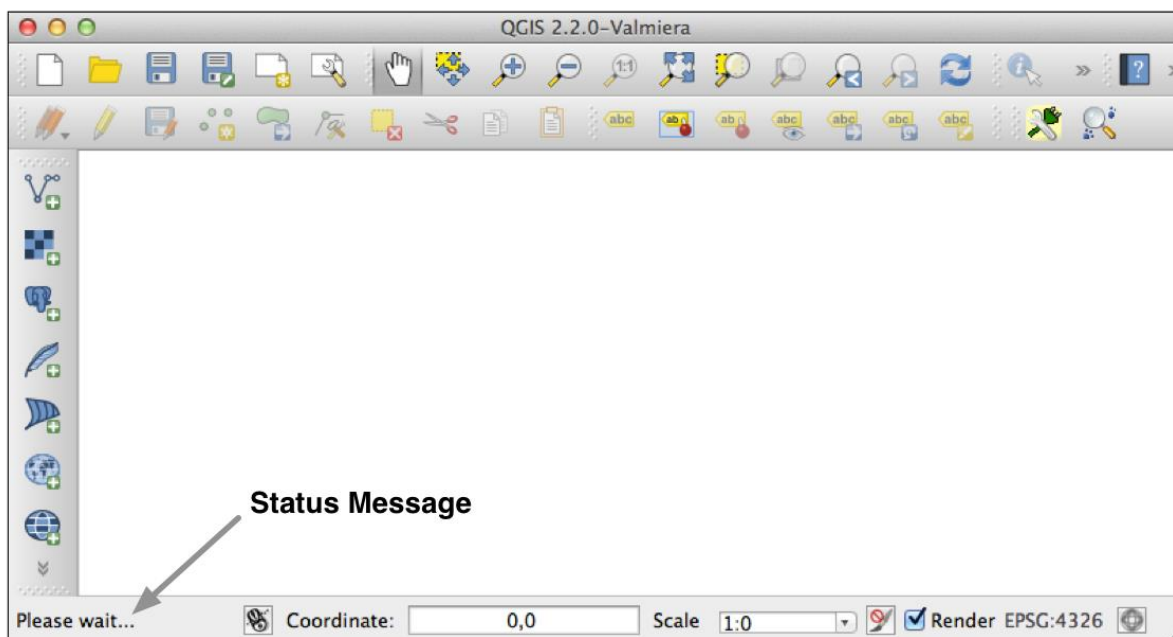
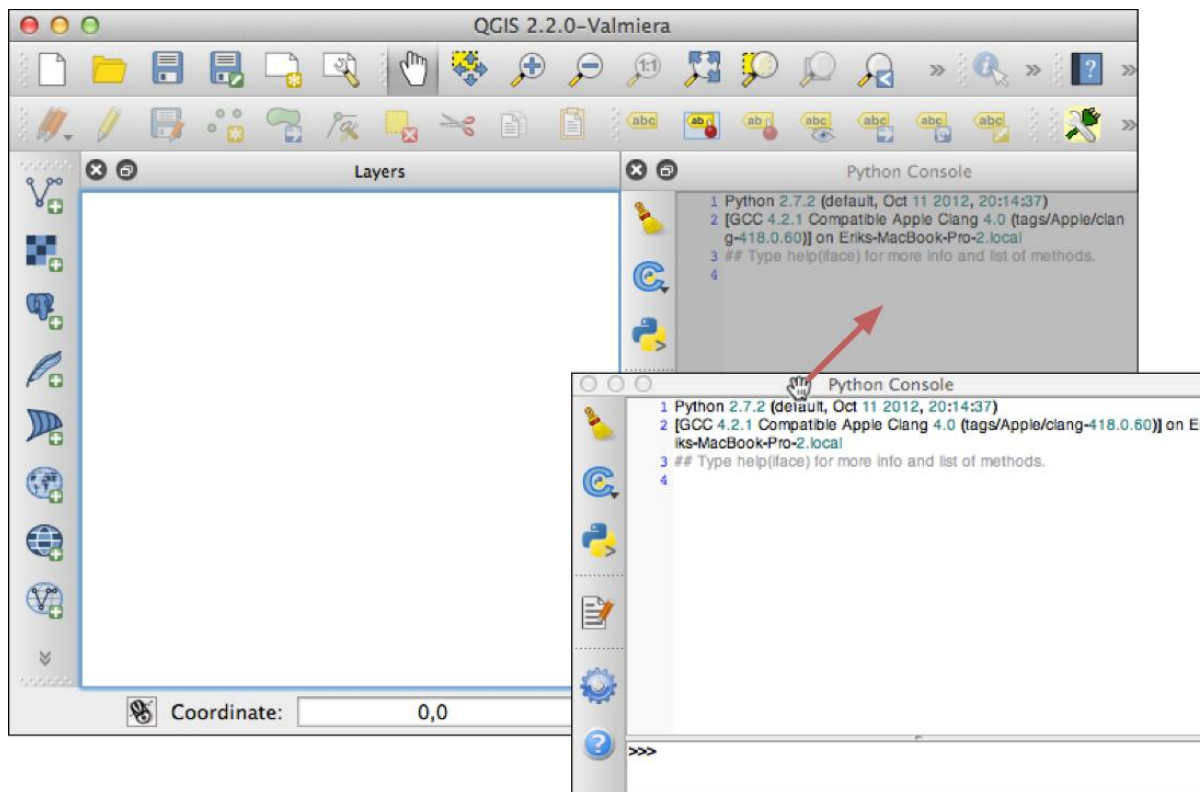


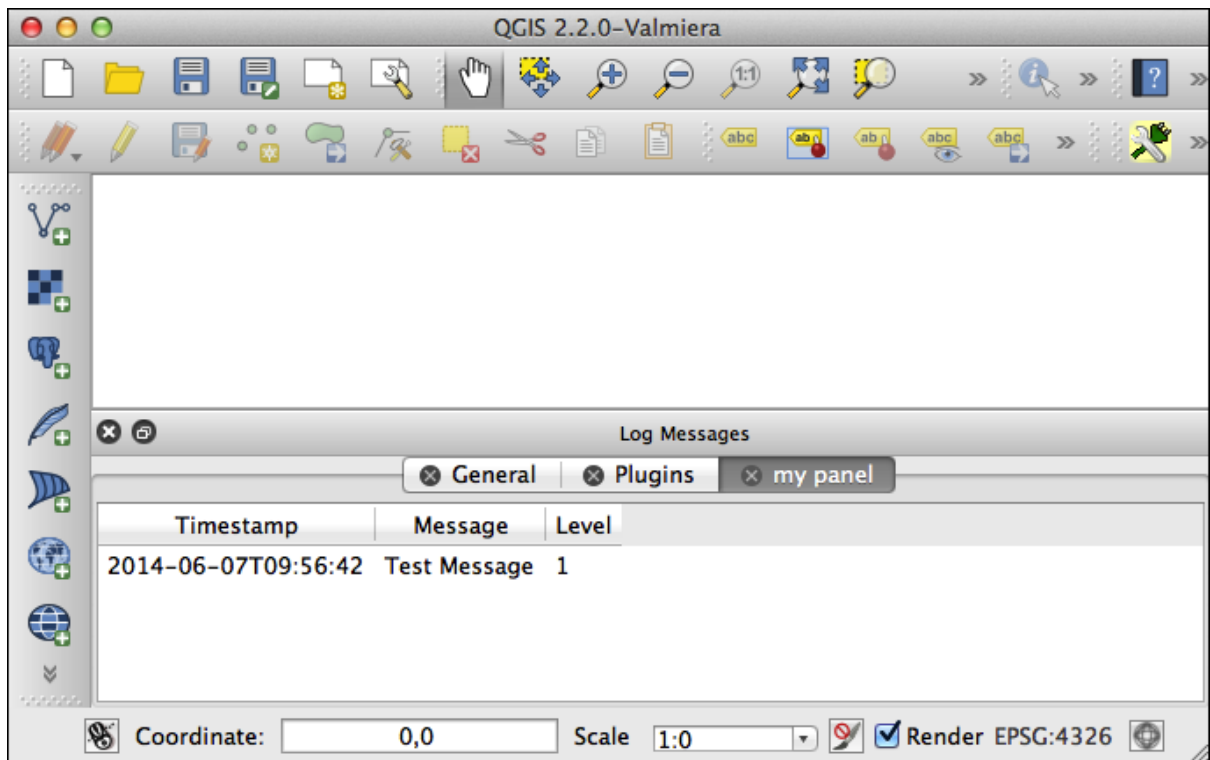
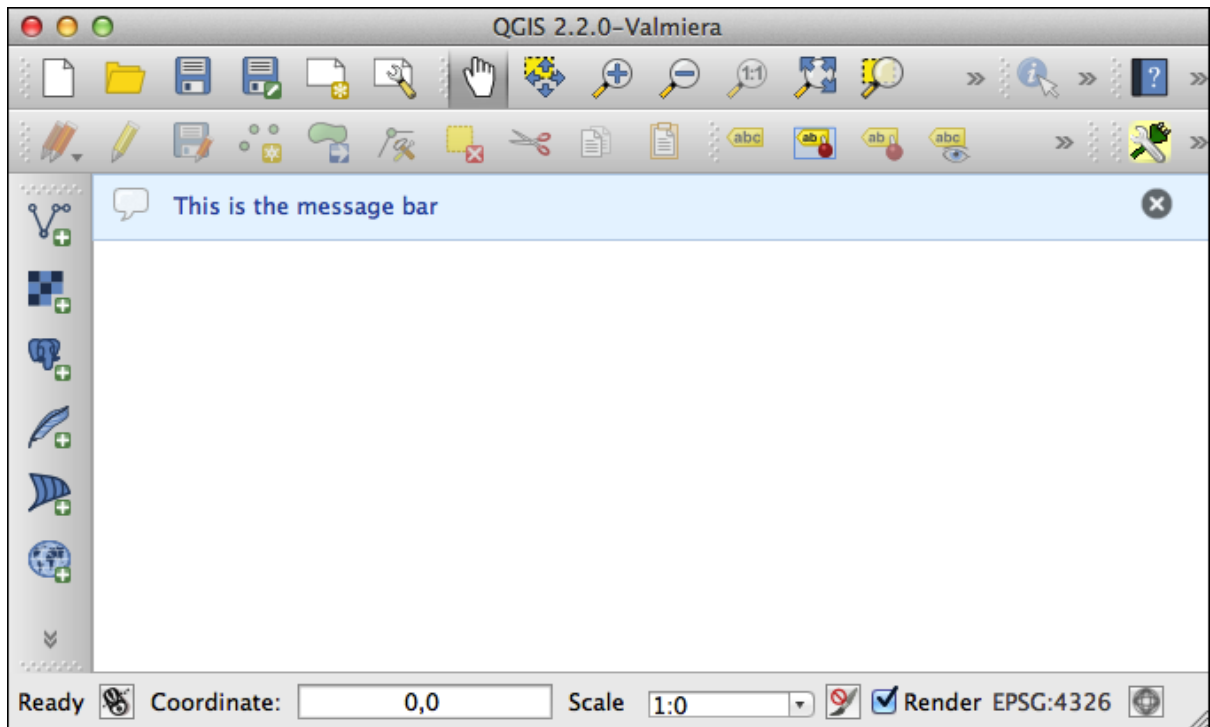
Chapter 2

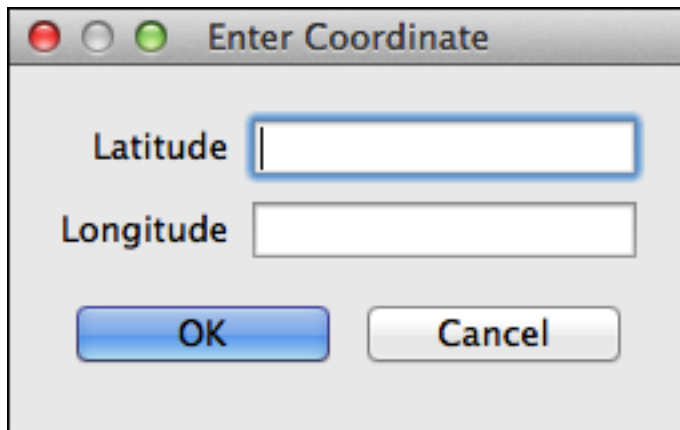




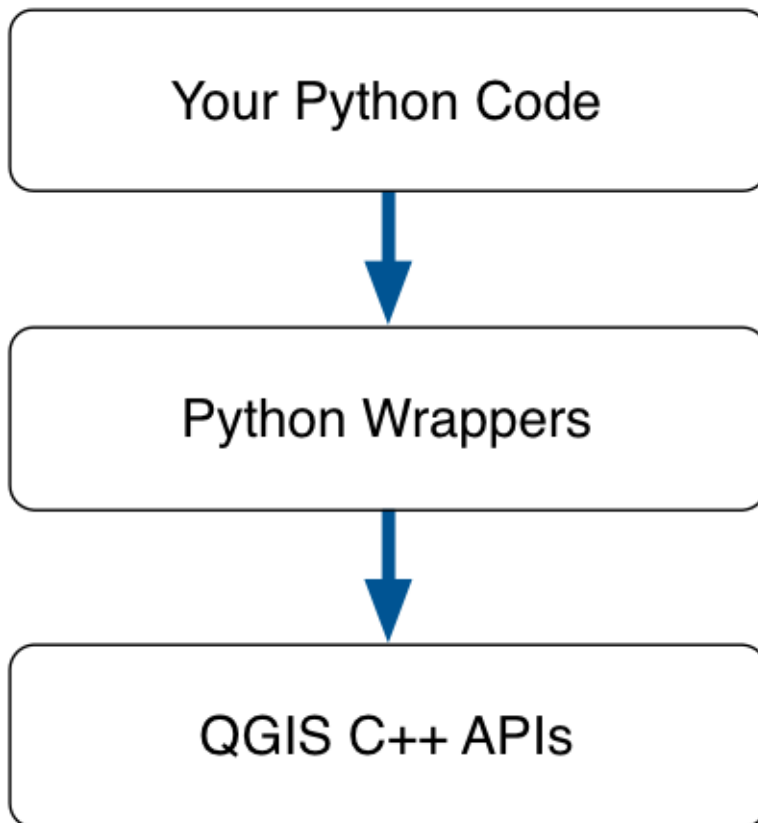








Chapter 3



```
virtual void QgsInterface::zoomToActiveLayer ( ) pure virtual slot
```

Zoom to extent of the active layer.

```
virtual QgsVectorLayer* QgsInterface::addVectorLayer ( QString vectorLayerPath,
                                                    QString baseName,
                                                    QString providerKey
                                                    )
```

pure virtual slot

Add a vector layer.

```
virtual void QgsInterface::newProject ( bool thePromptToSaveFlag = false )
```

pure virtual slot

Start a blank project.

```
QgsLabel::QgsLabel ( const QgsFields & fields )
```

Definition at line 47 of file `qgslabel.cpp`.

References `fields()`, `LabelFieldCount`, `mFields`, `mLabelAttributes`, and `mLabelFieldIdx`.

```
QgsRectangle::QgsRectangle ( double xmin = 0,
                             double ymin = 0,
                             double xmax = 0,
                             double ymax = 0
                             )
```

Constructor.

Definition at line 31 of file `qgsrectangle.cpp`.

References `normalize()`.

Referenced by `buffer()`, and `intersect()`.

```
QgsRectangle::QgsRectangle ( const QgsPoint & p1,
                             const QgsPoint & p2
                             )
```

Construct a rectangle from two points. The rectangle is normalized after construction.

Definition at line 37 of file `qgsrectangle.cpp`.

QgsRectangle::QgsRectangle (const QRectF & qRectF)

Construct a rectangle from a QRectF.

The rectangle is normalized after construction.

Note

added in 2.0

Definition at line 42 of file `qgsrectangle.cpp`.

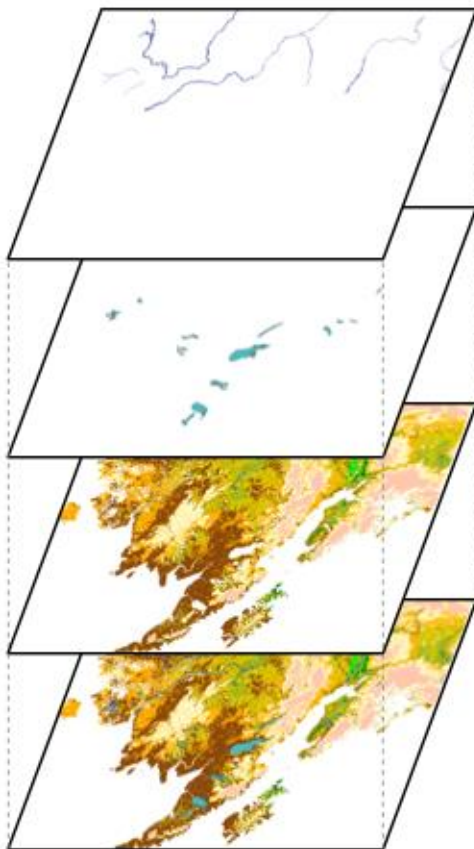
References `xmax`, `xmin`, `ymax`, and `ymin`.

QgsRectangle::QgsRectangle (const QgsRectangle & other)

Copy constructor.

Definition at line 50 of file `qgsrectangle.cpp`.

References `xmax`, `xMaximum()`, `xmin`, `xMinimum()`, `ymax`, `yMaximum()`, `ymin`, and `yMinimum()`.



rivers layer

+

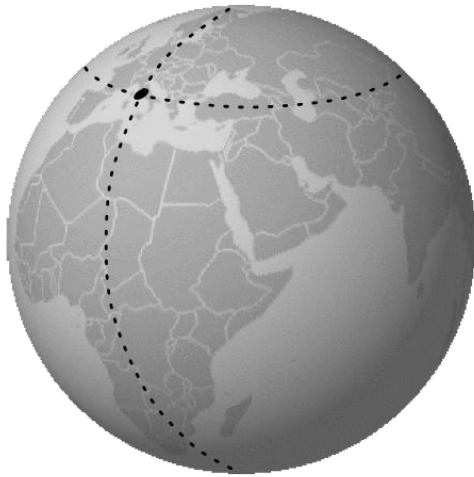
lakes layer

+

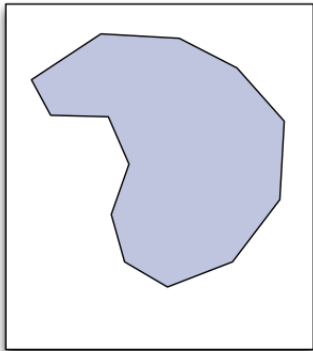
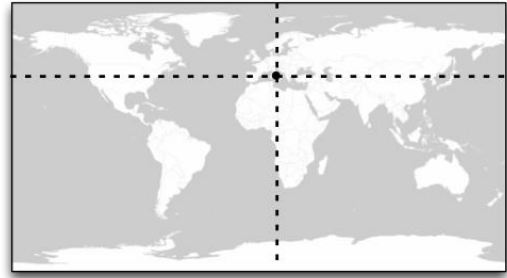
basemap layer

=

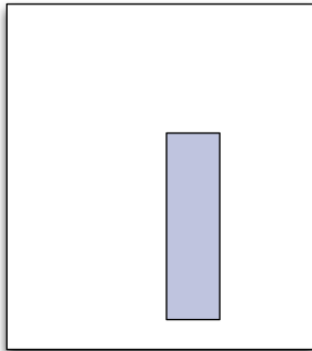
generated map



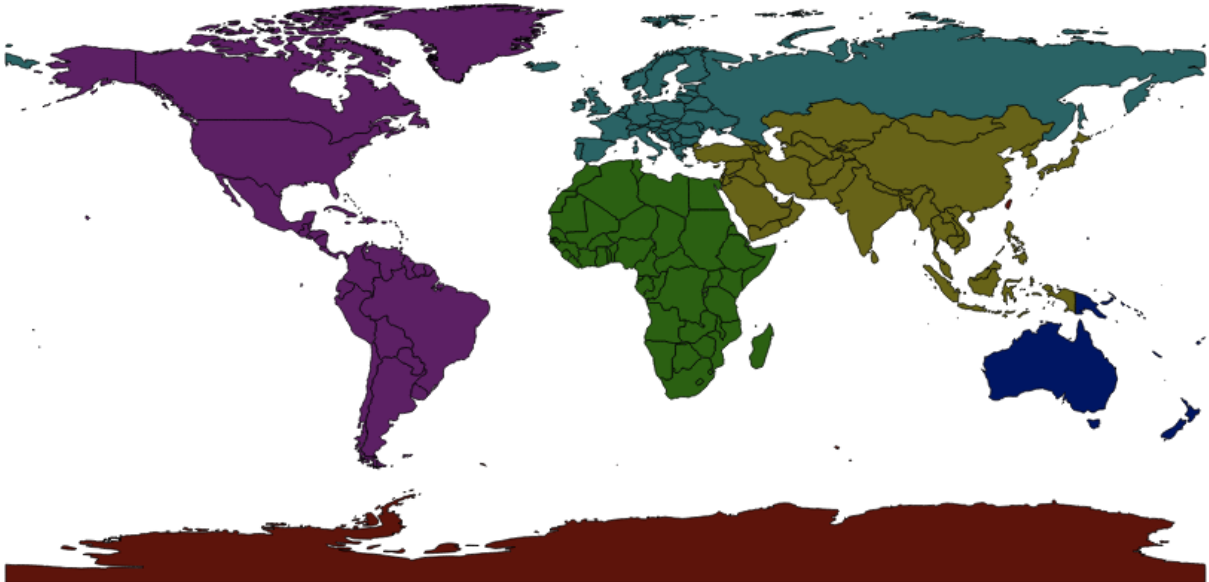
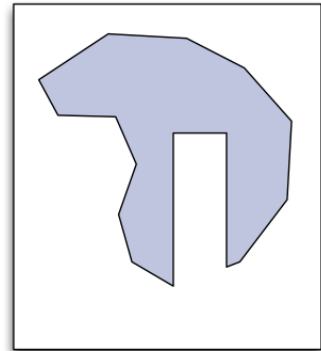
CRS

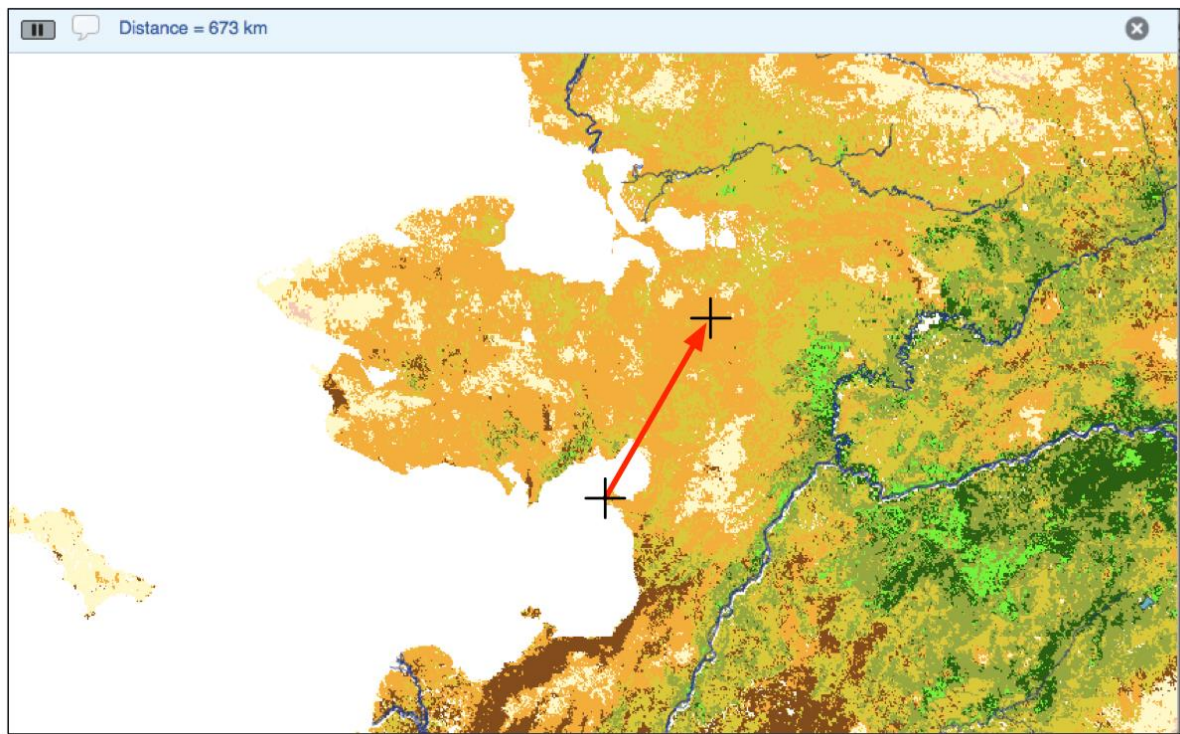
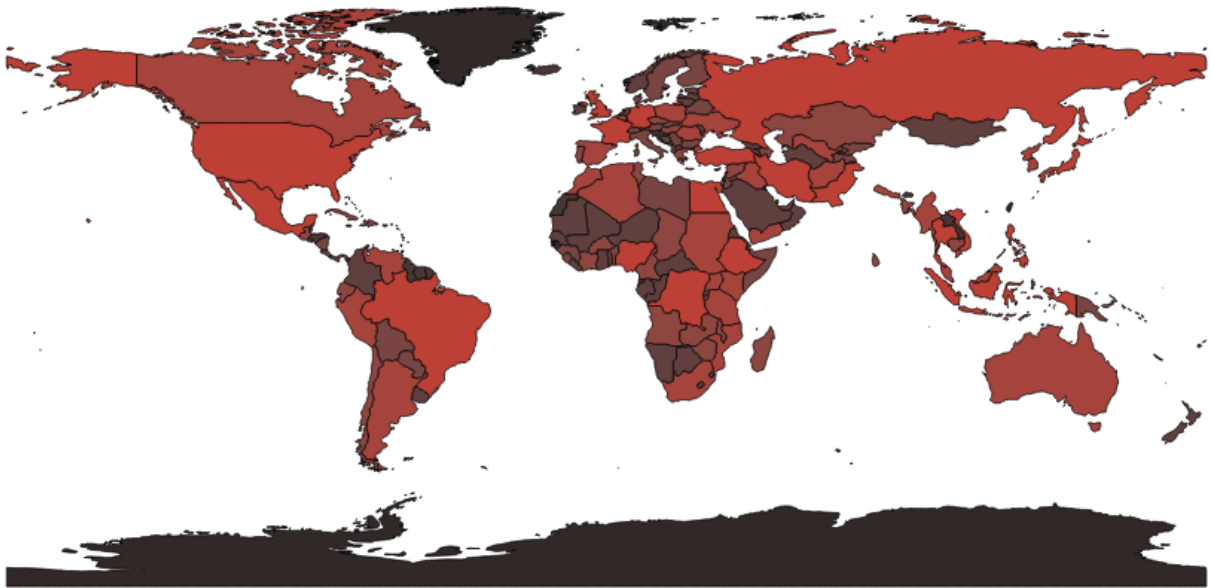


-



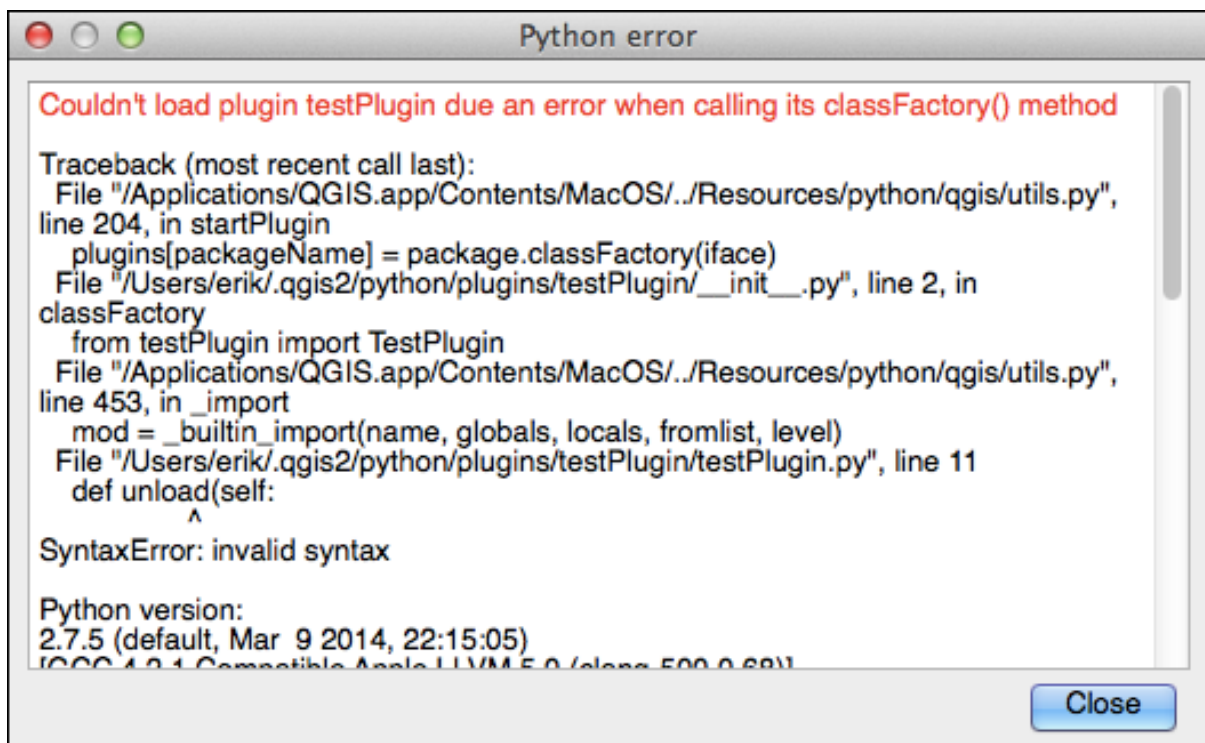
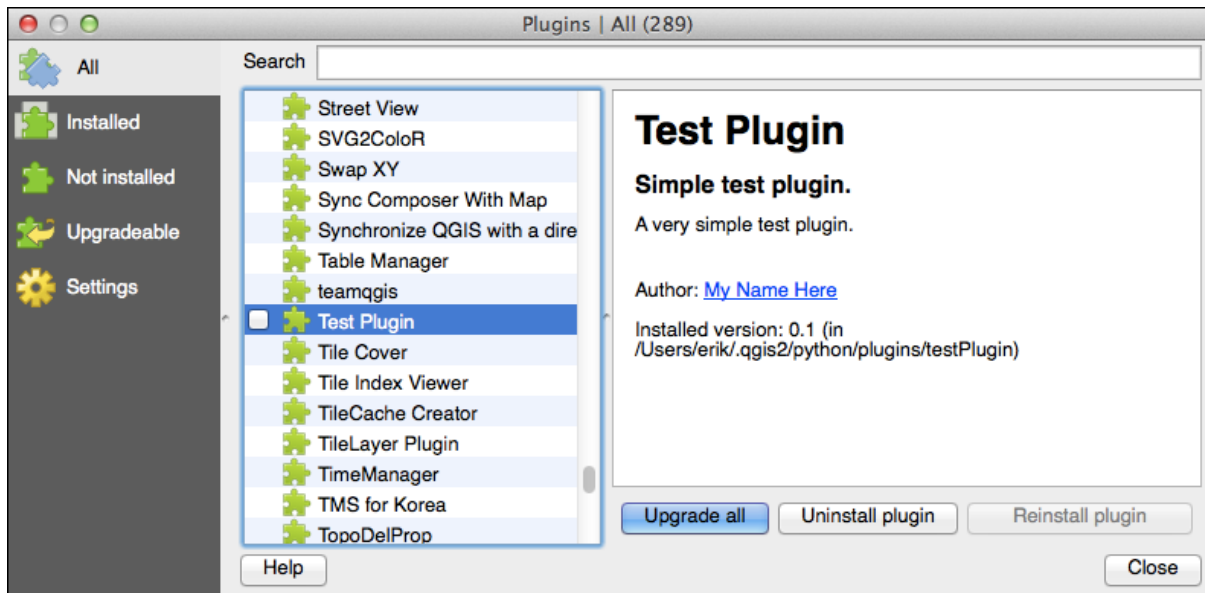
=





Chapter 4





Log Messages		
General		
Timestamp	Message	Level
2014-08-08T06:19:36	Loaded Plugin Reloader (package: plugin_reloader)	0
2014-08-08T06:19:36	Error when reading metadata of plugin testPlugin	1
2014-08-08T06:19:36	Loaded Zoom to Point (package: zoomtopoint)	0
2014-08-08T06:19:36	Loaded DB Manager (package: db_manager)	0
2014-08-08T06:19:36	Loaded fTools (package: fTools)	0
2014-08-08T06:19:37	Loaded GdalTools (package: GdalTools)	0
2014-08-08T06:19:37	Loaded Processing (package: processing)	0

QGIS Plugin Builder

QGIS Plugin Builder

Class name

Plugin name

Description

Module name

Version number

Minimum QGIS version

Text for the menu item

Author/Company

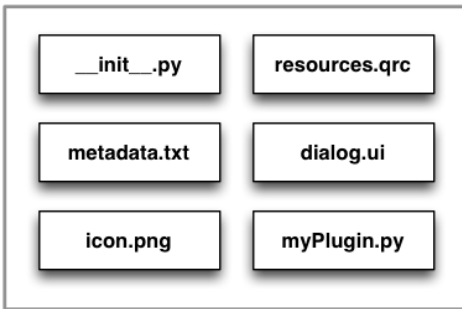
Email address

Optional Items

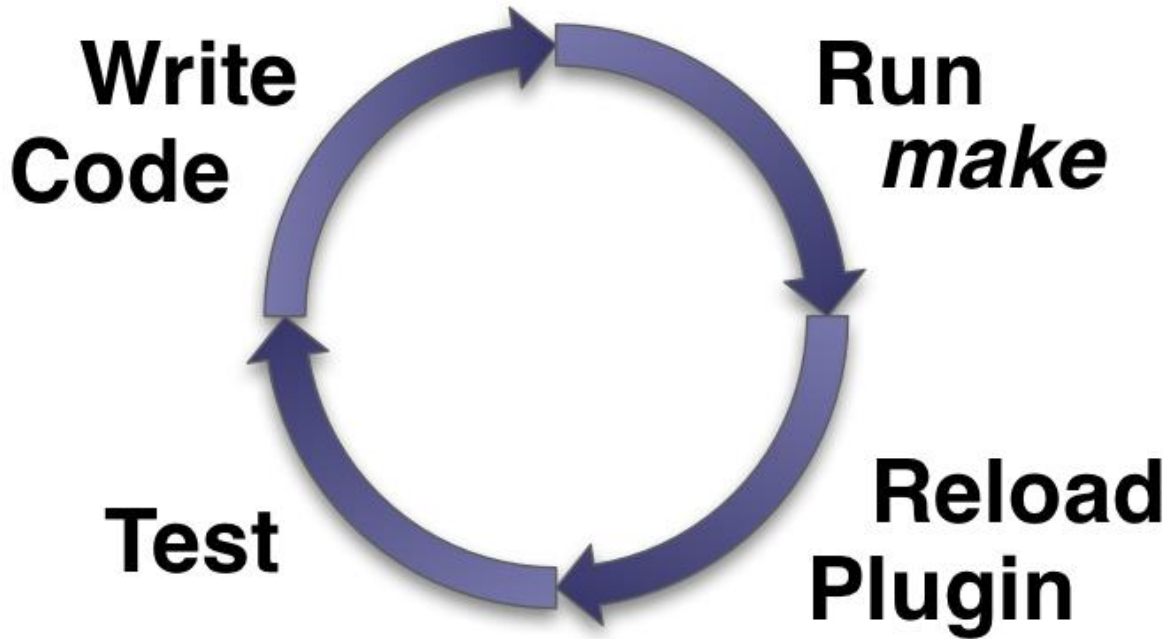
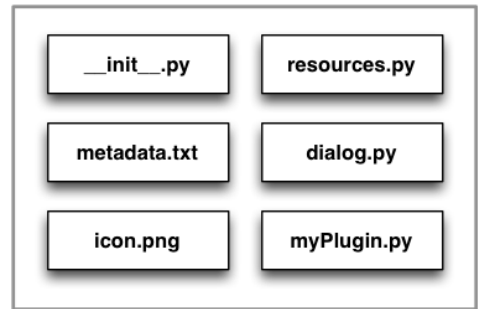
Bug tracker

Help Cancel OK

src/myPlugin



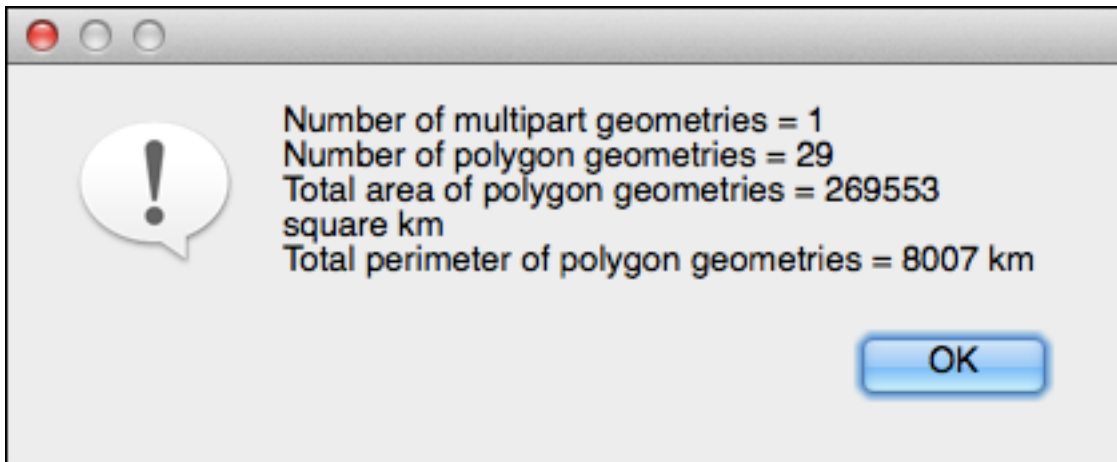
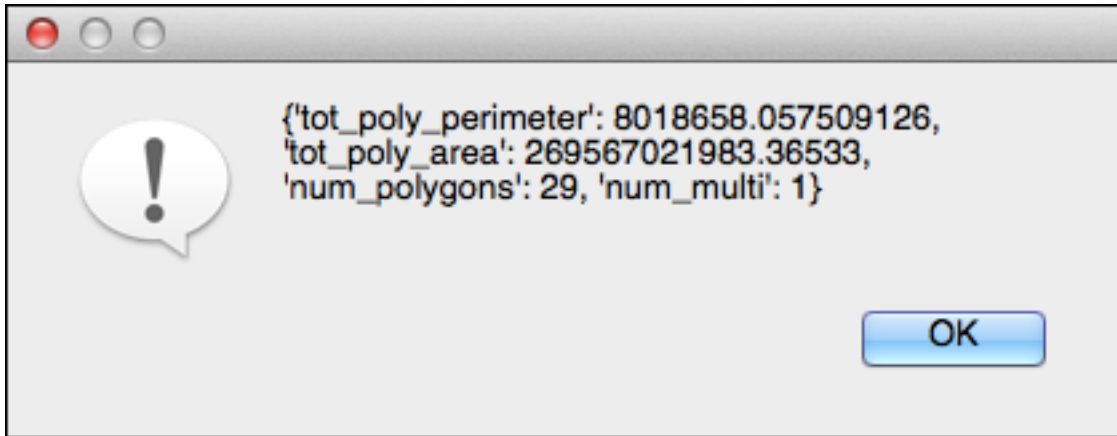
~/ .qgis2/python/plugins/myPlugin



A screenshot of a 'Repository details' dialog box. It has a title bar with standard window controls. The dialog contains the following fields and controls:

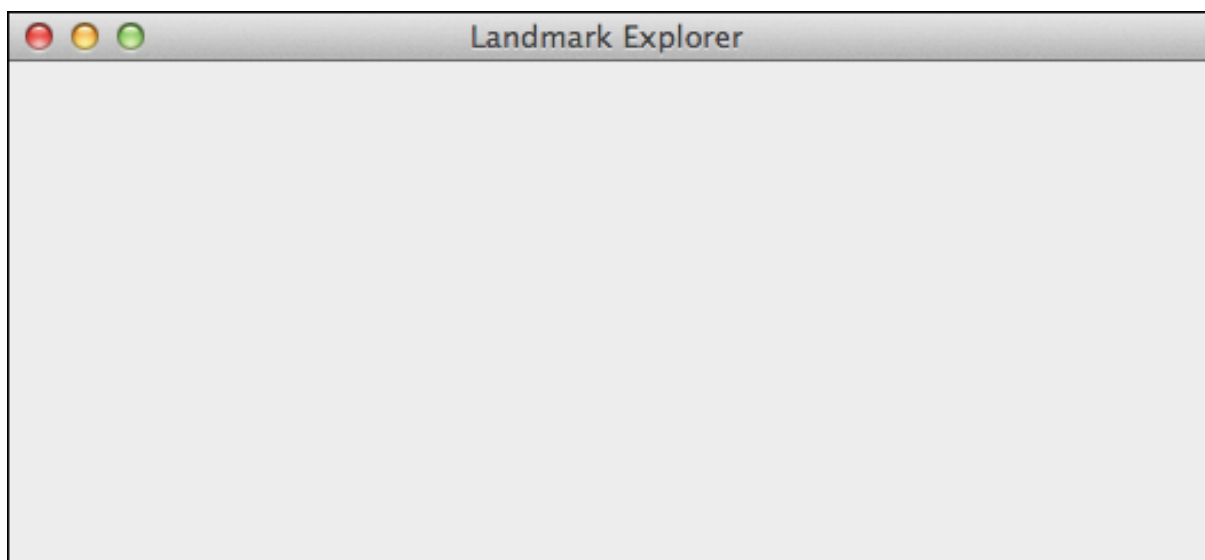
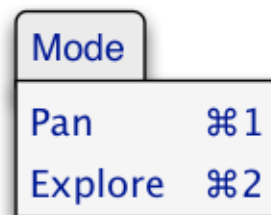
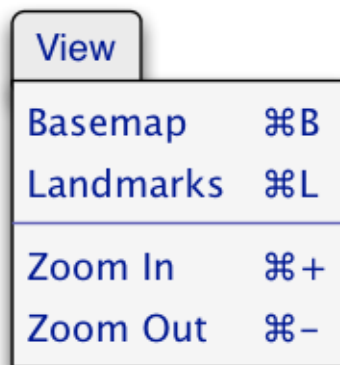
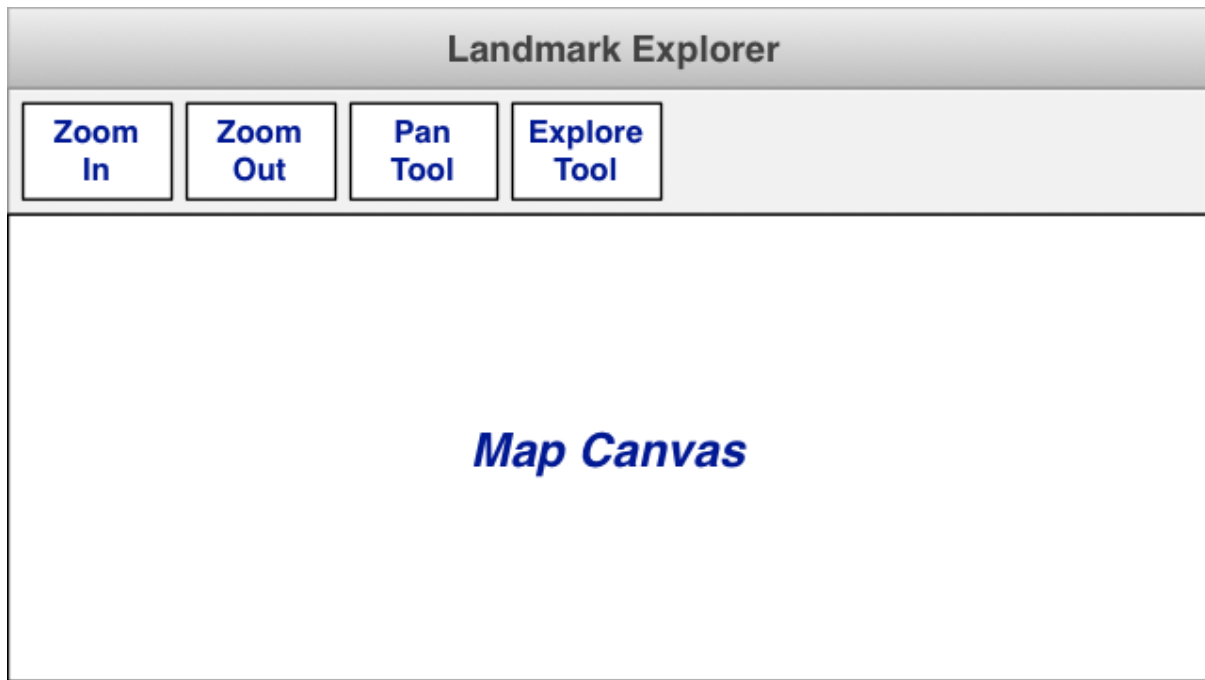
- Name:** An empty text input field.
- URL:** A text input field containing `http://`.
- Parameters:** A text input field containing `?qgis=2.2`.
- Enabled:** A checkbox that is checked.
- Buttons:** 'Cancel' and 'OK' buttons at the bottom right.

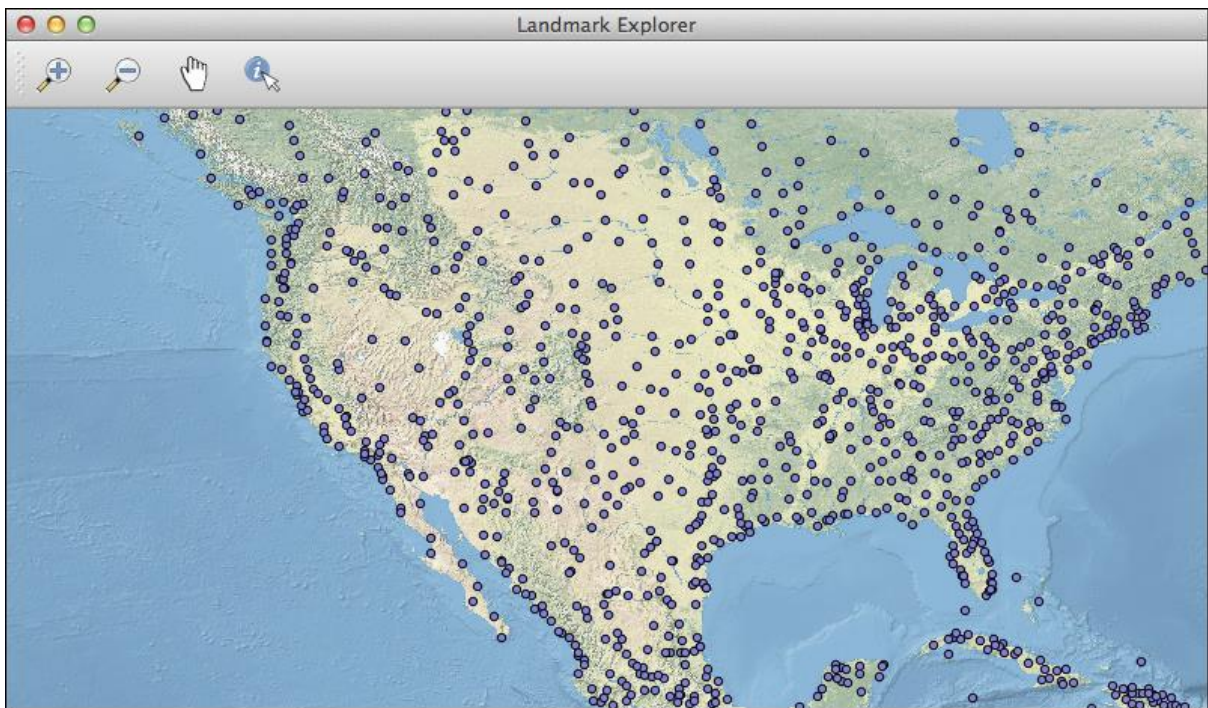
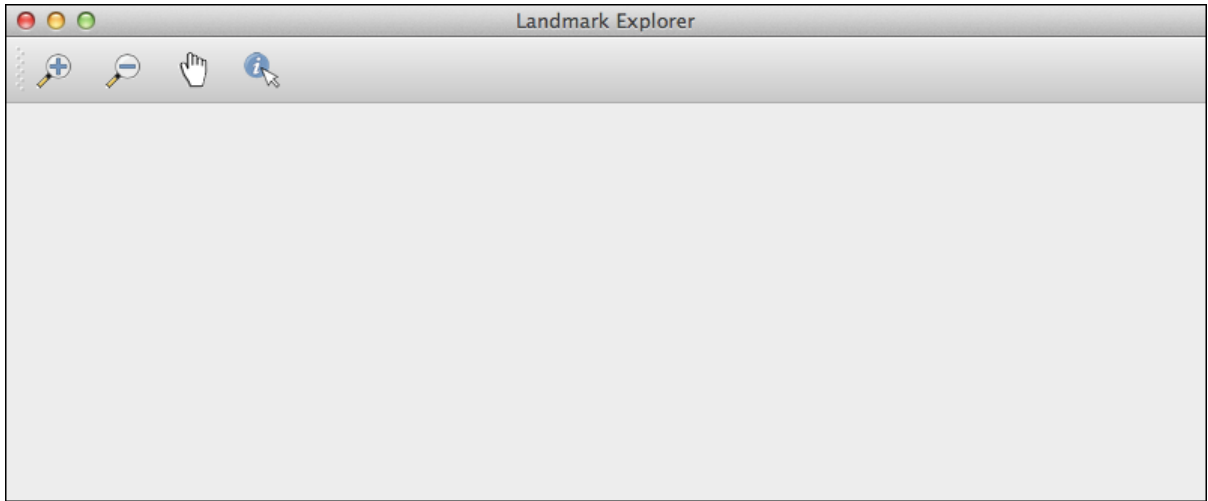


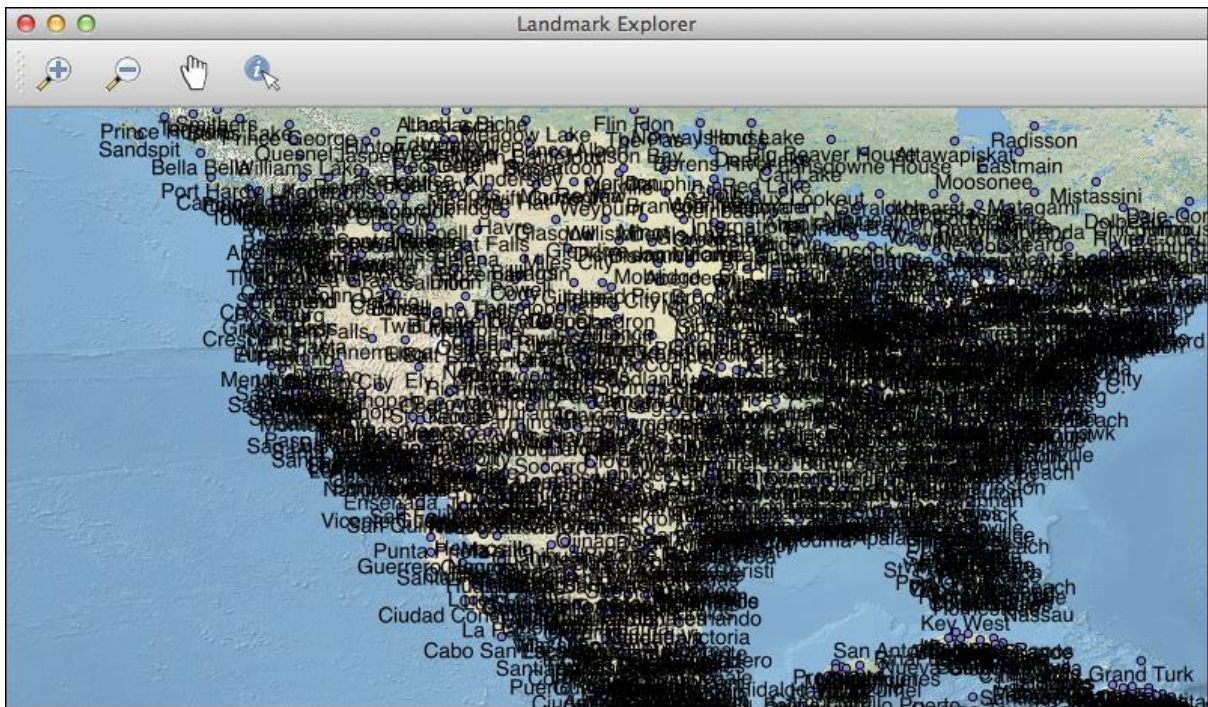


Chapter 5



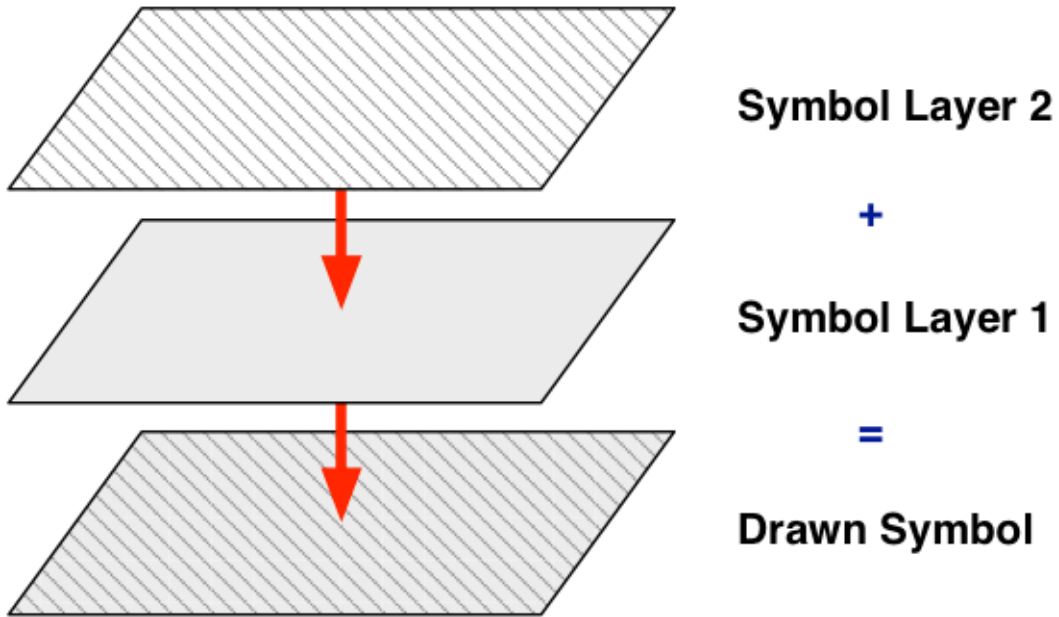


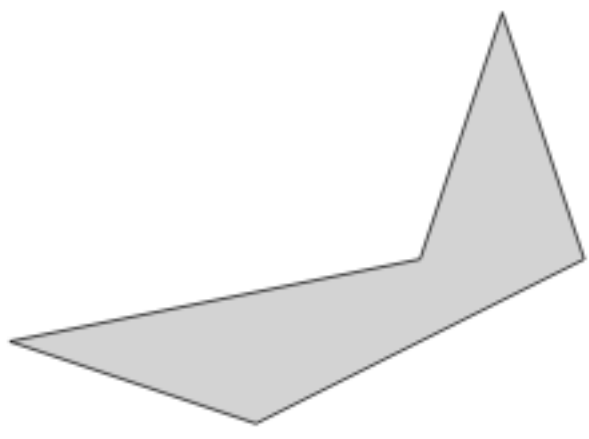


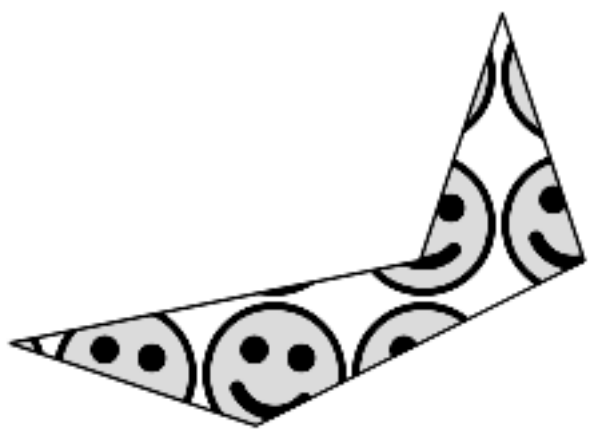
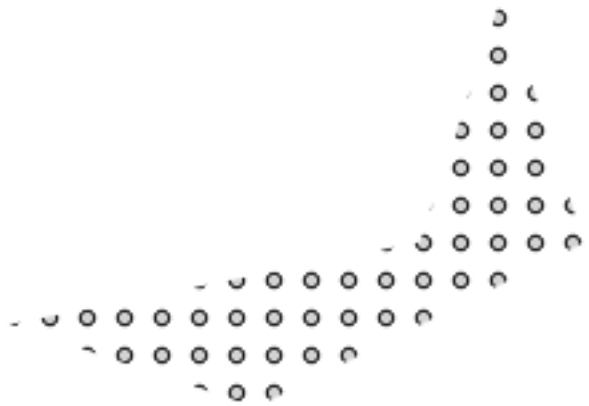




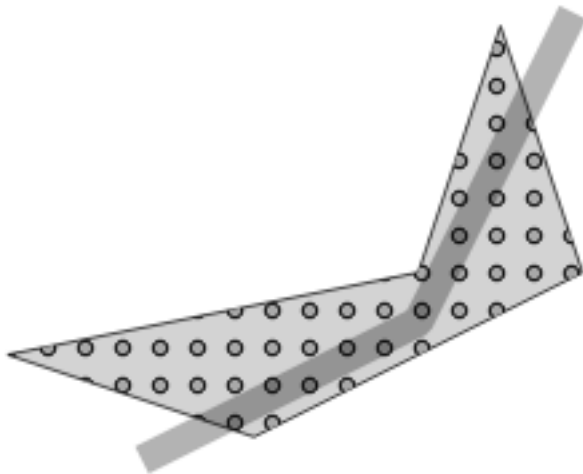
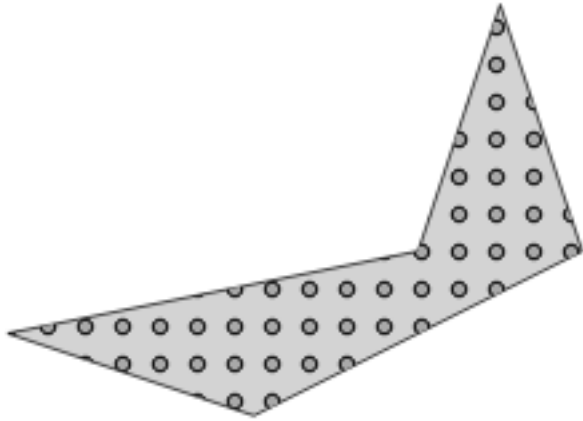
Chapter 6





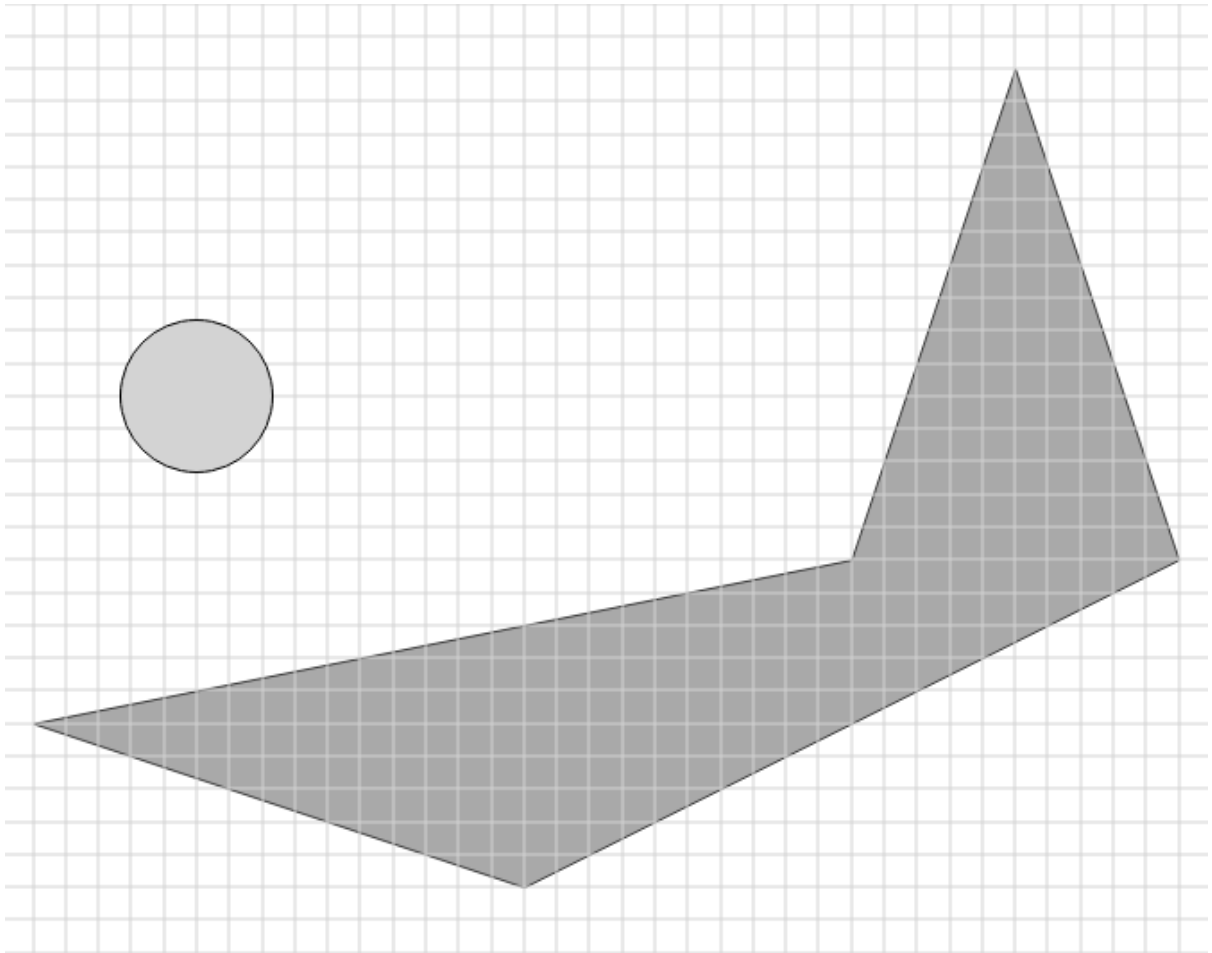


$$\text{---} + \text{—} + \text{- - -} = \text{— — —}$$



×

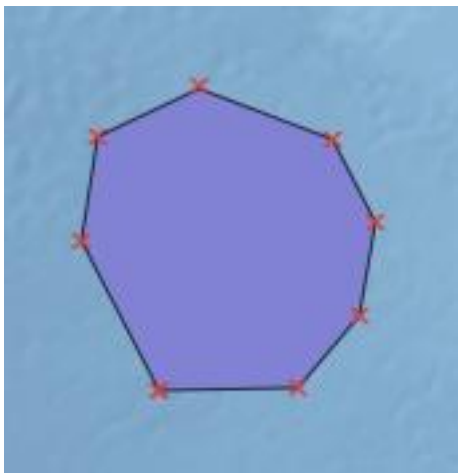
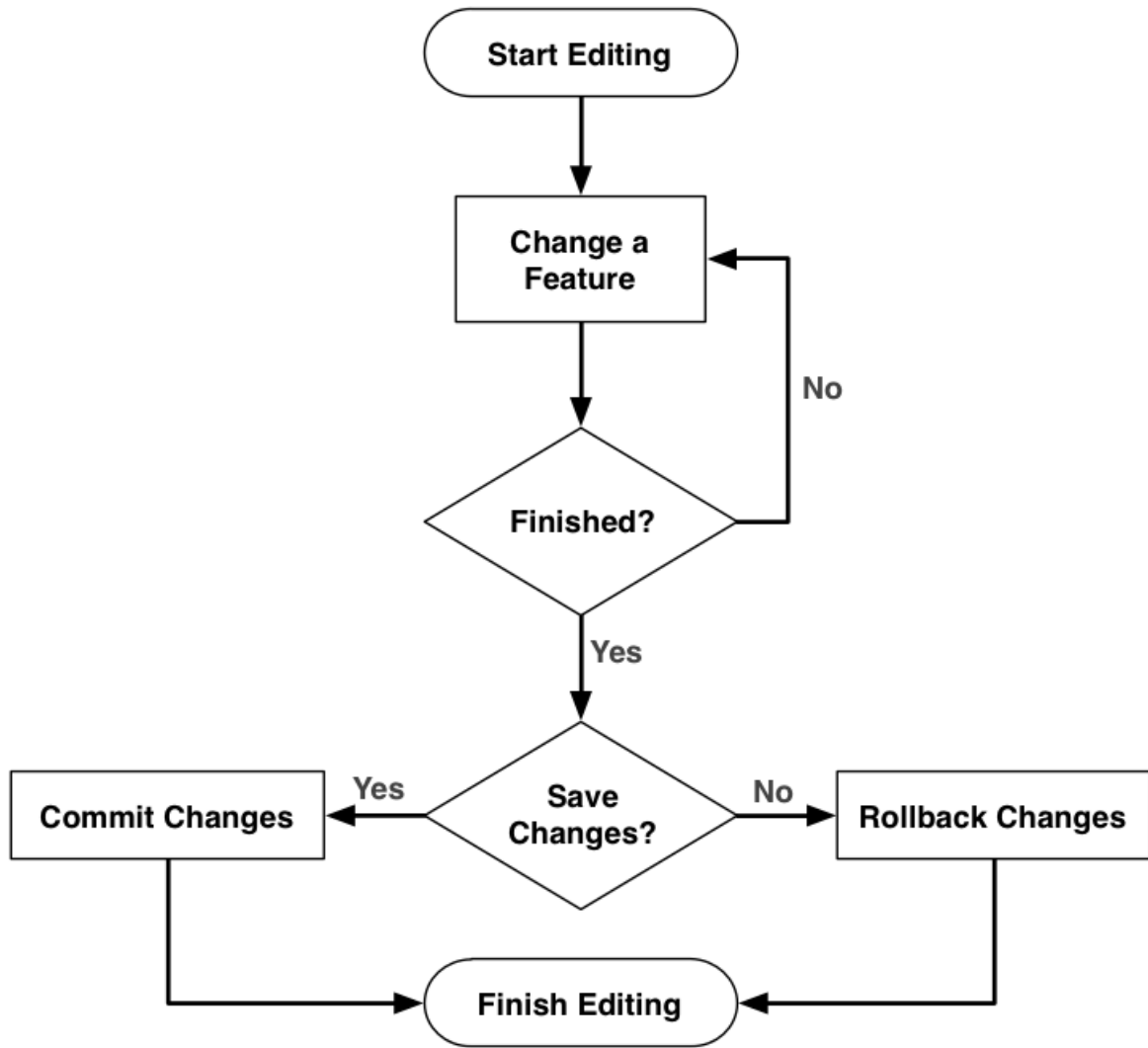


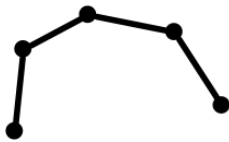
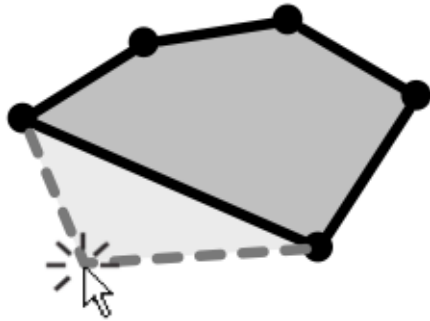




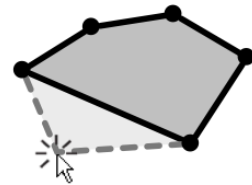
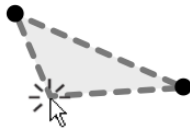
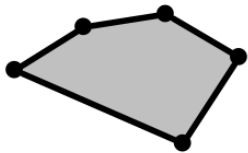


Chapter 7

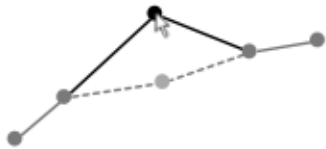




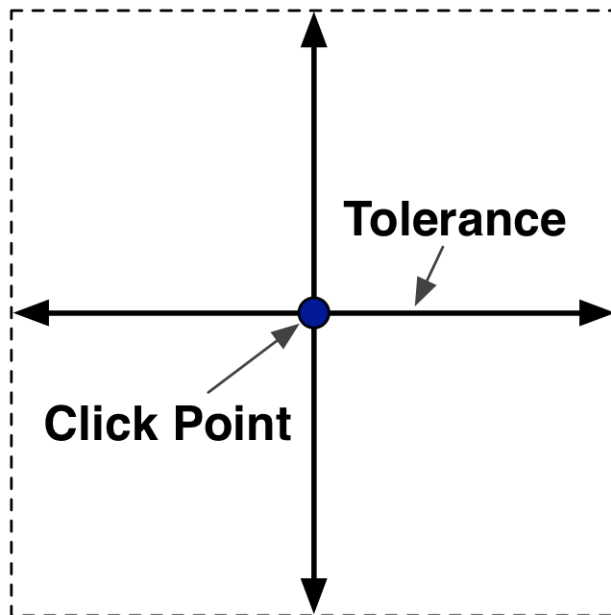
Main Rubber Band + Temporary Rubber Band = Visual Effect



Main Rubber Band + Temporary Rubber Band = Visual Effect



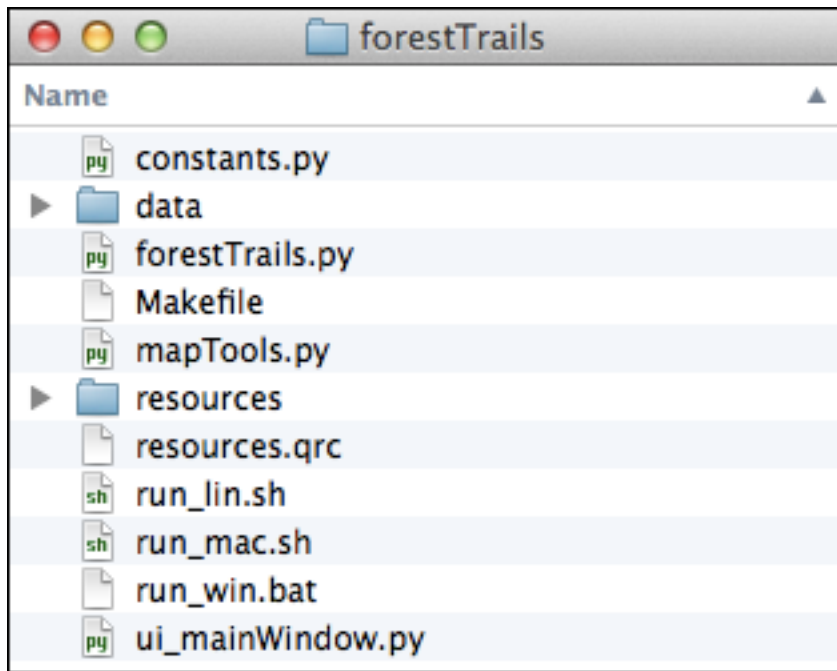
Search Rectangle



Chapter 8



track layer
+
basemap layer



mActionZoomIn.png



mActionZoomOut.png



mActionPan.png



mActionEdit.svg



mActionAddTrack.svg



mActionEditTrack.svg



mActionDeleteTrack.svg



mActionGetInfo.svg



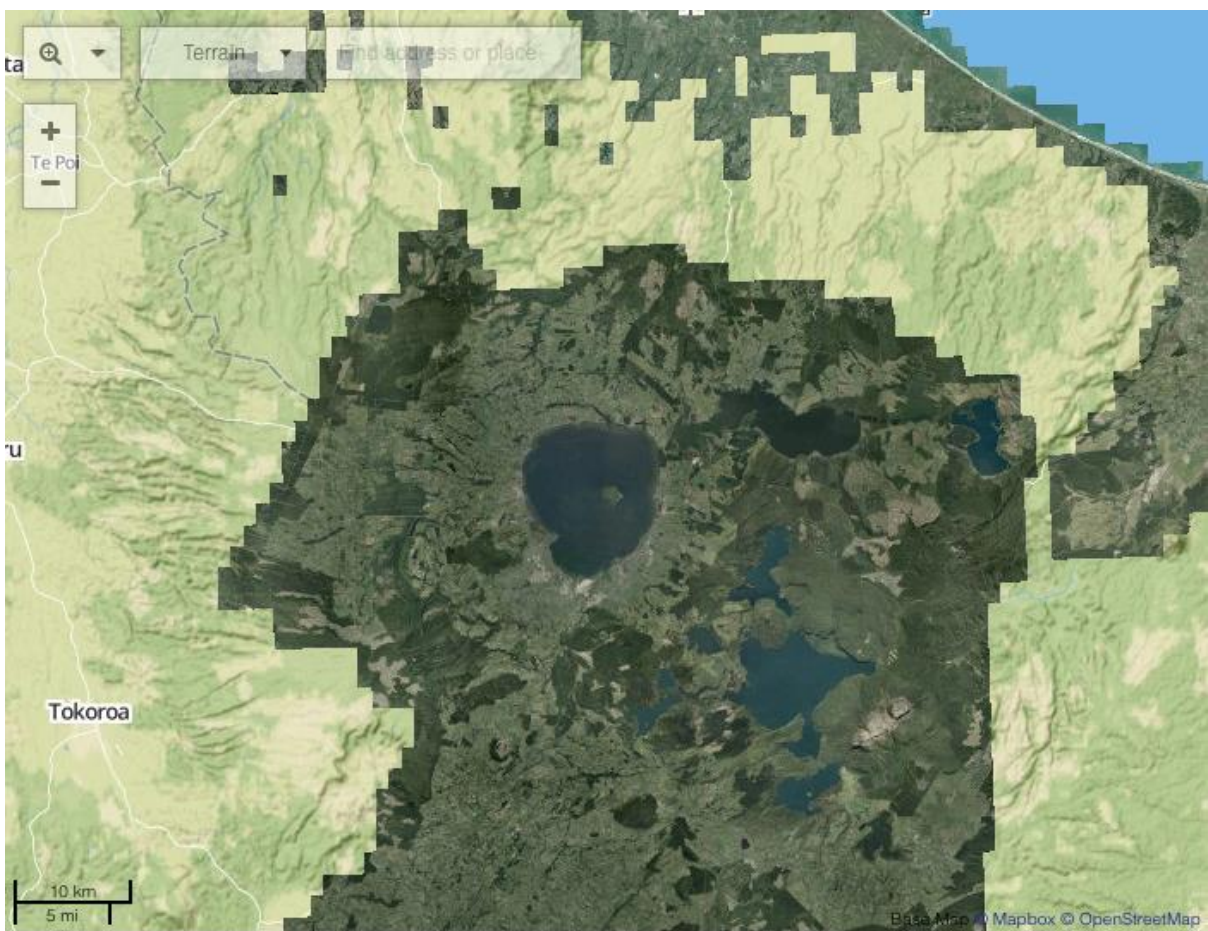
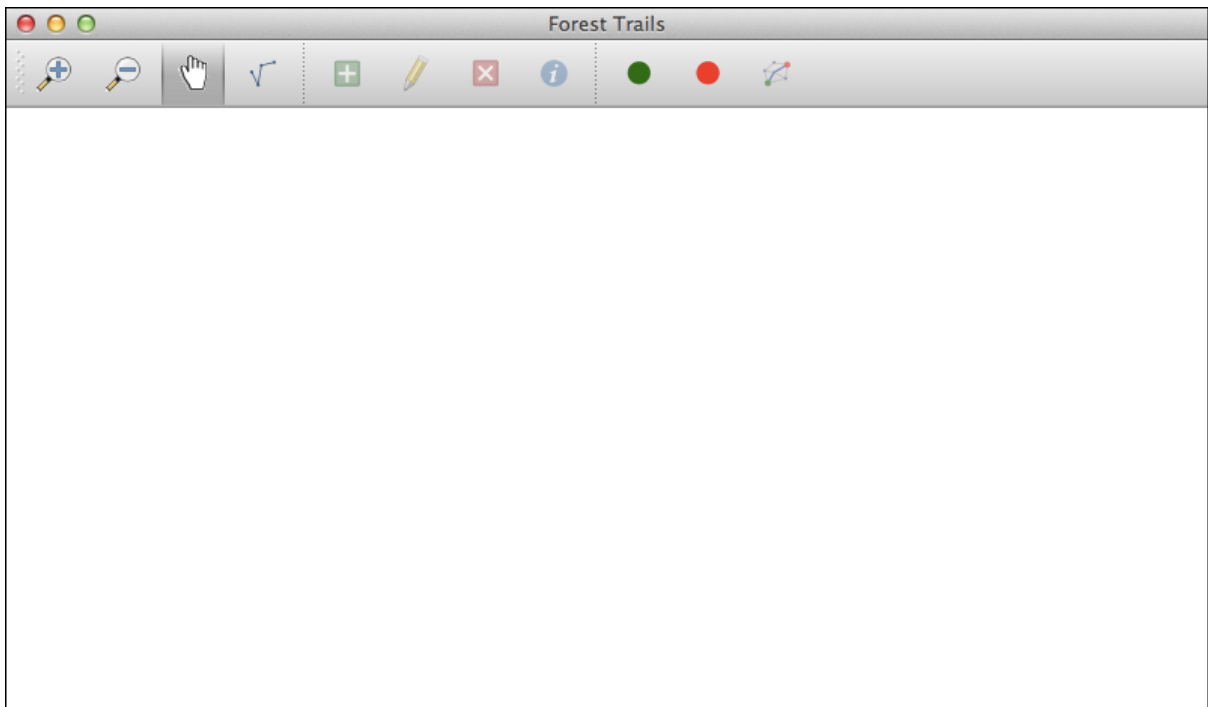
mActionSetStartPoint.svg

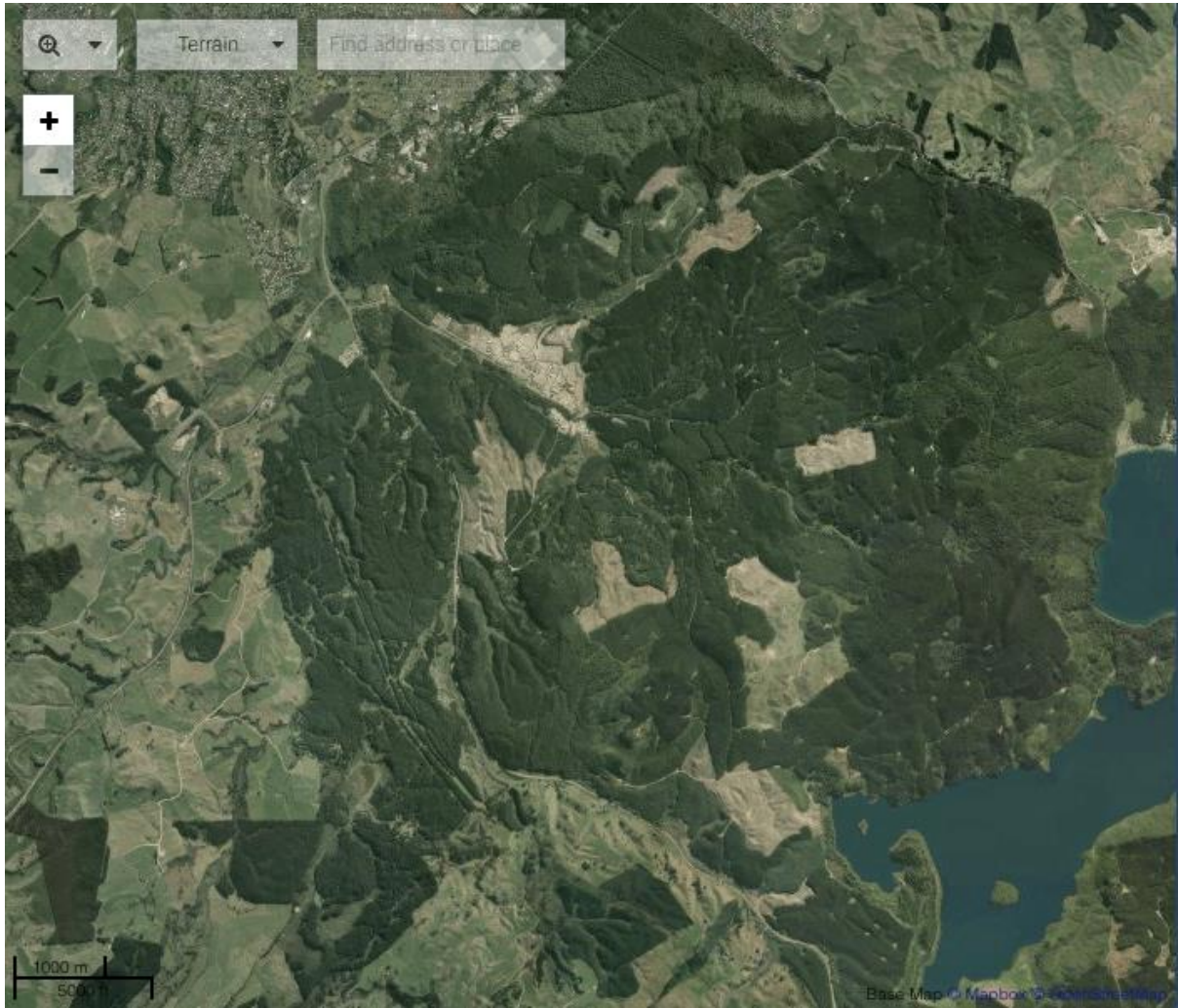


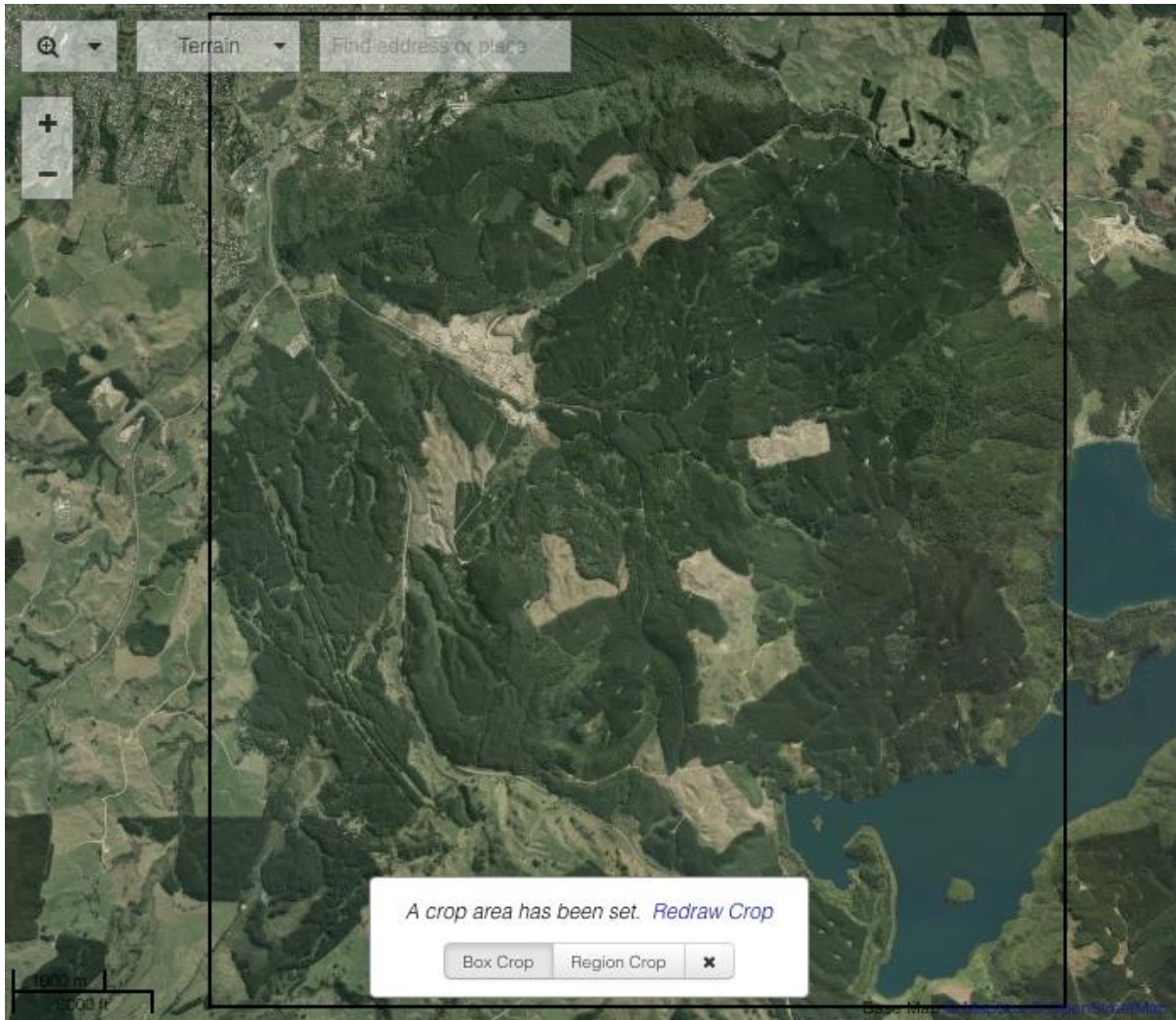
mActionSetEndPoint.svg



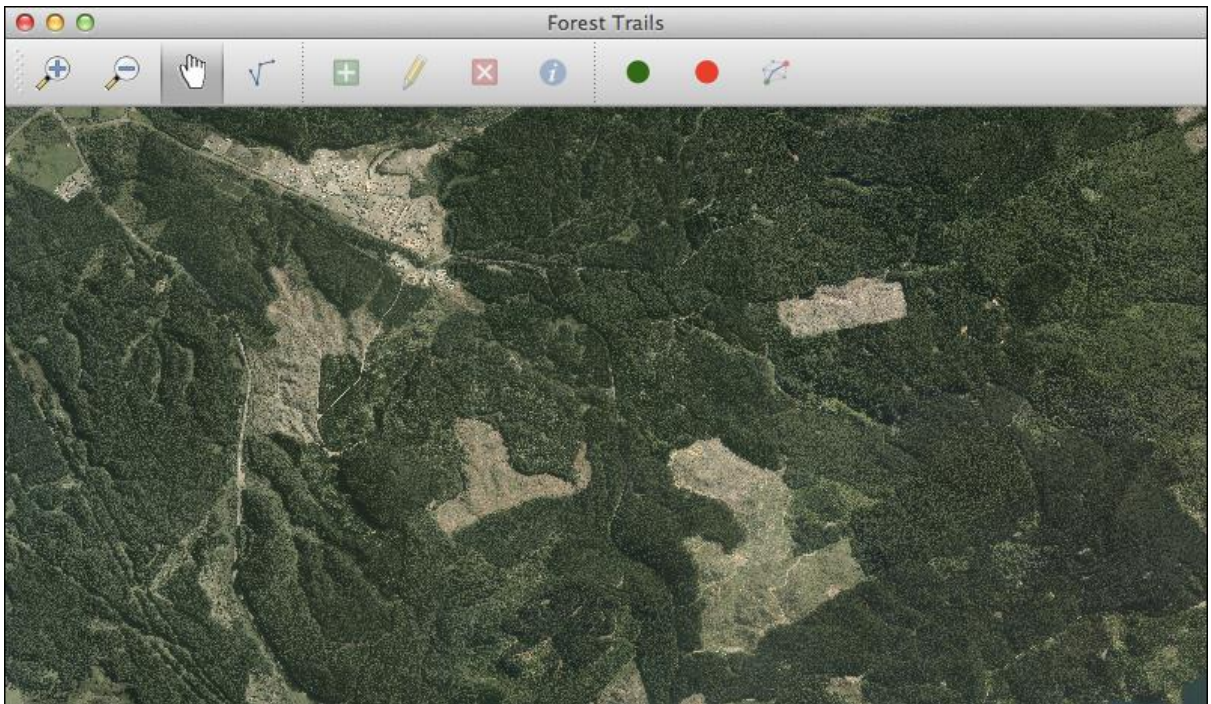
mActionFindShortestPath.svg



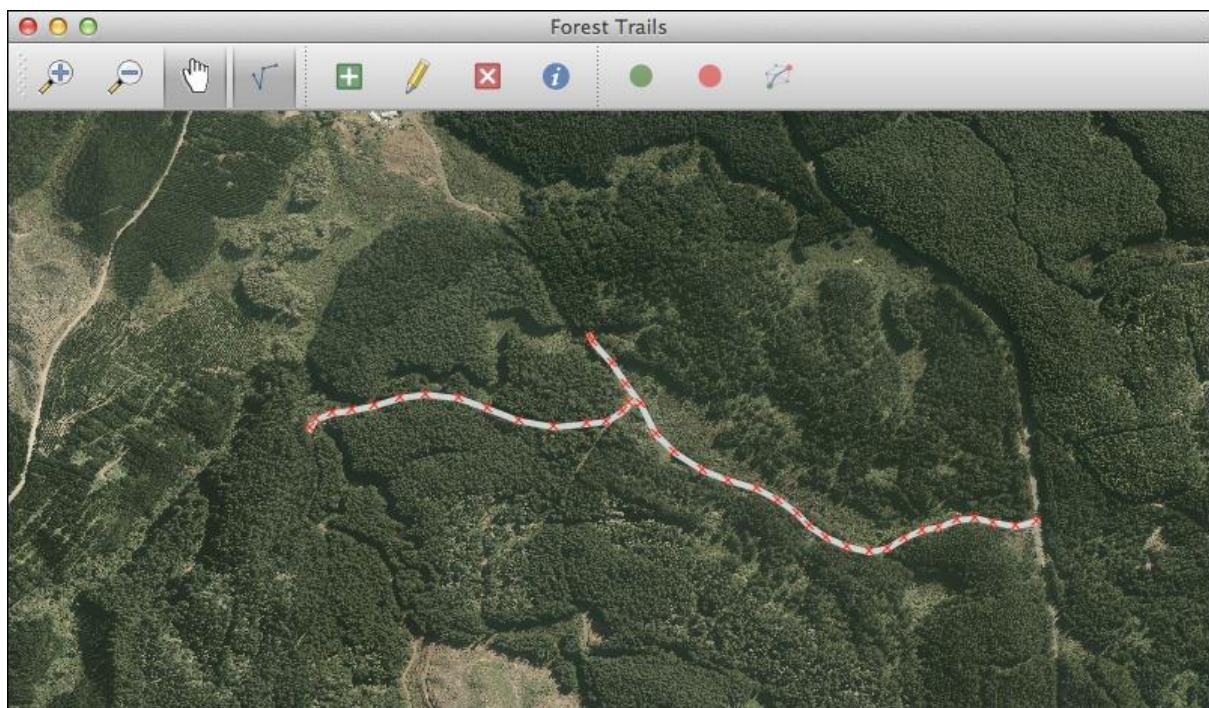
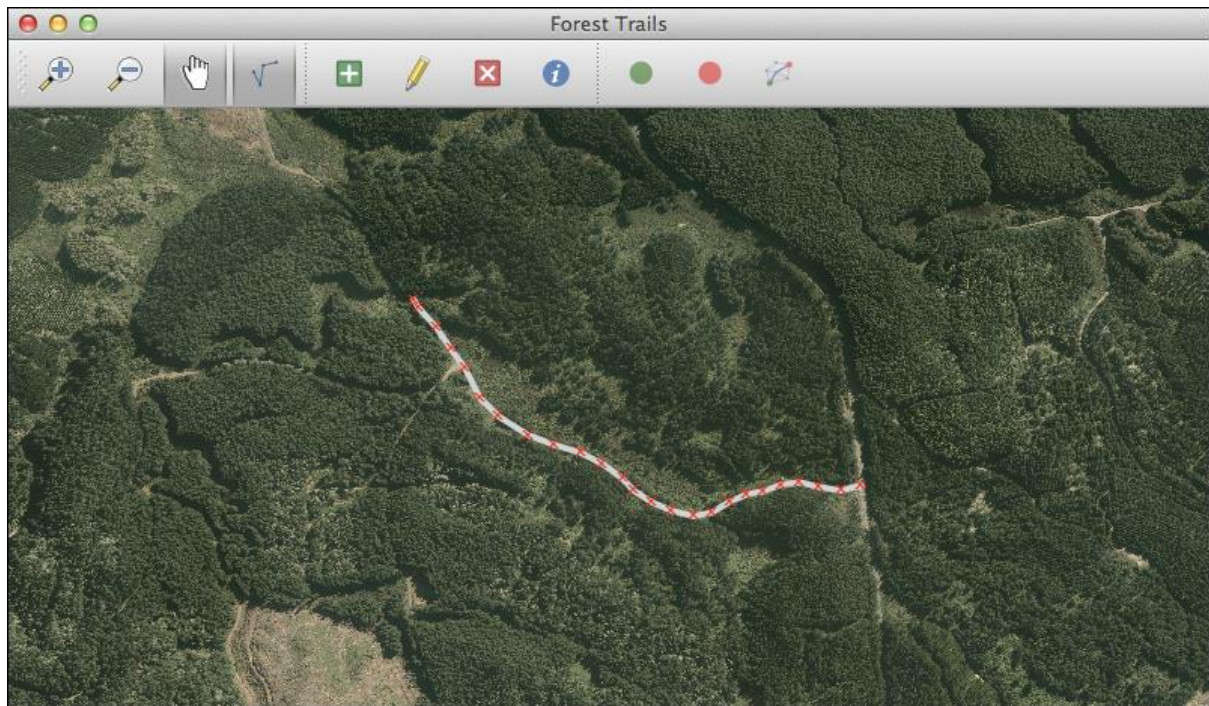


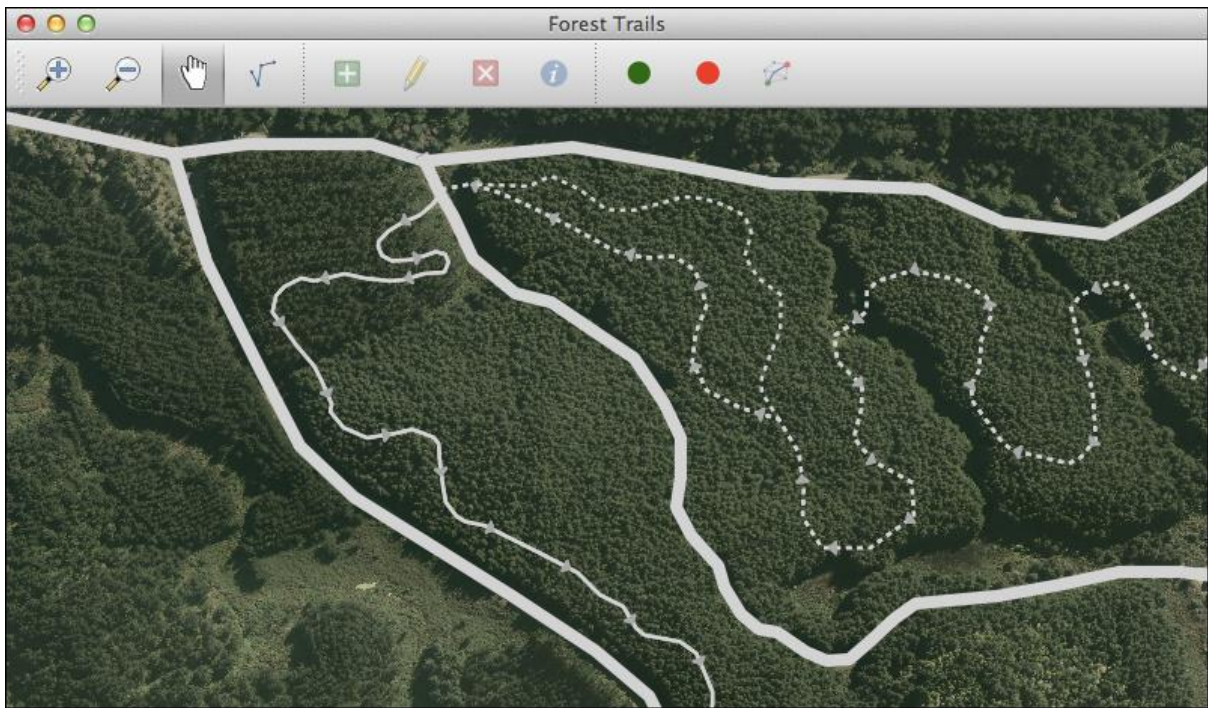
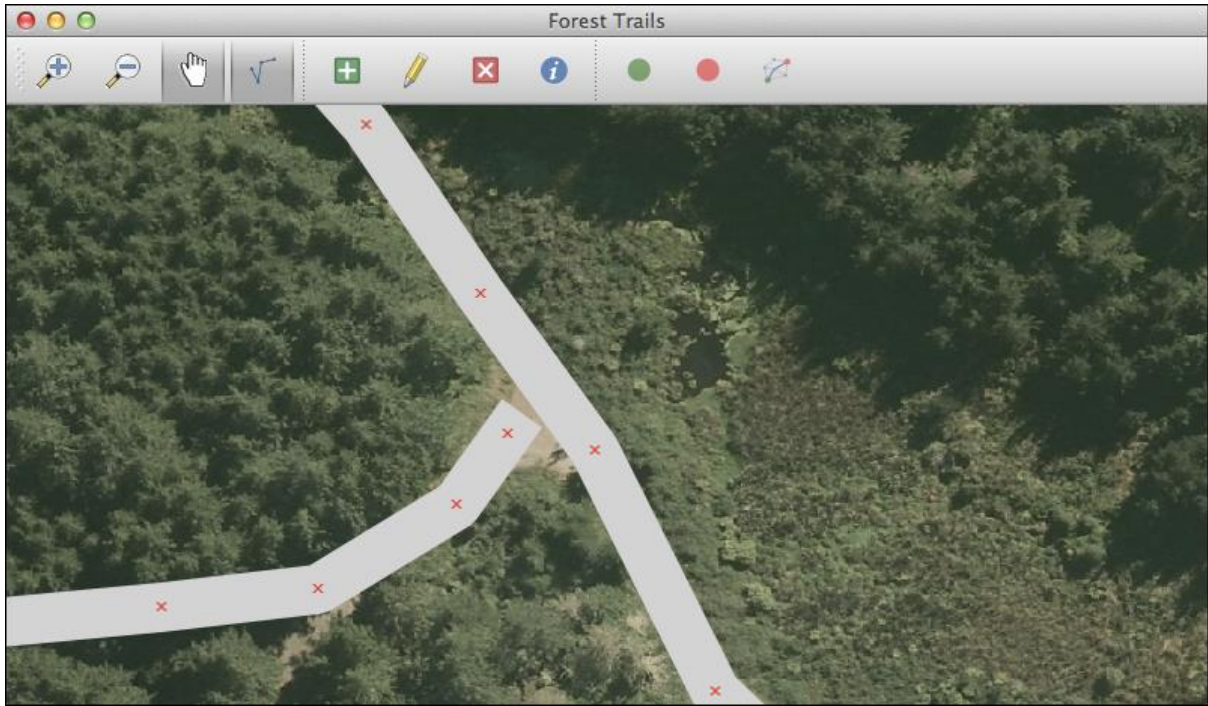






Chapter 9





Track Info

Type

Name

Direction

Status

